

FAIRVIEW ELEMENTARY

CONTACTS

PROJECT DESIGNER:
MARY BETH KINGSTON AIA
ASS'T TO FACILITIES DIRECTOR
BUNCOMBE CO. SCHOOLS
PHONE: 828-255-5916
FAX: 828-255-5923

PURCHASING ADMINISTRATION:
RON VENTURELLA
PURCHASING OFFICER
BUNCOMBE CO. SCHOOLS
PHONE: 828-255-5891
FAX: 828-251-1730

PROJECT DESCRIPTION:

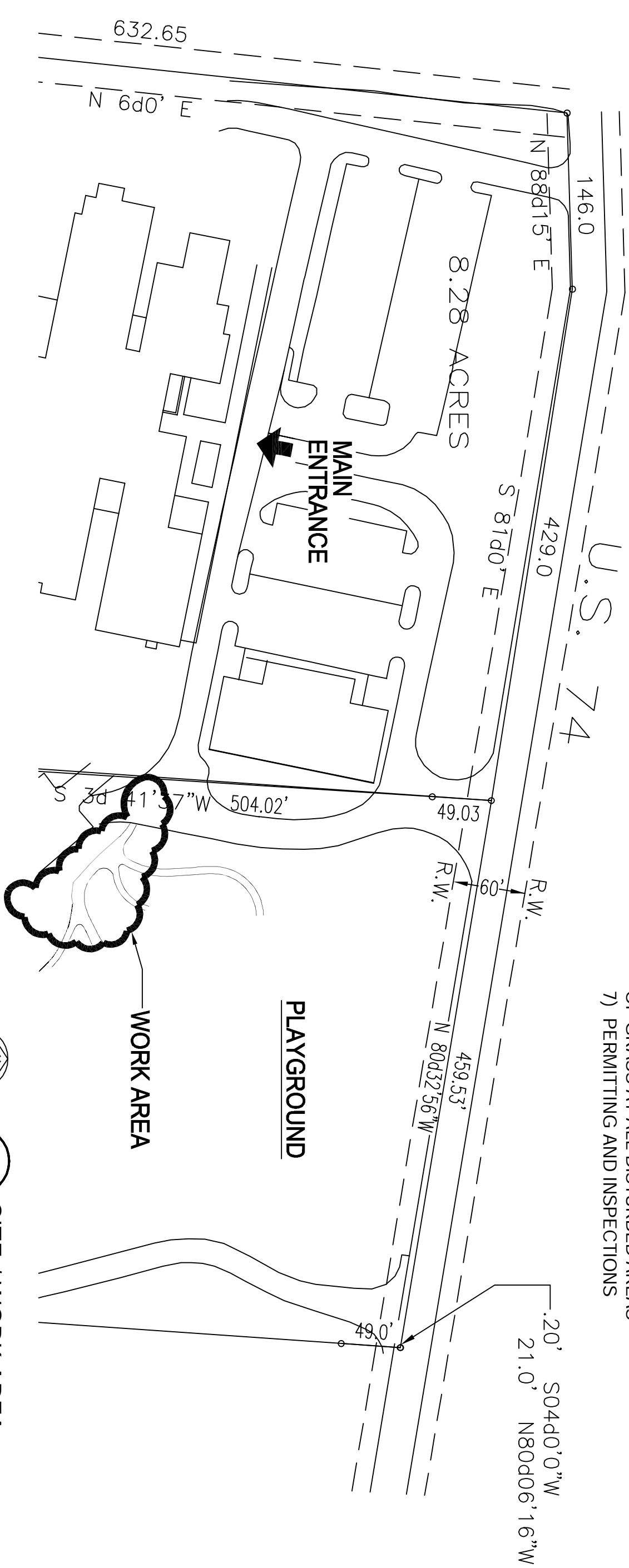
CONSTRUCTION OF SIDEWALK TO PROVIDE ACCESS TO PLAYGROUND.
SCOPE INCLUDES:

- 1) NEW (2) 4'-0" CHAINLINK GATES TO REPLACE EXISTING IN EXISTING CHAINLINK FENCE.
- 2) CONTINUOUS ACCESSIBLE ACCESS STARTING FROM THE CONNECTION TO THE STREET.
- 3) CONCRETE RETAINING WALL
- 4) CONCRETE WALKWAY
- 5) BRICK WALKWAY
- 6) GRADING, EROSION CONTROL, SEEDING AND AN ESTABLISHED STAND OF GRASS AT ALL DISTURBED AREAS
- 7) PERMITTING AND INSPECTIONS

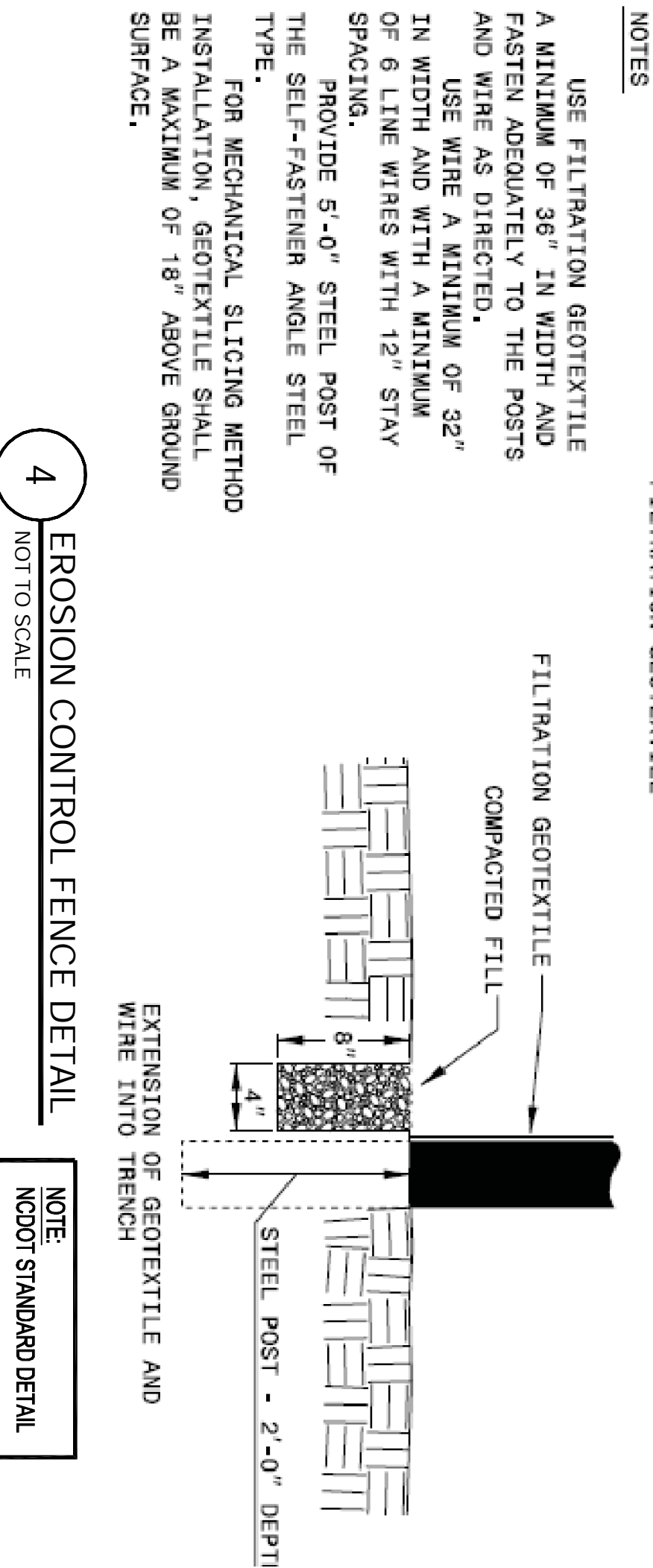
BUNCOMBE COUNTY SCHOOLS
ELEVATING YOUNG MINDS

FAIRVIEW ELEMENTARY
1355 CHARLOTTE HWAY
FAIRVIEW, NC 28803

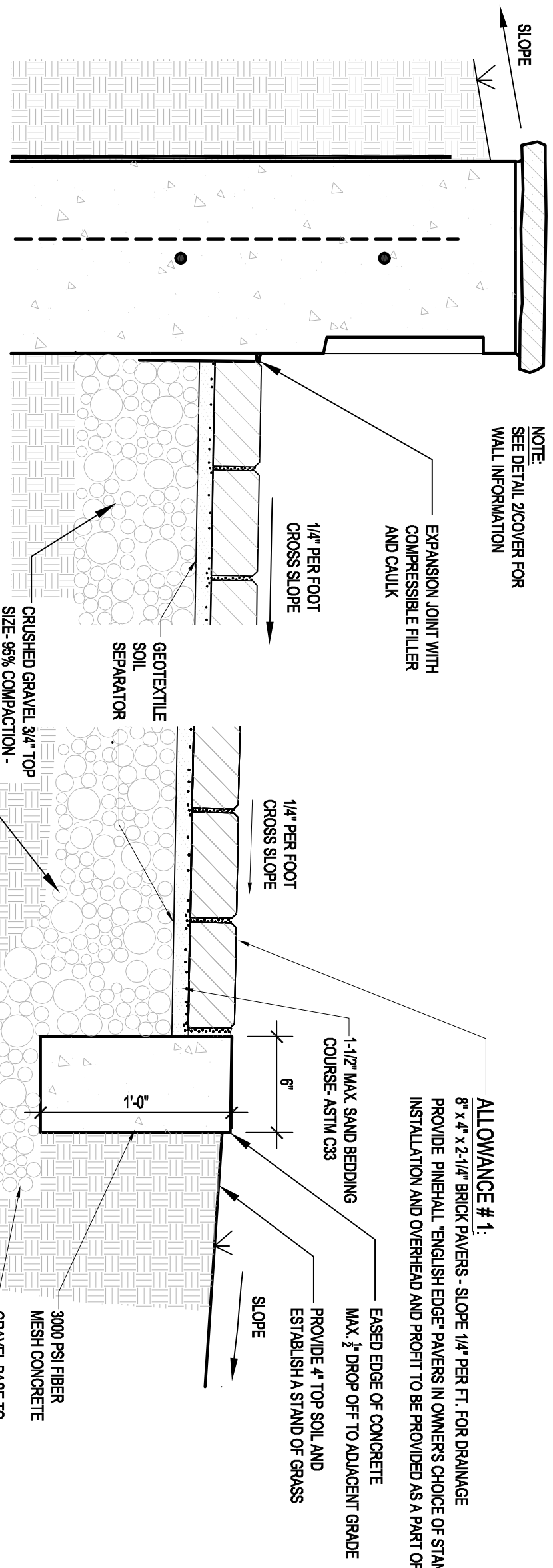
16-ADA ENTRY TO
PLAYGROUND



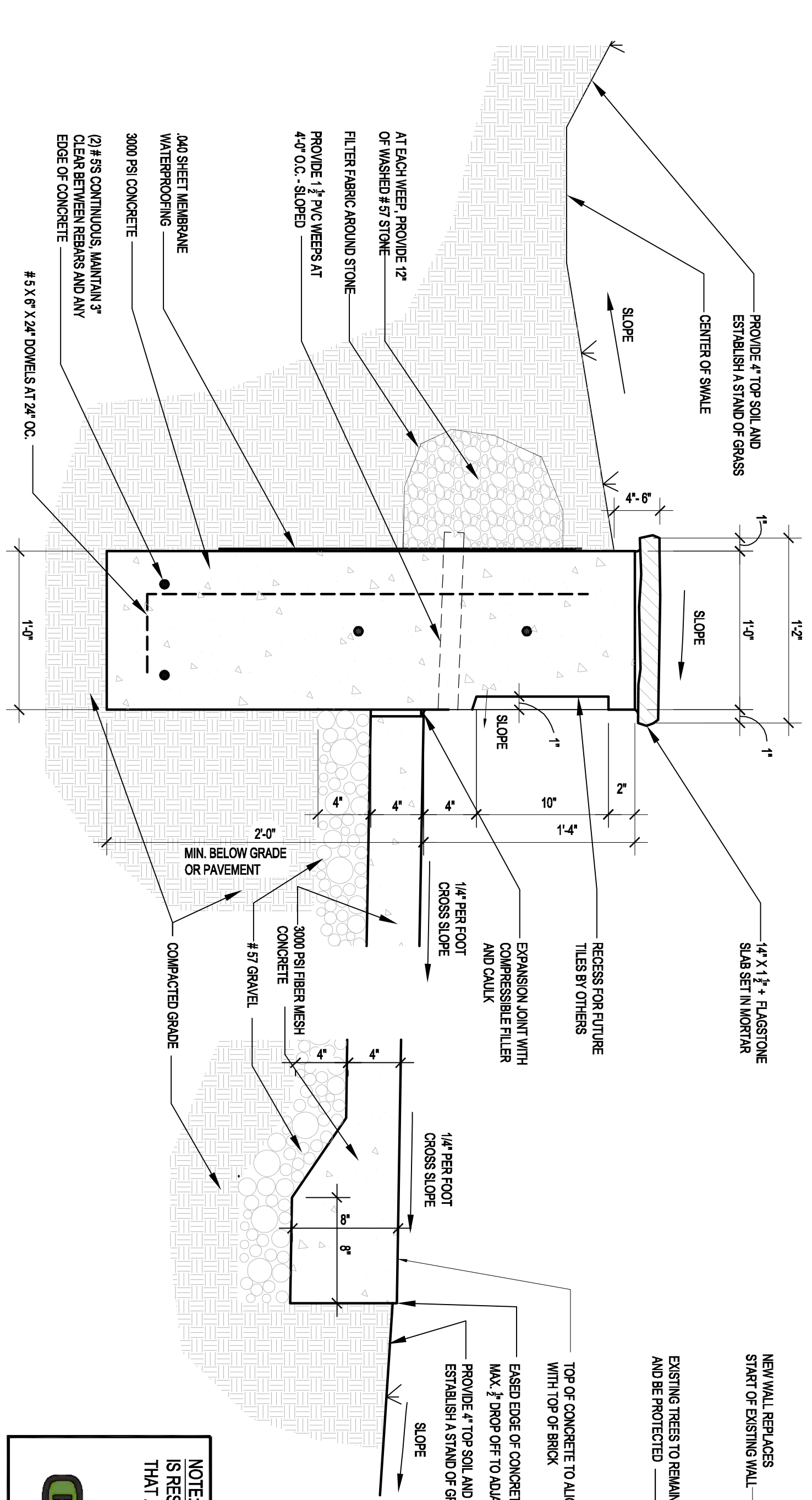
5 SITE / WORK AREA
NOT TO SCALE



4 EROSION CONTROL FENCE DETAIL
NOT TO SCALE



3 WALKWAY AT BRICK
1 1/2" = 1'-0"

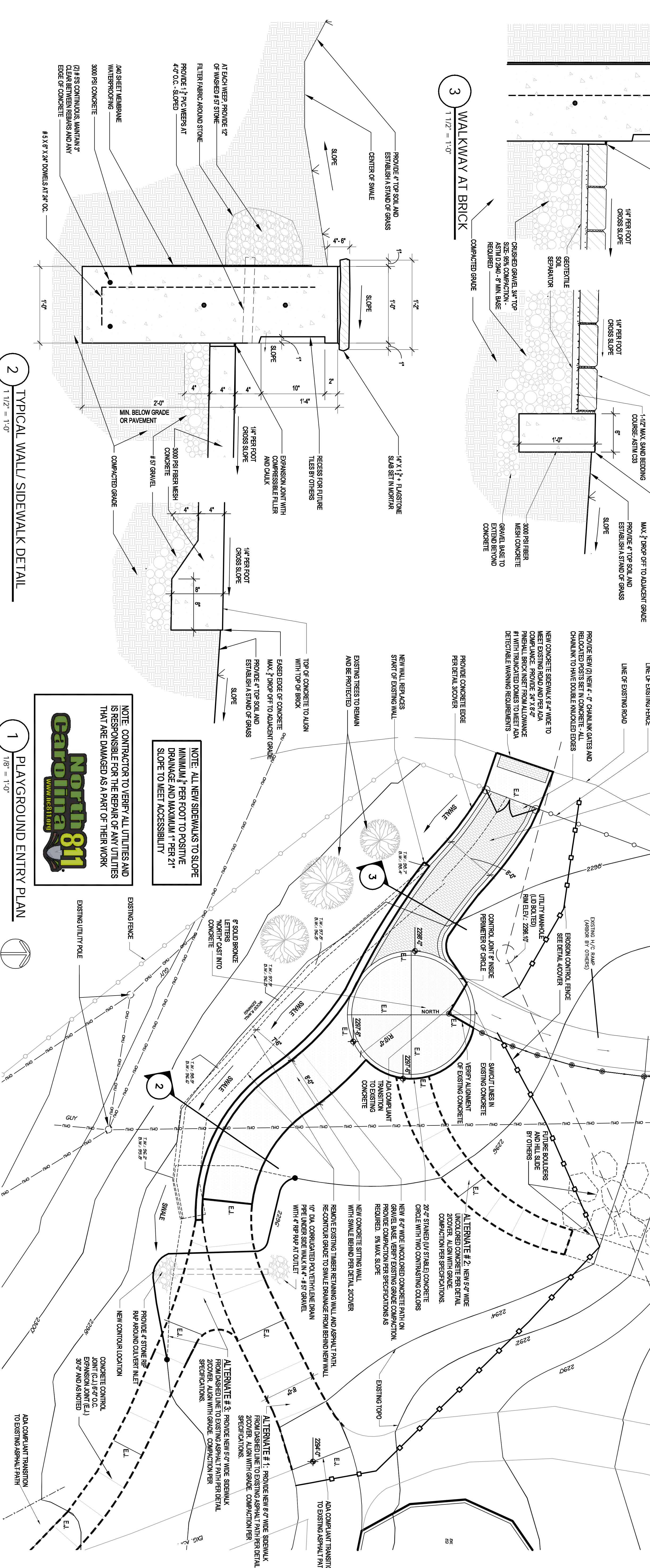


2 TYPICAL WALL / SIDEWALK DETAIL
1 1/2" = 1'-0"



NOTE: ALL NEW SIDEWALKS TO SLOPE MINIMUM 1" PER FOOT TO POSITIVE DRAINAGE AND MAXIMUM 1" PER 21" SLOPE TO MEET ACCESSIBILITY

1 PLAYGROUND ENTRY PLAN
1/8" = 1'-0"



Buncombe County Schools Facilities and Planning
Timothy Fierle AIA, Director
175 Bingham Road □ Asheville, N.C. 28806-3800
Phone: (828) 255-5916 Fax: (828) 255-5923

DESIGNED BY: MBK
DATE: MARCH 16, 2016
COVER
SHEET OF 1

