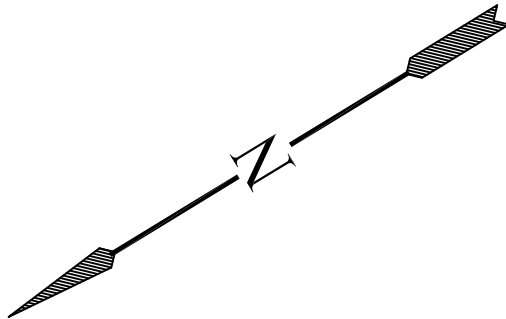


ENKA MIDDLE SCHOOL

Retrofit Roof Phase III



PLAN NORTH

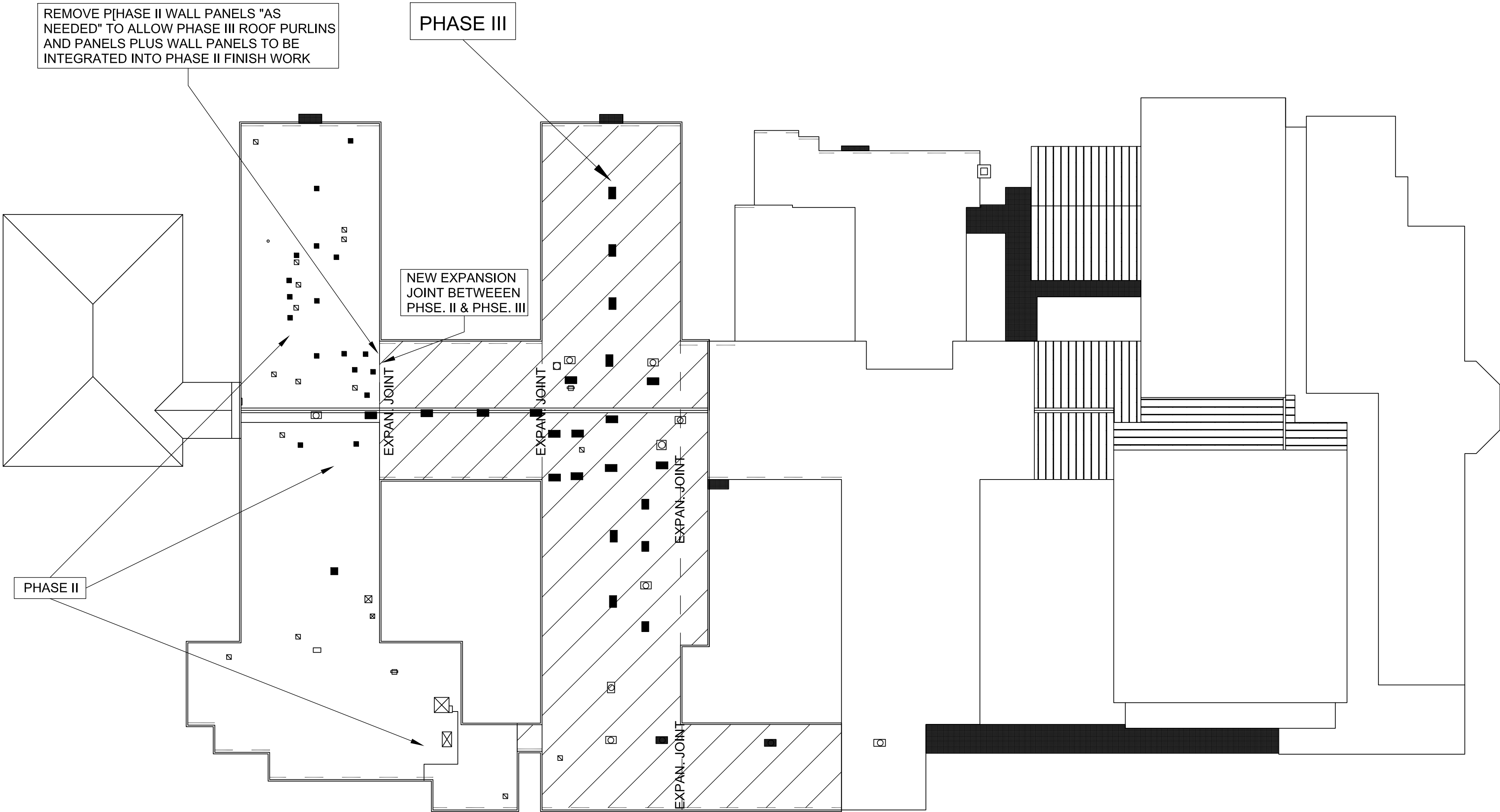


ACTUAL NORTH

Contractor: To Be Determined

Owner: ENKA School District
390 Asbury Road
Candler, NC 28715

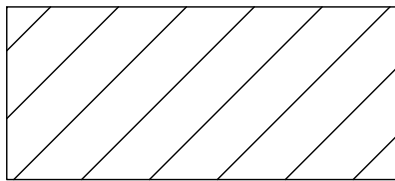
Engineer: Metal Roof Consultants, Inc.
105 Versailles Drive
Cary, NC 27511



OVERALL BUILDING PLAN 1/32" = 1'-0" ±

LEGEND

2016 RETROFIT
ROOF-PHASE III

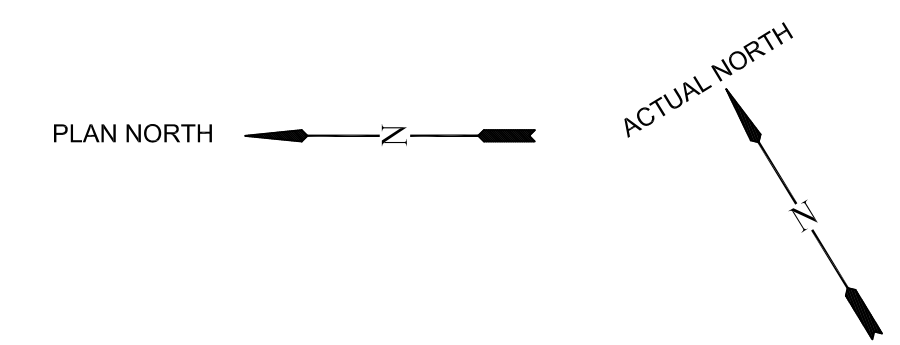


DRAWING INDEX

- CS COVER SHEET W/ OVERALL BUILDING PLAN
- S2.1 EXISTING ROOF PLAN
- S2.2 PROPOSED NEW ROOF PLAN
- S4.1 LOW EAVE DETAILS
- S4.2 RIDGE, HI-EAVE, RAKE DETAILS
- S5.1 CURB DETAILS
- S5.2 EXPANSION-JOINT, PANEL LAP DETAILS

105 Versailles Drive
Cary, NC 27511
919-465-1762

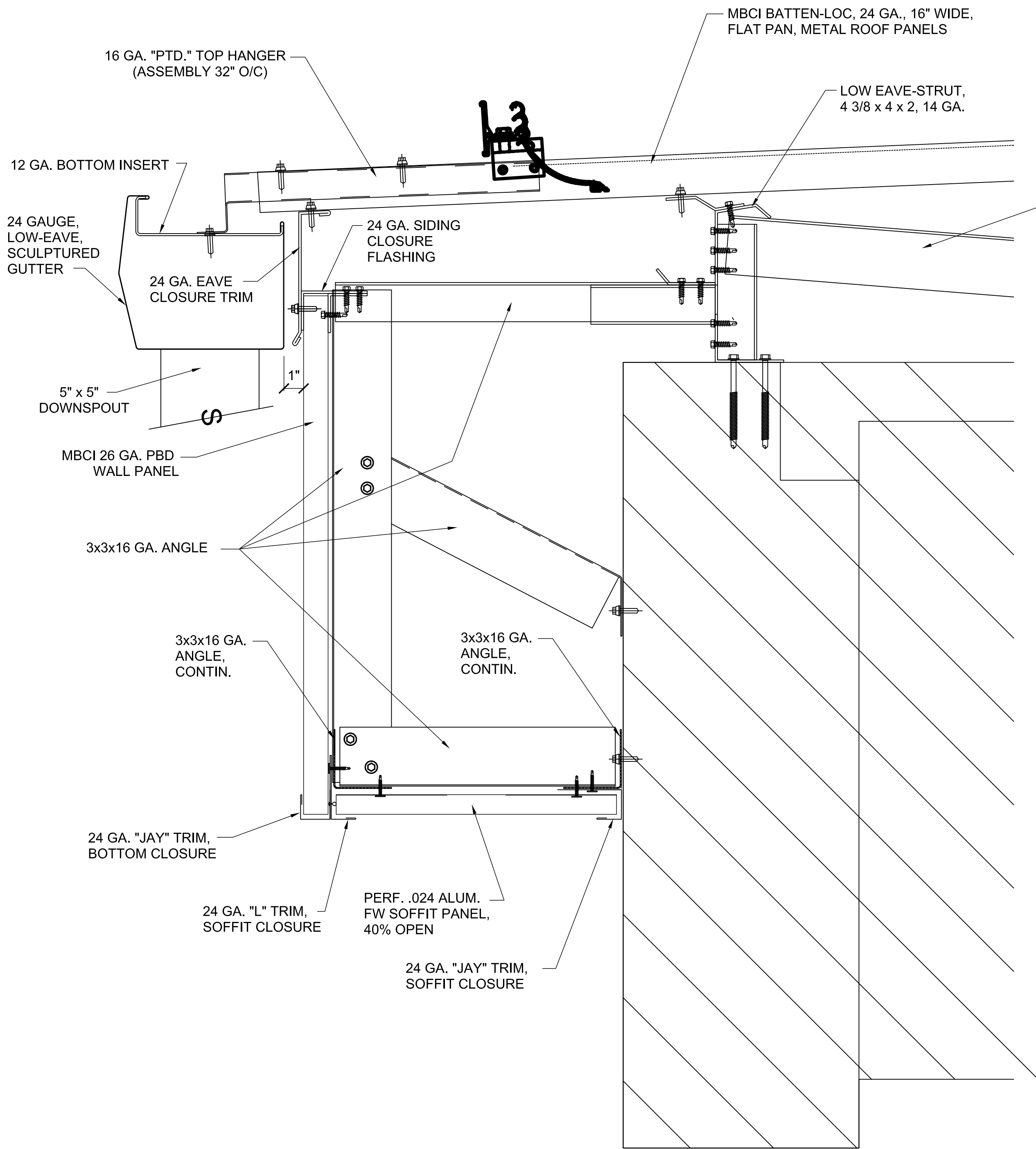
ISSUE / REVISIONS	
ISSUED FOR BID	04-01-16
ENKA Middle School Retrofit Roof - Phase III Buncombe County Schools 390 Asbury Road Candler NC 28715	
METAL ROOF CONSULTANTS, INC. 105 VERSAILLER DRIVE, CARY, NC 27511 919-465-1762 (Ph), www.metalroofconsultants.info	
DRAWN BY:	WLW
DATE:	04/01/2016
RE-ROOF PHASE III COVER SHEET	
CS	



02
S2.2 LONGITUDINAL CROSS-SECTION 1/16" = 1'-0"

32.2

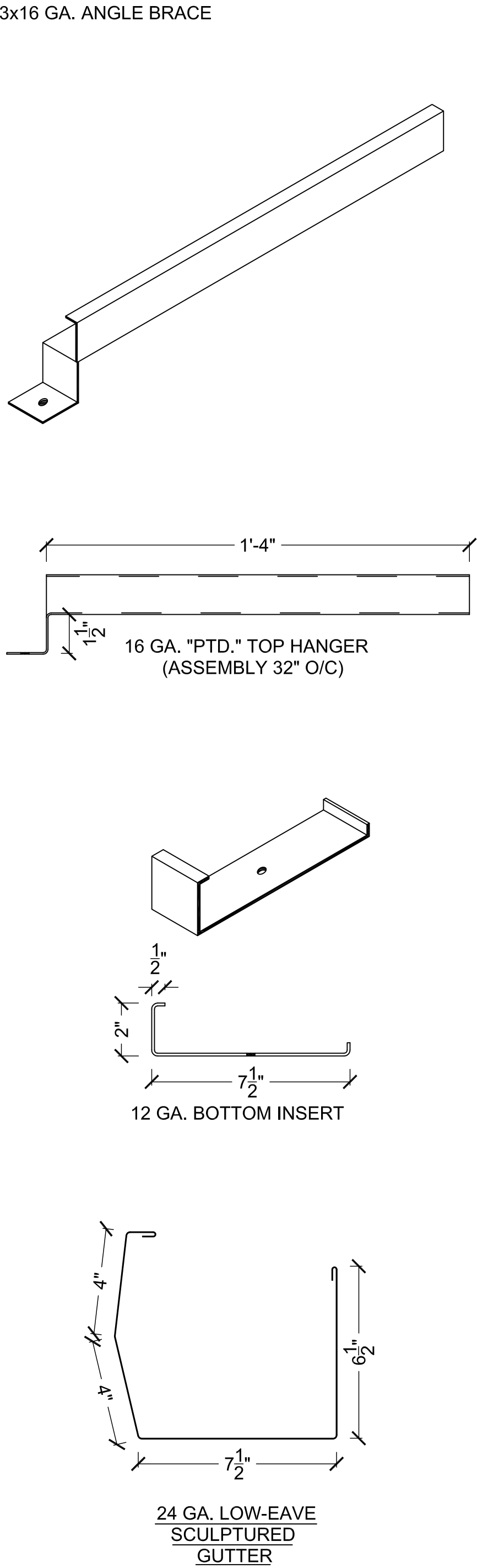
FOR ADDITIONAL INFORMATION
ON GUTTER & DOWNSPOUTS,
SEE NOTES 1, 2, 3 BELOW



01
S4.1

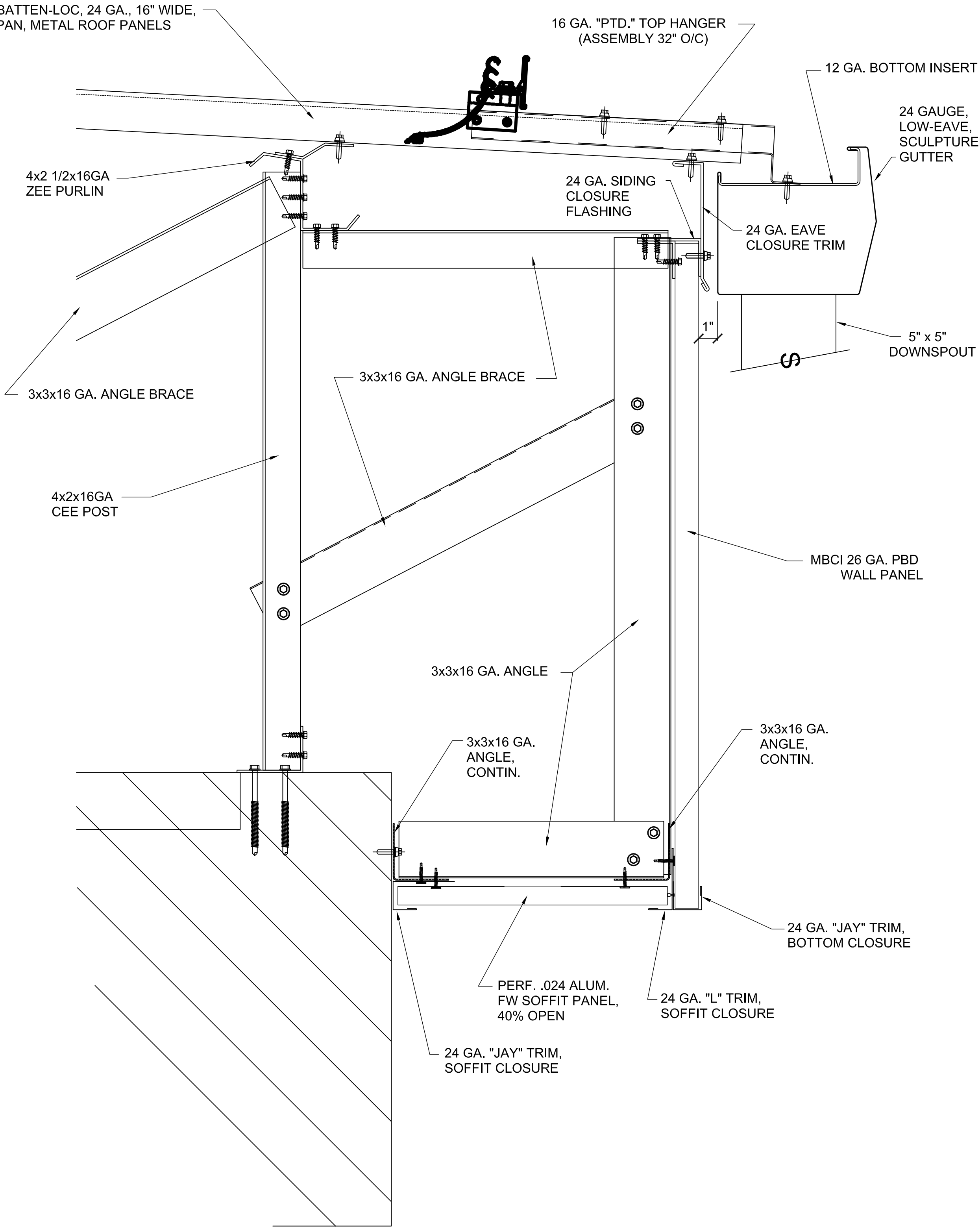
LOW EAVE DETAIL @ 1/2 ON 12 SLOPE

3" = 1'-0"



- GUTTER AND DOWNSPOUT NOTE:
1. GUTTERS TO BE A MIN. OF 49 SQ. INCHES IN CROSS-SECTION
 2. DOWNSPOUTS TO BE A MIN. OF 25 SQ. INCHES IN CROSS-SECTION
 3. DOWNSPOUTS TO BE SPACED AT 30'-0" ON CENTER (MAXIMUM)

MBCI BATTEN-LOC, 24 GA., 16" WIDE,
FLAT PAN, METAL ROOF PANELS




01
S4.1


LOW EAVE DETAIL @ 5/8 ON 12 SLOPE

3" = 1'-0"

FOR ADDITIONAL INFORMATION
ON GUTTER & DOWNSPOUTS,
SEE NOTES 1, 2, 3 BELOW



105 Versailler Drive
Cary, NC 27511
919-465-1762



4/1/16

ISSUE / REVISIONS

NO.	DESCRIPTION	DATE
1	ISSUED FOR BID	04-01-16

ENKA Middle School Retrofit Roof - Phase III
Buncombe County Schools

390 Asbury Road
Candler NC 28715

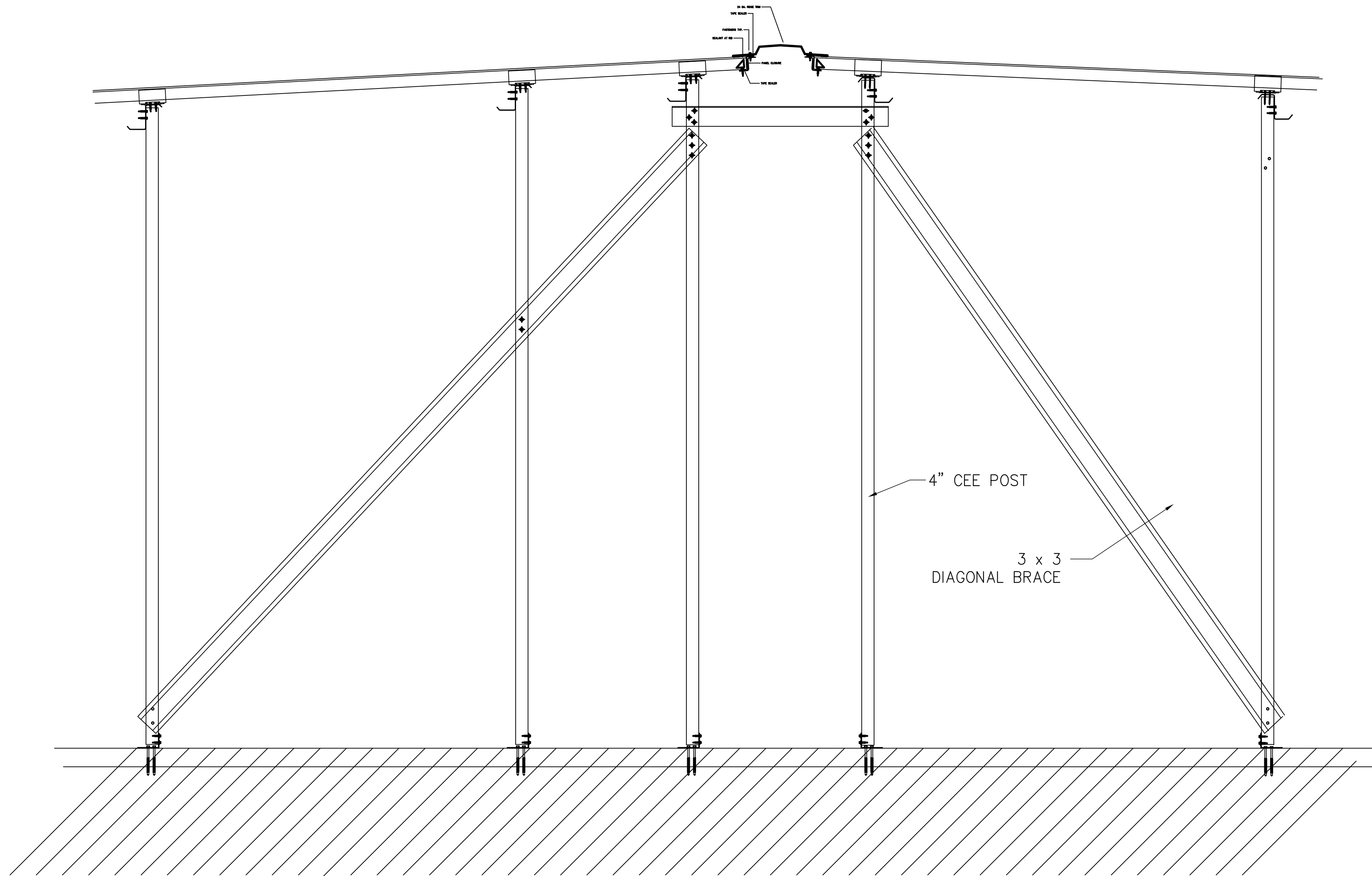
METAL ROOF CONSULTANTS, INC.
105 VERSAILLER DRIVE, CARY, NC 27511
919-465-1762 (Ph), www.metalroofconsultants.info

DRAWN BY: WLW

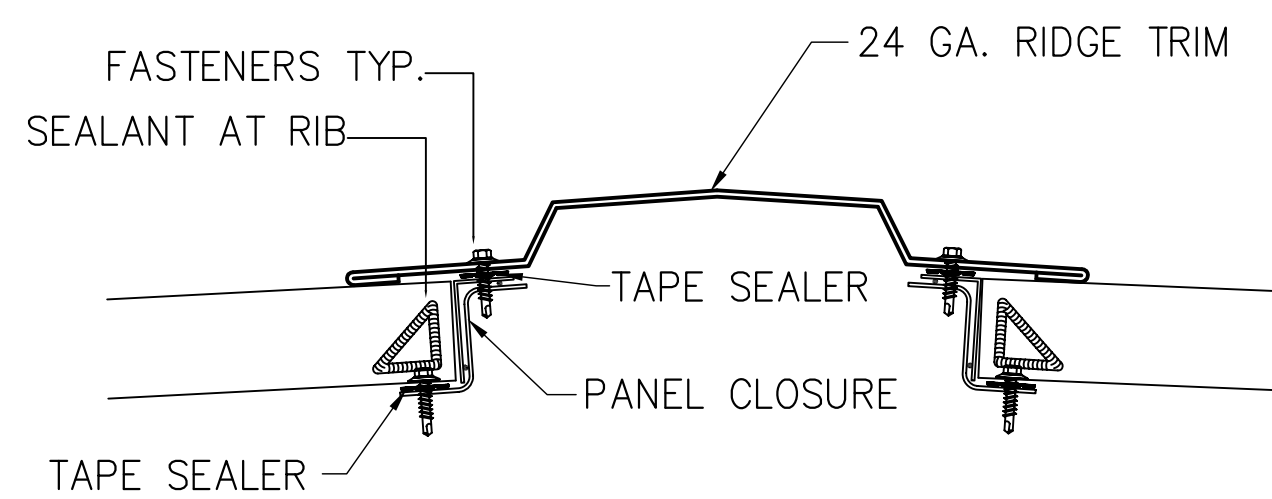
DATE: 04/01/2016

RE-ROOF PHASE III
DETAILS

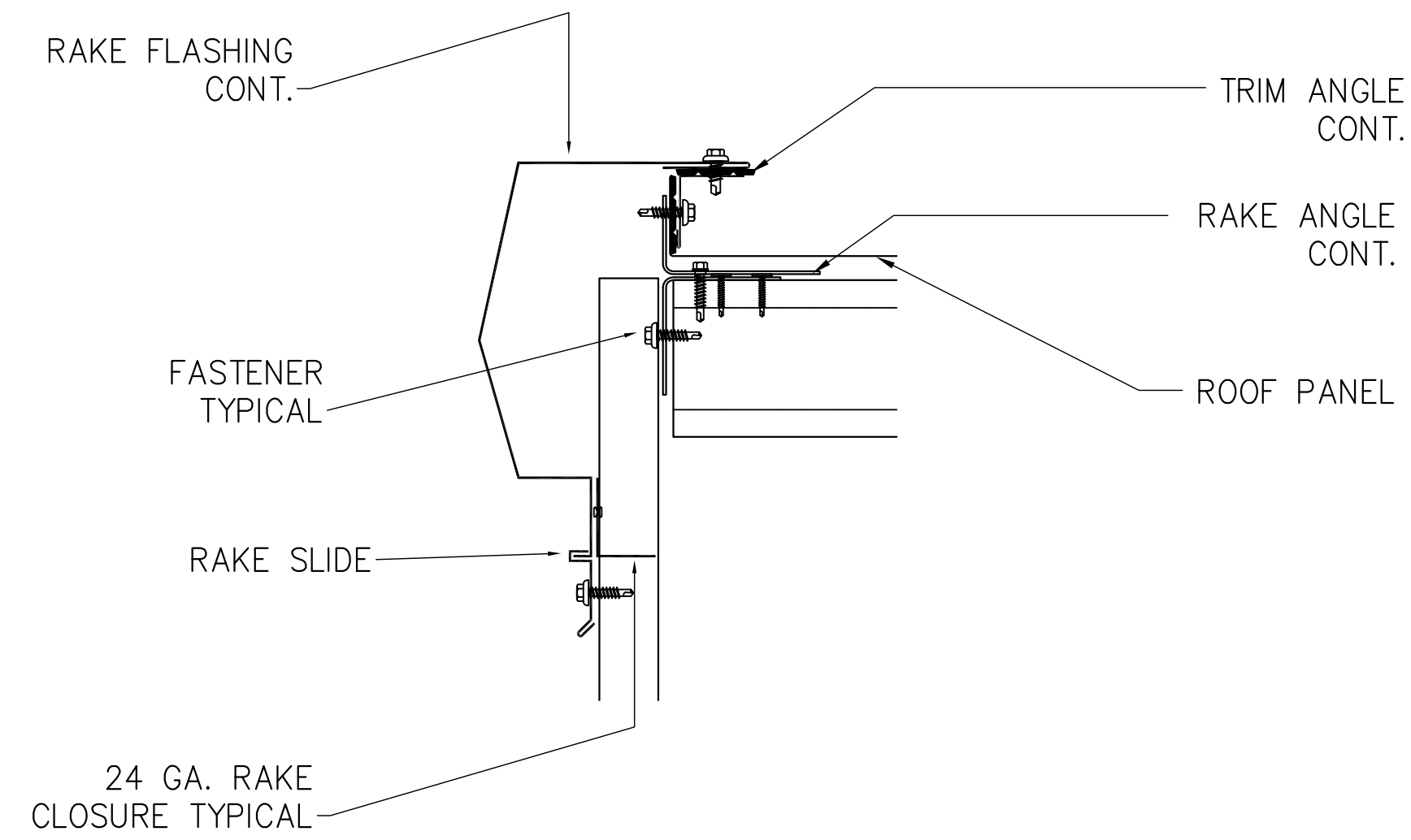
S4.1



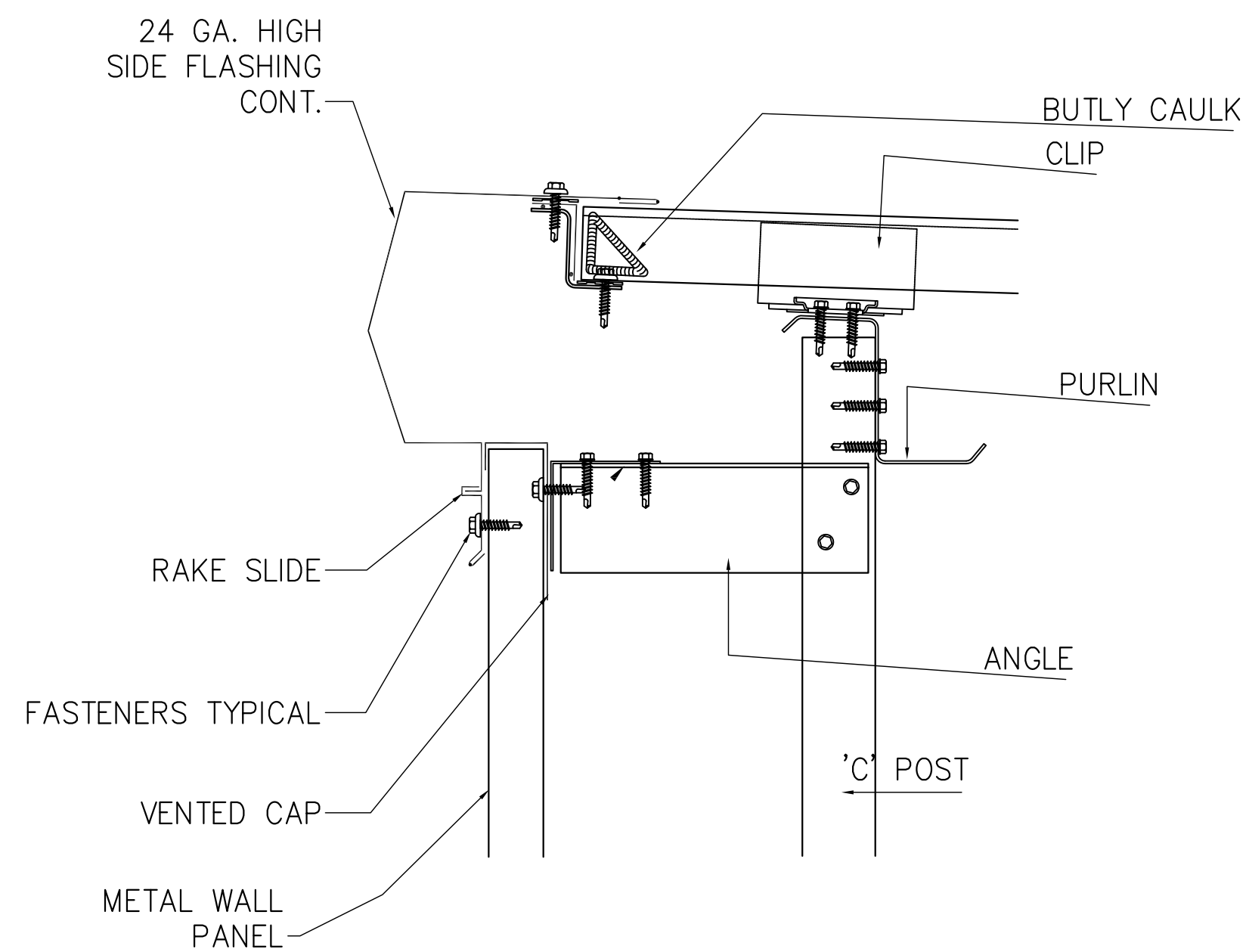
01
S4.2 SECTION AT RIDGE 1" = 1'-0"



04
S4.2 TYPICAL PEAK DETAIL 3" = 1'-0"



02
S4.2 TYPICAL RAKE DETAIL 3" = 1'-0"



03
S4.2 TYPICAL PEAK DETAIL 3" = 1'-0"



105 Versailler Drive
Cary, NC 27511
919-465-1762



ISSUE / REVISIONS

ISSUED FOR BID 04-01-16

ENKA Middle School Retrofit Roof - Phase III
Buncombe County Schools
390 Asbury Road
Candler NC 28715

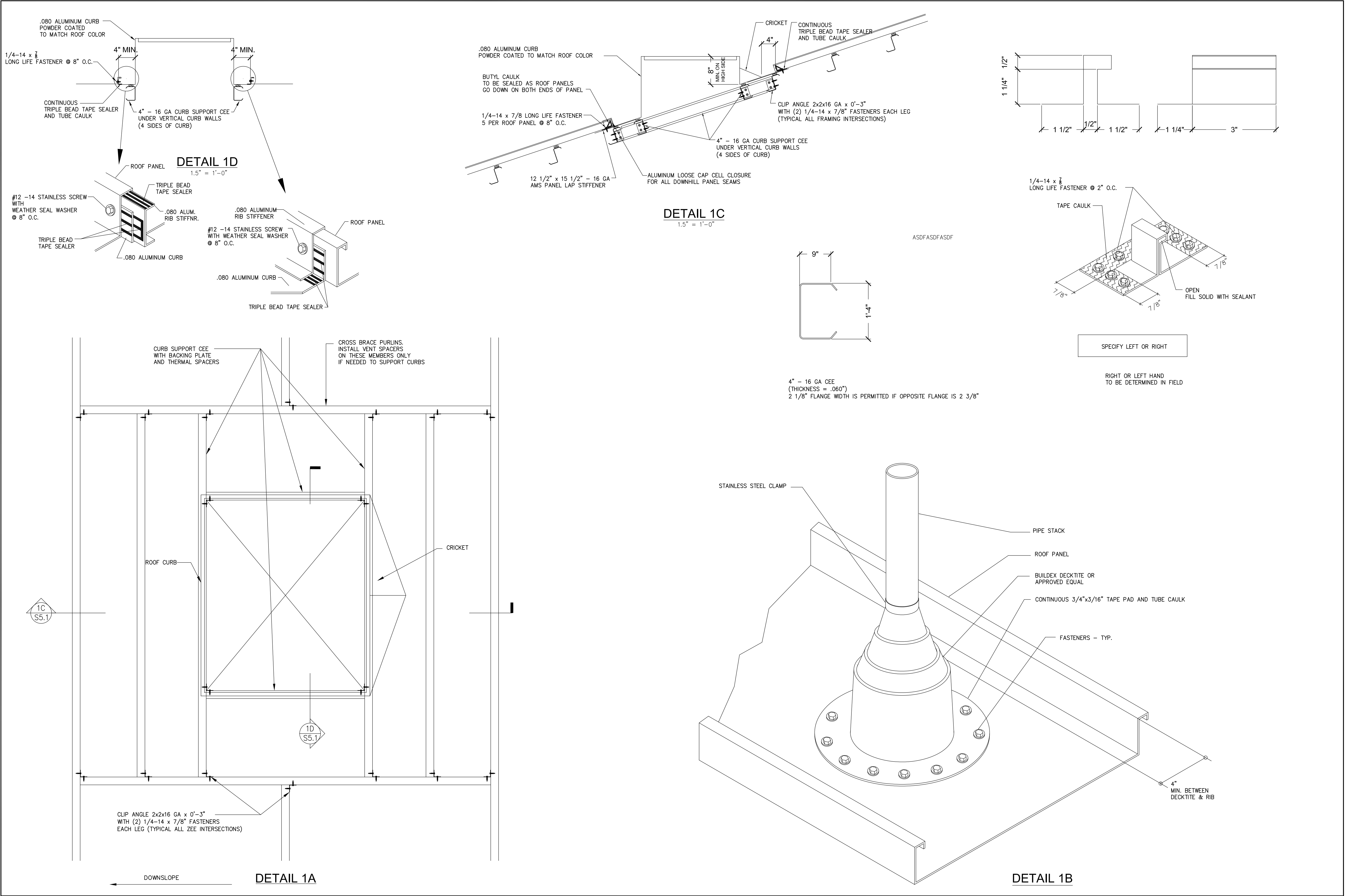
METAL ROOF CONSULTANTS, INC.
105 VERSAILLER DRIVE, CARY, NC 27511
919-465-1762 (Ph), www.metalroofconsultants.info

DRAWN BY: WLW

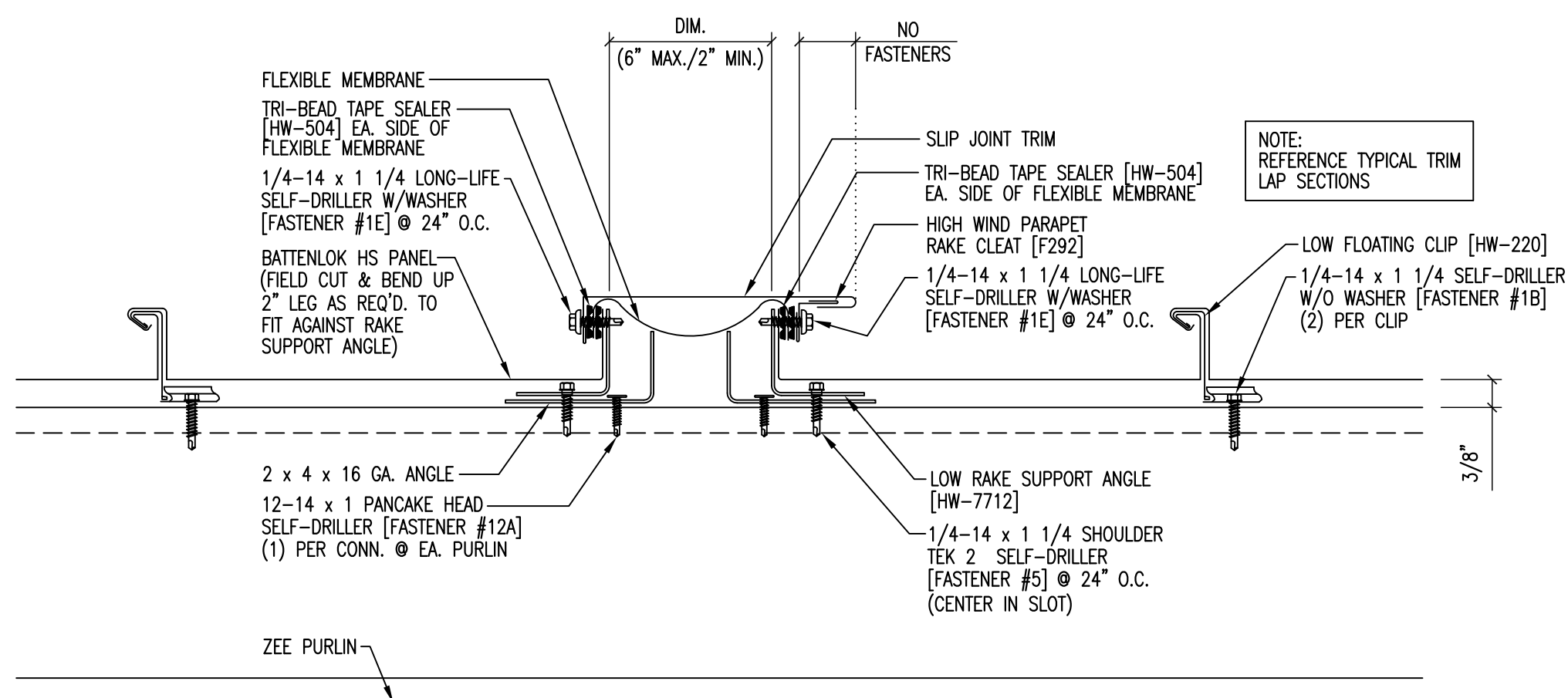
DATE: 04/01/2016

RE-ROOF PHASE III
DETAILS

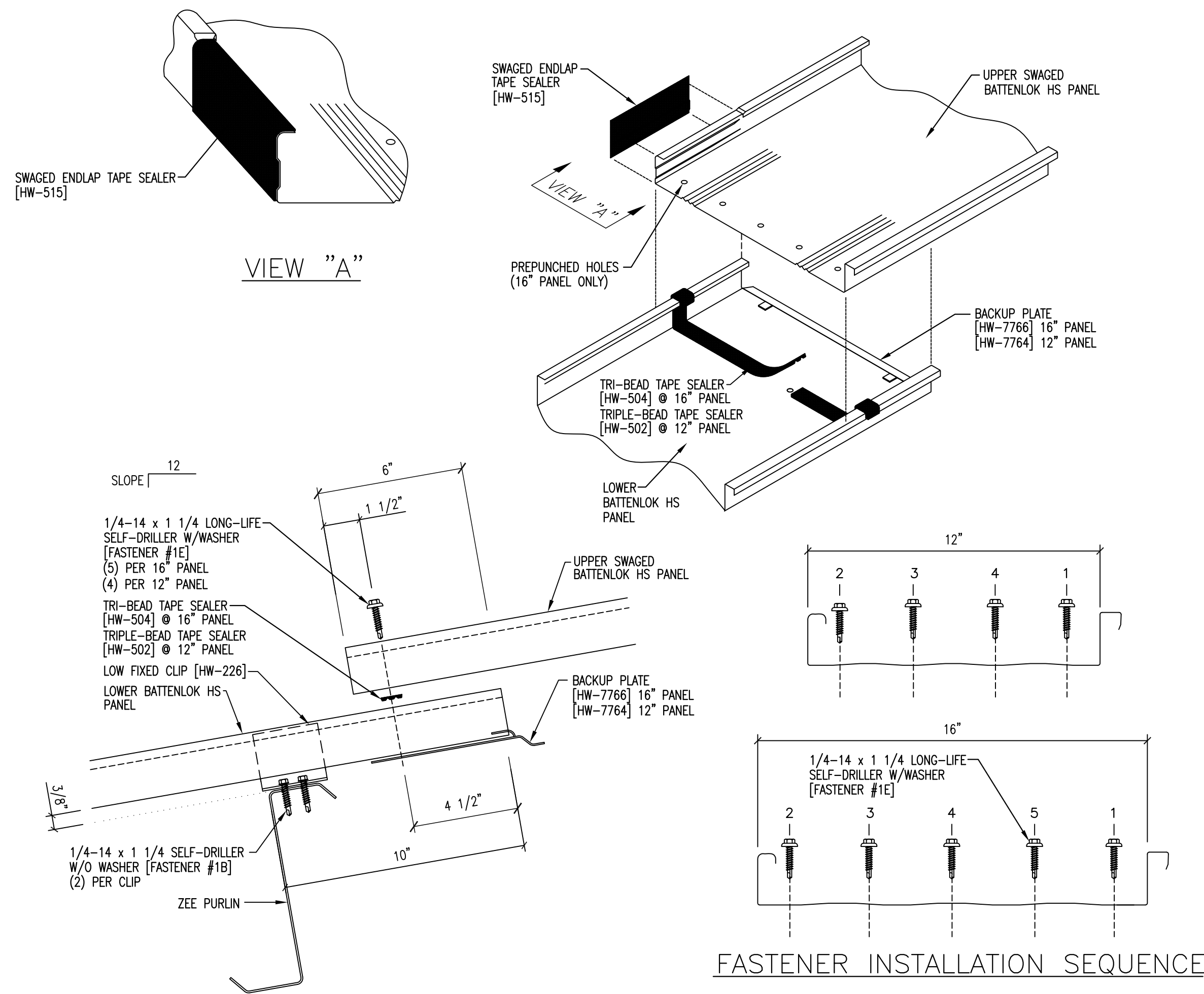
S4.2



<div><div><div><div><div><div></div><div>Metal Roof Consultants, Inc.</div></div></div><div><div><div></div><div>105 Versailles Drive Cary, NC 27511 919-465-1762</div></div><div><div><div></div><div>PROFESSIONAL SEAL 15572 CHARLES R. HINDS 4/1/16</div></div></div></div></div></div></div>	
ISSUE / REVISIONS	
ISSUED FOR BID	04-01-16
ENKA Middle School Retrofit Roof - Phase III Buncombe County Schools	
390 Asbury Road Candler NC 28715	
METAL ROOF CONSULTANTS, INC. 105 VERSAILLER DRIVE, CARY, NC 27511 919-465-1762 (Ph), www.metalroofconsultants.info	
DRAWN BY:	WLW
DATE:	04-01-2016
RE-ROOF PHASE III CURB DETAILS	
S5.1	



PANEL EXPANSION JOINT
(PARALLEL TO PANEL RIB)



PANEL LAP W/ BACK-UP PLATE
(PERPENDICULAR TO PANEL RIB)

105 Versailler Drive
Cary, NC 27511
919-465-1762

ISSUE / REVISIONS	
ISSUED FOR BID	04-01-16

ENKA Middle School Retrofit Roof - Phase III

Buncombe County Schools

390 Asbury Road
Candler NC 28715

METAL ROOF CONSULTANTS, INC.

105 VERSAILLER DRIVE, CARY, NC 27511

919-465-1762 (Ph), www.metalroofconsultants.info

DRAWN BY:	WLW
DATE:	04-01-2016
RE-ROOF PHASE III	
PANEL DETAILS	
S5.2	