

JOB NAME:
North Buncombe High School

BUYER:

SALES ENG.:

Mark Varadi

MODEL NO.:

23XRVA6A6EPJR350-

JOB NO.:

P.O. NO.:

PREPARED BY:

ELECTRICAL CHARACTERISTICS:

460/3/60

JOB SITE LOCATION:

SALES OFFICE:

Carrier Greensboro

REFRIGERANT NO.:

R-134a

NOTES:

COMP'R: TP
COOLER: 23XRA1-A6
COND'R: 23XRA1-A6
MACHINE ASSEMBLY
DISCHARGE END VIEW

DATE: 11/3/2017

REVISION: _____

THIS DOCUMENT IS THE PROPERTY OF CARRIER CORP. AND IS DELIVERED UPON THE EXPRESS CONDITION THAT THE CONTENTS WILL NOT BE DISCLOSED OR USED WITHOUT CARRIER CORP. WRITTEN CONSENT.

SUBMISSION OF THESE DWG'S. OR DOCUMENTS DOES NOT CONSTITUTE PART PERFORMANCE OR ACCEPTANCE OF CONTRACT.

CARRIER DWG # 23XRA1TP-C

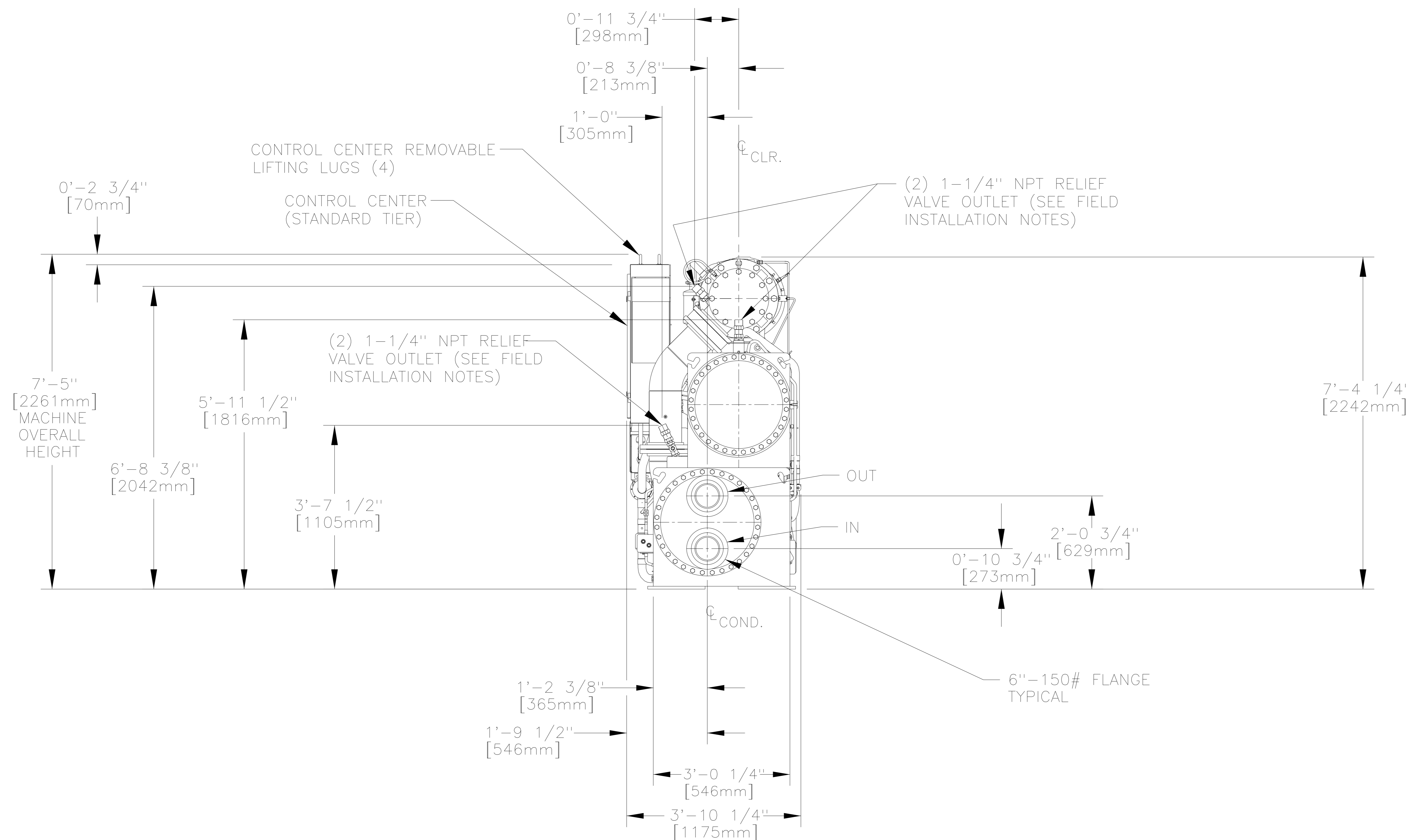
REV. - SHT 01 OF 01

DATE: 4/17/2014

SUPERSEDES DWG. DATED:

23XRTP-12

SHT 9 OF 9



DISCHARGE END VIEW

HEAT EXCHANGERS 23XRA1-A6										MACHINE OPTIONS		
COOLER					CONDENSER							
PASS	NOZZLE CODE	PRESSURE	W/B COVER WT. DISCHARGE END	W/B COVER WT. SUCTION END	PASS	NOZZLE CODE	PRESSURE	W/B COVER WT. DISCHARGE END	W/B COVER WT. SUCTION END	ISOLATION VALVE	HOT GAS BYPASS	ECONOMIZER
2	D	150 PSIG	157 LBS. [71 KG.]	265 LBS. [120 KG.]	2	R	150 PSIG	298 LBS. [135 KG.]	173 LBS. [78 KG.]	✓	✓	✓

NOTES:

1. TOLERANCES ON NOZZLE LOCATIONS AND OVERALL DIMENSIONS ARE ± 1" [25mm].
2. CARRIER DOES NOT RECOMMEND PRE-FAB WATER PIPING.
3. NOT APPLICABLE.
4. ✓ DENOTES APPLICABLE CONDITIONS