

ADDENDUM #2

March 31, 2020

TRANSMITTED VIA EMAIL: 4 pages

TO: ALL PLAN HOLDERS AND POTENTIAL BIDDERS
FROM: TIFFANY McCANTS, PURCHASING OFFICER
SUBJECT: CLYDE A. ERWIN MIDDLE SCHOOL SECURE CAMPUS PERIMETER



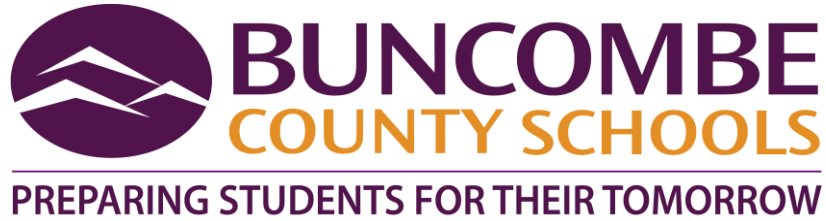
(RFP# 7-20)

The following specifications and drawings are hereby made a part of the original documents. Bidders shall acknowledge receipt of this addendum by notation in the space provided on the Proposal Form.

Addendum includes: *Pre-Bid notes with drawings.*

Addendum #2

RFP# 7-20



ADDENDUM 2 to RFP# 7-20

Clyde A Erwin Middle School secure campus perimeter.

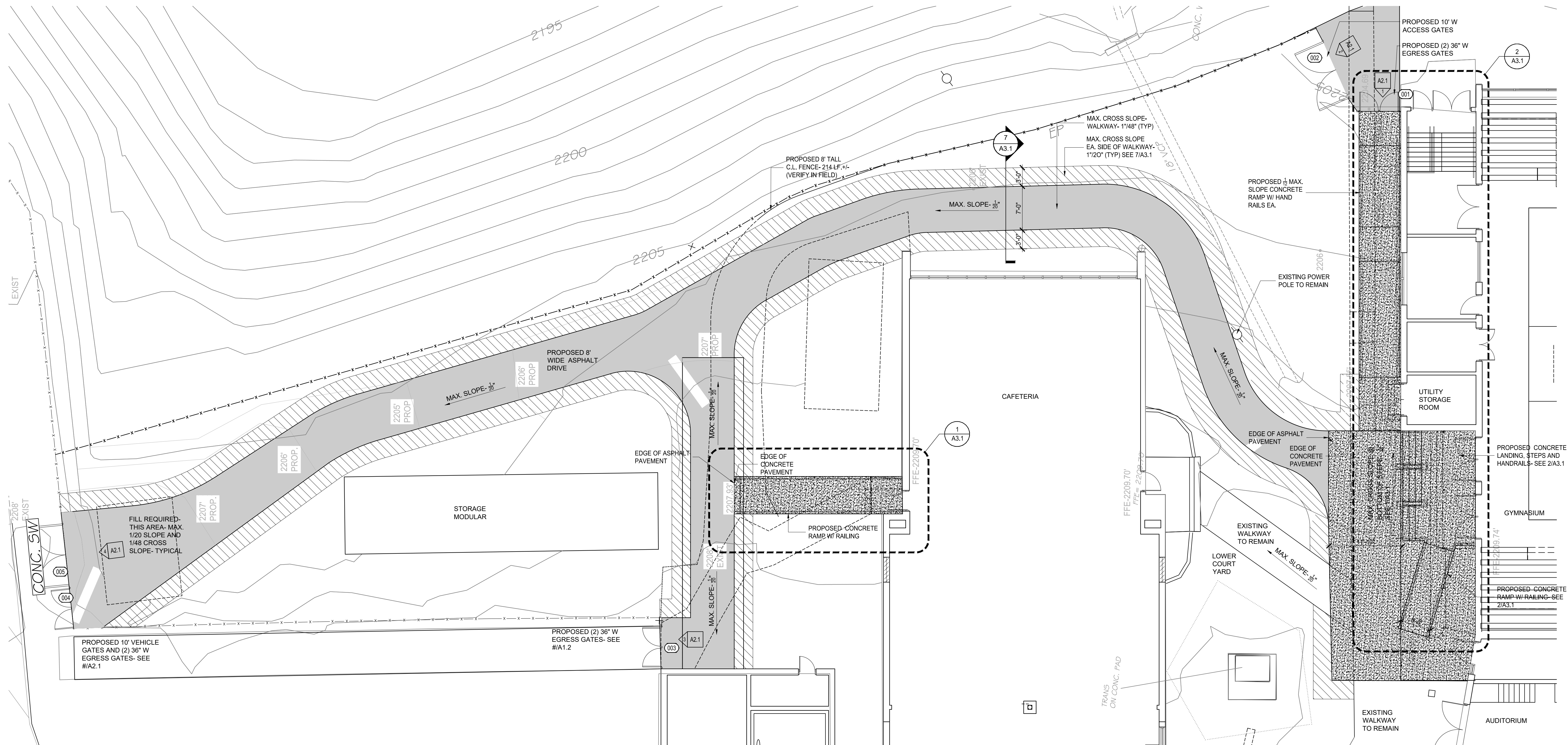
Include:

- Revised A1.1 and A2.1 (revision in cloud and marked delta 1)
- Asphalt sidewalk on plan view- upper level has been changed to concrete
- Chain link fence specification
- Card reader hardware and install shall be done by A3 communications. Owner provided.
- Pre bid conference attendance sheet

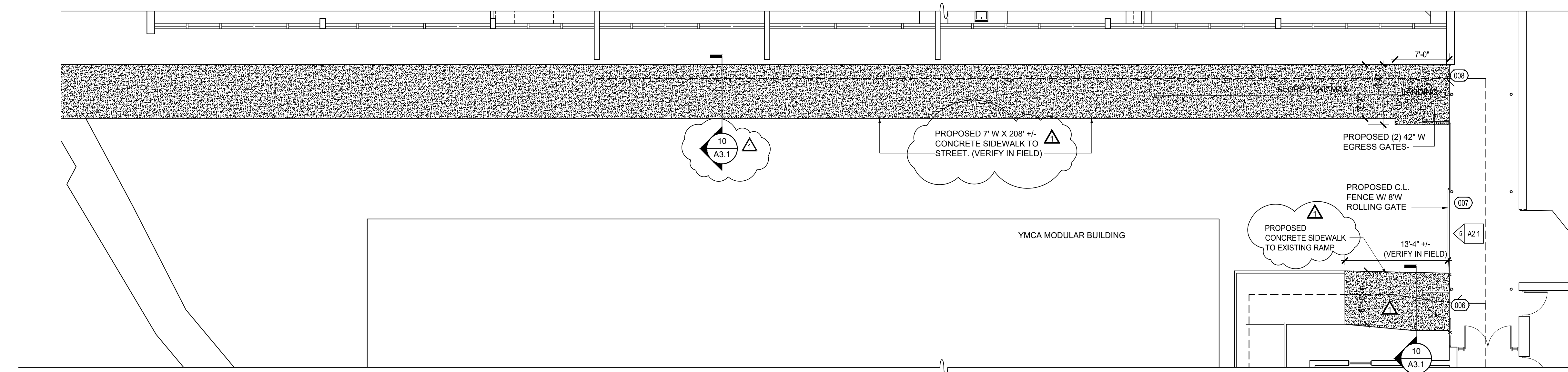
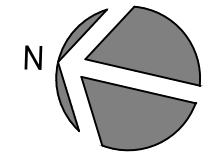
Erwin Middle school secure campus perimeter Sign-in sheet

Company Name	Person Who Attended	Email Address
B. Allen Construction, Inc.	Brad Allen	ballen84@bellsouth.net
Beverly-Grant, Inc.	Ryan Boyle	Rboyle@beverly-grant.com
BH Graning Landscapes, Inc.	Denise Waltz	denise.waltz@bhlandscapes.com
J. Bartholomew Construction	Lauren Bartholomew	Lauren@div7.org
MillWright Fence Company	Phil	dnmills136@hotmail.com
Smart Builders Construction	Max Deholl	info@smartbuilders.com
Smathers Contracting, LLC	Joshua Smathers	Joshsmath@gmail.com

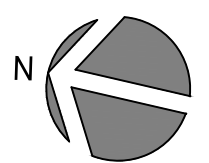
End of Addendum 2

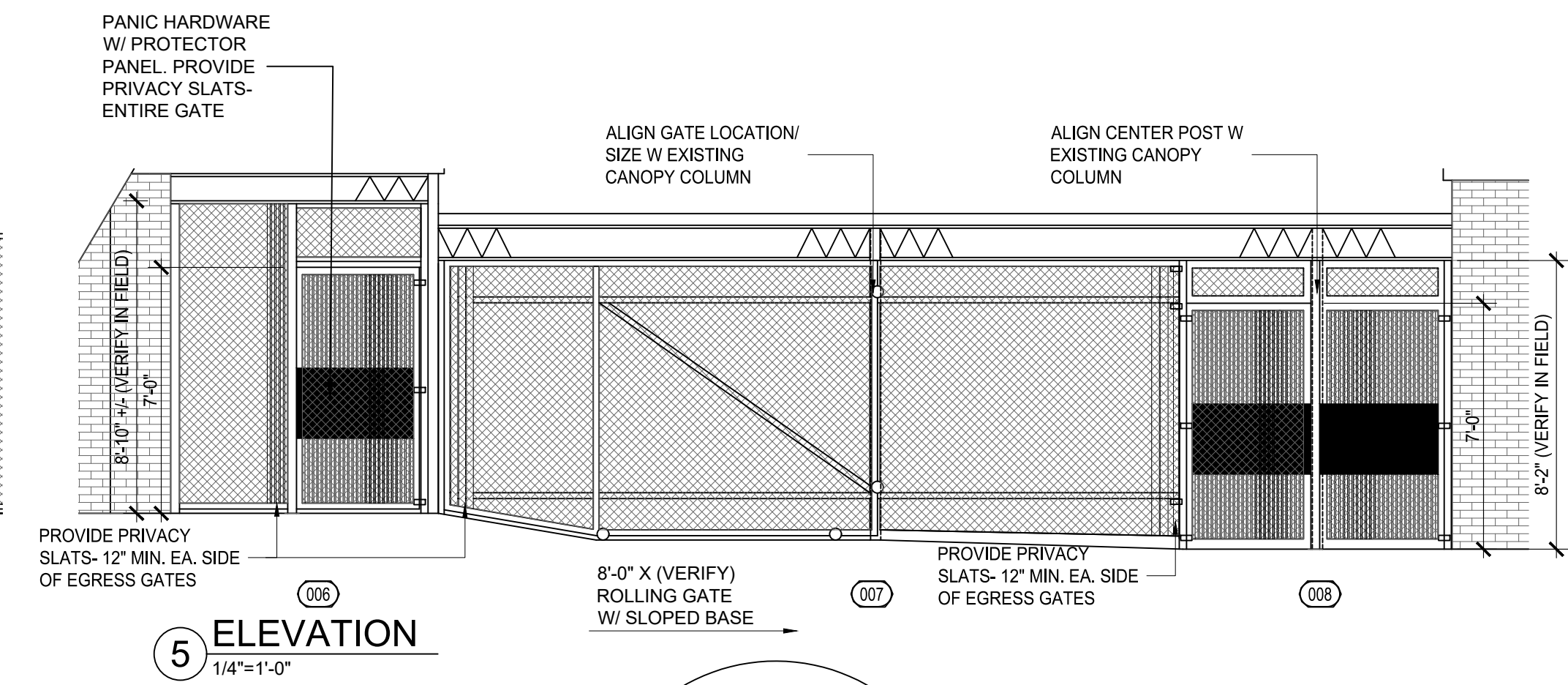
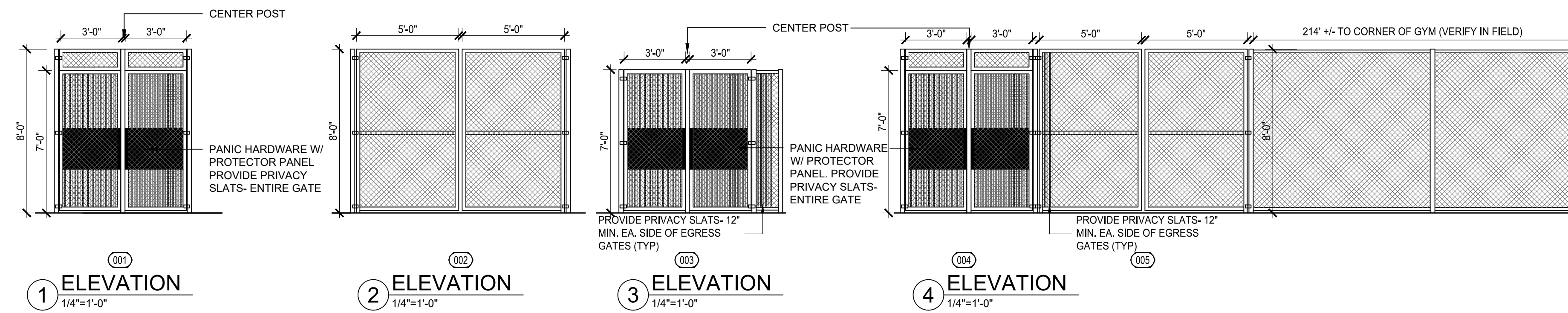


1 PLAN VIEW- LL COURTYARD AND BUS DROP OFF
1/8"=1'-0"



2 PLAN VIEW- UPPER LEVEL GATE AND FENCE
1/8"=1'-0"





DOOR SCHEDULE												
DOOR NO.	LOCATION	DOOR TYPE	WIDTH X HEIGHT	THK.	MAT'L	FRAME	DETAILS			UL RAT.	HDW	REMARKS
							HEAD	JAMB	SILL			
001	CORNER OF GYM	-	(2) 3'-0" X 7'-0" GATES W/ CENTER MULLION		STEEL & CH. LINK						HW-02	EGRESS GATES
002	CORNER OF GYM	-	(2) 5'-0" X 8'-0" GATES W/ NO CENTER MULLION		STEEL & CH. LINK						HW-04	VEHICLE ACCESS
003	KITCHEN/ CAFETERIA	-	(2) 3'-0" X 7'-0" GATES W/ CENTER MULLION		STEEL & CH. LINK						HW-01	EGRESS GATES WITH CARD ACCESS
004	BUS DROP OFF	-	(2) 3'-0" X 7'-0" GATES W/ CENTER MULLION		STEEL & CH. LINK						HW-02	EGRESS GATES
005	BUS DROP OFF	-	(2) 5'-0" X 8'-0" GATES W/ NO CENTER MULLION		STEEL & CH. LINK						HW-04	VEHICLE ACCESS
006	TO YMCA MODULAR	-	(1) 3'-6" X 7'-0" GATE		STEEL & CH. LINK						HW-01	EGRESS GATE W/ CARD ACCESS
007	ADJACENT TO YMCA MODULAR	-	8'-0" W ROLLING GATE		STEEL & CH. LINK					△	HW-03	VEHICLE ACCESS
008	ADJACENT TO CTE BUILDING	-	(2) 3'-6" X 7'-0" GATES W/ CENTER MULLION		STEEL & CH. LINK						HW-02	EGRESS GATES

CARD ACCESS READERS AND PANIC HARDWARE BY OTHERS

HARDWARE SCHEDULE			
PANIC HARDWARE AND CARD READER TO BE BY OWNER'S CONTRACTOR- A3 AS NOTED IN THIS SCHEDULE. CONTACT FOR A3- Jaimon Perry (864 672-0273) jperry@a3communications.com. GENERAL CONTRACTOR TO COORDINATE INSTALLATION OF THESE ITEMS. ALL OTHER HARDWARE IN THIS SCHEDULE IS TO BE SUPPLIED AND INSTALLED BY THE GENERAL CONTRACTOR			
HARDWARE GROUP NO. HW-01			
FOR USE ON MARK/DOOR #(S): 003, 006 GATES (adjacent to cafeteria/ kitchen, to YMCA modular)			
to have:			
Qt.	Description	Catalog Number	Finish Mfg
8 ea	HINGE	5B81 HW 5 X 4.5 NRP	BLK IVE
2 ea	PANIC HARDWARE (by A3)	99-EC-WH	315 VON
1 ea	ELECT. EXIT DEVICE (by A3)	AD-400-993R-70-MT-TLR-P-48	643e SCE
	TRIM	-400-993R-70-MT-TLR-P-48	643e SCE
		BATTERY OPERATED BY SECURITY INTEGRATOR	
2ea	GATE PLATE	BY GATE MANUF. - TO SECURE BLK PANIC DEVICES TO GATES	
1 ea	GATE CENTER POST	BY GATE MANUF. - ATTACH STRIKE BLK BOXES FOR PANIC LATCHING	
1 ea	PIM (By A3)	PIM400-48S AS REQ'D. SITE SURVEY TO DETERMINE QUANTITY REQ'D- BY SECURITY INTEGRATOR	
1		BALANCE OF HARDWARE BY GATE MANUF.	
GATE NORMALLY CLOSED AND LOCKED. VALID KEY OR CREDENTIAL TO LOCK MOUNTED READER LOCK TO UNLOCK AND PERMIT ENTRANCE FROM LOWER LEVEL PLAYGROUND. FREE EGRESS AT ALL TIMES. COORDINATE WITH ELECTRICAL AND SECURITY			
HARDWARE GROUP NO. HW-02			
FOR USE ON MARK/DOOR #(S): 001, 004, 008			
to have:			
Qt.	Description	Catalog Number	Finish Mfg
8 ea	HINGE	5B81 HW 5 X 4.5 NRP	BLK IVE
2 ea	PANIC HARDWARE (by A3)	99-EC-WH	315 VON
1 ea	ELECT. EXIT DEVICE (by A3)	-400-993R-70-MT-TLR-P-48	643e SCE
	TRIM	-400-993R-70-MT-TLR-P-48	643e SCE
		BATTERY OPERATED BY SECURITY INTEGRATOR	
2ea	GATE PLATE	BY GATE MANUF. - TO SECURE BLK PANIC DEVICES TO GATES	
1 ea	GATE CENTER POST	BY GATE MANUF. - ATTACH STRIKE BLK BOXES FOR PANIC LATCHING	
1		BALANCE OF HARDWARE BY GATE MANUF.	
GATE NORMALLY CLOSED AND LOCKED. FREE EGRESS AT ALL TIMES.			
HARDWARE GROUP NO. HW-03			
FOR USE ON MARK/DOOR #(S): 007			
to have:			
Qt.	Description	Catalog Number	Finish Mfg
1 ea	PADLOCK LESS CYL-KNK	KS23D2200	606 SCH
1		BALANCE OF HARDWARE BY GATE MANUFACTURER	
HARDWARE GROUP NO. HW-04			
FOR USE ON MARK/DOOR #(S): 002, 005			
to have:			
Qt.	Description	Catalog Number	Finish Mfg
8 ea	HINGE	5B81HW 5 X 4.5 NRP	BLK IVE
1 ea	PADLOCK LESS CYL-KNK	KS23D2200	606 SCH
1		BALANCE OF HARDWARE BY GATE MANUFACTURER	

Specifications: All fencing shall be galvanized 9ga., double knuckle, commercial grade and shall include line posts, top rail and bottom tension wire.

All posts to be Schedule 40 commercial grade weight. All posts shall be installed in concrete footers and capped.

Gates include posts, caps and hinges.

Bar gates shall be round tubular 10-1/2, 16 ft. heavy duty commercial grade construction and include:

- Hot dip galvanized steel gate
- pivot & lock posts (installed with concrete footer)
- Lock assembly
- Hinges, brackets and hardware
- Installation (any cutting, or welding included)

Material: All material should be according to ASTM standards. material for the chain link fence shall be as follows:

1. Galvanized: Chain link fence fabric shall conform to the requirements of ASTM A 392, 2-inch mesh and 9- gauge galvanized steel wire. Zinc coating shall be class 2. Posts and fence framework shall conform to the requirements of ASTM F 1043 Group 1 A, for heavy industrial fence. Coatings shall be a type A galvanized coating for internal and external surfaces. Steel pipe posts shall conform to the requirements of ASTM F 1043 and F 1083. Fence fittings shall conform to the requirements of ASTM F 626. Fittings shall be galvanized steel. Wire ties and clips shall be 9-gauge.

Gates, gateposts, and gate accessories shall conform to the requirements of ASTM F 900. Coating shall be the same as selected for adjoining fence and framework.

2. Installing fence posts: Unless otherwise specified, line posts shall be placed at intervals of 10 feet measured from center to center of adjacent posts. In determining the post spacing, measurement is made parallel with the ground surface. Posts set in the tops of concrete walls shall be grouted into preformed holes to a depth of 12-inches. All corner posts, end posts, gateposts, and pull posts shall be embedded, braced, and trussed in accordance with appropriate industry practice if not otherwise shown or specified.

4. Concrete: Concrete for post footings shall have a 28-day compressive strength of 2,500 psi.

5. Nuts and bolts: Carriage bolts used for fittings shall be installed with the head on the secure side of the fence. All bolts shall be peened over to prevent removal of the nut.

Industry standards:

- A. Posts:** Posts shall be set plumb in concrete footings in accordance with ASTM F567. Minimum footing depth, 24 in. (609.6 mm) plus an additional 3 in. (76.2 mm) depth for each 1 ft. (305 mm) increase in the fence height over 4 ft. (1220 mm). Minimum footing diameter four times the largest cross section of the post up to a 4.00" (101.6 mm) dimension and three times the largest cross section of post greater than a 4.00" (101.6 mm) dimension.
- B. Top rail:** When specified, install 21 ft. (6.4 m) lengths of rail continuous thru the line post or barb arm loop top. Splice rail using top rail sleeves minimum 6 in. (152 mm) long. Rail shall be secured to the terminal post by a brace band and rail end. Bottom rail or intermediate rail shall be field cut and secured to the line posts using boulevard clamps or brace band with rail end.
- C. Terminal posts:** End, corner, pull and gate posts shall be braced and trussed for fence 6 ft. (1.8 m) and higher and for fences 5 ft. (1.5 m) in height not having a top rail. The horizontal brace rail and diagonal truss rod shall be installed in accordance with ASTM F567.
- D. Tension wire:** Shall be installed 4 in. (101.6 mm) up from the bottom of the fabric. Fences without top rail shall have a tension wire installed 4 in. (101.6 mm) down from the top of the fabric. Tension wire to be stretched taut, independently and prior to the fabric, between the terminal posts and secured to the terminal post using a brace band. Secure the tension wire to each line post with a tie wire.

Gate Installation

- A. Swing Gates:** Installation of swing gates and gateposts in compliance with ASTM F 567. Direction of swing shall be determined per job (inward or outward). Gates shall be plumb in the closed position having a bottom clearance of 3 in. (76 mm), grade permitting. Hinge and latch offset opening space shall be no greater than 3 in. (76 mm) in the closed position. Double gate drop bar receivers shall be set in a concrete footing minimum 6 in. (152 mm) diameter 24 in. (609.6 mm) deep. Gate leaf holdbacks shall be installed for all double gates. Electrically operated gates must be manufactured and installed in compliance with ASTM F2200 and UL 325.

