

Erwin Middle School- Secure Campus Perimeter

20 Erwin Hills Road, Asheville, NC 28806

PROJECT DESCRIPTION:

WORK INVOLVES:
BASE BID- NEW CONCRETE LANDINGS, STEPS RAMPS AND RAILINGS, REWORK OF EXISTING PAVEMENT, NEW ASPHALT PAVEMENT, CHAIN LINK FENCE AND GATES AND HARDWARE AS SHOWN ON THE DRAWINGS.

ALTERNATE 1- DEDUCT FOR ALL ASPHALT PAVEMENT AND SUB-GRADE WORK.

ALTERNATE 2- DEDUCT FOR ALL FENCE, GATES AND HARDWARE WORK.

CONTRACTOR IS RESPONSIBLE FOR OBTAINING AND PAYING ALL COSTS ASSOCIATED W/ BUNCOMBE COUNTY PERMITS.

GENERAL NOTES

1. PRIOR TO ANY SITE DISTURBANCE, CONTRACTOR SHALL PROVIDE EXISTING SITE SURVEY AND SITE GRADING PLAN FOR REVIEW BY THE ARCHITECT TO CONFIRM THE EXTENT OF NEW GRADING REQUIRED AND COMPLIANCE WITH THE DESIGN INTENT OF THE ADA COMPLIANT SITE IMPROVEMENTS INDICATED IN THESE DOCUMENTS.
2. PRIOR TO CONSTRUCTION, CONTRACTOR SHALL FIELD VERIFY EXISTING DIMENSIONS AND NOTIFY ARCHITECT OF ANY DISCREPANCIES THAT WILL IMPACT THE DESIGN INTENT OF THE ADA COMPLIANT IMPROVEMENTS INDICATED IN THESE DOCUMENTS.
3. ALL EQUIPMENT, FIXTURES, HARDWARE AND ACCESSORIES PROVIDED ARE TO COMPLY WITH 2010 ADA STANDARDS FOR ACCESSIBLE DESIGN BY THE US DEPARTMENT OF JUSTICE AND ICC A117.1-2009 ACCESSIBLE AND USABLE BUILDINGS AND FACILITIES. ALL PRODUCTS IDENTIFIED INDICATE BASIS OF DESIGN, REFER TO SPECIFICATIONS FOR ADDITIONAL INFORMATION.
4. ALL EXISTING MATERIALS TO REMAIN ARE TO BE PROTECTED AND CLEANED TO REMOVE EXISTING DEBRIS WITHOUT DAMAGING FINISHES.
5. NEATLY SEAL NEW MATERIALS TO EXISTING MATERIAL AND SURFACES.
6. WHERE EXISTING GRADE OR GRASS IS DISTURBED, RE-GRADE TO A SMOOTH SLOPE. PROVIDE 4" TOP SOIL, SLOPE STABILIZATION AND A STAND OF GRASS. PROVIDE A MIX OF COLD AND WARM WEATHER GRASSES AND MATTING (EVEN IF HYDROSEEDING); NO STRAW.
7. POUR THICKENED TURN-DOWN SLAB EDGES AT ALL EXTERIOR SLABS LOCATED AT EXTERIOR DOORS FOR THE FULL LENGTH OF THE SLAB, REFER TO SECTIONS AND DETAILS.
8. PROVIDE 1:48 CROSS SLOPE AT RAMPS, LANDINGS AND WALKS AND CONCRETE SLABS.
9. PROVIDE ISOLATION / EXPANSION JOINTS AT NEW TO EXISTING SLAB CONNECTIONS AND AT ALL NEW DOOR OPENINGS AS INDICATED, REFER TO SECTIONS, DETAILS AND FOUNDATION PLAN.
10. PROTECT EXISTING PLANTED AREAS AND TREES DURING CONSTRUCTION. AVOID DAMAGE TO ALL PLANTS AND THEIR ROOT SYSTEMS.
11. STEEL IDENTIFIED AS GALVANIZED OR HG REFERS TO HOT DIP GALVANIZED, UNLESS NOTED OTHERWISE.

OWNER CONTACTS:

DESIGN AND TECHNICAL CONTACT:

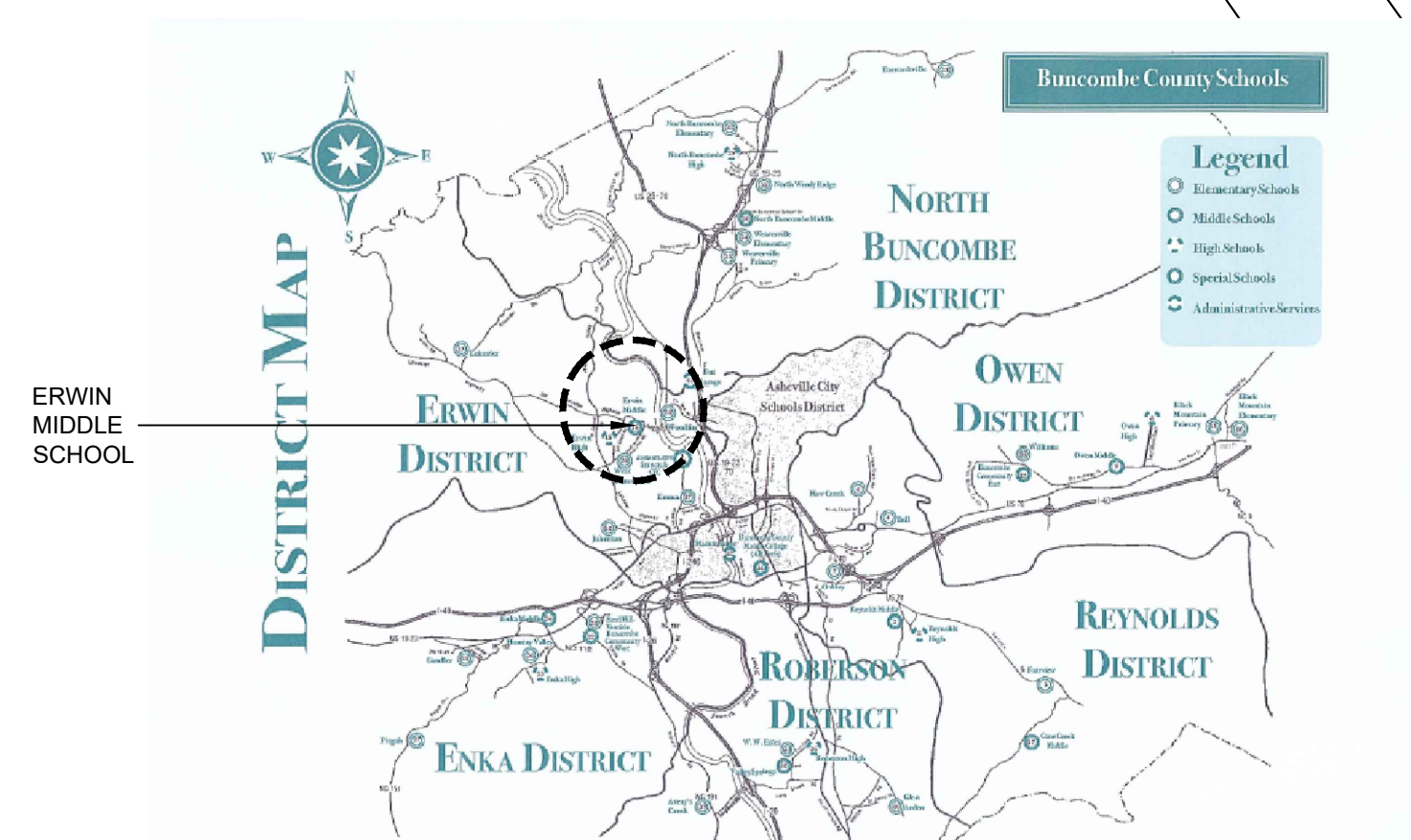
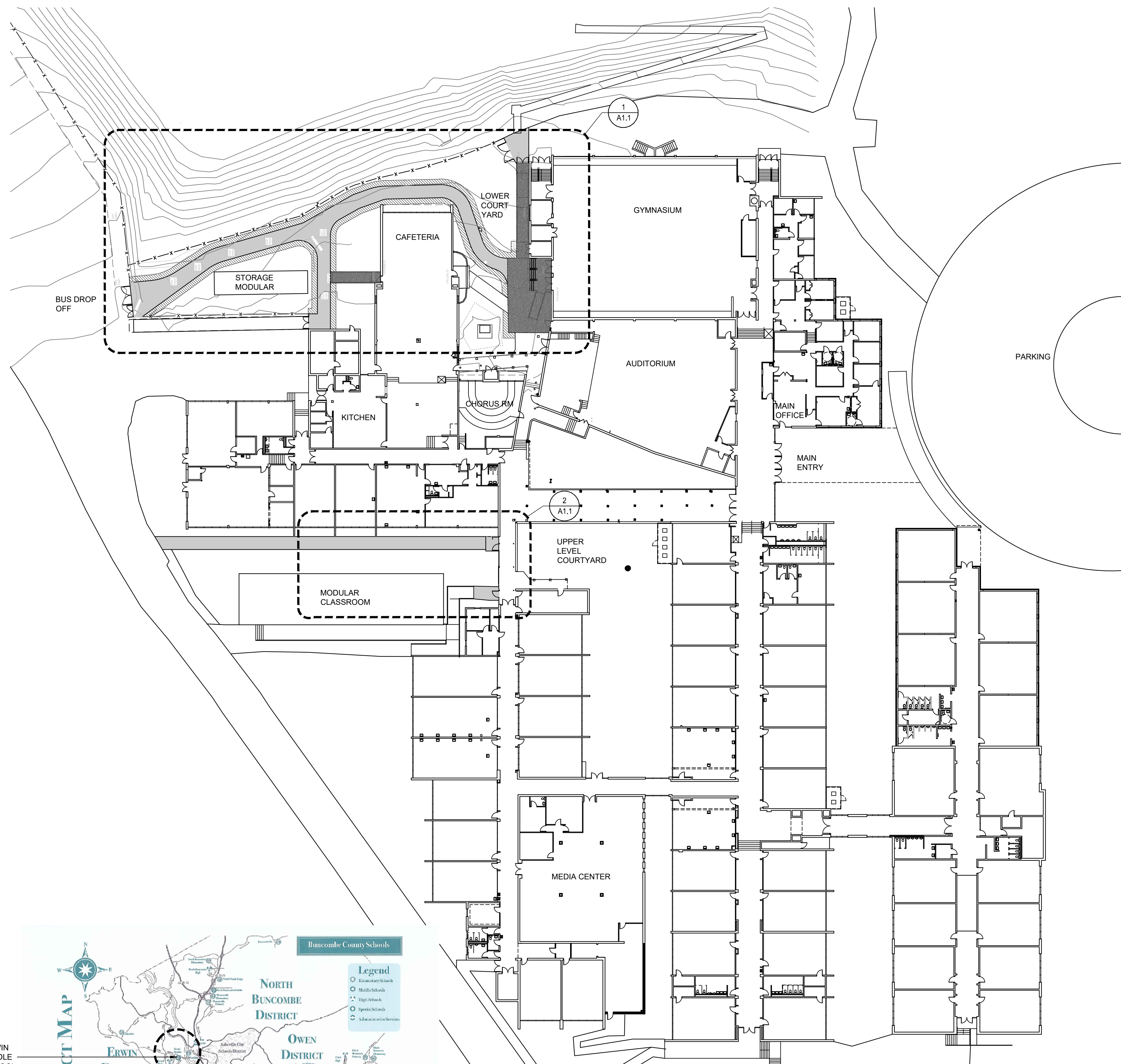
CAROL HENNE FAY
ASST. FACILITIES DIRECTOR, BUNCOMBE CO. SCHOOLS
PHONE: 828-255-5917
FAX: 828-255-5923

BIDDING & ADMINISTRATIVE CONTACT:

TIFFANY McCANTS
PURCHASING OFFICER
PHONE: 828-255-5891
FAX: 828-251-1730

SHEET INDEX:

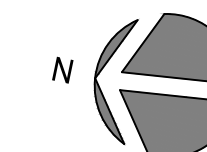
COVER	
LS0.1	APPENDIX B FROM 2001 PROJECT
LS1.1	EGRESS PLAN
D1.1	DEMOLITION PLAN
A1.1	PLAN VIEWS
A2.1	GATE AND FENCE ELEVATIONS, GATE HARDWARE
A3.1	SECTIONS AND DETAILS- RAMPS, WALKWAYS AND STEPS



VICINITY MAP

PROJECT SITE

SCALE- 1/32"=1'-0"



**Buncombe County Schools
Facilities and Planning**

Timothy Fierle AIA, Director

175 Bingham Road Asheville, N.C. 28806-3800

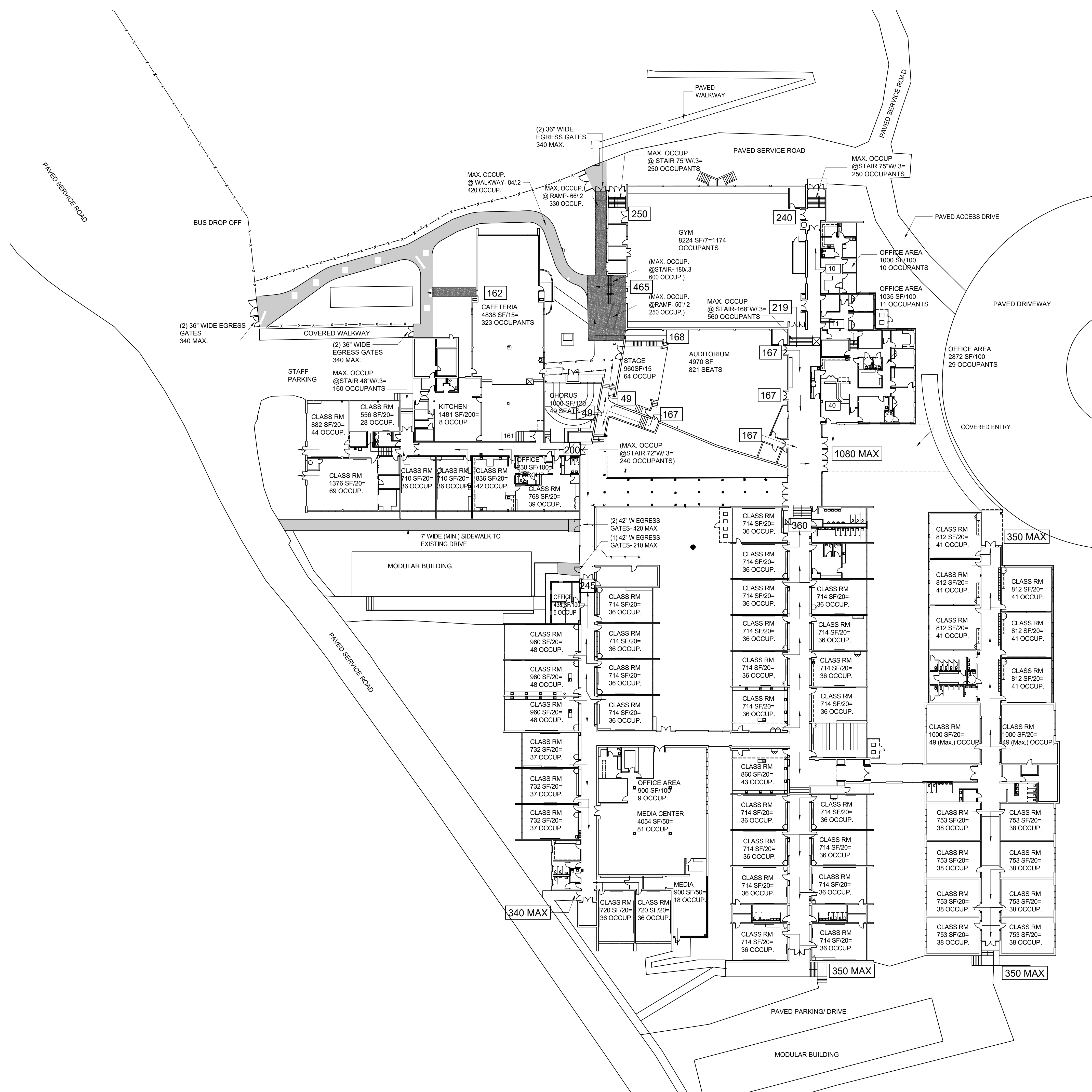
Phone: (828) 255-5916 Fax: (828) 255-5923



COVER

DESIGNED BY: CHF
DATE: 02.19.2020

PERMIT SET

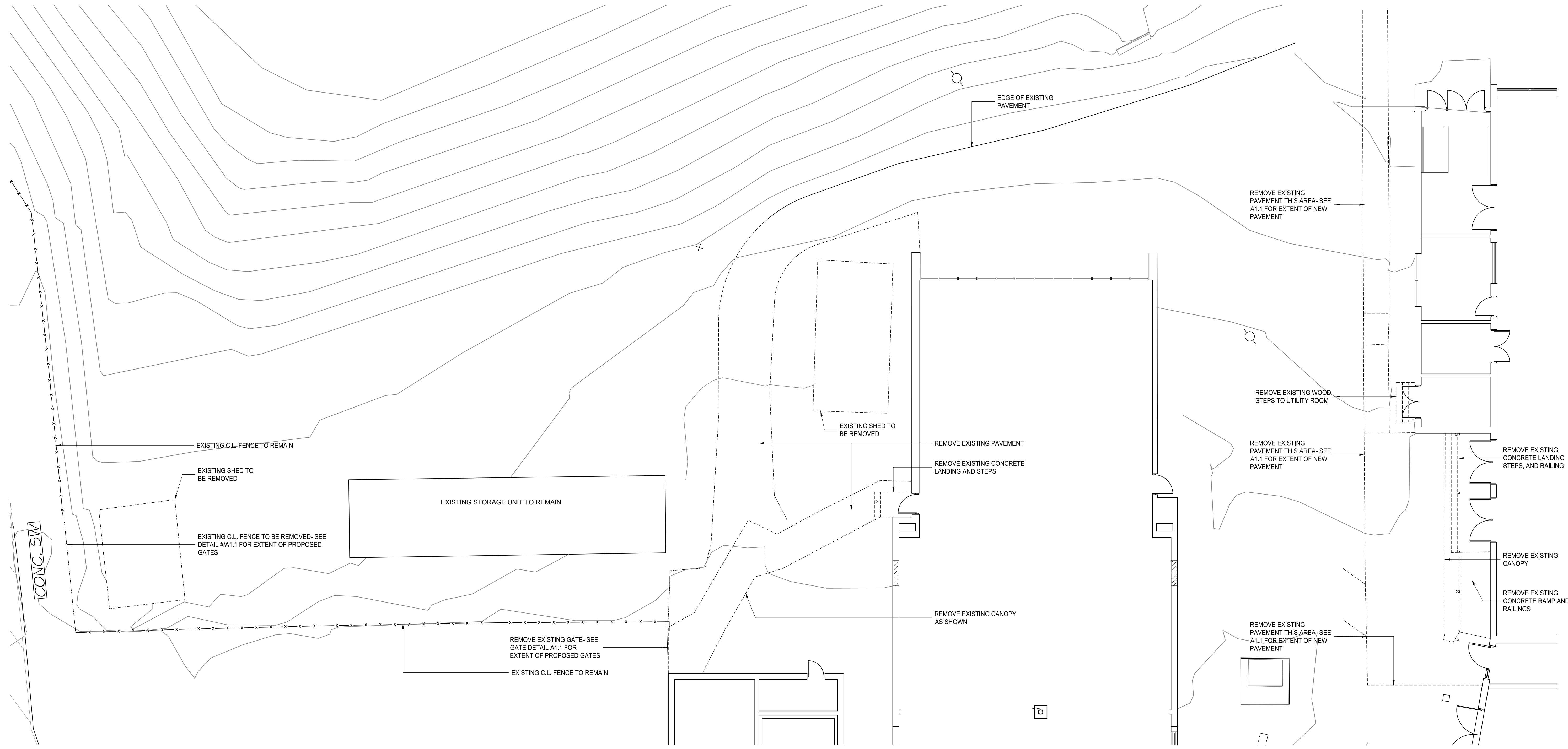


**Buncombe County Schools
Facilities and Planning**

Timothy Fierle AIA, Director
175 Bingham Road □ Asheville, N.C. 28806-3800
Phone: (828) 255-5916 Fax: (828) 255-5923



1 EGRESS PLAN
1"=30'



1 DEMOLITION PLAN- LL COURTYARD AND BUS DROP OFF
1/8"=1'-0"

**Buncombe County Schools
Facilities and Planning**

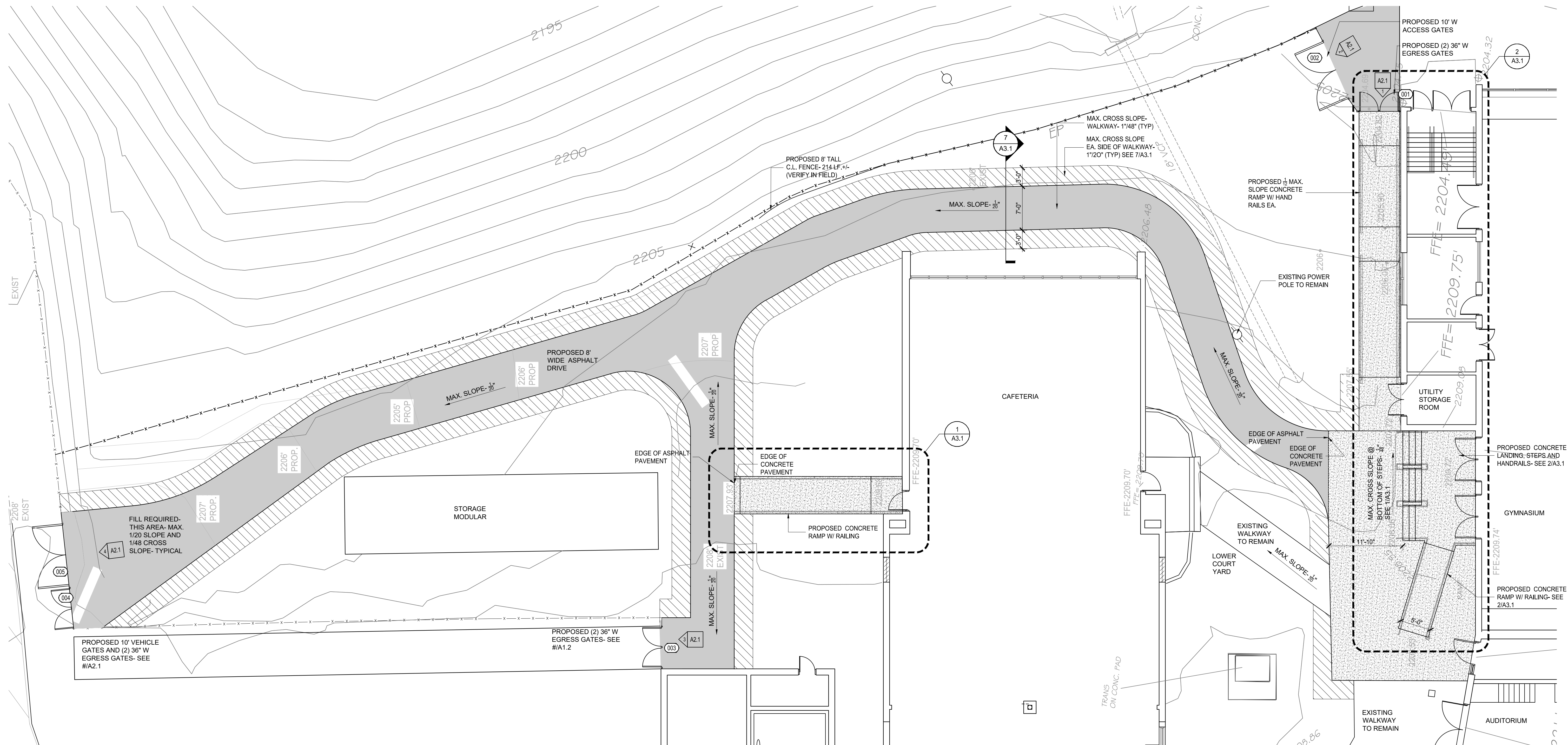
Timothy Fierle AIA, Director
175 Bingham Road □ Asheville, N.C. 28806-3800
Phone: (828) 255-5916 Fax: (828) 255-5923



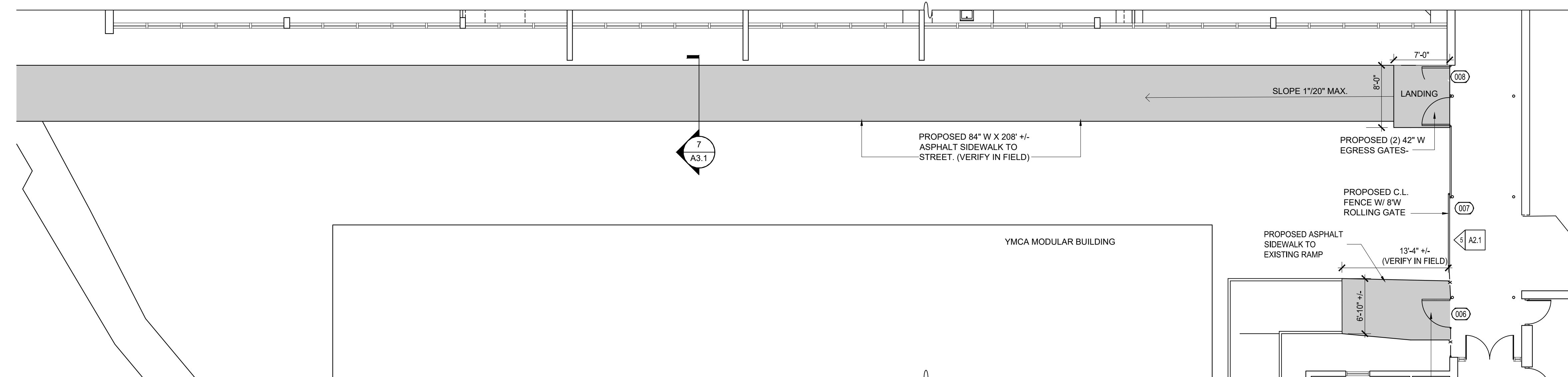
D1.1

DESIGNED BY: CHF
DATE: 02.19.2020

PERMIT SET



1 PLAN VIEW- LL COURTYARD AND BUS DROP OFF
1/8"=1'-0"



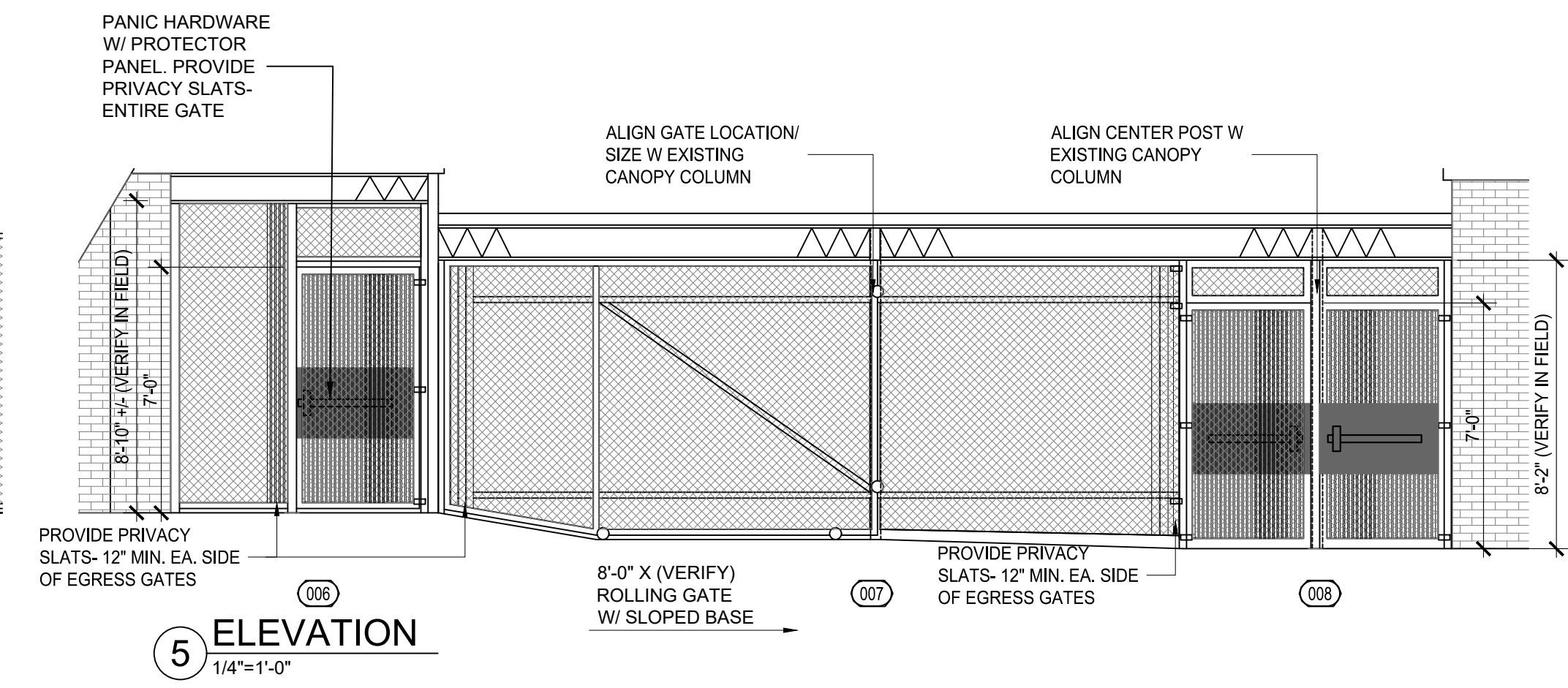
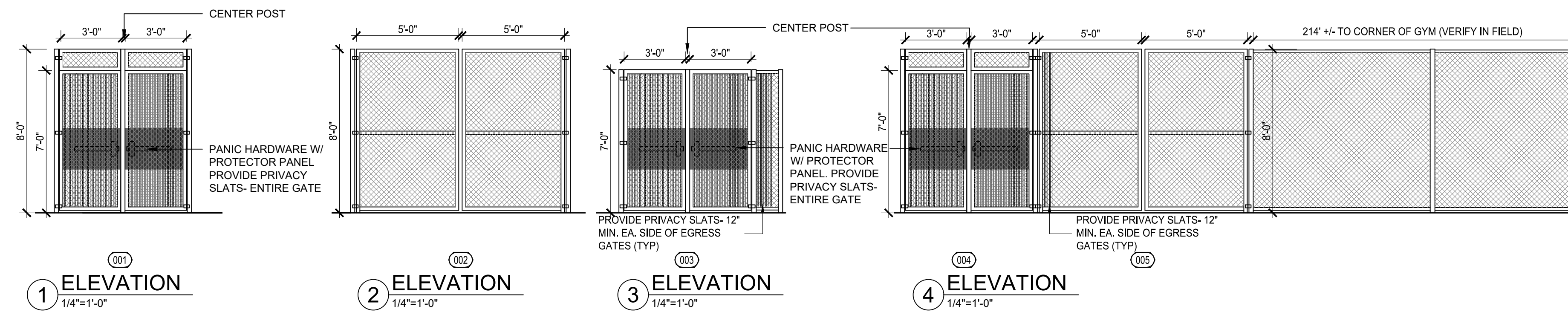
2 PLAN VIEW- UPPER LEVEL GATE AND FENCE
1/8"=1'-0"



A1.1

DESIGNED BY: CHF
DATE: 02.19.2020

PERMIT SET

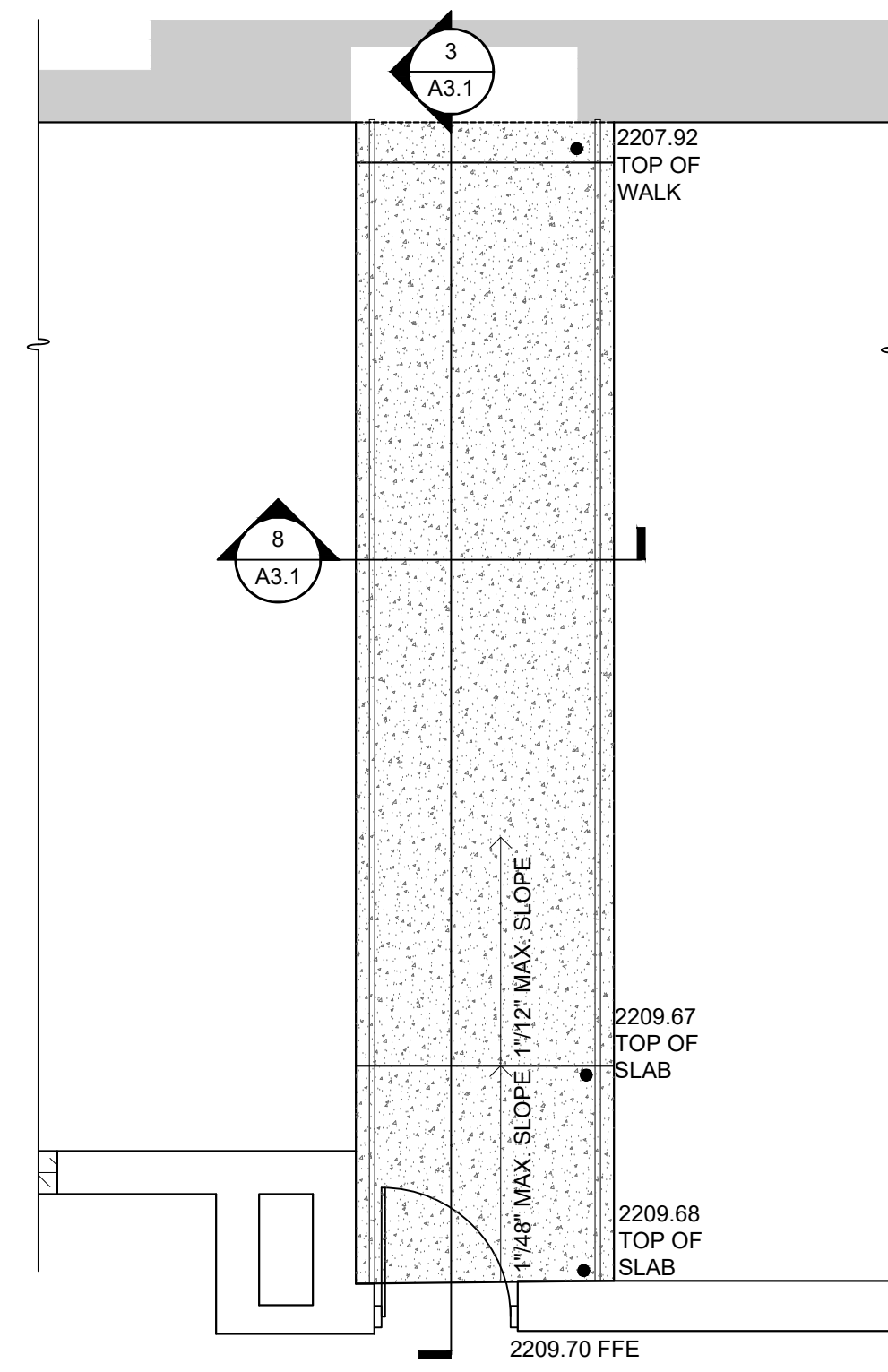


DOOR SCHEDULE													
DOOR NO.	LOCATION	DOOR TYPE	WIDTH x HEIGHT	THK.	MAT'L	FRAME	FRAME TYPE	DETAILS			UL RAT.	HDW	REMARKS
								HEAD	JAMB	SILL			
001	CORNER OF GYM	-	(2) 3'-0" X 7'-0" GATES W/ CENTER MULLION		STEEL & CH. LINK							HW-02	EGRESS GATES
002	CORNER OF GYM	-	(2) 5'-0" X 8'-0" GATES W/ NO CENTER MULLION		STEEL & CH. LINK							HW-04	VEHICLE ACCESS
003	KITCHEN/ CAFETERIA	-	(2) 3'-0" X 7'-0" GATES W/ CENTER MULLION		STEEL & CH. LINK							HW-01	EGRESS GATES WITH CARD ACCESS
004	BUS DROP OFF	-	(2) 3'-0" X 7'-0" GATES W/ CENTER MULLION		STEEL & CH. LINK							HW-02	EGRESS GATES
005	BUS DROP OFF	-	(2) 5'-0" X 8'-0" GATES W/ NO CENTER MULLION		STEEL & CH. LINK							HW-04	VEHICLE ACCESS
006	TO YMCA MODULAR	-	(1) 3'-6" X 7'-0" GATE		STEEL & CH. LINK							HW-01	EGRESS GATE W/ CARD ACCESS
007	ADJACENT TO YMCA MODULAR	-	8'-0"W ROLLING GATE		STEEL & CH. LINK							HW-04	VEHICLE ACCESS
008	ADJACENT TO CTE BUILDING	-	(2) 3'-6" X 7'-0" GATES W/ CENTER MULLION		STEEL & CH. LINK							HW-02	EGRESS GATES
CARD ACCESS READERS BY OTHERS													

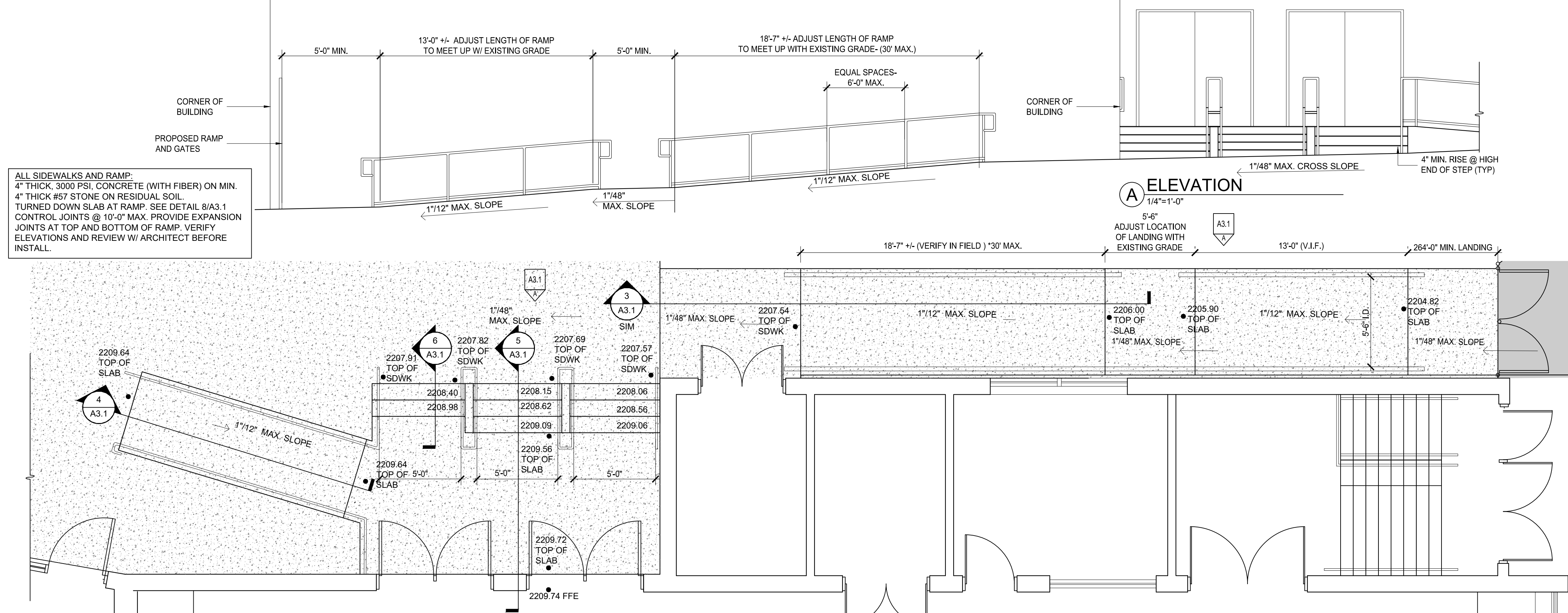
HARDWARE SCHEDULE			
HARDWARE GROUP NO. HW-01			
FOR USE ON MARK/DOOR #(S): 003, 006 GATES (adjacent to cafeteria/ kitchen, to YMCA modular)			
to have:			
Qt.	Description	Catalog Number	Finish Mfg
8 ea	HINGE	5B81 HW 5 X 4.5 NRP	BBLK IVE
2 ea	PANIC HARDWARE	99-EO-WH	315 VON
1 ea	ELECT. EXIT DEVICE TRIM	AD-400-993R-70-MT-TLR-P 48	643e SCE
BATTERY OPERATED BY SECURITY INTEGRATOR			
2ea	GATE PLATE	BY GATE MANUF.- TO SECURE PANIC DEVICES TO GATES	BLK
1 ea	GATE CENTER POST	BY GATE MANUF. - ATTACH STRIKE BOXES FOR PANIC LATCHING	BLK
1 ea	PIM (BY OTHERS)	PIM400-485 AS REQD. SITE SURVEY TO DETERMINE QUANTITY REQD- BY SECURITY INTEGRATOR	SCE
BALANCE OF HARDWARE BY GATE MANUF.			
GATE NORMALLY CLOSED AND LOCKED. VALID KEY OR CREDENTIAL TO LOCK MOUNTED READER. LOCK TO UNLOCK AND PERMIT ENTRANCE FROM LOWER LEVEL PLAYGROUND. FREE EGRESS AT ALL TIMES. COORDINATE WITH ELECTRICAL AND SECURITY			
HARDWARE GROUP NO. HW-02			
FOR USE ON MARK/DOOR #(S): 001,004,008			
to have:			
Qt.	Description	Catalog Number	Finish Mfg
8 ea	HINGE	5B81 HW 5 X 4.5 NRP	BBLK IVE
2 ea	PANIC HARDWARE	99-EO-WH	315 VON
1 ea	ELECT. EXIT DEVICE TRIM	AD-400-993R-70-MT-TLR-P 48	643e SCE
BATTERY OPERATED BY SECURITY INTEGRATOR			
2ea	GATE PLATE	BY GATE MANUF.- TO SECURE PANIC DEVICES TO GATES	BLK
1 ea	GATE CENTER POST	BY GATE MANUF. - ATTACH STRIKE BOXES FOR PANIC LATCHING	BLK
BALANCE OF HARDWARE BY GATE MANUF.			
GATE NORMALLY CLOSED AND LOCKED.FREE EGRESS AT ALL TIMES.			
HARDWARE GROUP NO. HW-03			
FOR USE ON MARK/DOOR #(S): 001,004,008			
to have:			
Qt.	Description	Catalog Number	Finish Mfg
4 ea	HINGE	5B81 HW 5 X 4.5 NRP	BBLK IVE
1 ea	PANIC HARDWARE	99-EO-WH	315 VON
1 ea	ELECT. EXIT DEVICE TRIM	AD-400-993R-70-MT-TLR-P 48	643e SCE
BATTERY OPERATED BY SECURITY INTEGRATOR			
1ea	GATE PLATE	BY GATE MANUF.- TO SECURE PANIC DEVICES TO GATES	BLK
BALANCE OF HARDWARE BY GATE MANUF.			
GATE NORMALLY CLOSED AND LOCKED.FREE EGRESS AT ALL TIMES.			
HARDWARE GROUP NO. HW-04			
FOR USE ON MARK/DOOR #(S): 002,005,007			
to have:			
Qt.	Description	Catalog Number	Finish Mfg

**Buncombe County Schools
Facilities and Planning**
Timothy Fierle AIA, Director
175 Bingham Road □ Asheville, N.C. 28806-3800
Phone: (828) 255-5916 Fax: (828) 255-5923

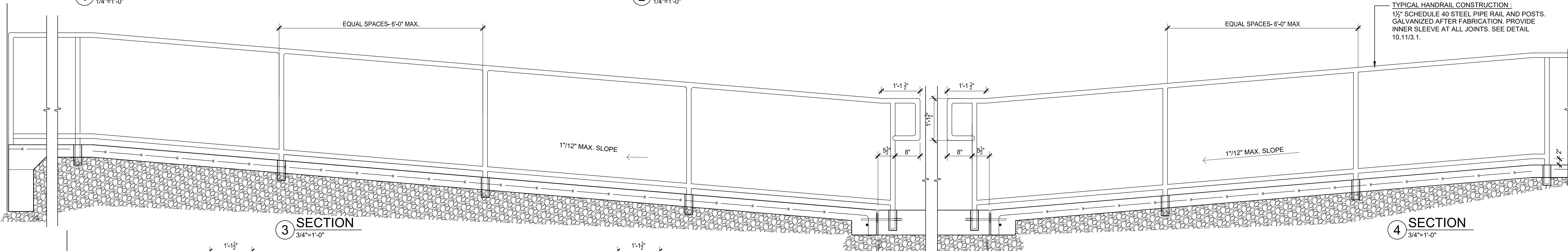




1 ENLARGED PLAN
1/4"=1'-0"

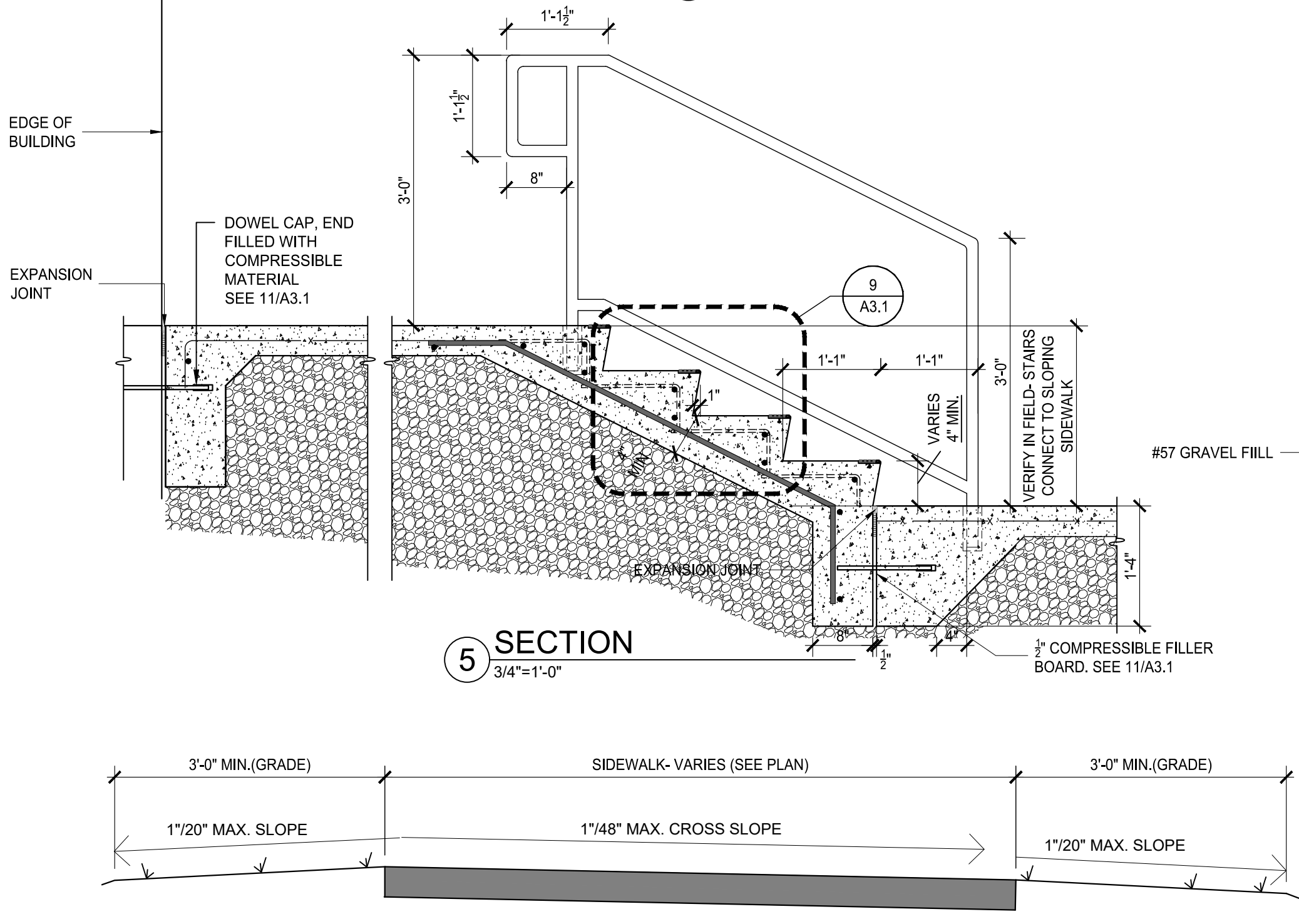


2 ENLARGED PLAN
1/4"=1'-0"



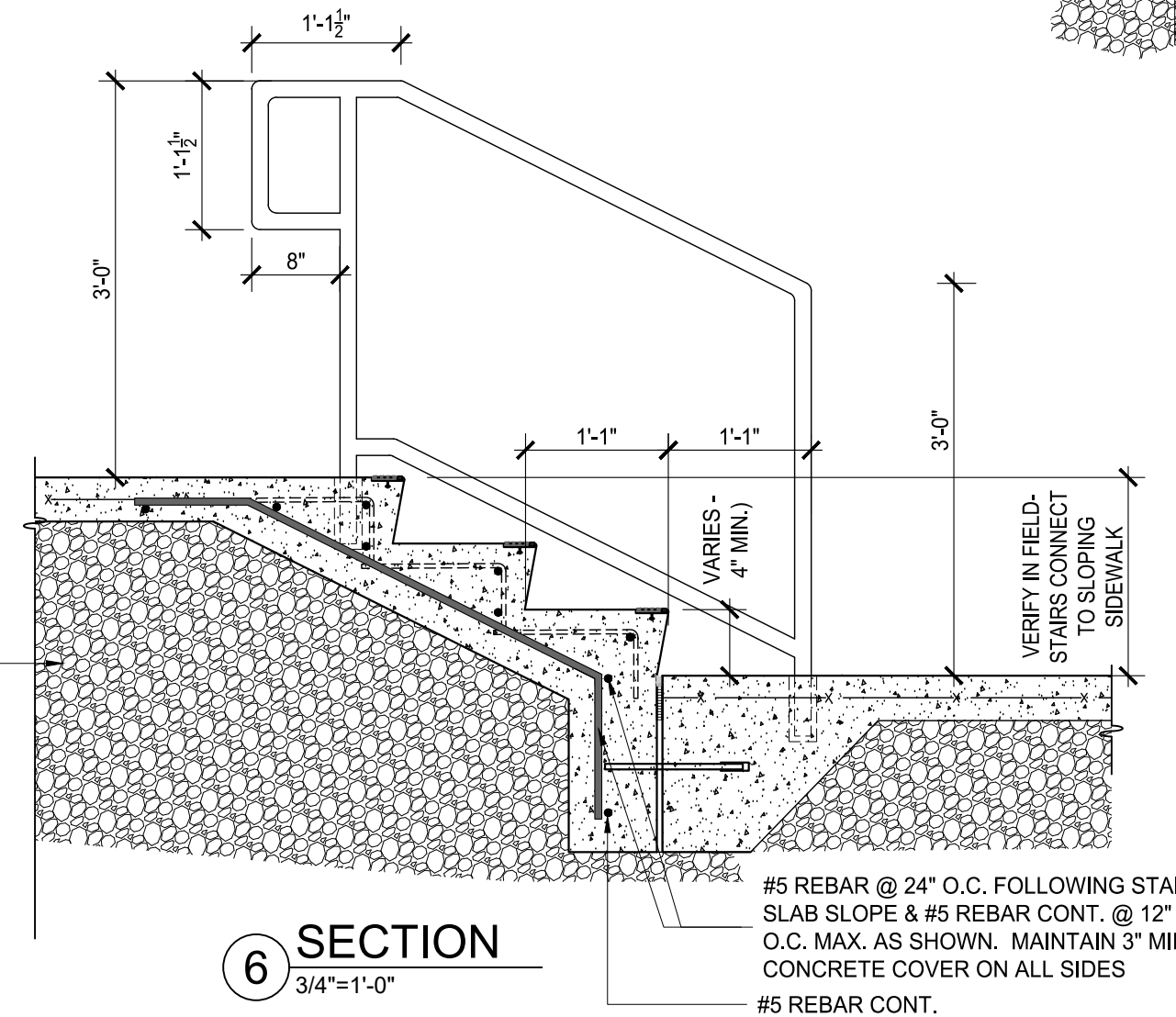
3 SECTION
3/4"=1'-0"

4 SECTION
3/4"=1'-0"



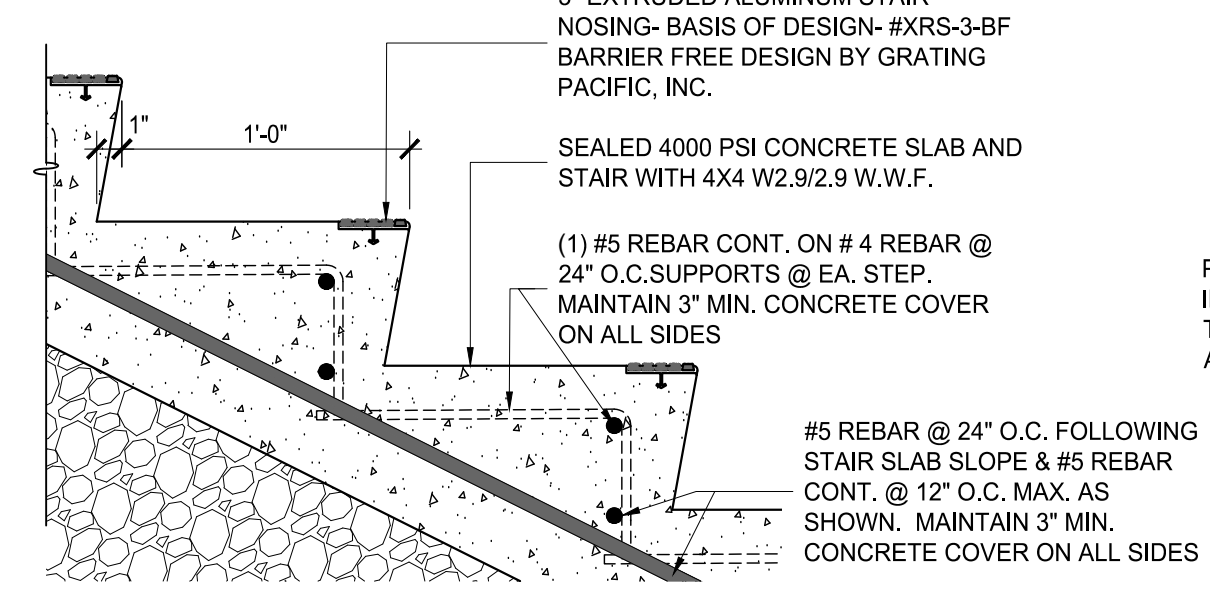
5 SECTION
3/4"=1'-0"

7 DETAIL- CROSS SLOPE @ SIDEWALKS
3/4"=1'-0"

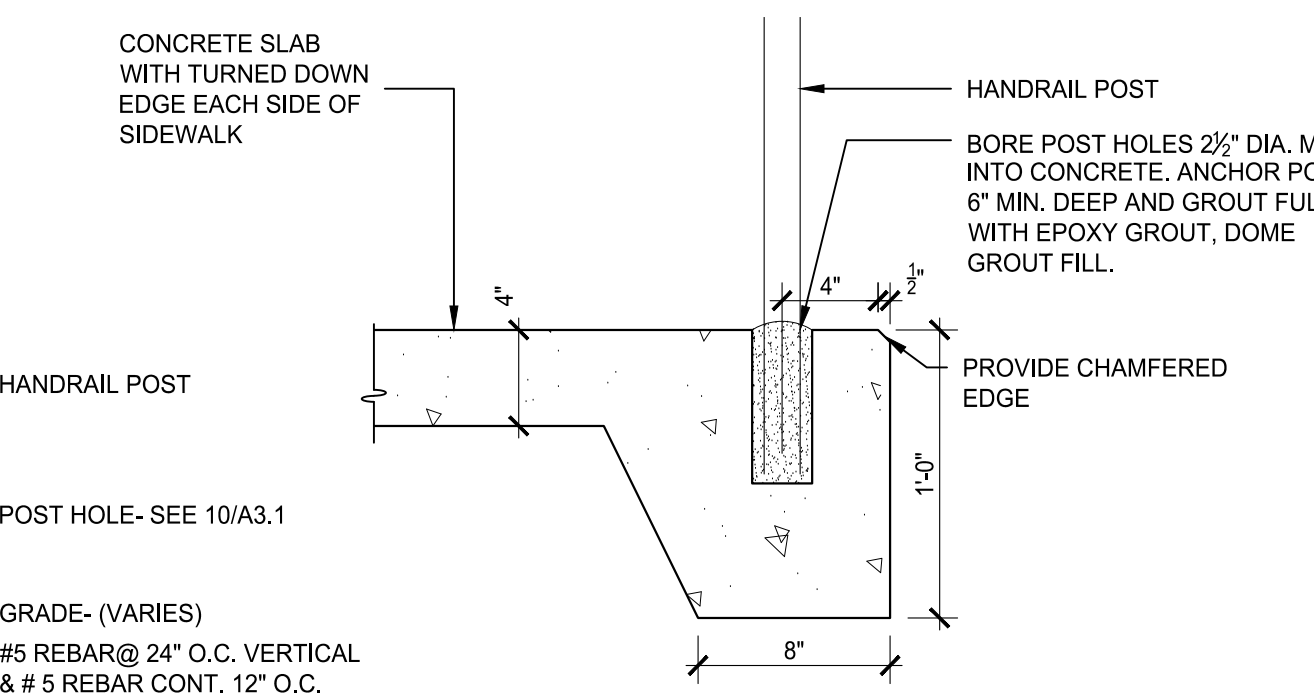


6 SECTION
3/4"=1'-0"

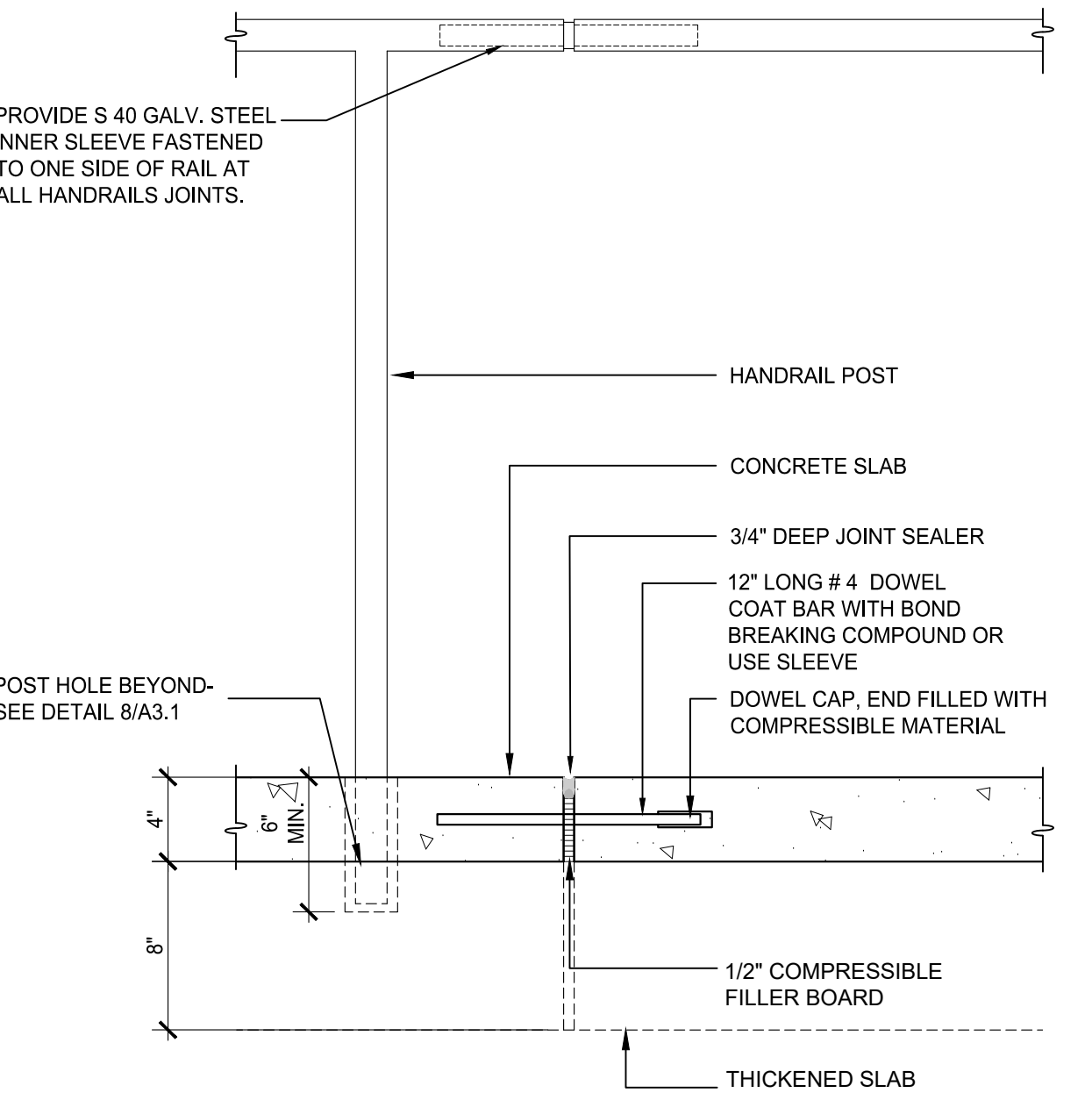
8 SECTION THRU RAMP
3/4"=1'-0"



9 DETAIL- STEP
1 1/2"=1'-0"



10 DETAIL- RAIL/ SIDEWALK
1 1/2"=1'-0"



11 DETAIL
1 1/2"=1'-0"

ALL SIDEWALKS AND RAMP:
4" THICK, 3000 PSI, CONCRETE (WITH FIBER) ON MIN.
4" THICK #57 STONE ON RESIDUAL SOIL.
TURNED DOWN SLAB AT RAMP. SEE DETAIL 8/A3.1
CONTROL JOINTS @ 10'-0" MAX. PROVIDE EXPANSION
JOINTS AT TOP AND BOTTOM OF RAMP. VERIFY
ELEVATIONS AND REVIEW W/ ARCHITECT BEFORE
INSTALL.

TYPICAL HANDRAIL CONSTRUCTION:
1 1/2" SCHEDULE 40 STEEL PIPE RAIL AND POSTS.
GALVANIZED AFTER FABRICATION. PROVIDE
INNER SLEEVE AT ALL JOINTS. SEE DETAIL
10.11/3.1.