

Enka High School- Proposed Sound Room in the Auditorium

475 Enka Lake Road, Candler, NC

PROJECT DESCRIPTION:

WORK:
WORK CONSISTS OF THE ADDITION OF A SOUND ROOM AS SHOWN ON THE ATTACHED DRAWINGS. WORK TO INCLUDE SELECTIVE DEMOLITION OF CONCRETE SLAB AND CMU WALL, AND CONSTRUCTION OF CONCRETE FLOOR SLAB INFILL, CONCRETE RAMP, METAL WALL FRAMING, STEEL HANDRAILS, GLAZING, WOOD DOORS AND HOLLOW METAL FRAMES, DOOR HARDWARE ACOUSTICAL CEILING TILE, ELECTRICAL AND MECHANICAL SYSTEM.

CONTRACTOR TO COORDINATE WITH SEATING AND CARPET INSTALLATION AND PAINTING OF THE CEILING WHICH WILL OCCUR SIMULTANEOUSLY WITH THIS PROJECT

THE PROJECT INVOLVES: GENERAL CONTRACTOR, MECHANICAL, AND ELECTRICAL WORK. THE LOCATION IS INTERNAL TO THE BUILDING AND DOES NOT INVOLVE AN ADDITION OR NEW BUILDING FOOTPRINT.

CONTRACTOR IS RESPONSIBLE FOR OBTAINING AND PAYING ALL COSTS ASSOCIATED W/ BUNCOMBE COUNTY PERMITS AND FEES ASSOCIATED WITH THIS WORK.

GENERAL NOTES

1. PRIOR TO CONSTRUCTION, CONTRACTOR SHALL FIELD VERIFY EXISTING DIMENSIONS AND NOTIFY ARCHITECT OF ANY DISCREPANCIES THAT WILL IMPACT THE DESIGN INTENT INDICATED IN THESE DOCUMENTS.
2. ALL EQUIPMENT, FIXTURES, HARDWARE AND ACCESSORIES PROVIDED ARE TO COMPLY WITH 2010 ADA STANDARDS FOR ACCESSIBLE DESIGN BY THE US DEPARTMENT OF JUSTICE AND ICC A117.1-2009 ACCESSIBLE AND USABLE BUILDINGS AND FACILITIES. ALL PRODUCTS IDENTIFIED INDICATE BASIS OF DESIGN. REFER TO SPECIFICATIONS FOR ADDITIONAL INFORMATION.
3. ALL EXISTING MATERIALS TO REMAIN ARE TO BE PROTECTED AND CLEANED. REMOVE EXISTING DEBRIS WITHOUT DAMAGING FINISHES.
4. NEATLY SEAL NEW MATERIALS TO EXISTING MATERIAL AND SURFACES.

OWNER CONTACTS:

DESIGN AND TECHNICAL CONTACT:

ARCHITECT
CAROL HENNE FAY
ASST. FACILITIES DIRECTOR, BUNCOMBE CO. SCHOOLS
PHONE: 828-255-5917
E-MAIL: CAROL.FAY@BCSEMAIL.ORG

PME ENGINEER
SUD ASSOCIATES, P.A.
CONSULTING ENGINEERS
PHONE- 828-255-4691

BIDDING & ADMINISTRATIVE CONTACT:

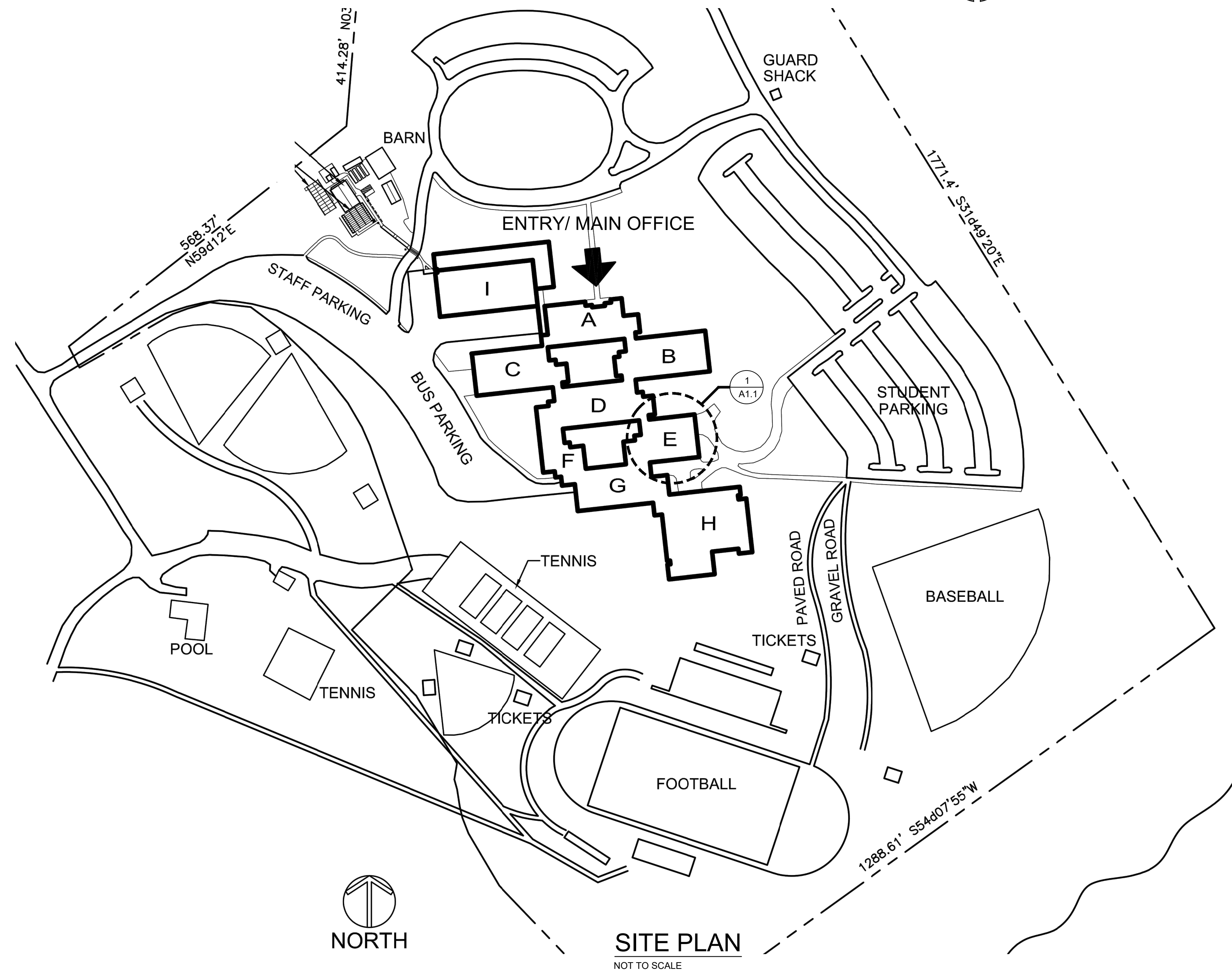
TIFFANY McCANTS
PURCHASING OFFICER
PHONE: 828-255-5891
FAX: 828-251-1730

SHEET INDEX:

COVER	
APX B	LIFE SAFETY PLAN AND BUILDING CODE SUMMARY
A1.1	PROPOSED AND DEMOLITION PLANS
A2.1	ENLARGED PLAN AND SECTIONS
A3.1	REFLECTED CEILING PLAN, FINISH & DOOR SCHEDULE, H/J/S DETAILS, MILLWORK DETAILS
M1.1	MECHANICAL PLAN, NOTES AND SCHEDULES
E0.1	ELECTRICAL DEMOLITION
E1.1	ELECTRICAL- POWER AND LIGHTING PLAN
E2.1	ELECTRICAL- LEGEND AND NOTES AND DETAILS



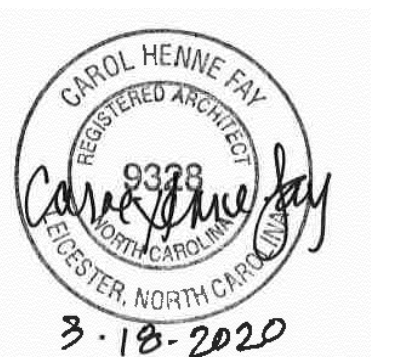
VICINITY MAP
NOT TO SCALE



SITE PLAN
NOT TO SCALE

**Buncombe County Schools
Facilities and Planning**

Timothy Fierle AIA, Director
175 Bingham Road □ Asheville, N.C. 28806-3800
Phone: (828) 255-5916 Fax: (828) 255-5923

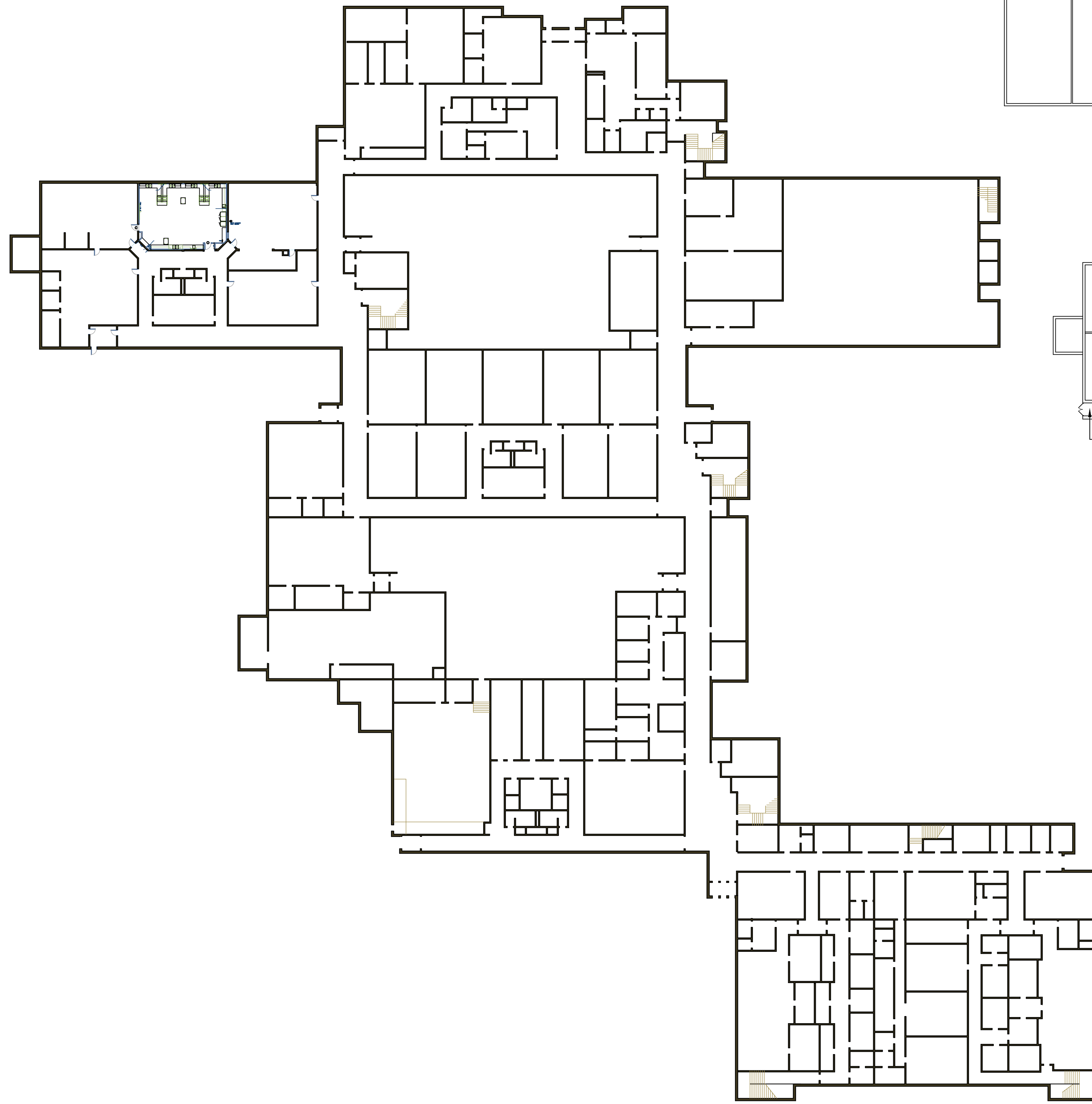


COVER

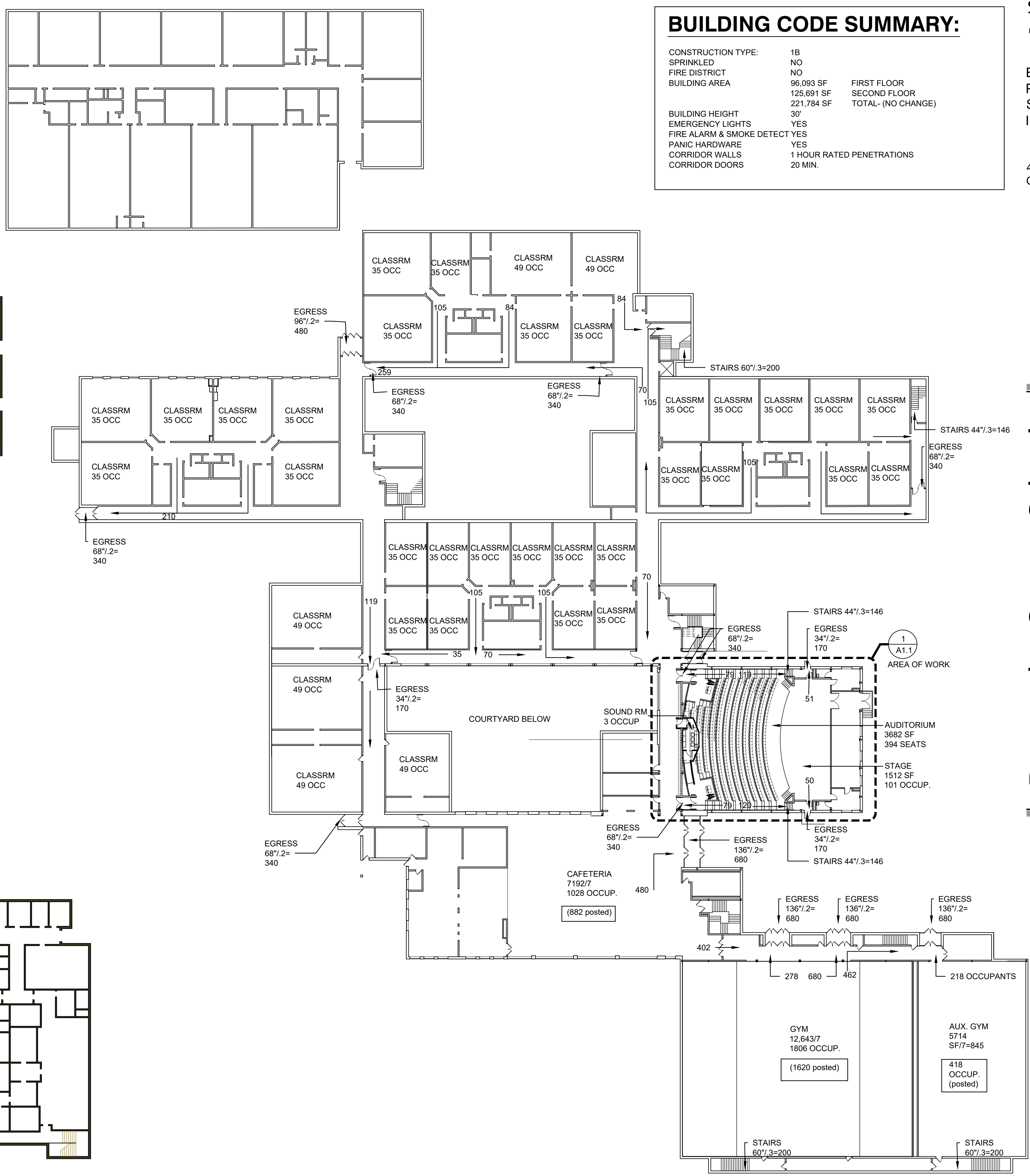
DESIGNED BY: CHF
DATE: 03.18.2020

BUILDING CODE SUMMARY:

CONSTRUCTION TYPE:	1B
SPRINKLED	NO
FIRE DISTRICT	NO
BUILDING AREA	96,093 SF FIRST FLOOR 125,691 SF SECOND FLOOR 221,784 SF TOTAL- (NO CHANGE)
BUILDING HEIGHT	30'
EMERGENCY LIGHTS	YES
FIRE ALARM & SMOKE DETECT	YES
PANIC HARDWARE	YES
CORRIDOR WALLS	1 HOUR RATED PENETRATIONS
CORRIDOR DOORS	20 MIN.



① PLAN VIEW- LOWER LEVEL
3/32"=1'-0"



① PLAN VIEW- UPPER LEVEL
3/32"=1'-0"

**Buncombe County Schools
Facilities and Planning**

Timothy Fierle AIA, Director

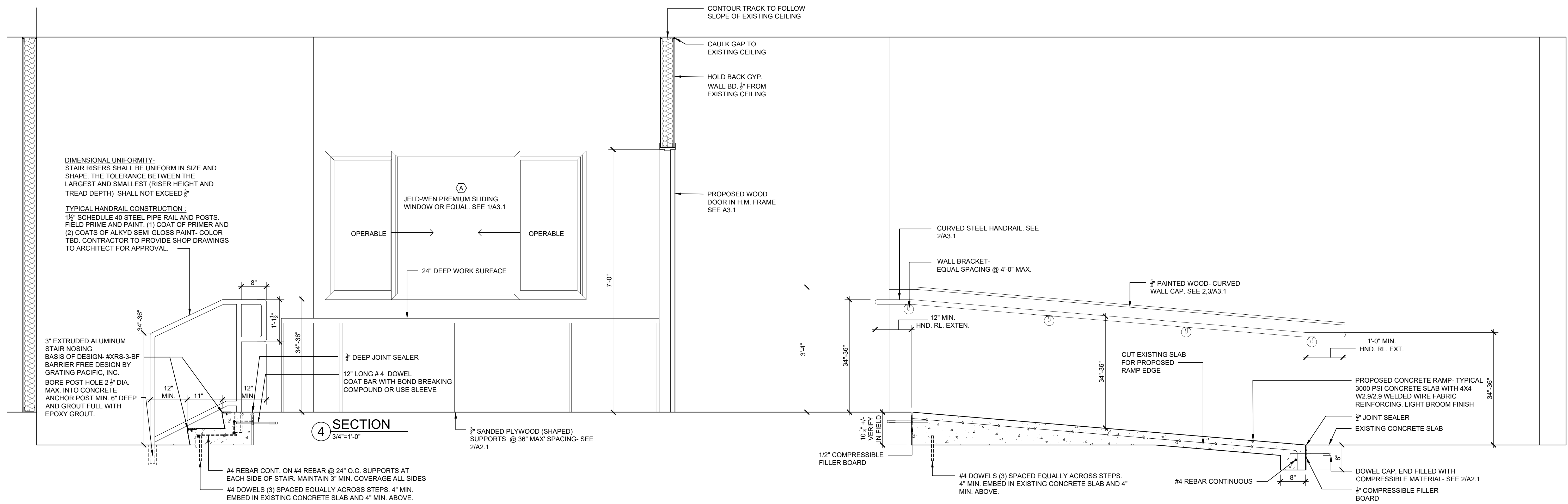
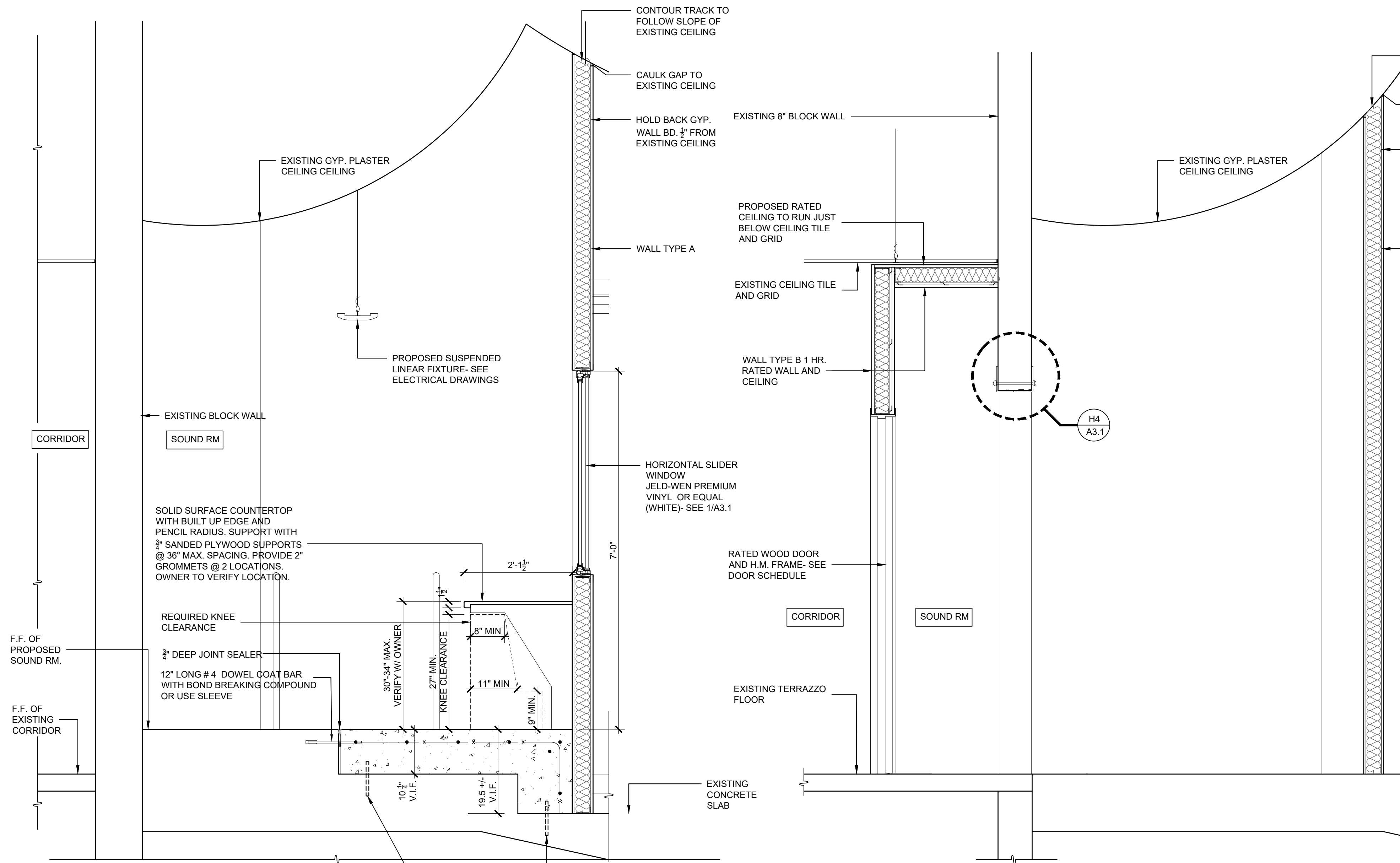
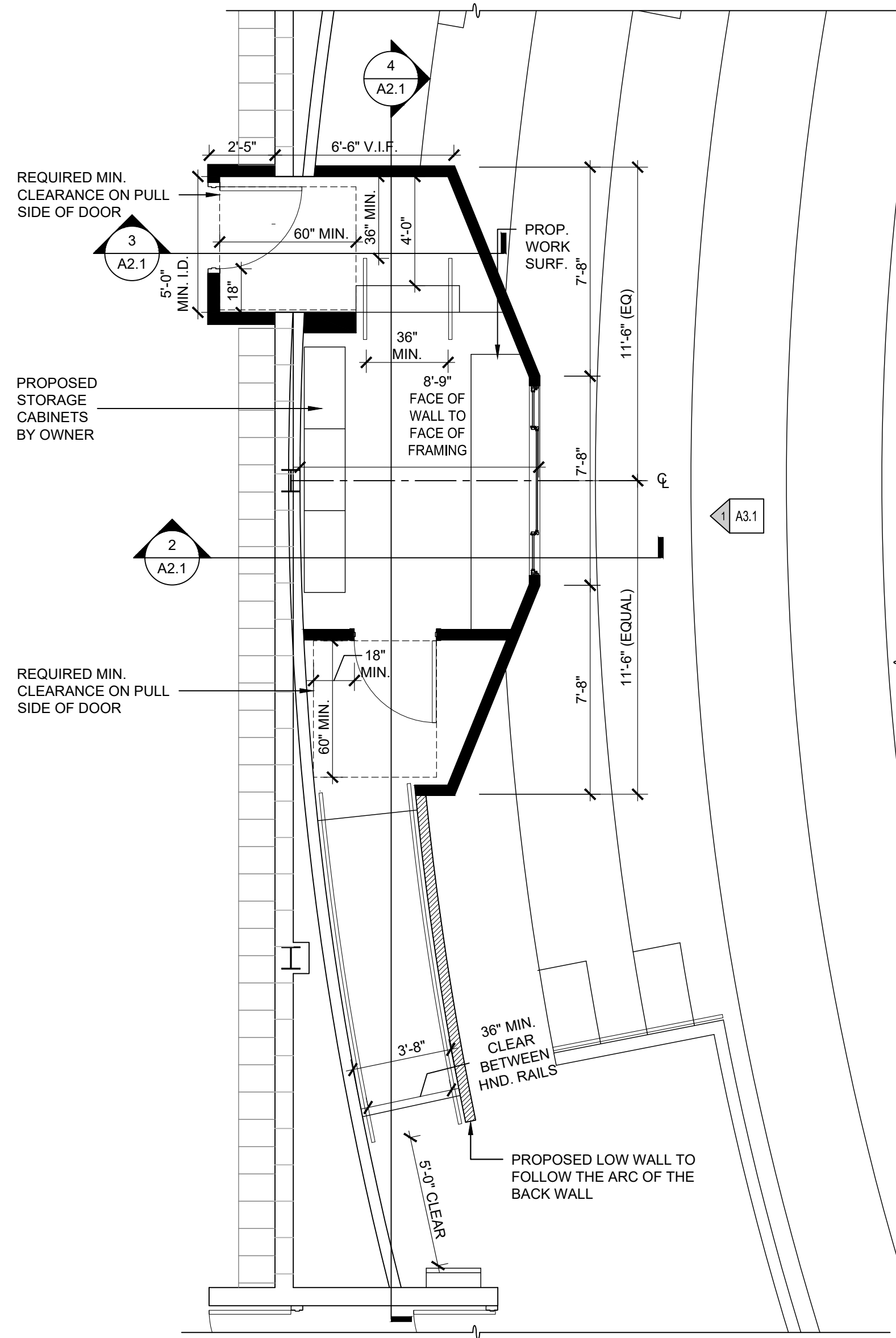
175 Bingham Road □ Asheville, N.C. 28806-3800
Phone: (828) 255-5916 Fax: (828) 255-5923



APX B



NOTE:
ALL DIMENSIONS TO FACE OF FRAMING UNLESS OTHERWISE NOTED



DIMENSIONAL UNIFORMITY:
STAIR RISERS SHALL BE UNIFORM IN SIZE AND SHAPE. THE TOLERANCE BETWEEN THE LARGEST AND SMALLEST (RISER HEIGHT AND TREAD DEPTH) SHALL NOT EXCEED 3/8"

TYPICAL HANDRAIL CONSTRUCTION:
1 1/2" SCHEDULE 40 STEEL PIPE RAIL AND POSTS. FIELD PRIME AND PAINT. (1) COAT OF PRIMER AND (2) COATS OF ALKYD SEMI GLOSS PAINT- COLOR TBD. CONTRACTOR TO PROVIDE SHOP DRAWINGS TO ARCHITECT FOR APPROVAL.

#4 REBAR CONT. ON #4 REBAR @ 24" O.C. SUPPORTS AT EACH SIDE OF STAIR. MAINTAIN 3" MIN. COVERAGE ALL SIDES

#4 DOWELS (3) SPACED EQUALLY ACROSS STEPS. 4" MIN. EMBED IN EXISTING CONCRETE SLAB AND 4" MIN. ABOVE.

PROPOSED CONCRETE RAMP- TYPICAL 3000 PSI CONCRETE SLAB WITH 4X4 W2.9/2.9 WELDED WIRE FABRIC REINFORCING. LIGHT BROOM FINISH

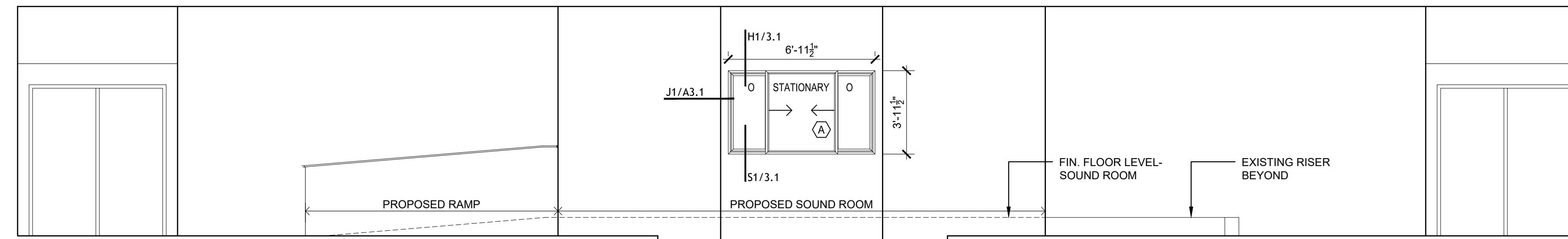
1/2" COMPRESSIBLE FILLER BOARD

DOWEL CAP. END FILLED WITH COMPRESSIBLE MATERIAL- SEE 2/A2.1

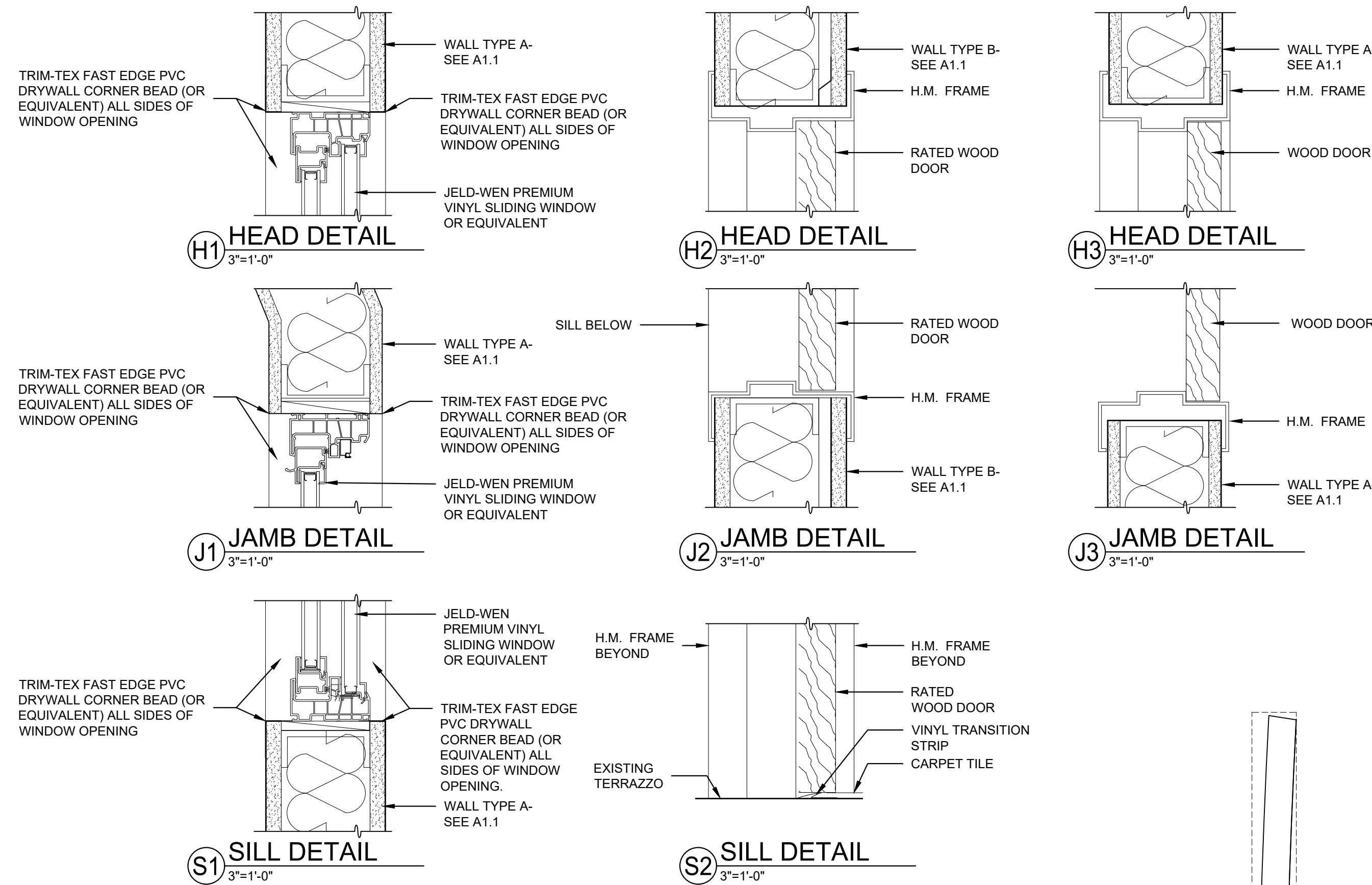
3/8" COMPRESSIBLE FILLER BOARD

FINISH SPECIFICATIONS:

- PT1 1 COAT OF PRIMER AND 2 COATS OF PAINT- SHERWIN WILLIAMS OR EQUAL PER MANUFACTURERS RECOMMENDATIONS. PAINT TO MATCH EXISTING WALLS.
- RB1 4" X 1/2" VINYL BASE
- CPT



1 ELEVATION
1/4"=1'-0"



DOOR SCHEDULE											
DOOR NO.	DOOR TYPE	WIDTH x HEIGHT	THK.	MAT'L	FRAME TYPE	FRAME HEAD	JAMB	SILL	UL RAT.	HDW	REMARKS
001	A	3'-0" X 7'-0"	1 3/4"	WOOD	H.M.	1	H-2	J-2	S-2	HW-1	20 MIN. RATED DOOR, * PARTICLE BD. CORE, MIN. STC-45
002	B	3'-0" X 7'-0"	1 3/4"	WOOD	H.M.	1	H-3	J-3		HW-2	** PARTICLE BD. CORE, MIN. STC-45 W/ VIEW WINDOW

NEW DOORS AS FOLLOWS: WOOD DOORS - FINISH TO MATCH EXISTING DOORS. FRAMES: 16 GA. RATED W/ WELDED SEAMS. PAINT TO MATCH ADJACENT FRAMES.

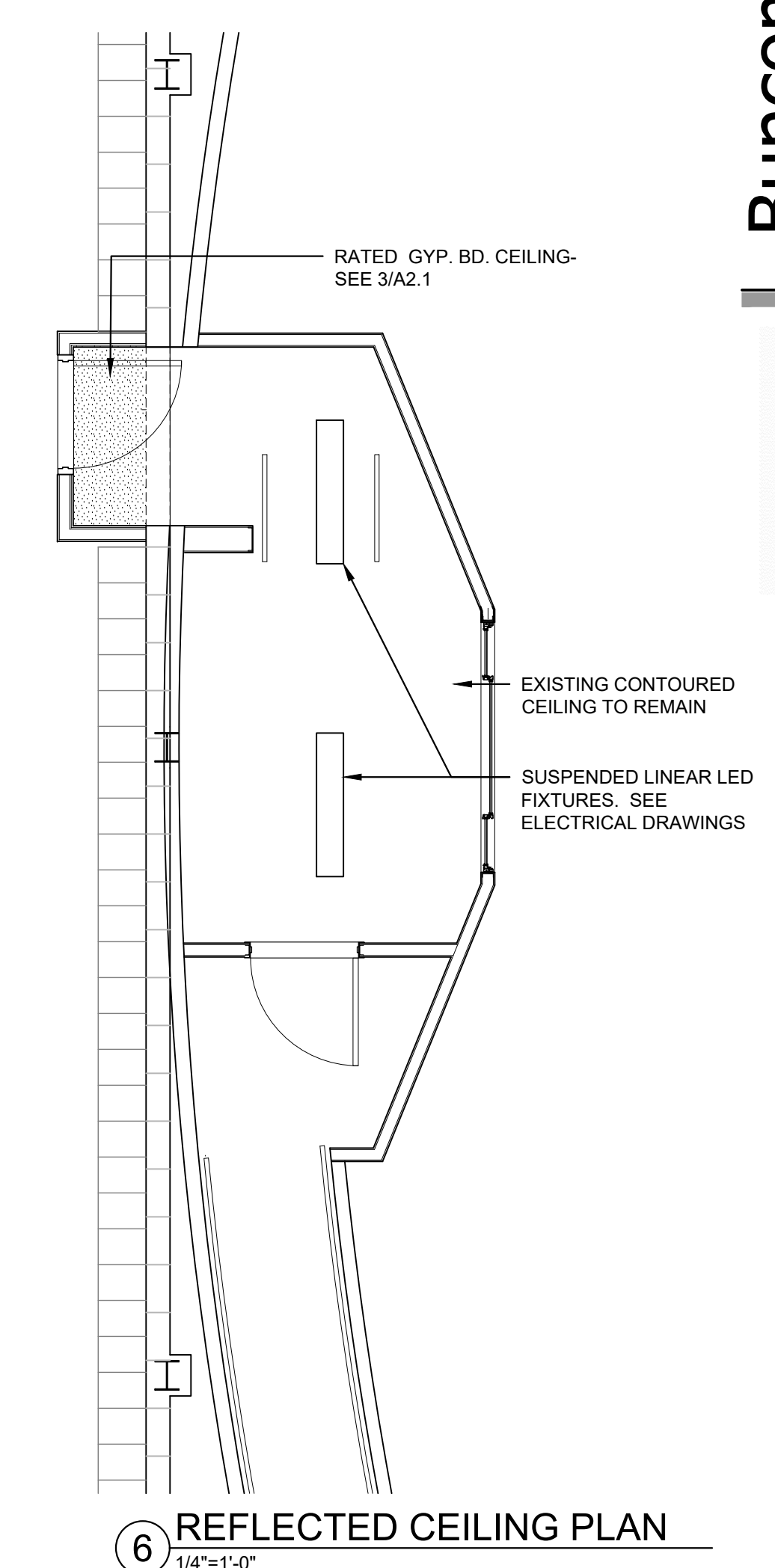
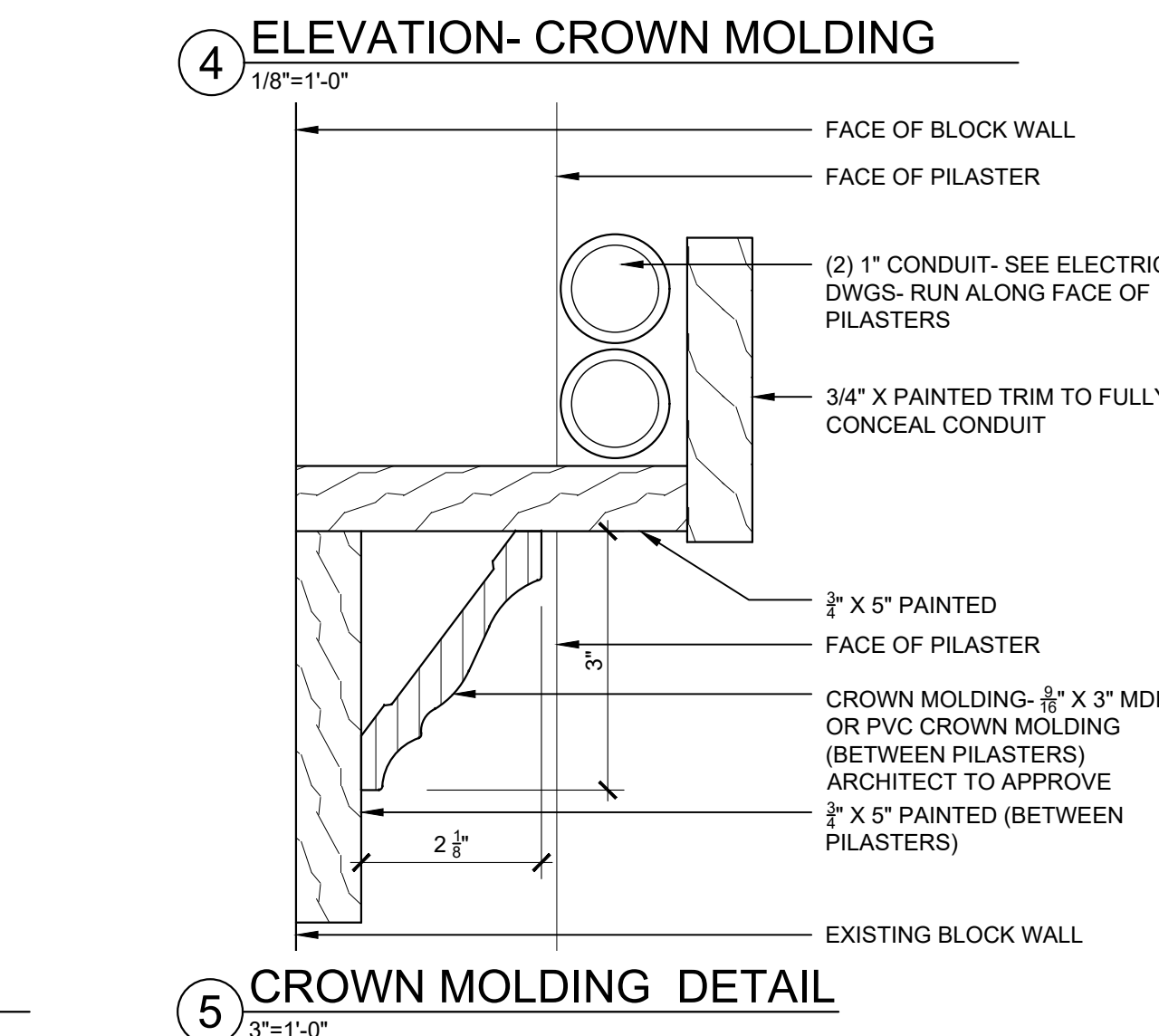
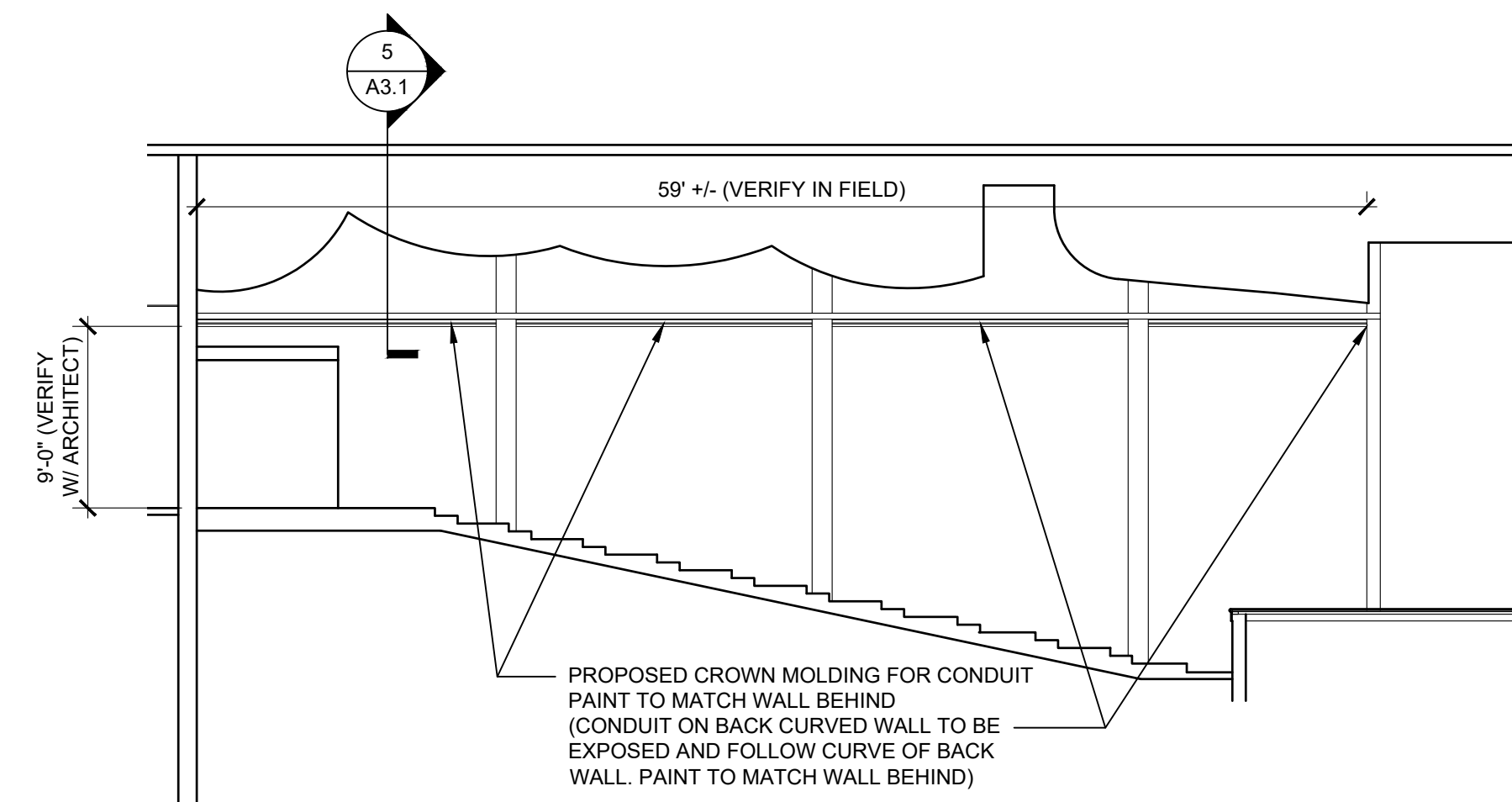
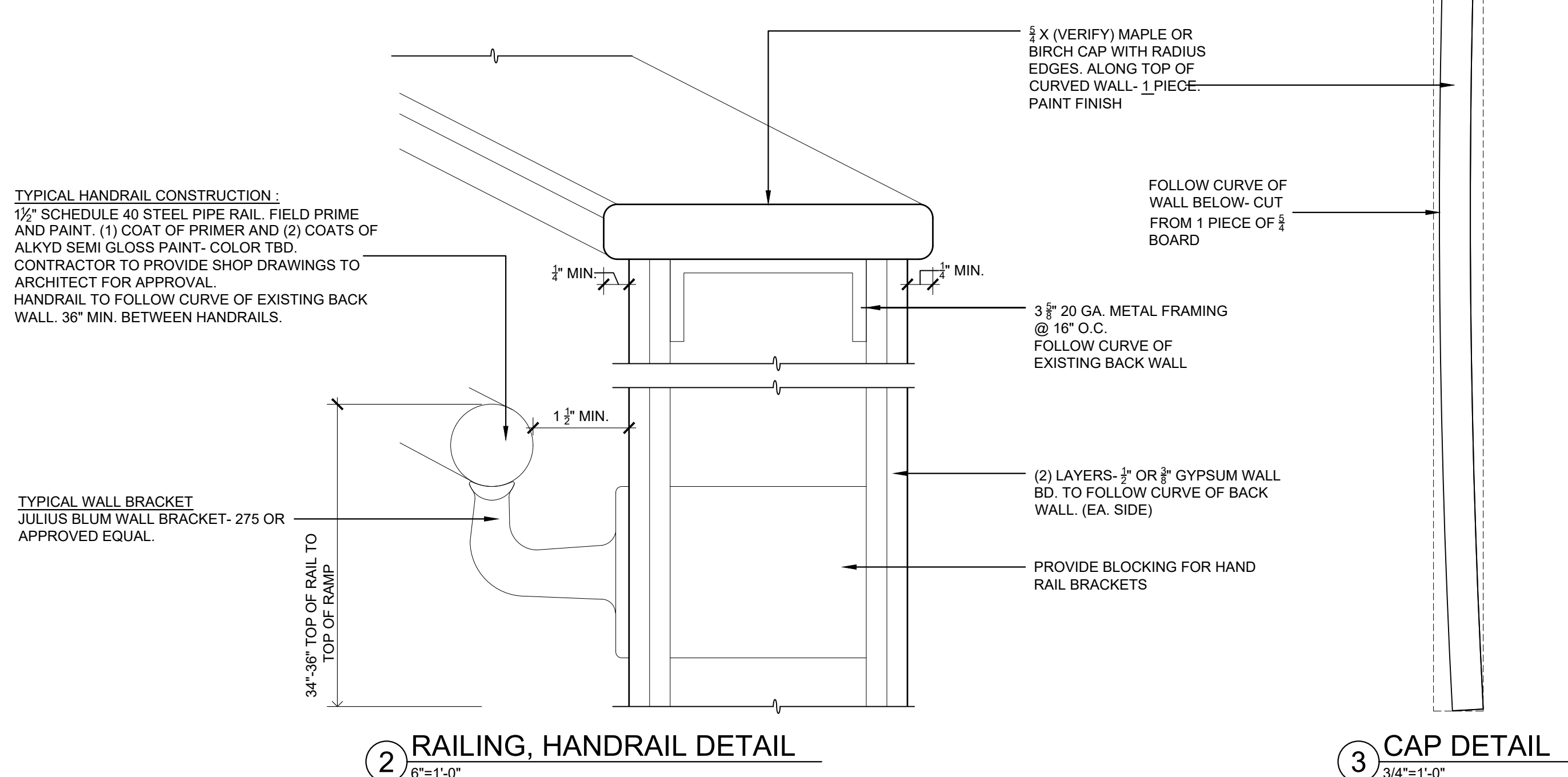
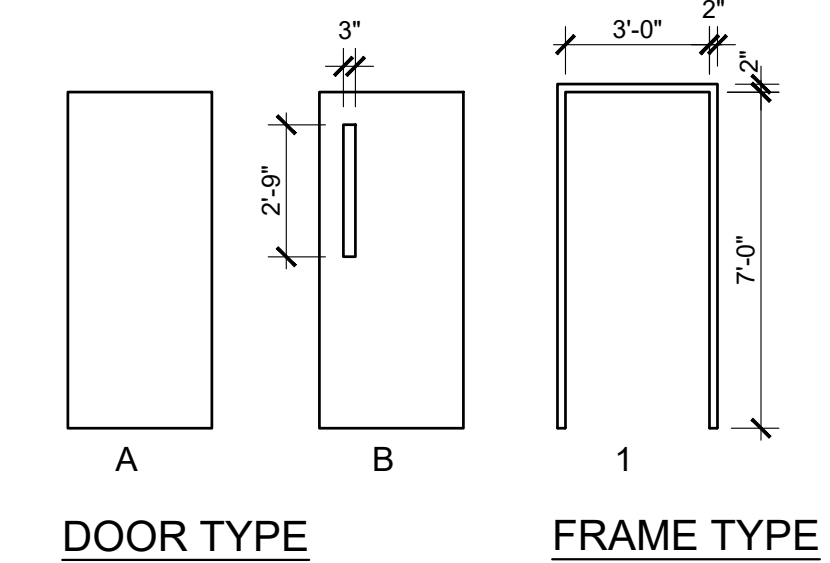
HW-1:

FOR DOORS 001 3'-0" X 7'-0" X 20 MIN.			
3	HW HINGE	5BB1HW 4.5X4.5	652 IVE
1	CLOSER	4011TBWMS	AL LC
1	CLRM LOCK	ND75PD TLR	626 SCH
1	WALL BUMPER	WS406/407CCV	US32D IVE
1	DOOR SEAL	488S-BK-1X36"X2X84"	BK ZE
1	AUTOM. DR. BTM	STC411	ALUM PEMKO

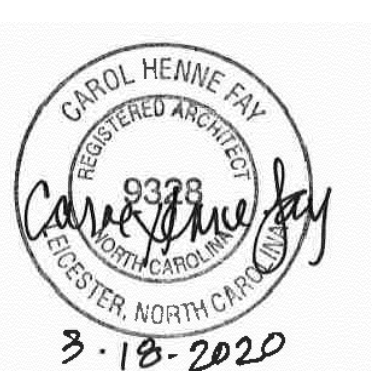
HW-2:

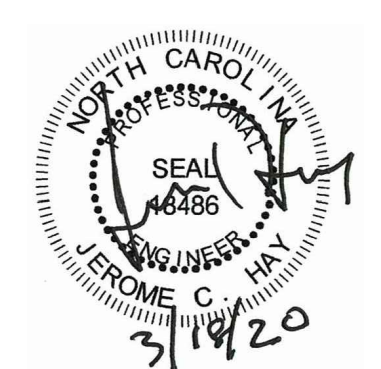
FOR DOOR 002 3'-0" X 7'-0"			
3	HW HINGE	5BB1HW 4.5X4.5	652 IVE
1	WALL BUMPER	WS406/407CCV	US32D IVE
1	CLRM LOCK	ND75PD TLR	626 SCH
1	DOOR SEAL	488S-BK-1X36"X2X84"	BK ZE
1	AUTO. DR. BTM.	STC411	ALUM PEMKO

ALL CYLINDERS TO BE "T" KEYWAY



Buncombe County Schools
Facilities and Planning
Timothy Fierle AIA, Director
175 Bingham Road □ Asheville, N.C. 28806-3800
Phone: (828) 255-5916 Fax: (828) 255-5923



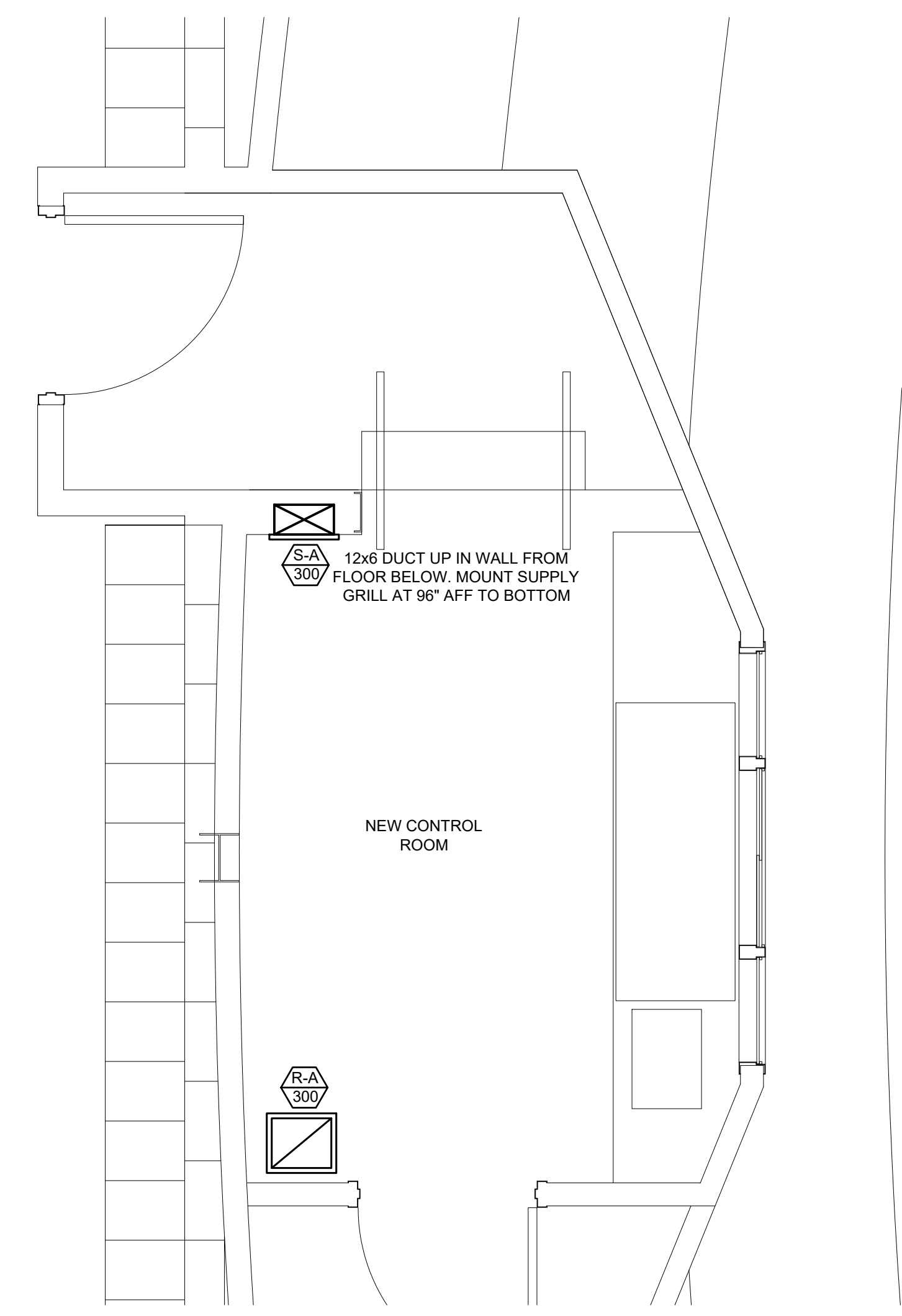


GENERAL MECHANICAL LEGEND	
SYMBOL	DESCRIPTION
—	NEW PIPING OR EQUIPMENT
---	EXISTING PIPING OR EQUIPMENT
///	DEMO PIPING OR EQUIPMENT
—HWR	HOT WATER RETURN PIPING
—HWS	HOT WATER SUPPLY PIPING
	FLEXIBLE DUCT
⊠	SUPPLY AIR DIFFUSER
⊡	RETURN AIR DIFFUSER
⊣	EXHAUST AIR DIFFUSER
⊠⊡	SUPPLY AIR DIFFUSER TAG
⊡⊣	RETURN AIR DIFFUSER TAG
⊣⊠	EXHAUST AIR DIFFUSER TAG
⊠⊡	SUPPLY DUCT UP OR DOWN
⊡⊣	RETURN DUCT UP OR DOWN
⊣⊠	EXHAUST DUCT UP OR DOWN
BD	MANUAL BALANCING DAMPER
T	THERMOSTAT
R	GAS REGULATOR
---	1 HOUR FIRE WALL
---	2 HOUR FIRE WALL
⚡	POINT OF CONNECTION - NEW TO EXISTING

MECHANICAL GENERAL NOTES:

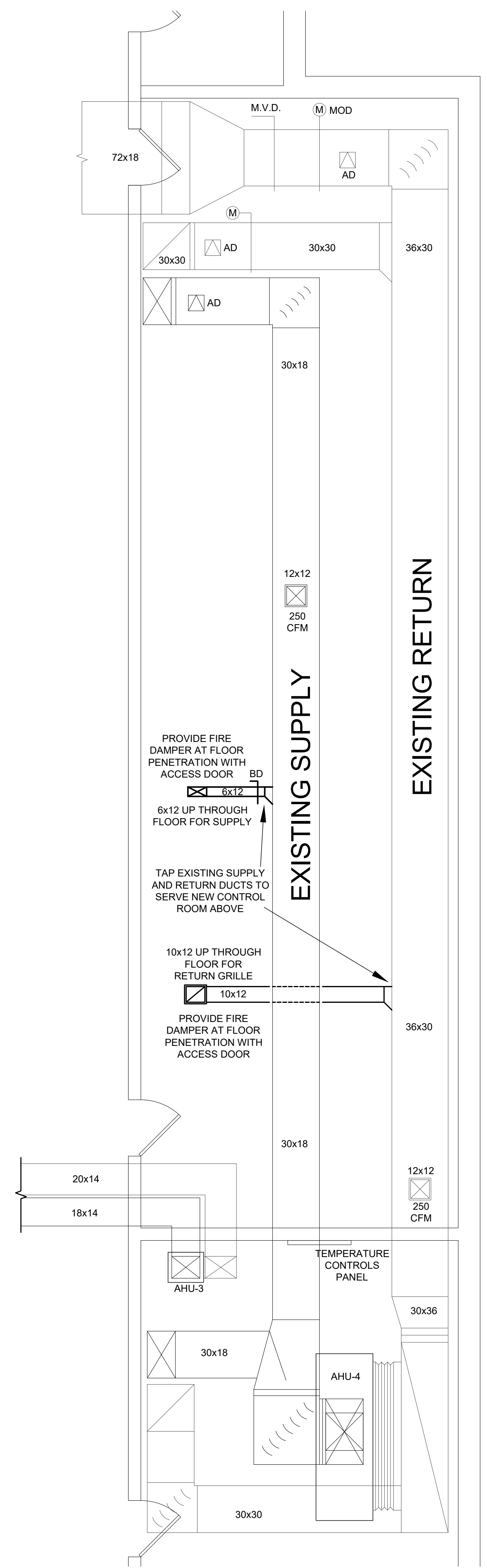
- THE BUILDING PLANS ARE BASED ON INFORMATION PROVIDED BY THE ARCHITECT. THE CONTRACTOR SHALL FIELD VERIFY ALL DIMENSIONS, QUANTITIES, AND CONDITIONS PRIOR TO WORK. OWNER WILL NOT APPROVE ANY CHANGE ORDERS RESULTING FROM CONTRACTOR'S FAILURE TO FIELD VERIFY. DRAWINGS SHALL NOT BE SCALED TO DETERMINE ACTUAL DIMENSIONS.
- THE MECHANICAL DRAWINGS ARE DIAGRAMMATIC AND INDICATE APPROXIMATE LOCATION OF EQUIPMENT, PIPING AND DUCTWORK. MINOR ADJUSTMENTS AND OFFSETS SHALL BE PROVIDED WHERE REQUIRED AT NO ADDITIONAL COST TO THE OWNER. COORDINATE CHANGES IN ROUTING OR OTHER WORK WITH THE ENGINEER PRIOR TO PROCEEDING.
- EXISTING AREAS WHETHER WITHIN OR WITHOUT THE "GENERAL LIMITS OF CONSTRUCTION", SHALL BE REPAIRED WHERE ANY DAMAGE HAS OCCURRED DUE TO CONSTRUCTION BY THE CONTRACTOR.
- ALL PENETRATIONS SHOULD BE REUSED TO EXTENT POSSIBLE. PATCH NEW AND EXISTING PENETRATIONS TO MATCH EXISTING WALL CONSTRUCTION. CONTRACTOR IS RESPONSIBLE FOR SEALING ALL PENETRATIONS THROUGH ALL WALLS TO PREVENT SOUND TRANSFER. GROUT OR GYPSUM WALL BD. "MJ" MAY BE USED FOR NON RATED WALLS. PENETRATIONS THROUGH RATED WALLS SHALL BE MADE PER THE UL DETAILS PROVIDED.
- ALL WORK SHALL BE INSTALLED IN ACCORDANCE WITH MANUFACTURER'S RECOMMENDATIONS AND THE NORTH CAROLINA STATE MECHANICAL CODE.
- UNLESS OTHERWISE INDICATED MECHANICAL CONTRACTOR IS RESPONSIBLE FOR ALL CUTTING, CORE-DRILLING AND PATCHING OF FLOORING, CEILINGS AND WALLS AS REQUIRED TO MATCH EXISTING CONDITIONS.
- MECHANICAL CONTRACTOR IS RESPONSIBLE FOR COORDINATING MECHANICAL RELATED WORK WITH OTHER TRADES. MECHANICAL CONTRACTOR IS CAUTIONED THAT IT IS TOTALLY HIS RESPONSIBILITY TO COORDINATE HANGERS AND SUPPORTS ETC. WITH OTHER TRADES.
- DUCT DIMENSIONS INDICATED ON THE PLANS ARE NET INSIDE DIMENSIONS. FIELD VERIFY ALL MEASUREMENTS AND DIMENSIONS BEFORE FABRICATING DUCTWORK.
- ALL SOLID DUCTWORK SHALL BE GALVANIZED AND SHALL BE FABRICATED IN ACCORDANCE WITH THE CURRENT SMACNA DUCT CONSTRUCTION STANDARDS. DUCT SHALL BE CONSTRUCTED FOR ANTICIPATED STATIC PRESSURES. ALL JOINTS SHALL BE SEALED WITH MASTIC. DUCT SHALL BE LINED WITH 1" INSULATION FOR SOUND ATTENUATION.
- ALL NEW METAL SUPPLY DUCTWORK AND ALL RETURN DUCTWORK SHALL INTERNALLY INSULATED WITH 1" DUCT LINING.
- FIELD VERIFY UNIT & DUCT LOCATIONS. COORDINATE DUCT SIZING AND LAYOUT WITH BUILDING STRUCTURE PRIOR TO INSTALLATION. REVISE DUCTS TO EQUIVALENT SIZES AS NEEDED.
- ALL SHUTDOWNS OF THE EXISTING UTILITIES SHALL BE SCHEDULED IN ADVANCE WITH OWNER.
- CONTRACTOR SHALL PERFORM TESTING AND BALANCING OF NEW SUPPLY AND RETURN SCHEDULED TOTALS. A CERTIFIED TEST AND BALANCE REPORT IS NOT REQUIRED.

1 NEW SOUND ROOM 2ND FLOOR AUDITORIUM
M1.1 1/2" = 1'



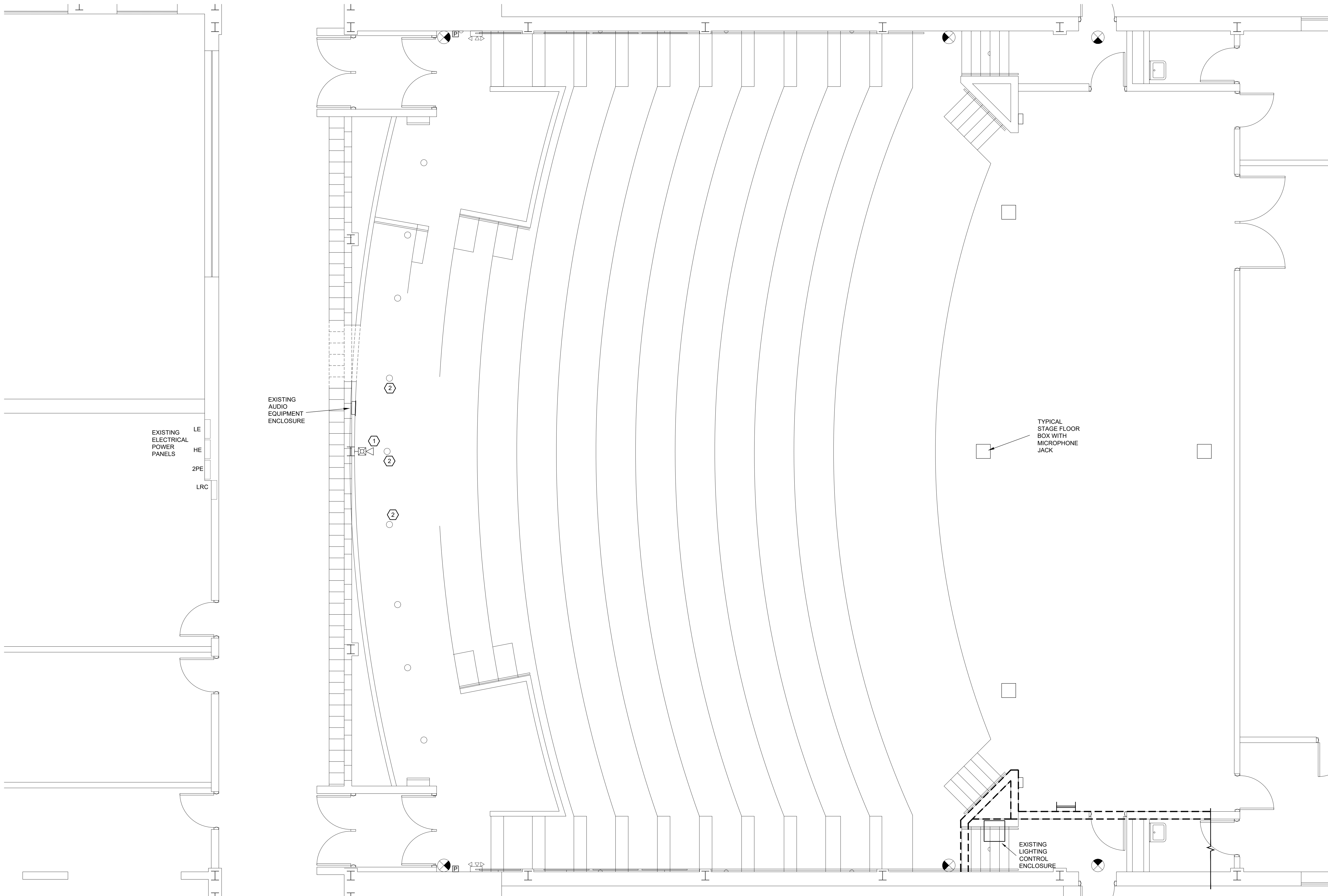
SUPPLY DIFFUSER SCHEDULE BASE BID										
MARK	MANU. *	MODEL *	TYPE	MOUNTING	CFM RANGE	FACE SIZE	NECK SIZE	MATERIAL	FINISH	NOTES
S-A	PRICE	SERIES 620	DOUBLE DEFLECTION	SIDEWALL	300	14" X 8"	12" X 6"	ALUMINUM	WHITE	-
* BASIS OF DESIGN										

RETURN DIFFUSER SCHEDULE BASE BID										
MARK	MANU. *	MODEL *	TYPE	MOUNTING	CFM RANGE	FACE SIZE	NECK SIZE	MATERIAL	FINISH	NOTES
R-A	PRICE	LBMH-CORE 15A	0° DEFLECTION	FLOOR	300	14" X 12"	12" X 10"	ALUMINUM	ANODIZED ALUMINUM	1
* BASIS OF DESIGN 1. PROVIDE A FLANGED FRAME WITH 1" FLANGE WIDTH										



1 MECHANICAL - 1ST FLOOR BUILDING E
M1.1 1/4" = 1'





KEYED NOTES

- 1 THE E.C. SHALL INCLUDE AN ALLOWANCE WITH THE FIRE ALARM CONTRACTOR CHOSEN BY BUNCOMBE COUNTY SCHOOLS. THE ALLOWANCE SHALL INCLUDE REMOVING THE EXISTING FIRE ALARM ANNUNCIATOR IN SUCH A MANNER AS TO FACILITATE RE-INSTALLING THE EXISTING DEVICE IN THE NEW CONSTRUCTION. THE E.C. SHALL STORE THE DEVICE IN A SECURE AND DRY LOCATION. COORDINATE ALL FIRE ALARM SYSTEM WORK A MINIMUM OF 48 HOURS IN ADVANCE WITH THE SCHOOL ADMINISTRATION, THE G.C., THE LOCAL RESPONDING FIRE AGENCY, THE FIRE ALARM MONITORING AGENCY, AND ALL OTHER TRADES. PROVIDE A CONTINUOUS FIRE WATCH DURING FIRE ALARM SYSTEM OUTAGES.
- 2 THE E.C. SHALL REMOVE THE EXISTING RECESSED AUDITORIUM LIGHTING FIXTURES LOCATED ABOVE THE NEW CONTROL ROOM CONSTRUCTION. PROVIDE JUNCTION BOXES, CONDUIT AND CONDUCTORS TO EXTEND EXISTING LIGHTING CIRCUITS AS NECESSARY FOR THE EXISTING SWITCHING/LIGHTING ZONES TO REMAIN IN SERVICE. COORDINATE PATCHING THE REMAINING OPENINGS WITH THE G.C.

1 ELECTRICAL - DEMOLITION
E0.1 1/4" = 1'

CONSULTANTS:

SUD ASSOCIATES, P.A.
CONSULTING ENGINEERS
LICENSE NO. C-0315
PROJECT #19242

90 SOUTHSIDE AVE., SUITE 30
ASHEVILLE, NC 28801
(828) 255-4691

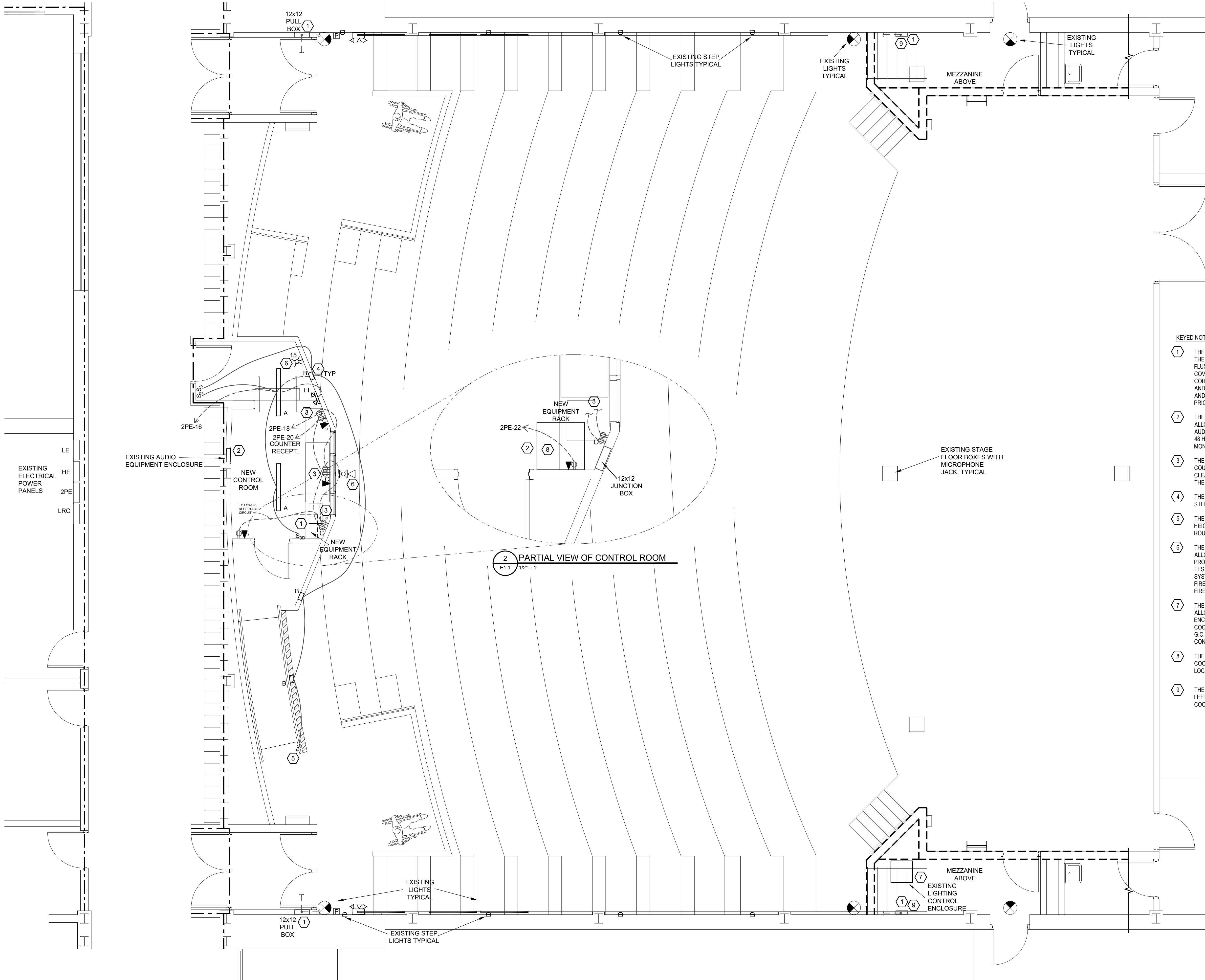
1813 CHAPEL HILL ROAD
DURHAM, NC 27707
(919) 493-5277



ELECTRICAL -
POWER & LIGHTING

E1.1

DRAWN BY: PSD
DATE: 03.18.2020



KEYED NOTES

- 1 THE E.C. SHALL PROVIDE (4) 1" EMT CONDUITS WITH PULL STRINGS FOR FUTURE LOW VOLTAGE CONTROL CABLING. ROUTE THE NEW CONDUITS ALONG THE REAR SIDE WALLS PROVIDING 12X12 PULL BOXES AT EACH CORNER. PROVIDE A NEW 12X12 FLUSH MOUNT JUNCTION BOX AT THE CONTROL ROOM EQUIPMENT RACK LOCATION WITH A MIN. 2" GROMMET IN THE COVER. PROVIDE A 12X12X4 JUNCTION BOX LOCATED WITHIN 24" OF THE EXISTING LEHIGH DIMMER EQUIPMENT RACK AND THE CORRESPONDING HOUSE LEFT MEZZANINE LOCATION AT HOUSE LEFT. PROVIDE A PRECISELY LEVEL CONDUIT INSTALLATION AND PROVIDE SMOOTHLY BENT CONDUITS WHERE THE STRUCTURE IS CURVED COORDINATE THE NEW CONDUIT, PULL BOX AND JUNCTION BOX LOCATIONS PRECISELY WITH THE ARCHITECT, THE CROWN MOLDING INSTALLER, THE G.C. AND THE OWNER PRIOR TO ROUGH-IN.
- 2 THE E.C. SHALL INCLUDE AN ALLOWANCE WITH THE FIRE ALARM CONTRACTOR CHOSEN BY BUNCOMBE COUNTY SCHOOLS. THE ALLOWANCE SHALL INCLUDE INSTALLING A UL924 RATED RELAY DEVICE AND WIRING IN SUCH A MANNER THAT THE 120 VOLT AUDIO POWER IS DISCONNECTED UPON A FIRE ALARM CONDITION. COORDINATE ALL FIRE ALARM SYSTEM WORK A MINIMUM OF 48 HOURS IN ADVANCE WITH THE SCHOOL ADMINISTRATION, THE G.C., THE LOCAL RESPONDING FIRE AGENCY, THE FIRE ALARM MONITORING AGENCY, AND ALL OTHER TRADES. PROVIDE A CONTINUOUS FIRE WATCH DURING FIRE ALARM SYSTEM OUTAGES.
- 3 THE E.C. SHALL PROVIDE DUPLEX RECEPTACLES AT 2' ABOVE THE WORK COUNTER HEIGHT, AT 18" AFF (BELOW THE WORK COUNTER); AND AT 96" AFF (FOR THE EQUIPMENT RACK). PROVIDE A HORIZONTAL MOUNTING ORIENTATION IF REQUIRED FOR CLEARANCES ABOVE THE WORK COUNTER. COORDINATE THE PRECISE RECEPTACLE LOCATIONS WITH THE ARCHITECT AND THE OWNER PRIOR TO ROUGH-IN.
- 4 THE E.C. SHALL PROVIDE STEP LIGHT FIXTURES TYPE B AT 24" AFF WHERE SHOWN. COORDINATE THE PRECISE LOCATION OF STEP LIGHTS WITH THE ARCHITECT PRIOR TO ROUGH-IN.
- 5 THE E.C. SHALL PROVIDE A THREE WAY SWITCH AT THE HANDICAP ACCESS RAMP FOR STEP LIGHTS AT OR NEAR THE HANDRAIL HEIGHT. COORDINATE THE PRECISE LOCATION OF THE SWITCH WITH THE ARCHITECT AND THE HANDRAIL INSTALLER PRIOR TO ROUGH-IN.
- 6 THE E.C. SHALL INCLUDE AN ALLOWANCE WITH THE FIRE ALARM CONTRACTOR CHOSEN BY BUNCOMBE COUNTY SCHOOLS. THE ALLOWANCE SHALL INCLUDE RELOCATING AND RE-INSTALLING THE EXISTING FIRE ALARM ANUNCIATOR WHERE SHOWN. PROVIDE AND INSTALL NEW STROBE WHERE SHOWN IN NEW CONTROL ROOM. PROVIDE FIRE ALARM TESTS AND WRITTEN TEST REPORTS PER NFPA 72 FIRE ALARM TESTING GUIDELINES AND USING NFPA TEST FORMS. COORDINATE ALL FIRE ALARM SYSTEM WORK A MINIMUM OF 48 HOURS IN ADVANCE WITH THE SCHOOL ADMINISTRATION, THE G.C., THE LOCAL RESPONDING FIRE AGENCY, THE FIRE ALARM MONITORING AGENCY, AND ALL OTHER TRADES. PROVIDE A CONTINUOUS FIRE WATCH DURING FIRE ALARM SYSTEM OUTAGES.
- 7 THE E.C. SHALL INCLUDE AN ALLOWANCE WITH THE FIRE ALARM CONTRACTOR CHOSEN BY BUNCOMBE COUNTY SCHOOLS. THE ALLOWANCE SHALL INCLUDE INSTALLING A UL924 RATED RELAY DEVICE AND WIRING IN THE LIGHTING RELAY CONTROL ENCLOSURE IN SUCH A MANNER THAT THE AUDITORIUM HOUSE LIGHTS ENERGIZE UPON A FIRE ALARM CONDITION. COORDINATE ALL FIRE ALARM SYSTEM WORK A MINIMUM OF 48 HOURS IN ADVANCE WITH THE SCHOOL ADMINISTRATION, THE G.C., THE LOCAL RESPONDING FIRE AGENCY, THE FIRE ALARM MONITORING AGENCY, AND ALL OTHER TRADES. PROVIDE A CONTINUOUS FIRE WATCH DURING FIRE ALARM SYSTEM OUTAGES.
- 8 THE E.C. SHALL PROVIDE A NEW WALL MOUNTED EQUIPMENT RACK (MIDDLE ATLANTIC DWR-10-17PD OR EQUIV.) AT 96" AFF. COORDINATE THE NEW RACK LOCATION PRECISELY WITH THE 12X12 JUNCTION BOX, POWER AND DATA OUTLETS AND LOCATIONS WITH THE ARCHITECT, THE G.C. AND THE OWNER PRIOR TO ROUGH-IN.
- 9 THE E.C. SHALL PROVIDE ONE BELDEN 5000UP-12 SPEAKER WIRE FROM THE CONTROL ROOM JUNCTION BOX TO THE HOUSE LEFT AND HOUSE RIGHT JUNCTION BOX LOCATIONS WITH A MINIMUM 20' COILED PIGTAIL ON BOTH ENDS OF EACH RUN. COORDINATE THE SPEAKER WIRE INSTALLATION WITH THE ARCHITECT, THE G.C. AND THE OWNER PRIOR TO INSTALLATION.

1 ELECTRICAL - POWER & LIGHTING
E1.1 1/4" = 1"

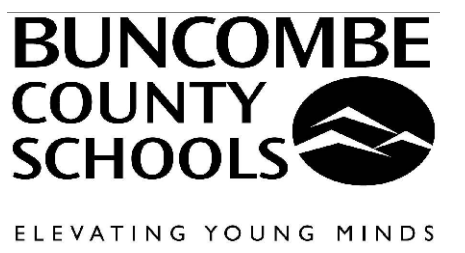
ENKA HIGH SCHOOL AUDITORIUM - LIGHT FIXTURE SCHEDULE

TYPE	DESCRIPTION	OEM & MODEL # : BASIS OF DESIGN *	MOUNTING	VOLT	LAMPS	VA/ FIXT.	NOTES
A	4" CABLE SUSPENDED DIRECT/INDIRECT LINEAR (55% DOWNLIGHT), BLACK HOUSING, 3400 LUMENS, 0-10VOLT DIMMING, 3500° K, 24" CABLE LENGTH 0- 90° SWIVEL CEILING MOUNT	LEDALITE 7806LBEQD047DEB.A3-24	CEILING MT. W/ OCTAGON BOX	120	28WLED	28.4	
B	RECESSED WALL LED STEP LIGHT, SHIELDED, 241 LUMENS, 3500° K,	BEGA #22372+K35	WALL MOUNT 24" AFF	120	11WLED	11	
EL	EMERGENCY EGRESS BATTERY LIGHT- TWO HEADS, 565 LUMENS, BLACK, STEEL HOUSING, LEAD-CALCIUM BATTERY, 12VOLTS, 36 WATTS	LIGHTALARMS #2M12G1SP/L6B-FM-ID	WALL MOUNT 9" AFF	120	6WLED	36	

* BASIS OF DESIGN, OTHER EQUIVALENT FIXTURES MAY BE SUBMITTED AND ARE SUBJECT TO SUBMITTALS REVIEW.

X: FINISH/COLOR BY ARCHITECT
XX: MOUNTING & ACCESSORIES BY EC

GENERAL ELECTRICAL LEGEND	
SYMBOL	DESCRIPTION
	NEW EQUIPMENT
	EXISTING EQUIPMENT
	1 HOUR FIRE RATED WALL
	2 HOUR FIRE RATED WALL
	TYPICAL LIGHT FIXTURES LETTER INDICATES TYPE
	TYPICAL EXIT SIGN - NUMBER OF FACES AND DIRECTIONAL ARROWS INDICATED, LETTER INDICATES TYPE
	EMERGENCY LIGHTING UNIT
	ELECTRICAL POWER SUPPLY CONNECTION TO EQUIPMENT - EQUIPMENT TAG OR DESIGNATION INDICATED. COORDINATE LOCATION AND CONNECTION DETAILS WITH EQUIPMENT PROVIDER.
	DUPLEX RECEPTACLE, NEMA CONFIGURATION 5-20R
	ABOVE COUNTER DUPLEX RECEPTACLE, MOUNT CENTER AT 44" AFF
	20A, 120/277VAC SINGLE POLE SNAP SWITCH
	20A, 120/277VAC THREE WAY SNAP SWITCH
	DIMMER LIGHT SWITCH
	CONDUITS WITH PULL STRINGS WHERE SHOWN
	SWITCHED CIRCUIT
	UNSWITCHED CIRCUIT
	HOMERUN CIRCUIT TO PANEL - CIRCUIT INDICATED



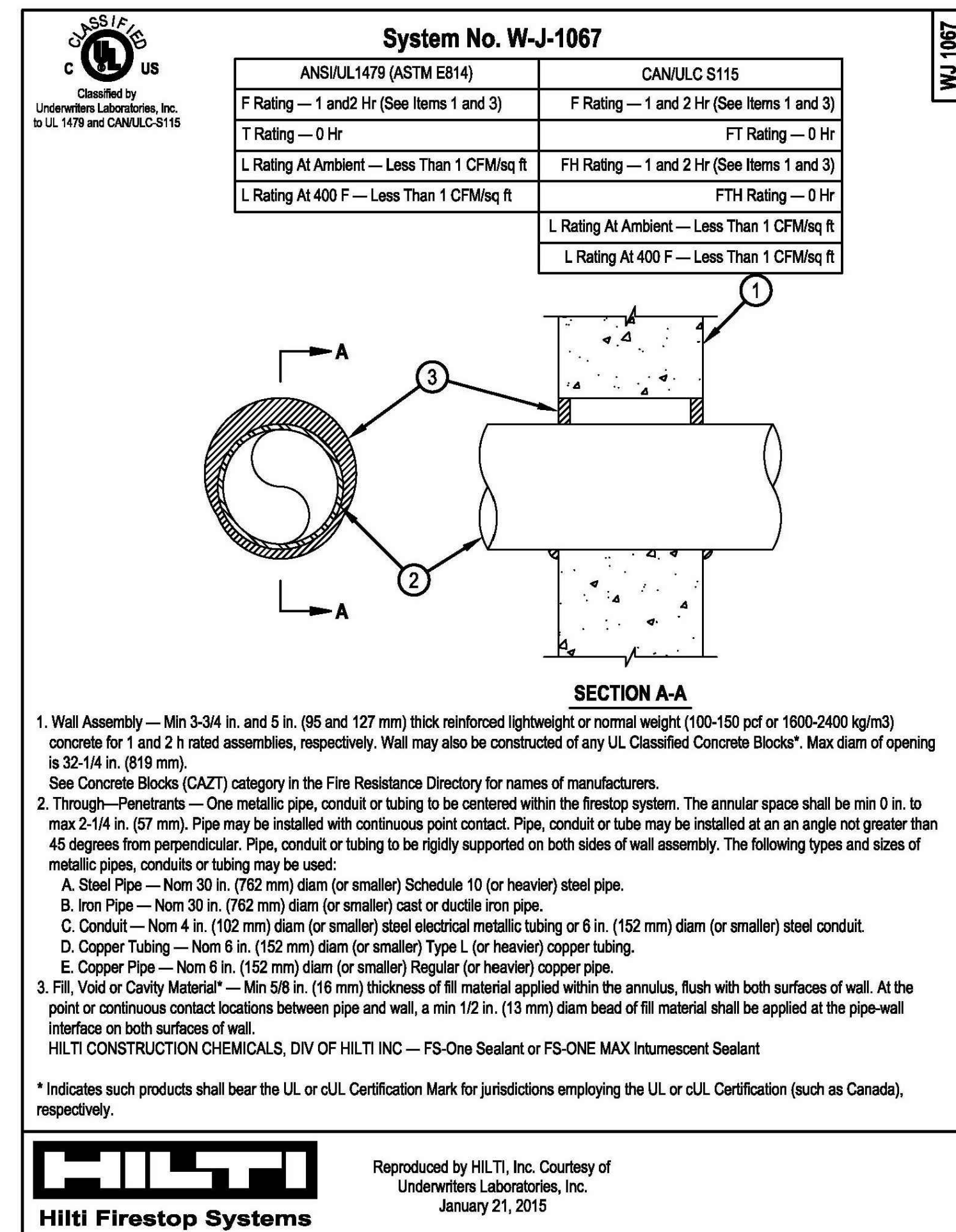
ENKA HIGH SCHOOL
PROPOSED
SOUND ROOM
IN THE AUDITORIUM

475 ENKA LAKE ROAD
CANDLER, NC

PH. A	PH. B	PH. C	CKT. TYPE	CIRCUIT DESIGNATION/LOCATION	COND. SIZE	GND. AWG	WIRE AWG	BRKR. SIZE	CKT. NO.	EXISTING PANEL 2PE	CKT. NO.	BRKR. SIZE	WIRE AWG	GND. AWG	COND. SIZE	CKT. TYPE	CIRCUIT DESIGNATION/LOCATION	PH. A	PH. B	PH. C
1.08			REC	RECEPTS RMS201&202					20		2	20	-	-	REC	RECEPTS. RMS 105 & 106	0.90			
	0.72		REC	RECEPTS RMS203&205					20		4	20	-	-	REC	RECEPTS. RMS 107&108		0.90		
		0.95	REC	MEZZANINE LTS&RECEPTS					20		6	20	-	-	REC	RECEPTS. RM 109			0.36	
0.72			REC	RECEPTS RM 204					20		8	20	-	-	REC	RECEPTS. RM 103		0.72		
	0.54		REC	RECEPTS AUDITORM 207					20		10	20	-	-	REC	RECEPTS. RM 102			0.54	
		0.54	REC	RECEPTS AUDITORM 207					20		12	20	-	-	HVAC	EXHAUST FAN 43			0.70	
0.50			MISC	DIMMER CONTROLS					20		14	20	-	-	HVAC	EXHAUST FAN 44	0.70			
	0.90		REC	RECEPTS AUDITORM 207					20		16	20	12	12	1/2	LTS	LIGHTS-CONTROL RM.		0.20	
		0.90	REC	RECEPTS AUDITORM 207					20		18	20	12	12	1/2	REC	RECEPTS-CONTROL RM.			0.54
0.54			REC	RECEPTS RM 211					20		20	20	12	12	1/2	REC	RECEPTS-COUNTER HT.	0.54		
	0.72		REC	RECEPTS RM 211					20		22	20	12	12	1/2	REC	RECEPTS-EQUIP. RACK		0.36	
		0.90	REC	RECEPTS RM 211					20		24	20	-	-	MISC	WATER HEATER			1.50	
0.72			REC	RECEPTS RM 213					20		26	20	-	-	MISC	WATER HEATER	1.50			
	0.54		REC	RECEPTS RM 213					20		28	20	-	-	REC	TROUGH T5			1.00	
		0.36	REC	RECEPTS RM 213					20		30	20	-	-	HVAC	1.5 KW HEATER			1.50	
0.10			LTS	LIGHTING CONTROL LRC					20		32	20	-	-	HVAC	1.5 KW HEATER	1.50			
	1.10		LTS	STEP LTS. AUDITORIUM					20		34	20	-	-	REC	TROUGH T3 MOVIE SCRIN			1.00	
		2.00	MISC	DISCONNECT BEHIND GUIDANCE OFFICE					30		36	20	-	-	REC	FOLLOW SPOT AUDITORM			0.18	
	0.20		MISC	EXISTING AUDIO EQUIP.					20		38	20	-	-	REC	FOLLOW SPOT AUDITORM			0.00	
		0.20	REC	MEZZANINE LTS&RECEPTS					20		40	30	-	-	HVAC	HEAT PUMP #3			0.00	
											42	30	-	-	HVAC	HEAT PUMP #3			0.00	
GROSS PHASE TOTALS																		11.70	8.72	10.83
PHASE VOLTAGE (=120 OR 277)																		120	120	120
GROSS PHASE CONNECTED AMPERAGE																		97.5	72.7	88.6
GROSS CONNECTED TOTAL LOAD																		31.1 KVA		

SPECIAL FEATURES/NOTES: **BOLD FONT IS INTENDED TO DESIGNATE NEW WORK**

EXISTING PANEL 2PE		CONNECTED KVA	DEMAND %	DEMAND KVA	MFG:	EXISTING SQ D
LTS	LIGHTS	1.4	X 125	%	1.8	TYPE: BOLT-IN BREAKERS
HVAC	HVAC	4.4	X 100	%	4.4	MOUNTING: FLUSH
A/C	HVAC (A/C)	0.0	X 0	%	0.0	VOLTAGE: 208/120
HEAT	HVAC (HEAT)	0.0	X 0	%	0.0	PHASE: 3
MTRS	LARGE MOTORS	0.0	X 0	%	0.0	BUSSES/NEUTRAL: 225/225
VENT	VENTILATION	0.0	X 0	%	0.0	WIRE: 4
KITC	KITCHEN EQUIPMENT	0.0	X 100	%	0.0	M.L.O. RATING: 225
REC	RECEPTACLES	17.6	X 78	%	13.8	FEED: BOTTOM
MISC	MISCELLANEOUS	7.7	X 100	%	7.7	AIC RATING: 22
FUT	FUTURE CAPACITY	0.0	X 0	%	0.0	COPPER BUSSES: YES
TOTAL LOADS		31.1				FEEDERS: EXISTING
			TOTAL DEMAND	27.6		



ABBREVIATIONS	
A	AMP
AFF	ABOVE FINISHED FLOOR
AFG	ABOVE FINISHED GRADE
AL	ALUMINUM
BFG	BELOW FINISHED GRADE
C	CONDUIT (AND DEVICE COUNTER HEIGHT)
CU	COPPER OR CONDENSING UNIT
EC	ELECTRICAL CONTRACTOR
EF	EXHAUST FAN
ER	REMOE EMERGENCY LIGHT
EW H	ELECTRIC WALL HEATER
EX	EXIT SIGN
FMC	FLEXIBLE METAL CONDUIT
G	GROUND
GC	GENERAL CONTRACTOR
GFI	GROUND FAULT INTERRUPTER
MC	MECHANICAL CONTRACTOR
MCA	MINIMUM CIRCUIT AMPACITY
MCB	MAIN CIRCUIT BREAKER
MDS	MAIN DISCONNECT SWITCH
MDP	MAIN DISTRIBUTION PANEL
N	NEUTRAL
NIC	NOT IN CONTRACT
OEM	ORIGINAL EQUIPMENT MANU.
PC	PLUMBING CONTRACTOR
PE	PHOTOCELL
PVC	POLYVINYL CHLORIDE PIPE
PNL	PANELBOARD
RSC	RIGID STEEL CONDUIT
RTU	ROOF TOP UNIT
SA	SURGE ARRESTER
UON	UNLESS OTHERWISE NOTED
VAC	VOLTAGE AC
W	WET LOCATION RATED
WIR	WIRE (SIZE/RATING)

Buncombe County Schools
Facilities and Planning
Timothy Fierle AIA, Director
175 Bingham Road □ Asheville, N.C. 28806-3800
Phone: (828) 255-5916 Fax: (828) 255-5923

CONSULTANTS:
SUD ASSOCIATES, P.A.
CONSULTING ENGINEERS
LICENSE NO. C-0315
PROJECT #19242

90 SOUTHSIDE AVE. SUITE 30
ASHEVILLE, NC 28801
(828) 255-4691

1813 CHAPEL HILL ROAD
DURHAM, NC 27707
(919) 493-5277



ELECTRICAL -
GENERAL

E2.1
DRAWN BY: PSD
DATE: 03.18.2020

SCOPE OF WORK

PROVIDE TEMPORARY CONSTRUCTION PHASE POWER AND LIGHTING FOR ALL TRADES AS NEEDED.

PROVIDE SUBMITTALS ON ALL POWER, LIGHTING, AND CONTROLS EQUIPMENT.

PROVIDE ALL ELECTRICAL SHOWN ON DRAWINGS AND SPECIFICATIONS AND AS NEEDED TO PROVIDE A COMPLETELY FUNCTIONAL INSTALLATION AND IN COMPLIANCE WITH NC ELECTRICAL CODE NEC 2017 EDITION WITH NC AMENDMENTS

PROVIDE ALL LOW VOLTAGE AND DATA WIRING FOR SYSTEMS FURNISHED BY OWNER.

PROVIDE FIELD COORDINATION WITH OTHER TRADES AND PROVIDE RED-LINE MARKED UP DRAWINGS TO OWNER OF ALL FIELD CHANGES.

TEST ALL MOTORS FOR CORRECT ROTATION. TEST ALL LIGHTING, SWITCHING, AND OCCUPANCY SENSORS FOR PROPER FUNCTION.

TEST AND CERTIFY ALL EMERGENCY LIGHTING.

PROVIDE ALL REQUIRED ELECTRICALLY RELATED PERMITS AND INSPECTIONS.

PROVIDE A ONE YEAR WARRANTY ON ALL PARTS AND LABOR FROM DATE OF PROJECT ACCEPTANCE

GENERAL NOTES (ALL ELECTRICAL SHEETS)

- THIS DRAWING IS DIAGRAMMATIC AND INDICATES THE APPROXIMATE LOCATION OF DEVICES AND EQUIPMENT. THE CONTRACTOR SHALL FIELD VERIFY ALL EXISTING CONDITIONS ON SITE. MINOR ADJUSTMENTS AND OFFSETS SHALL BE PROVIDED WHERE REQUIRED AT NO ADDITIONAL COST TO THE OWNER.
- PROVIDE ALL WORK IN COMPLIANCE WITH NC ELECTRICAL CODE AND IN AN INDUSTRY STANDARD WORKMANLIKE MANNER.
- NMC (ROMEX AND SE CABLE FOR FEEDERS) IS NOT ACCEPTABLE. MC CABLE IS ACCEPTABLE WHEN FISHED INSIDE EXISTING WALLS AND FOR WHIPS. EMT CONDUIT WITH COMPRESSION TYPE FITTINGS AND COPPER CONDUCTORS SHALL BE INSTALLED IN ALL OTHER LOCATIONS. MINIMUM CONDUIT SIZE IS 3/4" TRADE SIZE.
- RACEWAYS SHALL NOT BE RUN ON THE EXTERIOR OF BUILDING OR EXPOSED IN FINISHED USER/PUBLIC AREAS.
- ALL WALLS AND PENETRATIONS SHALL BE REPAIRED AND SEALED, SEE ARCHITECTURAL FOR WALL CONSTRUCTION.
- ALL WIRE SIZES SHOWN ARE FOR COPPER, UNLESS OTHERWISE NOTED. WIRES #10 OR LESS SHALL BE SOLID.
- RECEPTACLE AND SWITCH COVER PLATES SHALL BE BRUSHED STAINLESS STEEL, DEVICE COLOR SHALL BE GRAY.
- ALL SPARE BREAKERS SHALL BE TURNED OFF AND LABELED "SPARE" ON DIRECTORY CARD.
- PROVIDE ALL CONDUIT AND WIRE TERMINATIONS TO EQUIPMENT.
- GENERALLY FOCUS EMERGENCY LIGHT HEADS AT 45° DOWN ANGLE AND +/- 15°-45° HORIZONTALLY TO COVER EGRESS PATCH. DO FINAL ADJUSTMENT OF HEADS WITH ENGINEER.
- PRIOR TO LOCATING ANY DEVICES AT CASEWORK, COUNTERTOPS, ETC REFER TO FINAL ARCHITECTURAL CASEWORK DRAWINGS AND SHOP DRAWINGS TO VERIFY MOUNTING HEIGHTS AND LOCATIONS. COORDINATE ANY MOUNTING LOCATIONS PRIOR TO ROUGH IN.
- THE ENGINEER HAS MADE EVERY EFFORT TO PROVIDE A COMPLETE DESIGN, COMPLIANT WITH ALL CODES. THE ELECTRICAL CONTRACTOR SHALL MAKE ANY REQUIRED MINOR FIELD ADJUSTMENTS TO FULLY COMPLY WITH ALL LOCAL AND STATE CODES AND THE ORIGINAL DESIGN INTENT.