

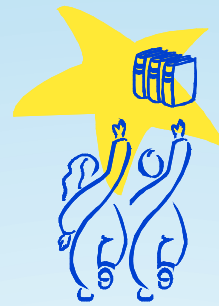
Expectations of Excellence for All Staff

- ✓ Kids First
- ✓ Character
- ✓ Positive Attitude
- ✓ Professionalism
- ✓ Excellence
- ✓ Initiative
- ✓ Enthusiasm
- ✓ Collaboration
- ✓ Be Nice



ACHIEVEMENT - ATTITUDE - ACTIONS

We are
Clark-Pleasant Schools
Home of the Warriors



Commitment.....Excellence

CONTACT

Dr. John T. Schilawski
Assistant Superintendent
jschilawski@cpcsc.k12.in.us

**CLARK-PLEASANT COMMUNITY
SCHOOL CORPORATION**

50 Center Street
Whiteland, IN 46184
Phone: 317-535-7579
www.cpcsc.k12.in.us



**Together We Achieve
Great Things**

Teaching for
Clark-Pleasant
Community Schools



The mission of the Clark-Pleasant Community School Corporation is to provide an educational program that enables students to make positive contributions to society and be challenged to excel as responsible lifelong learners.



Where is our district?

CPCSC is located on the south side of Indianapolis, Indiana in Johnson County. Interstate 65 runs through the heart of the district. Our location puts us on the cusp where the urban, suburban and rural livelihoods combine to provide a wholesome community.



Demographic Information

- Student Enrollment: 6,700
- Student Diversity: 16%
- Special Needs Population: 14.16%
- English Language Learners: 4%
- Instructional Staff Members: 450
- Total Employees: 800

What does CPCSC offer?

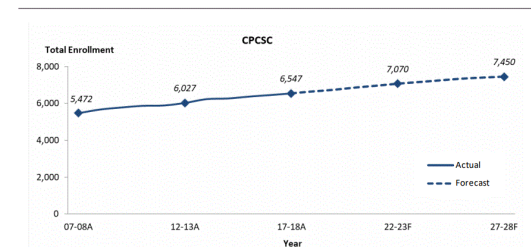
- Clark-Pleasant has an innovative and progressive curriculum, which is challenging and prepares students for success.
- We hold fast to a collaborative environment based on principles of the Professional Learning Community.
- Clark-Pleasant teachers qualify for federal loan forgiveness programs.
- We offer a competitive salary and extensive yet affordable insurance benefits.
- Clark-Pleasant has a strong infrastructure for integrated classroom technology.
- Clark-Pleasant hosts district, state, regional and national professional development events yearly.
- Clark-Pleasant employees rate CPCSC a Top Workplace
- State testing results place Clark-Pleasant in the top 15% in the State of Indiana.

What are our schools?

Sawmill Woods Preschool (Pre-K)
Break-O-Day Elementary (K-5)
Clark Elementary (K-5)
Grassy Creek Elementary (K-5)
Pleasant Crossing Elementary (K-5)
Whiteland Elementary (K-5)
Clark-Pleasant Middle School (6-8)
Whiteland Comm. High School (9-12)
Clark-Pleasant Academy

Base Forecast

Total



Note: A indicates actual enrollment; F indicates enrollment forecast.

Enrollment Report (Fall 2017)

16

District Performance

CPCSC has multiple Four Star Schools. ★★★★★

CPCSC consistently scores among the highest performing school districts within the State of Indiana.

CPCSC's performance has earned recognition as an "A" Corporation from the Indiana Department of Education multiple times.