

# WARRIOR WIRE



A PUBLICATION OF  
**SMITHVILLE**  
School District  
SUMMER 2022

## ***Congratulations, Graduates!***



PRRST STD  
U.S. Postage  
**PAID**  
BLS

Smithville School District  
655 S Commercial Ave  
Smithville, MO 64089

**TEACHER OF THE YEAR**  
**SUPPORT STAFF OF THE YEAR**  
**WARRIOR PRESCHOOL  
PROGRAM**





**Platte-Clay  
Electric Cooperative**

A Touchstone Energy® Cooperative 

# YOUR POWER YOUR WAY

Platte-Clay Electric Cooperative empowers consumer-members with the tools they need to make smart energy choices. Energy efficiency incentives, green power options and demand-based billing means endless possibilities for PCEC members. It's easier than ever to take control and save.

**LEARN MORE AT [WWW.PCEC.COOP](http://WWW.PCEC.COOP)**

## SUPERINTENDENT'S LETTER

The end of a school year can be both exciting and sad. It is exciting to wrap up a year's worth of academic effort, but sad to close another chapter of our lives. This sentiment really hits home for me this spring, as I am concluding my thirteenth and final year in the Smithville School District.

In July, I will begin my 29th year in education as the Assistant Superintendent for HR in the North Kansas City School District. I am excited for the new challenges that await me; however, I leave behind a wonderful school district, supportive community, and many fond memories.

I would like to take this opportunity to say thank you for being so supportive of your schools and thank you for sharing your wonderful children with us. It was truly a pleasure to serve Smithville, and remember, ***it is always a great day to be a Warrior!***

Sincerely,



Todd Schuetz, Ed.D., Superintendent of Schools  
Interim Superintendent: Denise Harwood



Smithville School District's **Warrior Wire** is a newsmagazine published quarterly. Editorial, photography and artwork is created by Smithville School District's Communications Department, staff, and students. To receive a copy of the **Warrior Wire**, call (816) 532-0406.

### Smithville School District

655 S. Commercial Ave.  
Smithville, MO 64089  
(816) 532-0406

**Superintendent of Schools:**  
Dr. Todd Schuetz

**Interim Superintendent:**  
Denise Harwood

**Asst. Superintendent of  
Academic Services:**  
Dr. Michelle Kratofil

**Executive Director of  
Support Services:**  
Robert Hedgecorth

**Board of Education:**  
Jeff Bloemker (Pres),  
Susan Whitacre (VP),  
Whitney Carlile,  
Denney Fales,  
Scott Haggerty,  
Scott Jacoby, &  
Ian Saxton

### CONNECT WITH US



**Smithville  
School District**



**@SmithvilleSD**



**SmithvilleSD**



## SMITHVILLE SCHOOL DISTRICT ADMINISTRATION



Denise Harwood,  
Interim  
Superintendent



Michelle Kratofil,  
Assistant  
Superintendent of  
Academic Services



Robert Hedgecorth,  
Executive Director  
of Support Services



Andrea Ambrosion,  
Director of Special  
Services



Kim Davis,  
Director of Human  
Resources

## SMITHVILLE HIGH SCHOOL



Tracy Platt,  
Principal



Monica Leary,  
Assistant  
Principal



Brett Lackey,  
Assistant  
Principal



Darren Shaffer,  
Athletic Director/  
Assistant  
Principal

## SMITHVILLE MIDDLE SCHOOL



Tod Winterboer,  
Principal



Jeff Haynes,  
Assistant  
Principal

## HORIZON ELEMENTARY SCHOOL



Kristi Mellon,  
Principal



Taylor Jahn,  
Assistant  
Principal

## MAPLE ELEMENTARY SCHOOL



Rena Hawkins,  
Principal



Ashley Doll,  
Assistant  
Principal

## EAGLE HEIGHTS ELEMENTARY



Rachael  
Marchetti,  
Principal



Justin Orscheln,  
Assistant  
Principal



# A JOURNEY OF HOPE, HEALING, AND RECOVERY

On Wednesday, May 4th, Kevin Hines shared his journey of hope, healing, and recovery at the Smithville Performing Arts Center. Kevin attempted to take his own life by jumping off the Golden Gate Bridge in 2000. Kevin's miraculous survival and story has inspired people worldwide. He teaches people of all ages the art of wellness and the ability to survive pain with resilience.

"The Kevin Hines presentation was one filled with hope for those struggling with mental health issues, or what he termed "brain pain." Three questions Mr. Hines recommended that we ask anyone struggling are: "Are you ok?", "Is something wrong?", and "Can I do anything to help you?" Sometimes people only need one person to show kindness and compassion. We are each challenged to be the one!", said Denise Harwood, Smithville School District's Director of Student Services.

This event was provided free to the community by Saint Luke's North Hospital, Saint Luke's North Hospital Auxiliary, Tri-County Mental Health Services, and Smithville School District.



# BEFORE & AFTER SCHOOL CARE WITH INNOVATION LEARNING

Innovation Learning, Smithville School District's before and after school provider, would like to invite you to enroll in our school year programs by going to [www.innovationlearning.com](http://www.innovationlearning.com). We provide a program designed to inspire kids to be the innovators of tomorrow through science, technology, engineering, arts, math, and physical fitness activities designed to teach them communication, collaboration, critical thinking, and creativity skills. Our program operates from 6:00 am to the start of the school day and after school to 6:00 pm on regular school days. We provide full day programs when school is closed, early release day programs, and inclement weather day programs to care for your kids when school is canceled. For more information, call Jason Gilbertson, Area Director, at (816) 825-6166 or our Customer Service line at (866) 239-3661.

*Thank You,*



and



**for partnering with us to provide students with  
Real World Learning opportunities!**



## 2022-2023 SCHOOL YEAR

**First Day - Tuesday, August 23**

**Last Day - Thursday, May 25**

### **Eagle Heights, Horizon & Maple Elementary Schools**

Grades PreK-6

M, T, Th, F

8:45 am to 3:45 pm

Doors Open at 8:30 am

W

9:05 am to 3:45 pm

Doors Open at 8:50 am

### **Smithville Middle School**

Grades 7-8

M, T, Th, F

7:35 am to 2:38 pm

Doors Open at 7:20 am

W

7:55 am to 2:38 pm

Doors Open at 7:40 am

### **Smithville High School**

Grades 9-12

M, T, Th, F

7:45 am to 2:41 pm

Doors Open at 7:25 am

W

8:05 am to 2:41 pm

Doors Open at 7:30 am

# PARENTS AS TEACHERS

In the first few years of life, children learn more and at a faster pace than at any other time in life. You help shape your child's future through the kinds of experiences you provide. Your baby was born to learn, and as a parent, you are your child's first and most important teacher! Parents as Teachers (PAT) is serving the future warriors of Smithville School District. If you have a baby, toddler or preschooler, we are here to serve your family. PAT is a free early childhood family education program to assist and support families in preparing their children for success in school and beyond.

PAT gives parents knowledge in language development, intellectual growth, motor skills, and the parent-child relationship. When enrolled in Smithville PAT, families will receive:

- Certified parent-educator home visits
- Developmental, social-emotional, vision, hearing and health screenings
- Parent-child activities and parent learning opportunities

PAT is designed to foster strong, loving relationships between parents and their children.

For more information about the PAT program contact [grusenmm@smithville.k12.mo.us](mailto:grusenmm@smithville.k12.mo.us) or (816) 532-0406.



Scan the QR Code  
to enroll:



## UPCOMING ACTIVITIES

### Splash into the New Year

Friday, August 26; 10:30 am to 12 noon, Smithville Splash Pad, 19535 Corbyn Ln

### Meet Me at the Park

- o Tuesday, September 6; 10-11 am, Hills of Shannon Subdivision Playground, Derby Rd.
- o Wednesday, September 14; 10-11 am, Cedar Lake Estates Playground, S. Prairie Rose St.
- o Thursday, September 22; 10-11 am, Harborview Playground, Marina Dr.
- o Friday, September 30, 10-11 am, Forest Oaks Subdivision, Forest Oaks Dr.

(In the event of inclement weather, activities will be moved inside the PAT office, 655 S. Commercial Dr.)

### Conscious Discipline Book Study *Easy to Love, Difficult to Discipline*

2nd Mondays of the month beginning September 12; 6-7 pm (Adults Only)



**CONGRATULATIONS, GRADUATES!**

CLASS OF

**2022**



**ALWAYS A WARRIOR!**





2021-2022

## TEACHER OF THE YEAR



Haley Jordan  
Smithville Middle School

2021-2022

## SUPPORT STAFF OF THE YEAR



Mary Kay Grusenmeyer  
Parents As Teachers

## WARRIOR PRESCHOOL PROGRAM



The 2021-2022 school year was the first year of the Warrior Preschool Program, a tuition-based preschool program at Smithville School District. The goal of our Warrior Preschool Program is to provide students with an opportunity to engage with peers and educators, giving a head start on school readiness skills in a real school environment. Mrs. Heidi Uptegrove, preschool educator, stated, "The honor of being an Early Childhood Educator has awarded me the opportunity to provide learning experiences to bright young minds and offered the freedoms necessary to expose these students to all the wonders of our awe-inspiring world."

Warrior Preschool Program is housed at Eagle Heights Elementary School and offers half-day am, half-day pm, and full-day classes. For more information on the Warrior Preschool Program, call Brenda Dion at (816) 532-0406.



SMITHVILLE  
SCHOOL DISTRICT



## 2022 Retirements



Kyle Neilson,  
Custodian



Peggy Renz,  
1st Grade  
Teacher



Renee Slack,  
Principal



Steve Tyrer,  
Social Studies  
Teacher

### Thank you

for your service & dedication to our  
students & community!

O N C E A W A R R I O R ,  
A L W A Y S A W A R R I O R

Keeping your home comfortable for over 70 years.

Family Owned and Operated, Licensed & Insured,  
Satisfaction Guaranteed, Free Estimates  
Service, Sales & Parts

**www.gfac1948.com**  
Service • Sales • Parts  
**816.452.0400**

\*Financing available. Subject to credit approval on new equipment. See store for detail.





**AMTC FARMERS MARKET & A Meal That Counts**

Choose Your Local Community

Tuesday-Friday 9-6 pm  
Saturday 9-3 pm  
Open Year Round!

Money that you spend shopping at AMTC to support your local farmers goes right back into the community by funding the non-profit, A Meal That Counts. You help us to stomp out food anxiety within the local school district and senior population. You are not only choosing a healthier option for you and your family, but you are helping to support your local community.

Come check us out!

**816-518-9520**  
**110 N. Bridge St.**  
**Smithville, MO**



**We are Smithville's Do it Best® Hardware & Rental**

**Services**

- Glass Cutting
- Key Services
- Paint Color Matching
- Pipe Cutting/Threading
- Propane Exchange
- Repair Services
- Ship-To-Store for FREE

**M-F: 7am-7pm  
Sat: 8am-6pm  
Sun: 9am-5pm**

**116 N 169 Highway  
(816) 532-0525**



**Best Service. Best Customers.**

IF YOUR BACHELOR'S DEGREE DIDN'T LEAD TO THE CAREER YOU ALWAYS ENVISIONED...

**DON'T MAKE THE WORLD WAIT.**



**EARN A MASTER'S DEGREE AND COMPLETE TEACHING LICENSE REQUIREMENTS ONLINE IN 12 MONTHS.**


APPLY BY APRIL 1, 2023 FOR THE MAY 2023 COHORT  
[online.k-state.edu/campaign/master-of-arts-teaching/](https://online.k-state.edu/campaign/master-of-arts-teaching/)


**KANSAS STATE UNIVERSITY**  
College of Education

**MASTER OF ARTS IN TEACHING**

MCC-MAPLE WOODS

# YOUR SMART CHOICE







- Large variety of programs
- Small classes
- Best tuition value in the Northland
- Easy to transfer credits

**THANK YOU FOR VOTING US THE BEST IN THE NORTHLAND!**

**mcckc.edu/VisitMW**  
**816.604.3587**

**YOUR COLLEGE FUTURE.**   
@MCCKansasCity



*Proudly Serving*

*The Smithville Area & School District*

*Everything under the Sun!*




**Experience the Holliway's Outlet Difference**

Hollway's Outlet has been serving the residents of Smithville and the surrounding areas for almost a decade. We are proud to offer a variety of everyday household items at affordable prices. At Hollway's Outlet, you're guaranteed to find friendly customer service, new inventory on a daily basis, and screamin' good deals. From closeout sales to warehouse overstocks, we get name-brand inventory from major retailers so you're sure to find the products you're looking for.

**Furniture/ Mattress / Home Goods/ Visit Us in 2022!**

**Hollway's Outlet**

**Visit Our Locations Today!**

3734 Pear Street, St. Joseph 64503    1501 S. HWY 169, Smithville 64089  
**816-671-0429    816-873-3215**

[www.hollwaysoutlet.com](http://www.hollwaysoutlet.com) • [hollwaysoutletplaza@gmail.com](mailto:hollwaysoutletplaza@gmail.com)

Monday Through Saturday 9 am - 7 pm Sunday 1 pm - 5pm



**World Class Award Winning BBQ**

**Proud to Support Smithville Schools!**



Located in Historic • Downtown Smithville  
109 E Main, Smithville, MO 64089

(816) 866-4337 • [www.chopsbbqandcatering.com](http://www.chopsbbqandcatering.com)

75159103

**"LARGEST INDEPENDENT REAL ESTATE  
COMPANY NORTH OF THE RIVER"**



**RESIDENTIAL-FARMS-LOTS &  
LAND-COMMERCIAL**

**816-532-6101**

[WWW.SHOW-MEREALSTATE.COM](http://WWW.SHOW-MEREALSTATE.COM)



**LAND-REAL ESTATE-  
PERSONAL PROPERTY  
SERVING THE  
ENTIRE MIDWEST**

**816-532-6101**

[WWW.TALLEYAUCTIONS.COM](http://WWW.TALLEYAUCTIONS.COM)

75159194

# Picture This, You with Clay!

**Celebrate  
Clay  
ENTER OUR  
BICENTENNIAL  
PHOTO  
CONTEST!**



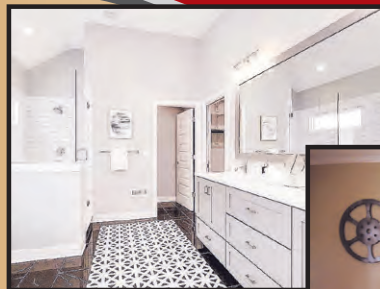
Capture a selfie with our  
Bicentennial Mascot, Clay,  
for a chance to win cash and prizes



75157526

**Find Clay at Clay  
County Historical Sites  
& Mid-Continent Public  
Library branches**

## WILSON'S FLOOR COVERING, INC.



*"Turning houses  
into homes for  
over 34 years."*

**One  
MANNINGTON**

75159189

**Sales and Installation**

**Carpet • Hardwood • Laminate •  
Tile • Natural Stone • Vinyl • Cork**

*Design Services and Financing Available*

**Wilson's Floor Covering, Inc.**

**816.858.2727**

[www.plattecacitycarpet.com](http://www.plattecacitycarpet.com)



15335 Knighton Ave. • Platte City, MO 64079





**Home of the Smithville  
Warriors Girls & Boys  
Golf Teams**

**Visit our Golf Shop for  
Holiday Golf Gifts Ideas**

Award winning pro shop  
[www.paradisepointegolf.com](http://www.paradisepointegolf.com)

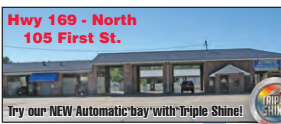
**Pro Shop 816-532-4100  
18212 Golf Drive  
Smithville, MO 64089**

- Check out our website for specials!  
[www.paradisepointegolf.com](http://www.paradisepointegolf.com)
- 36 Hole golf complex
    - Posse and Outlaw
    - Right on shores of Smithville Lake
  - Huge golf shop
  - Membership opportunities available
  - Excellent tournament venue
  - Snack bar, driving range, lessons available
  - 4,000 sq. ft. banquet facility
  - Exciting "Hideout Lounge"



## Saluting Smithville Schools Pro Carwash

2 Locations in Smithville OPEN 24 HOURS  
Now accepting credit cards in all bays and vacuums!



**Both Locations offer:**  
Automatic Bays With Dryer Option • Shampoo/Fragrance Machines  
Tall Bays For RVs & Boats • Vacuum & Dry-Off Areas With Sink • Vending

ENHANCE YOUR  
CLASSROOM  
OR SCHOOL

**DON'T  
MAKE  
THE  
WORLD  
WAIT.**

## CURRICULUM AND INSTRUCTION DOCTORATE

COMPLETE AN Ed.D.  
ONLINE IN THREE  
YEARS WHILE YOU  
CONTINUE TO TEACH.

**KANSAS STATE  
UNIVERSITY**

College of Education

COHORTS START EACH SUMMER,  
BUT YOU CAN JOIN US ANYTIME.

[online.k-state.edu/campaign/  
curriculum-instruction/](http://online.k-state.edu/campaign/curriculum-instruction/)



**PAUL STEVENS  
D.D.S., P.C.**



**NICOLE VOGEL  
D.D.S.**



## SMITHVILLE DENTAL

### General Dentistry

102 North East 92 Highway | Smithville, MO 64089

816.532.0545 | Fax: 816.532.4710

Hours: Monday - Thursday 8:00 a.m. - 5:00 p.m.  
one Friday each month 8:00 a.m. - 5:00 p.m.

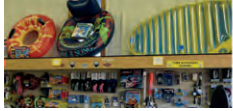


Smithville Lake's Boating Headquarters

# Smithville MARINE

Sales - Parts - Service - Storage

Bass and Fishing Boats Pontoons • Deckboats Runabouts • Outboards



Water Sports



Parts and Accessories



Repair and Restoration

Serving area boaters for more than three decades!

Shop online at...[www.SmithvilleMarine.com](http://www.SmithvilleMarine.com) 816-532-4000

75159187

## HARTMAN REAL ESTATE TEAM

*Specializing in Residential,  
Commercial, Land and  
New Construction*



1101 US 169 Hwy Smithville  
Office 816-532-6101

Dan Hartman: 816-419-8773

Starla Janes: 816-289-6240

Brigette King: 816-799-2352

Francie Schilling: 816-584-0258

Licensed in Missouri and Kansas.

Specializing  
in  
Commercial  
& Business  
to Business  
Services



# PRYOR MECHANICAL

HONOR AND INTEGRITY IN SERVICE

"THATS WHAT WE ARE ALL ABOUT"

**816-587-PLMB (7562)**

**Fax: 816-532-1115**

[www.pryormechanicalkc.com](http://www.pryormechanicalkc.com)

75159186

© 2021 FORBES MEDIA LLC. USED WITH PERMISSION

Forbes **2021**  
**BEST  
BANKS IN  
AMERICA**

**4th Best Bank in America**  
*by Forbes Magazine*

[CentralBank.net/Forbes2021](http://CentralBank.net/Forbes2021)

AS PART OF CENTRAL BANCOMPANY



## Central Bank of the Midwest

Strong roots. Endless possibilities.™

1603 US 169 HWY | 816-532-0700 302 W Main St | 816-532-9200

Member FDIC

75155610





# Life is better *in motion*

## Get moving again to the life you love.


At Liberty Hospital Orthopaedics staffed by MU Health Care physicians, we offer excellence in joint care that's close to home. Our fellowship-trained orthopaedic specialists support you in staying active – every step of the way.

This is where better lives are set in motion.

[libertyhospital.org/lifeinmotion](http://libertyhospital.org/lifeinmotion)  
816.781.6066



 Health Care



**Kathy chose  
the leader in  
heart care to  
save her life.**

**You Deserve A Leader.**

Like Kathy, you don't plan for a major heart problem. If it happens, you need a cardiologist who cares for the most complex problems, using the most advanced technology and procedures. Choose our dedicated experts to give your heart strength and your mind peace — it's what you deserve.

**Learn more at [YouDeserveALeader.com](https://www.youdeservealeader.com)**

