



# WARRIOR WIRE



A PUBLICATION OF  
**SMITHVILLE**  
School District  
SUMMER 2020

# VOTE.

on August 4th, 2020

---

Smithville School District will ask  
voters to consider two questions on August 4th.

PRSRT STD  
U.S. Postage  
**PAID**  
BLS


Smithville School District  
655 S Commercial Ave  
Smithville, MO 64089

**NEW STUDENT  
ONLINE REGISTRATION  
GRADUATION**

# POWERING YOUR SUMMER READING.



**Platte-Clay  
Electric Cooperative**

A Touchstone Energy® Cooperative 

Providing safe and reliable  
energy so you can enjoy life's  
quiet moments. Learn more at  
**[www.PCEC.coop](http://www.PCEC.coop)**

# Superintendent's Letter

I hope this edition of the Warrior Wire finds your family healthy and fully entrenched in the joys that summer can bring. I am pleased that summer is here as it means the challenges that COVID-19 brought us this spring are behind us. It would be foolish of me to stop that thought there as we know challenges likely lie ahead for this fall.

Know that your administration is planning for three options for school this fall. The best option and what we are hoping for is face-to-face school. Whether this is a realistic possibility remains to be seen but we do our best work when we have the opportunity to have our students in our presence.

On the opposite end of the spectrum, our environment could dictate a continuation of our distance learning model. Although our staff and students did a great job this spring of flipping the switch from face-to-face to online learning, many students experienced online fatigue as the novelty of this instructional approach waned.

Our final scenario would be something in between these two models. Meaning at any given time some students would be learning on their school campus with others learning from home.

Planning for all three of these scenarios will keep us very busy this summer along with communicating with our public about two questions that will be on the August 4 ballot. You will recall that the Smithville School District will ask voters to approve a 14.1 million dollar bond issue and permission to transfer funds from the debt service levy to the operational levy.

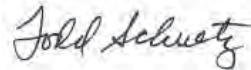
The bond issue would pay for an activity center on the north end

of the football field to allow for safe program expansion, a six classroom addition at Eagle Heights Elementary as it is already full, and infrastructure improvements to enhance safety and efficiency. The second question, a levy transfer, will allow us to continue to service our debt but add \$250,000 to our operational funds. This is very much needed in light of recent budget cuts from the state.

These two questions will both result in a no-tax rate increase and this issue of the Warrior Wire will provide many resources to get your questions answered. Please do not hesitate to reach out to me, however, for additional information at [schuetzt@smithville.k12.mo.us](mailto:schuetzt@smithville.k12.mo.us) or 816-532-0406.

Thank you for supporting our staff during these challenging times and it is a great day to be a Warrior!

Sincerely,



Todd Schuetz, Ed.D., Superintendent of Schools



Introducing

## NEW STUDENT ONLINE REGISTRATION

New to the Smithville School District? Enrolling is as easy as **1-2-3**

01

Go to the **District website** -> **Parent Resources** Tab -> **Registration Link** -> Complete the **Pre-registration for Enrollment**

02

**Gather your documents:**

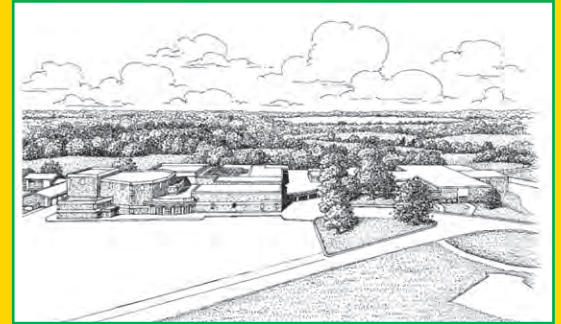
- **Students Proof of birth**
- **Student's Immunization Records**
- **Proof of Residency**

03

Follow the steps in your email with the subject **"Smithville School District New Student Enrollment"** to create a Parent PowerSchool Portal Account. Once in your account, click forms from the menu on left side of the screen. **Complete each form.**

# CONGRATULATIONS TO THE GRADUATES FROM THE CLASS OF 2020!

Always a Warrior!



**Graduation For The Class Of 2020**  
**Sunday, July 18, 2020**

<b>Welcome</b> .....	<b>Dr. Tracy Platt</b> High School Principal
<b>Processional</b> .....	<b>“Pomp &amp; Circumstance”</b> Arranged by James D. Ployhair
<b>Introduction</b> .....	<b>Dr. Todd Schuetz</b> Superintendent of Schools
<b>“Count the Stars”</b> .....	<b>Lakeside Singers</b> by Andy Beck Directed by Marcus Duncan
<b>Recognitions</b> .....	<b>Chris Heslinga</b> Associate Principal
<b>Salutatorian</b> .....	<b>Paige Elizabeth Myers</b>
<b>Introduction of Speakers</b> .....	<b>Chris Heslinga</b> Associate Principal
<b>Valedictorian</b> .....	<b>Joshua Drake Grandstaff</b>
<b>Presentation of Class</b> .....	<b>Dr. Tracy Platt</b> High School Principal
<b>Conferring of Diplomas</b> .....	<b>Denney Fales</b> President, Board of Education
<b>Recessional</b> .....	


### Class 2020 Quote

"Part of the journey is the end." - Tony Stark

[illegible]

(in Mensuram)  
(Dallas Scott Atherton  
Jacob Lawrence Holland)

**Legend**

Legend		
Scholarship Diploma - Gold 	FBLA - Blue/Gold 	Interact - Blue/Gold/White 
National Honor Society - Collary 	FCCLA - Red/White 	
Northland CAPS - Multi	FFA - Blue/Gold	
NHHS -	STUCCO Officers - Light Blue/White	
Academic Letter -	STUCCO - Light Blue	

Smithville High School  
2020  
Commencement

July 18th, 2020

*"Part of the journey is the end." - Tony Stark*

On August 4th, 2020,

# The Smithville School District will ask voters to consider two questions.

---

Q1.

Shall the Smithville R-II School District issue its general obligation bonds in the amount of \$14,100,000 for the purpose of constructing, improving, renovating, furnishing and equipping school facilities, including construction of six additional classrooms at Eagle Heights Elementary School, a field house/activity center at the stadium, playground improvements, and various mechanical improvements?

If this question is approved, the District's debt service property tax levy is estimated to remain unchanged at \$1.1535 per one hundred dollars of assessed valuation of real and personal property.

Q2.

Shall the Board of Education of Smithville R-II School District be authorized to increase the District's operating property tax levy by \$0.10 per one hundred dollars of assessed valuation for the purpose of paying general operating expenses of the District?

If this question is approved, the adjusted operating property tax levy of the District is expected to increase from \$3.9465 to \$4.0465 per one hundred dollars of assessed valuation of real and personal property and the District expects to make a corresponding reduction of its debt service property tax levy by \$0.10 from \$1.1535 to \$1.0535 per one hundred dollars of assessed valuation, resulting in the estimated overall District adjusted property tax levy remaining unchanged at \$5.1000 per one hundred dollars of assessed valuation.

# Question Breakdown

## Question 1

If Question 1 is approved, the **no tax rate increase bond issue** will result in the completion of Phase 1 of the District's Master Building Plan.

Each phase of the Master Building Plan is contingent upon the successful completion of Phase 1. There are three phases in the current Long-range Master Building Plan. The components of the \$14.1 million **no tax rate increase bond** package include Phase 1 projects.

In a no tax rate increase bond issue, like Question 1 of Smithville School District's bond issue, districts ask voters to hold the tax rate at the same rate in order to fund future facility needs.

The district will ask voters on the **August 4, 2020** ballot (Question 1) to keep the debt service tax rate at \$1.1535 in order to fund an Activity Center, additional classrooms at Eagle Heights Elementary, elementary playground safety improvements, and other projects throughout the district.

## Question 2

If Question 2 is approved by the voters, the **no tax rate increase levy fund transfer** will generate about \$250,000.

The funds will be used to increase programs to enhance opportunities for all students, increase funding for classroom supplies, technology for students and staff, pay staff competitive wages, and other district wide needs.

In the short-term, the funds would be used to stabilize our budget due to recent cuts in the state allocations because of the global pandemic. In the future, the funds would be used to implement the current strategic plan.

With the approval of Question 2, the District expects to make a reduction of its debt service property tax levy by \$0.10, from \$1.1535 to \$1.0535 per one hundred dollars of assessed valuation.

This will result in the estimated District adjusted property tax levy remaining unchanged at \$5.1000 per one hundred dollars of assessed valuation.

---

- EQUITY - SAFETY -  
- FISCAL RESPONSIBILITY -

---

# Master Building Plan

## Phase 1

---

Contingent upon approval of the **no tax rate increase bond** mentioned in Question 1.

### ■ ACTIVITY CENTER

The construction of an Activity Center at the Stadium addresses overcrowding, student safety, and expanded opportunities for all students.

### ■ PLAYGROUND UPGRADES

Improvements to all elementary playground surfaces to address student safety and ADA accessibility.

### ■ HIGH SCHOOL KITCHEN HOOD

Improvement of the kitchen hood at Smithville High School will result in fire suppression for code compliance and will guarantee safety for students and staff.

### ■ EAGLE HEIGHTS CLASSROOMS

The addition of six classrooms and three collaboration spaces at Eagle Heights Elementary to address current crowding and to allow for additional learning space in the future.

### ■ REPLACE HVAC SYSTEMS

Improvements at Horizon Elementary will include replacing deferred and under designed HVAC systems to make certain we provide the best learning environments for students.



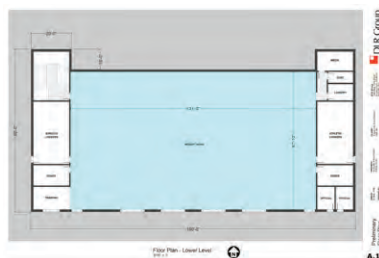
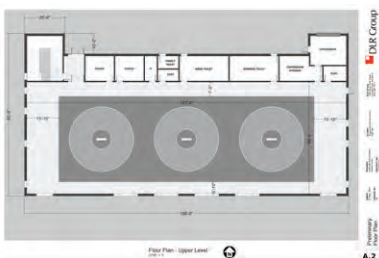
## Phase 1: Activity Center

The construction of an Activity Center at the Stadium addresses overcrowding, student safety, and new opportunities for all students.

The Activity Center will include a classroom/weight room, wrestling room, restrooms, and concessions.

The Activity Center will expand curricular opportunities and be the first milestone to expand the occupancy of the Smithville High School Gymnasium with the creation of a north and south mezzanine.

In addition, the first of several improvements at the stadium to increase access, seating, and parking to enhance the fan experience and opportunities for students.

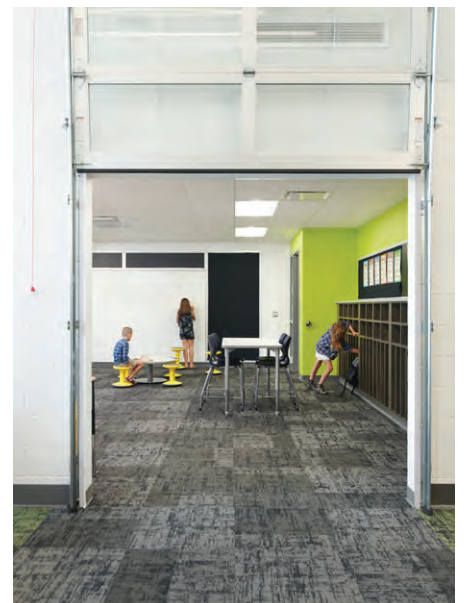




## Phase 1:

### Classrooms at Eagle Heights Elementary

Addition of six classrooms and three collaboration spaces at Eagle Heights Elementary to address current crowding and to allow for additional learning space in the future.



Phase 1:

## Safety & Equity Upgrades at Elementary Playgrounds

Improvements to all elementary playgrounds will address student safety and ADA accessibility.



For more information about the Smithville R-II School District and the August 4th ballot, please visit [SmithvilleSchoolDistrict.net](https://SmithvilleSchoolDistrict.net)

SMITHVILLE SCHOOL DISTRICT'S *WARRIOR WIRE* IS A NEWSMAGAZINE PUBLISHED QUARTERLY DURING THE SCHOOL YEAR. EDITORIAL AND PHOTOGRAPHY IS CREATED BY THE SMITHVILLE SCHOOL DISTRICT'S STAFF, STUDENTS, AND COMMUNITY, AND PUBLISHED BY NPGCO.

TO RECEIVE A COPY OF THE MAGAZINE CALL 816-532-0406.

SMITHVILLE SCHOOL DISTRICT | 655 S. COMMERCIAL AVE.  
SMITHVILLE, MO 64089 | SMITHVILLESCHOOLDISTRICT.NET

SUPERINTENDENT OF SCHOOLS: DR. TODD SCHUETZ  
ASSISTANT SUPERINTENDENT OF ACADEMIC SERVICES: DR. MICHELLE KRATOFIL

BOARD OF EDUCATION: DENNEY FALES (PRES.), SARAH LAMER (V. PRES),  
WADE HIEFER, IAN SAXTON, LEN MATTHIES,  
SUSAN WHITACRE, SCOTT HAGGERTY

SMITHVILLE HIGH SCHOOL | 816.532.0405  
PRINCIPAL: DR. TRACY PLATT

ASSISTANT PRINCIPAL/ATHLETICS & ACTIVITIES: DARREN SHAFFER  
ASSISTANT PRINCIPAL: MONICA LEARY | ASSISTANT PRINCIPAL: TAYLOR MIDDLETON  
ASSISTANT PRINCIPAL: RACHAEL MARCHETTI

SMITHVILLE MIDDLE SCHOOL | 816.532.1122  
PRINCIPAL: TOD WINTERBOER | ASSISTANT PRINCIPAL: CASEY HUSHA

EAGLE HEIGHTS ELEMENTARY SCHOOL | 816.532.5959  
PRINCIPAL: RENEE SLACH | ASSISTANT PRINCIPAL: ASHLEY DOLL

HORIZON ELEMENTARY SCHOOL | 816.532.4566  
PRINCIPAL: KRISTI MELLON | ASSISTANT PRINCIPAL: CASEY HUSHA

MAPLE ELEMENTARY SCHOOL | 816.532.0589  
PRINCIPAL: DR. RENA HAWKINS | ASSISTANT PRINCIPAL: ASHLEY DOLL

THE SMITHVILLE SCHOOL DISTRICT IS AN EQUAL OPPORTUNITY EMPLOYER AND DOES NOT ILLEGALLY DISCRIMINATE IN ITS PROGRAMS, SERVICES, ACTIVITIES OR FACILITIES AS REQUIRED BY FEDERAL AND STATE LAW.

 SMITHVILLESCHOOLDISTRICT  SMITHVILLES D #SSDPRIDE

## EVERYTHING YOU NEED. EVERYWHERE YOU GO.

Every great journey begins with a first step. When you start a relationship with Central Bank, you'll immediately have access to a community bank with comprehensive offerings, cutting-edge technology and leading-edge banking solutions. We have all the tools you need to move, manage and maximize your money with ease, every step of the way. Discover what's possible with Central Bank. We do banking better.



**Central Bank  
of the Midwest**

Strong roots. Endless possibilities.

[centralbank.net](http://centralbank.net)

Member FDIC 

## Kalani Foundation

EST 2019



### MISSION STATEMENT

Our Mission is to inspire a healthier community by providing immediate resources of shelter, food, clothing and transportation when women, kids and their pets are fleeing domestic violence.

### VISION STATEMENT

We believe that by providing positive resources and education to women and kids fleeing domestic violence that they will understand they are not alone and the road to recovery can be achieved.

**Kalani Foundation**  
**501c(3)**  
EIN # 89-3969651

206 Richardson St. #749, Smithville, MO 64089 T: (816) 832-4016  
*Learn more at [www.kalanifoundation.com](http://www.kalanifoundation.com)*

# Need to see your doctor?

**Now you can  
without leaving home.**



**Telehealth appointments available  
at our primary care and specialty clinics**

**[Libertyhospital.org/telehealth](https://libertyhospital.org/telehealth)**

**HEATING & COOLING**  
**GLADSTONE FURNACE CO.**  
 SINCE 1948

Family Owned and Operated, Licensed & Insured, Satisfaction Guaranteed, Free Estimates, Flat Rate Pricing, Service, Sales & Parts

**www.gfacs1948.com**  
 • Service • Repair • Replacement  
**816.452.0400**

Keeping your home comfortable for over 70 years.

Senior and Military Discounts Available on Service

**TRANE**  
 It's Hard To Stop A Trane!

\*Financing available. Subject to credit approval on new equipment. See store for detail.

**SHOW-ME**  
 Real Estate

"The largest independent real estate company north of the river"

**816-532-6101**  
**www.show-merealestate.com**  
 1101 S US 169 Hwy • Smithville, MO 64089

**PARADISE POINTE**  
**Home of Smithville Warriors Golf Teams**  
 Visit our Golf Shop for Holiday Golf Gifts Ideas

Award winning pro shop  
**www.paradisepointegolf.com**

**Pro Shop 816-532-4100**  
**18212 Golf Drive**  
**Smithville, MO 64089**

- 36 Hole golf complex
- Posse and Outlaw
- Right on shores of Smithville Lake
- Huge golf shop
- Membership opportunities available
- Excellent tournament venue
- Snack bar, driving range, lessons available
- 4,000 sq. ft. banquet facility
- Exciting "Hideout Lounge"

Check out our website for specials!  
**www.paradisepointegolf.com**

27th Annual Award  
 28th Annual Award  
 29th Annual Award

**Your Real Estate Star**

**RE/MAX INNOVATIONS**  
 Experience the Difference

**Starla James**  
 Broker-Associate  
 Kansas City Five Star Real Estate Agent  
 3200 NE 83rd St, Kansas City MO 64119  
 Cell: 816-289-6240 • starlaj@remax.net  
 www.starlajanes.com  
 Licensed in Missouri and Kansas

OVER 14 YEARS EXPERIENCE IN RESIDENTIAL NEW CONSTRUCTION, RESALE AND SMALL ACREAGES



**PAUL  
 STEVENS  
 D.D.S.,  
 P.C.**



**NICOLE  
 VOGEL  
 D.D.S.**



# SMITHVILLE DENTAL

## General Dentistry

102 North East 92 Highway | Smithville, MO 64089

816.532.0545 | Fax: 816.532.4710

Hours: Monday - Thursday 8:00 a.m. - 5:00 p.m.  
 one Friday each month 8:00 a.m. - 5:00 p.m.



**We protect it.  
You live it.**

I'm here to help life go right<sup>™</sup> – so you can enjoy it, while I help protect it. Let's talk about your life insurance options. **CALL ME TODAY.**

**Brewer Insurance Agency Inc.**, Dennis Brewer, Agent  
14450 N US 169 Hwy Suite N, Smithville, MO 64089 • Bus: 816-532-2400



State Farm Life Insurance Company (Not licensed in MA, NY or WI)  
State Farm Life and Accident Assurance Company (Licensed in NY and WI)  
Bloomington, IL

1601487  
75132749

Smithville Lake's Boating Headquarters

**Smithville  
MARINE**

Sales - Parts - Service - Storage

Bass and Fishing Boats Pontoons • Deckboats Runabouts • Outboards



Water Sports



Parts and Accessories



Repair and Restoration

Serving area boaters for more than three decades!

Shop online at...[www.SmithvilleMarine.com](http://www.SmithvilleMarine.com) **816-532-4000**

75132749



**Finish your degree  
in KC**

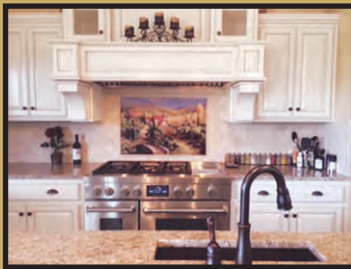
**Individualized advisement  
Convenient class schedules  
Laptop and textbooks provided**

[nwmissouri.edu/kc](http://nwmissouri.edu/kc) | [nwkc@nwmissouri.edu](mailto:nwkc@nwmissouri.edu)



75124896

# Wilson's Floor Covering, Inc.



**One  
MANNINGTON**

*"Turning houses into homes for over 30 years."*

**Sales and Installation: Carpet • Hardwood • Laminate • Tile • Natural Stone • Vinyl • Cork**



*Design Services and Financing Available*

**816.858.2727** • [www.plattecitycarpet.com](http://www.plattecitycarpet.com) • 15335 Knighton Ave. • Platte City, MO 64079

75132747

# WARRIOR WIRE

**Having recently celebrated 150 years of educating students in the Smithville area, the school district is poised to carry on that tradition of excellence for years to come.**

And with communication being a key factor in that endeavor, the district started publishing *The Warrior Wire* in 2018. This quarterly, full-color, glossy magazine, direct mailed to more than 5,000 homes in Smithville, highlights important news and activities happening throughout the district.

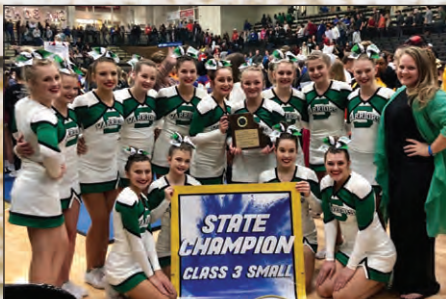
Advertising space is limited, so contact your Account Executive today.



**To learn more about this valuable opportunity, contact one of our helpful consultants today.**

***Space is limited, Call today.***

**816-454-9660**



# More doctors specialists locations

than any other provider in the Northland.

Meritas Health has same-day appointments, extended primary care hours and more than 140 doctors – so you can easily find a provider that fits you and your schedule. And when you choose a Meritas doctor, you're seamlessly connected to a large network of specialists and resources in the Northland – including North Kansas City Hospital – and 15 specialties like cardiology, family medicine, and obstetrics and gynecology.

**Here, there's more for you.**

[MoreMeritas.com](https://www.MoreMeritas.com)

