



LPA



# TERRELL ISD MASTER PLANNING

Bond Committee | ELEMENTARY SCHOOL SCOPE  
October 20, 2021



# PLANNING PRIORITIES



LPA

## Terrell ISD **Planning Principles** are to....

...facilitate a process that utilizes data to inform future planning & growth.

...focus on educational equity to prioritize needs across TISD.

...develop planning strategies that enhance early childhood education.

...prepare for future spaces that maximize student literacy.

...increase student academic outcomes for all TISD students.

...create opportunities to celebrate student identity, campus culture and district brand excellence.

...develop a fiscally responsible plan that maintains the tax rate.

# CAMPUS CONDITION at a glance



LPA

● 30.31



## W.H. Burnett Early Childhood

Top Deficiencies:

- Roofing
- HVAC
- Plumbing

Originally constructed in 1965 and is currently in poor condition with major repair needs. The priority repairs for this site include HVAC system replacements, roofing replacement, providing fire protection sprinkler systems, classroom furnishings, exterior masonry damages, and domestic water main line replacements. All other needs are minor from interior partition damages and interior cosmetic damages that include floor, ceiling, and wall repairs.

● 10.66



## Gilbert Willie, Sr. Elementary

Top Deficiencies:

- Roofing
- Mechanical/Plumbing
- Fire Protection

Originally constructed in 1962 with renovations in 2017 and is in fair condition with minor repairs needed throughout the facility. The priority repairs for this site include HVAC replacements, domestic water main line replacements, providing fire protection sprinkler systems, and food service equipment replacements. All other needs are minor from electrical system repairs to interior cosmetic damages found throughout the facility.

● 11.16

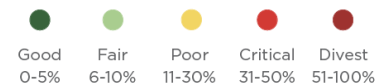


## J.W. Long Elementary

Top Deficiencies:

- Fire Alarm
- HVAC
- Sidewalk Repair

Originally constructed in 2003, and the facility is in fair condition with minor repairs required throughout the facility. The priority repairs for this site include roofing replacement, electrical replacements, HVAC system replacements, food service equipment replacements and sidewalk repair. All other needs are minor from damaged interior cosmetic finishes to exterior modifications.



# CAMPUS CONDITION at a glance



LPA

● 25.65



## Dr. Bruce Wood Elementary

Top Deficiencies:

- HVAC
- Foundation
- Fire Protection

Originally constructed in 1994 with renovations in 2002, this facility is in poor condition with major repairs required throughout the facility. The priority repairs for this site include crawl space joist foundation repairs, HVAC replacements, and providing fire protection sprinkler system throughout the facility. All other repairs are minor from interior cosmetic finishes to exterior masonry structure cracking repairs.

● 21.02

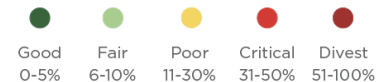


## Global Leadership Academy

Top Deficiencies:

- Roofing
- HVAC
- Fire Protection

Originally constructed in 1952 with renovations in 2018, and is in poor condition. The priority repairs include HVAC system replacements, roofing replacement, providing fire protection sprinkler systems, and food service equipment replacements. This site is in great condition cosmetically, however, major mechanical systems are in poor condition.



# EDUCATIONAL VISIONING OUTCOMES



## Emerging Priorities

Long-Range Planning

Academics (Literacy, Increase rigor & alignment)

Educational Experience (Educational Equity, Space Needs, Learning Environment)

Safety & Security (lighting, cameras, access)

Branding (Spirit, Community Engagement, Parent Resources)

Physical Climate (Indoor air quality, plumbing & ADA)

- Safety & Security Deficiencies
- Playground Deficiencies
- Parking Lots
- Plumbing Challenge
- HVAC Issues



Principal Survey



CAMPUS-SPECIFIC FEEDBACK

# MASTER PLAN OPPORTUNITIES



Elementary School Growth



Literacy / Library Renovations



Fine Arts & STEM



Outdoor Learning & Play



Early Childhood



Campus Culture & Connections



Campus Safety & Security



Physical Condition (e.g., HVAC)

**W.H. BURNETT EARLY CHILDHOOD CENTER**

# W.H. Burnett Early Childhood Center



**Enrollment**  
 Current 238 Students  
 Capacity 479 Students

**Age of Facility**  
 Opened in 1965

**Square Footage**  
 Campus Size 74,312 SF  
 SF/Student 312 SF

Facility Condition Index	
Before Improvements	After Improvements
<b>30.31%</b>	

● Good 0-5%   
 ● Fair 6-10%   
 ● Poor 11-30%   
 ● Critical 31-50%   
 ● Divest 51-100%





# W.H. Burnett Early Childhood Center



Cafeteria Building Entrance



Typical Classroom



Cafeteria with Stage



Admin Area



Library



Common Area



Admin Area Casework



Gymnasium with Stage



Gymnasium

All images taken by LPA.

SITE PHOTOS  
**W.H. BURNETT EARLY CHILDHOOD CENTER**

Terrell Independent School District  
2021 Facility Master Plan



# W.H. Burnett Early Childhood Center

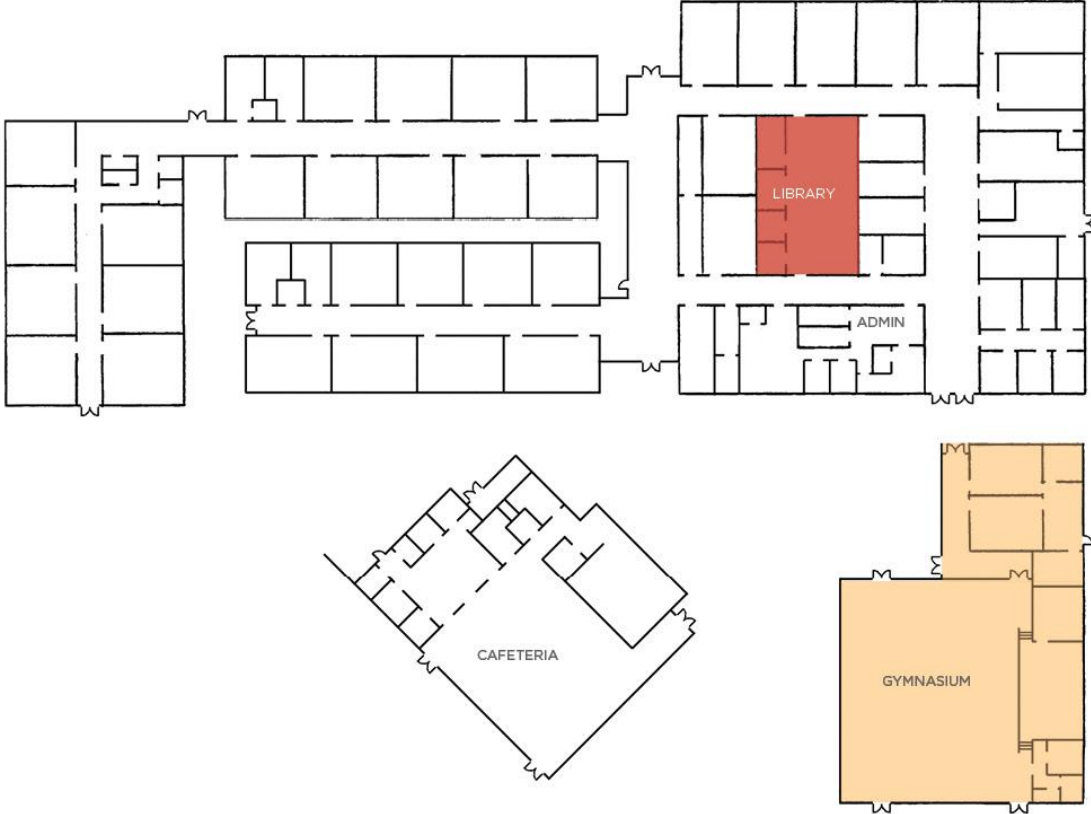


- CLASSROOM
- STEM CLASSROOM
- SPECIAL EDUCATION
- VISUAL/ PERFORMING ARTS
- GYNASIUM
- CAFETERIA & KITCHEN
- LIBRARY/ MEDIA CENTER
- ADMINISTRATION
- BUILDING SUPPORT

HS100	HEAD START ROTATION	666 SF
101	ART ROOM	478 SF
102	ADMIN	
103	ADMIN	250 SF
104	ADMIN	
105	ADMIN	
106	ADMIN	
108	TECH STORAGE	752 SF
HS109	HEAD START TRAINING	838 SF
110	SPECIAL ED.	798 SF
111	REFOCUS	465 SF
112	SPECIAL ED.	764 SF
113	SPEECH	780 SF
114	STEM CLASSROOM	744 SF
HS115	HEAD START ROTATION	675 SF
116	PRE-K	726 SF
217	PRE-K STORAGE	715 SF
218	PRE-K	743 SF
219	PRE-K	756 SF
220	PRE-K	722 SF
221	PRE-K	775 SF
222	PRE-K	712 SF
223	PRE-K	744 SF
224	PRE-K	730 SF
225	PRE-K ROTATION	683 SF
HS326	HEAD START	660 SF
HS327	HEAD START	652 SF
HS328	HEAD START	630 SF
HS329	HEAD START	642 SF
HS330	HEAD START	750 SF
HS331	HEAD START	750 SF
HS332	HEAD START	750 SF
HS333	HEAD START	855 SF
400	PRE-K	715 SF
401	PRE-K	855 SF
402	PRE-K	767 SF
403	ADMIN	767 SF
404	ADMIN	899 SF
405	PRE-K 3 ROTATION	855 SF
406	PRE-K 3 ROTATION	767 SF
500	ADMIN	596 SF
501	ADMIN	566 SF
502	ADMIN	225 SF
CAFETERIA		4461 SF
STAGE		1171 SF
GYMNASIUM		6700 SF
HS1	HEAD START ADMIN	242 SF
HS2	HEAD START ADMIN	205 SF
HS3	HEAD START ADMIN	219 SF
HS4	HEAD START ADMIN	213 SF
HS5	HEAD START ADMIN	252 SF
HS6	HEAD START ADMIN	333 SF
LIBRARY		1839 SF



# W.H. Burnett Early Childhood Center



**Priority 1 Improvements:**  
\$2,894,333

**CONSTRUCTION & RENOVATION**  
Library Renovation  
Playground Surfacing & Access  
New Fencing along S Medora St.  
Security Updates

**FACILITY IMPROVEMENTS**  
Roof Replacement  
New HVAC Controls  
Replace existing domestic water main to and through campus  
Replace sanitary sewer main at original building  
New chiller and pump  
Replace existing fan coil units

**Priority 2 Improvements:**  
\$40,280,643

**CONSTRUCTION & RENOVATION**  
90% Campus Replacement  
Renovate existing Gym building

**FACILITY IMPROVEMENTS**  
N/A

- PRIORITY 1 ADDITION
- PRIORITY 1 RENOVATION
- PRIORITY 2/3 ADDITION
- PRIORITY 2/3 RENOVATION



# W.H. Burnett Early Childhood Center



**Priority 1 Improvements:**  
**\$2,894,333**

**CONSTRUCTION & RENOVATION**  
Library Renovation  
Playground Surfacing & Access  
New Fencing along S Medora St.  
Security Updates

**FACILITY IMPROVEMENTS**  
Roof Replacement  
New HVAC Controls  
Replace existing domestic water main to and through campus  
Replace sanitary sewer main at original building  
New chiller and pump  
Replace existing fan coil units

**Priority 2 Improvements:**  
**\$40,280,643**

**CONSTRUCTION & RENOVATION**  
90% Campus Replacement  
Renovate existing Gym building

**FACILITY IMPROVEMENTS**  
N/A

- PRIORITY 1 ADDITION
- PRIORITY 1 RENOVATION
- PRIORITY 2/3 ADDITION
- PRIORITY 2/3 RENOVATION
- OUTDOOR LEARNING/PLAY
- SAFETY AND SECURITY
- PARKING / DROP OFF
- SITE / ATHLETICS



**GILBERT WILLIE SR. ELEMENTARY SCHOOL**

# Gilbert Willie, Sr. Elementary School



**Enrollment**  
 Current 699 Students  
 Capacity 732 Students

**Age of Facility**  
 Opened in 1962

**Square Footage**  
 Campus Size 100,000 SF  
 SF/Student 143 SF

Facility Condition Index	
Before Improvements	After Improvements
10.66%	

- Good  
0-5%
- Fair  
6-10%
- Poor  
11-30%
- Critical  
31-50%
- Divest  
51-100%



# Gilbert Willie, Sr. Elementary School



Cafeteria



Cafeteria with Stage



Workroom



Typical Classroom



Typical Classroom



Typical Classroom



Library



Staff Lounge



Gymnasium

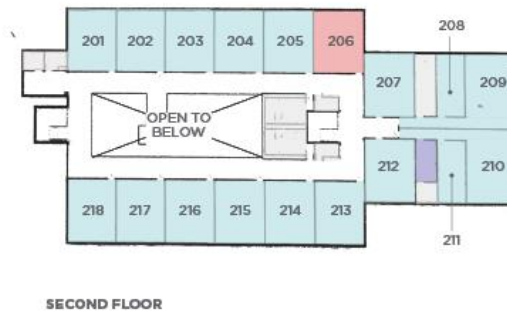
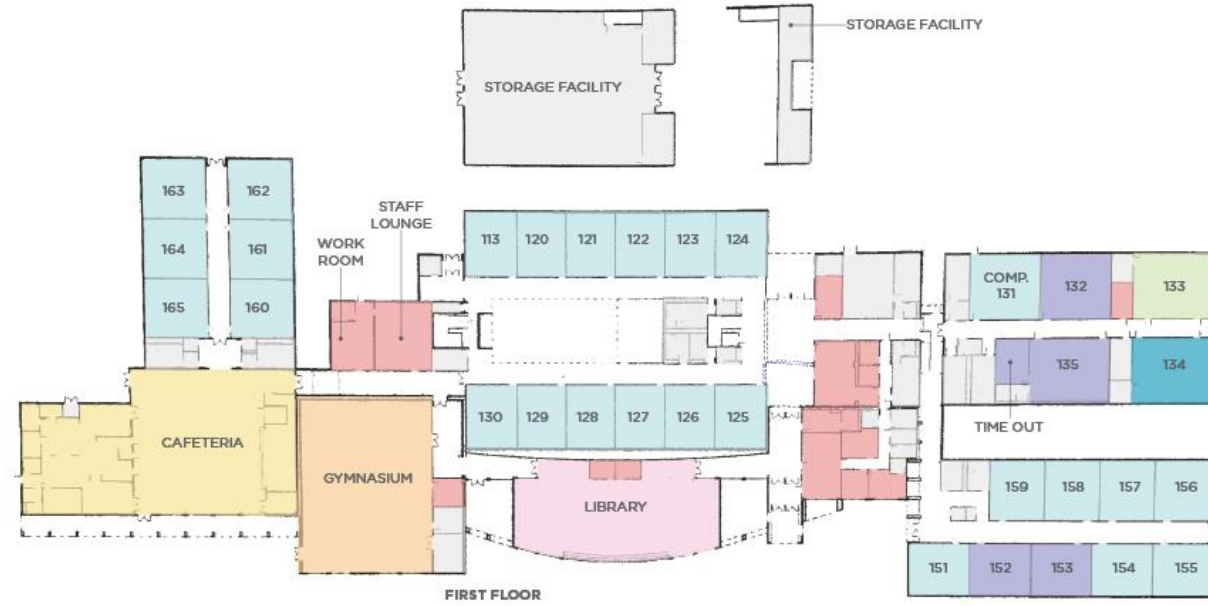
All Images taken by LPA.

SITE PHOTOS  
**GILBERT WILLIE SR. ELEMENTARY**

Terrill Independent School District  
2021 Facility Master Plan



# Gilbert Willie, Sr. Elementary School



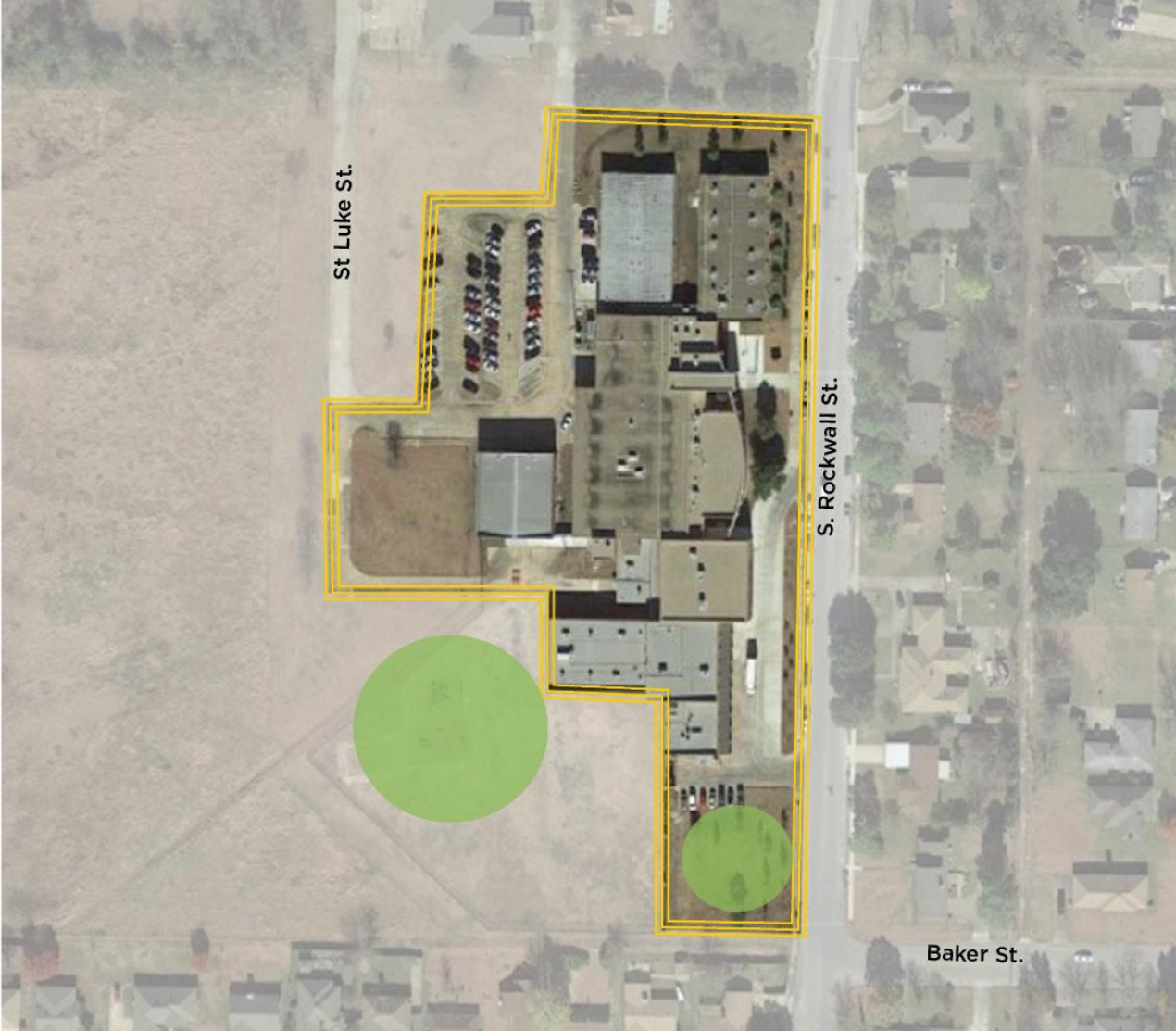
- CLASSROOM
- STEM CLASSROOM
- SPECIAL EDUCATION
- VISUAL/ PERFORMING ARTS
- GYNASIUM
- CAFETERIA & KITCHEN
- LIBRARY/ MEDIA CENTER
- ADMINISTRATION
- BUILDING SUPPORT

FIRST FLOOR		
119	2ND GRADE CLASSROOM	685 SF
120	2ND GRADE CLASSROOM	700 SF
121	2ND GRADE CLASSROOM	700 SF
122	2ND GRADE CLASSROOM	700 SF
123	2ND GRADE CLASSROOM	700 SF
124	2ND GRADE CLASSROOM	705 SF
125	1ST GRADE CLASSROOM	687 SF
126	1ST GRADE CLASSROOM	700 SF
127	1ST GRADE CLASSROOM	702 SF
128	1ST GRADE CLASSROOM	700 SF
129	1ST GRADE CLASSROOM	702 SF
130	1ST GRADE CLASSROOM	712 SF
131	COMPUTER LAB	953 SF
132	LIFE SKILLS	1063 SF
133	MUSIC	1263 SF
134	STEM CLASSROOM	1184 SF
135A	LIFE SKILLS	1075 SF
151	SCIENCE LAB	687 SF
152	SPEECH/ OT	689 SF
153	RESOURCE	689 SF
154	5TH GRADE CLASSROOM	685 SF
155	5TH GRADE CLASSROOM	691 SF
156	5TH GRADE CLASSROOM	775 SF
157	5TH GRADE CLASSROOM	689 SF
158	5TH GRADE CLASSROOM	689 SF
159	RESOURCE	682 SF
160	KINDERGARTEN	792 SF
161	KINDERGARTEN	797 SF
162	KINDERGARTEN	794 SF
163	KINDERGARTEN	794 SF
164	KINDERGARTEN	799 SF
165	KINDERGARTEN	790 SF
CAFETERIA		3928 SF
GYMNASIUM		4517 SF
LIBRARY		3619 SF
TIME OUT		307 SF
STORAGE FACILITY		6170 SF
SECOND FLOOR		
201	4TH GRADE CLASSROOM	743 SF
202	4TH GRADE CLASSROOM	738 SF
203	4TH GRADE CLASSROOM	738 SF
204	4TH GRADE CLASSROOM	738 SF
205	4TH GRADE CLASSROOM	738 SF
206	TECHNOLOGY	748 SF
207	TESTING	687 SF
208	BOOK ROOM	386 SF
209	PLC	875 SF
210	READING/ INTERVENTION	878 SF
211	ESL	386 SF
212	DIAGNOSTICS	687 SF
213	3RD GRADE CLASSROOM	720 SF
214	3RD GRADE CLASSROOM	710 SF
215	3RD GRADE CLASSROOM	710 SF
216	3RD GRADE CLASSROOM	710 SF
217	3RD GRADE CLASSROOM	710 SF
218	3RD GRADE CLASSROOM	720 SF





# Gilbert Willie, Sr. Elementary School



**Priority 1 Improvements:**  
**\$5,270,172**

**CONSTRUCTION & RENOVATION**  
Sound Re-Inforcement at classrooms and collaboration space  
Playground ReImagination  
Security Upgrades

**FACILITY IMPROVEMENTS**  
New Roof replacement  
New Chiller and Package Units  
Upgrade HVAC Controls  
Replace Domestic Water line  
Replace sanitary sewer piping  
New fire sprinkler system

**Priority 2 Improvements:**  
**\$4,381,449**

**CONSTRUCTION & RENOVATION**  
Renovate Old Gym (storage) to Art and Science center  
Renovate old Art/Sci to CR

**FACILITY IMPROVEMENTS**  
Sidewalk and paving revisions  
Exterior Enclosure Improvements  
Interior Finish and Improvements  
Plumbing Improvements  
Electrical work  
Replace Existing Kitchen equip.  
Site Mechanical Utilities

- OUTDOOR LEARNING/PLAY
- SAFETY AND SECURITY
- PARKING / DROP OFF
- SITE / ATHLETICS



# Gilbert Willie, Sr. Elementary School



**Priority 1 Improvements:**  
\$5,270,172

**CONSTRUCTION & RENOVATION**  
Sound Re-Inforcement at classrooms and collaboration space  
Playground ReImagination  
Security Upgrades

**FACILITY IMPROVEMENTS**  
New Roof replacement  
New Chiller and Package Units  
Upgrade HVAC Controls  
Replace Domestic Water line  
Replace sanitary sewer piping  
New fire sprinkler system

**Priority 2 Improvements:**  
\$4,381,449

**CONSTRUCTION & RENOVATION**  
Renovate Old Gym (storage) to Art and Science center  
Renovate old Art/Sci to CR

**FACILITY IMPROVEMENTS**  
Sidewalk and paving revisions  
Exterior Enclosure Improvements  
Interior Finish and Improvements  
Plumbing Improvements  
Electrical work  
Replace Existing Kitchen equip.  
Site Mechanical Utilities

- PRIORITY 1 ADDITION
- PRIORITY 1 RENOVATION
- PRIORITY 2/3 ADDITION
- PRIORITY 2/3 RENOVATION



J.W. LONG ELEMENTARY SCHOOL

# J.W. Long Elementary School



**Enrollment**  
 Current 639 Students  
 Capacity 740 Students

**Age of Facility**  
 Opened in 2003

**Square Footage**  
 Campus Size 96,355 SF  
 SF/Student 151 SF

Facility Condition Index	
Before Improvements	After Improvements
11.16%	

● Good 0-5%   
 ● Fair 6-10%   
 ● Poor 11-30%   
 ● Critical 31-50%   
 ● Divest 51-100%



# J.W. Long Elementary School



Exterior



Common Area



Corridor



Cafeteria



Cafeteria/Stage



Classroom



Computer Lab



Library



Gymnasium

All Images taken by LOA.

SITE PHOTOS  
**J.W. LONG ELEMENTARY**

Terrill Independent School District  
2021 Facility Master Plan



# J.W. Long Elementary School

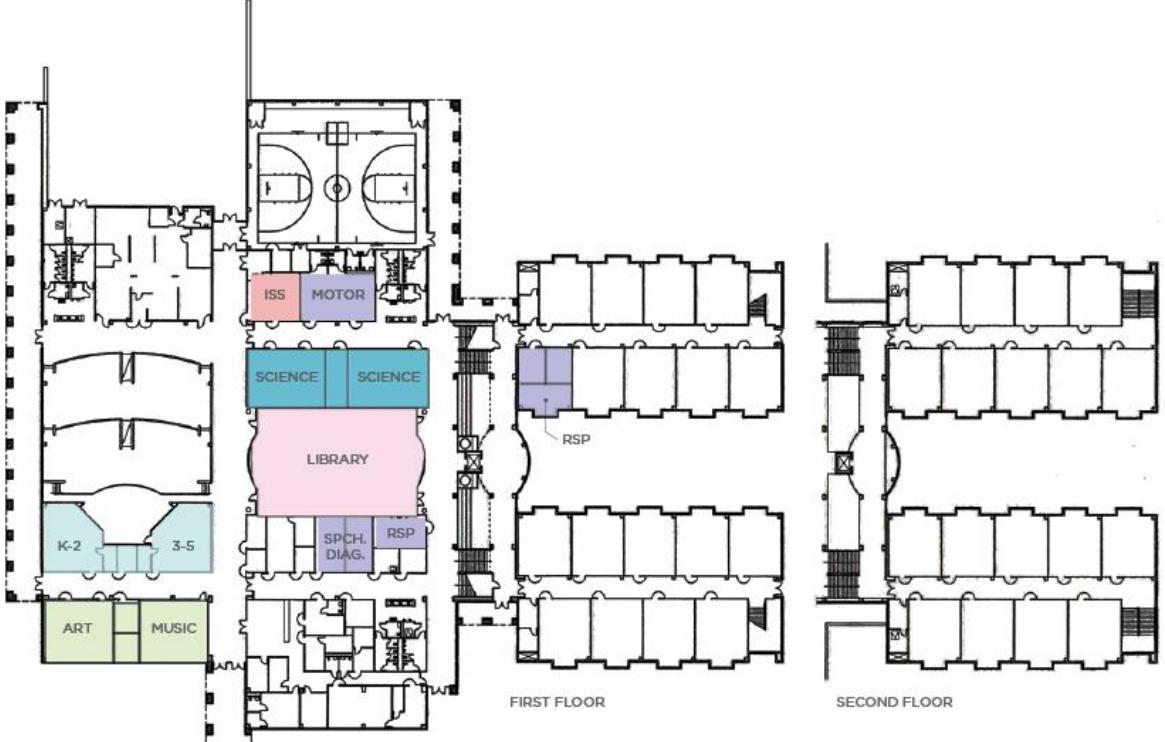


- CLASSROOM
- STEM CLASSROOM
- SPECIAL EDUCATION
- VISUAL/ PERFORMING ARTS
- GYNASIUM
- CAFETERIA & KITCHEN
- LIBRARY/ MEDIA CENTER
- ADMINSTRATION
- BUILDING SUPPORT

FIRST FLOOR			
A001	LIFE SKILLS	600 SF	
A002	K-2 CONNECTIONS	760 SF	
A006	MUSIC	774 SF	
A007	3-5 CONNECTIONS	700 SF	
A011	COUNSELOR	336 SF	
A014	ADMIN	160 SF	
A015	DIAG. AND CONF.	695 SF	
A020	ADMIN	203 SF	
A021	SPECIAL ED.	420 SF	
A022	BOOK ROOM	279 SF	
A023	SPECIAL ED.	420 SF	
A024	SPEECH	302 SF	
A025	SPECIAL ED.	440 SF	
A026	TECHNOLOGY	508 SF	
A027	STEM CLASSROOM	911 SF	
B129	3RD GRADE CLASSROOM	719 SF	
B130	3RD GRADE CLASSROOM	705 SF	
B131	DYSLEXIA	690 SF	
B132	3RD GRADE CLASSROOM	690 SF	
B133	3RD GRADE CLASSROOM	690 SF	
B134	3RD GRADE CLASSROOM	690 SF	
B135	4TH GRADE CLASSROOM	690 SF	
B136	PLC ROOM	690 SF	
B137	4TH GRADE CLASSROOM	690 SF	
B139	KINDERGARTEN	719 SF	
B140	KINDERGARTEN	705 SF	
B141	KINDERGARTEN	690 SF	
B142	KINDERGARTEN	690 SF	
B143	KINDERGARTEN	690 SF	
B144	KINDERGARTEN	690 SF	
B145	1ST GRADE CLASSROOM	690 SF	
B146	1ST GRADE CLASSROOM	690 SF	
B147	1ST GRADE CLASSROOM	690 SF	
CAFETERIA			6543 SF
GYMNASIUM			5719 SF
LIBRARY			2585 SF
COMPUTER LAB "A"			673 SF
COMPUTER LAB "B"			673 SF
SECOND FLOOR			
C229	5TH GRADE CLASSROOM	719 SF	
C230	5TH GRADE CLASSROOM	705 SF	
C231	5TH GRADE CLASSROOM	690 SF	
C232	5TH GRADE CLASSROOM	690 SF	
C233	5TH GRADE CLASSROOM	690 SF	
C234	4TH GRADE CLASSROOM	690 SF	
C235	4TH GRADE CLASSROOM	690 SF	
C236	4TH GRADE CLASSROOM	690 SF	
C237	READING SPECIFIC	690 SF	
C239	2ND GRADE CLASSROOM	719 SF	
C240	2ND GRADE CLASSROOM	705 SF	
C241	2ND GRADE CLASSROOM	690 SF	
C242	2ND GRADE CLASSROOM	690 SF	
C243	2ND GRADE CLASSROOM	690 SF	
C244	2ND GRADE CLASSROOM	690 SF	
C245	1ST GRADE CLASSROOM	690 SF	
C246	1ST GRADE CLASSROOM	690 SF	
C247	1ST GRADE CLASSROOM	690 SF	
C248	1ST GRADE CLASSROOM	690 SF	



# J.W. Long Elementary School



- CLASSROOM
- STEM CLASSROOM
- SPECIAL EDUCATION
- VISUAL/ PERFORMING ARTS
- GYNASIUM
- CAFETERIA & KITCHEN
- LIBRARY/ MEDIA CENTER
- ADMINISTRATION
- BUILDING SUPPORT



# J.W. Long Elementary School



**Priority 1 Improvements:**  
\$6,177,835

**CONSTRUCTION & RENOVATION**  
 Renovate and expand Library  
 Relocate Connections to Improve Music Room Size  
 Playground ReImagination  
 Security Upgrades

**FACILITY IMPROVEMENTS**  
 Replace Fire Alarm System  
 New HVAC Controls  
 Replace HVAC DX Units  
 Provide Crawlspace Ventilation  
 Repair Concrete around Campus

**Priority 2 Improvements:**  
\$3,867,722

**CONSTRUCTION & RENOVATION**  
 Renovate existing spaces to create improved STEM, Art and Special Ed

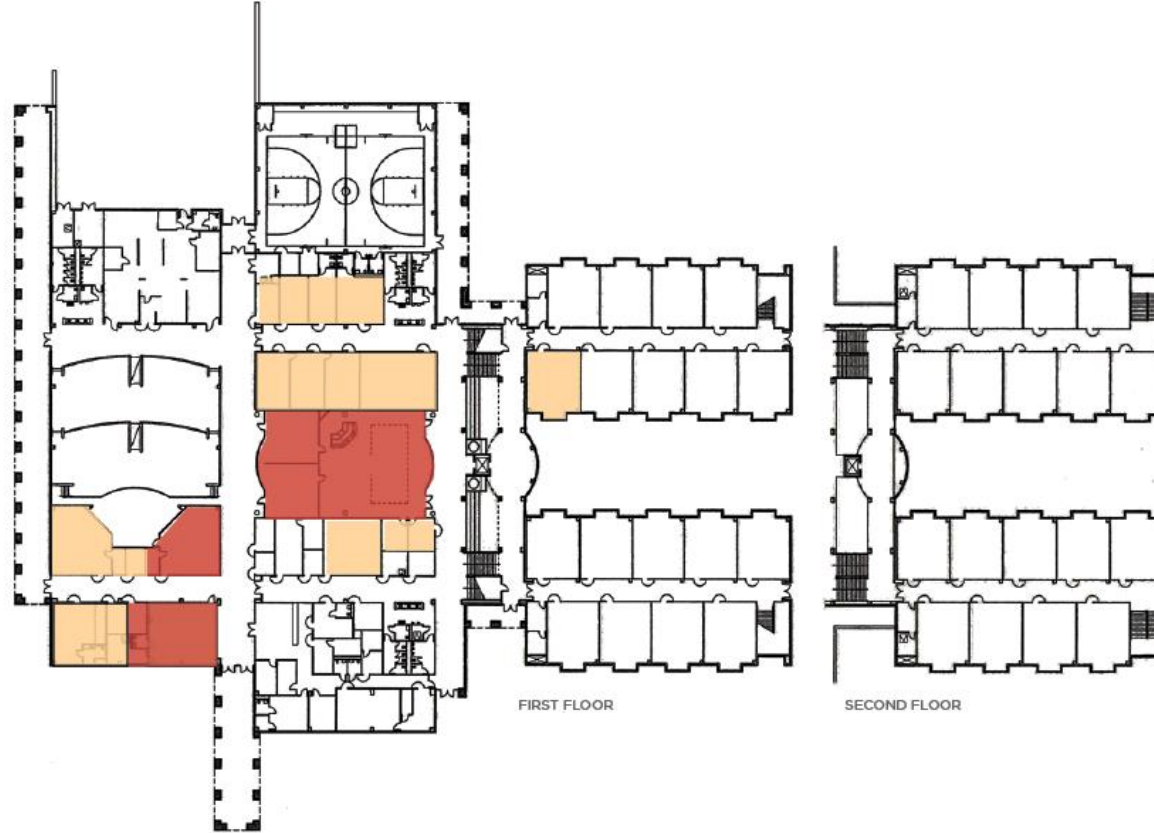
**FACILITY IMPROVEMENTS**  
 Roof Replacement  
 Exterior Enclosure  
 Interior Construction / Finishes  
 Provide new HVAC controls  
 Replace Kitchen Equipment  
 Site Improvements

- OUTDOOR LEARNING/PLAY
- SAFETY AND SECURITY
- PARKING / DROP OFF
- SITE / ATHLETICS





# J.W. Long Elementary School



**Priority 1 Improvements:**  
\$6,177,835

**CONSTRUCTION & RENOVATION**

Renovate and expand Library  
Relocate Connections to  
Improve Music Room Size  
Playground ReImagination  
Security Upgrades

**FACILITY IMPROVEMENTS**

Replace Fire Alarm System  
New HVAC Controls  
Replace HVAC DX Units  
Provide Crawlspace Ventilation  
Repair Concrete around Campus

**Priority 2 Improvements:**  
\$3,867,722

**CONSTRUCTION & RENOVATION**  
Renovate existing spaces to create improved STEM, Art and Special Ed

**FACILITY IMPROVEMENTS**

Roof Replacement  
Exterior Enclosure  
Interior Construction / Finishes  
Provide new HVAC controls  
Replace Kitchen Equipment  
Site Improvements

- PRIORITY 1 ADDITION
- PRIORITY 1 RENOVATION
- PRIORITY 2/3 ADDITION
- PRIORITY 2/3 RENOVATION



**DR. BRUCE WOOD ELEMENTARY SCHOOL**

# Dr. Bruce Wood Elementary School



**Enrollment**  
 Current 544 Students  
 Capacity 670 Students

**Age of Facility**  
 Opened in 1994

**Square Footage**  
 Campus Size 79,214 SF  
 SF/Student 146 SF

Facility Condition Index	
Before Improvements	After Improvements
25.65%	

- Good  
0-5%
- Fair  
6-10%
- Poor  
11-30%
- Critical  
31-50%
- Divest  
51-100%



# Dr. Bruce Wood Elementary School



Library



Library



Cafeteria



Classroom



Classroom



Entry Door



Typical Corridor



Typical Corridor

All images taken by LPA.

SITE PHOTOS  
**DR. BRUCE WOOD ELEMENTARY**

Terrell Independent School District  
2021 Facility Master Plan



# Dr. Bruce Wood Elementary School



- CLASSROOM
- STEM CLASSROOM
- SPECIAL EDUCATION
- VISUAL/ PERFORMING ARTS
- GYMNASIUM
- CAFETERIA & KITCHEN
- LIBRARY/ MEDIA CENTER
- ADMINISTRATION
- BUILDING SUPPORT

A1	ADMIN	325 SF
A2	ADMIN	92 SF
A3	ADMIN	448 SF
A4	ADMIN	100 SF
A5	ADMIN	390 SF
A6	ADMIN	141 SF
A7	ADMIN	460 SF
A8	ADMIN	407 SF
A9	ISS	124 SF
B1	KINDERGARTEN	808 SF
B2	KINDERGARTEN	701 SF
B3	KINDERGARTEN	693 SF
B4	1ST GRADE CLASSROOM	900 SF
B5	1ST GRADE CLASSROOM	730 SF
B6	1ST GRADE CLASSROOM	765 SF
B7	1ST GRADE CLASSROOM	775 SF
B8	1ST GRADE CLASSROOM	751 SF
B9	KINDERGARTEN	672 SF
B10	KINDERGARTEN	709 SF
B11	COMPUTER LAB	910 SF
C1	COMPUTER LAB	937 SF
C2	2ND GRADE CLASSROOM	693 SF
C3	2ND GRADE CLASSROOM	685 SF
C4	2ND GRADE CLASSROOM	685 SF
C5	2ND GRADE CLASSROOM	693 SF
C6	2ND GRADE CLASSROOM	783 SF
C7	BAC	639 SF
D1	MTA	692 SF
D2	SPECIAL ED.	955 SF
D3	3RD GRADE CLASSROOM	913 SF
D4	3RD GRADE CLASSROOM	693 SF
D5	3RD GRADE CLASSROOM	729 SF
D6	3RD GRADE CLASSROOM	706 SF
D7	3RD GRADE CLASSROOM	695 SF
D8	SPECIAL ED.	696 SF
D9	SPECIAL ED.	681 SF
E1	4TH GRADE CLASSROOM	724 SF
E2	4TH GRADE CLASSROOM	707 SF
E3	4TH GRADE CLASSROOM	706 SF
E4	4TH GRADE CLASSROOM	706 SF
E5	5TH GRADE CLASSROOM	706 SF
E6	5TH GRADE CLASSROOM	706 SF
E7	5TH GRADE CLASSROOM	729 SF
E8	5TH GRADE CLASSROOM	693 SF
E9	5TH GRADE CLASSROOM	913 SF
E10	INTERVENTION	955 SF
E11	4TH GRADE CLASSROOM	692 SF
E12	UNKNOWN	442 SF
	GYMNASIUM	6954 SF
	LIBRARY	2015 SF
	BAND HALL	1181 SF
	CHOIR	956 SF
	ART	1011 SF
	CAFETERIA	5594 SF



# Dr. Bruce Wood Elementary School



- CLASSROOM
- STEM CLASSROOM
- SPECIAL EDUCATION
- VISUAL/ PERFORMING ARTS
- GYNASIUM
- CAFETERIA & KITCHEN
- LIBRARY/ MEDIA CENTER
- ADMINISTRATION
- BUILDING SUPPORT



# Dr. Bruce Wood Elementary School



**Priority 1 Improvements:**  
\$7,467,037

**CONSTRUCTION & RENOVATION**  
Renovate existing Library  
Addition to existing Library  
Playground ReImagination  
Security Upgrades

**FACILITY IMPROVEMENTS**  
New Roof  
Replace DX VAV units  
Replace Volume DX Units  
Provide New HVAC Controls  
Increase crawlspace ventilation  
Provide new Fire Sprinkler System

**Priority 2 Improvements:**  
\$2,874,879

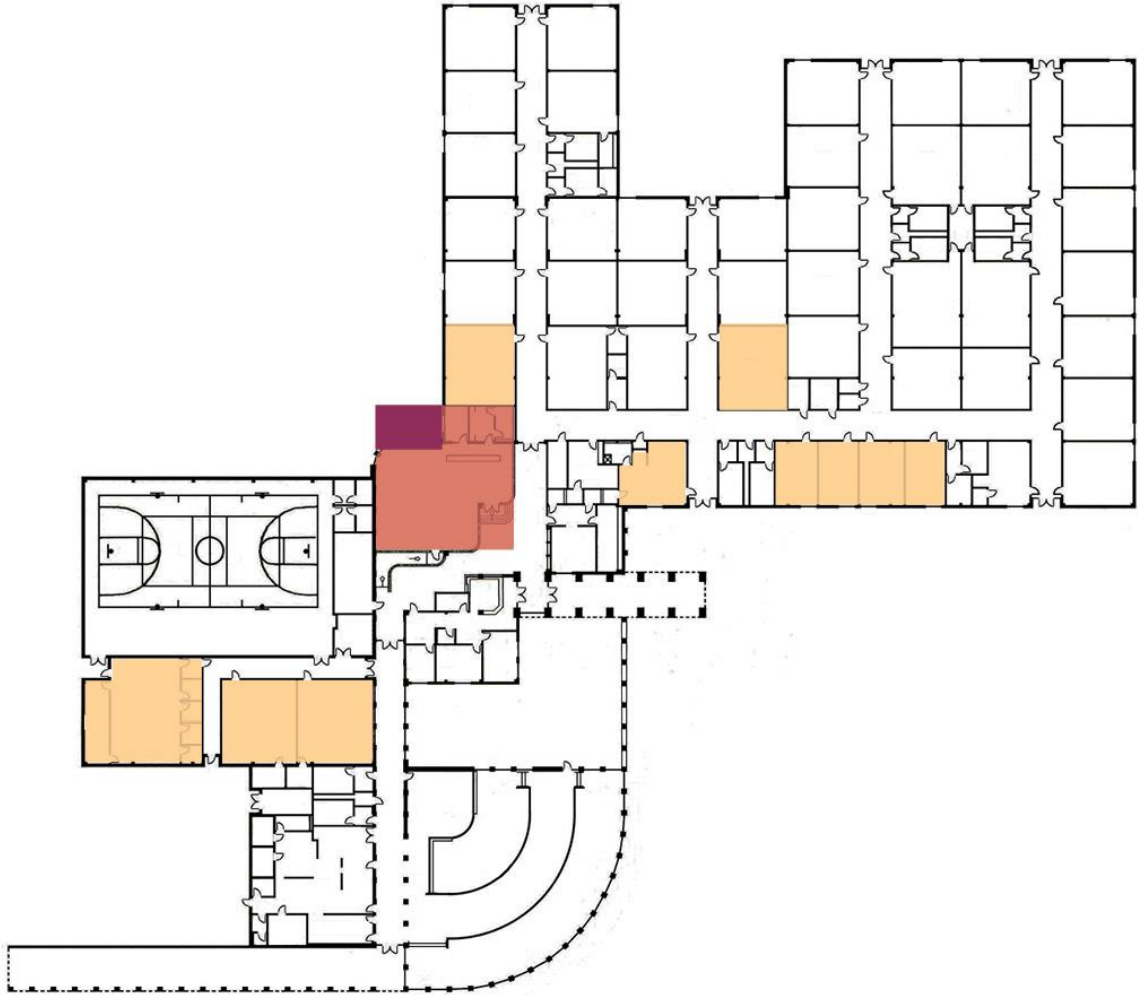
**CONSTRUCTION & RENOVATION**  
Renovate existing Computer to Science  
Renovate existing Fine Arts, SPED, and Administration

**FACILITY IMPROVEMENTS**  
Sidewalk and paving revisions  
Exterior enclosure improvements  
Replace existing kitchen equipment  
Interior Construction improvements  
Interior Finish improvements  
Site Improvements

- PRIORITY 1 ADDITION
- PRIORITY 1 RENOVATION
- PRIORITY 2/3 ADDITION
- PRIORITY 2/3 RENOVATION
- OUTDOOR LEARNING/PLAY
- SAFETY AND SECURITY
- PARKING / DROP OFF
- SITE / ATHLETICS



# Dr. Bruce Wood Elementary School



**Priority 1 Improvements:**  
\$7,467,037

**CONSTRUCTION & RENOVATION**

- Renovate existing Library
- Addition to existing Library
- Playground ReImagination
- Security Upgrades

**FACILITY IMPROVEMENTS**

- New Roof
- Replace DX VAV units
- Replace Volume DX Units
- Provide New HVAC Controls
- Increase crawlspace ventilation
- Provide new Fire Sprinkler System

**Priority 2 Improvements:**  
\$2,874,879

**CONSTRUCTION & RENOVATION**

- Renovate existing Computer to Science
- Renovate existing Fine Arts, SPED, and Administration

**FACILITY IMPROVEMENTS**

- Sidewalk and paving revisions
- Exterior enclosure improvements
- Replace existing kitchen equipment
- Interior Construction improvements
- Interior Finish improvements
- Site Improvements

- PRIORITY 1 ADDITION
- PRIORITY 1 RENOVATION
- PRIORITY 2/3 ADDITION
- PRIORITY 2/3 RENOVATION





NEW ELEMENTARY SCHOOL

800 Students

open 2025-26

# New Elementary School

## Enrollment Growth

The 3 ES exceed total capacity 2026-27 (23 students or 1%)  
Gilbert Willie Sr. ES exceeds capacity beginning 2024-25  
J.W. Long ES exceeds capacity beginning 2026-27  
GLA exceeds capacity beginning 2021-22

## Identified Needs

Years 1-5 Priority: New Elementary School & Land

Build New ES (capacity 800) in south district (open 25-26).  
Redraw boundaries of traditional ES to balance all schools.  
Move GLA to New ES when new ES opens.

## Estimated Costs

New 92,000 SF Elementary School  
Land Acquisition

\$42,156,300



650 ES Students

**GLOBAL LEADERSHIP ACADEMY**

# Global Leadership Academy



**Enrollment**  
 Current 166 Students  
 Capacity 170 Students

**Age of Facility**  
 Opened in 1952

**Square Footage**  
 Campus Size 37,032 SF  
 `SF/Student 223 SF

Facility Condition Index	
Before Improvements	After Improvements
21.02%	

● Good 0-5%   
 ● Fair 6-10%   
 ● Poor 11-30%   
 ● Critical 31-50%   
 ● Divest 51-100%



# Global Leadership Academy



Main Entry



Makerspace



Staff Lounge



Typical Classroom



Restroom



Meal Servicing Area



Gymnasium



Collaboration Space



Admin Office

All images taken by L.D.A.

SITE PHOTOS  
GLOBAL LEADERSHIP ACADEMY

Terrell Independent School District  
2021 Facility Master Plan



# Global Leadership Academy

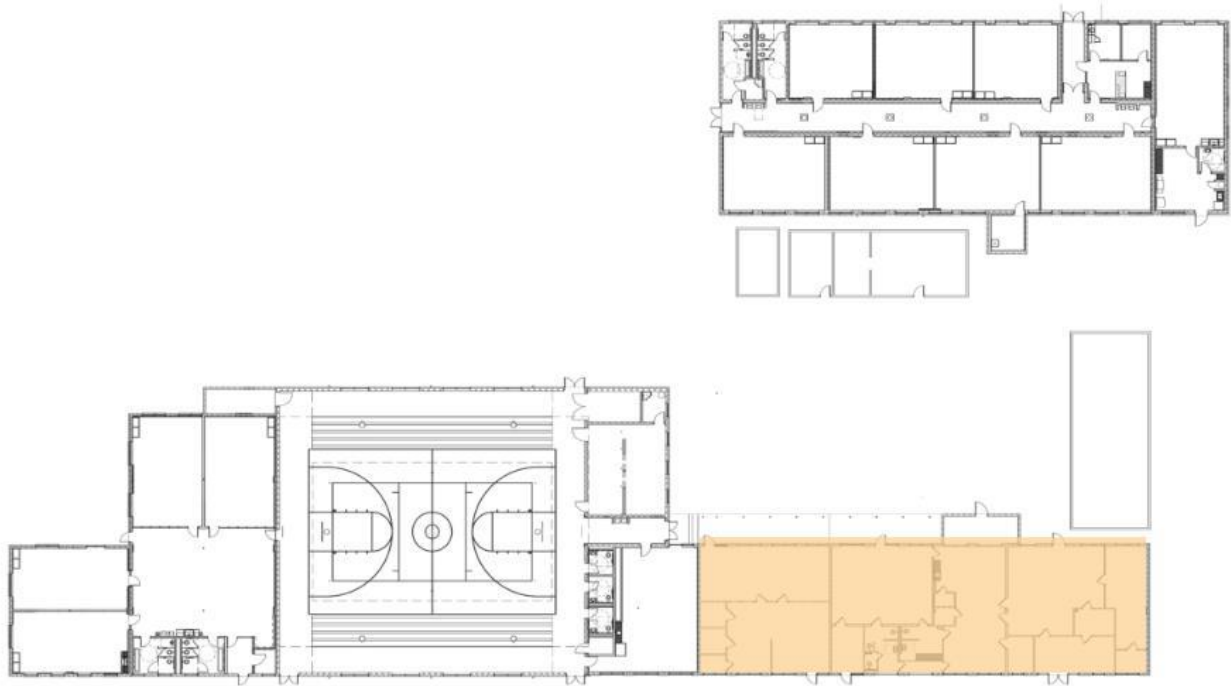


**PROPOSED BUILDING IMPROVEMENTS:**  
B.1 Renovate existing administration area to district custodial spaces

Campus Recommendation to convert to TAEC program



# Global Leadership Academy



**Priority 1 Improvements:**  
\$754,421

**CONSTRUCTION & RENOVATION**  
Repurpose to TAEC & Technology  
Safety & Security Upgrades

**FACILITY IMPROVEMENTS**  
Replace Roofing

**Priority 2 Improvements:**  
\$1,467,930

**CONSTRUCTION & RENOVATION**  
N/A

**FACILITY IMPROVEMENTS**  
Exterior enclosure upgrades  
Minor Interior Finishes  
Replace existing Mechanical  
Provide new Fire Sprinkler System  
Replace existing Kitchen  
Equipment  
Replace Exterior Lighting  
Other Site construction

- PRIORITY 1 ADDITION
- PRIORITY 1 RENOVATION
- PRIORITY 2/3 ADDITION
- PRIORITY 2/3 RENOVATION
- OUTDOOR LEARNING/PLAY
- SAFETY AND SECURITY
- PARKING / DROP OFF
- SITE / ATHLETICS





**THANK YOU!**