

Redistricting of Board Single Member Districts

Redistricting Advisory Committee Meeting

October 26, 2021



WALSH GALLEGOS
TREVINO KYLE & ROBINSON P.C.

Agenda

- ❑ Welcome/ Introductions
- ❑ Elections
- ❑ Review of Redistricting Requirements and Summary
- ❑ Overview of Current Trustee Single Member Districts
- ❑ Overview of Alternative Map Options
- ❑ Discussion of Alternative Map Options
- ❑ Questions

Redistricting in Summary

- ❑ Redistricting is redrawing the boundary lines of the 7 single-member districts from which AISD trustees are elected.
- ❑ This must be done every 10 years as required by Texas Education Code Section 11.052 in order to rebalance the total population of each.
- ❑ There are additional state and federal legal constraints on this process that must be taken into account.
 - Population of the most populous district must not exceed the population of the least populous by more than 10%.
 - Single-member districts must be compact and contiguous.
 - Changes to the electoral maps must not be retrogressive.

Redistricting in Summary

- ❑ Terrell ISD must redistrict no later than the 90th day before the date of the first regular trustee election at which trustees may officially recognize and act on the last preceding federal census. Texas Education Code § 11.052(i).
- ❑ The Board is required to hold May elections.
- ❑ May 7, 2022, elections will first elections at which new plan will be implemented.
- ❑ Board must redistrict by February 6, 2022.

Critical Dates

- ❑ December 13, 2021 Board considers and takes action to adopt new single member district map
- ❑ January 19, 2022 First date to file for place on ballot
- ❑ February 6, 2022 State deadline for New Map in Place
- ❑ February 18, 2022 Last date to file for place on ballot
- ❑ May 7, 2022 District May Election Date

Steps in the Process

- ✓ Understand legal requirements
- ✓ Establish redistricting criteria
- ❑ Conduct demographic analysis of the census data
- ❑ Obtain trustee and community input
- ❑ Draw and redraw alternative plans
- ❑ Obtain public input/comment on plans
- ❑ Adopt a new or revised plan

Criteria for Drawing SMDs

STATUTORY

Total deviation between largest and smallest district at or within 10%

Tex. Educ. Code § 11.052(i)

Near-equal population

Tex. Educ. Code § 11.052(f),(i)

Compact and contiguous

Tex. Educ. Code § 11.052(f)

Avoid splitting county election precincts

Tex. Educ. Code § 11.052(f) *

* Not required of Terrell ISD

FEDERAL

Avoid retrogression (dilution) of minority voting rights.

Make decisions on basis other than race whenever possible to narrowly tailor racial considerations to retrogression issues

Other Considerations

WHEN POSSIBLE OR TO A DEGREE POSSIBLE:

Use easily identifiable boundaries

Maintain communities of interest and keep neighborhoods together

Preserve existing SMD boundaries to a degree possible

Use/account for voting precincts and/or polling places

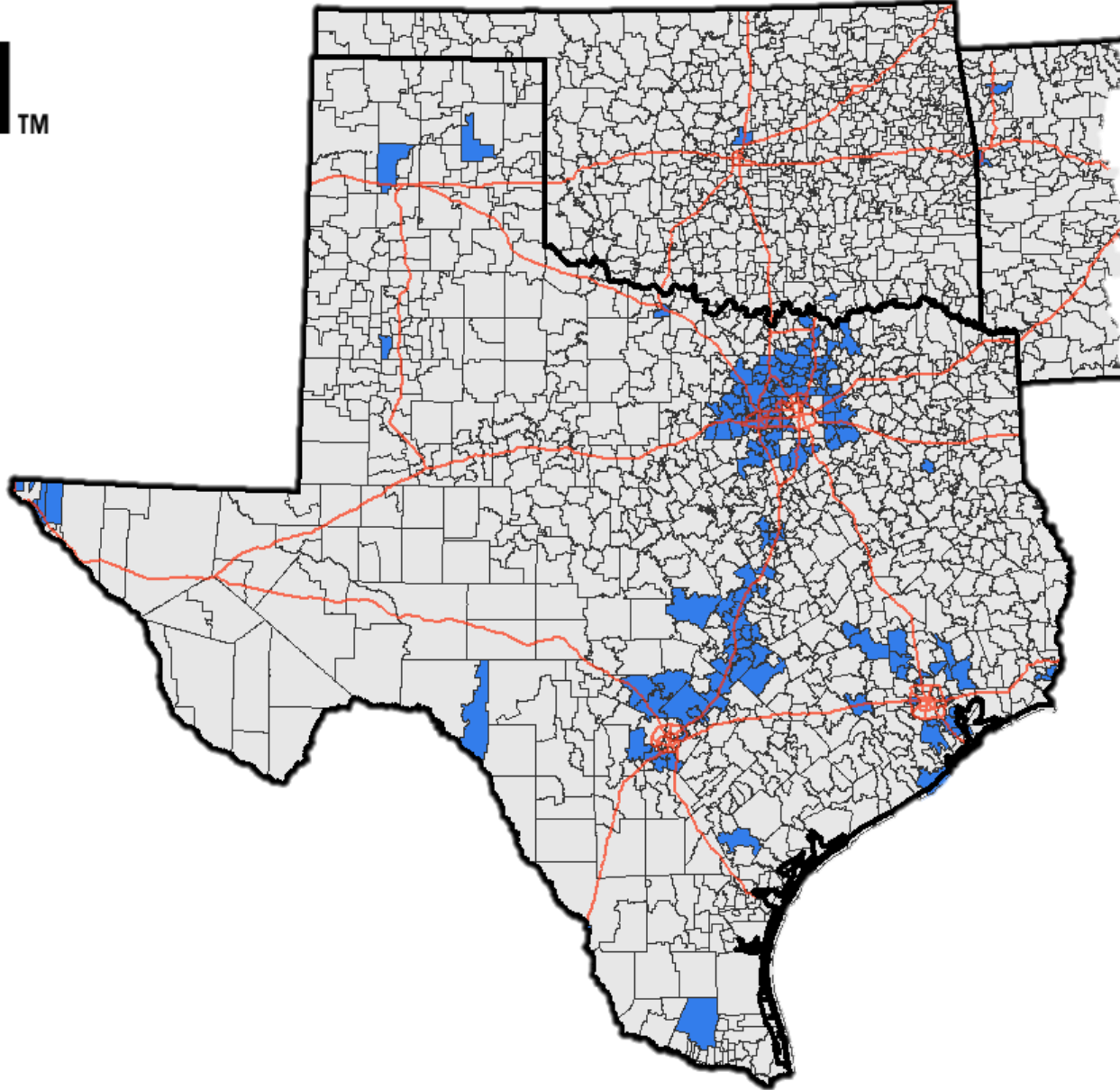
Preserve incumbent-constituency relations



Formerly Templeton Demographics

Supporting clients with
demographic services across
Texas, Oklahoma and Arkansas
since 2006

MICHELLE BOX

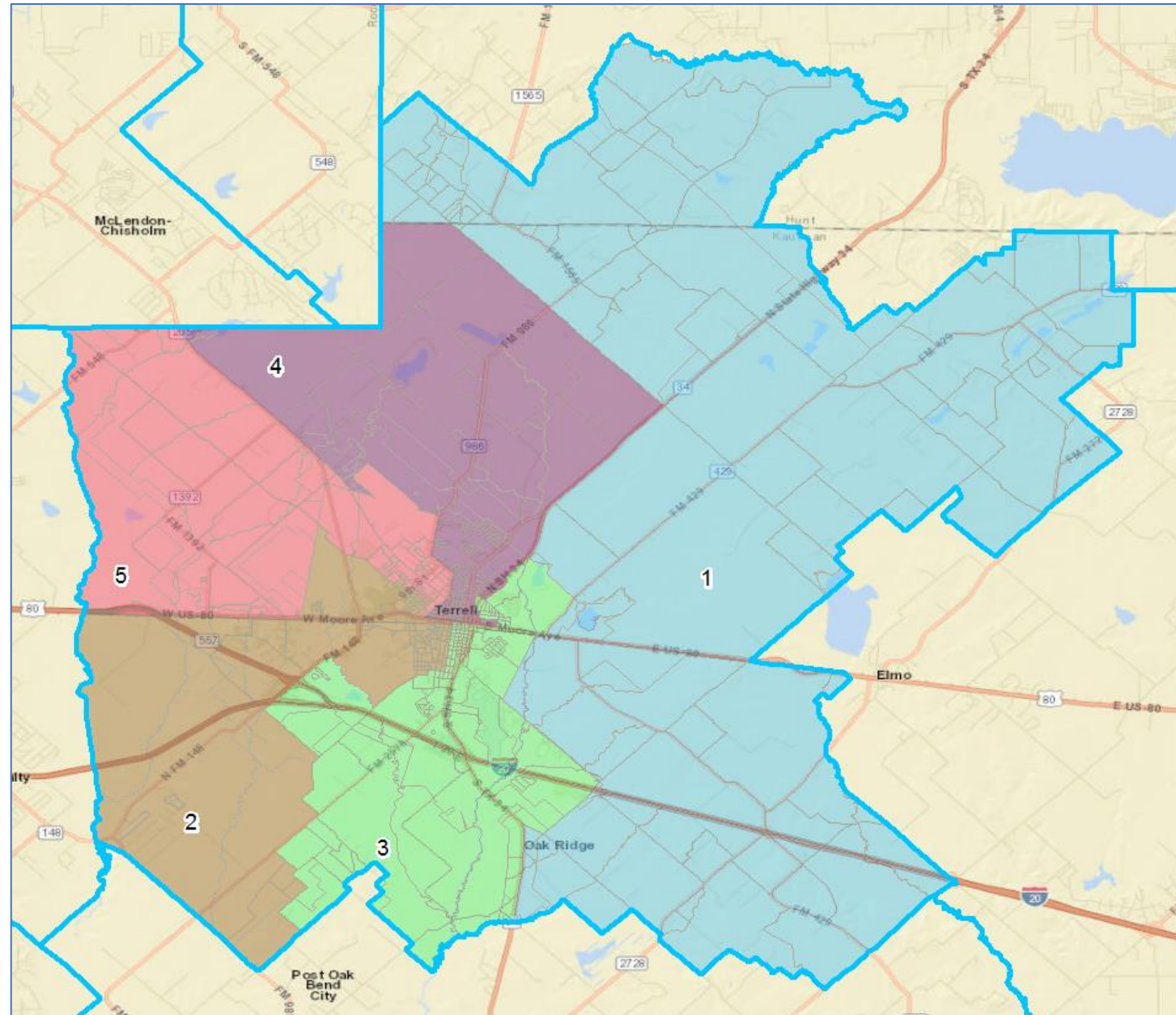


2020 Census Data

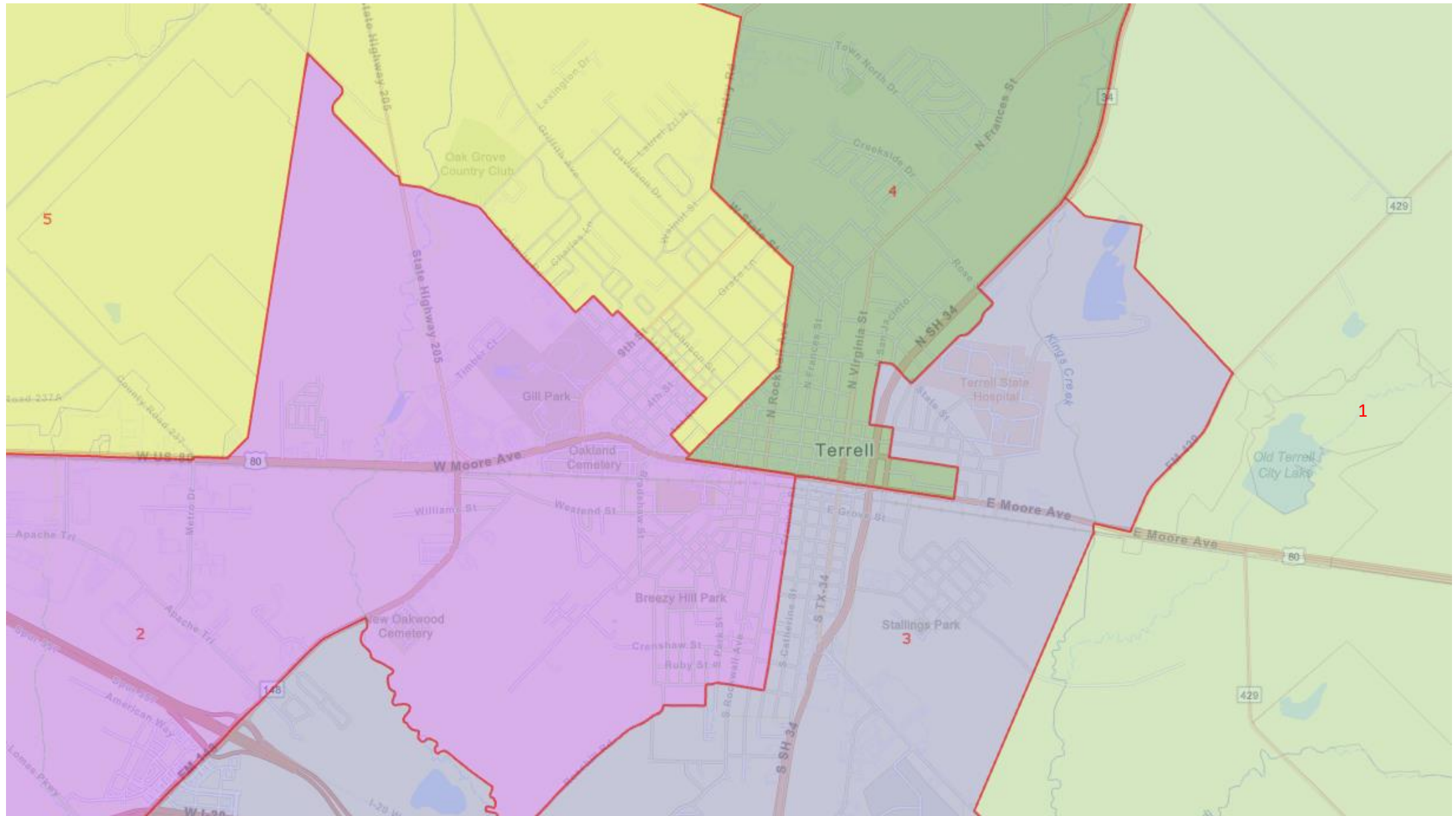


Terrell Independent School District

Current Board of Trustee Single Member Districts



Terrell Independent School District
Current Board of Trustee Single Member Districts



Terrell Independent School District

Board of Trustee 2010 Analysis

2010 CENSUS TOTALS - CURRENT DISTRICT BOUNDARIES

Trustee District	TOTAL POPULATION						TOTAL POPULATION PERCENTAGES					
	Anglo	Asian	Black	Hispanic	Other	Total	Anglo	Asian	Black	Hispanic	Other	Total
1	3,988	12	140	577	131	4,848	82.3%	0.2%	2.9%	11.9%	2.7%	100.0%
2	1,680	27	1,729	1,298	91	4,825	34.8%	0.6%	35.8%	26.9%	1.9%	100.0%
3	2,109	33	1,903	873	86	5,004	42.1%	0.7%	38.0%	17.4%	1.7%	100.0%
4	2,901	32	590	1,650	68	5,241	55.4%	0.6%	11.3%	31.5%	1.3%	100.0%
5	3,242	121	416	1,094	94	4,967	65.3%	2.4%	8.4%	22.0%	1.9%	100.0%
TOTALS	13,920	225	4,778	5,492	470	24,885	55.9%	0.9%	19.2%	22.1%	1.9%	100.0%
5 DIST AVG						4,977	8.6% Percent Differential *					

Trustee District	VOTING AGE POPULATION (VAP) PERCENTAGES					
	Anglo	Asian	Black	Hispanic	Other	Total
1	85.5%	0.3%	2.8%	9.2%	2.3%	100.0%
2	38.5%	0.7%	37.9%	21.8%	1.1%	100.0%
3	46.5%	0.7%	37.6%	14.1%	1.2%	100.0%
4	61.6%	0.5%	11.1%	25.7%	1.1%	100.0%
5	72.2%	2.5%	7.2%	17.1%	1.0%	100.0%
TOTALS	61.2%	0.9%	19.0%	17.4%	1.3%	100.0%

VAP: Voting Age
Population

SOURCE: Total Population and Voting Age Population summarized from 2020 Census PL 94-171 Redistricting Data at the block level.

Citizen Voting Age Population data was extrapolated from 2010 Block Group Data using the 2015-2019 American Community Survey

Trustee District	2010 Housing Totals			
	Total Housing Units	Total Households	Percent Occupied	Household Size
1	1,975	1,812	91.7%	2.68
2	1,860	1,651	88.8%	2.92
3	1,993	1,756	88.1%	2.85
4	1,954	1,752	89.7%	2.99
5	1,991	1,835	92.2%	2.71
TOTALS	9,773	8,806	90.1%	2.83

VAP: Voting Age Population

SOURCE: Total Population and Voting Age Population summarized from 2010 & 2020 Census PL 94-171 Redistricting Data at the block level.

Terrell Independent School District

Board of Trustee 2020 Analysis

2020 CENSUS TOTALS - CURRENT DISTRICT BOUNDARIES												
Trustee District	TOTAL POPULATION						TOTAL POPULATION PERCENTAGES					
	Anglo	Asian	Black	Hispanic	Other	Total	Anglo	Asian	Black	Hispanic	Other	Total
1	3,855	20	165	1,484	246	5,770	66.8%	0.3%	2.9%	25.7%	4.3%	100.0%
2	1,631	26	1,610	1,807	196	5,270	30.9%	0.5%	30.6%	34.3%	3.7%	100.0%
3	1,992	38	2,120	1,320	180	5,650	35.3%	0.7%	37.5%	23.4%	3.2%	100.0%
4	2,808	55	675	2,267	333	6,138	45.7%	0.9%	11.0%	36.9%	5.4%	100.0%
5	3,090	106	368	1,639	229	5,432	56.9%	2.0%	6.8%	30.2%	4.2%	100.0%
TOTALS	13,376	245	4,938	8,517	1,184	28,260	47.3%	0.9%	17.5%	30.1%	4.2%	100.0%
5 DIST AVG						5,652	16.5% Percent Differential *					

Trustee District	VOTING AGE POPULATION (VAP) PERCENTAGES						CITIZEN VOTING AGE POPULATION (CVAP) PERCENTAGES					
	Anglo	Asian	Black	Hispanic	Other	Total	Anglo	Asian	Black	Hispanic	Other	Total
1	72.5%	0.4%	2.9%	20.5%	3.7%	100.0%	85.6%	0.0%	4.0%	8.6%	0.0%	98.2%
2	34.6%	0.6%	32.5%	29.1%	3.2%	100.0%	47.3%	0.5%	34.3%	17.2%	0.0%	99.3%
3	39.9%	0.8%	37.6%	19.2%	2.5%	100.0%	53.6%	0.0%	36.6%	7.4%	0.0%	97.5%
4	51.6%	1.0%	10.9%	31.5%	5.1%	100.0%	62.2%	0.1%	13.9%	19.1%	0.0%	95.2%
5	61.9%	2.4%	7.1%	25.4%	3.3%	100.0%	69.9%	2.6%	5.8%	20.9%	0.0%	99.2%
TOTALS	52.7%	1.0%	17.7%	25.1%	3.6%	100.0%	64.0%	0.7%	18.4%	14.8%	0.0%	97.9%

VAP: Voting Age
Population

SOURCE: Total Population and Voting Age Population summarized from 2020 Census PL 94-171

Redistricting Data at the block level.

Citizen Voting Age Population data was extrapolated from 2010 Block Group Data using the 2015-2019 American Community Survey

Trustee District	2020 Housing Totals			
	Total Housing Units	Total Households	Percent Occupied	Household Size
1	2,270	2,139	94.2%	2.70
2	1,912	1,762	92.2%	2.99
3	2,159	2,032	94.1%	2.78
4	2,122	1,983	93.4%	3.10
5	2,104	1,999	95.0%	2.72
TOTALS	10,567	9,915	93.8%	2.85

VAP: Voting Age Population

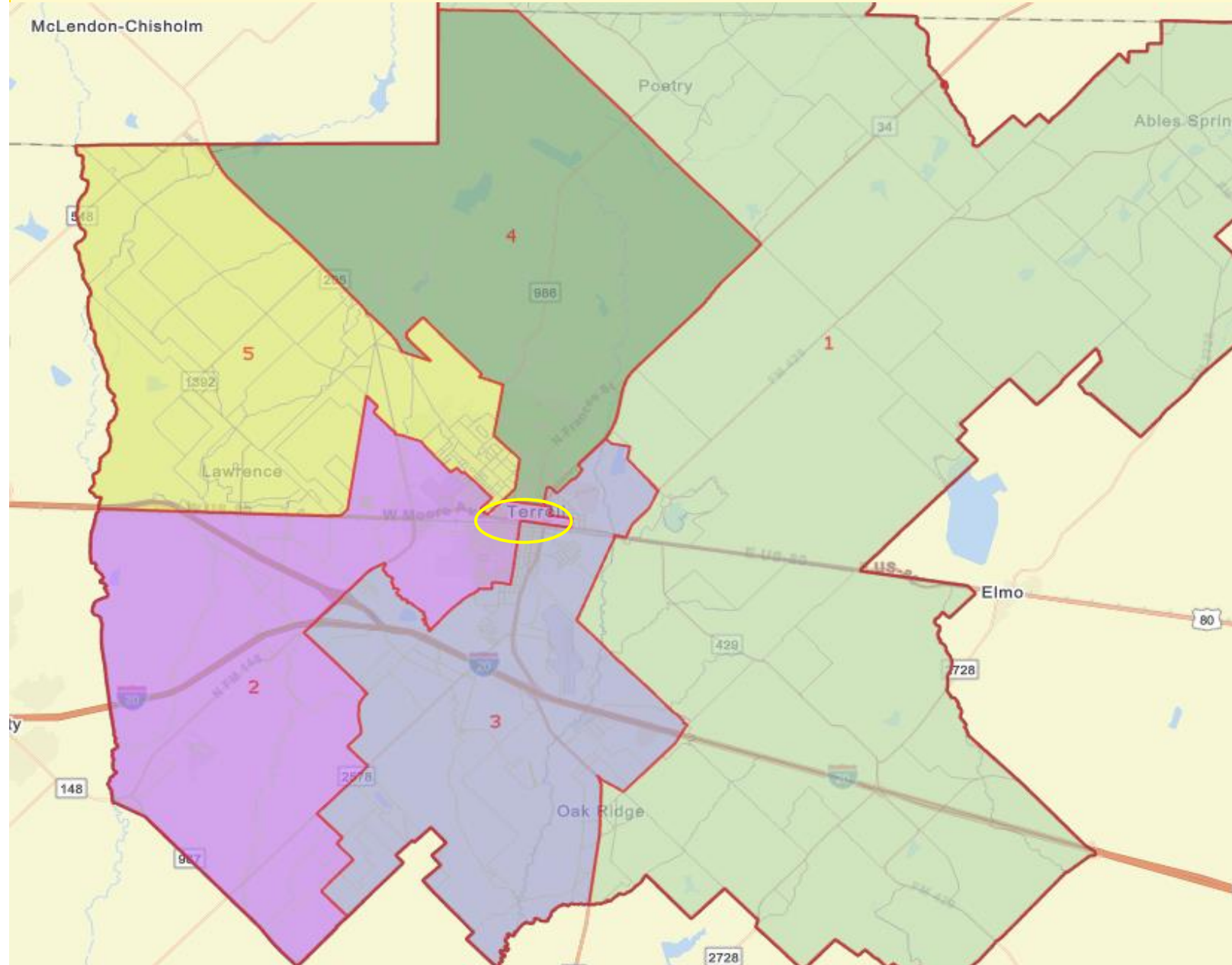
SOURCE: Total Population and Voting Age Population summarized from 2010 & 2020 Census PL 94-171 Redistricting Data at the block level.

Starter Plan 1



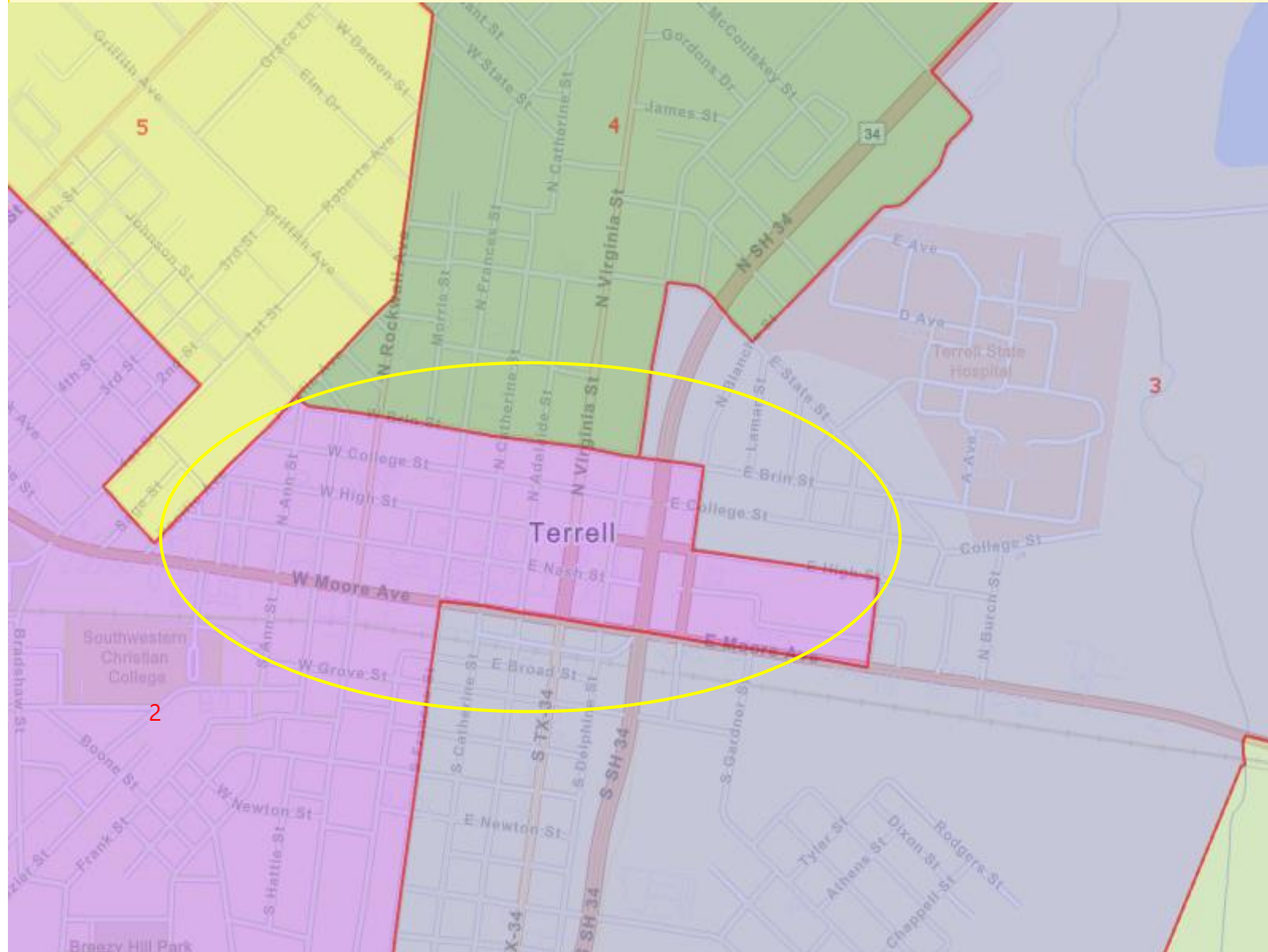
Terrell Independent School District

Starter Plan 1 Board of Trustee Single Member Districts



Terrell Independent School District

Starter Plan 1 Board of Trustee Single Member Districts



Starter Plan 1 - Analysis

2020 CENSUS TOTALS - PLAN 1 DISTRICT BOUNDARIES

Trustee District	TOTAL POPULATION						TOTAL POPULATION PERCENTAGES					
	Anglo	Asian	Black	Hispanic	Other	Total	Anglo	Asian	Black	Hispanic	Other	Total
1	3,855	20	165	1,484	246	5,770	66.8%	0.3%	2.9%	25.7%	4.3%	100.0%
2	1,810	26	1,692	1,971	220	5,719	31.6%	0.5%	29.6%	34.5%	3.8%	100.0%
3	1,992	38	2,120	1,320	180	5,650	35.3%	0.7%	37.5%	23.4%	3.2%	100.0%
4	2,629	55	593	2,103	309	5,689	46.2%	1.0%	10.4%	37.0%	5.4%	100.0%
5	3,090	106	368	1,639	229	5,432	56.9%	2.0%	6.8%	30.2%	4.2%	100.0%
TOTALS	13,376	245	4,938	8,517	1,184	28,260	47.3%	0.9%	17.5%	30.1%	4.2%	100.0%
7 DIST AVG						5,652	Percent Differential					
							6.2% *					

Trustee District	VOTING AGE POPULATION (VAP) PERCENTAGES						CITIZEN VOTING AGE POPULATION (CVAP) PERCENTAGES					
	Anglo	Asian	Black	Hispanic	Other	Total	Anglo	Asian	Black	Hispanic	Other	Total
1	72.5%	0.4%	2.9%	20.5%	3.7%	100.0%	87%	0%	4%	8%	1%	100%
2	35.4%	0.6%	31.3%	29.4%	3.3%	100.0%	49%	1%	33%	17%	1%	100%
3	39.9%	0.8%	37.6%	19.2%	2.5%	100.0%	54%	1%	36%	7%	2%	101%
4	52.2%	1.1%	10.3%	31.4%	5.0%	100.0%	63%	1%	14%	19%	4%	101%
5	61.9%	2.4%	7.1%	25.4%	3.3%	100.0%	71%	2%	6%	21%	1%	100%
TOTALS	52.7%	1.0%	17.7%	25.1%	3.6%	100.0%	64.9%	1.0%	18.3%	14.4%	1.8%	100.4%

VAP: Voting Age Population

SOURCE: Total Population and Voting Age Population summarized from 2010 & 2020

Census PL 94-171 Redistricting Data at the block level.

2020 Census & Plan 1 Change Analysis

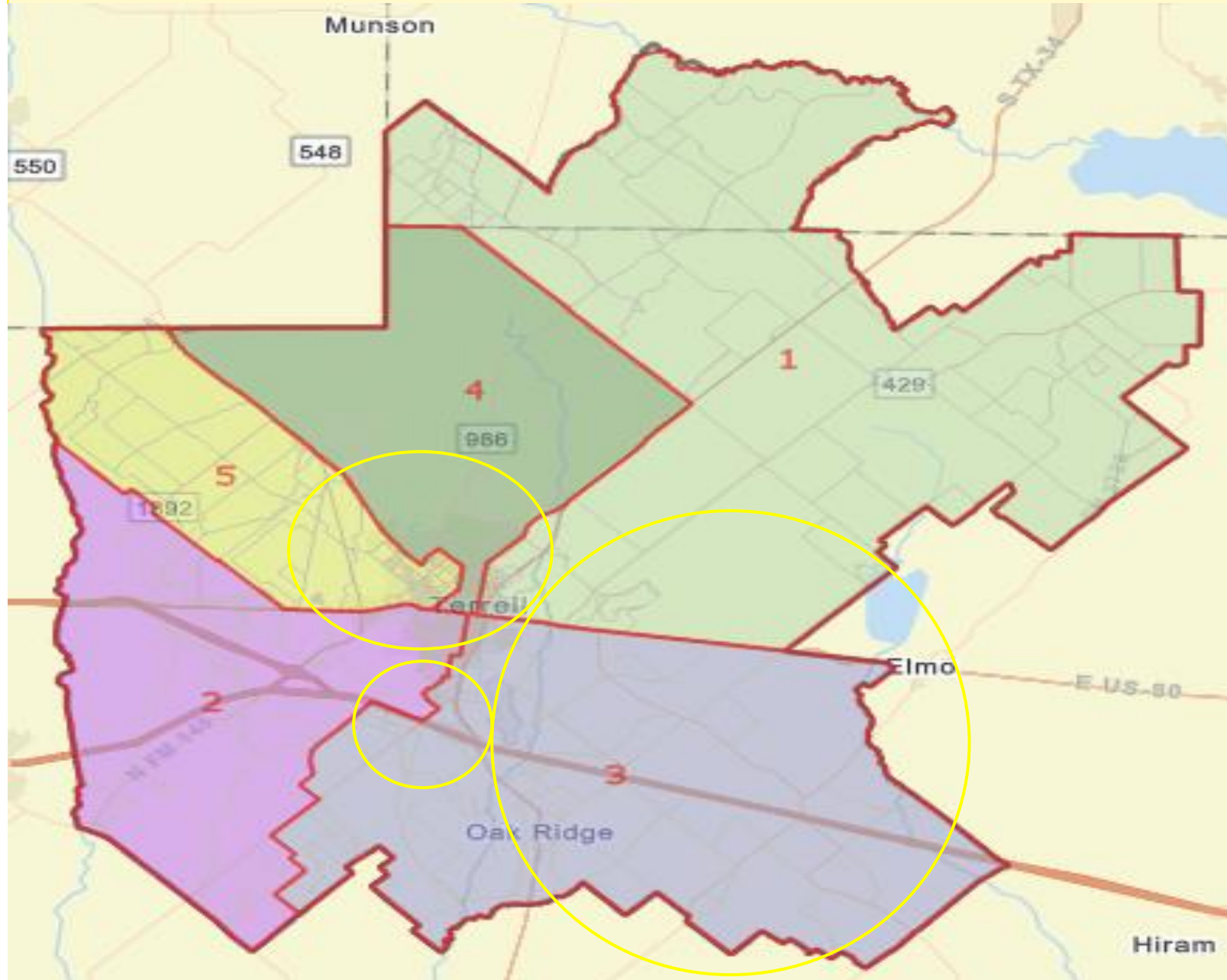
TERRELL INDEPENDENT SCHOOL DISTRICT												
2020 Current to Plan 1 CHANGE IN DEMOGRAPHICS												
Trustee District	TOTAL POPULATION						TOTAL POPULATION PERCENTAGES					
	Anglo	Asian	Black	Hispanic	Other	Total	Anglo	Asian	Black	Hispanic	Other	Total
1	0	0	0	0	0	0	0.0%	0.0%	0.0%	0.0%	0.0%	0.0%
2	179	0	82	164	24	449	0.7%	0.0%	-1.0%	0.2%	0.1%	0.0%
3	0	0	0	0	0	0	0.0%	0.0%	0.0%	0.0%	0.0%	0.0%
4	-179	0	-82	-164	-24	-449	0.5%	0.1%	-0.6%	0.0%	0.0%	0.0%
5	0	0	0	0	0	0	0.0%	0.0%	0.0%	0.0%	0.0%	0.0%

Trustee District	2020 Current to Plan 1 Change In VAP PERCENTAGES					2020 Current to Plan 1 Change In CVAP PERCENTAGES				
	Anglo	Asian	Black	Hispanic	Other	Anglo	Asian	Black	Hispanic	Other
1	0.0%	0.0%	0.0%	0.0%	0.0%	0.0%	0.0%	0.0%	0.0%	0.0%
2	0.8%	-0.1%	-1.2%	0.3%	0.2%	1.0%	0.0%	-1.2%	0.1%	0.2%
3	0.0%	0.0%	0.0%	0.0%	0.0%	0.0%	0.0%	0.0%	0.0%	0.0%
4	0.6%	0.1%	-0.6%	-0.1%	0.0%	-0.2%	0.0%	0.2%	0.0%	0.0%
5	0.0%	0.0%	0.0%	0.0%	0.0%	0.0%	0.0%	0.0%	0.0%	0.0%

Starter Plan 2

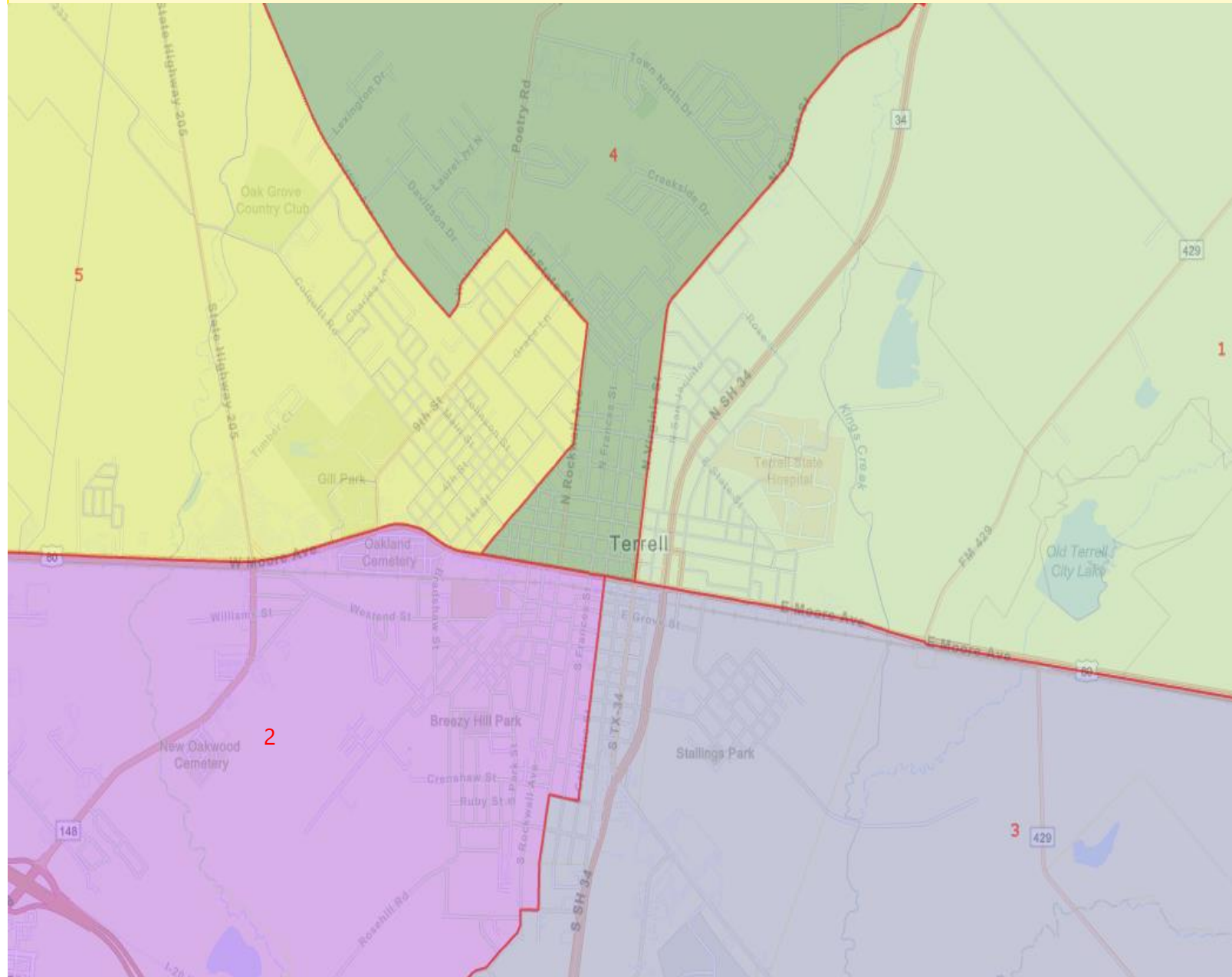


Terrell Independent School District Starter Plan 2 Board of Trustee Single Member Districts



Terrell Independent School District

Starter Plan 2 Board of Trustee Single Member Districts



Starter Plan 2 - Analysis

2020 CENSUS TOTALS - PLAN 2 DISTRICT BOUNDARIES

Trustee District	TOTAL POPULATION						TOTAL POPULATION PERCENTAGES					
	Anglo	Asian	Black	Hispanic	Other	Total	Anglo	Asian	Black	Hispanic	Other	Total
1	3,243	24	415	1,920	236	5,838	55.5%	0.4%	7.1%	32.9%	4.0%	100.0%
2	1,466	89	2,144	1,589	220	5,508	26.6%	1.6%	38.9%	28.8%	4.0%	100.0%
3	2,648	32	1,252	1,330	186	5,448	48.6%	0.6%	23.0%	24.4%	3.4%	100.0%
4	3,121	60	595	1,666	320	5,762	54.2%	1.0%	10.3%	28.9%	5.6%	100.0%
5	2,898	40	532	2,012	222	5,704	50.8%	0.7%	9.3%	35.3%	3.9%	100.0%
TOTALS	13,376	245	4,938	8,517	1,184	28,260	47.3%	0.9%	17.5%	30.1%	4.2%	100.0%

**7 DIST
AVG**

5,652

Percent Differential

7.2% *

Trustee District	VOTING AGE POPULATION (VAP) PERCENTAGES						CITIZEN VOTING AGE POPULATION (CVAP) PERCENTAGES					
	Anglo	Asian	Black	Hispanic	Other	Total	Anglo	Asian	Black	Hispanic	Other	Total
1	61.2%	0.4%	7.3%	27.5%	3.6%	100.0%	80%	0%	4%	14%	2%	100%
2	29.3%	2.2%	41.0%	24.3%	3.3%	100.0%	43%	2%	43%	11%	1%	100%
3	54.6%	0.7%	22.7%	19.5%	2.6%	100.0%	65%	1%	27%	7%	2%	101%
4	60.0%	1.1%	10.1%	23.7%	5.1%	100.0%	71%	1%	11%	14%	4%	101%
5	56.2%	0.8%	9.5%	30.2%	3.2%	100.0%	66%	1%	8%	25%	1%	100%
TOTALS	52.7%	1.0%	17.7%	25.1%	3.6%	100.0%	64.9%	1.0%	18.3%	14.4%	1.8%	100.4%

VAP: Voting Age Population

SOURCE: Total Population and Voting Age Population summarized from 2010 & 2020

Census PL 94-171 Redistricting Data at the block level.

2020 Census & Plan 2 Change Analysis

TERRELL INDEPENDENT SCHOOL DISTRICT												
2020 Current to Plan 2 CHANGE IN DEMOGRAPHICS												
Trustee District	TOTAL POPULATION						TOTAL POPULATION PERCENTAGES					
	Anglo	Asian	Black	Hispanic	Other	Total	Anglo	Asian	Black	Hispanic	Other	Total
1	-612	4	250	436	-10	68	-11.3%	0.1%	4.2%	7.2%	-0.2%	0.0%
2	-165	63	534	-218	24	238	-4.3%	1.1%	8.4%	-5.4%	0.3%	0.0%
3	656	-6	-868	10	6	-202	13.3%	-0.1%	-14.5%	1.0%	0.2%	0.0%
4	313	5	-80	-601	-13	-376	8.4%	0.1%	-0.7%	-8.0%	0.1%	0.0%
5	-192	-66	164	373	-7	272	-6.1%	-1.3%	2.6%	5.1%	-0.3%	0.0%

Trustee District	2020 Current to Plan 2 Change In VAP PERCENTAGES					2020 Current to Plan 2 Change In CVAP PERCENTAGES				
	Anglo	Asian	Black	Hispanic	Other	Anglo	Asian	Black	Hispanic	Other
1	-11.3%	0.0%	4.5%	6.9%	-0.1%	-6.6%	0.0%	0.1%	6.1%	0.4%
2	-5.4%	1.6%	8.5%	-4.9%	0.2%	-4.9%	2.2%	8.3%	-6.3%	0.9%
3	14.6%	-0.1%	-14.9%	0.3%	0.1%	10.4%	0.0%	-9.1%	-0.5%	-0.8%
4	8.5%	0.1%	-0.7%	-7.8%	0.0%	7.7%	0.0%	-2.7%	-4.3%	-0.7%
5	-5.7%	-1.5%	2.4%	4.8%	-0.1%	-4.5%	-2.1%	2.1%	4.4%	0.2%

Upcoming Meeting Dates



RAC Meetings

- ❑ October 12, 2021
 - Address redistricting process
 - Take questions regarding process
 - Address census data and change analysis
 - Discuss current boundaries and possible changes
 - Elect chairperson and secretary
- ❑ October 26, 2021
 - Present and discuss baseline map options
 - Obtain feedback for further revisions
- ❑ November 9, 2021 and December 7, 2021
 - Present and discuss updated map
 - Consensus on a recommended revised map

**Laura Rodriguez
McLean**
lmclean@wabsa.com



WALSH GALLEGOS
TREVIÑO KYLE & ROBINSON P.C.

Crestview Towers
105 Decker Court
Suite 700
Irving, TX 75062
(214) 574-8800

© 2021