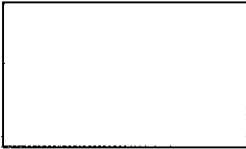


**Simple Solutions CC Math 2**  
**Title: Second Grade Blizzard Bag #1**

Name: \_\_\_\_\_

Class: \_\_\_\_\_

<p>1.</p> <p>What numbers are missing from the list?</p> <p>____, 400, ____, 600, 700</p>	<p>2.NBT.2</p>
<p>2.</p> <p>Which unit would be best for measuring the height of a chair?</p> <p>A) feet B) miles C) millimeters</p>	<p>2.MD.2</p>
<p>3.</p> <p>There is a coat rack standing in the hallway. Ryan claims that it is 6 feet tall. Ellie says that it is 2 yards tall. Both measurements are correct. Why is Ryan's number larger?</p>	<p>2.MD.2</p>
<p>4.</p> <p>Max measured a tablet in feet and Julie measured the same tablet in inches. Which two measurements seem likely?</p>	<p>A) 12 inches/1 foot</p> <p>B) 2 inches/20 feet</p> <p>2.MD.2</p>

<p>5.</p> <p>What number comes just before 400?</p>	<p>2.NBT.2</p>
<p>6.</p> <p>Which unit would be best for measuring the width of a dollar bill?</p> <p>A) yards B) feet C) inches</p>	<p>2.MD.2</p>
<p>7.</p> <p>Count by fives.</p>	<p>55, 60, _____, _____, 75</p> <p>2.NBT.2</p>
<p>8.</p> <p>Is this shape a quadrilateral?</p> 	<p>2.G.1</p>

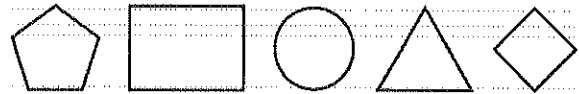
9.

Draw 2 quadrilaterals.

2.G.1

10.

Circle the triangle.



2.G.1

11.

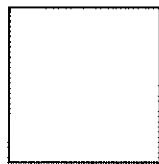
Count by 100s.

400, 500, \_\_\_\_\_, \_\_\_\_\_

2.NBT.2

12.

Is this figure a cube?



2.G.1

# Simple Solutions CC Math 2

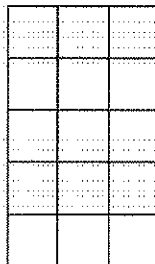
## Title: Second Grade Blizzard Bag #2

Name: \_\_\_\_\_

Class: \_\_\_\_\_

1.

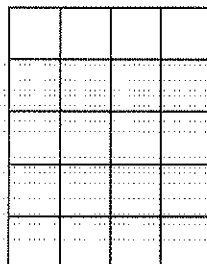
The rectangle in the answer box has 5 same-size rows and 3 same-size columns. How many square units are there?



2.G.2

2.

The rectangle in the answer box has 5 same-size rows and 4 same-size columns. How many square units are there?



2.G.2

3.

Order these numbers from greatest to least.

214 276 634 863

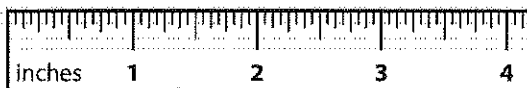
2.NBT.4

4.

Write your answers in inches.

F \_\_\_\_\_

G \_\_\_\_\_



• How long is line F? \_\_\_\_\_

• How long is line G? \_\_\_\_\_

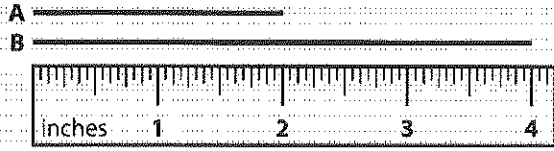
• How much shorter is line F than line G? \_\_\_\_\_

• What is the sum of the two lengths? \_\_\_\_\_

2.MD.4

5.

Write your answers in inches.

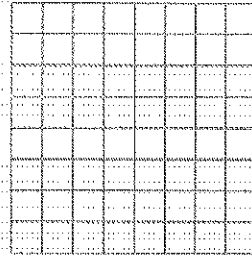


- How long is line A? \_\_\_\_\_
- How long is line B? \_\_\_\_\_
- How much shorter is line A than line B? \_\_\_\_\_
- What is the sum of the two lengths? \_\_\_\_\_

2.MD.4

6.

Draw a rectangle that has four equal rows and two equal columns. How many square units are in the rectangle?



2.G.2

7.

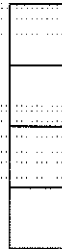
Order these numbers from least to greatest.

860 698 223 257

2.NBT.4

8.

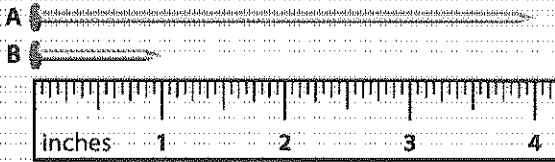
The rectangle in the answer box has 4 rows and 1 column. How many square units are there?



2.G.2

9.

Write your answers in inches.



- How long is nail A? \_\_\_\_\_
- How long is nail B? \_\_\_\_\_
- How much longer is nail A than nail B? \_\_\_\_\_
- What is the sum of the two lengths? \_\_\_\_\_

2.MD.4

10.

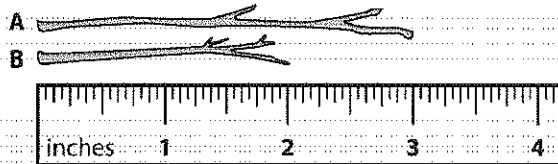
Order these numbers from greatest to least.

812 398 339 11

2.NBT.4

11.

Write your answers in inches.



- How long is branch A? \_\_\_\_\_
- How long is branch B? \_\_\_\_\_
- How much shorter is branch B than branch A? \_\_\_\_\_

2.MD.4

12.

Fill in the sign to make this sentence true.

898 ○ 998

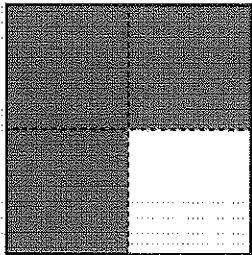
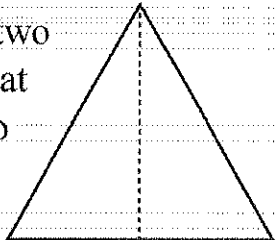
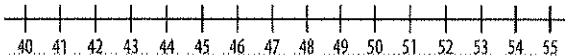
2.NBT.4

# Simple Solutions CC Math 2

## Title: Second Grade Blizzard Bag #3

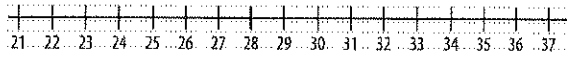
Name: \_\_\_\_\_

Class: \_\_\_\_\_

<p>1.</p> <p><math>37 + 61 + 32 = ?</math></p>	<p>2.NBT.6</p>
<p>2.</p> <p>How many parts out of 4 equal parts are shaded?</p> 	<p>2.G.3</p>
<p>3.</p> <p>This triangle has two equal shares. What do we call the two shares?</p> 	<p>2.G.3</p>
<p>4.</p> <p>Use the number line to subtract <math>55 - 12</math>.</p> 	<p>Start at _____ and move _____ spaces to the left.</p> <p>The difference is _____.</p> <p>2.MD.6</p>

5.

Use the number line to add  $22 + 13$ .



Start at \_\_\_\_\_ and move \_\_\_\_\_ spaces to the right.

The sum is \_\_\_\_\_.

2.MD.6

6.

$$34 + 23 + 25 = ?$$

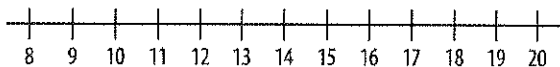
2.NBT.6

7.

$$44 + 45 + 17 + 49 = ?$$

2.NBT.6

8. Use the number line to subtract  $18 - 7$ .



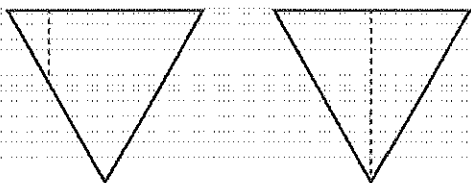
Start at \_\_\_\_\_ and move \_\_\_\_\_ spaces to the left.

The difference is \_\_\_\_\_.

2.MD.6



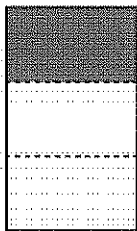
9. Which shape is divided exactly in half? Draw it in the box.



2.G.3

10.

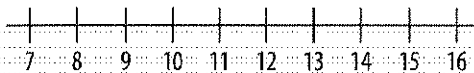
What do we call the part of this shape that is shaded?



2.G.3

11.

Use the number line to subtract  $14 - 5$ .



Start at \_\_\_\_\_ and move \_\_\_\_\_ spaces to the left.

The difference is \_\_\_\_\_.

2.MD.6

12.

$$74 + 84 + 57 = ?$$

2.NBT.6