

# BRYAN ISD BUILD

**EMPOWERING STUDENTS, EMPOWERING COMMUNITY**



# What is the Bryan ISD Build?



## BRYAN ISD BUILD

EMPOWERING STUDENTS, EMPOWERING COMMUNITY

Bryan ISD will come together as a district to build a house for a local family through Habitat for Humanity.



Students, Staff & Community members can be part of the fundraising and also partake in the construction of the home.

An opportunity to witness and demonstrate the Bryan ISD's Essential 8 character traits.



# How will Bryan ISD students and staff participate?



- Involve all schools, all grade levels
- Participation in age-appropriate, campus-based activities to raise funds and support of the project
- Rally Community Involvement
  - PTOs, Booster Clubs, Community Service Organizations
- Help Build the House as a Habitat for Humanity Volunteer
- Incorporate



# What is Habitat for Humanity?

- Provides safe, decent and affordable housing for hard-working, low-income families through homeownership.
- Habitat homes are not free.
- The family must have a need; must have the ability to pay; must be willing to work and partner with Habitat.
- Families receive a 30-year 0% interest home loan from B/CS Habitat, which makes these homes affordable.
- It is truly a hand up, not a hand out.



# Bryan ISD Build Design Team

- Representation from Bryan ISD campuses and programs
- Central office staff
- BCS Habitat for Humanity
- Student Ambassadors (Coming Soon)





# BRYAN ISD BUILD

Empowering Students, Empowering Community



Big Community Kickoff



Fundraising and Community Awareness



Building the House



Home Dedication

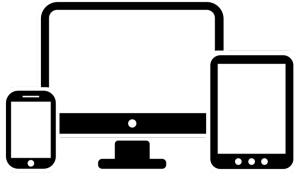


## Next steps for district/campus leaders

- Consider your campus' fall activities and events and how you could incorporate Bryan ISD Build.
- Be on the lookout for more information from Bryan ISD and members of the project team.



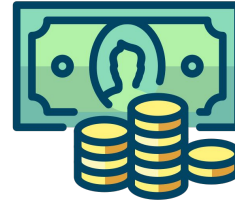
# Coming Soon!



**Project Webpage**  
Details  
FAQ



**Project Launch**  
Internal (Staff) Launch  
Community Kickoff



**Donation Information**  
How to Donate  
Online/Digital Options



**Classroom Connections**  
Learning Opportunities  
Essential 8



# BRYAN ISD BUILD

**EMPOWERING STUDENTS, EMPOWERING COMMUNITY**

