

Vision: The Mountain View-Birch Tree School District is two communities working as one to develop caring and responsible citizens.



Mission: Our mission is to empower and inspire all students to be successful before and after graduation. We strive to improve the quality of life through rigor, relevance, and relationships.

Mountain View-Birch Tree R-III School District

1054 Old Highway 60, Mountain View, MO 65548

417-934-5408

Fax 417-934-5404

To: Board of Education Members

From: Dr. Don Christensen, Superintendent

Re: Board Meeting Materials

Date Printed: March 3, 2023

Board Meeting Date: March 9, 2023

Enclosed please find the following Board packet information:

1. School Board Meeting Agenda
2. Explanation of School Board Meeting Agenda Items
3. Minutes of Previous Meeting
4. Copy of Monthly Bills
5. Monthly Financial Report
6. Copies Proposed School Board Policies from MSBA
7. Informational Sheet Regarding "Improving Ventilation Grant in Missouri Schools"
8. APR Scores: District and Building-Level
9. Newspaper Article: "A Fable, A Moral, and a Call to Action"
10. Administrative Reports

SUPERINTENDENT'S OFFICE

Dr. Don Christensen - Superintendent
Lanna Tharp - Asst. Superintendent
Susan Smotherman - Supt. Secretary
Tressa Henry - Accountant
Rhonda Henry - Bookkeeper
(417) 934-5408/5409

LIBERTY HIGH SCHOOL

John Daniels - Principal
Tammy Heiney - Asst. Principal
Eli Ernst - Athletic Director
(417) 934-2020

LIBERTY MIDDLE SCHOOL

Ryan Chowning - Principal 6-8
Eli Ernst - Asst. Principal
(417) 934-5412

SPECIAL SERVICES

Barbara Medina- Director
(417) 934-2020

MTN VIEW ELEMENTARY

Angie Jester - Principal
Wade Marriott - Asst. Principal
(417) 934-2550

BIRCH TREE ELEMENTARY

Paula Renshaw - Principal
(573) 292-3106

MOUNTAIN VIEW-BIRCH TREE R-III SCHOOL DISTRICT
REGULAR SCHOOL BOARD MEETING
Thursday, March 9, 2023
6:00 P.M.
Liberty High School Media Center

- I. Determination of Quorum/Call Meeting to Order**
- II. Pledge of Allegiance:** Mr. Daniels
- III. Public Comment:** The Board will listen to the statement of any person speaking his/her opinion on any given agenda item.
- IV. Approval of Consent Agenda Items**
 - A. Minutes of Previous Meeting: Approval of last month's board meeting minutes
 - B. Approval of Payment of Monthly Bills.
 - C. Monthly Administrative/Principal Reports
- V. Adoption of Agenda**
- VI. Student Time**
 - A. High School Student Time
- VII. Committee Reports**
 - A. MSBA Delegate Report/Training and Meetings - - MSBA Board Delegate
- VIII. Old Business**
 - A. Soccer Program
- IX. New Business**
 - A. Items extracted from consent agenda
 - B. Exceptions to monthly bills: Payment related to individuals related to Board Members
 - C. Monthly Financial Report
 - D. School Board Policy Proposals
 - E. Improving Ventilation in Missouri Schools Grant
 - F. Graduation Date for 2023-2024 School Year
 - G. Annual Performance Report Scores
- X. Other Business**
 - A. None
- XI. Monthly Program Report/Review**
 - A. None
- XII. Administrators' Reports**
 - A. Principals report on each of their buildings
- XIII. Move To Closed Session, Closed Vote, Closed Record**

The Board hereby gives notice to meeting in Closed Session to consider the following items pursuant to RSMo 610.021 (1), (3), (9), (13), (14)
- XIV. Return to regular session**
- XV. Adjourn**

MOUNTAIN VIEW-BIRCH TREE R-III BOARD OF EDUCATION MEETING

Explanation of Agenda Items

REGULAR SESSION

Thursday, March 9, 2023

6:00 P.M.

Liberty High School Media Center

The information found on the following pages is provided for the Board Members to have advanced preparation to assist in making decisions and voting on issues relating to the publicly posted School Board Agenda. Information regarding state law and board policy have been included, as applicable, as well as an explanation of agenda items and the superintendent's recommendation for the agenda items.

I. Determination of Quorum/Call Meeting To Order

II. Pledge of Allegiance

- a. Mr. Daniels will lead the pledge

III. Public Comment

According to Board policy BDDH: "A specifically designated time will be set aside for public comments at regular meetings of the Board of Education. The following rules will be applied to the public comment portion of the meeting:

- *The Board will establish a time limit for the public comment period.*
- *No individual will be permitted to speak more than once during this period.*
- *The individual must reside in the district or be a landowner of the district.*
- *The Board will establish a uniform time limit for each speaker.*
- *Only items from the posted agenda may be discussed."*

IV. Approval of Consent Agenda Items

"The consent agenda allows members to vote on a group of items (en bloc) without discussion. This is a good way to dispose of business that is noncontroversial. "The presentation of the consent agenda is established by a special rule of order and should be taken up before committee reports.....If the consent agenda includes the approval of the minutes, then it should be taken up before any business is transacted."

Consent Agenda Items include:

- Minutes of previous meeting
- Monthly bills- - Identify and remove bills that must be approved individually
- Monthly Administrative/Principal Reports'

V. Adoption of Agenda

"The agenda shouldn't tie the hands of the assembly, prevent members from bringing up business, or enable a small group to railroad through their pet projects." "Agendas should have flexibility to provide for unseen things that may come up in a meeting."

VI. Student Time

- a. High School Student Time
 - I. Mrs. Field and the FTA (Future Teacher Association) Students

VII. Committee Reports

"If a committee report includes a recommendation of action that it wants the organization to take, its report should include a motion at the end of the report by the committee chairperson." "A motion from a committee of more than one does not need a second....."

- a. MSBA delegate report regarding meetings or issues related to MSBA

VIII. Old Business

Discuss items tabled from previous school board meetings or issues ongoing from meeting to meeting.

a. Soccer Program

Laura Wagner has asked to speak to the board regarding not only that the soccer program was cancelled for this season, but the manner in which it was cancelled. We discussed the soccer program as part of a principal's report last month and actually took action as a result of that report. We had not put this issue on the agenda as something that was going to be discussed or voted upon.

After Mrs. Wanger addresses the board, I will have Mr. Daniels and Mr. Ernst address the board regarding why the recommendation was made to cancel soccer for this season.

Recommendation: After listening to the open discussion on this topic, we will need to revote on the issue of cancelling soccer for this season only.

IX. New Business

a. Items extracted from consent agenda

Exceptions to monthly bills and any other item that was extracted from the consent agenda

b. Exceptions to monthly bills

This is where bill payment is approved for individuals related to board members. Additionally, any bill paid to an entity where a board member or a board member's relative is at least a part-owner should be paid here.

c. Monthly Financial Report

The board packet also includes a new financial report statement showing fund balances at the end of last month which reflect our current balances. It is summarized as follows:

Month ending February 2023

Balances: Incidental Fund (Fund 1): \$7,413,533.68
 Teacher's Fund (Fund 2): \$694,458.61
 Debt Service Fund (Fund 3): \$0
 Capital Projects Fund (Fund 4): \$1,849,236.35

Total (All Funds): \$9,957,228.64

Previous Year's Total (All Funds): \$9,514,163.52

d. School Board Policy Proposals

MSBA has sent the following school board policies to be adopted or revised:

JECA: Eligibility to Enroll

In the past, if parents who lived outside a school district's boundaries but wanted their children to attend another school district, would have to pay tuition to that district. If they owned property in the district they wanted to attend, it was customary to reduce the amount of tuition by the amount of property taxes paid to the district from the property they owned in the district.

A law was passed in 2022 (Senate Bill 681) that will now allow parents in that same situation to have their child attend school tuition-free if the parents own agricultural property in the district and pay property taxes to the district on that property—regardless of the amount of property taxes or the quantity of land. This law will go into effect for the 2023-2024 school year.

I am not aware of any families that might want to take advantage of this law. We have had no tuition-paying students for many years. However, that might change with this new law because families would not longer have to pay any tuition at all if they meet the narrow guidelines established by the law.

Recommendation: Approve the amended board policy as presented.

KC: Community Engagement

The same law as stated above (Senate Bill 681) requires school boards in Missouri to adopt a “community engagement” policy. This policy must allow “a process for any resident of the school district to have an item placed on the agenda for a school board meeting”. This policy is to be adopted after “receiving input from the community”. We have not asked for or received input from the community regarding this policy since we just received this proposed policy from MSBA. This policy will should be part of a “Community Engagement Plan”.

We need to start writing a community engagement plan which includes aspects incorporated into this board policy. This policy and plan will need to be in place by the start of next school year. We will not take board action regarding this at this time, but you just need to be aware that this must take place.

e. Improving Ventilation in Missouri Schools Grant

The CDC has created a grant to improve air quality in schools. This is a pass-through grant which is being overseen by the Missouri Department of Health and Senior Services. The purpose of this grant is to: “prevent or reduce the spread of respiratory viruses” in schools.

DHSS is offering Missouri public school districts contracts of up to \$160,000 to implement identified HVAC system repairs that will improve indoor air ventilation and quality. Participating districts may spend up to \$150,000 on HVAC repairs. The difficult part of this grant is that it just came out, but all HVAC projects have to be completed by July 31, 2023.

We are very much ahead of the game since we already have a competitively bid contractor doing HVAC work for us this summer who has access to HVAC units. Most schools could not even come close to meeting the short time-lines associated with this grant. I have been in touch with the grant coordinator at the Department of Health and Senior Services many times. I met with Joel and Scott from McKinstry this morning to discuss how we could complete this project within the time frame. We called the grant coordinator as we met together to ask questions and find out what is necessary to get this process started as quickly as possible so they could start looking for some HVAC units.

What we need to do is to submit a proposal stating that the school district has approved the expenditure of up to \$160,000 to repair or replace HVAC units in the district. McKinstry will submit a proposal stating that their scope of work will be to repair or replace identified HVAC units for a cost of up to \$160,000. We are looking replacing the HVAC units in both of the elementary libraries. Each library has at least two package units each. We would replace these four units servicing the libraries. I'm sure that we can do this within the financial parameters of the grant. Hopefully, if we start now, we can find, purchase, and take delivery of the four units that will be replaced within the short time line.

I've included an informational sheet regarding more of the details of the grant in the board packet. What we need to do to get the process start is to just approve moving forward with the project which will cost up to \$160,000. When the project is complete, we will submit for reimbursement.

Recommendation: I recommend that we move forward with seeking to improve air quality in our elementary schools by replacing aging HVAC units serving those schools with new units that provide fresh air into our schools. This project will be completed using McKinstry as our qualified provider, spending up to \$160,000 for this project.

f. Graduation Date for 2023- 2024 School Year

On the adopted school calendar for next school year it stated that graduation would be on May 10. This second Friday in May has been the traditional date on which we hold graduation. With school not letting out until May 23, we need to move graduation to a week later also. That would mean that we would hold graduation on May 17, at 7:30 p.m.

Recommendation: I recommend that we hold our Commencement ceremony for the 2023-2024 school year on Friday, May 17, 2024.

g. Annual Performance Report Scores

As you know, since the beginning of COVID, mandatory testing was interrupted and school APR scoring was postponed. This year, DESE initiated MSIP 6 which includes new provisions for rating and ranking schools based upon a variety of criteria. The current iteration of the Annual Performance Report assigns points for Performance and Continuous Improvement. At the district level, there are 126 points possible in "Performance" and 52 points possible in "Continuous Improvement". At the building level, there are 84 points possible for elementary schools and 86 points possible for middle schools and high schools.

DESE has stated the following regarding this new process and what they call "key considerations for reviewing the 2022 APR".

- It cannot be compared to previous APRs.
- It contains data from the 2021-22 school year only.
- It reflects the ongoing impact of the pandemic, including its disproportionate impact on some groups of students.
- It separates scoring for achievement status and growth and emphasizes them equally.
- It is the pilot report for MSIP 6 and cannot be used to lower district classification or to evaluate teachers.
- It is one among many data points for stakeholders.

As you can imagine, with this new system of "grading" or "scoring" schools, there are many unhappy districts—especially those that had decently high schools because it will be difficult for them to every get "improvement" points because the margin for improvement is so low. There was an article written lately by a superintendent in Texas that pretty much sums up the frustrations of all school districts in having to deal with this issue—which is being experience by many states. He is dealing with the TEA (Texas Education Association) but we could easily insert DESE where he talks about TEA.

We will review the APR scores for the district as a whole as well as for each individual school. I've included a copy of the scores in the board packet. We will discuss areas where we performed well as well as areas where we can readily see that we need to improve.

Recommendation: Approve the district APR scores as presented

X. Other Business

- a. None

XI. Monthly Program Report/Review

- a. None

XII. Administrators' Reports

Administrators' Reports are enclosed in board packet. Additions or questions regarding Administrators' Reports should be discussed at this time

- a. Each administrator will report on things occurring at their school.

XIII. Move To Closed Session, Closed Vote, Closed Record

"I make a motion to go into closed session for the purpose of consideration of agenda items as authorized in RSMo Section 610.021 (1), (3), (9), (13), & (14)

(1) Legal actions, causes of action or litigation involving a public governmental body and any confidential or privileged communications between a public governmental body or its representatives and its attorneys. However, any minutes, vote or settlement agreement relating to legal actions, causes of action or litigation involving a public governmental body or any agent or entity representing its interests or acting on its behalf or with its authority, including any insurance company acting on behalf of a public government body as its insured, shall be made public upon final disposition of the matter voted upon or upon the signing by the parties of the settlement agreement, unless, prior to final disposition, the settlement agreement is ordered closed by a court after a written finding that the adverse impact to a plaintiff or plaintiffs to the action clearly outweighs the public policy considerations of section 610.011, however, the amount of any moneys paid by, or on behalf of, the public governmental body shall be disclosed; provided, however, in matters involving the exercise of the power of eminent domain, the vote shall be announced or become public immediately following the action on the motion to authorize institution of such a legal action. Legal work product shall be considered a closed record;

(3) Hiring, firing, disciplining or promoting of particular employees by a public governmental body when personal information about the employee is discussed or recorded. However, any vote on a final decision, when taken by a public governmental body, to hire, fire, promote or discipline an employee of a public governmental body shall be made available with a record of how each member voted to the public within seventy-two hours of the close of the meeting where such action occurs; provided, however, that any employee so affected shall be entitled to prompt notice of such decision during the seventy-two-hour period before such decision is made available to the public. As used in this subdivision, the term "personal information" means information relating to the performance or merit of individual employees;

(9) Preparation, including any discussions or work product, on behalf of a public governmental body or its representatives for negotiations with employee groups;

(13) Individually identifiable personnel records, performance ratings or records pertaining to employees or applicants for employment, except that this exemption shall not apply to the names, positions, salaries and lengths of service of officers and employees of public agencies once they are employed as such, and the names of private sources donating or contributing money to the salary of a chancellor or president at all public colleges and universities in the state of Missouri and the amount of money contributed by the source;

(14) Records which are protected from disclosure by law;

Recommendation - - Move to go into Closed Session, Closed Record, Closed Vote
pursuant to RSMo 610.021 (1), (3), (9), (13), (14).

XIV. Return to regular session

XV. Adjourn



Mountain View – Birch Tree R-III School District

PO Box 464
Mountain View, MO 65548
Phone (417) 934-2020 Fax (417) 934-5404

MINUTES OF BOARD MEETING

Meeting Place: Mountain View Elementary Media Center
Type of Meeting: Regular Meeting
Time and Date: 6:00 p.m. February 16, 2023

Present	Members	Absent
Jennifer Foster, Presiding Board President		
Eric Wells Board Vice-President		
Shelly Mantel Delegate		
Beverly Denton		
Mikael Orchard		
Josh Roberts		
Keith Tharp		
Don Christensen Superintendent of Schools		
Rhonda Henry Board Secretary/Treasurer		

=====



Mountain View – Birch Tree R-III School District

PO Box 464

Mountain View, MO 65548

Phone (417) 934-2020 Fax (417) 934-5404

Continuation of regular district board meeting held on February 16, 2023

I. Determination of Quorum

The Mountain View-Birch Tree R-III Board of Education met in regular session at 6:00 p.m. on February 16, 2023, in the Mountain View Elementary School Media Center. A quorum was present with Beverly Denton, Jennifer Foster, Shelly Mantel, Mikael Orchard, Josh Roberts, Keith Tharp and Eric Wells in attendance.

II. Pledge of Allegiance

Mrs. Jester led the Pledge of Allegiance.

III. Public Comment

There were no requests for public comment.

IV. Consent Agenda

Keith Tharp made a motion, seconded by Josh Roberts, to approve the following items on the consent agenda. The motion passed unanimously.

- A. Minutes of the January 19 Regular Board meeting
- B. Payment of bills in the amount of \$983,697.90
- C. Monthly Administrative/Principal Report

V. Adoption of Agenda

Mikael Orchard made a motion, seconded by Beverly Denton, to approve the Adoption of Agenda. The motion passed unanimously.

VI. Student Time

- A. Mrs. Pitts and several students presented a very interesting program.

VII. Committee Reports

Josh Roberts made a motion, seconded by Eric Wells, to approve Shelly Mantel as the Region 15 Representative to MSBA. The motion passed unanimously.

VIII. Old Business

Mikael Orchard made a motion, seconded by Josh Roberts, to approve Dusty Bell, First Class Farm



Mountain View – Birch Tree R-III School District

PO Box 464

Mountain View, MO 65548

Phone (417) 934-2020 Fax (417) 934-5404

Continuation of regular district board meeting held on February 16, 2023

Improvements and Contracting, as our General Contractor for the new Bus Barn. Dusty submitted a bid in the amount of \$319,116.60 to finish the bus barn after the metal building is in place. The motion passed unanimously.

IX. New Business

- A. There were no items extracted from the consent agenda.
- B. Eric Wells made a motion, seconded by Beverly Denton, to approve payment of \$3,224.56 for supply to Brown's Farm & Garden. The motion passed with six members in favor. Mikael Orchard abstained.

Eric Wells made a motion, seconded by Josh Roberts, to approve payment of \$75.00 for supply to Foster's Appliances. The motion passed with six members in favor. Jennifer Foster abstained.
- C. Dr. Christensen presented the January 2023 financial report. The balance in all funds for January 2023 was \$10,143,138.38.
- D. Beverly Denton made a motion, seconded by Keith Tharp, to approve the Summer School dates of June 1 through June 30, 2023. The motion passed unanimously.
- E. Mikael Orchard made a motion, seconded by Josh Roberts, to approve the proposed 2023-2024 School Calendar (v. 6) as presented. The motion passed with 6 yes votes and 1 no vote.
- F. Mikael Orchard made a motion, seconded by Keith Tharp, to approve the senior trip as presented. The motion passed unanimously.
- G. Dr. Christensen presented certificates to the board members for School Board Recognition Week.

X. Other Business

- A. None

XI. Barbara Medina and Lanna Tharp presented the following monthly reports.

- A. Special Program Reports



Mountain View – Birch Tree R-III School District

PO Box 464

Mountain View, MO 65548

Phone (417) 934-2020 Fax (417) 934-5404

Continuation of regular district board meeting held on February 16, 2023

1. Special Education Report
2. English Language Learners (ELL) Report
3. Homeless Report

XII. Administrators' Report

- A. Mrs. Heiney, Mrs. Medina, Mr. Daniels, Mrs. Renshaw, Mrs. Jester, Mr. Marriott, Mr. Chowning, Mrs. Tharp and Dr. Christensen gave administrative reports.

Adjournment to Closed Session

Keith Tharp made a motion at approximately 8:08 p.m., seconded by Eric Wells, to go into closed session for the purpose of consideration of agenda items as authorized in RSMo Section 610.021, subsection (2), (3), (13), and (14). The motion passed as follows:

Beverly-yea

Shelly-yea

Josh-yea

Eric-yea

Jennifer-yea

Mikael-yea

Keith-yea



Mountain View – Birch Tree R-III School District

PO Box 464

Mountain View, MO 65548

Phone (417) 934-2020 Fax (417) 934-5404

Continuation of regular district board meeting held on February 16, 2023

CLOSED SESSION

Mikael Orchard made a motion, seconded by Keith Tharp, to accept the resignation from Les Taber, Custodian effective February 10, 2023. The motion passed as follows:

Beverly-yea	Shelly-yea	Josh-yea	Eric-yea
Jennifer-yea	Mikael-yea	Keith-yea	

Josh Roberts made a motion, seconded by Eric Wells, to add Joyce Yearwood to the Non-Certified Substitute List and Clayah Allen to the Certified Substitute List. The motion passed as follows:

Beverly-yea	Shelly-yea	Josh-yea	Eric-yea
Jennifer-yea	Mikael-yea	Keith-yea	

Josh Roberts made a motion, seconded by Keith Tharp, to employ Richie Jester, HS Teacher, Jackson Conner, MV/BT Elem Teacher, Roger Gastineau, MS Teacher for the 2023-2024 school year. The motion passed as follows:

Beverly-yea	Shelly-yea	Josh-yea	Eric-yea
Jennifer-yea	Mikael-yea	Keith-yea	

Keith Tharp made a motion, seconded by Mikael Orchard, to employ Kayla Hedgcoth Felts, PT Driver effective 02/21/23. The motion passed as follows:

Beverly-yea	Shelly-yea	Josh-yea	Eric-yea
Jennifer-yea	Mikael-yea	Keith-yea	

Keith Tharp made a motion, seconded by Josh Roberts, to employ Angie Jester, MVE Principal, Wade Marriott, MVE Asst. Principal, John Daniels, LHS Principal, Tammy Heiney, LHS Asst. Principal/ Curriculum Dir, and Barbara Medina, Special Programs Dir for the 2024-2025 school year. The motion passed as follows:

Beverly-yea	Shelly-yea	Josh-yea	Eric-yea
Jennifer-yea	Mikael-yea	Keith-yea	

Shelly Mantel made a motion, seconded by Mikael Orchard, to employ Tammy Heiney, LMS Principal for the 2023-2024 and the 2024-2025 school year. The motion passed as follows:

Beverly-yea	Shelly-yea	Josh-yea	Eric-yea
Jennifer-yea	Mikael-yea	Keith-yea	

Shelly Mantel left the meeting at 9:33 p.m.

Keith Tharp made a motion, seconded by Eric Wells, to return to regular session. The motion passed as follows:

Beverly-yea	Shelly-yea	Josh-yea	Eric-yea
Jennifer-yea	Mikael-yea	Keith-yea	



**Mountain View – Birch Tree R-III
School District
PO Box 464
Mountain View, MO 65548
Phone (417) 934-2020 Fax (417) 934-5404**

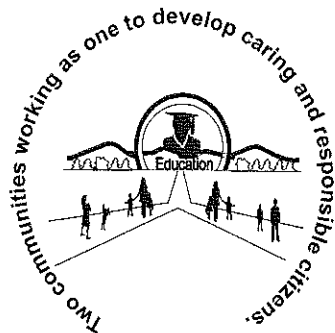
Continuation of regular district board meeting held on February 16, 2023

CLOSED SESSION

Jennifer Foster, Board President

Rhonda Henry, Board Secretary

DRAFT



Mountain View – Birch Tree R-III School District

PO Box 464

Mountain View, MO 65548

Phone (417) 934-2020 Fax (417) 934-5404

Continuation of regular district board meeting held on February 16, 2023

Shelly Mantel entered the meeting at 9:34 p.m.

Keith Tharp made a motion, seconded by Mikael Orchard, to cancel soccer for the 2022-2023 school year due to lack of players. The motion passed with 6 yes votes and 1 no vote.

Mikael Orchard made a motion at approximately 9:34 p.m., seconded by Keith Tharp, to adjourn the meeting. The motion passed as follows:

Beverly-yea
Jennifer-yea

Shelly-yea
Mikael-yea

Josh-yea
Keith-yea

Eric-yea

Jennifer Foster, Board President

Rhonda Henry, Board Secretary

Mountain View-Birch Tree R-III
1054 Old Highway 60
Mountain View, MO 65548

CHECK REGISTER (summary)

Dated: 3/3/2023

Page No: 1 of 1

Period: All Year

Year: 2022-2023

Selection Criteria : Check Number Value = 156574 |

Check No.	Date	Description	Check Amount	Void Amount	Month
Account Number:	510899	ALTON BANK			
156574	03/03/23	THARP LANNA	768.40	0.00	3
Total Amount:			768.40	0.00	
TOTAL NUMBER OF CHECKS: 1			Total Amount (All Accounts): 768.40	0.00	
GRAND TOTAL:			768.40		

Mountain View-Birch Tree R-III
1054 Old Highway 60
Mountain View, MO 65548

CHECK REGISTER (summary)

Dated: 3/3/2023

Page No: 1 of 2

Period: All Year

Year: 2022-2023

Selection Criteria : Check Number Range From 156575 To 156578 | Check Number Range From 156511 To 156573 | Check Number Value = 156507 | Check Number Value = 21 |

Check No.	Date	Description	Check Amount	Void Amount	Month
Account Number:	510899	ALTON BANK			
156507	02/21/23	HOWELL OREGON ELECTRIC	60.00	0.00	2
156511	02/27/23	TYLER TECHNOLOGIES INC	5,737.21	0.00	2
156512	03/02/23	RICOH USA INC	211.41	0.00	3
156513	03/03/23	AKERS KREG	143.75	0.00	3
156514	03/03/23	ALLEN CHARLOTTE	105.60	0.00	3
156515	03/03/23	APPLE MARKET	1,948.37	0.00	3
156516	03/03/23	BARNES STACEY	84.29	0.00	3
156517	03/03/23	BAYADA HOME HEALTH CARE	3,848.00	0.00	3
156518	03/03/23	BERRY CLINTON	123.95	0.00	3
156519	03/03/23	BIG RIVER COMMUNICATIONS	390.00	0.00	3
156520	03/03/23	BIOSHINE INC	79.16	0.00	3
156521	03/03/23	BIRCH TREE MFA	114.00	0.00	3
156522	03/03/23	BLUUM OF TEXAS LLC	7,831.25	0.00	3
156523	03/03/23	BOND MICHAEL	398.50	0.00	3
156524	03/03/23	CDWG	97.60	0.00	3
156525	03/03/23	CHAMBERS KALA	81.63	0.00	3
156526	03/03/23	CITY OF BIRCH TREE	523.51	0.00	3
156527	03/03/23	CITY OF MOUNTAIN VIEW	6,090.43	0.00	3
156528	03/03/23	CLAIM CARE INC	1,847.65	0.00	3
156529	03/03/23	CONNER, JACKSON	50.01	0.00	3
156530	03/03/23	CONWAY MARK	70.57	0.00	3
156531	03/03/23	COUNTRYSIDE PROPANE	1,372.52	0.00	3
156532	03/03/23	CURRENT INC	185.00	0.00	3
156533	03/03/23	DANIELS JOHN	430.93	0.00	3
156534	03/03/23	DECKER INC SCHOOL FIX	86.35	0.00	3
156535	03/03/23	DUDLEY LYNDSEY	38.40	0.00	3
156536	03/03/23	ELLIS KEVIN	252.50	0.00	3
156537	03/03/23	FERRELLGAS	4,126.25	0.00	3
156538	03/03/23	GODFATHERS PIZZA EXPRESS	109.90	0.00	3
156539	03/03/23	GRENNAN COMMUNICATIONS	135.00	0.00	3
156540	03/03/23	HADDOCK CORPORATION	3,498.00	0.00	3
156541	03/03/23	HAHN CAROL	220.00	0.00	3
156542	03/03/23	HENRY TRACY	150.00	0.00	3
156543	03/03/23	HILL TIM	135.00	0.00	3
156544	03/03/23	HOLLOWAY DISTRIBUTING	793.03	0.00	3
156545	03/03/23	HORN PLUMBING & HEATING	3.50	0.00	3
156546	03/03/23	J.W. PEPPER & SON INC	316.99	0.00	3

Mountain View-Birch Tree R-III
1054 Old Highway 60
Mountain View, MO 65548

CHECK REGISTER (summary)

Dated: 3/3/2023

Page No: 2 of 2

Period: All Year

Year: 2022-2023

Selection Criteria : Check Number Range From 156575 To 156578 | Check Number Range From 156511 To 156573 | Check Number Value = 156507 | Check Number Value = 21 |

Check No.	Date	Description	Check Amount	Void Amount	Month
156547	03/03/23	MAHIN LAUREN	9.60	0.00	3
156548	03/03/23	MARMIC FIRE & SAFETY CO	1,633.60	0.00	3
156549	03/03/23	MARTIN ED	415.00	0.00	3
156550	03/03/23	MASL	477.00	0.00	3
156551	03/03/23	MCAFEE MICHAEL	44.80	0.00	3
156552	03/03/23	MCI	90.18	0.00	3
156553	03/03/23	METALWELD INC	248.27	0.00	3
156554	03/03/23	MIDWEST COMPUTECH	4,761.56	0.00	3
156555	03/03/23	MO DEPT OF NAT RESOURCES	300.00	0.00	3
156556	03/03/23	MONJE EDWARD	189.20	0.00	3
156557	03/03/23	MTN VIEW LUMBER CO	322.04	0.00	3
156558	03/03/23	NATIONAL FFA ORG.	391.00	0.00	3
156559	03/03/23	NICHOLSON JOHN	150.00	0.00	3
156560	03/03/23	NORTH CAROLINA FARMS INC	200.75	0.00	3
156561	03/03/23	OZARK ALARMS AND SECURITY LLC	661.95	0.00	3
156562	03/03/23	OZARK PLATEAU INC	30.00	0.00	3
156563	03/03/23	OZARKS MEDICAL CENTER	3,362.33	0.00	3
156564	03/03/23	PALEN MUSIC CENTER	380.89	0.00	3
156565	03/03/23	PERMA BOUND BOOKS	212.44	0.00	3
156566	03/03/23	PRICE KEVIN	257.00	0.00	3
156567	03/03/23	QUILL CORPORATION	44.18	0.00	3
156568	03/03/23	REESE KIAH	550.00	0.00	3
156569	03/03/23	SCHOOL SPECIALTY LLC	1,864.09	0.00	3
156570	03/03/23	SMITH ERIN M.	140.60	0.00	3
156571	03/03/23	SMITH FLOORING INC	1,055.75	0.00	3
156572	03/03/23	SMOTHERMAN SUSAN	54.32	0.00	3
156573	03/03/23	SUMMERSVILLE BEACON	23.80	0.00	3
156575	03/03/23	THE STEEL YARD	882.14	0.00	3
156576	03/03/23	WALMART	188.97	0.00	3
156577	03/03/23	WESTEL GREENHOUSE LLC	809.61	0.00	3
156578	03/03/23	WOODS ROGER ALLEN	137.00	0.00	3
Total Amount:			61,578.33	0.00	
ALTON BANK					
Account Number: 510907			1,147.05	0.00	2
000021	02/28/23	ALTON BANK CARD		0.00	
Total Amount:			1,147.05	0.00	
TOTAL NUMBER OF CHECKS:			69	Total Amount (All Accounts):	62,725.38
GRAND TOTAL:					62,725.38

MOUNTAIN VIEW-BIRCH TREE R-III SCHOOL DISTRICT

MONTHLY FINANCIAL REPORT

MONTH ENDING FEBRUARY 2023

FUND	OPENING BALANCE	RECEIPTS	TRANSFER RECEIPTS	EXPENDITURES	TRANSFER EXPENDITURES	CLOSING BALANCE
INCIDENTAL	\$ 7,007,237.48	\$ 478,143.97		\$ (71,847.77)		\$ 7,413,533.68
TEACHERS	\$ 739,160.76	\$ 537,932.90		\$ (582,635.05)		\$ 694,458.61
DEBT SERVICE						
CAPITAL PROJ	\$ 2,396,740.14	\$ 114,130.31		\$ (661,634.10)		\$ 1,849,236.35
TOTAL	\$ 10,143,138.38	\$ 1,130,207.18		\$ (1,316,116.92)		\$ 9,957,228.64

PREVIOUS YEAR	\$ 9,198,979.76	\$ 1,266,056.68	\$ (950,872.92)	\$ 9,514,163.52
---------------	-----------------	-----------------	-----------------	-----------------

DEPOSITS

SIMMONS BANK OF MV	\$ 946,091.23
ALTON BANK	\$ 8,966,340.84
ALTON BANK SENIOR	\$ 91,937.56
TOTAL	\$ 10,004,369.63
PREVIOUS YEAR	\$ 9,862,094.09

RECONCILIATION

BANK BALANCE	\$ 10,004,369.63
OUTSTANDING CHECKS	\$ (47,140.99)
OUTSTANDING DEPOSITS	\$ -
ENDING BALANCE	\$ 9,957,228.64

MSBA FULL MAINTENANCE POLICY SERVICE
2023A POLICY UPDATE CHECKLIST
(Policies That Must be Adopted/Revised Prior to or by July 1, 2023)
2/10/23

District: MTN. VIEW

In order to best serve your district and to maintain your policies accurately, please indicate below what action your Board has taken on the policy reference copies enclosed for your review. We will send the district a clean copy of the policies after we receive and process this checklist.

- Please include a Board adoption date for every policy that has been adopted.
- Please mail, e-mail or fax a copy of any revisions made by the district to MSBA.

POLICY CODE	BOARD ACTION	BOARD ADOPTION DATE
JECA	Eligibility to Enroll	
KC	Community Involvement in Decision Making	

Name of district personnel filling out checklist

Date checklist completed

Please return to your MSBA Full Maintenance editor at: atwood@mosba.org
or mail to: MSBA Policy Services, 2100 I-70 Drive S.W., Columbia, MO 65203

Policy JECA-1: ELIGIBILITY TO ENROLL

Status: DRAFT

Original Adopted Date: 12/16/1993 | Last Revised Date: 10/15/2020

EXPLANATION

MSBA is amending this policy due to changes in the law under Senate Bill 681 (2022). Please note that these changes go into effect on July 1, 2023, and should not impact enrollment of nonresident students for the 2022-23 school year.

This is a dramatic change to the current Missouri law, which had been in effect for many decades. Regardless of whether a district allows nonresident students to attend on a tuition-paying basis, all districts have been required to allow enrollment of students whose parents pay school taxes to the district or children who live on agricultural land that is partially located in the district. These exceptions have now been replaced with a very narrow exception for residential or agricultural property owners. Parents/Guardians who meet the narrow parameters are not required to pay tuition—their children may attend for free. Please note that business property does not qualify for this exception.

The statute uses the term "children," so districts can count only biological or adopted children for state aid. Students being raised by persons other than their legal parents cannot attend under this new exception.

MSBA encourages districts to begin identifying students who are attending under the provisions of the previous law and work with the families to determine whether those students can still attend under the new law. If not, the district will need to make some decisions. The district could simply apply the law and tell the families that the student is no longer eligible for enrollment. The district could also grandfather these students into the district and allow them to continue to attend by paying tuition discounted by the amount of school taxes paid. The district cannot allow these students to attend without the payment of tuition.

(District Allows Tuition-Paying, Nonresident Students to Enroll and Attend)

The Mountain View-Birch Tree R-III School District (District) encourages all eligible students to enroll in the dDistrict. The superintendent or designee will develop an admission process that meets legal requirements and is efficient and welcoming to parents/guardians and students.

Enrollment

In general, in order to enroll a student in the «districtCommonName» District, a student, the parent, legal guardian, military guardian, person acting as a parent or the student must provide proof of legal residency in the dDistrict or request a waiver of proof of residency (as outlined in this policy) and must complete all admission requirements as determined by board policies, regulations and procedures. Students whose parents/guardians are being relocated to Missouri under military orders and who are registering remotely are required to provide proof of residency within ten days of the student's actual attendance in the dDistrict.

~~Students who do not provide proof of residency in the district will be admitted without payment of tuition only as permitted in this policy or required by law. This district allows nonresident students living in Missouri who are otherwise entitled to attend the district to enroll in and attend this district upon payment of tuition. The District may allow nonresident students to enroll in and attend the District upon payment of tuition as detailed in this policy.~~

Resident and Nonresident Students

A student is a "resident" student if the student~~he or she~~ meets at least one of the following criteria:

1. The student physically resides and is domiciled in the dDistrict. The domicile of a minor child shall be the domicile of a parent, military guardian pursuant to a military-issued guardianship or court-appointed legal guardian. A "power of attorney" document alone, with the exception of a special power of attorney document relevant to the guardianship of a child in the household of an active duty member of the military, is insufficient to satisfy the "court-appointed legal guardian" requirement.
2. The student does not live with a parent, military guardian or court-appointed guardian but does physically resides in the dDistrict for reasons other than obtaining access to the dDistrict's schools, ~~regardless of with whom the student is living,~~ and has a waiver of proof of residency on file.

3. The student will soon physically reside in the dDistrict due to relocation to Missouri of one or both of the student's parents/guardians under military orders.

Students who do not meet the requirements to be a resident student of the dDistrict, as defined in board policies and law, will be considered nonresidents.

Waiver of Proof of Residency

In cases where a student living in the dDistrict wishes to enroll, but the student does not live with a parent, military guardian or court-appointed guardian in the dDistrict and is not otherwise allowed by law or a contractual relationship with another school district to attend, the student, parent, military guardian, legal guardian or person acting as a parent must request a waiver of proof of residency. Waivers of proof of residency will be granted only on the basis of hardship or good cause. Good cause shall include situations where the student is living in the dDistrict for reasons other than attending school in the dDistrict. Under no circumstances shall athletic ability be a valid basis of hardship or good cause for the issuance of a waiver.

The board delegates to the superintendent or designee the responsibility for bringing to the board's attention any waiver application in which the student is not clearly entitled to attend school in the dDistrict. All other applications will be accepted and granted by the superintendent or designee on behalf of the board. Once a waiver application has been identified for board review, the board shall convene a hearing to consider the request as soon as possible, but no later than 45 days after the receipt of the waiver request, or else the waiver shall be granted. The board president may appoint a committee of the board to act in lieu of the board to consider waiver requests.

If a waiver request has been forwarded to the board for review, the superintendent or designee may permit a student to temporarily enroll and attend school until the board meets to decide whether the waiver request will be granted, if it is determined to be in the best interest of the student. If the board grants the waiver request, the student will be allowed to continue attending school in the dDistrict. If the board denies the waiver request, the student shall not be allowed to continue attending school in the dDistrict.

In instances where there is reason to suspect that admission of the student will create an immediate danger to the safety of other students and employees of the district, the superintendent or designee may convene a hearing within five working days of the enrollment request to determine whether the student may enroll.

Students Otherwise Entitled by Law to Enroll

In accordance with law, students will be enrolled and admitted without going through the waiver process when they attend under one of the following conditions, and tuition for these students, when applicable, will be charged in accordance with policy DFI. These conditions include students who:

1. Are considered homeless in accordance with state and federal law (42 U.S.C. § 11431 - 11435; § 167.020, RSMo.).
2. Are attending the district as participants in an interdistrict transfer program established under a court-ordered desegregation program (§ 167.020, RSMo.).
3. Are wards of the state and have been placed in a residential care facility within the dDistrict by state officials (§ 167.020, RSMo.).
4. Have been placed in a residential care facility within the dDistrict due to a mental illness or developmental disability (§ 167.020, RSMo.).
5. Have been placed in a residential care facility within the dDistrict by a juvenile court (§ 167.020, RSMo.).
6. Are assigned to the dDistrict by the commissioner of education due to an unusual or unreasonable transportation hardship (§ 167.121, RSMo.). The resident school district the student lives in will pay the tuition.
7. Have been identified as students with disabilities under state eligibility criteria and are in the dDistrict for reasons other than accessing the dDistrict's educational program (§ 167.020, RSMo.).
8. Have a permanent or temporary home in the dDistrict and are orphans, have only one parent living or their

parents do not contribute to their support, as long as the students are between the ages of 6 and 20 years old and are unable to pay tuition (§ 167.151, RSMo.).

9. Are children of parents/guardians who pay school taxes on property in the school district but do not live in the district. These students may attend school in the district on a tuition basis and will receive a credit for the school taxes paid (§ 167.151, RSMo.). Are children whose parent:

- Currently owns residential or agricultural real property in the District or is a named beneficiary of a trust that owns such property;
- Provides proof of ownership, or proof of the trust's ownership, of the property for at least the previous four consecutive years;
- Provides proof that the parent or the trust has annually paid a minimum of \$2,000 in school taxes to the school district levied on the property;
- Resides in the same county as the District; and
- Provides 30 days' written notice to the District of their intent to enroll the child.

The parent may send up to four of their children to the District under this provision. For the purposes of this exception, "residential real property" does not include multi-family residential property that exceeds four units.

10. Are children of parents/guardians who own real estate of which 80 acres or more are used for agricultural purposes and upon which their residence is situated. These children may attend school, without paying tuition, in any district in which a part of such real estate, contiguous to that upon which their residence is situated, lies, provided that 35 percent of the real estate is located in the district of choice (§ 167.151, RSMo.). Such parents/guardians are required to send notification by June 30 to all school districts involved specifying which district their children will attend, and the children will only attend the district notified for that school year. If notification is not received, such children shall attend the school in which the majority of the parent's/guardian's property lies.

10. Have been placed by the Missouri Department of Mental Health, the Missouri Department of Social Services or by court order in facilities or programs located within the dDistrict, even if their domicile is in another school district (§ 167.126, RSMo.). Tuition will be collected in accordance with policy DFI.
11. Are residing in a Missouri school district that has been declared unaccredited by the Missouri State Board of Education (State Board) and that is located in the same county as the «districtCommonName» District or an adjoining county (§ 167.895, RSMo.). The unaccredited school district will pay tuition as required by law. The «districtCommonName» District is not responsible for providing transportation.
12. Are living in a school district that does not provide education for all grade levels (such as K-6 or K-8 school districts) that is located in the same county as the «districtCommonName» District or an adjoining county (§ 167.131, RSMo.). The sending school district the student lives in will pay tuition as calculated by the «districtCommonName» District or the State Board in accordance with law. The «districtCommonName» District is not responsible for providing transportation. Before the dDistrict will enroll the student, the student must first enroll in the sending school district the student lives in and verify residency in that school district.
13. Are placed in the care of another person living in the dDistrict because one or both of their parents/guardians have been stationed or deployed out of state or deployed within Missouri by the military or because of active duty military service. These students will be allowed to attend school in the district without the payment of tuition (§§ 160.2000, 167.020, RSMo.). In addition, if the active duty orders expire during the school year, the students may finish the school year in the dDistrict in accordance with law.
14. Were enrolled in the «districtCommonName» District but, due to the active duty military service of a parent/guardian, are placed in the care of a person who resides in another school district. These students will be allowed to continue to attend school in the «districtCommonName» District without payment of tuition (§ 160.2000, RSMo.).
15. Attend a private school within the dDistrict and are enrolled in the dDistrict for the limited purpose of special education identification and the receipt of some special education services when available as mandated by federal special education law (§ 167.020, RSMo.).

16. Previously attended the dDistrict and have been placed in foster care in an adjacent school district (§ 167.019, RSMo.).
17. Are otherwise required by law to be enrolled and admitted.

Enrollment at the Option of the District

The board, in its discretion, may also allow students to enroll and attend under the following circumstances without going through the waiver process. Unless required by law, no student will be enrolled in the «districtCommonName» if the enrollment might result in overcrowding, disruption to the educational environment or a financial hardship to the dDistrict.

1. The dDistrict may enroll and educate nonresident students on a contractual basis with another school district that will pay the tuition or educational expenses (§ 167.020, RSMo.). For example, students may attend a dDistrict alternative education program on a contractual basis or as part of a regional or cooperative education program.
2. The children of nonresident teachers and regular employees may enroll in the district without paying tuition when the resident school district is not otherwise liable for tuition (§§ 163.011, 168.151, RSMo.). In accordance with law, these students will be considered resident students for the purpose of determining average daily attendance, and the board shall not solicit or receive money from a teacher employed by the dDistrict for the purpose of paying tuition or any other expenses for the operation of schools.
3. The dDistrict may enroll students pursuant to a contractual arrangement that complies with the Enrollment Option Act when permitted by law (§§ 162.1040 - .1059, RSMo.). A nonresident student enrolled pursuant to an enrollment option program shall be counted as a resident student for the purposes of determining state aid.
4. Nonresident students living in Missouri will be permitted to enroll in the dDistrict's schools upon payment of tuition as long as their admission will not require the district to exceed the district's target class sizes and student-to-teacher ratios set by the board.
5. In accordance with law, the dDistrict may enroll nonresident students in its summer school program if there is room in the district's program to accommodate the students, and the students are not attending summer school in another school district (§ 167.227, RSMo.). The dDistrict will either count the students as residents for state aid purposes or allow them to attend upon payment of tuition by another school district or the parents/guardians.

The dDistrict will not enroll nonresident students in summer programs funded entirely by federal funds unless there is an interdistrict agreement to provide those services.
6. Foreign exchange students living within the boundaries of the school dDistrict who have obtained a J-1 visa and who are sponsored by an organization listed on the Council on Standards for International Educational Travel (CSJET) Advisory List will be allowed to enroll in the school dDistrict. Such enrollment will be conditioned upon approval of the superintendent and in accordance with procedures set forth by the superintendent or designee. The board of education reserves the right to limit the number of foreign exchange students enrolled in a given year. Attendance by foreign exchange students is a privilege, not a right.
7. Children residing in institutions located within the dDistrict that provide a place of residence for three or more such children whose domicile is not in the state of Missouri may be admitted pursuant to a contractual arrangement, provided that the school dDistrict, its taxpayers, the state of Missouri or its political subdivisions bear no financial burden as a result of the placement (§ 167.126, RSMo.).

Tuition

The District or the State Board will determine the amount of tuition, when referenced in this policy, will be determined by the district in accordance with law and policy DFI.

Removal of Students Ineligible to Attend

The superintendent or designee will investigate any information the dDistrict receives indicating that a student is not

a resident of the dDistrict or not otherwise entitled to attend the dDistrict in accordance with law or this policy. If the superintendent or designee determines after the investigation that the student is not a resident of the dDistrict and is not otherwise entitled to enroll in and attend the dDistrict in accordance with law and the dDistrict's policy, the dDistrict will notify the student's parents/guardians, ask them to withdraw the student by a specific date, and offer the parents/guardians a hearing. If the parents/guardians do not request a hearing by the specified deadline and do not withdraw the student, the dDistrict will formally remove the student from its rolls and notify the parents/guardians that the student may no longer attend school in the dDistrict.

Unless otherwise prohibited by law, the dDistrict may exclude students from the dDistrict's education programs for failure to pay tuition after the responsible party is notified of the delinquency and given a reasonable amount of time to pay the dDistrict.

Educational Larceny

It is a crime to provide the dDistrict false information regarding residency. The board authorizes the superintendent or designee to make a criminal complaint and pursue civil recourse against any person who fraudulently asserts claims or attempts to fraudulently assert claim residency in the dDistrict.

Policy Reference Disclaimer: These references are not intended to be part of the policy itself, nor do they indicate the basis or authority for the board to enact this policy. Instead, they are provided as additional resources for those interested in the subject matter of the policy.

State References

Description

§§ 162.1040-.1059, RSMo.

State Statute -
<https://simbli.eboardsolutions.com/SU/slshVClyWU73Tdpv4JZYxrPDw==>

§160.2000, RSMo.

State Statute -
<https://simbli.eboardsolutions.com/SU/slshVClyWU73Tdpv4JZYxrPDw==>

§163.011, RSMo.

State Statute -
<https://simbli.eboardsolutions.com/SU/slshVClyWU73Tdpv4JZYxrPDw==>

§167.019, RSMo

State Statute -
<https://simbli.eboardsolutions.com/SU/slshVClyWU73Tdpv4JZYxrPDw==>

§167.020, RSMo

State Statute -
<https://simbli.eboardsolutions.com/SU/slshVClyWU73Tdpv4JZYxrPDw==>

§167.022, RSMo

State Statute -
<https://simbli.eboardsolutions.com/SU/slshVClyWU73Tdpv4JZYxrPDw==>

§167.121, RSMo

State Statute -
<https://simbli.eboardsolutions.com/SU/slshVClyWU73Tdpv4JZYxrPDw==>

§167.126, RSMo

State Statute -
<https://simbli.eboardsolutions.com/SU/slshVClyWU73Tdpv4JZYxrPDw==>

§167.131, RSMo

State Statute -
<https://simbli.eboardsolutions.com/SU/slshVClyWU73Tdpv4JZYxrPDw==>

§167.151, RSMo

State Statute -
<https://simbli.eboardsolutions.com/SU/slshVClyWU73Tdpv4JZYxrPDw==>

§167.227, RSMo

State Statute -
<https://simbli.eboardsolutions.com/SU/slshVClyWU73Tdpv4JZYxrPDw==>

§167.895, RSMo

State Statute -
<https://simbli.eboardsolutions.com/SU/slshVClyWU73Tdpv4JZYxrPDw==>

§167.898, RSMo

State Statute -
<https://simbli.eboardsolutions.com/SU/slshVClyWU73Tdpv4JZYxrPDw==>

§168.151, RSMo

State Statute -
<https://simbli.eboardsolutions.com/SU/slshVClyWU73Tdpv4JZYxrPDw==>

§431.058, RSMo.

State Statute -
<https://simbli.eboardsolutions.com/SU/slshVClyWU73Tdpv4JZYxrPDw==>

\$475.060, RSMo.

State Statute -
<https://simbli.eboardsolutions.com/SU/slshVClyWU73Tdpv4JZYxrPDw==>

MO COURT

Blue Springs R-IV Sch. Dist. v. Sch. Dist. of Kansas City, 415 S.W.3d 110 (Mo. banc 2013) -
<https://simbli.eboardsolutions.com/SU/UbQL1xGtQpuhwEoCYu2lOw==>

MO COURT

Breitenfeld v. Sch. Dist. of Clayton, 399 S.W.3d 816 (Mo. 2013) -
<https://simbli.eboardsolutions.com/SU/UbQL1xGtQpuhwEoCYu2lOw==>

Federal References

Description

42 U.S.C. §§ 11431-11435

McKinney - Vento Homeless Children's Assistance Act -
<https://simbli.eboardsolutions.com/SU/plusLEkiEKYG9tr1Va3O8c8g==>

8 U.S.C. § 1101

Federal Statute -
<https://simbli.eboardsolutions.com/SU/plusLEkiEKYG9tr1Va3O8c8g==>

FEDERAL COURT

Martinez v. Bynum, 461 U.S. 321 (1983) -
<https://simbli.eboardsolutions.com/SU/wetoaJSTYbAplusslshomcUbe4pA==>

FEDERAL COURT

Washington v. Ladue Sch. Dist. Bd. of Educ., 564 F. Supp. 2d 1059 (E.D. Mo. 2008) -
<https://simbli.eboardsolutions.com/SU/buleBac7vUQEPkDzL6PLwg==>

FEDERAL COURT

Horton v. Marshall Public Sch., 769 F.2d 1323 (8th Cir. 1985) -
<https://simbli.eboardsolutions.com/SU/RxrClKwX01SL2JnExj29bw==>

Cross References

Description

DFI-1

SETTING TUITION FOR DISTRICT PROGRAMS -
<https://simbli.eboardsolutions.com/SU/3xXsDcUmUvAmHWmuTslshPhqQ==>

IGBCA

PROGRAMS FOR HOMELESS STUDENTS -
<https://simbli.eboardsolutions.com/SU/v2WWJ8uJbpkYotQWYqUoJQ==>

IGBCB

PROGRAMS FOR MIGRATORY STUDENTS -
<https://simbli.eboardsolutions.com/SU/v91A0X8hfCcINmvQKmjsh7A==>

IGBCB-AP(1)

PROGRAMS FOR MIGRATORY STUDENTS - (K-12 Districts) -
<https://simbli.eboardsolutions.com/SU/WKug1aLyYpQlNlfHR3odWg==>

IGBE

STUDENTS IN FOSTER CARE -
<https://simbli.eboardsolutions.com/SU/MLAJHaoyJ1kAWMmplusmigcXQ==>

IGBE-1-AP(1)

STUDENTS IN FOSTER CARE - (Dispute Resolution Process) -
<https://simbli.eboardsolutions.com/SU/GDITgKQz5HNc5QwrdRjk3A==>

IHB

CLASS SIZE -
<https://simbli.eboardsolutions.com/SU/plusrleUQudjvMsvCJm6XegQ==>

Policy KC: COMMUNITY ENGAGEMENT

Status: DRAFT

Original Adopted Date: 03/07/1994 | Last Revised Date: 07/15/2004

EXPLANATION

Senate Bill 681 (2022) requires the board to adopt a community engagement policy after receiving input from the community. MSBA has created a community engagement policy that generally describes the purpose of community engagement, assorted ways to engage the community, and other aspects of a successful community engagement process. Most of the information came from the Illinois Association of School Boards publication "Connecting with the Community."

However, because this sample policy was not created with input from your district's community, MSBA has created a form, KC-AF1, also included in this update, that will allow the district to collaborate with the community to create an engagement plan. The district must seek community input and complete the plan prior to July 1, 2023.

Pursuant to law, community engagement must be used to create "a process allowing any resident of the school district to have an item placed on the agenda for a school board meeting." The law lists components that must be included in the agenda process. MSBA has modified policy BDDH, Public Participation in Board Meetings, to include those required components. However, the board must also receive input from the community regarding the process for getting an item on the agenda.

The MSBA website has detailed information about community engagement, including information about the purpose of community groups, the various types of engagement and how to implement community engagement.

The board recognizes the importance of ongoing community engagement in supporting the district's mission and is committed to engaging the community in meaningful and intentional ways.

Definitions

Community – The district's community includes district parents/guardians; residents; students; taxpayers; representatives from business, social services and local government; civic organizations; advocacy groups; religious leaders; employers; and others who have a stake in the district's success. The composition of community members participating in any particular engagement activity will vary depending on the purpose and type of the activity.

Community Engagement – The process by which school boards actively involve diverse citizens in dialogue, deliberation and collaborative thinking around common interests for their public schools. Community engagement focuses on long-term, significant issues involving the district's values, beliefs, mission, vision and goals. The board and district administration make operational decisions.

Engagement Activities – Include, but are not limited to, community forums, focus groups, study groups, listening circles, training and education on education-related topics, dialogue, visioning, polling/surveys, media strategies, webinars, wikis and shared workspaces.

Written Communication

It is crucial that district residents have the opportunity to communicate directly with the board, including outside of board meetings, where time is limited and where the district must conduct business. Community members may provide written comments to the board on a school-related topic by submitting the comments, electronically or otherwise, to the board secretary or the board president. Any communications directed to the board will be provided to all board members. When appropriate, the board president will respond on behalf of the board.

The district may post on the district's website an email address or other electronic tool for the public to use to submit comments to individual board members or the board as a whole.

Board Meetings

The board encourages the public to attend open school board meetings. As required by law and provided in policy

BDDH, the board allows district residents to request that an agenda item be added to regularly scheduled board meetings. The board provides other opportunities for the public to speak at board meetings as well. The board will, with community input, review the process that allows community members to place items on a meeting agenda.

Community Engagement Plan

The board will, with input from the community, create a plan for ongoing community engagement that is consistent with this policy and outlines additional engagement activities the board and district will use the following year. The board will coordinate the community engagement plan with the district- and building-level parent and family engagement plans required by law to maximize engagement opportunities and prevent unnecessary duplication. The board will annually review and adopt the community engagement plan in collaboration with the community.

The community engagement plan will clearly articulate a purpose for each engagement activity. Engagement activities will include at least three of the following four levels of community engagement:

1. Informing – Providing the community with balanced and objective information to assist in understanding the problem and the alternatives or solution.
2. Consulting – Obtaining community feedback on analysis, alternatives and/or decisions.
3. Involving – Working directly with the community to ensure that community issues and concerns are consistently understood and considered.
4. Collaborating – Involving the community in each aspect of a decision, including the development of alternatives and the identification of the preferred solution.

Generally, activity participants will reflect the demographics of the community. If participants are selected based on specialized skills, knowledge or other characteristics, the participants should reflect community demographics to the extent possible. The district will actively seek involvement from community members who reflect the district's demographics and have diverse viewpoints.

The district will conduct engagement activities using a variety of methods, including virtual, written and in-person methods. The district will schedule engagement activities at locations and times convenient to community participants. The district will hold in-person activities in accessible locations, when possible, and may provide childcare, language interpretation and other services to increase participation and understanding.

The board will evaluate all engagement activities in collaboration with activity participants to determine the activity's effectiveness. Depending on the type of activity, the evaluation may be ongoing over the course of the activity, conducted after the activity ends, or both.

Patrons of the district are encouraged to express ideas, concerns and comments about school programs through written correspondence, service on citizen advisory committees and responses to surveys authorized by the board, in accordance with board policies and procedures for receiving public complaints and public participation at board meetings, and as otherwise authorized or required for district participation in state and federal programs.

The board is mindful that it is accountable to the patrons of the district and shall give substantial weight to the advice it receives from individuals and community groups interested in the district's schools. The district is also mindful that it must take into account its responsibility for the welfare of the entire district in arriving at decisions.

The board recognizes that many residents of the district may be specially qualified to assist and advise the district because of their training, experience or personal characteristics, and the board encourages them to take an active part in school affairs.

The board also recognizes that community involvement is not only important at the district level but is often most effective at the school level. Each school in the district will advise patrons about any avenues for providing input unique to that school and will encourage them to take advantage of those opportunities.

State References

162.058, 167.700

Cross References

AD

BCE

BDDH-1

BF

IGBC

Description

State Statute -

<https://simbli.eboardsolutions.com/SU/slshVClYWU73Tdpv4JZYxrPDw==>

Description

SCHOOL DISTRICT MISSION -

<https://simbli.eboardsolutions.com/SU/plusGDKPJrLkiYEMOx46faxcg==>

BOARD COMMITTEES/ADVISORY COMMITTEES TO THE BOARD -

<https://simbli.eboardsolutions.com/SU/VVkl8JDLK9rkZmYplusSq3T9Q==>

PUBLIC PARTICIPATION AT BOARD MEETINGS -

<https://simbli.eboardsolutions.com/SU/7jPIXl8JRz8xvDZhiplSWw==>

SCHOOL BOARD POLICY PROCESS -

<https://simbli.eboardsolutions.com/SU/eWjal5zohERpJZm8plusOqmoA==>

PARENT AND FAMILY INVOLVEMENT AND ENGAGEMENT -

<https://simbli.eboardsolutions.com/SU/ZZqHCq8iJXslshfIF8EZjgjlw==>



Improving Ventilation in Missouri K-12 Schools Project Overview

Purpose

Why are we improving ventilation in schools?

Students need healthy air to be at their best for learning. Ventilation is one component of maintaining healthy environments, including indoor air quality (IAQ). When indoors, proper ventilation can also help reduce viral particle concentration and the potential of spreading respiratory diseases, like COVID-19. The health and comfort of students and teachers contributes to learning and productivity in the classroom, which in turn affects performance and achievement.

The purpose of the Improving Ventilation in Missouri K-12 Schools Project is to assist Missouri K-12 public schools with improving indoor air quality in an effort to prevent or reduce the spread of respiratory viruses, including COVID-19. Centers for Disease Control and Prevention (CDC) recommendations for ventilation in schools and child care

How are we improving ventilation in schools?

Through the ELC Reopening Schools cooperative agreement from the Centers for Disease Control and Prevention (CDC), the Missouri Department of Health and Senior Services (DHSS) is able to provide schools with funding and resources to implement ventilation mitigation strategies.

Participation

Eligibility

To participate in the Improving Ventilation in Schools Project schools must:

- Be a Missouri public school district
- Serve students in kindergarten up to grade 12
- Have completed or agree to complete an assessment of the HVAC system in one or more school buildings students routinely occupy

Project period

DHSS will reimburse participating districts for costs incurred after the date of contract execution through July 31, 2023.

How it works

DHSS is offering Missouri public school districts contracts of up to \$160,000 to implement identified HVAC system repairs that will improve indoor air ventilation and quality. Participating districts may spend up to \$150,000 on HVAC repairs. See allowed costs for how to use the remaining funds.

School districts will complete a survey to express interest in participating in the project. DHSS staff will reach out to interested districts to review the program requirements and start the contract process. DHSS will issue funds through a cost-reimbursement contract.

DHSS expects schools/districts with an executed contract to:

- Name a district Indoor Air Quality Coordinator to oversee work through the contract
- If not already completed, have HVAC system within one or more of the district's buildings students use routinely when school is in session evaluated to identify recommended repairs or improvements
- Work with a qualified HVAC professional to make improvements/repairs to the HVAC system using evaluation findings

- Ensure IAQ team members participate in training as appropriate for their role in the program(s); DHSS will assist in identifying training opportunities
- Submit HVAC assessment recommendations, a plan of how the district will accomplish the recommendations (see work plan template), and a spending plan prior to using the funds
- Submit quarterly status reports on the progress of approved repairs and a final report summarizing work accomplished
- Submit quarterly invoices for actual expenses incurred for HVAC repairs and other contract-related expenses

HVAC Assessment

DHSS partnered with Southeast Missouri State University (SEMO) Institute for Environmental Health Assessment & Patient Centered Outcomes to work with schools to provide free indoor air quality assessments and recommendations to improve air quality (IAQ Assessment Project). The Institute will also provide portable HEPA filtration units if appropriate. Visit [] for more information about the indoor air quality assessments and technical assistance available to you.

Because school districts may have completed an evaluation of their HVAC systems after January 1, 2020, participation in the IAQ Assessment Project is not required for receiving these funds.

Allowed costs

DHSS will reimburse the following:

- **Personnel and fringe benefits** for IAQ Coordinator or other district staff's time involved in implementing the project, including attending training
- **Supplies** including portable high-efficiency particulate air (HEPA) fan/filtration systems or other small items that may allow for improved air circulation – must be evidence-based or CDC recommended and have DHSS prior approval; HEPA replacement filters
- Cost of repairs or improvements made to HVAC systems as approved in the work plan up to \$150,000; must also have a completed air quality assessment with recommendations for repairs or improvements or agree to complete an assessment prior to spending funds for HVAC repairs
- **Travel and registration costs** for staff to attend training with prior approval

Disallowed costs

DHSS **will not** reimburse purchase of:

- Items or services already provided
- Antigen tests
- Food
- Non-evidence-based or CDC-recommended supplies or equipment related to COVID-19 mitigation
- Fees for HVAC assessment, unless DHSS gives prior written approval
- Items or services incurred outside of the contract period

Additional indoor air quality resources

Schools can act to protect the health of their students and staff by reviewing the Environmental Protection Agency's (EPA) "Healthy Schools" program which provides tools to assess and fix IAQ problems.

- [Environmental Protection Agency Introduction to Indoor Air Quality](#)
- <https://www.epa.gov/iaq-schools>

[Missouri Center for Education Safety](#)

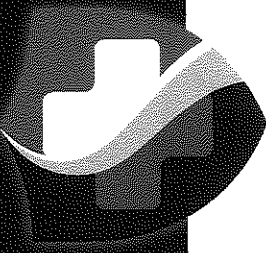
Online training available—Realistic Strategies for Indoor Air Quality

For more information about the Improving Air Ventilation in K-12 Schools project, please contact Cheryl Stock at Cheryl.Stock@health.mo.gov.

This project is supported by the Centers for Disease Control and Prevention of the U.S. Department of Health and Human Services (HHS) as part of a financial assistance award totaling \$184,856,322 with 100 percent funded by CDC/HHS. The contents are those of the author(s) and do not necessarily represent the official views of, nor an endorsement, by CDC/HHS, or the U.S. Government.

Missouri Department of Health and Senior Services

912 Wildwood Drive | Jefferson City, MO 65109



IMPROVING VENTILATION IN SCHOOLS PROJECT Work Plan

Missouri school districts participating in the Improving Ventilation in Schools Project should complete the work plan below and return the completed form to cheryl.stock@health.mo.gov. The work plan should document how the school district plans to complete repairs or improvements to the HVAC system in at least one building students routinely occupy during the school year. Please add additional rows as needed.

School District Name:
IAQ Coordinator:
Email:

School Building	HVAC Assessment Date	Repair or Improvement Planned (please list each separately)	Responsible	Anticipated Completion Date	Comments

Missouri Department of Health and Senior Services
912 Wildwood Drive | Jefferson City, MO 65109

2022 MSIP 6 Annual Performance Report (APR)
Year 1 Pilot

State law prohibits the State Board of Education from lowering the classification of an LEA when implementing new standards for purposes of accreditation. The 2022 APR includes points for both performance and continuous improvement standards.

	Points Possible	Points Earned	% Points Earned
Performance:	126.0	87.6	69.5%
Continuous Improvement:	52.0	46.0	88.5%
Totals:	178.0	133.6	75.1%

Performance Totals						
Performance		Points Possible	Points Earned	% Points Earned	MPI	Designation
Academic Achievement Status - English Language Arts	All Students	12.0	9.0	75.0%	382.2	On Track
	Student Group	6.0	4.5	75.0%	361.9	On Track
Academic Achievement Status - Mathematics	All Students	12.0	9.0	75.0%	375.7	On Track
	Student Group	6.0	4.5	75.0%	344.7	On Track
Academic Achievement Status - Science	All Students	4.0	3.0	75.0%	382.3	On Track
	Student Group	2.0	1.5	75.0%	355.0	On Track
Academic Achievement Status - Social Studies	All Students	4.0	3.0	75.0%	379.2	On Track
	Student Group	*	*	*	364.4	Small Cells
Academic Achievement Growth - Eng. Language Arts	All Students	12.0	4.1	34.2%		Below Average
	Student Group	6.0	3.4	56.7%		Average
Academic Achievement Growth - Mathematics	All Students	12.0	7.9	65.8%		Average
	Student Group	6.0	3.7	61.7%		Average
Success-Ready Students	CCR Assessments ¹	10.0	5.0	50.0%		Approaching
	Advanced Credit ²	10.0	5.0	50.0%		Approaching
Graduation Rate	4-Year	20.0	20.0	100.0%		Target
Graduate Follow-up		4.0	4.0	100.0%		Target

* Suppression has been applied to protect small student populations.

¹CCR assessments include the following: ACT™, SAT™, WorkKeys™, Accuplacer™, and ASVAB.

²Advanced Credit includes: AP™, IB™, Dual Credit, Dual Enrollment, PLTW™, IRC or two qualifying stackable credentials.

Continuous Improvement Totals					
Continuous Improvement		Points Possible	Points Earned	% Points Earned	Met/Not Met
Improvement Plan		30.0	30.0	100.0%	
LEA Response to Standards	Available in 2024				
Climate and Culture Survey		4.0	4.0	100.0%	
Success-Ready Students	KEA ³	4.0	4.0	100.0%	
	ICAP ⁴	4.0	0.0	0.0%	
	Attendance	4.0	2.0	50.0%	
	CTE Expansion ⁵	0.0	0.0	0.0%	

MSIP 6 Required Documentation	Audit	2.0	2.0	100.0%	Met
	Annual Secretary of the Board Report (ASBR)	2.0	2.0	100.0%	Met
	Timely Submission of MOSIS/Core Data	2.0	2.0	100.0%	Met

³Kindergarten Entry Assessment

⁴Individual Career and Academic Plan

⁵In compliance with Section 162.1115, RSMo., points are awarded for the expansion of Career Technical Education Programs. Points are awarded when the LEA did not earn the maximum number of points possible in the performance Success-Ready Students category.

Assessment Participation Rates			
Content Area	Total Test Records	Valid Test Scores	Participation Rate
English Language Arts	647	645	99.6%
Mathematics	651	650	99.8%
Science	254	252	99.2%
Social Studies	80	79	98.7%

Other Accreditation Considerations	Yes/No
Does the LEA meet the minimum threshold for fund balances?	Yes
Is the superintendent appropriately certified?	Yes
Have all board members participated in required orientation and training?	Yes
Is LEA Compliant with Federal and State Law?	Yes

2022 MSIP 6 Annual Performance Report
Year 1 Pilot

State law prohibits the State Board of Education from lowering the classification of an LEA when implementing new standards for purposes of accreditation. The 2022 APR includes points for both performance and continuous improvement standards.

	Points Possible	Points Earned	% Points Earned
Performance:	76.0	40.5	53.3%
Continuous Improvement:	8.0	4.0	50.0%
Totals:	84.0	44.5	53.0%

Performance Totals						
Performance		Points Possible	Points Earned	% Points Earned	MPI	Designation
Academic Achievement Status - English Language Arts	All Students	12.0	6.0	50.0%	362.9	Approaching
	Student Group	6.0	3.0	50.0%	344.4	Approaching
Academic Achievement Status - Mathematics	All Students	12.0	6.0	50.0%	360.1	Approaching
	Student Group	6.0	3.0	50.0%	325.0	Approaching
Academic Achievement Status - Science	All Students	4.0	2.0	50.0%	323.3	Approaching
	Student Group	*	*	*	312.5	Small Cells
Academic Achievement Growth - Eng. Language Arts	All Students	12.0	6.3	52.5%		Average
	Student Group	6.0	3.1	51.7%		Average
Academic Achievement Growth - Mathematics	All Students	12.0	7.7	64.2%		Average
	Student Group	6.0	3.4	56.7%		Average

* Suppression has been applied to protect small student populations.

¹CCR assessments include the following: ACT™, SAT™, WorkKeys™, Accuplacer™, and ASVAB.

²Advanced Credit includes: AP™, IB™, Dual Credit, Dual Enrollment, PLTW™, IRC or two qualifying stackable credentials.

Continuous Improvement Totals					
Continuous Improvement		Points Possible	Points Earned	% Points Earned	Met/Not Met
Success-Ready Students	KEA ³	4.0	4.0	100.0%	
	ICAP ⁴				
	Attendance	4.0	0.0	0.0%	

³Kindergarten Entry Assessment

⁴Individual Career and Academic Plan

Assessment Participation Rates			
Content Area	Total Test Records	Valid Test Scores	Participation Rate
English Language Arts	82	82	100%
Mathematics	82	82	100%
Science	26	26	100%
Social Studies	0	0	0%

Data as of: 1/19/2023

Report as of: 3/3/2023

2022 MSIP 6 Annual Performance Report
Year 1 Pilot

State law prohibits the State Board of Education from lowering the classification of an LEA when implementing new standards for purposes of accreditation. The 2022 APR includes points for both performance and continuous improvement standards.

	Points Possible	Points Earned	% Points Earned
Performance:	78.0	73.1	93.7%
Continuous Improvement:	8.0	6.0	75.0%
Totals:	86.0	79.1	92.0%

Performance Totals						
Performance		Points Possible	Points Earned	% Points Earned	MPI	Designation
Academic Achievement Status - English Language Arts	All Students	12.0	12.0	100.0%	401.0	Target
	Student Group	6.0	6.0	100.0%	383.1	Target
Academic Achievement Status - Mathematics	All Students	12.0	12.0	100.0%	405.5	Target
	Student Group	6.0	6.0	100.0%	377.0	Target
Academic Achievement Status - Science	All Students	4.0	4.0	100.0%	408.8	Target
	Student Group	2.0	2.0	100.0%	387.5	Target
Academic Achievement Growth - Eng. Language Arts	All Students	12.0	9.6	80.0%		Above Average
	Student Group	6.0	5.2	86.7%		Above Average
Academic Achievement Growth - Mathematics	All Students	12.0	10.8	90.0%		Above Average
	Student Group	6.0	5.5	91.7%		Above Average

* Suppression has been applied to protect small student populations.

¹CCR assessments include the following: ACT™, SAT™, WorkKeys™, Accuplacer™, and ASVAB.

²Advanced Credit includes: AP™, IB™, Dual Credit, Dual Enrollment, PLTW™, IRC or two qualifying stackable credentials.

Continuous Improvement Totals					
Continuous Improvement		Points Possible	Points Earned	% Points Earned	Met/Not Met
Success-Ready Students	KEA ³	4.0	4.0	100.0%	
	ICAP ⁴				
	Attendance	4.0	2.0	50.0%	

³Kindergarten Entry Assessment

⁴Individual Career and Academic Plan

Assessment Participation Rates			
Content Area	Total Test Records	Valid Test Scores	Participation Rate
English Language Arts	190	190	100%
Mathematics	189	189	100%
Science	69	69	100%
Social Studies	0	0	0%

Data as of: 1/19/2023

Report as of: 3/3/2023

2022 MSIP 6 Annual Performance Report
Year 1 Pilot

State law prohibits the State Board of Education from lowering the classification of an LEA when implementing new standards for purposes of accreditation. The 2022 APR includes points for both performance and continuous improvement standards.

	Points Possible	Points Earned	% Points Earned
Performance:	78.0	32.2	41.3%
Continuous Improvement:	8.0	2.0	25.0%
Totals:	86.0	34.2	39.8%

Performance Totals						
Performance		Points Possible	Points Earned	% Points Earned	MPI	Designation
Academic Achievement Status - English Language Arts	All Students	12.0	6.0	50.0%	369.6	Approaching
	Student Group	6.0	3.0	50.0%	348.8	Approaching
Academic Achievement Status - Mathematics	All Students	12.0	6.0	50.0%	366.5	Approaching
	Student Group	6.0	3.0	50.0%	332.8	Approaching
Academic Achievement Status - Science	All Students	4.0	2.0	50.0%	367.3	Approaching
	Student Group	2.0	1.0	50.0%	326.7	Approaching
Academic Achievement Growth - Eng. Language Arts	All Students	12.0	1.3	10.8%		Below Average
	Student Group	6.0	2.1	35.0%		Below Average
Academic Achievement Growth - Mathematics	All Students	12.0	5.3	44.2%		Below Average
	Student Group	6.0	2.5	41.7%		Below Average

* Suppression has been applied to protect small student populations.

¹CCR assessments include the following: ACT™, SAT™, WorkKeys™, Accuplacer™, and ASVAB.

²Advanced Credit includes: AP™, IB™, Dual Credit, Dual Enrollment, PLTW™, IRC or two qualifying stackable credentials.

Continuous Improvement Totals					
Continuous Improvement		Points Possible	Points Earned	% Points Earned	Met/Not Met
Success-Ready Students	KEA ³				
	ICAP ⁴	4.0	0.0	0.0%	
	Attendance	4.0	2.0	50.0%	

³Kindergarten Entry Assessment

⁴Individual Career and Academic Plan

Assessment Participation Rates			
Content Area	Total Test Records	Valid Test Scores	Participation Rate
English Language Arts	297	296	99.6%
Mathematics	298	298	100%
Science	92	92	100%
Social Studies	0	0	0%

Data as of: 1/19/2023

Report as of: 3/3/2023

2022 MSIP 6 Annual Performance Report
Year 1 Pilot

State law prohibits the State Board of Education from lowering the classification of an LEA when implementing new standards for purposes of accreditation. The 2022 APR includes points for both performance and continuous improvement standards.

	Points Possible	Points Earned	% Points Earned
Performance:	82.0	61.0	74.4%
Continuous Improvement:	4.0	0.0	0.0%
Totals:	86.0	61.0	70.9%

Performance Totals						
Performance		Points Possible	Points Earned	% Points Earned	MPI	Designation
Academic Achievement Status - English Language Arts	All Students	12.0	12.0	100.0%	405.1	Target
	Student Group	*	*	*	375.9	Small Cells
Academic Achievement Status - Mathematics	All Students	12.0	6.0	50.0%	356.2	Approaching
	Student Group	6.0	3.0	50.0%	325.8	Approaching
Academic Achievement Status - Science	All Students	4.0	3.0	75.0%	396.6	On Track
	Student Group	*	*	*	383.8	Small Cells
Academic Achievement Status - Social Studies	All Students	4.0	3.0	75.0%	379.2	On Track
	Student Group	*	*	*	364.4	Small Cells
Academic Achievement Growth - Eng. Language Arts	All Students	0.0	0.0	0.0%		
	Student Group	0.0	0.0	0.0%		
Academic Achievement Growth - Mathematics	All Students	0.0	0.0	0.0%		
	Student Group	0.0	0.0	0.0%		
Success-Ready Students	CCR Assessments ¹	10.0	5.0	50.0%		Approaching
	Advanced Credit ²	10.0	5.0	50.0%		Approaching
Graduation Rate	4-Year	20.0	20.0	100.0%		Target
Graduate Follow-up		4.0	4.0	100.0%		Target

* Suppression has been applied to protect small student populations.

¹CCR assessments include the following: ACT™, SAT™, WorkKeys™, Accuplacer™, and ASVAB.

²Advanced Credit includes: AP™, IB™, Dual Credit, Dual Enrollment, PLTW™, IRC or two qualifying stackable credentials.

Continuous Improvement Totals					
Continuous Improvement		Points Possible	Points Earned	% Points Earned	Met/Not Met
Success-Ready Students	KEA ³				
	ICAP ⁴				
	Attendance	4.0	0.0	0.0%	

³Kindergarten Entry Assessment

⁴Individual Career and Academic Plan

Assessment Participation Rates

Data as of: 1/19/2023

Report as of: 3/3/2023

Preliminary
Embargoed until March 7, 2023

MOUNTAIN VIEW-BIRCH TREE R-III (046130)
LIBERTY SR. HIGH 09-12 (1050)
[Link to District/Charter website](#)

Content Area	Total Test Records	Valid Test Scores	Participation Rate
English Language Arts	78	77	98.7%
Mathematics	82	81	98.7%
Science	67	65	97.0%
Social Studies	80	79	98.7%

https://www.victoriaadvocate.com/opinion/a-fable-a-moral-and-a-call-to-action/article_5e60be54-b6ce-11ed-904c-af385f886870.html

Guest column

A fable, a moral, and a call to action

Quintin Shepherd - Guest Column

Feb 27, 2023



Quintin Shepherd
Contributed photo

Once upon a time, in a small kingdom far away, there lived two children named Westington and Easterly. They were known throughout the land for their speed. They were especially well known because they got faster with every race. They were on pace

to outrun any animal, outpace any carriage, and most importantly were beloved by all who knew them.

One day, the ruler of the kingdom, who was jealous of their increasing speed, decided to change the definition of “fast.” He decreed that from that day forward, anyone who could not run faster than his new definition of fast would be considered slow.

At first, no one noticed the change. But soon, it became apparent that Westington and Easterly were now considered slow. They were heartbroken and the village who loved these children were heartbroken, but they did not know how to challenge the king’s decree.

Two important sages, both very wise and with special power of influence, saw what the king had done and knew they had to act. Their special power came directly from the villagers, and they knew if they could rally the people, they could challenge the king and make him see the error of his ways.

So, the ineffable sages went out into the village and began to tell the people what had happened. They explained that nothing had changed about Westington and Easterly’s speed, just the way it was being measured. The people were outraged, and they rallied behind these great and powerful sages. The people began sharing the story with others and soon the entire village was outraged, giving the sages great power.

Together, they went to the king and demanded he change his decree. The king was surprised by the show of force from the village, but he refused to budge. So, the people organized a race to time Westington and Easterly and then compare them to their previous race times to show they were getting faster, not slower.

The king insisted the new race be run on more rugged terrain.

The race was a close one, but in the end, Westington and Easterly beat their previous times. The king had to admit that they were still fast, despite his attempts to redefine the word.

In the end, the people of the village learned an important lesson: power comes from their unity and willingness to speak out against injustice. They knew that if they worked together, they could accomplish anything they set their minds to, no matter how powerful the opposition may seem.

The moral of the story is that a united village is an unstoppable force. When people work together, they can overcome any obstacle and achieve their goals, no matter how impossible they may seem.

Here are the facts: West High School Overall 2022 TEA rating was 81. East High School Overall 2022 TEA rating was 78. TEA has changed the definition this coming year and using those exact scores above, with the exact same students and the exact same data, West could move from an 81 to a 72. East could move from a 78 to a 68. Remember, this is nothing more than a recalculation, not a reflection on learning or improvement.

This is simply tragic for our students, our families, and our staff, who work with relentless effort to improve student learning. Victoria ISD has worked hard to make improvements in the past several years and we have made great strides. TEA has changed the way it measures students which may create a narrative that our scores are dropping which is untrue. This is bigger than simple test scores. These rating changes can negatively impact property values, economic development, families, and our entire community (and every other community in Texas).

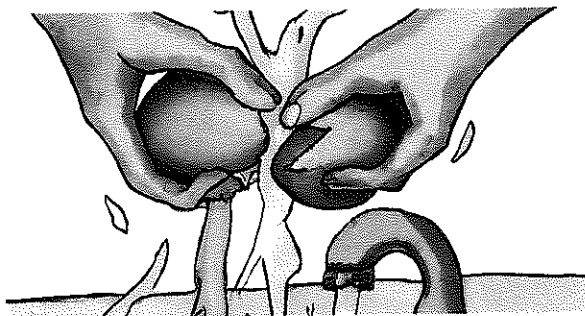
—

My concern with TEA's proposed changes in how Texas high schools are rated is not based on a fear of higher standards or expectations; it's the timing. The concerns are based upon two reasonable facts: a) 60% of the new 2023 high school accountability label under TEA's proposed changes is based on students who graduated in 2022 and are no longer in Texas high schools and, b) Texas school districts have not been given any time to adequately adjust their courses, curriculum, and programs to meet the TEA's proposed rule changes. It boils down simply to an issue of fairness to students, teachers, parents, and school systems.

I encourage every one of you to reach out to your elected officials and TEA and ask for a transition year, just one year, which would allow TEA to proceed with implementing the new rules, and also allow districts and schools to prepare for this change with students currently in our system. To be clear, I am not opposed to higher standards, I just want our school district, teachers and students to have the opportunity to prepare.

Quintin Shepherd is the superintendent of the Victoria Independent School District.

SPONSORED CONTENT



Top Heart Surgeon: This Simple Trick Helps Empty Your Bowels Every Morning

By Guthealthwellness

How To Clean Your Guts Every Day - Top Surgeon Explains

March BOARD REPORT

ADMINISTRATOR(S): Renshaw

K-5 CURRENT ENROLLMENT: 162

Focusing on Leadership (CSIP Goal 1)

- *Lead From Where You Are*
- *Eat That Frog!*
-

Focusing on Alignment of Standards, Curriculum, and Assessment (CSIP Goal 4)

- 5 teachers in our building will be participating in the Talk2Read grant.
- Eagle Walk
- Teachers in grades 3-5 are completing MAP practice

Focusing on Effective Teaching and Learning (CSIP Goal 2)

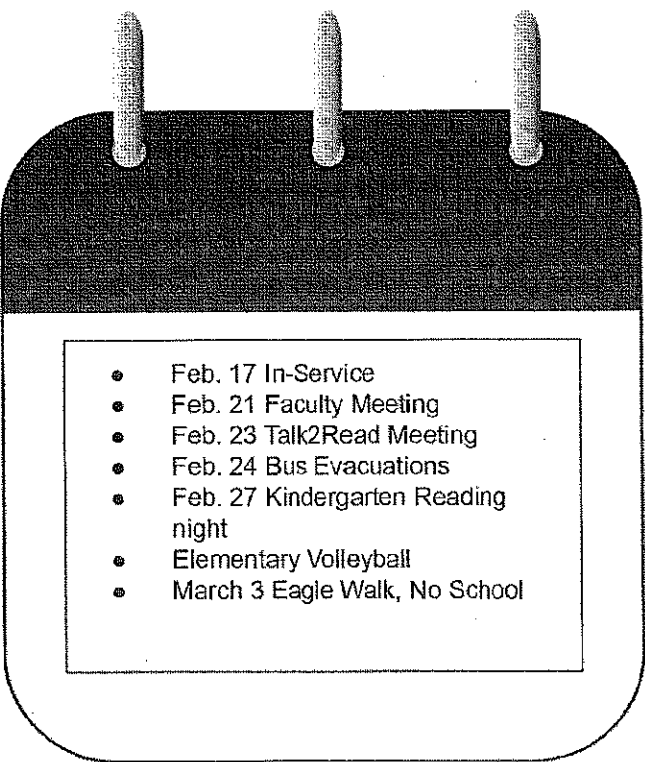
- Students continue to have tutoring.
- Talk2Read grant
-

Focusing on Equity and Access (CSIP Goal 5)

- Fresh Fruit and Vegetable Program
- Continually tracking attendance & incentives
- Apptegy Meeting

Focusing on Collaborative Climate and Culture (CSIP Goal 3)

- Working on a teacher recognition
- Words of Wisdom (Bulletin Board)

- 
- Feb. 17 In-Service
 - Feb. 21 Faculty Meeting
 - Feb. 23 Talk2Read Meeting
 - Feb. 24 Bus Evacuations
 - Feb. 27 Kindergarten Reading night
 - Elementary Volleyball
 - March 3 Eagle Walk, No School

MARCH BOARD REPORT

ADMINISTRATOR(S): Jester/Marriott

K-5 CURRENT ENROLLMENT: 477
February ATTENDANCE %: 91.6

Focusing on Leadership (CSIP Goal 1)

- *Lead From Where You Are*
- Principal Conference 3/5-3/7

Focusing on Effective Teaching and Learning (CSIP Goal 2)

- Tutoring
- MAP Prep with Tina
- MAP practice in classrooms

Focusing on Collaborative Climate and Culture (CSIP Goal 3)

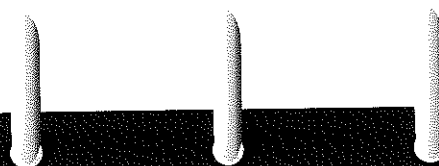
- Hamburgers/hot dogs next week
- Plans for getting the students ready for testing!
- APR celebration in the works!

Focusing on Alignment of Standards, Curriculum, and Assessment (CSIP Goal 4)

- 5 teachers in our building will be participating in the Talk2Read grant.
- Eagle Walk
- BTAP
- MAP Training 3/22

Focusing on Equity and Access (CSIP Goal 5)

- Trying to come up with an attendance plan
- Behavior goals for our building



- March 3- No school
- 10th- end of 3rd quarter
- 20th- iReady window opens
- 22nd- team meetings/MAP training
- 28-30- Kindergarten screenings

LIBERTY MIDDLE SCHOOL

MARCH BOARD REPORT

RYAN CHOWNING & ELI ERNST

CURRENT ENROLLMENT: 309

Attendance: 91.43%

Focusing on Leadership (CSIP Goal 1)

- Continuing to be involved with central office activities as I have time in order to make the transition smooth
- Finalizing summative evals for the year

Focusing on Alignment of Standards, Curriculum, and Assessment (CSIP Goal 4)

- MAP and iReady testing calendar is out

Focusing on Effective Teaching and Learning (CSIP Goal 2)

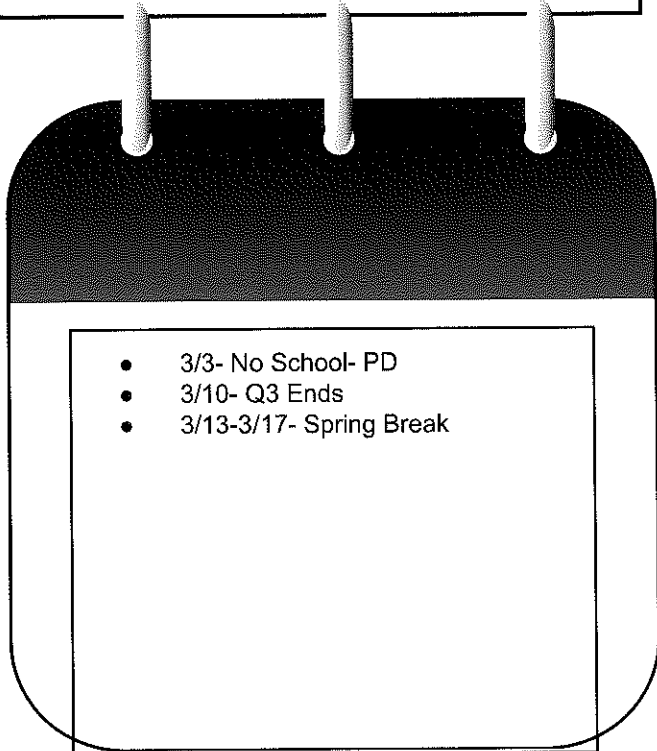
- Lots of MAP prep happening. The year is winding up fast!
- Trying to get pictures and updates for our social media presence to show the great things happening.

Focusing on Equity and Access (CSIP Goal 5)

- Continuing with attendance incentives & always looking for new ideas to promote attendance
- Honoring Student of the Month internally and also in conjunction with Andrea McNew, Shelter Insurance.

Focusing on Collaborative Climate and Culture (CSIP Goal 3)

- Assisting Mrs. Heiney as she begins working with small groups to familiarize herself with everyone on a new level.

- 
- 3/3- No School- PD
 - 3/10- Q3 Ends
 - 3/13-3/17- Spring Break

SPECIAL EDUCATION

MARCH BOARD REPORT

ADMINISTRATOR: Barbara Medina

CURRENT ENROLLMENT: 215

- ECSE: 32
- K-12: 183

Focusing on Leadership (CSIP Goal 1)

- Book Study: *Lead From Where You Are*
- Bi-Monthly Special Ed Staffing in each building.
- Intruder/Shooter Training 2/17/2023
- "My Kid Needs a Para" Training 2/21/23
- DESE Compliance Training MAP-A 2/23/23
- MO-CASE Law and Collaborative Conference 3/7 -3/9/23

Focusing on Effective Teaching and Learning (CSIP Goal 2)

- Accelerated Reader (AR) Goals/Incentives
- iReady Reading & Math
- Classroom Observations of Teaching Strategies:
 - Questioning to Check for Understanding
 - Positive Feedback
 - Group Work/Buddies
 - Graphic Organizers

Focusing on Collaborative Climate and Culture (CSIP Goal 3)

- Recognize positive moments observed in classroom by peers at Staff Meetings during Eagle Walk Observations/Training

Focusing on Alignment of Standards, Curriculum, and Assessment (CSIP Goal 4)

- Annual & New IEPs: Goals Aligned to Standards.

Focusing on Equity and Access (CSIP Goal 5)

- Continued Attendance High Fives and Fist Bumps
- MU Pre-Employment Specialists and Vocational Rehabilitation Representatives meeting with High School Students.
- Attendance Follow-ups:
 - After 2 consecutive absences or 5 absences a quarter.

CALENDAR

- Timeline started for 19 Special Education Referrals
- 5 Transfers in the last month

MARCH BOARD REPORT

ADMINISTRATOR: Lanna Tharp, Assistant Supt.

PK-12: CURRENT ENROLLMENT: 1320

Focusing on Leadership (CSIP Goal 1)

- *Leading book study with admin: Lead From Where You Are*
- Women in Leadership Conference
- APPTGY Conference
- MASA finance workshop
- PAT supervisor training

Focusing on Effective Teaching and Learning (CSIP Goal 2)

- Posted current job openings, seeing effective teachers.
- Talk to Read Grant in initial stages

Focusing on Collaborative Climate and Culture (CSIP Goal 3)


- Attended several LHS Girls' Basketball games
- All teachers were offered a "Kick-Back" Day, as a result of our Teacher Retention Grant. Subs will be provided.
- Parents as Teachers Advisory Board Meeting

Focusing on Alignment of Standards, Curriculum, and Assessment (CSIP Goal 4)

- Title I teachers administered the ACCESS and it has been shipped back to testing company

Focusing on Equity and Access (CSIP Goal 5)

- Grants in progress:
 - Homeless
 - Immigrant
 - GEERS II
 - Mental Health
 - Feminine Hygiene Grant



**HAPPY BOARD
APPRECIATION
MONTH!**