



Schenectady

City School District

Capital Project Public Meeting

April 4, 2023

April 6, 2023

April 17, 2023

April 18, 2023

April 20, 2023

Schenectady Revitalization Plan: 2030



ENGAGE • IMAGINE • INSPIRE

Update

1. Intro
2. Schenectady Revitalization Plan: 2030
3. Funding Capital Improvement Projects
4. Ongoing Projects Update



CAPITAL PROJECT



REFERENDUM

PUBLIC INFORMATION MEETINGS

Schenectady Revitalization Plan 2030

The Schenectady City School District will present to the community a \$300 million capital project referendum that would bring renovations, upgrades and the revitalization of Schenectady schools over the next seven years with no impact on taxes.

The plan includes extensive work to eight schools as well as central kitchen upgrades and needs identified in the most recent Building Condition Survey (BCS).



UPCOMING INFORMATION SESSIONS

We are holding four **INFORMATION SESSIONS** at which the details of the plan will be shared and questions will be answered.

TUESDAY	THURSDAY	TUESDAY	THURSDAY
APRIL 4	APRIL 6	APRIL 18	APRIL 20
6 P.M.	6 P.M.	5:30 P.M.	5 P.M.
MCCHESNEY ROOM	CENTRAL PARK	MONT PLEASANT	ONEIDA
DOWNTOWN LIBRARY	MIDDLE SCHOOL	MIDDLE SCHOOL	MIDDLE SCHOOL



The proposal will require super-majority (60%) approval.

The vote will be held May 16, the same day as the budget & school board election.

www.schenectadyschools.org



SEI

design group

ARCHITECTURE

Schenectady City School District



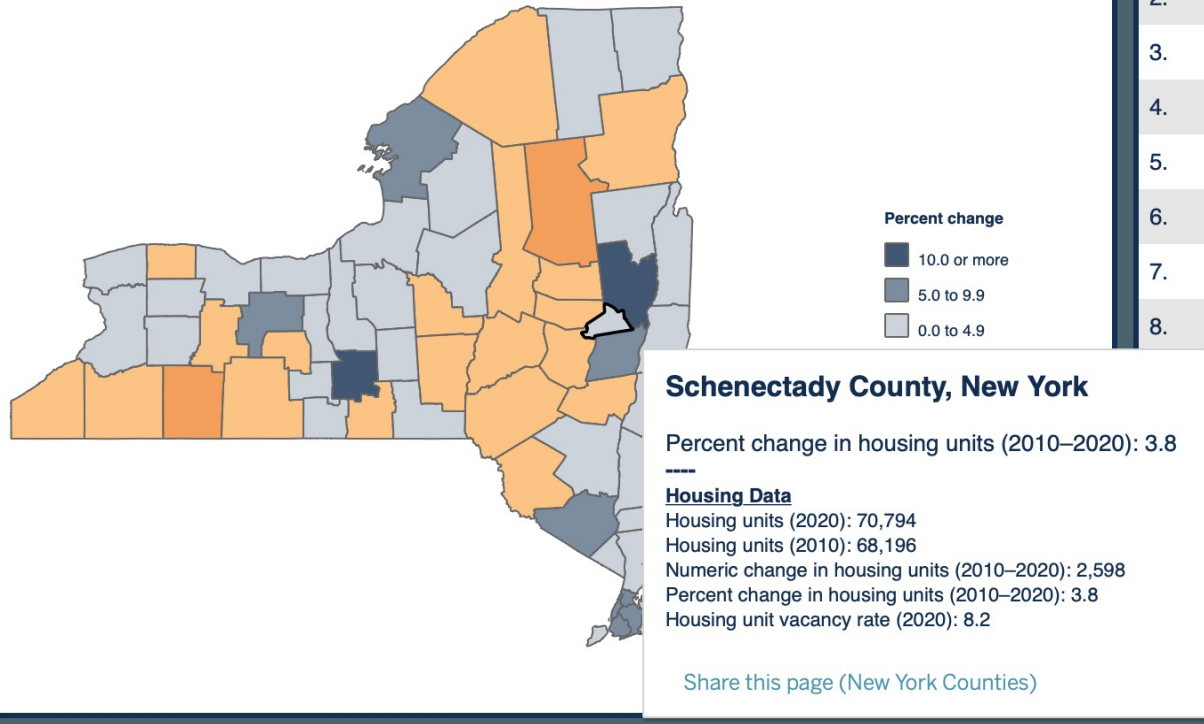
#SchenectadyRising

Reopening, rebuilding and reigniting Schenectady City Schools with a commitment and dedication to ***excellence in teaching and learning, equity, engagement and efficiency.***

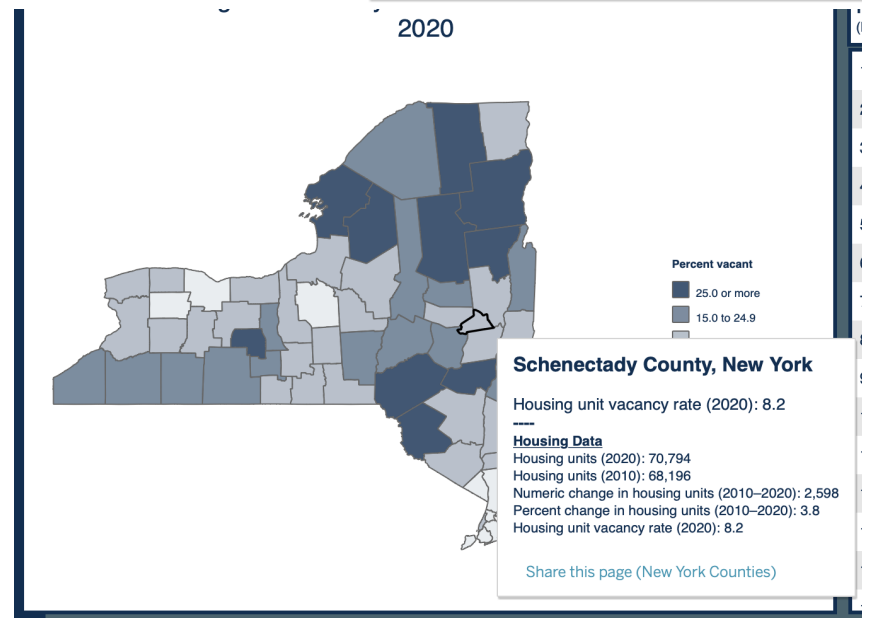
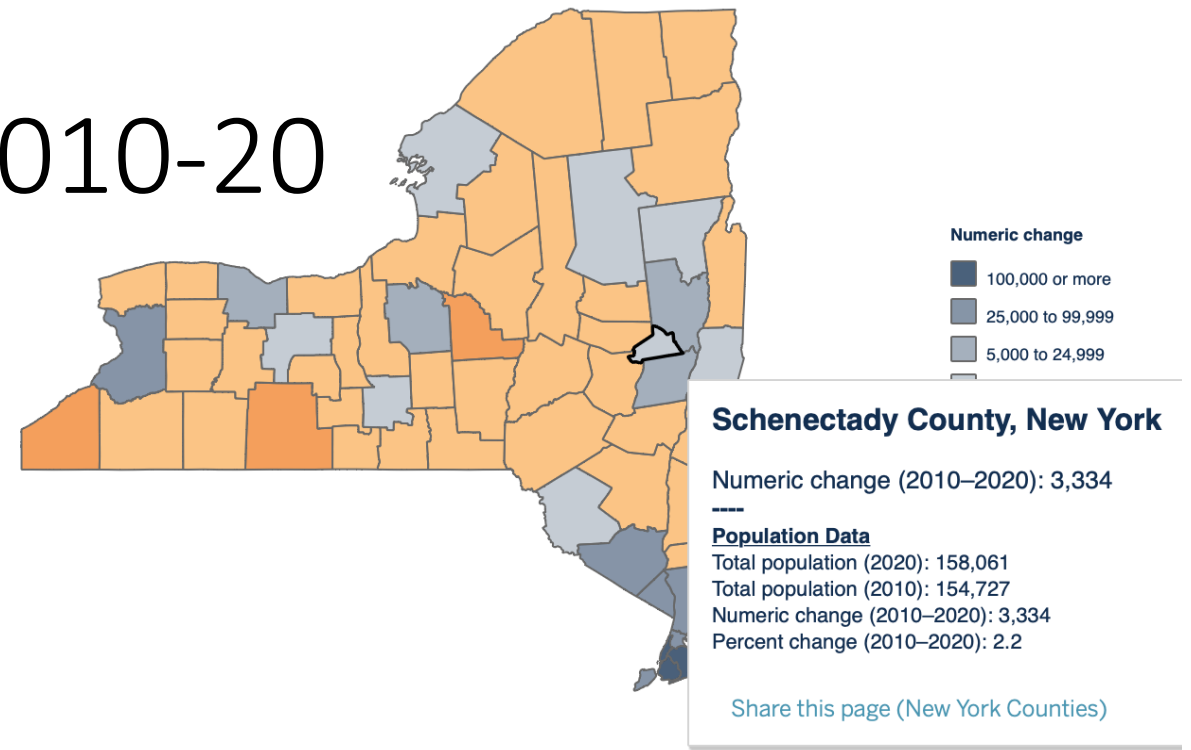
EVERYBODY COUNTS. EVERYBODY LEARNS.

Schenectady Trend Data 2010-20

Percent Change in Housing Units for New York Counties: 2010–2020



- New**
(Ranked)
- 1.
 - 2.
 - 3.
 - 4.
 - 5.
 - 6.
 - 7.
 - 8.



Schenectady, New York

Schenectady, NY

Place in: [Schenectady County, NY](#), [Albany-Schenectady-Troy, NY Metro Area](#), [New York, United States](#)

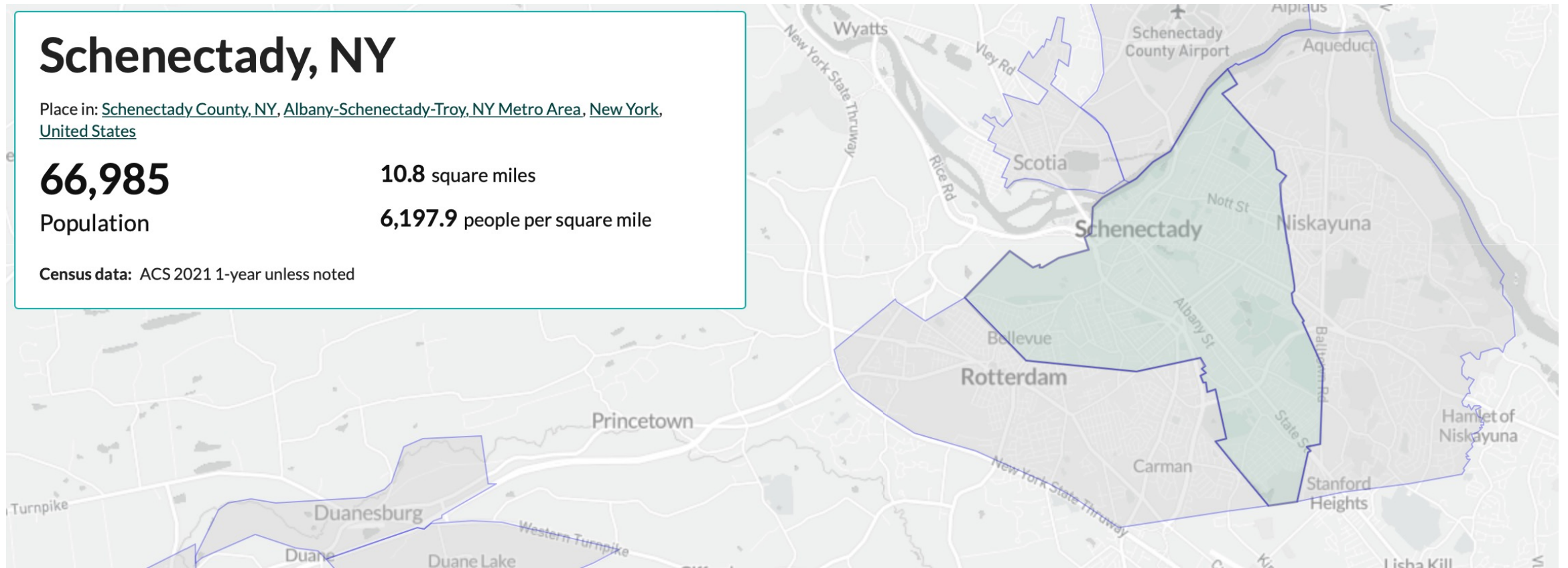
66,985

Population

10.8 square miles

6,197.9 people per square mile

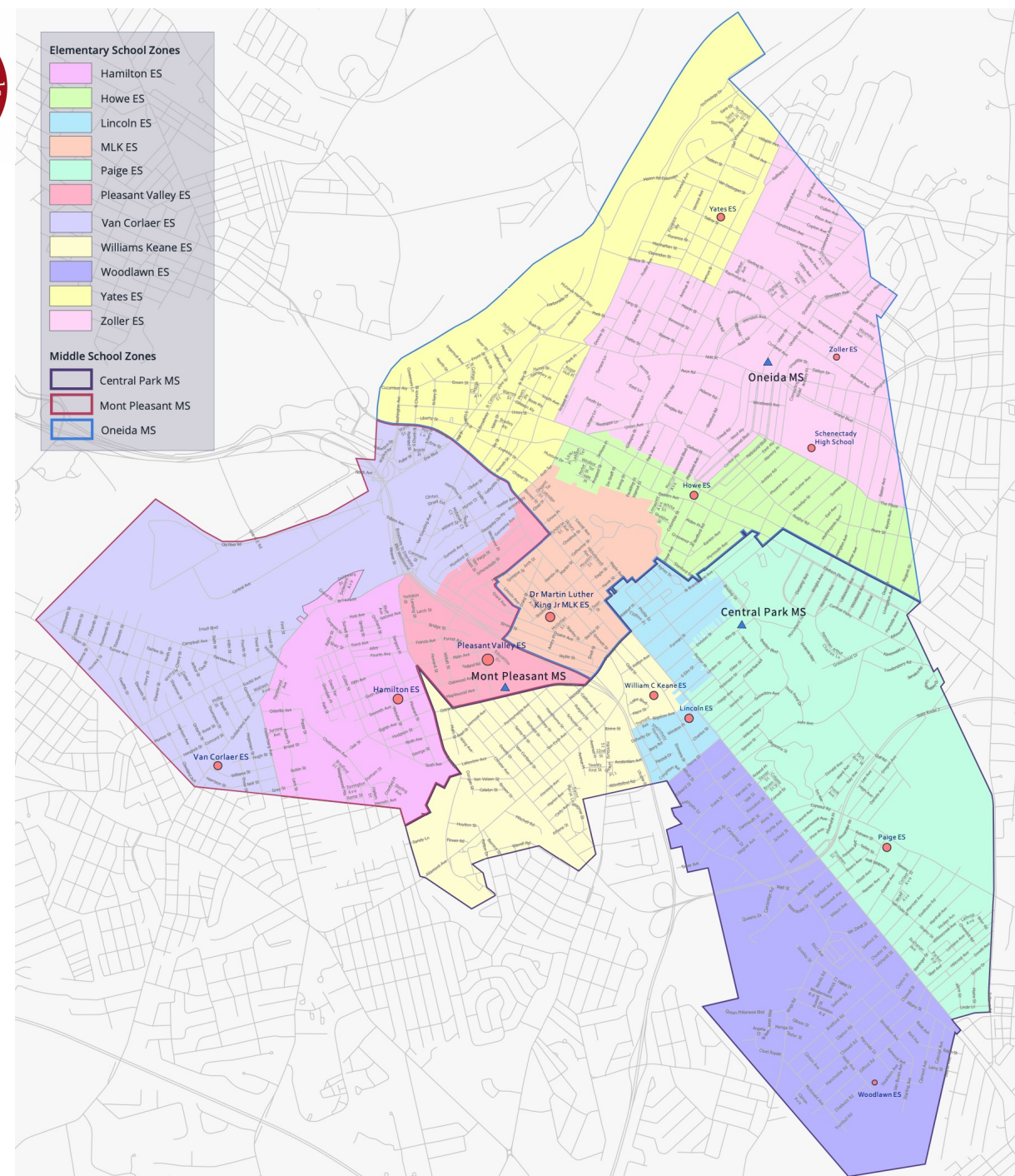
Census data: ACS 2021 1-year unless noted





Schenectady City School District

- Total Enrollment: 9,139 students PK-12
- 18 School/ Building Campuses
 - 11 Elementary Schools
 - 3 Middle Schools
 - 1 Alternative School
 - 1 Adult Education Center
 - 1 High School
 - 1 Vacant Elementary School Building
- Total Square Feet: 1,851,730 sq. ft.
- Average age of Campuses: 95



Schenectady Revitalization Plan: 2030

Age of our school buildings

CPMS- 1910

Fulton-1908

Hamilton-1913

High School- 1956

Howe- 1905

Lincoln- 1909

MLK- 1966

Mont Pleasant- 1930

Oneida- 1920

Paige- 1951

Pleasant Valley- 1919

Steinmetz- 1908

Van Corlaer – 1910

Washington Irving – 1908

W.C Keane- 1954

Woodlawn – 1972

Yates – 1913

Zoller - 1955

Average age of our school buildings

95 years old



Schenectady Revitalization Plan: 2030

Historical Work

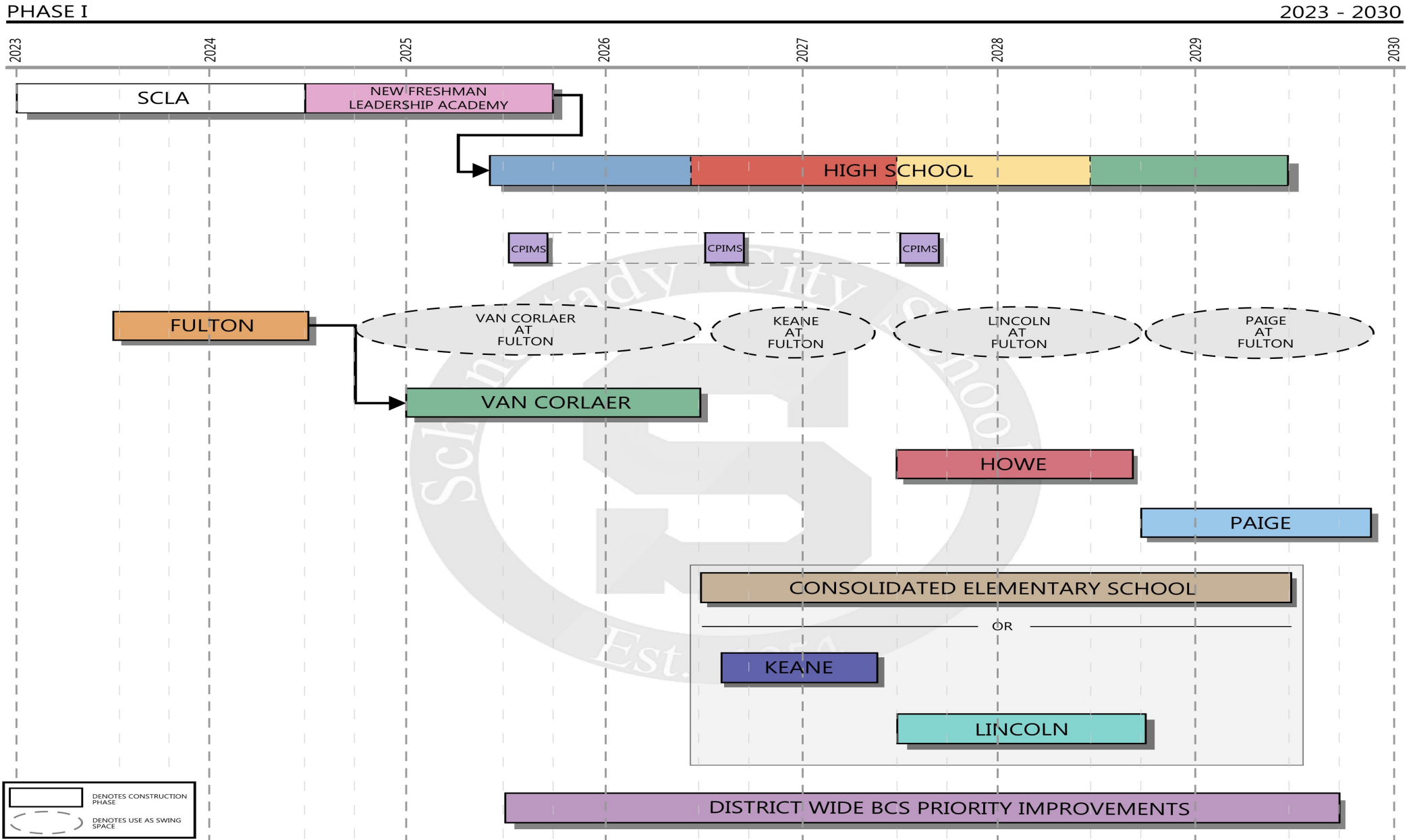
- Phase 1
 - Paige – 1 million
 - SCLA – 1.5 million
 - MPMS – 21 million
 - Oneida – 27 million
 - Central Park – 3 million
 - Howe – 9.5 million
 - Van Corlaer – 7 million
- Phase 2
 - Group A (2017- 2022)
 - Lincoln - .5 million
 - Paige – 2.8 million (Never Done)
 - SHS – 4.1 million
 - VC – 1.1 million (Never Done)
 - Zoller – 3.5 million
 - Group B
 - MLK – 13. 1 million
 - Woodlawn – 13.3 million
 - Group C
 - Hamilton – \$9.6 million
 - Pleasant Valley – 7.9 million
 - Yates – 8.1 million
- Phase 1 \$70 million & Phase 2 \$64.5 Million = **\$134.5 million**
 - **This construction project is coming to close.**

Schenectady Revitalization Plan: 2030

- SHS – 126 million
- Central Park – 25 million
- Steinmetz Campus – 25 million
- Van Corlaer – 11 million
- Lincoln – 12 million
- Paige – 6 million
- Howe - 13 million
- Fulton (Keane) – 7 million
- Central Kitchen – 15 million
- District-Wide BCS priority improvements (\$60 million)
- **Total \$300 Million**



Schenectady Revitalization Plan: 2030

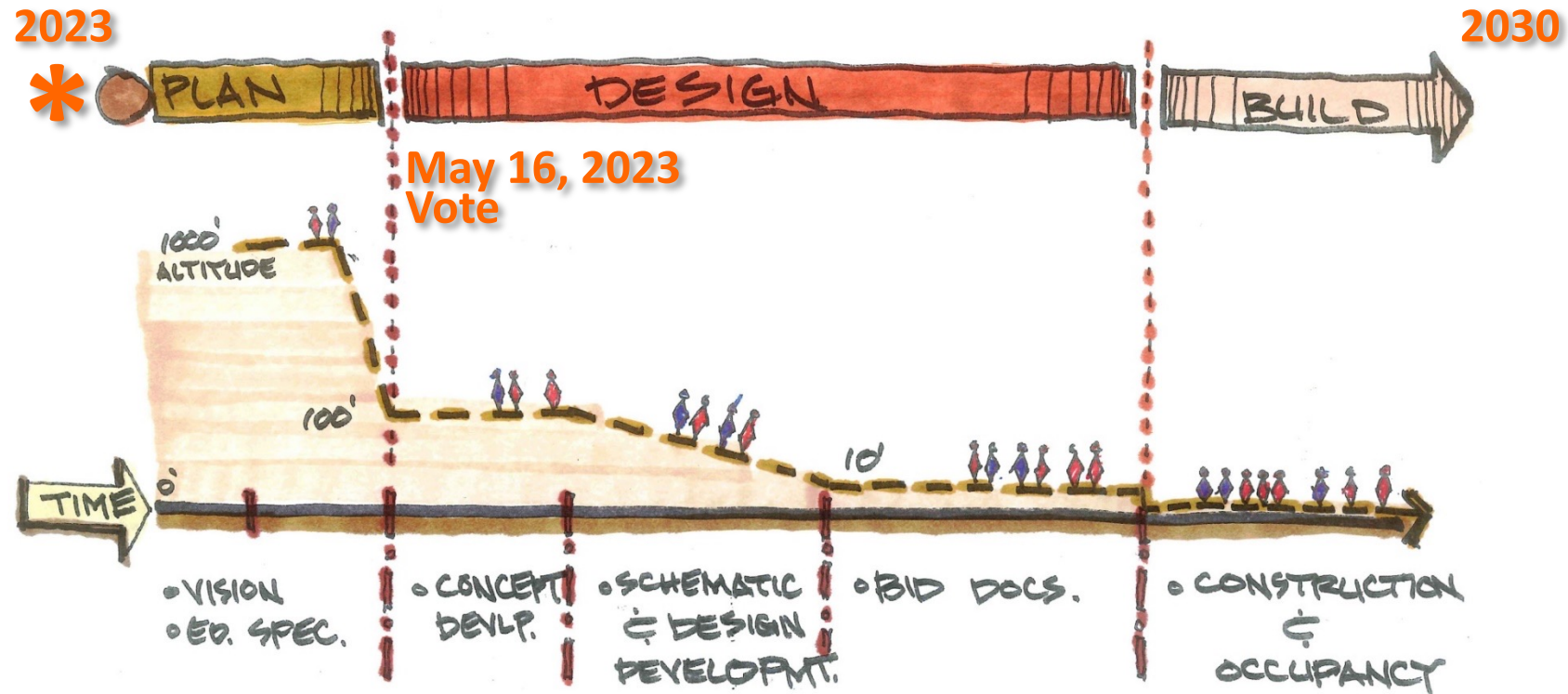


Schenectady Revitalization Plan: 2030

Where do we Go From Here??

Project Pre-planning

Project process from large to small....



BCS: Summaries

1 Hamilton Elementary School -0-008		Total
ALTERATIONS	General Construction	\$2,964,300
	Incidental	\$1,477,100
ADDITIONS	General Construction	\$0
	Incidental	\$0
		\$4,441,400

2 Yates Magnet Elementary School -0-024		Total
ALTERATIONS	General Construction	\$23,681,600
	Incidental	\$8,379,200
ADDITIONS	General Construction	\$0
	Incidental	\$0
		\$32,060,800

3 Paige Elementary School -0-018		Total
ALTERATIONS	General Construction	\$16,090,100
	Incidental	\$5,184,600
ADDITIONS	General Construction	\$0
	Incidental	\$0
		\$21,274,700

4 Pleasant Valley Elementary School -0-019		Total
ALTERATIONS	General Construction	\$6,121,600
	Incidental	\$1,839,200
ADDITIONS	General Construction	\$0
	Incidental	\$0
		\$7,960,800

5 VanCortlaer Elementary School -0-021		Total
ALTERATIONS	General Construction	\$10,832,500
	Incidental	\$3,299,700
ADDITIONS	General Construction	\$0
	Incidental	\$0
		\$14,132,200

6 Zoller Elementary School -0-025		Total
ALTERATIONS	General Construction	\$8,287,000
	Incidental	\$2,660,700
ADDITIONS	General Construction	\$0
	Incidental	\$0
		\$10,947,700

7 Woodlawn Elementary School -0-032		Total
ALTERATIONS	General Construction	\$15,015,400
	Incidental	\$4,077,300
ADDITIONS	General Construction	\$0
	Incidental	\$0
		\$19,092,700

8 Keane Elementary School -0-036		Total
ALTERATIONS	General Construction	\$7,266,100
	Incidental	\$3,406,100
ADDITIONS	General Construction	\$0
	Incidental	\$0
		\$10,672,200

9 Lincoln Elementary School -0-011		Total
ALTERATIONS	General Construction	\$10,547,600
	Incidental	\$3,316,900
ADDITIONS	General Construction	\$0
	Incidental	\$0
		\$13,864,500

10 Fulton Early Childhood Education -0-006		Total
ALTERATIONS	General Construction	\$7,956,000
	Incidental	\$2,002,500
ADDITIONS	General Construction	\$0
	Incidental	\$0
		\$9,958,500

11 Howe Early Childhood Education -0-010		Total
ALTERATIONS	General Construction	\$3,715,900
	Incidental	\$1,077,400
ADDITIONS	General Construction	\$0
	Incidental	\$0
		\$4,793,300

12 High School -0-013		Total
ALTERATIONS	General Construction	\$60,311,300
	Incidental	\$22,015,100
ADDITIONS	General Construction	\$0
	Incidental	\$0
		\$82,326,400

13 Steinmetz Career & Leadership -0-014		Total
ALTERATIONS	General Construction	\$19,491,700
	Incidental	\$5,859,800
ADDITIONS	General Construction	\$0
	Incidental	\$0
		\$25,551,500

14 Mont Pleasant Middle School -0-015		Total
ALTERATIONS	General Construction	\$14,875,100
	Incidental	\$4,403,400
ADDITIONS	General Construction	\$0
	Incidental	\$0
		\$19,278,500

15 Oneida Middle School -0-017		Total
ALTERATIONS	General Construction	\$4,995,400
	Incidental	\$1,342,800
ADDITIONS	General Construction	\$0
	Incidental	\$0
		\$6,338,200

16 Washington Irving Education Center -0-022		Total
ALTERATIONS	General Construction	\$14,082,800
	Incidental	\$3,802,000
ADDITIONS	General Construction	\$0
	Incidental	\$0
		\$17,884,800

17 Martin Luther King Magnet School -0-027		Total
ALTERATIONS	General Construction	\$5,863,700
	Incidental	\$1,661,200
ADDITIONS	General Construction	\$0
	Incidental	\$0
		\$7,524,900

18 Central Park International Magnet -0-034		Total
ALTERATIONS	General Construction	\$5,918,600
	Incidental	\$1,678,000
ADDITIONS	General Construction	\$0
	Incidental	\$0
		\$7,596,600

Total		Total
		\$315,699,700

Security Needs: Summaries

Schenectady City Schools/Day Automation Building Security Status

Updated: 1/3/23

Building	Day Building Lockdown	9-1-1 Lockdown Monitoring	Monitrionics			Blue Lights	Hardware for Existing PA Tie In	Local InformaCast Licensing	Cameras	IP Paging/Digital Signage	Fire Door Wireless Locks & Lockdown Tie In	IT Closet Wireless Access Control	Interior Electronic Locks	Classroom Hearing Assistance
			Audible Door Alarms w/ Exit Readers	Secure Perimeter/Intrusion										
Schenectady HS					\$24,000			\$827,560	\$1,435,817					
Mont Pleasant MS			\$291,876		\$18,000			\$442,948	\$768,515					
Oneida MS			\$138,461		\$16,000			\$234,604	\$407,038					
Central Park MS			\$171,166		\$16,000			\$220,000	\$381,700					
Steinmetz (SCLA)			\$193,273		\$16,000			\$253,242	\$439,375					
Elmer Ave. ES					\$75,000	\$12,000		\$83,972	\$145,691					
Fulton ES					\$115,000	\$12,000		\$133,184	\$231,074					
Hamilton ES					\$85,000	\$12,000		\$103,228	\$179,101					
Howe ES									\$238,431					
Lincoln ES					\$115,000	\$12,000		\$113,916	\$197,644					
MLK ES					\$60,000	\$12,000		\$115,480	\$200,358					
Paige ES					\$60,000	\$12,000		\$124,106	\$215,324					
Pleasant Valley ES					\$110,000	\$12,000		\$88,476	\$153,506					
Van Cortlaer ES					\$110,000	\$12,000		\$136,670	\$237,122					
W.C. Keane ES					\$75,000	\$12,000		\$177,032	\$307,151					
Woodlawn ES					\$12,000			\$111,560	\$193,557					
Yates ES					\$75,000	\$12,000		\$79,200	\$137,412					
Zoller ES														
Washington Irving														
Totals					\$1,674,777	\$222,000		\$3,245,178	\$6,063,985					\$11,205,940

Color Key	
	PD Issued - In Process or Complete
	Proposal Delivered - Awaiting PD
	Budget Requested
	Formal Proposal Requested
	Not Applicable
	Not Addressed

Notes	
1.	Budgets do not include 2nd shift labor
2.	Budgets do not include door replacement or door hardware repairs
3.	Budgets do not include pricing escalations over time
4.	Budgets do not include asbestos or other hazardous material abatement
5.	Budgets do not include demo of existing system(s)
6.	Budgets do not include any network switches or racks





INSPIRE



IMAGINE



ENGAGE

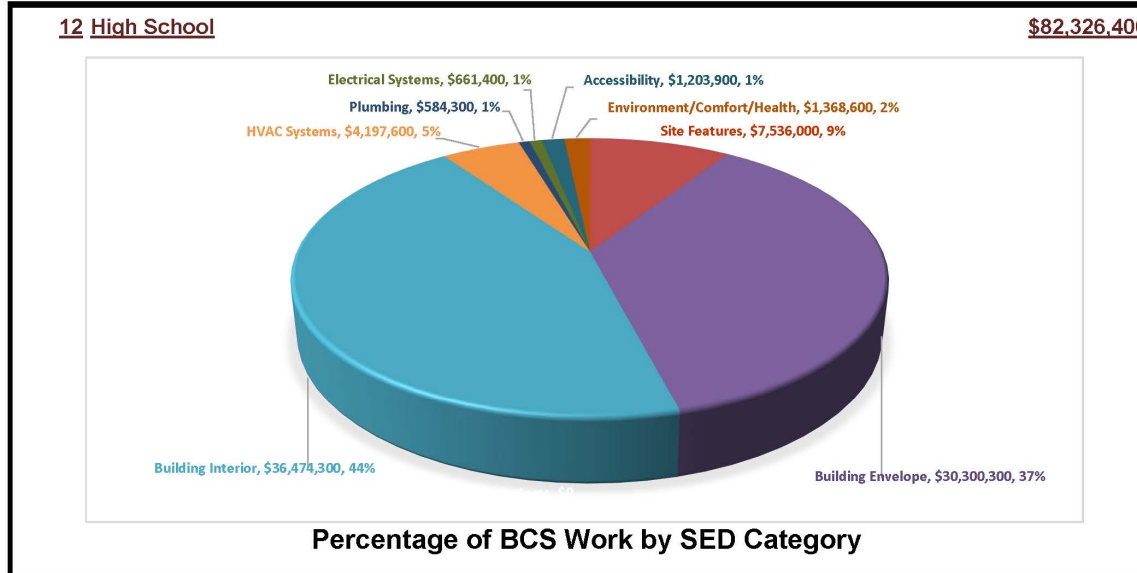


Schenectady Revitalization Plan: 2030

Schenectady High School

BCS needs include (but are not necessarily limited to):

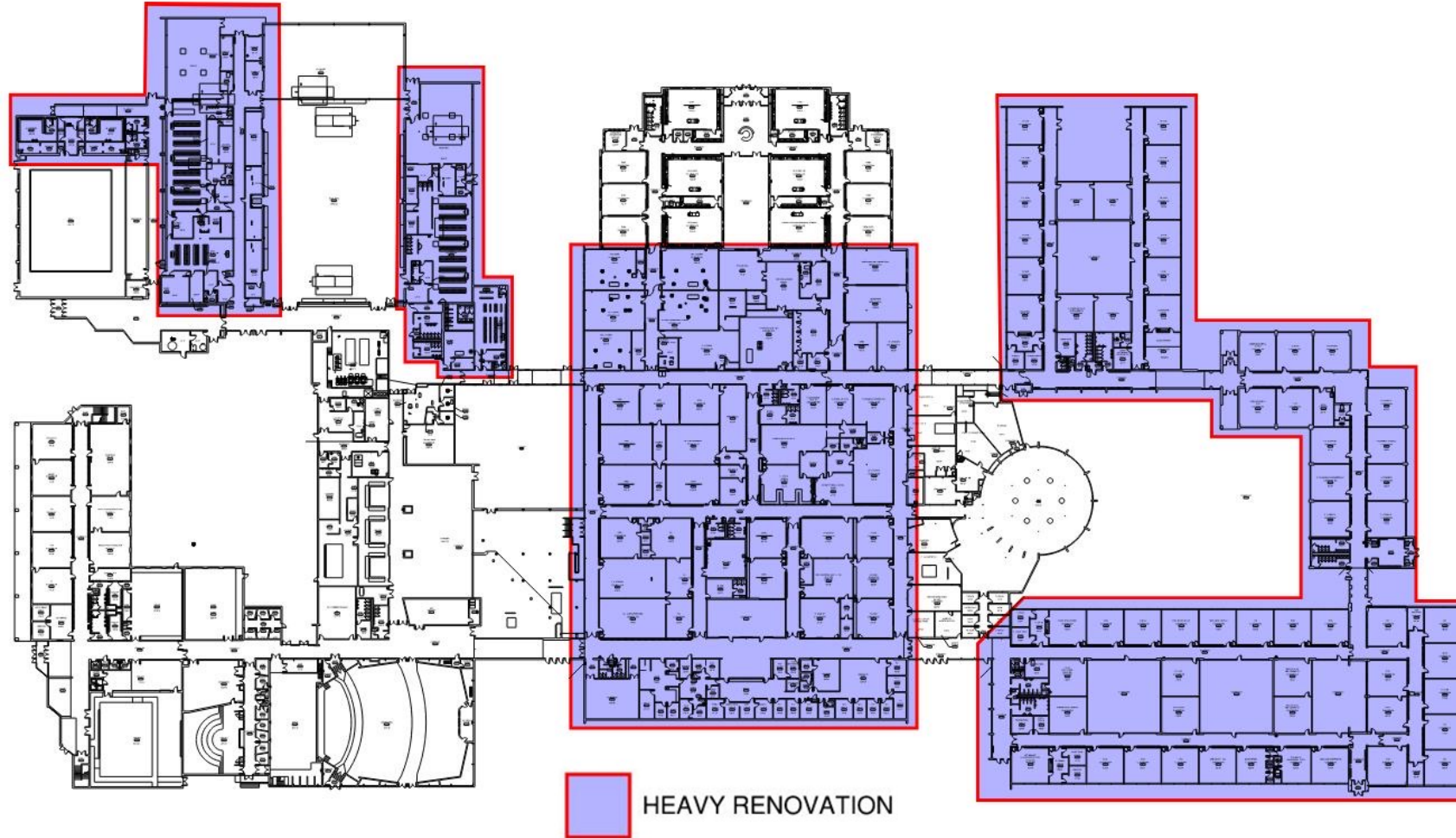
- Program improvements
- Arrival and departure
- Main Office
- CTE Classrooms
- Athletics Wing Reconstruction
- Cafeteria and Kitchen
- Secure Building – Continue
- Upgrade Exterior Window System (Many Original)
- Upgrade Interior Wire Glass
- Upgrade Existing Corridors to Smoke Walls
- Replace/Repair Locker
- Upgrade Doors and Hardware
- Secure Perimeter Doors/Access
- Upgrade Interior Finishes
- Mitigate Moisture in Wing
- Renovate Locker Rooms
- Reconstruct Student/Public Toilet Rooms ADA
- ADA Accessibility Upgrades to Access and Finishes
- Renovate the Administrators Suite
- Replace AHU's
- Replace Unit Vents
- Upgrade Ventilation System
- Asphalt Replacement
- Replace concrete Walks





Schenectady Revitalization Plan: 2030

High School Reconstruction Plan

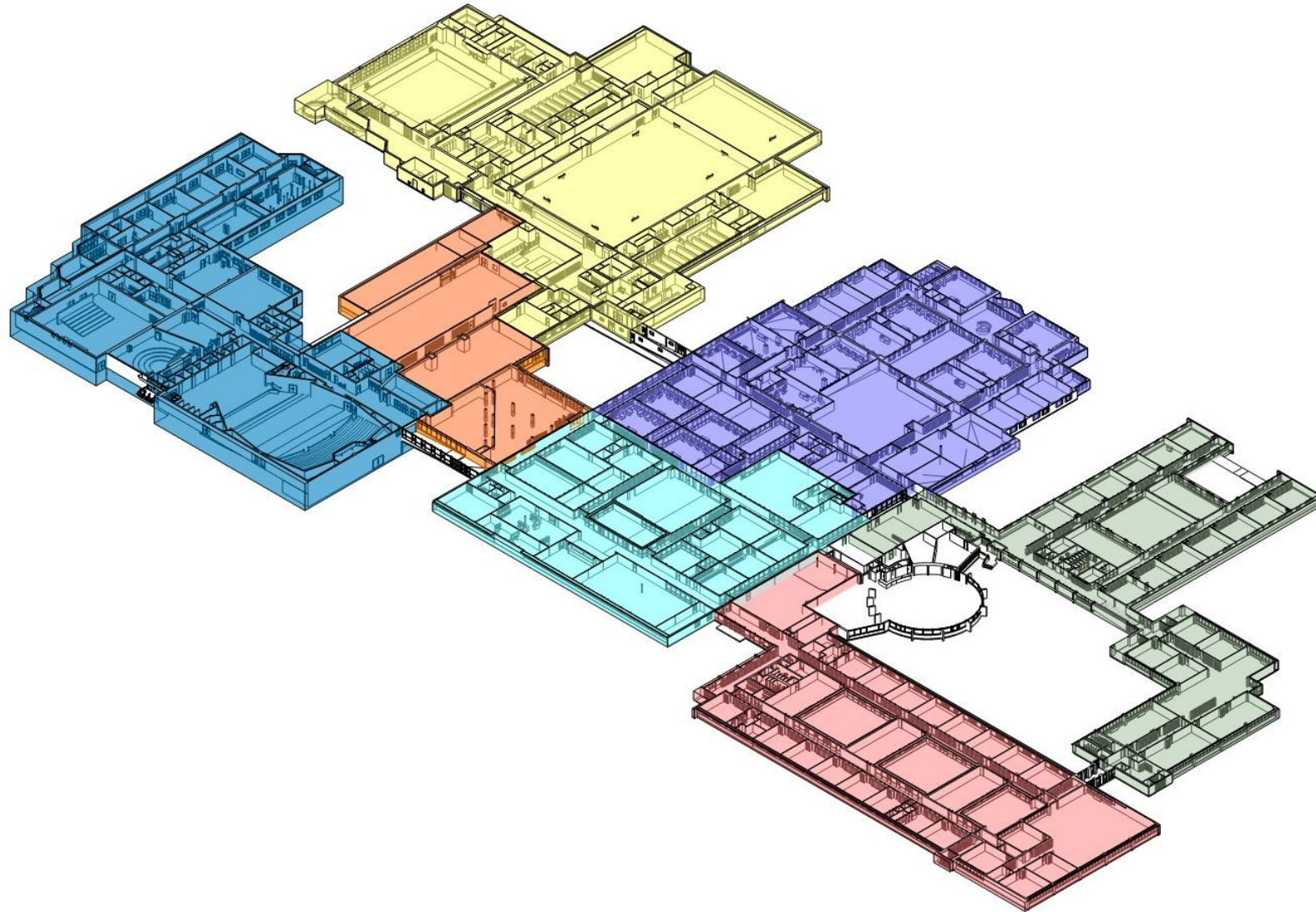


Locker Room Reno – Ref Image



Schenectady Revitalization Plan: 2030

High School Reconstruction Plan



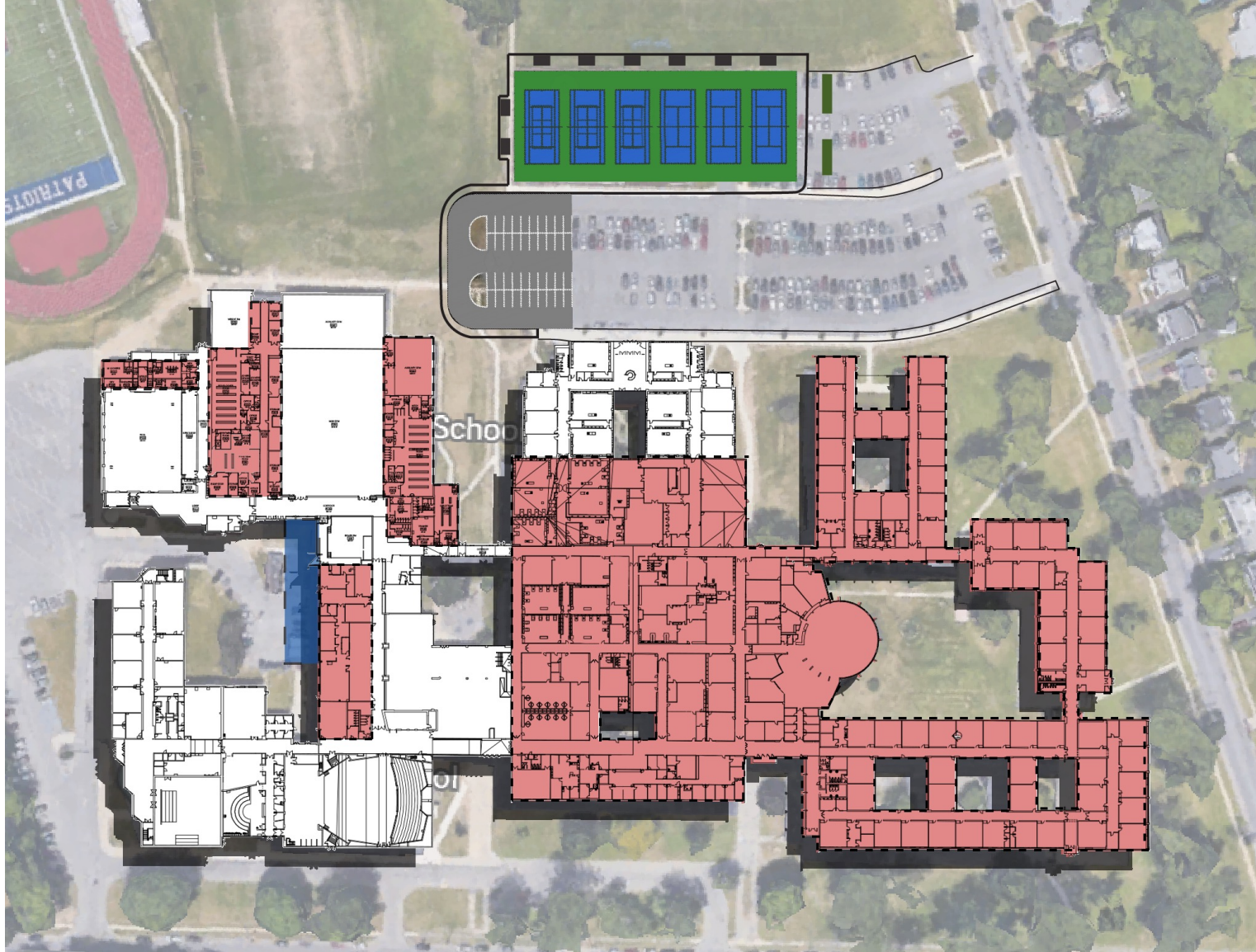
LEGEND

- BUSINESS
- HUMANITIES
- ADMINISTRATION
- STEM
- ATHLETICS
- CULINARY
- ARTS



Schenectady Revitalization Plan: 2030

High School Reconstruction Plan



	ADDITION
	HEAVY RENO REPROGRAM



INSPIRE



IMAGINE



ENGAGE

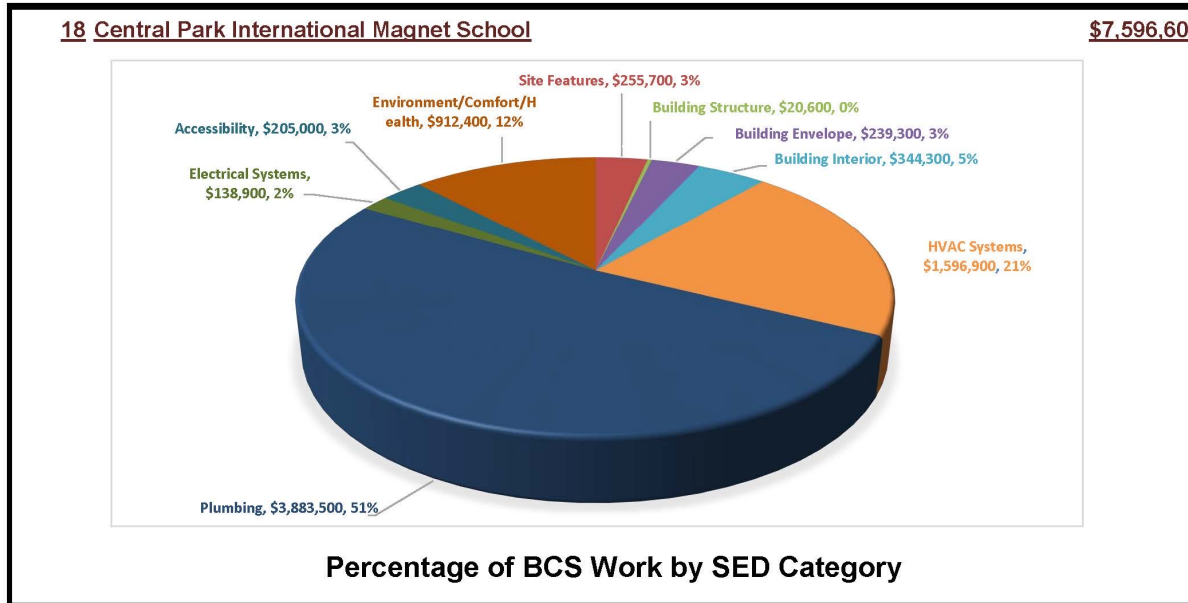


Schenectady Revitalization Plan: 2030

Central Park Middle School

BCS needs include (but are not necessarily limited to):

- Program Improvements
- Toilet Room Upgrades
- OT/PT
- Masonry Repointing
- Repair/Replace Broken Stone Caps
- Upgrade Doors and Hardware
- Remove *Deadbolts* and Provide ADA Levers
- Upgrade Floor Finishes
- Replace Ceilings
- Patch/Repair Plaster Walls and Ceilings
- Provide Ventilation
- Upgrade Hot Water Distribution System
- Upgrade Electrical Power Distribution System
- Replace Portions of Domestic Water Service
- Upgrade Sanitary Sewer System





INSPIRE



IMAGINE



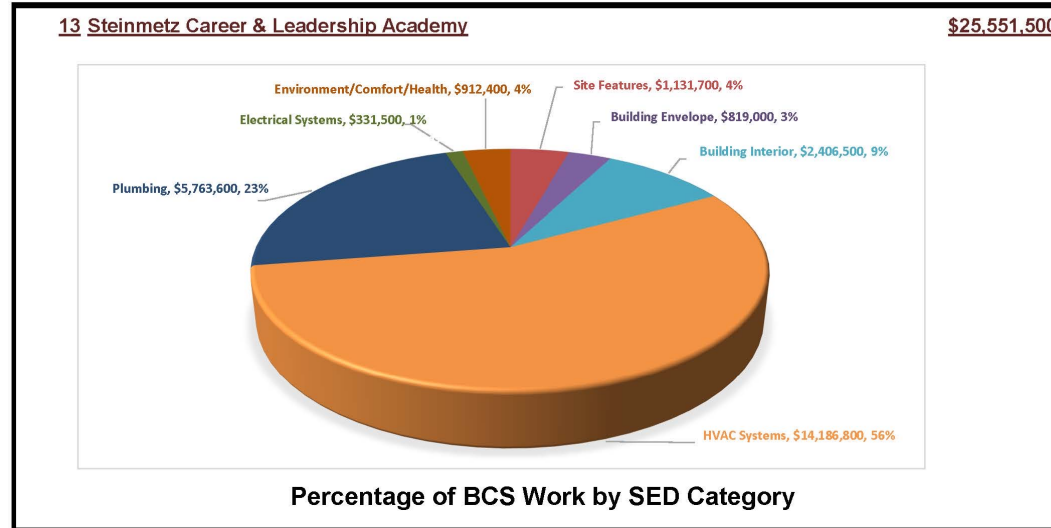
ENGAGE



Schenectady Revitalization Plan: 2030

Freshman Leadership Academy - SCLA

BCS needs include (but are not necessarily limited to):



- Program Improvements
- Science Classrooms
- Cafeteria/Kitchen (pos addition)
- Branding and Wayfinding
- Masonry Restoration - Efflorescence
- Toilet Room Upgrades
- Coordinate Site Utilities with Site Control Devices
- Provide Secure Entry Vestibule
- Repair Connector Bridges
- Replace Doors and Hardware
- Upgrade Interior Finishes
- Renovate Science Rooms
- Replace Boilers
- Upgrade Ventilation System
- New Perimeter Heating system
- Ventilate Toilet Rooms
- Upgrade Fixtures
- Replace Domestic Water Service and Sanitary Sewer
- Upgrade Fire Alarm and Building Wide Communication System



Schenectady Revitalization Plan: 2030

Freshman Leadership Academy at SCLA

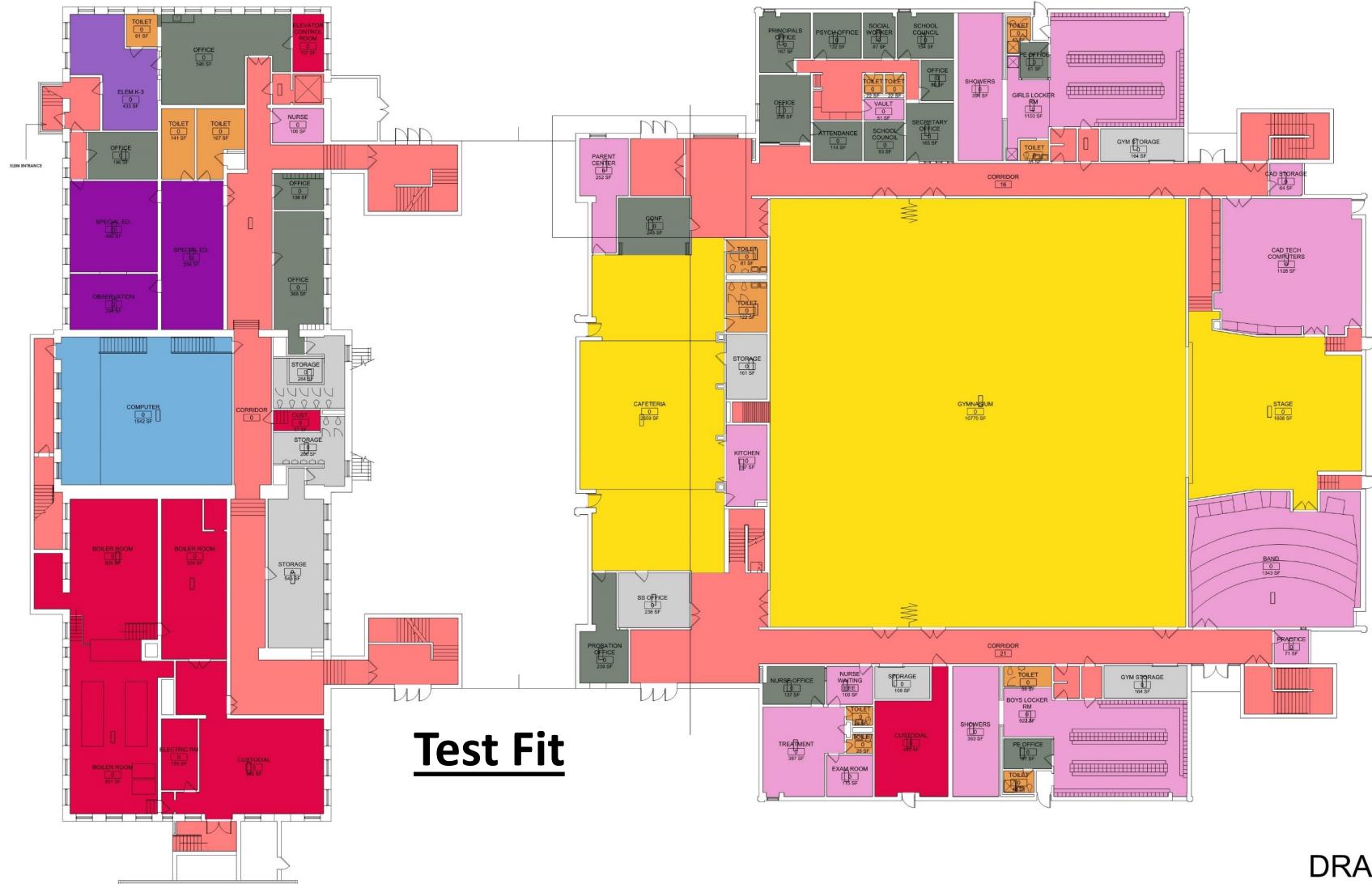
- ADDITION
- HEAVY RENO
- REPROGRAM



Test Fit

Schenectady Revitalization Plan: 2030

Freshman Leadership Academy at SCLA



Test Fit

DRAFT

1 GROUND LEVEL UTILIZATION PLAN - 9TH GRADE TEST FIT

3/22" = 1'-0"



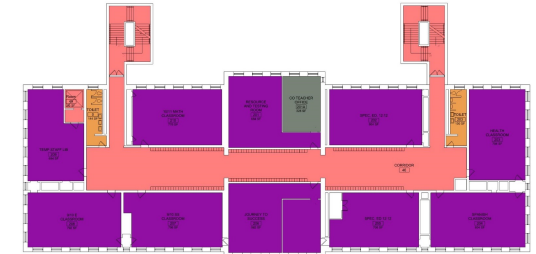


Schenectady Revitalization Plan: 2030

Freshman Leadership Academy at SCLA



1 FIRST FLOOR UTILIZATION PLAN - 9TH GRADE TEST FIT
3/32" = 1'-0"



2 SECOND FLOOR UTILIZATION PLAN 9TH GRADE TEST FIT



3 THIRD FLOOR UTILIZATION PLAN 9TH GRADE TEST FIT

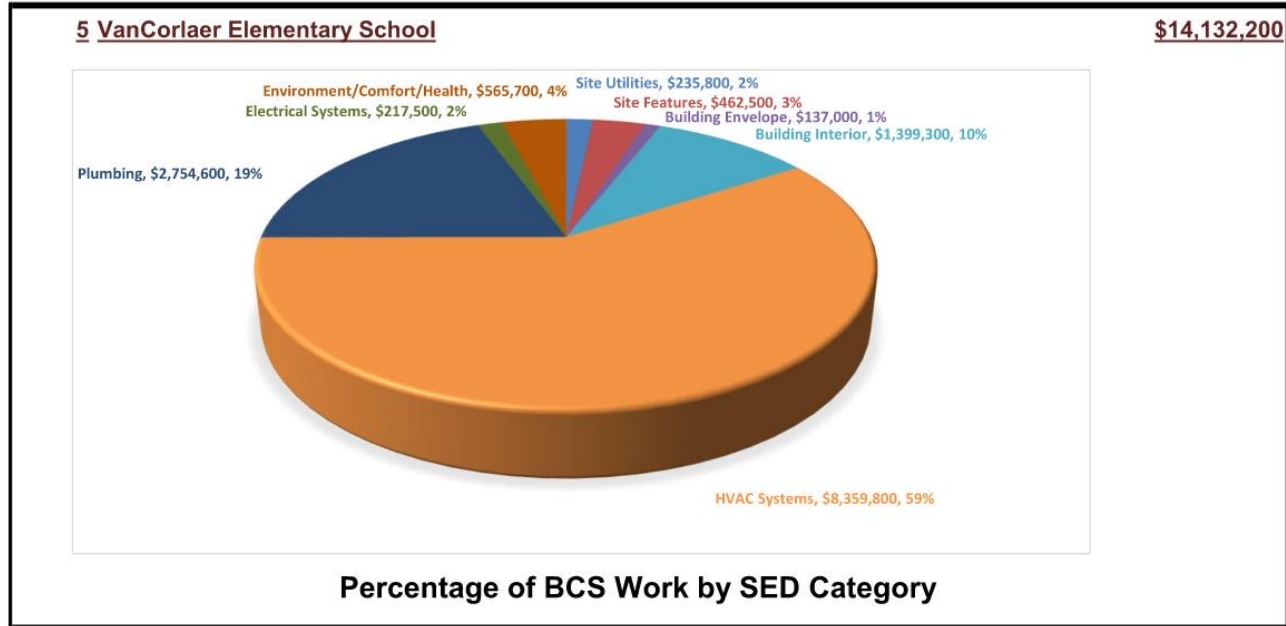
Test Fit

DRAFT



Schenectady Revitalization Plan: 2030

Van Corlaer Elementary School

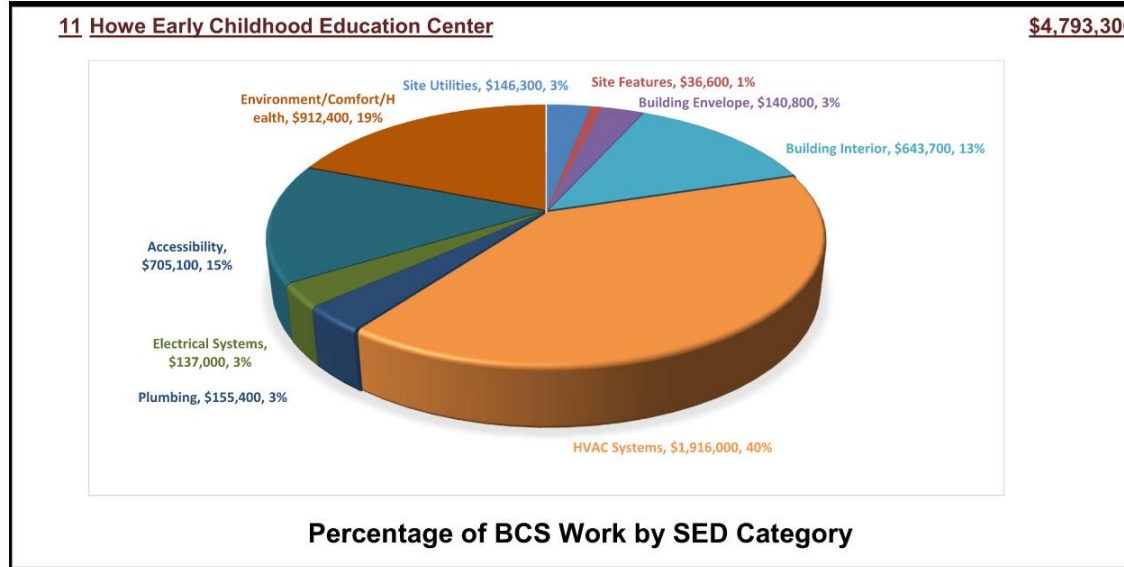
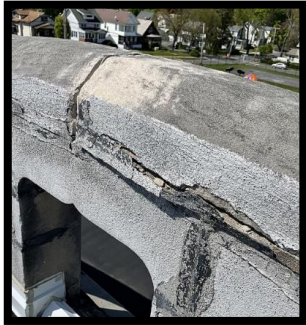


BCS needs include
(but are not necessarily limited to):

- Program Improvements
- Secure Entry
- Masonry Restoration
- Upgrade Interior Finishes
- OT/PT
- Replace Toilet Partitions
- Repair/Replace Cracking Terrazzo
- Provide Mechanical Ventilation
- Replace Boilers
- Upgrade Steam Distribution System/Radiators
- New Mechanicals Building Wide
- Upgrade Fire Alarm System
- Replace asphalt pavement in parking lot
- Replace asphalt playground behind building

Schenectady Revitalization Plan: 2030

Howe Elementary School



BCS needs include (but are not necessarily limited to):

- Program Improvements
- Secure Entry Vestibule
- Music and Art Classrooms
- Replace Concrete Steps
- Exterior Masonry Restoration
- Provide New Doors and Hardware
- Replace Flooring
- Add Kindergarten Toilet Rooms
- Replace Millwork
- AHU and Ventilation system Upgrades
- Provide Mop Sinks
- Upgrade Camera's and System
- Asphalt driveways in deteriorated condition.
- Concrete sidewalks and site walls, and chain link fencing in deteriorated condition.



INSPIRE



IMAGINE



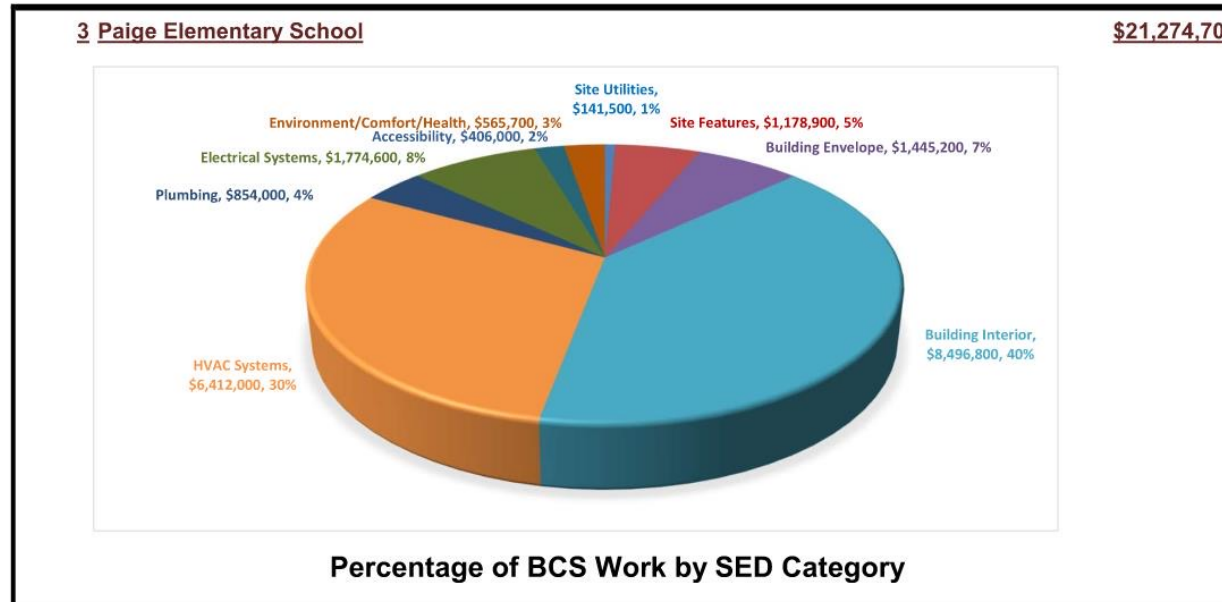
ENGAGE



Schenectady Revitalization Plan: 2030

Paige Elementary School

BCS needs include (but are not necessarily limited to):



- Program Upgrades
- Counseling Suite
- Create a Secure Vestibule
- Masonry Restoration
- Replace Doors and Hardware
- Interior Deadbolts to be removed and replaced
- Exterior Window System Replacement
- Floor Finish Upgrades
- Replace Gym Partition
- Upgrade Existing Classroom Finishes
- Electric Service Upgrades
- Replace Hot Water System
- Provide New Ventilation
- Upgrade Fire Alarm System





INSPIRE



IMAGINE



ENGAGE



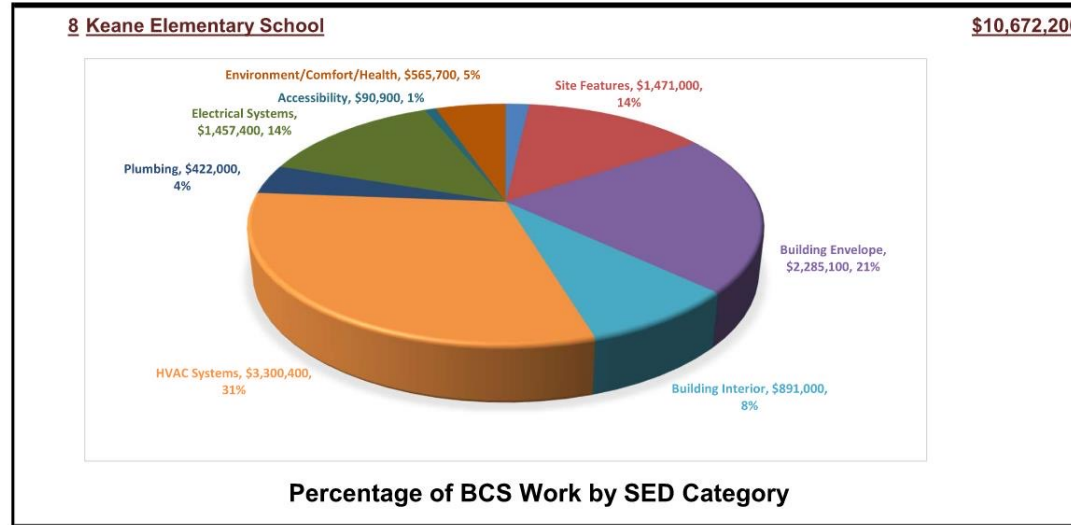
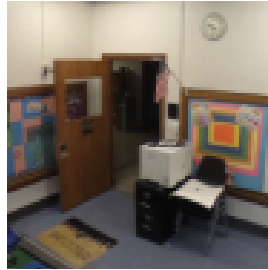
Schenectady Revitalization Plan: 2030

W. C. Keane – Purchase or Continue to Lease

BCS needs include (but are not necessarily limited to):

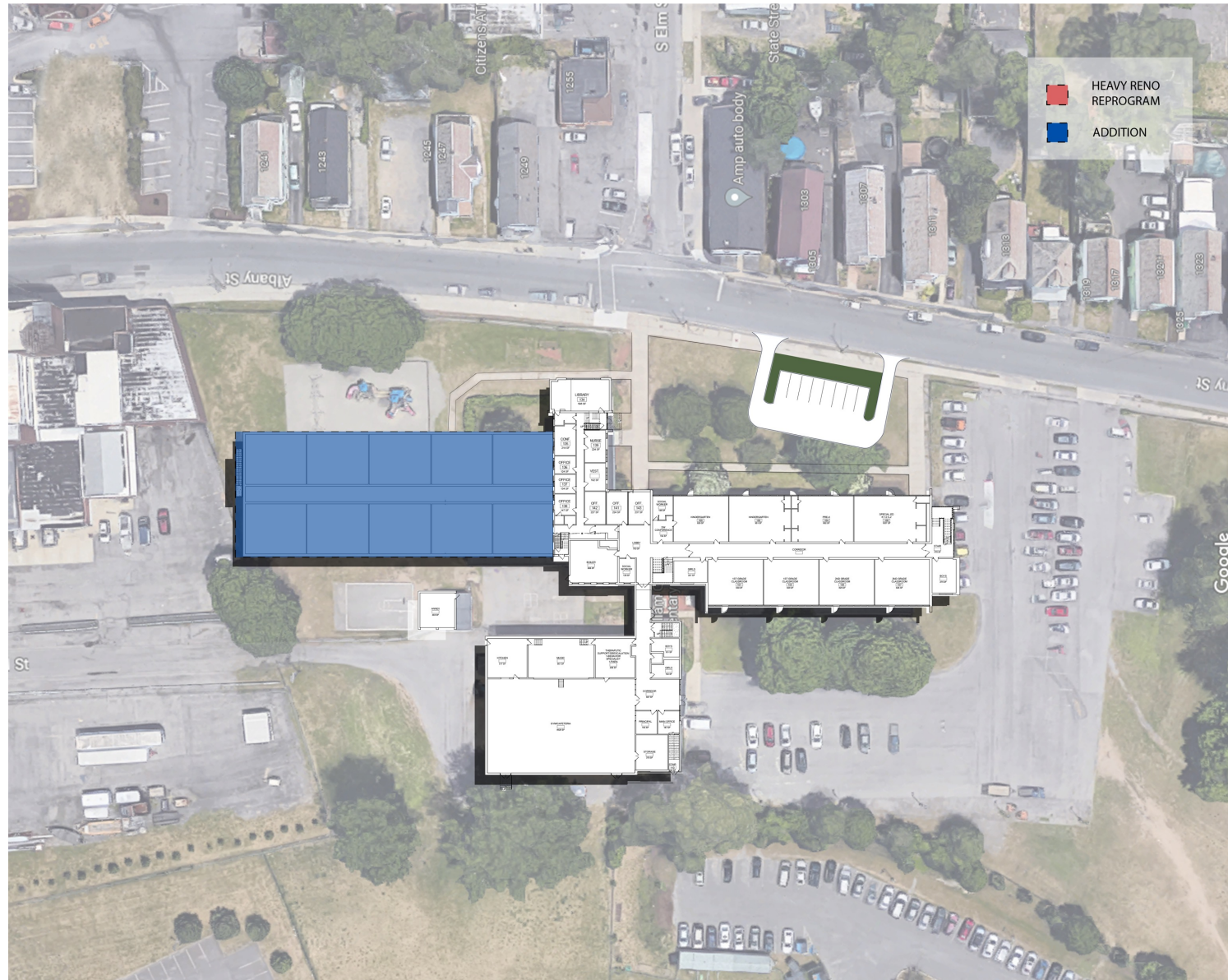
Program Improvements **

- Secure Entry Vestibule
- All building entry steps in deteriorated condition
- Masonry Restoration
- Scrape and Paint Masonry Lintels
- Replace Window System
- Roof Replacements (3 Areas)
- Replace Doors and Hardware
- Upgrade/Replace Floor Finishes
- Replace AHU
- Provide Ventilation Upgrades
- Upgrade Mechanical System in Annex
- Upgrade Sanitary Waste System
- Replace Plumbing Fixtures
- Electrical Power Distribution System



Schenectady Revitalization Plan: 2030

William C. Keane School Reconstruction Plan



IF we purchase.





INSPIRE



IMAGINE



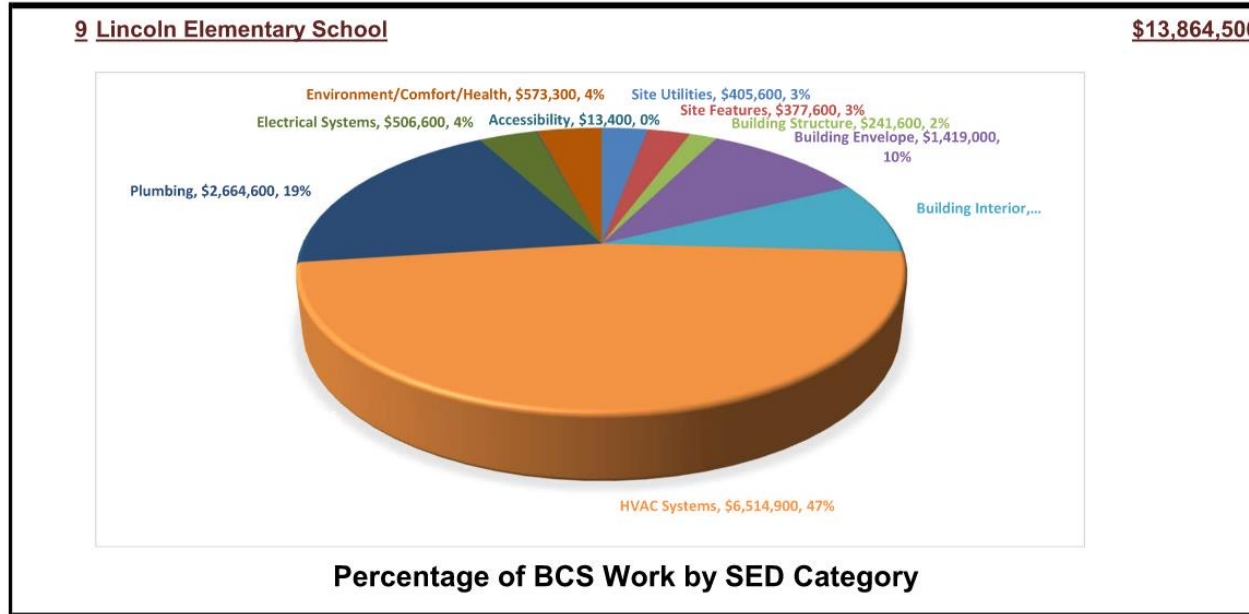
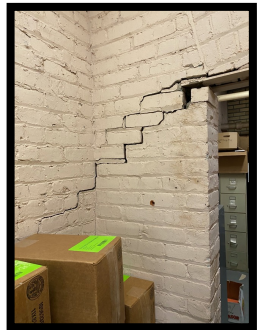
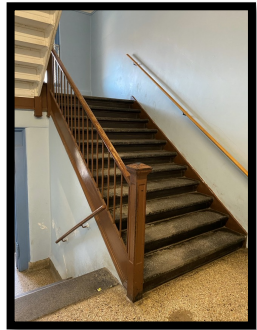
ENGAGE



Schenectady Revitalization Plan: 2030

Lincoln Elementary Community School

BCS needs include (but are not necessarily limited to):



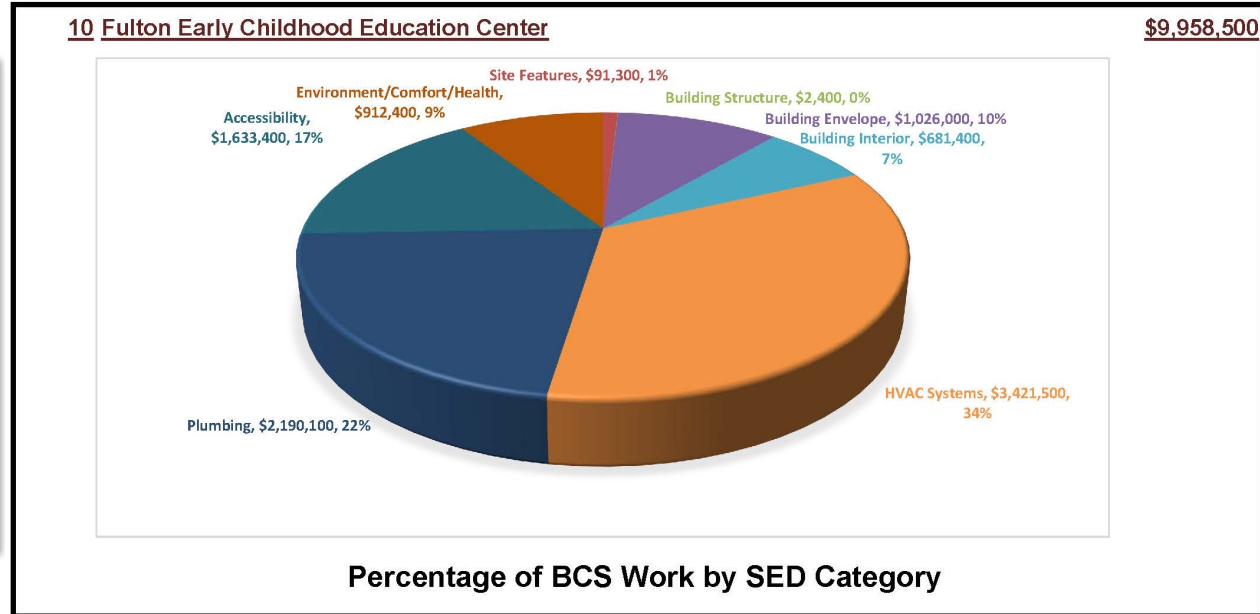
- Program Improvements
- Secure Vestibule
- Right Size Classrooms
- Stairs and Handrails – Not Code Compliant
- Masonry Restoration
- Replace Roof
- Slate Roof Repair
- Exterior Envelope Reconstruction
- Replace Spalding Cracking Plaster Ceilings
- Replace Flooring
- Replace Doors and Hardware
- Provide New Mechanical Ventilation System
- Provide New hot water distribution system
- Upgrade Electrical Power Distribution System
- South pavement in deteriorated condition
- Upgrade Playing Fields



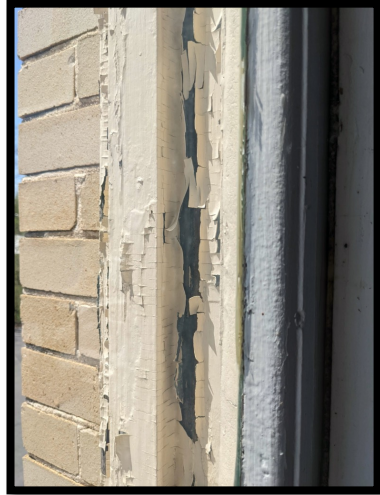
Schenectady Revitalization Plan: 2030

Fulton School - Swing Space

BCS needs include (but are not necessarily limited to):



- Program Improvements
- Secure Entry Vestibule
- Masonry Restoration
- Scape and Paint Exterior Lintels
- Address ADA Accessibility
- Upgrade Electrical Service
- Replace Exterior Window System
- Replace Doors and Hardware
- Upgrade Interior Finishes
- Renovate Gym Space
- Replace AHU's
- Replace Hot Water Distribution System
- Renovate Domestic Water
- Renovate Sanitary Sewer System
- Upgrade Plumbing Fixture
- Replace concrete and asphalt walks and pavement



INSPIRE

IMAGINE

ENGAGE



Schenectady Revitalization Plan: 2030

NYSSSED Capital Project Funding

Maximum Cost Allowance (MCA) -- This represents the maximum amount of actual expenditures upon which the State will pay Building Aid. Pursuant to Section 3602, subdivision 6, a maximum cost allowance is determined for both construction costs and for incidental costs.

The maximum cost allowance for incidentals is 25% of the maximum cost allowance for construction for secondary schools and special education, and 20% for elementary schools. In the case of a project having construction of a new addition, as well as reconstruction or alterations of an existing building, a separate maximum cost allowance is determined for the construction costs and for the incidental costs for both the addition and the reconstruction or alteration.

When a proposed project includes an addition to an existing building as well as alterations (i.e., reconstruction) of the existing building, a separate maximum cost allowance is computed for the contract costs and for the incidental costs for both the addition and for the alteration's portions of the project. (Allowable incidental costs are defined later on in this booklet.)



INSPIRE



IMAGINE



ENGAGE



Schenectady Revitalization Plan: 2030

Capital Project Funding

\$300 Mil Capital Project

Zero Tax Impact!

- MCA NYS Building aid – 98%
- Capital Reserve – 2% (\$5.5 Mil)
- Excel Aid – (\$3.7 Mil)

Ongoing Projects / Repairs

- Capital Repair Reserve Fund
 - SHS -Tennis Court
 - Fulton Boiler
 - Paige Abatement
 - Washington Irving – Water Line
- Kitchen Projects – School Lunch reserve Fund balance \$5.6 Mil
- American Rescue Funds
 - Mont Pleasant Field/Track
- Capital Outlay \$100K



INSPIRE



IMAGINE



ENGAGE



Ongoing Project Updates

BUILDING	PROJECTS	2023				2024				2025				2026				2027						
		Winter	Spring	Ref 5/16	Summer	Fall	Winter	SED 5/16	Spring	Summer	Fall	Winter	Spring	Summer	Fall	Winter	Spring	Summer	Fall					
HS	Tennis Courts																							
	Athletics Dept Aesthetic Upgrades																							
	Kitchen Upgrades																							
	Water Heater																							
Mont Pleasant	Secure Vestibule																							
	Track & Field Upgrades																							
Central Park	Upgrade Security																							
	Renovation																							
Steinmetz	Secure Vestibule																							
Fulton	Boiler Replacement																							
	Critical Upgrades																							
Lincoln	Secure Vestibule																							
	Renovation																							
Van Corlear	Renovation																							
WC Keane	Renovation/Addition																							
Wash. Irving	Domestic Waterline Replacement																							
Paige	Crawl Space Abatement																							
Hamilton	Playground Upgrades																							
	Main Office Renovation																							
MLK	Playground Upgrades																							
Pleasant Valley	Playground Upgrades																							
	Kitchen Upgrades & Cafeteria Addition																							
Woodlawn	Playground Upgrades																							





Ongoing Project Updates:



High School

- Tennis Court Reconstruction

Ongoing Project Updates:

- Mont Pleasant Athletic Fields



Scale: 1" = 50'

MONT PLEASANT MIDDLE SCHOOL
TRACK AND FIELD IMPROVEMENTS - CONCEPT PLAN
JANUARY 4TH, 2023





INSPIRE



IMAGINE

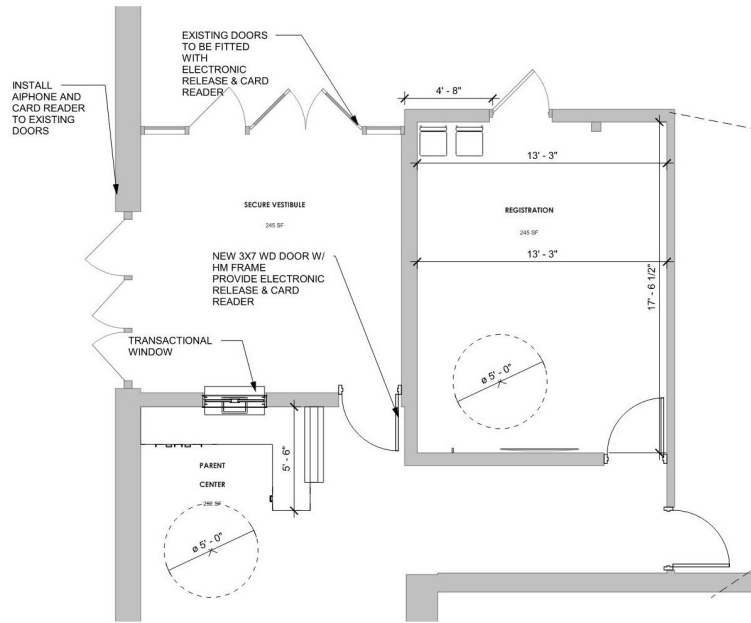


ENGAGE

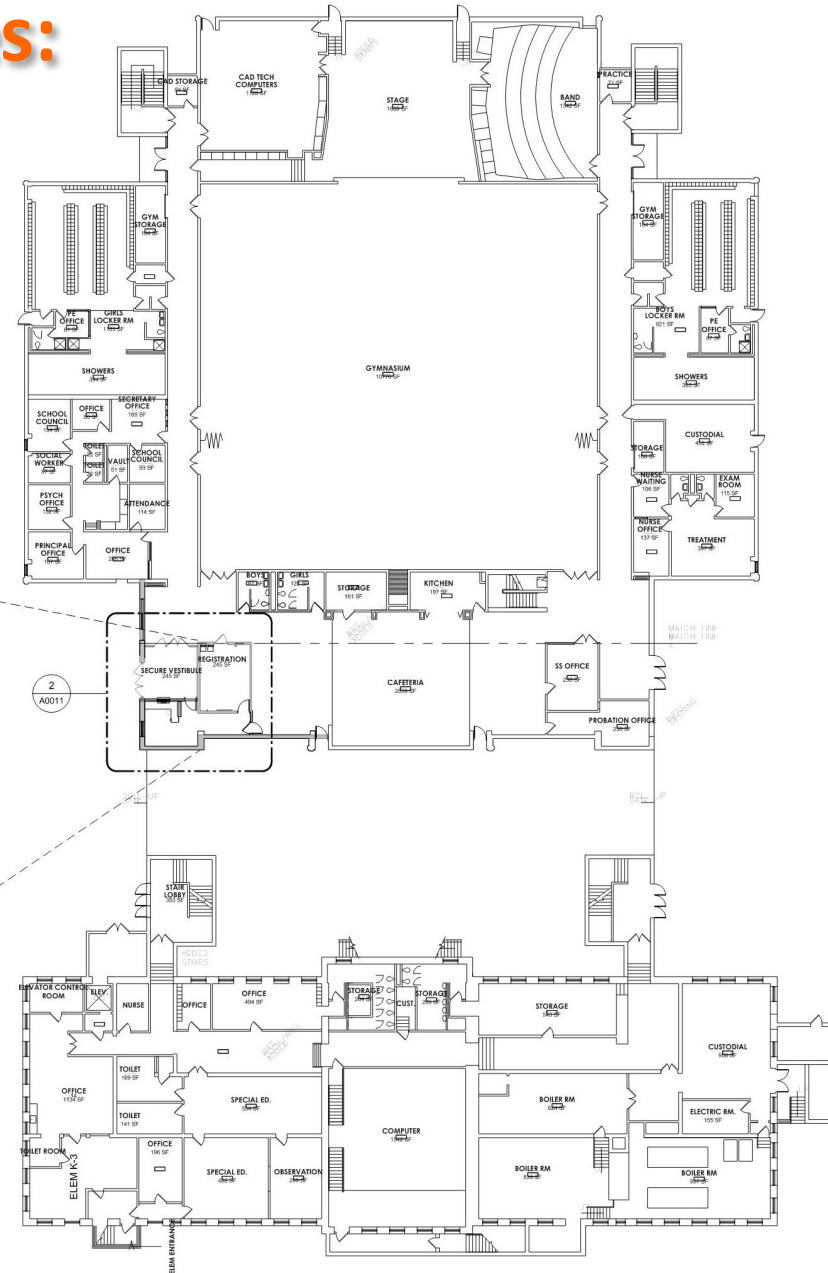


Ongoing Project Updates:

- SCLA
 - Secure Entry Vestibule



2 SECURITY VESTIBULE
1/4" = 1'-0"



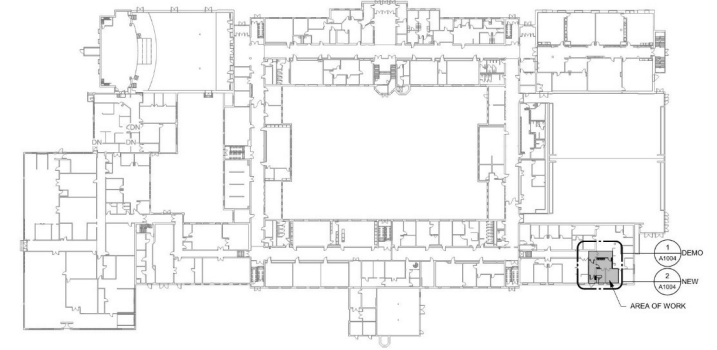
1 GROUND LEVEL - OVERALL PLAN
1" = 20'-0"



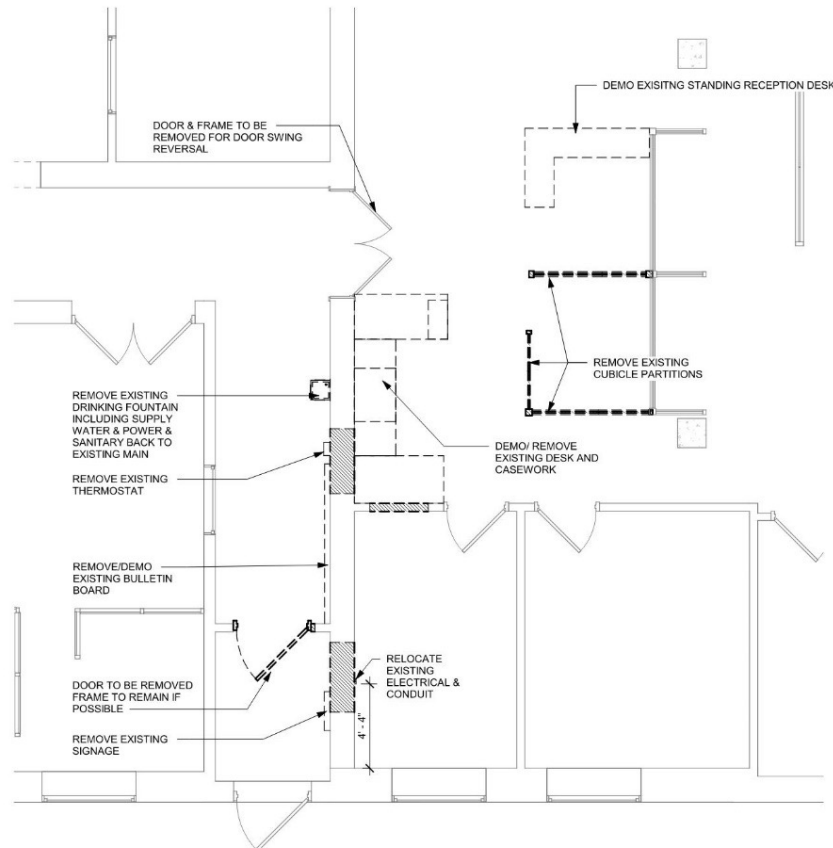


Ongoing Project Updates:

- Mont Pleasant Middle School/District Office
 - Secure Entry Vestibule

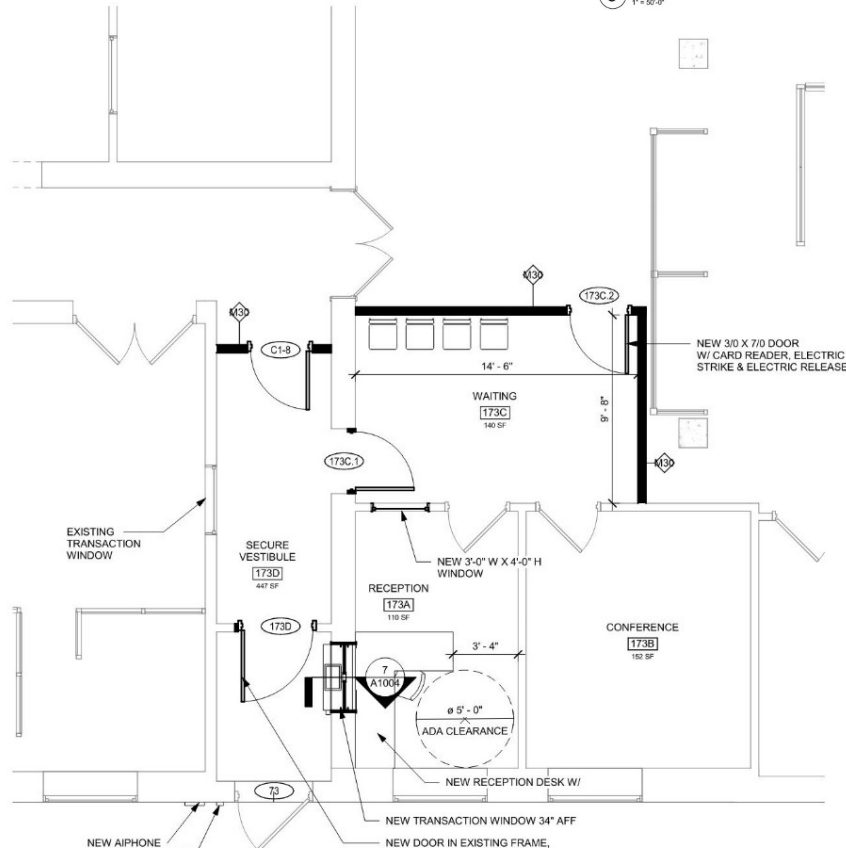


3 ANNEX
1" = 50'-0"



NOTE: COORDINATE SALVAGE AND STORAGE OF REMOVED ITEMS W/ OWNER

1 SECURE VESTIBULE - DEMO
1/4" = 1'-0"

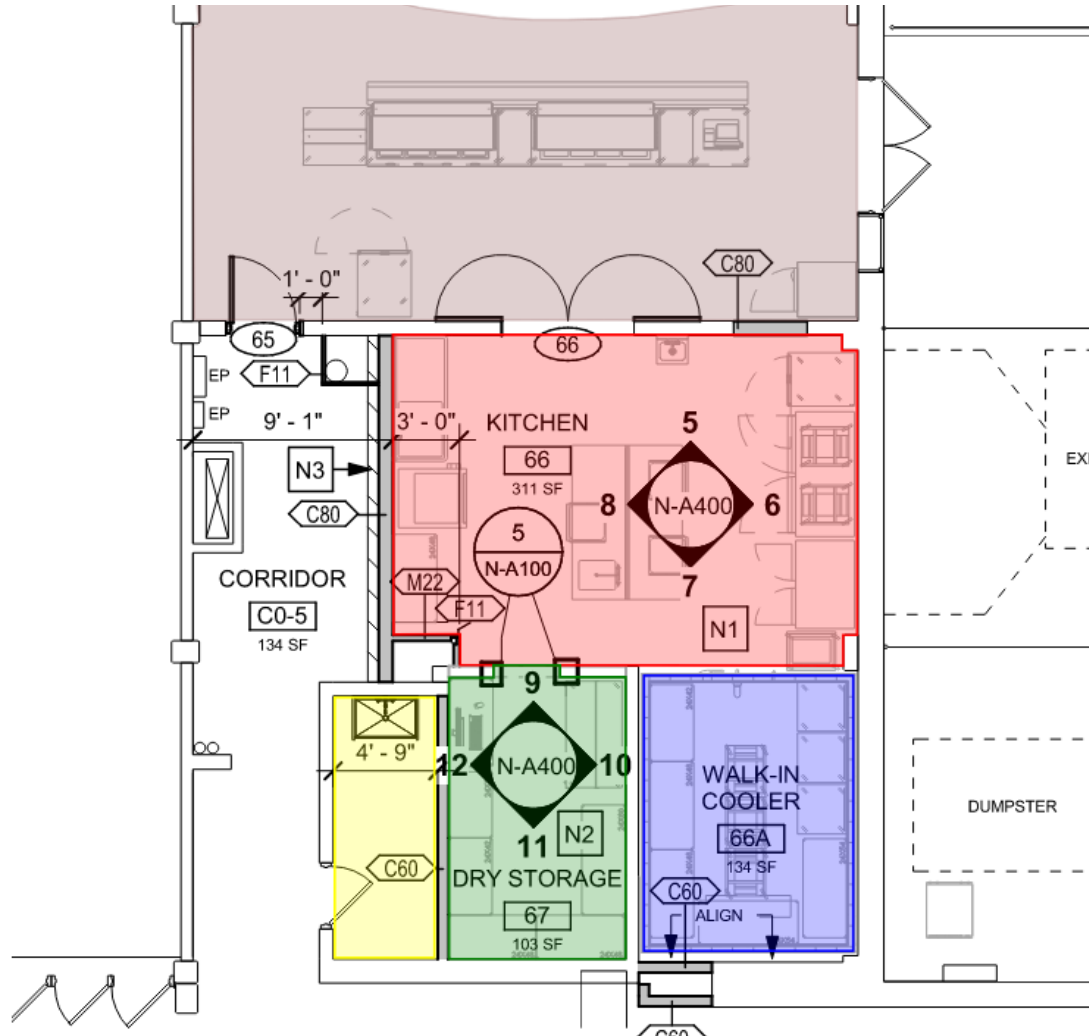
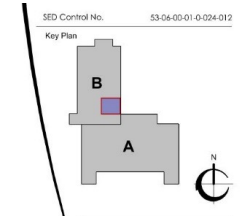


2 SECURE VESTIBULE - NEW WORK
1/4" = 1'-0"



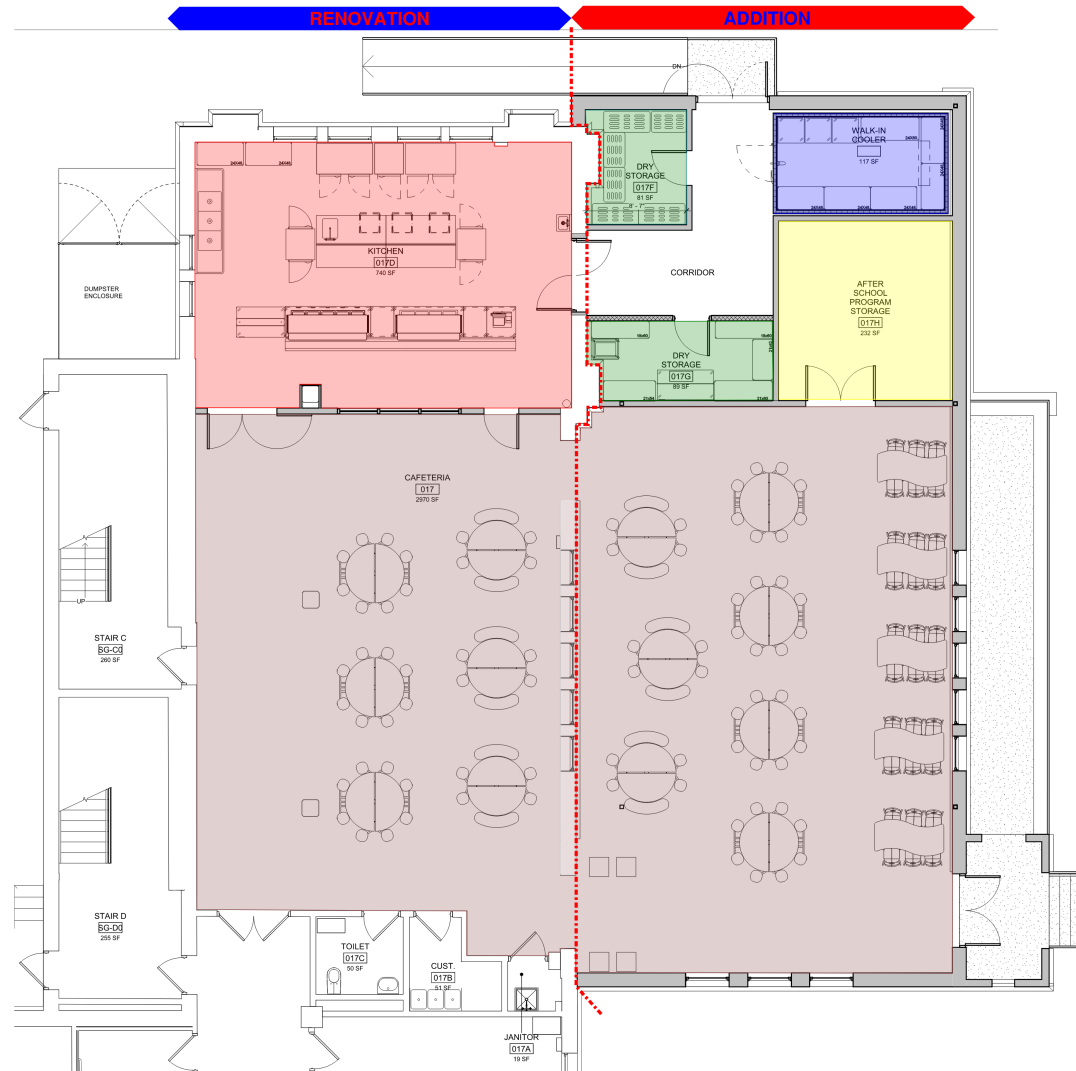
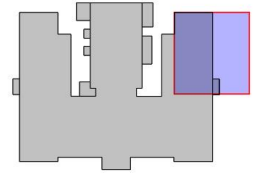
Ongoing Project Updates:

- Yates Elementary School
 - Kitchen Renovations



Ongoing Project Updates:

- Pleasant Valley Elementary School
 - Kitchen Reconstruction/Addition



Ongoing Project Updates:

Playgrounds

Hamilton A & B



MLK



Playgrounds

Woodlawn

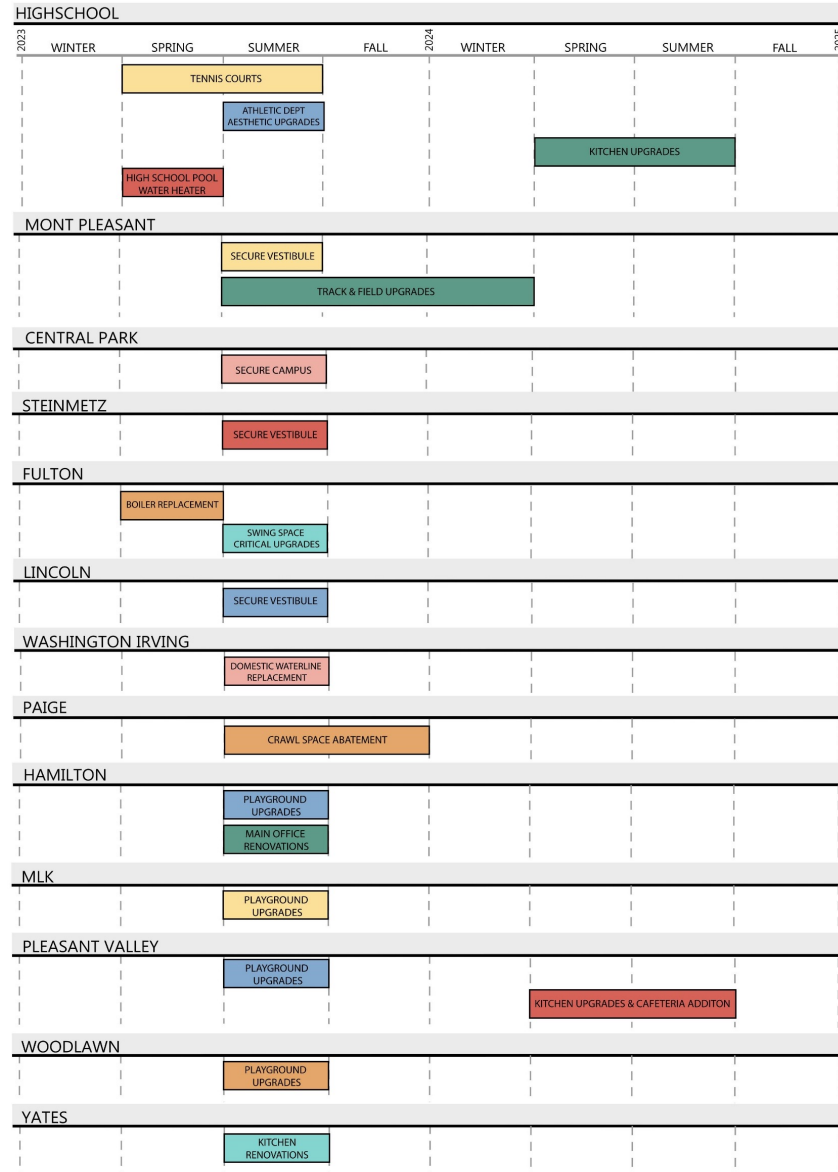


Pleasant Valley





Ongoing Project Updates:



Thank you!

Questions?

ENGAGE • IMAGINE • INSPIRE

