



Plevna K-12 School District Open Positions!

The District

Plevna Schools, located in the town of Plevna, Montana, operates as a K-12 district with three separate schools housed within one building. Current enrollment in Plevna School (K-6) is 54 students; Plevna Middle School (7-8) is 16 students; and Plevna High School (9-12) is 28 students. The district employs 18 certificated staff members, including an Administrative Assistant; nine classified employees; and one administrator. All three schools are fully accredited, have amazing technology available to students such as one-to-one Chromebook usage, and have a student-to-teacher ratio of 7:1.

[Plevna Schools Website](#)

[Plevna Schools Facebook Page](#)

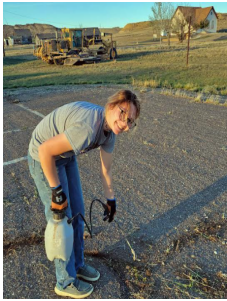
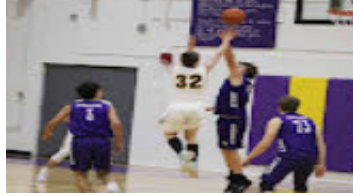


Open Positions!



The field of education has suffered some difficult times, and It is time to get involved! Our youth need mentors and teachers to guide them. Plevna Schools is searching for four dynamic individuals! We are in need of a 7-12 Science teacher, a K-12 Music Teacher, a K-12 PE teacher, and a Guidance Counselor. The district is searching for teachers with a track record of meeting the needs of students as well as experience with the integration of educational technologies, *but even if such an individual is in the process of obtaining any of these degrees, we would love to visit!* We may need to get creative to fill these positions, and we have been working with the Montana Office Of Public Instruction to resolve our dilemma. A school may apply for special circumstances to fill a position with an individual who may be eligible for *provisional licensure*. Provisional licensure is for individuals who are not yet licensed (or licensed, but don't have the appropriate endorsement) and working toward licensure through an educator preparation program. *So, if you are in the process of obtaining your degree for any of these positions, or are simply considering a career change, reach out and we'll explore the possibilities together!* The successful candidate(s) will have (or the ability to obtain) a state of Montana teaching license with the appropriate endorsement.

Plevna Schools | K-12



Academics:

Plevna School offers small classes that provide many opportunities for individualized academic achievement. We pride ourselves in the ability to provide our students with e-learning and college credit courses. Advanced and summer reading programs have been implemented to encourage and challenge the younger-aged students. Our students gain experience by attending Academic Olympics and a Math Meet.

Extracurricular:

Plevna School District, home of the Plevna Cougars, has a variety of extracurricular offerings to broaden student horizons. These activities include FFA, FCCLA, BPA, Student Council, Honor Society, and Pep Club.

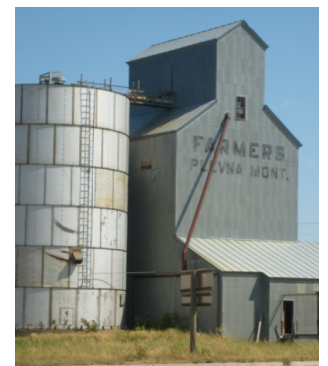
Athletics:

The athletics program includes Girls' Volleyball, Boys' and Girls' Track, and Boys' and Girls' Basketball. Plevna School co-ops with Baker School District for football. Some of these opportunities are offered to the Junior High as well as to the elementary grade levels!

The Community

Plevna, Fallon County, Montana is located 13 miles from Baker and 70 miles from Miles City, along Highway 12. Our small town of Plevna began in 1909, originally a railroad town along the Milwaukee Road, a transcontinental rail line, known as the Pacific Extension. Plevna, which loosely translates to "Town of Many Churches," is a rural community that provides a home to approximately 180 people. Railroad beginnings have given way to primarily an agricultural farming and ranching way of life for many residents. With the development of the Anticline in the Bakken Boom, the oil and gas industry is now a huge influx into life in Plevna. The Town of Plevna's cost of living average sits at 25.3% lower than that of the average in the United States.

[Fallon County Website](#)
[Town of Plevna Website](#)



Nearby Events and Activities

For the outdoor enthusiast

- Sandstone Recreation Area - a small relaxing lake just a few miles south of town offers fishing, camping, and no-wake boating.
- Baker Lake Recreational Complex - in Baker is also just 13 miles East of Plevna. There you can fish, jet ski, water ski or relax and enjoy the developed beaches while playing in the water.
- Makoshika State Park (Glendive) - former dinosaur habitat, many fossils remain, also fishing nearby.
- Strawberry Hills Recreation Area (Miles City)
- Medicine Rocks State Park (Ekalaka) - Fascinating sandstone rock formations, a spiritual place for the Plains Indians
- Theodore Roosevelt National Park (Medora, ND)
- Medora - Medora Musical, Amphitheater, Maah Daah Hey Trail, Chateau de Mores, Hiking Trails and so much more!

Museums

- O'Fallon Museum (Baker)
- Prairie Rose Classics (Baker)
- Range Riders Museum (Miles City)
- Dinosaur and Fossil Museum (Glendive)
- Dinosaur Museum (Ekalaka)
- Van Horns Auto Western Museum & Ice Cream shop (Marmarth, ND)
- North Dakota Cowboy Hall of Fame (Medora, ND)
- Carter County Museum (Ekalaka)
- Pioneer Trails Regional Museum (Bowman)
- Golden Valley County Museum (Beach, ND)
- Pierre Wibaux Museum (Wibaux)

Plevna and Baker Local Attractions

- Town parks
- Lakeview Country Club
- Fallon County Gun Range - Indoor / Outdoor Shooting
- Youth Center
- Baker Bowling Center
- Splash Park
- Iron Horse Skate Park
- Fairgrounds Arenas available for public use
- Roger Schmidt Amphitheater
- Small Airport
- Gyms
- Ball Fields - Softball, Baseball, Football, Basketball, and Tennis Courts
- Baker Recreation Center - Indoor Swimming Pool / Weight Center / Gym / Racquetball
- Concerts

Area Events of Interest

- Fallon County Fair - 3rd Week in August
- Baker PRCA Rodeo
- Bump and Run Racing
- Multiple Amateur Rodeos - Throughout the summer
- Home to MT HS Rodeo Finals - June
- World Famous Bucking Horse Sale - 2nd weekend in May in Miles City
- Demolition Derbys
- Concerts, Parades, Community Festivals and so much more!



We at Plevna Schools take pride in meeting the needs of the students of our school. Enrollment in Plevna Schools is increasing, and we are continually working to create new opportunities for our students and staff members. There are many coaching and extracurricular opportunities available in the district.

Plevna Schools has a 1:1 Chromebook program in grades K-12, and the district's robust network allows teachers and students access to many technology resources. We boast a small student-to-teacher ratio in all three of our schools. Small class sizes allow our faculty to better meet the needs of individual students. Plevna Schools is looking to fill these positions as soon as possible for a start date of August 22, 2022. Find details below about our district and these openings for Plevna School District #55 located in Plevna, MT:

:

7-12 Science Teacher, K-12 Music Teacher, K-12 PE Teacher, School Counselor

Job Details:

- Pay: \$32,800.00 - \$65,600.00 per year
- Job Type: Full-time
- Schedule: 8 hour shift
- Benefits:
 - *Full Family Medical Insurance and Health Savings Account of \$3,000 per annum
 - *Life Insurance, 401(k), Retirement Plan, Paid time off
 - *Relocation Assistance, Professional Development Assistance
 - *District Housing may be available. Rent is \$300/month and employees pay for water, sewer, garbage, and electricity.

Please refer contacts to our Business Manager, Jill Hildebrand (jhildebrand@plevna.k12.mt.us), or our Superintendent, Timberly Kelly (tkelly@plevna.k12.mt.us). We can also be reached via phone: 406-772-5666. If you are in need of a change and also *feel called* to make your mark on the future, Plevna Schools may be the place for you!

Plevna School District #55
327 North Main Street
PO Box 158
Plevna, MT 59344