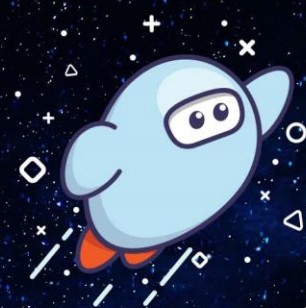


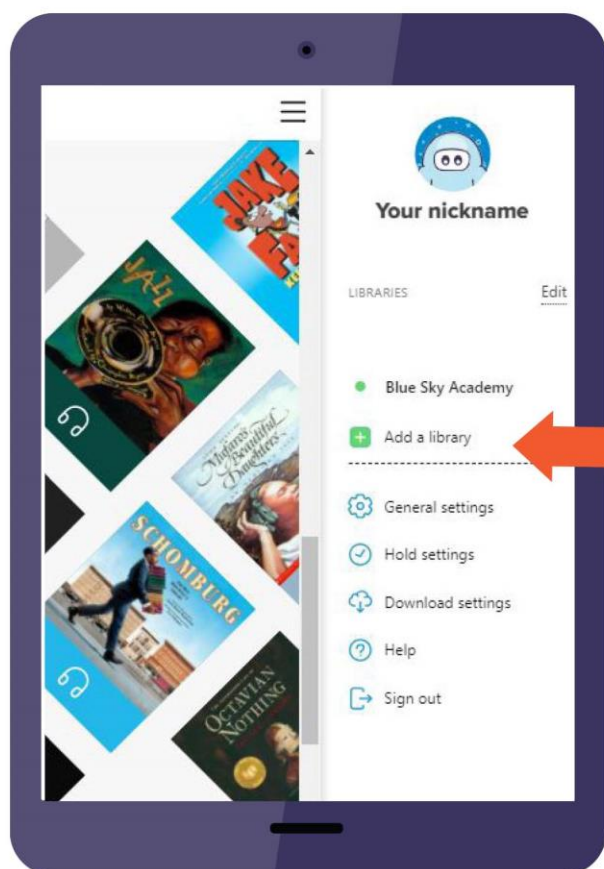
# Sora

The student reading app



Sora offers the ability for students to explore age-appropriate digital books from the Natchitoches Parish Library


**Here's how to access titles from the library through Sora:**



1. Request the app be added to your school's iPads.  
*Your Principal will need to put in the request to the NPSB.*

2. Once in Sora, choose "My school is Natchitoches Parish School District," then "Sign in using Natchitoches Parish School District."

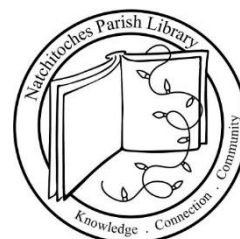
3. If prompted, enter the student's NPSB credentials (email and password).

4. Click or tap  in the top right corner .

- Select **ADD A LIBRARY**.
- Enter **71457** or **NATCHITOCHES**.
- Click on **GREEN GOLD CONSORTIUM**.

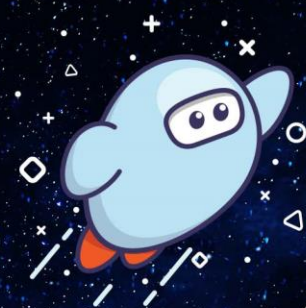
5. Click **Borrow** or **Place hold** on any title.

6. When prompted, sign into the library by choosing **NATCHITOCHES PARISH SCHOOL DISTRICT**.



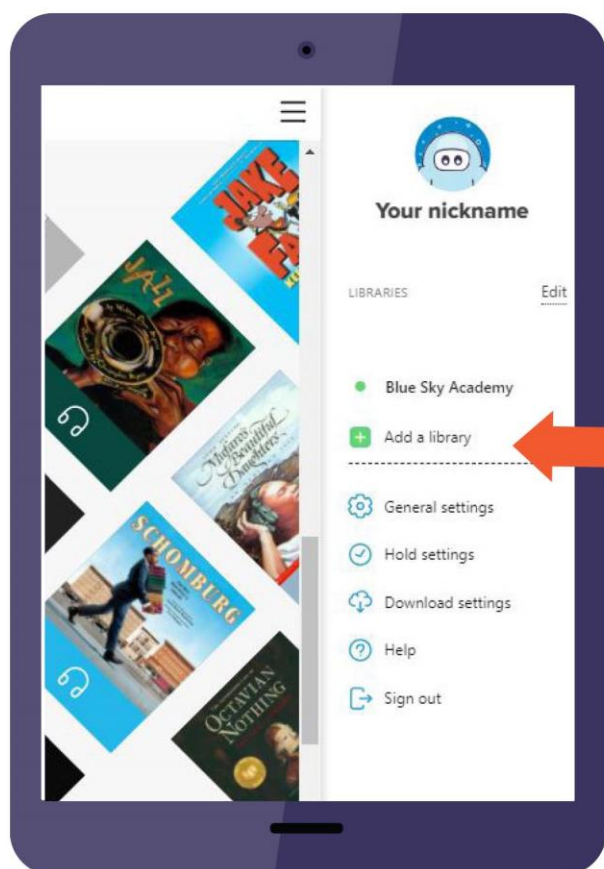
# Sora

The student reading app



Sora offers the ability for students to explore age-appropriate digital books from the Natchitoches Parish Library


**Here's how to access titles from the library through Sora:**



1. Request the app be added to your school's iPads.  
*Your Principal will need to put in the request to the NPSB.*

2. Once in Sora, choose "My school is Natchitoches Parish School District," then "Sign in using Natchitoches Parish School District."

3. If prompted, enter the student's NPSB credentials (email and password).

4. Click or tap  in the top right corner .

- Select **ADD A LIBRARY**.
- Enter **71457** or **NATCHITOCHES**.
- Click on **GREEN GOLD CONSORTIUM**.

5. Click **Borrow** or **Place hold** on any title.

6. When prompted, sign into the library by choosing **NATCHITOCHES PARISH SCHOOL DISTRICT**.

