



Administrative Offices 1420 S. Badour Road, Midland, MI 48640
(989) 631-9022
FAX (989) 698-3252
HaleS@bcreek.org
Shawn J Hale, Superintendent

Bullock Creek School District

**Paging and Bell System
Request for Proposal**

Bids due: 7/10/23

Return bids by email (preferred) or deliver to:

Jeramey Valley, Technology Director
ATTN: PA RFP
1420 S Badour
Midland, MI 48640

valleyj@bcreek.org

SUMMARY:

The "Request for Proposal" is for a Public Address System and scheduled bell system. This system will provide service to five physical buildings connected via a Wide Area Network (fiber). System will utilize existing analog speakers and cabling, repair/replace non-functional items and add new speakers/cabling/devices at each building as detailed per each individual building. Bullock Creek Schools reserves the right to increase or decrease the quantity of buildings and/or devices as proposed in this "Request for Proposal" after the winning bid has been awarded. The vendor's proposed pricing must be applicable for at least Ninety (90) days after bid due date.

IMPLEMENTATION:

Immediately upon bid approval and preferably during summer of 2023.

QUESTIONS:

Jeramey Valley
valleyj@bcreek.org (please email to set up building tour or phone call)

MINIMUM SPECIFICATIONS (must be clearly stated in submitted bid):

- Web Browser based controller equivalent or exceeding a Valcom IP6000 system.
- MUST be able to also function as a scheduled bell controller
- Bid must be itemized and include all products, labor, and cabling required to effectively install this system.
- Single point of administration, can be utilized to control all locations
- Tiered Administration/Access allowing each building to manage their "system".
- Desktop microphone in one location in each building
- 3.5 auxiliary input in each building
- 25/70 volt or IP based speakers
- Assume patch panels will need to be supplied
- Integration into existing SIP/VOIP phone system
- Must support multiple zones with full building and full campus paging capabilities
- Vendor to program all zones at time of installation for district
- Vendor to provide training for staff on programming of scheduled events
- Cabling/product shall be installed to common practice within a school environment
- All buildings will require moving/extending cabling from an existing head-end to an MDF or IDF elsewhere in the building

Alternate Item 1: Add digital signage with visual strobe and speakers at designated hallway locations. Reference Valcom model VL550F or equivalent.

High School

Current system

Bogen paging adaptor. Bogen amplifier, Viking Tone generator, speaker voltage - 25v

This school had been using a Bogen Multi-com 2000 that is no longer functional. The cabling has been bundled into a single zone and the site pages as a single zone.

ADD:

- Speakers in each hallway
- Speakers on exterior of facility
- Speakers in Main Gym
- Speakers in Auxiliary Gym
- Speakers in Auditorium
- Speakers in Administration Offices
- Speakers in Locker Rooms
- Speakers in multi-person bathrooms
- Speakers in Distance Learning Room

REPAIR/REPLACE:

Bogen Amp & Viking Bell Scheduler with new system.

Speakers in Industrial Arts rooms

Speakers in Food Service/Kitchen Area

Cabling from current amplifier in Office Conference Room to MDF and new system.

Paging Zones:

3 total zones:

- A. Hallways and Exterior
- B. Auditorium and Administration Offices
- C. All Other Areas including: All Classrooms, Gyms, Locker Rooms, Library & Cafeteria.

Alternate Item 1:

Add digital signage with visual strobe and speakers at 4 hallway locations.

Middle School

Current system

Network audio port. Bogen amplifier, speaker voltage - 25v

This school had originally been a Rauland system. The cabling has been bundled into a single zone and the site pages as a single zone.

ADD:

Speakers in east-west hallway

Speakers on exterior of facility

Speakers in Cafeteria & Overflow area

Speakers in Kitchen

Speakers in multi-person bathrooms

Cabling from current amplifier in Office to MDF and new system.

REPAIR/REPLACE:

Bogen Amp & SNOM with new system.

Speakers in Gym loft area

Paging Zones:

2 total zones:

A. Hallways and Exterior

B. All Other Areas including: All Classrooms, Gyms, Locker Rooms, Library & Cafeteria.

Alternate Item 1:

Add digital signage with visual strobe and speakers at 2 hallway locations.

Bullock Creek Elementary School

Current system

Network audio port. Bogen amplifier, speaker voltage - 25v

This school had originally been a Rauland system. The cabling has been bundled into a single zone and the site pages as a single zone.

ADD:

Speakers on exterior of facility

Speakers in former Computer Lab

Speakers in multi-person bathrooms

Cabling from current amplifier in Office WorkRoom to MDF and new system.

REPAIR/REPLACE:

Bogen Amp & SNOM with new system.

Speakers in Music Classroom

Paging Zones:

2 total zones:

A. Hallways and Exterior

B. All Other Areas including: All Classrooms, Gyms, Locker Rooms, Library & Cafeteria.

Alternate Item 1:

Add digital signage with visual strobe and speakers at 3 hallway locations.

Floyd Elementary School

Current system

Network audio port. Bogen amplifier, speaker voltage - 25v

This school had originally been a Rauland system. The cabling has been bundled into a single zone and the site pages as a single zone.

ADD:

Speakers on exterior of facility

Speakers in Hallways

Speakers in multi-person bathrooms

REPAIR/REPLACE:

Bogen Amp & SNOM with new system.

Speakers in Modular (separate) Classroom

Cabling from current amplifier in RTC Classroom to MDF and new system.

Paging Zones:

2 total zones:

A. Hallways and Exterior

B. All Other Areas including: All Classrooms, Gyms, Locker Rooms, Library & Cafeteria.

Alternate Item 1:

Add digital signage with visual strobe and speakers at 4 hallway locations.

Pine River Elementary School

Current system

Bogen PCM200, TPU100 Amp, speaker voltage - 25v

This school had originally been a Rauland system. The cabling has been bundled into a single zone and the site pages as a single zone.

ADD:

Speakers on exterior of facility

Speakers in multi-person bathrooms

REPAIR/REPLACE:

Bogen Amp & Related with new system.

Cabling from current amplifier in RTC Classroom to MDF and new system.

Paging Zones:

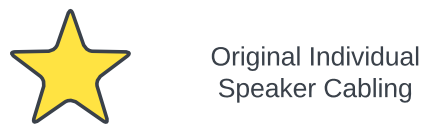
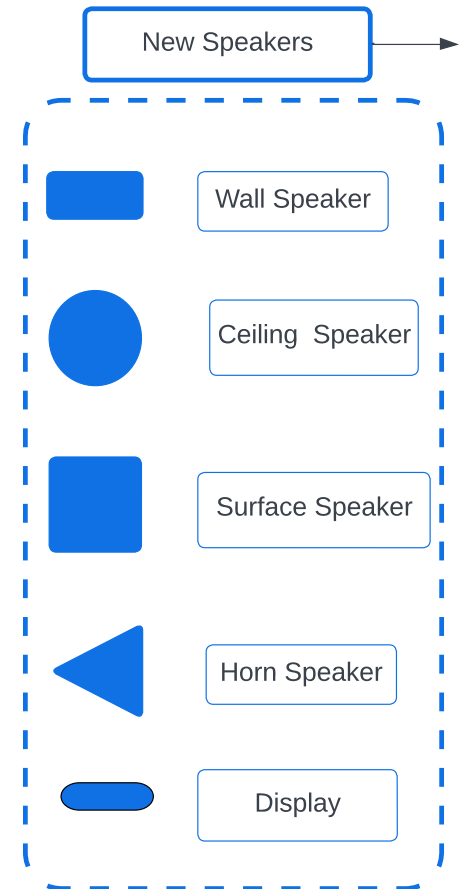
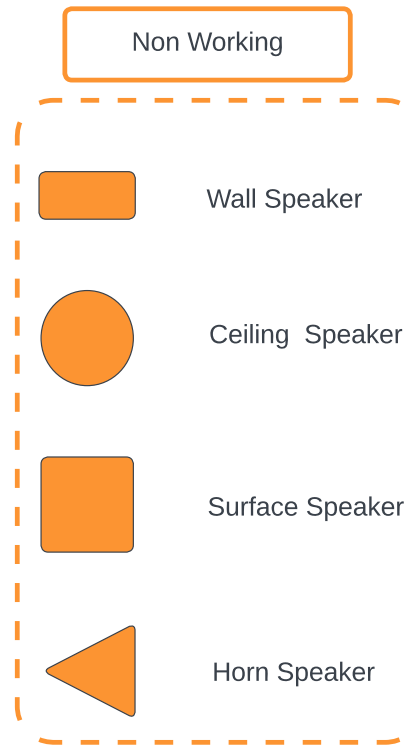
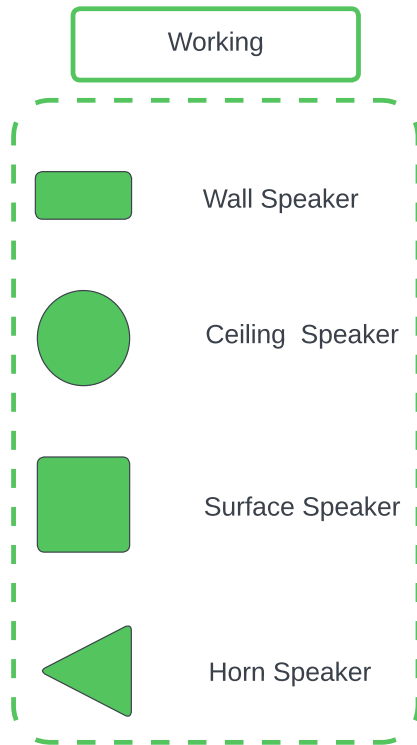
2 total zones:

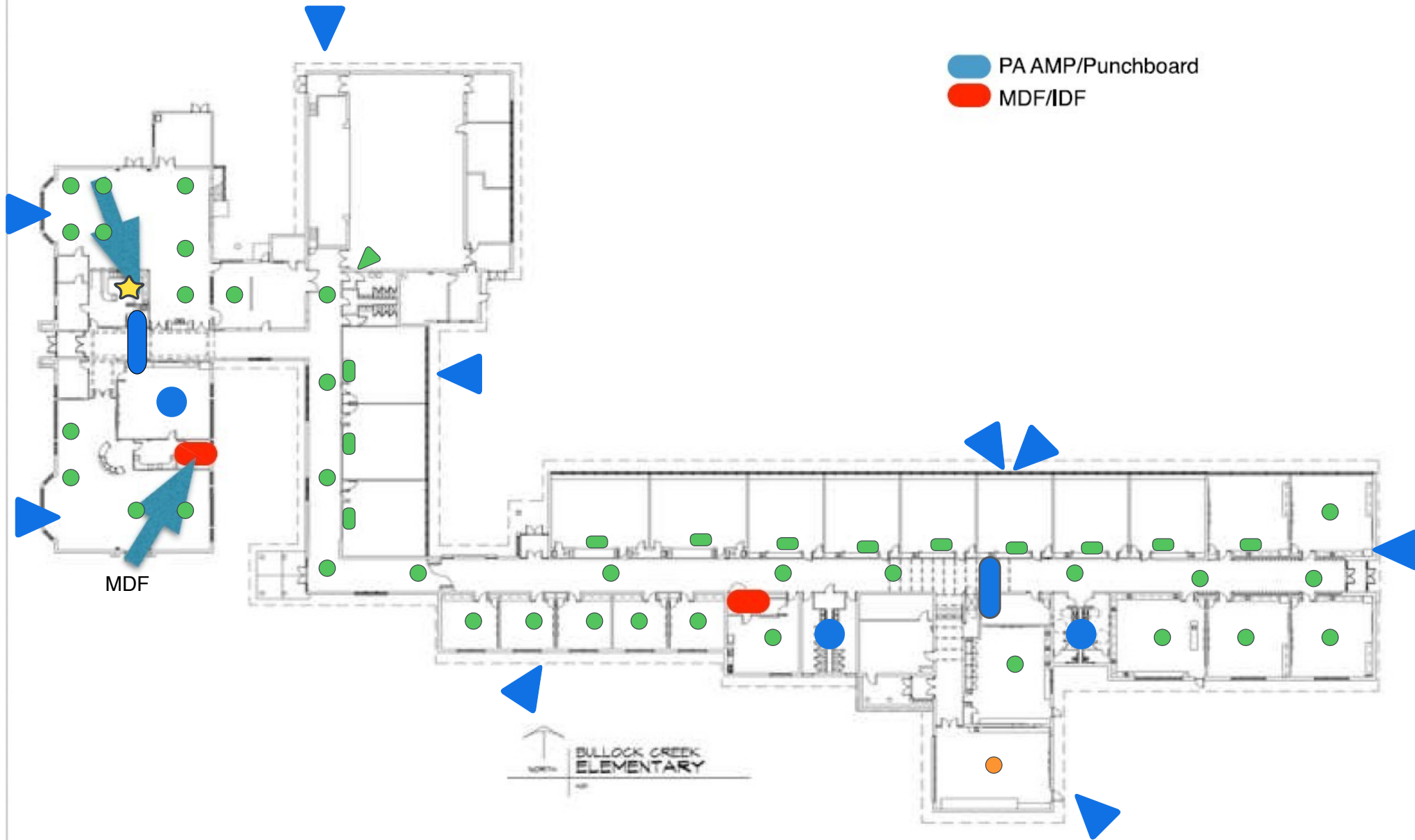
A. Hallways and Exterior

B. All Other Areas including: Classrooms, Gyms, Locker Rooms, Library & Cafeteria.

Alternate Item 1:

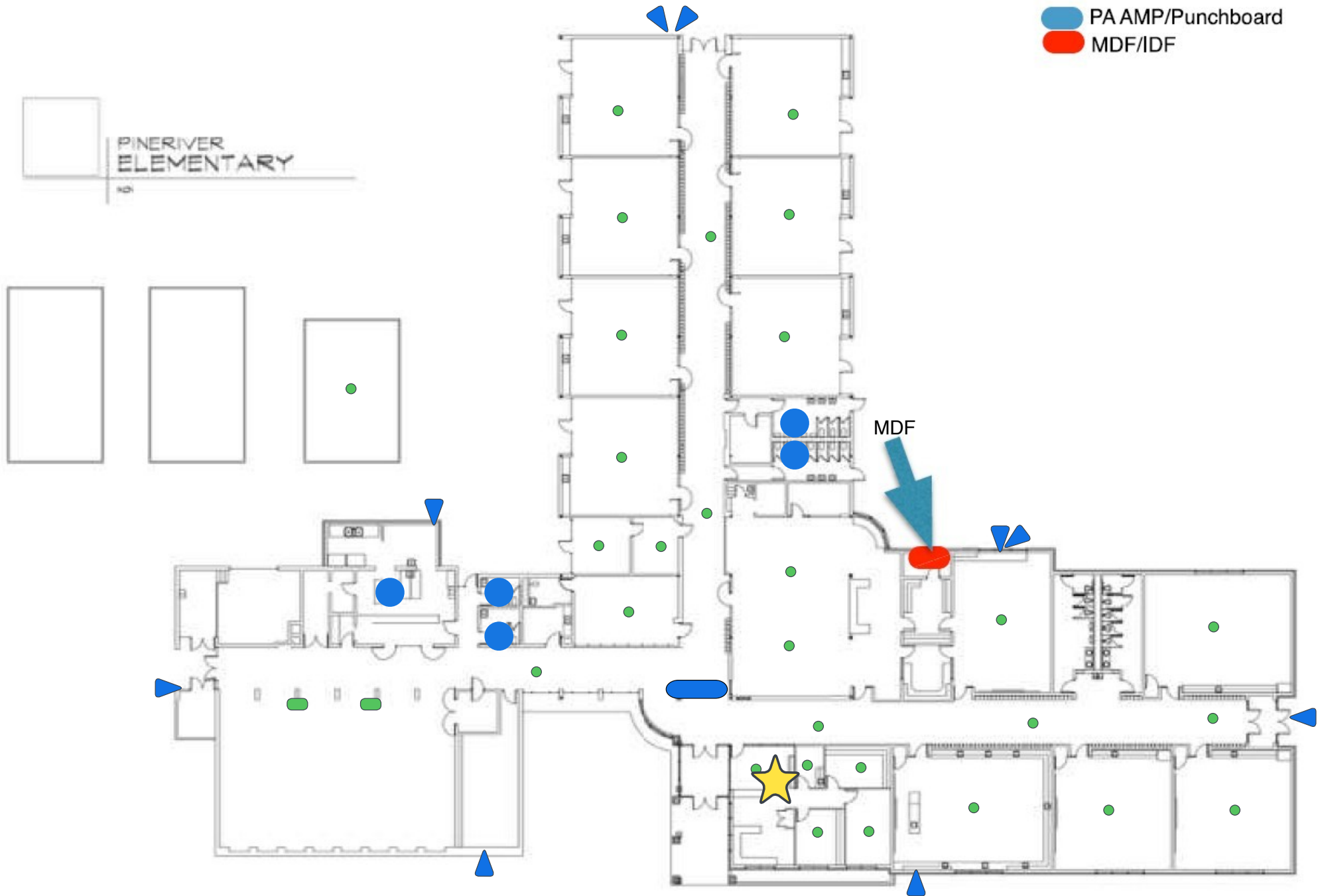
Add digital signage with visual strobe and speakers at 1 hallway location.



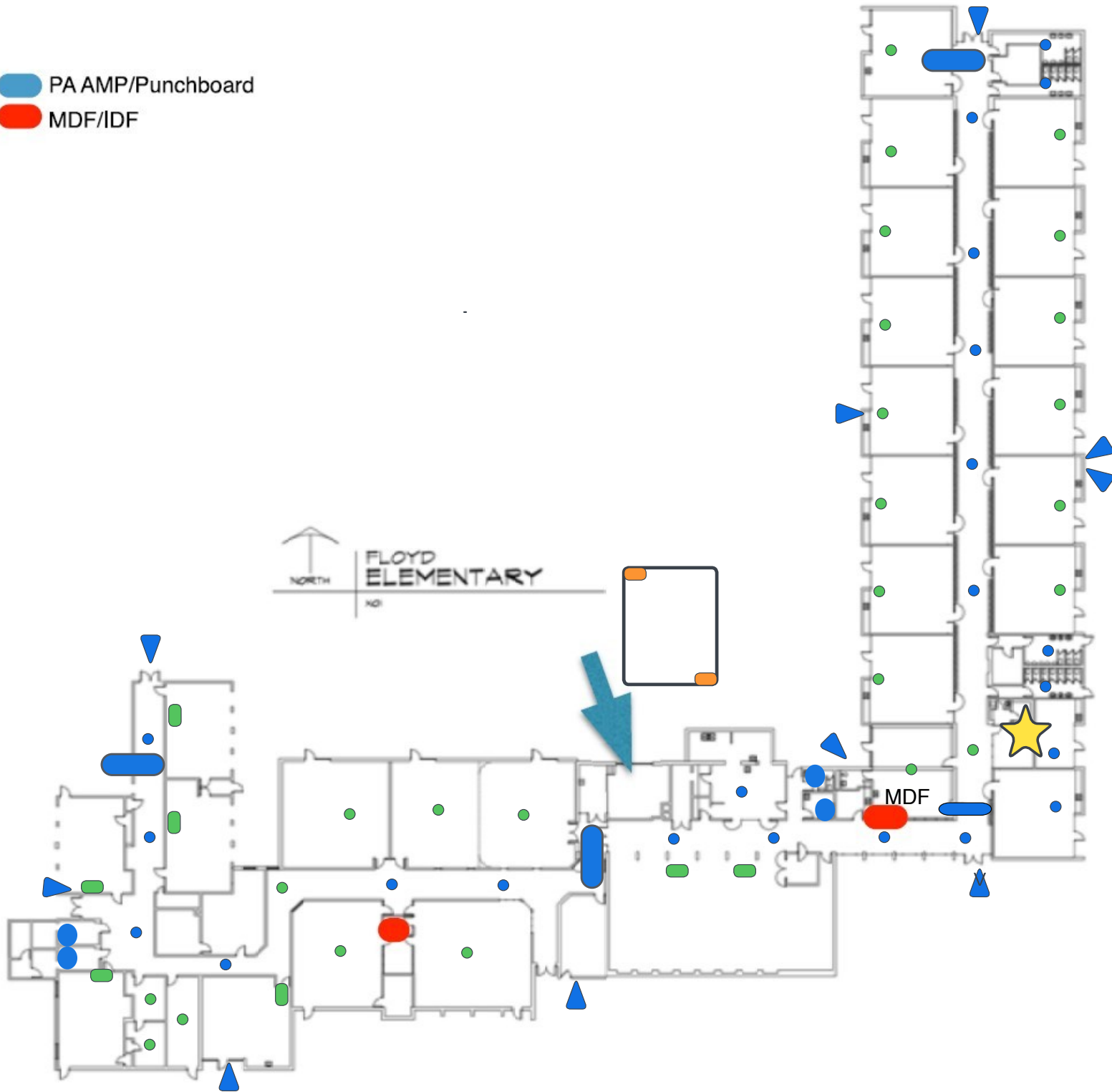


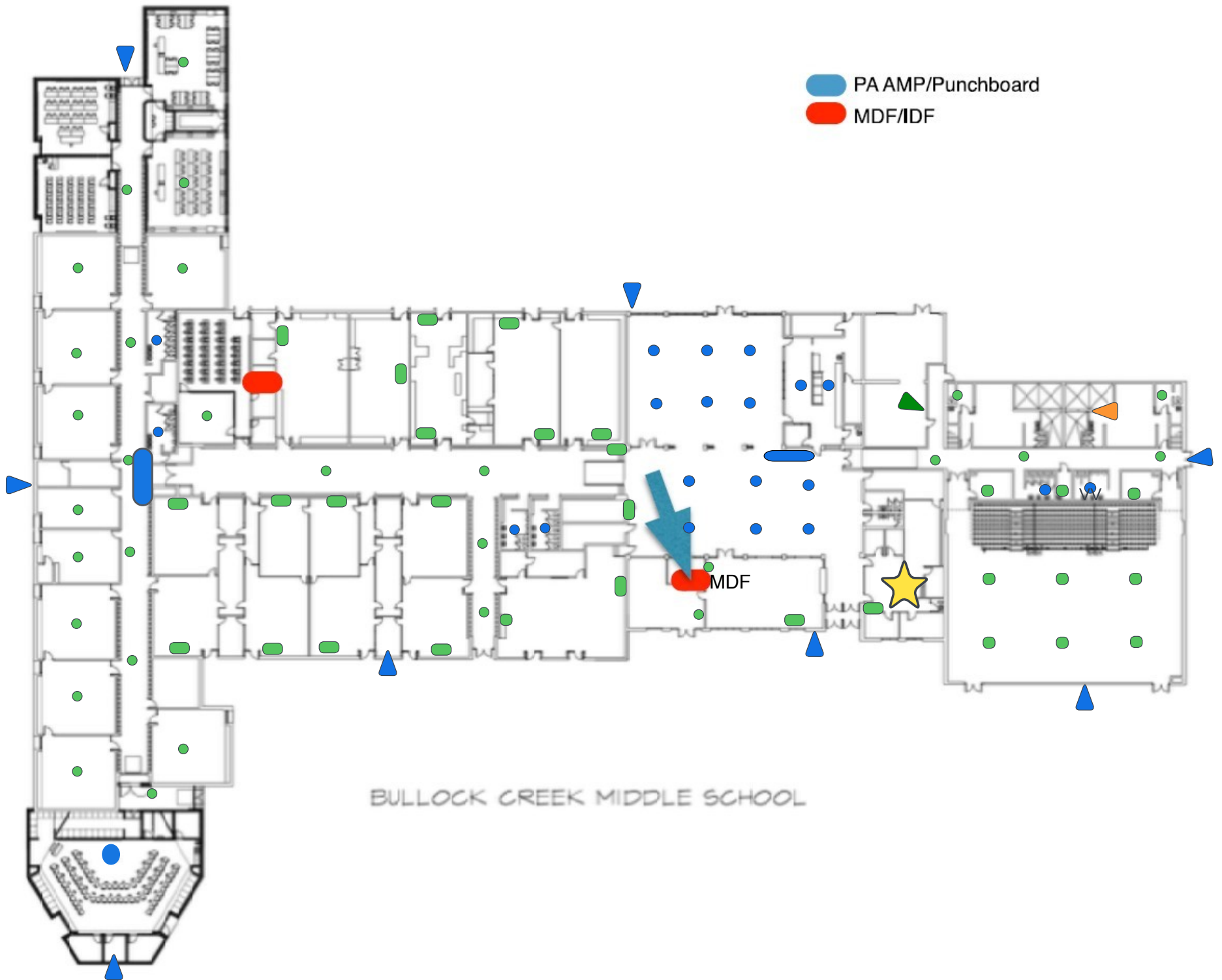
PINERIVER
ELEMENTARY

PA AMP/Punchboard
MDF/IDF

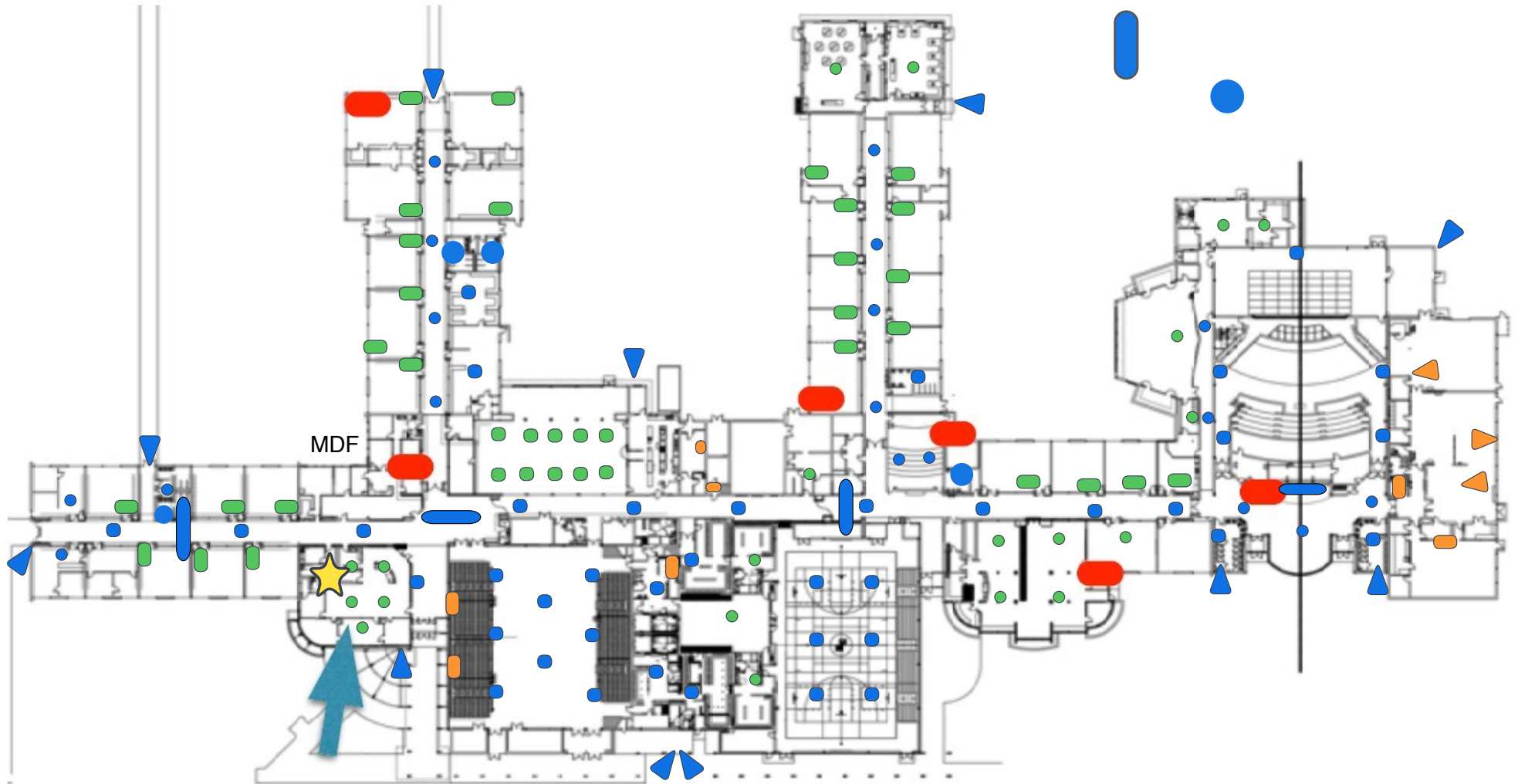


- PA AMP/Punchboard
- MDF/IDF





MDF/IDF
PA AMP/Punchboard



BULLOCK CREEK HIGH SCHOOL