

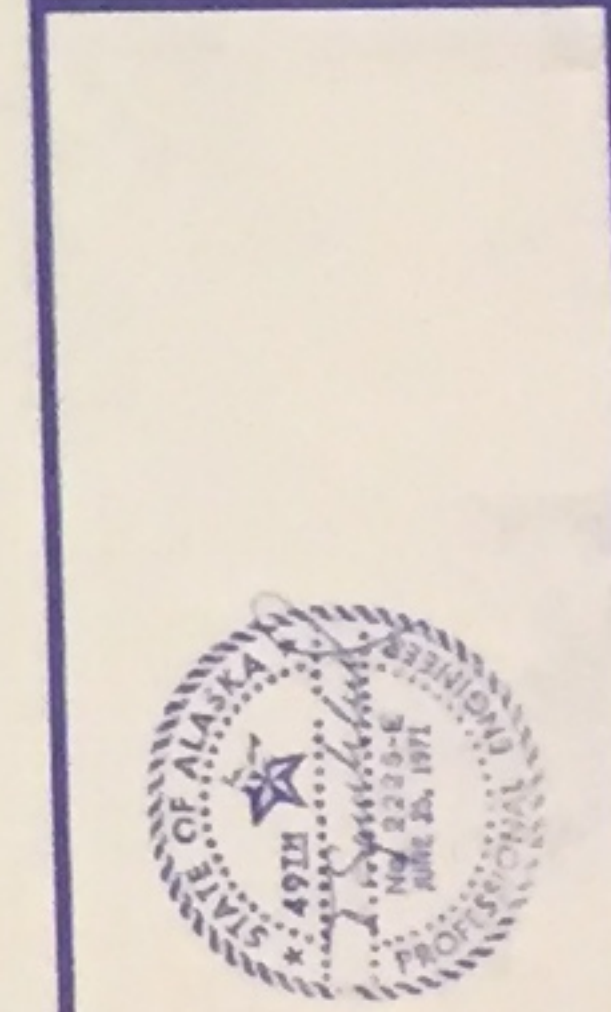
LEGEND

	EXISTING STRUCTURES TO BE REMOVED
	EXISTING BUILDINGS TO REMAIN
	NEW GRAVEL ROAD, FOOTPATH, AND PARKING BASE #10
	NEW GRAVEL PATH ADDALT #2
	EXISTING GRAVEL ROAD
	EXISTING VEGETATION
	EXISTING UTILITY
	EXISTING FENCE
	EXISTING SANITARY MANHOLE
	EXISTING FIREHYDRANT
	EXISTING UTILITY POLE

- NOTES:**
- SEE SHEET A21 & A22 FOR CONSTRUCTION PHASING AND ADDITIVE ALTERNATES.
 - SEE SHEET A31 & A32 FOR FINAL GRADES AROUND BUILDING PERIMETER
 - DELETE THIS PATH IF ADD. ALT. #2 IS AWARDED

IDITAROD AREA SCHOOL DISTRICT
 HOLY CROSS SCHOOL ADDITION
 SITE PLAN
 SCALE: 1" = 30'
 SHEET 1 OF 1

TOBBERN SPURKLAND PE
 203 W. 15TH AVENUE
 ANCHORAGE, ALASKA
 (907) 279-3916
 JULY 1986



drawn T⁹
 checked T⁹
 date 7-25-86
 revisions
 OK
 FHM
 11/6/86
 [Signature]

HOLY CROSS SCHOOL
 HOLY CROSS, ALASKA
 IDITAROD AREA SCHOOL DISTRICT
 P.O. BOX 105 McGRATH, ALASKA 99627
 job no. 8438
 dwg title
SITE PLAN
 sheet no.
C-1



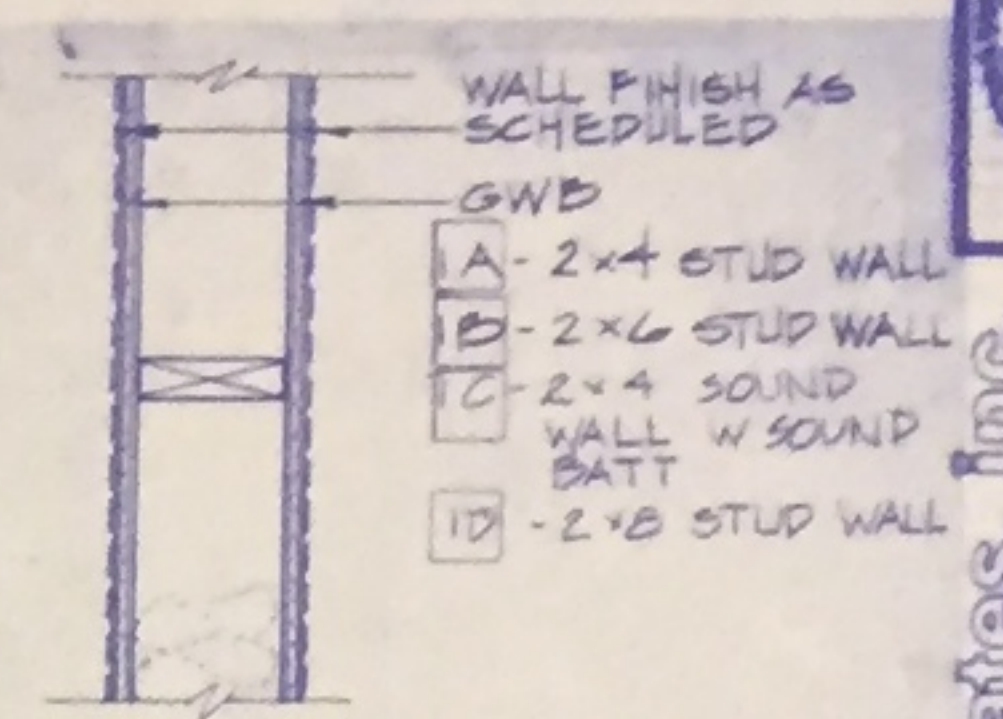
kumin associates, inc.
 architects & planners
 1000 W. 11th Ave., Anchorage, Alaska 99501 • 907-562-8377

HOLY CROSS SCHOOL
 HOLY CROSS, ALASKA
 IOTARD AREA SCHOOL DISTRICT
 P.O. BOX 105, McGRATH, ALASKA 99627

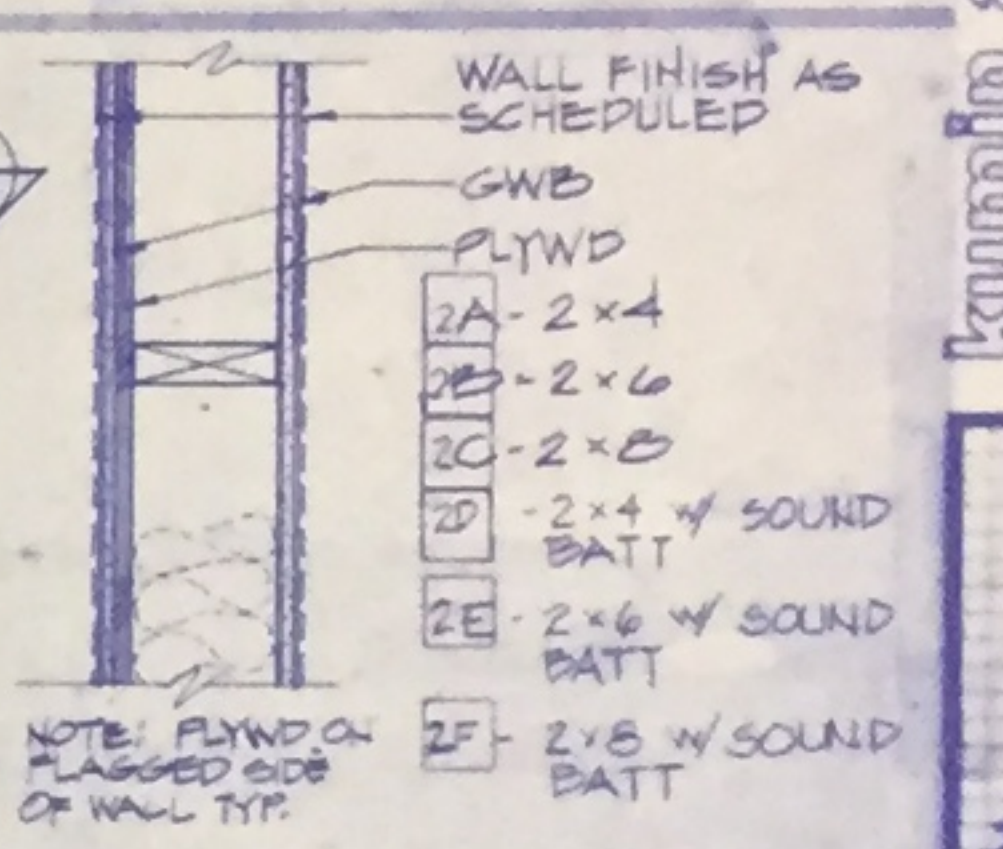
draw: JED
 checked:
 date: 7-25-86
 revisions:

job no. 4436
 desig. title
MAIN LEVEL FLOOR PLAN
 MASTER PLAN
 sheet no.
A 2.1

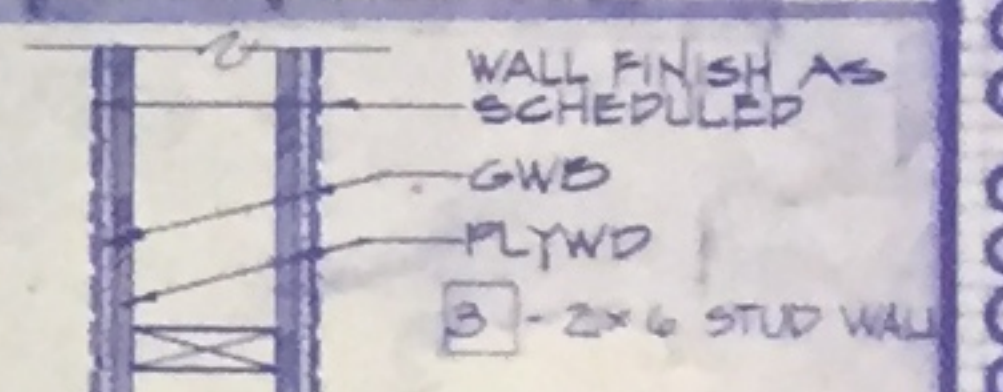
PARTITION TYPES



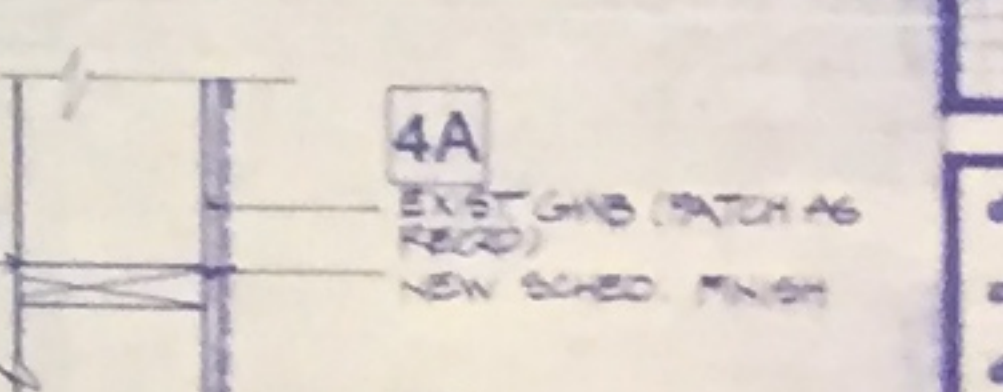
1 INTERIOR WALL
 1 1/2" - 1" 0"



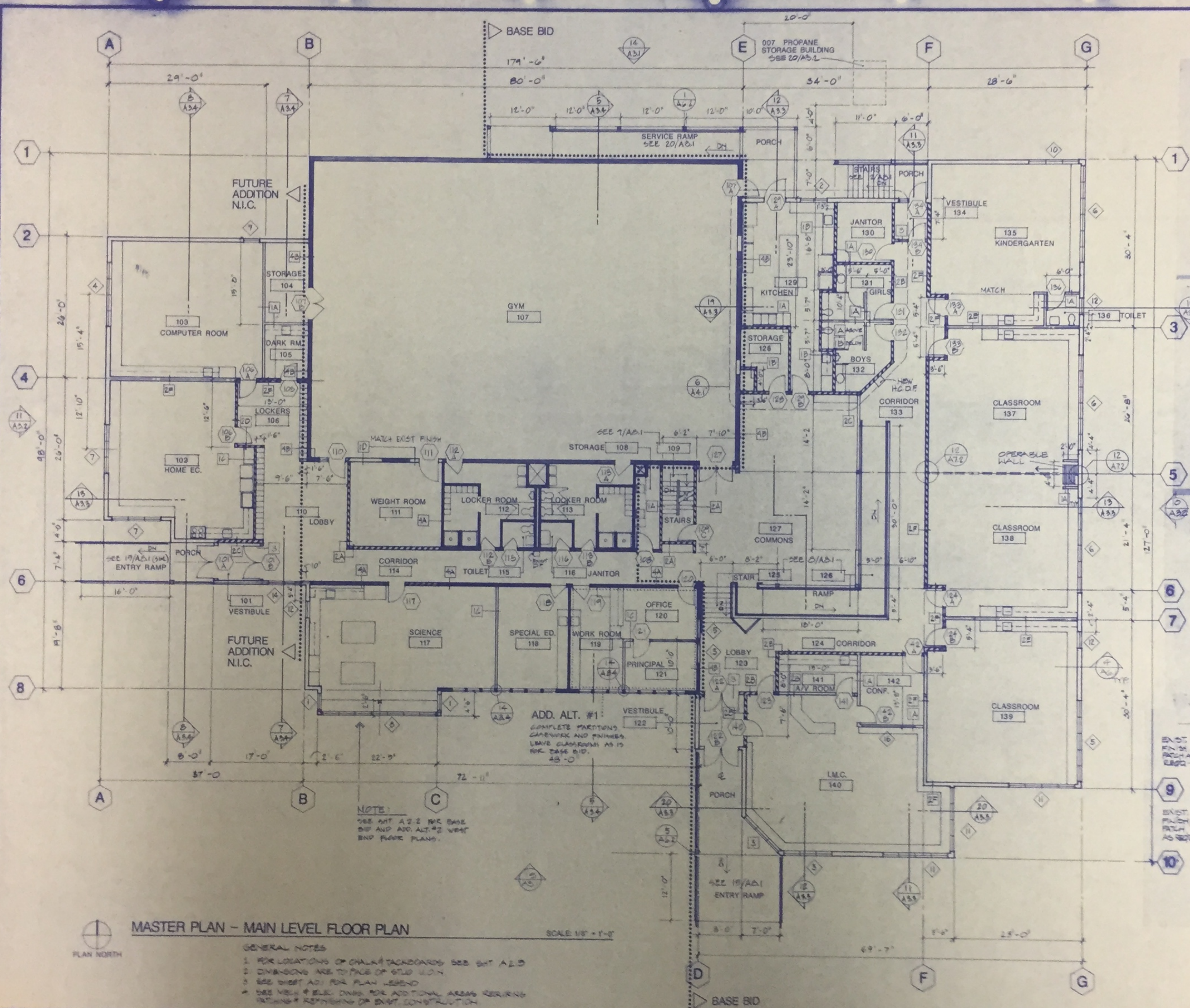
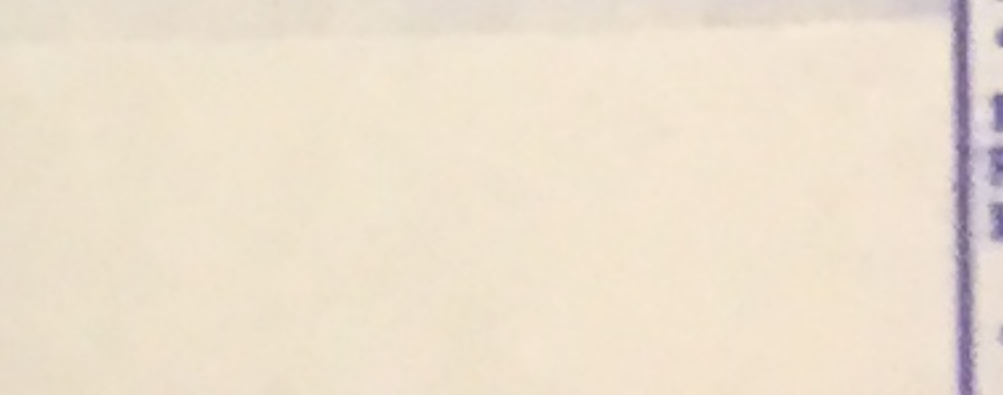
2 INTERIOR WALL
 1 1/2" - 1" 0"



3 INTERIOR WALL
 1 1/2" - 1" 0"



4 EXIST. INTERIOR WALL
 1 1/2" - 1" 0"



MASTER PLAN - MAIN LEVEL FLOOR PLAN



- SCALE 1/8" = 1'-0"
- GENERAL NOTES
1. FOR LOCATIONS OF CHALK/TACKBOARDS SEE SHET A.2.3
 2. DIMENSIONS ARE TO FACE OF STUD WALL
 3. SEE SHEET A.2.1 FOR PLAN LEGEND
 4. SEE VIEW & ELEV. DWGS. FOR ADDITIONAL AREAS REQUIRING PARTITION REFINISHING OR EXIST. CONSTRUCTION

NOTE:
 SEE INT. A.2.2 FOR BASE BID AND ADD. ALT. #2 WEST END FLOOR PLAN.

ADD. ALT. #1:
 COMPLETE PARTITION CARPETING AND FINISHES LEAVE CLASSROOMS AS IS FOR BASE BID.



kumin associates, inc.
 architects & planners
 3000 A STREET SUITE 202 • ANCHORAGE, ALASKA 99503 • (907) 565-8877

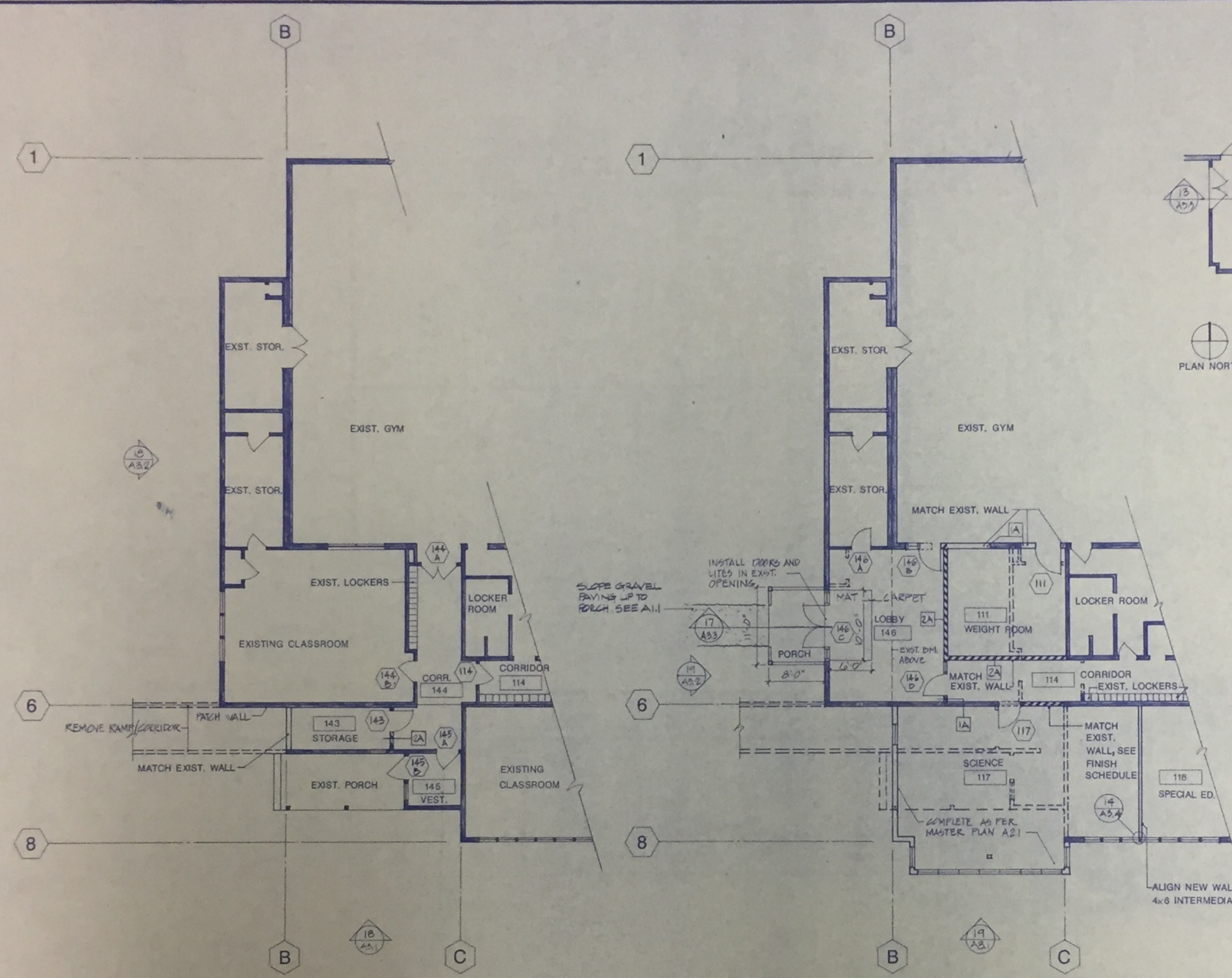
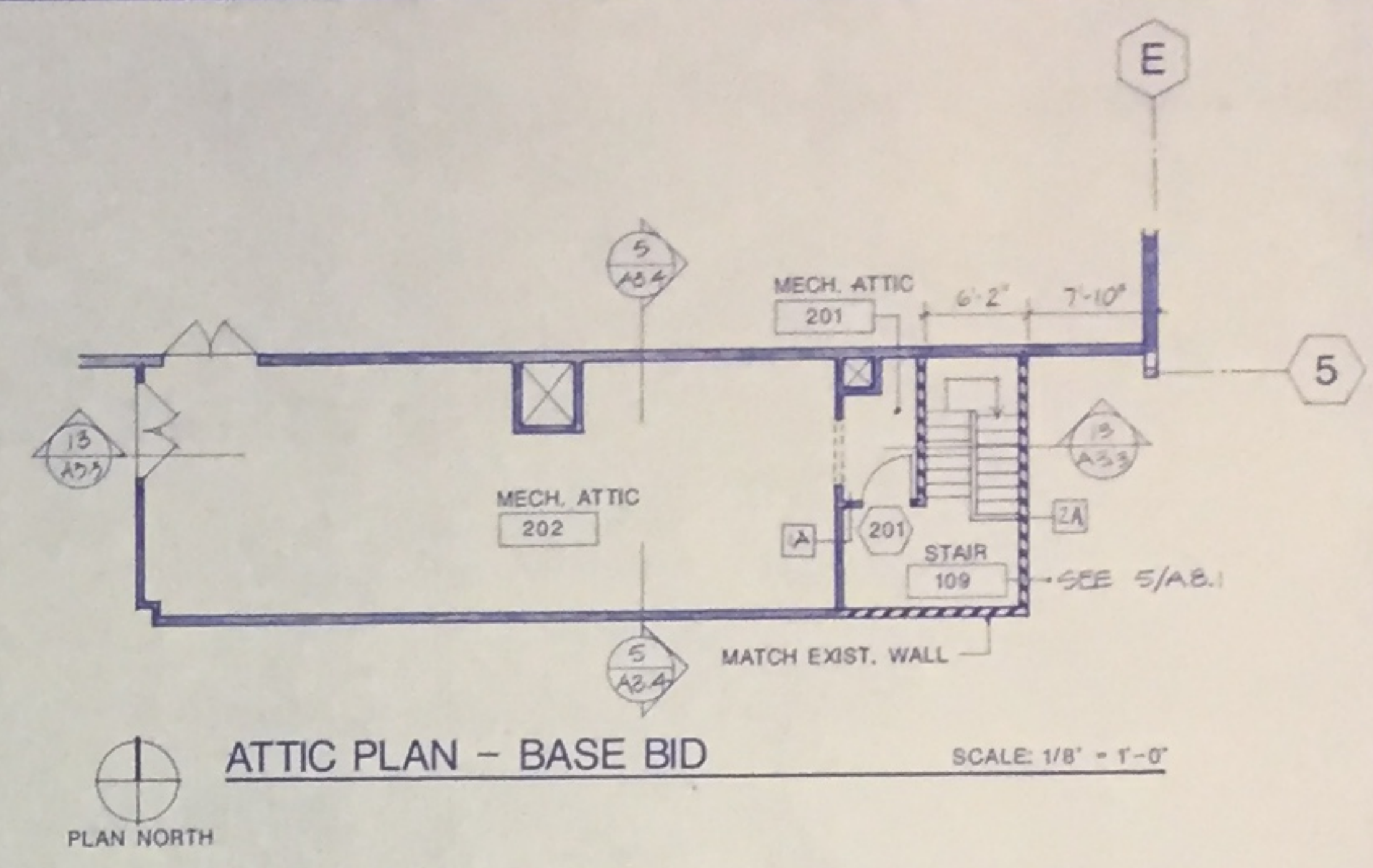
HOLY CROSS SCHOOL
 HOLY CROSS, ALASKA

IDITAROD AREA SCHOOL DISTRICT
 P.O. BOX 105 McGRATH, ALASKA 99627

drawn JD
 checked
 date 7-25-86
 revisions

job no. 8436
 dwg. title
 WEST END
 FLOOR PLANS
 BASE BID &
 ADD. ALT. #2
 sheet no.

A 2.2



BASE BID - WEST END FLOOR PLAN
 SCALE: 1/8" = 1'-0"
 PLAN NORTH

ADD. ALT. #2 - WEST END FLOOR PLAN
 SCALE: 1/8" = 1'-0"
 PLAN NORTH
 NOTE: 1. SEE SHT. A2.4 FOR REFLECTED CEILINGS OF ROOMS 111, 114 & 117.
 2. SEE SHT. A2.1 FOR PLAN LEGEND



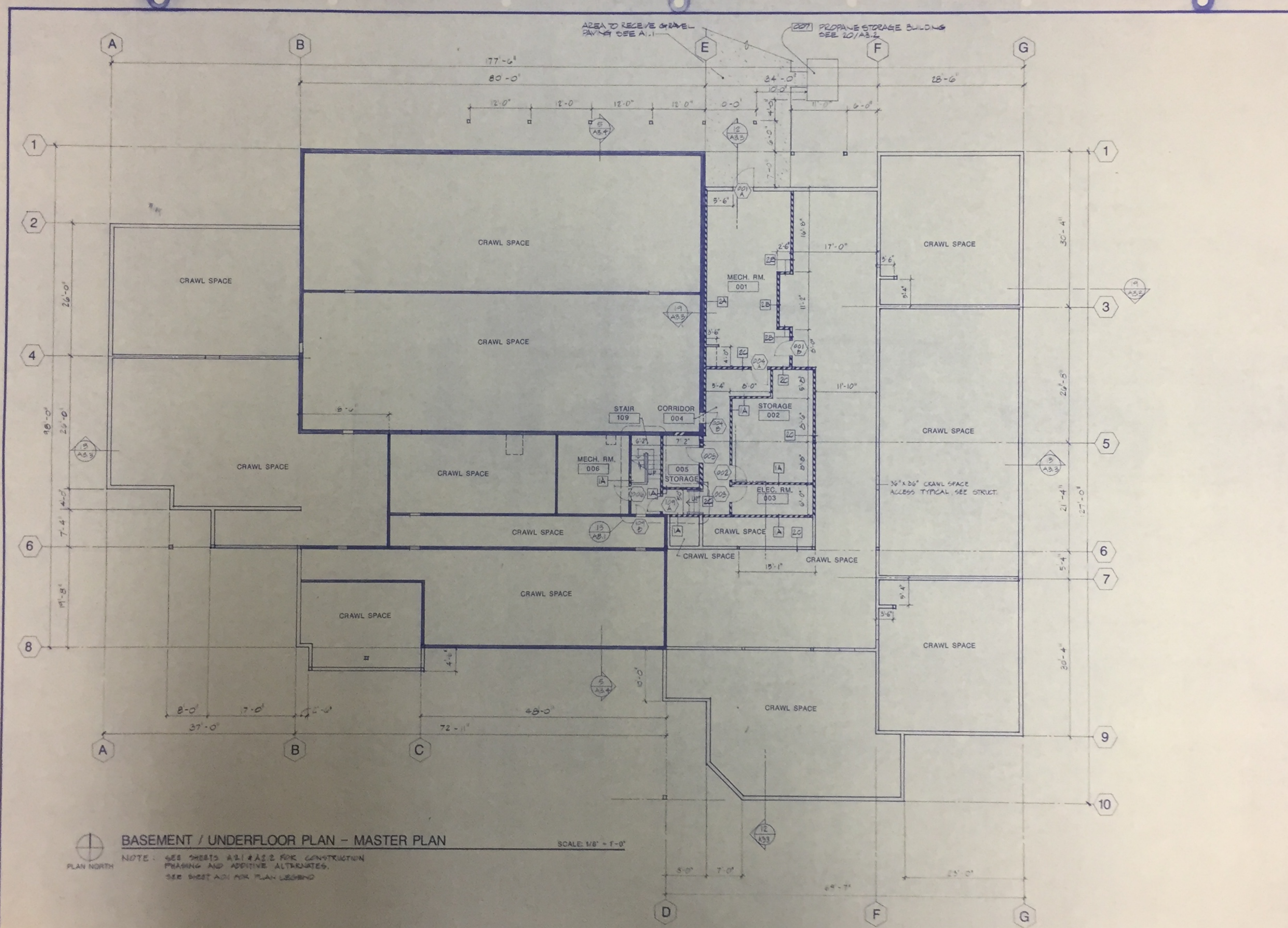
kumin associates, inc.
architects & planners
3006 & Street Suite 200 Anchorage Alaska 99503 • 1907140-8517

HOLY CROSS SCHOOL
HOLY CROSS, ALASKA
IDITAROD AREA SCHOOL DISTRICT
P.O. BOX 105 McGRATH, ALASKA 99627

drawn JD
checked
date 7-25-85
revisions

job no. 05430
dwg. title
BASEMENT FLOOR PLAN

sheet no.
A 2.3

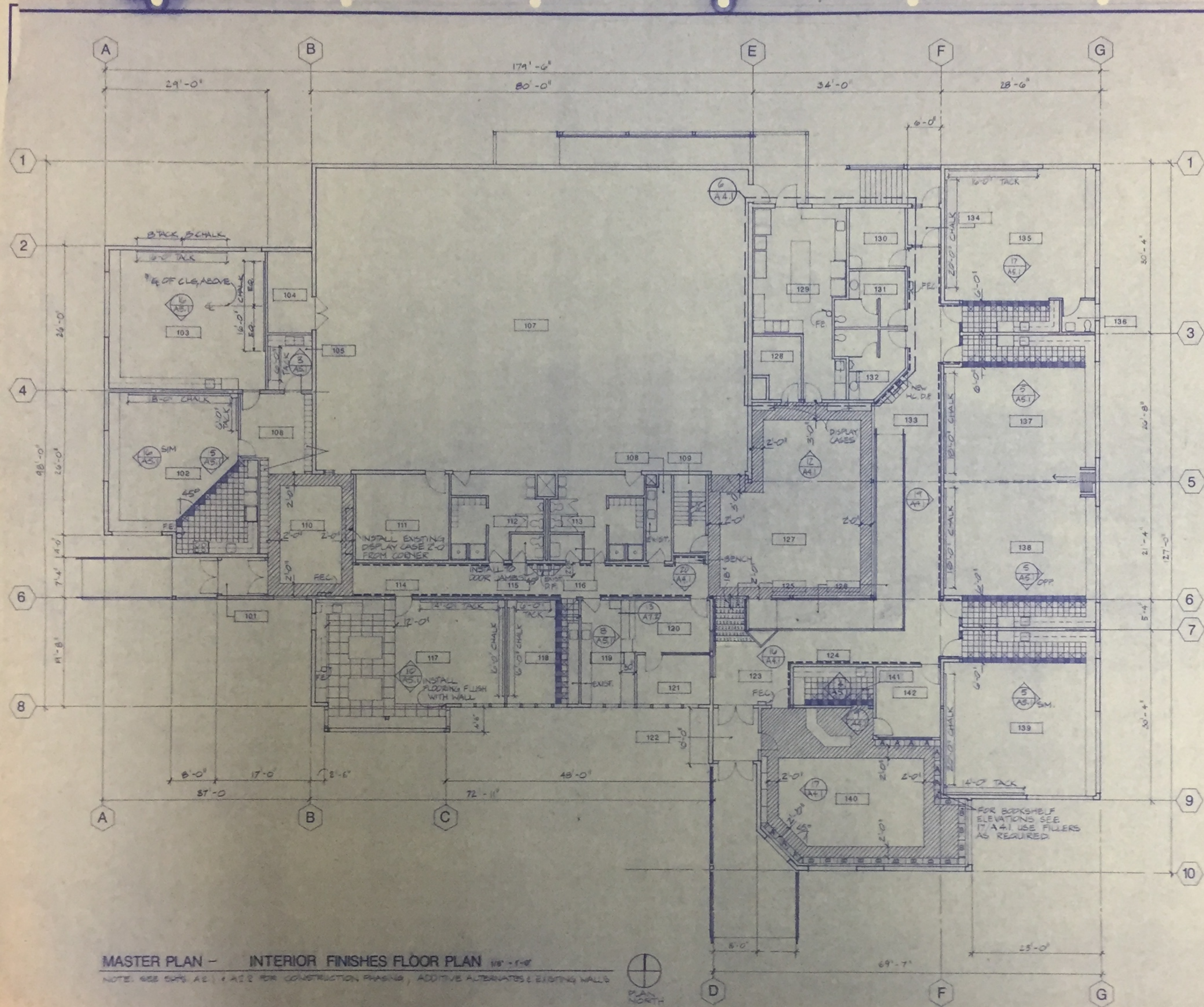


BASEMENT / UNDERFLOOR PLAN - MASTER PLAN

SCALE: 1/8" = 1'-0"



NOTE: SEE SHEETS A3.1 & A3.2 FOR CONSTRUCTION
FRAMING AND ADDITIVE ALTERNATES.
SEE SHEET A3.1 FOR PLAN LEGEND



LEGEND

[Symbol]	VINYL TILE COLOR 'A'
[Symbol]	VINYL TILE COLOR 'B'
[Symbol]	VINYL TILE COLOR 'C'
[Symbol]	SHEET VINYL
[Symbol]	RUBBER TILES/STAIR TREAD
[Symbol]	CARPET 'B'
[Symbol]	WANSKOT/TACK STRIP

- NOTES**
- FOR SURFACES NOT ILLUSTRATED ON FINISH PLAN, SEE FINISH SCHEDULE SHEET A 2.0
 - PAINT CORRIDOR WALLS WHICH DO NOT RECEIVE WANSKOT SAME PAINT COLOR AS ABOVE WANSKOT U.O.N.
 - CENTER CHALKBOARDS & TACK-BOARDS BETWEEN WALLS OR BETWEEN WALL & WINDOW OR DOOR SPOUN.
 - FOR TYPICAL MOUNTING HEIGHT, SEE DTL. 3, 4, & 5/A4.1
 - SEE DTL. 17/A1.2 FOR CASEWORK AT EXTERIOR WALL TYR
 - MASTER PLAN FINISHED FOR CORRIDOR #14 WILL NOT BE COMPLETE UNTIL FUTURE ADDITION CARPET AND PAINT WILL BE APPLIED DURING PHASE B1 OR ADD. AL.#2.
 - SEE MECHANICAL & ELECTRICAL DRAWINGS FOR AREAS REQUIRING PATCHING & REFINISHING OF EXIST. CONST.
 - SEE SHEET A 2.1 FOR EXISTING CONSTRUCTION AND PROJECT PHASING

MASTER PLAN - INTERIOR FINISHES FLOOR PLAN 1/8" = 1'-0"
 NOTE: SEE SHEET A 2.1 & A 2.2 FOR CONSTRUCTION PHASING, ADDITIVE ALTERNATES & EXISTING WALLS



kumin associates, inc.
 architects & planners
 2000 & 2100 1st Ave. Ste. 202 • Anchorage, Alaska 99501 • (907) 563-8477

HOLY CROSS SCHOOL
 HOLY CROSS, ALASKA
 IDITAROD AREA SCHOOL DISTRICT
 P.O. BOX 105 McGRATH, ALASKA 99627

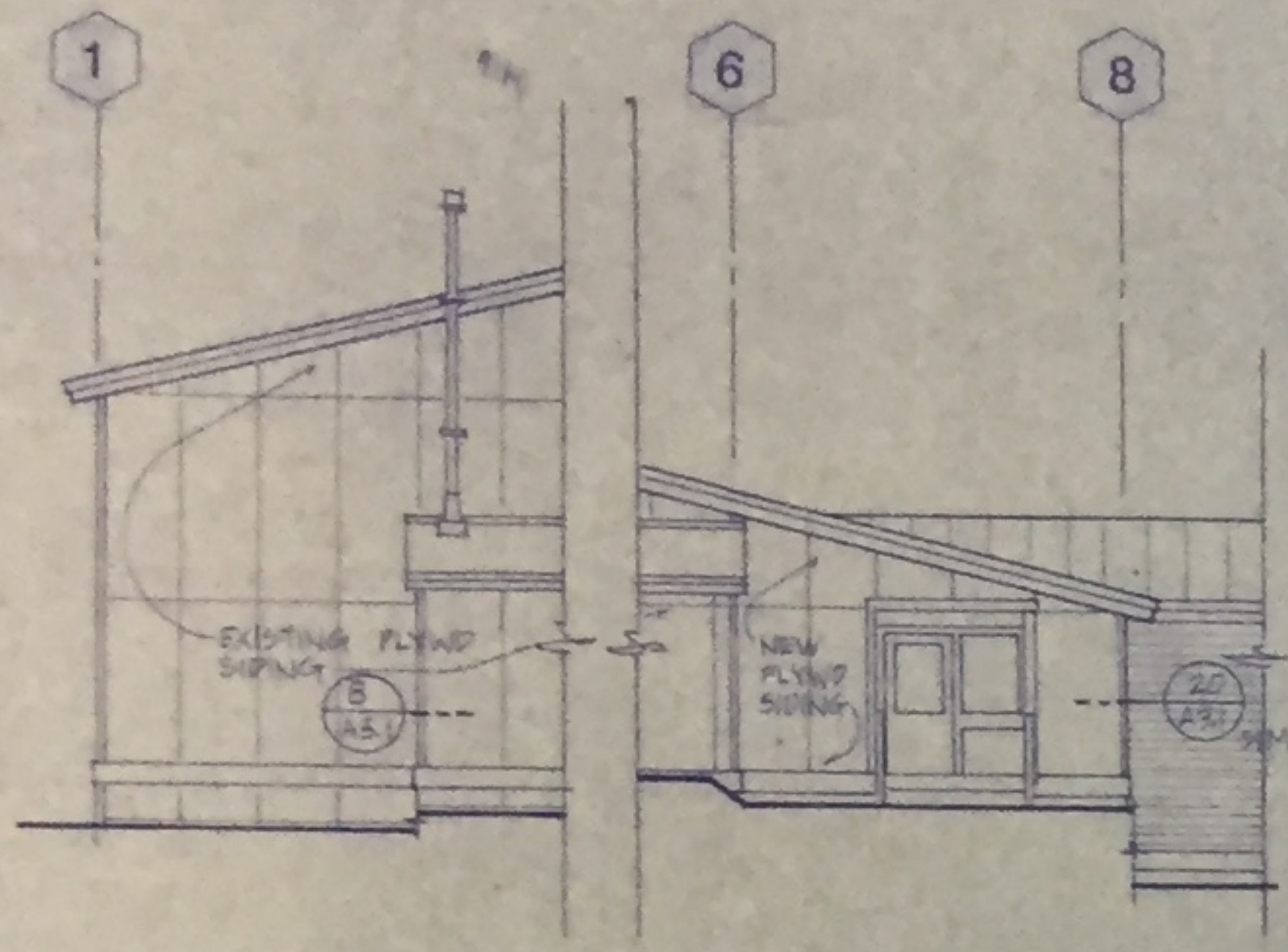
drawn SE
 checked
 date 7-25-86
 revisions

job no. B-435
 des. title
INTERIOR FINISHES FLOOR PLAN
 sheet no.
A 2.5

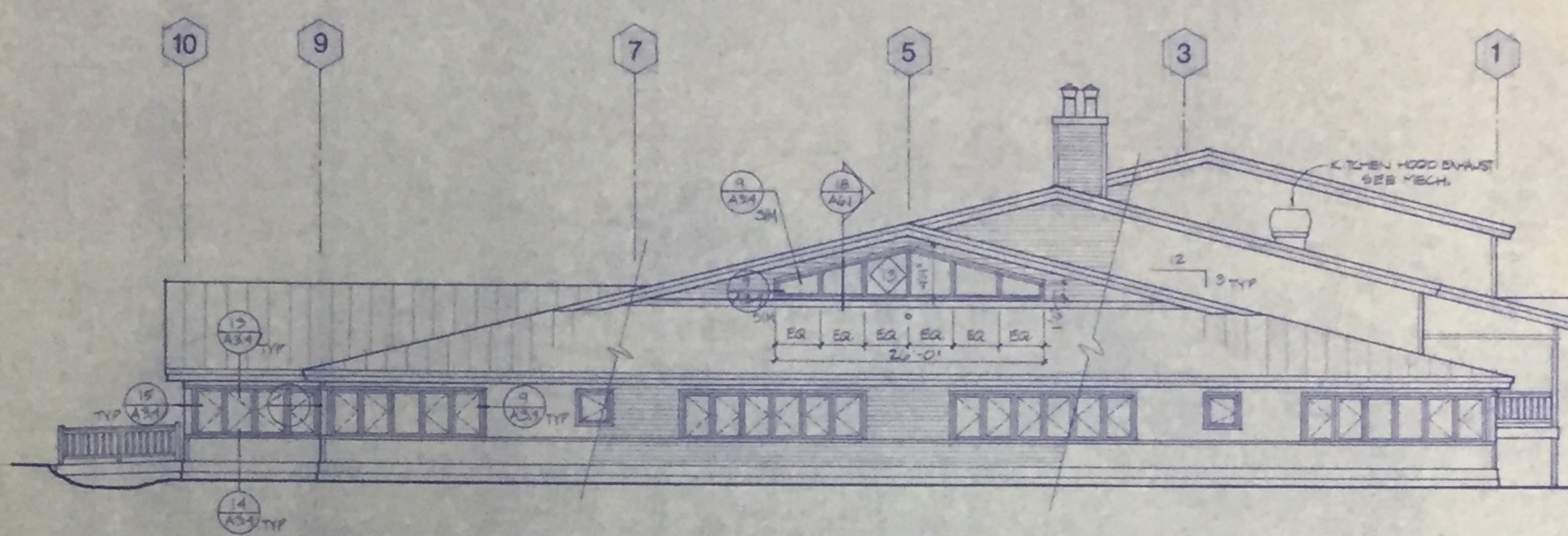


kumin associates, inc.
architects & planners
200 S. Street, Suite 202 • Anchorage, Alaska 99501 • 907/768-8877

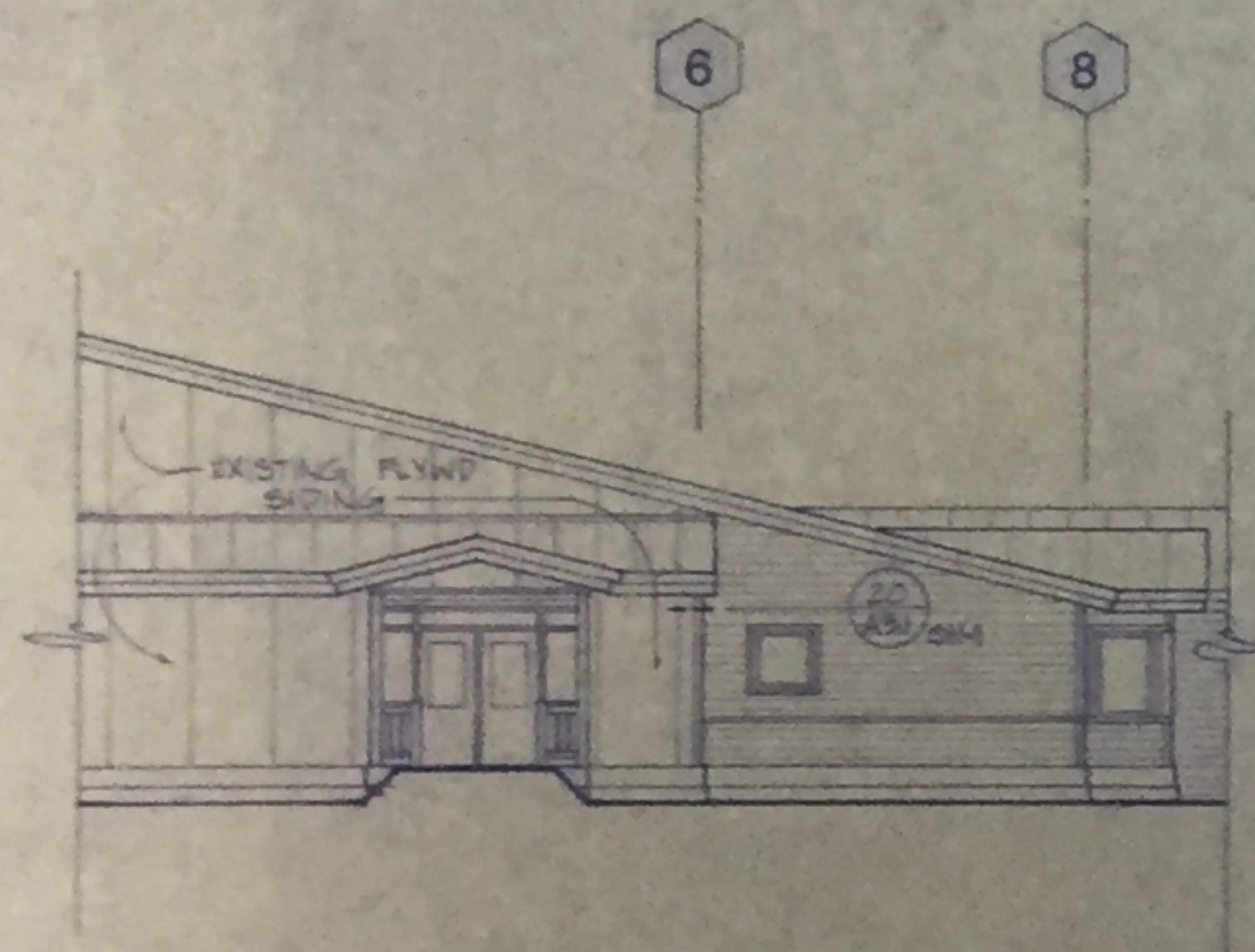
HOLY CROSS SCHOOL
HOLY CROSS, ALASKA
IDITAROD AREA SCHOOL DISTRICT
P.O. BOX 105 MCGRATH, ALASKA 99627



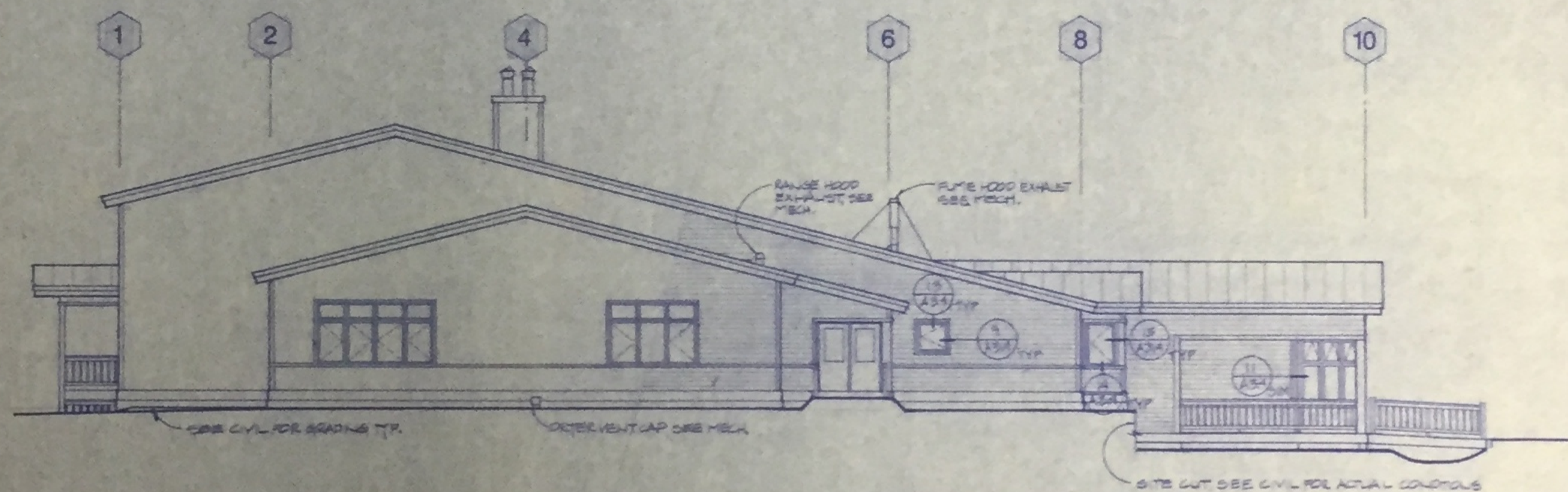
18 **BASE BID - PARTIAL WEST ELEVATION**
1/8" = 1'-0" A.C. 2



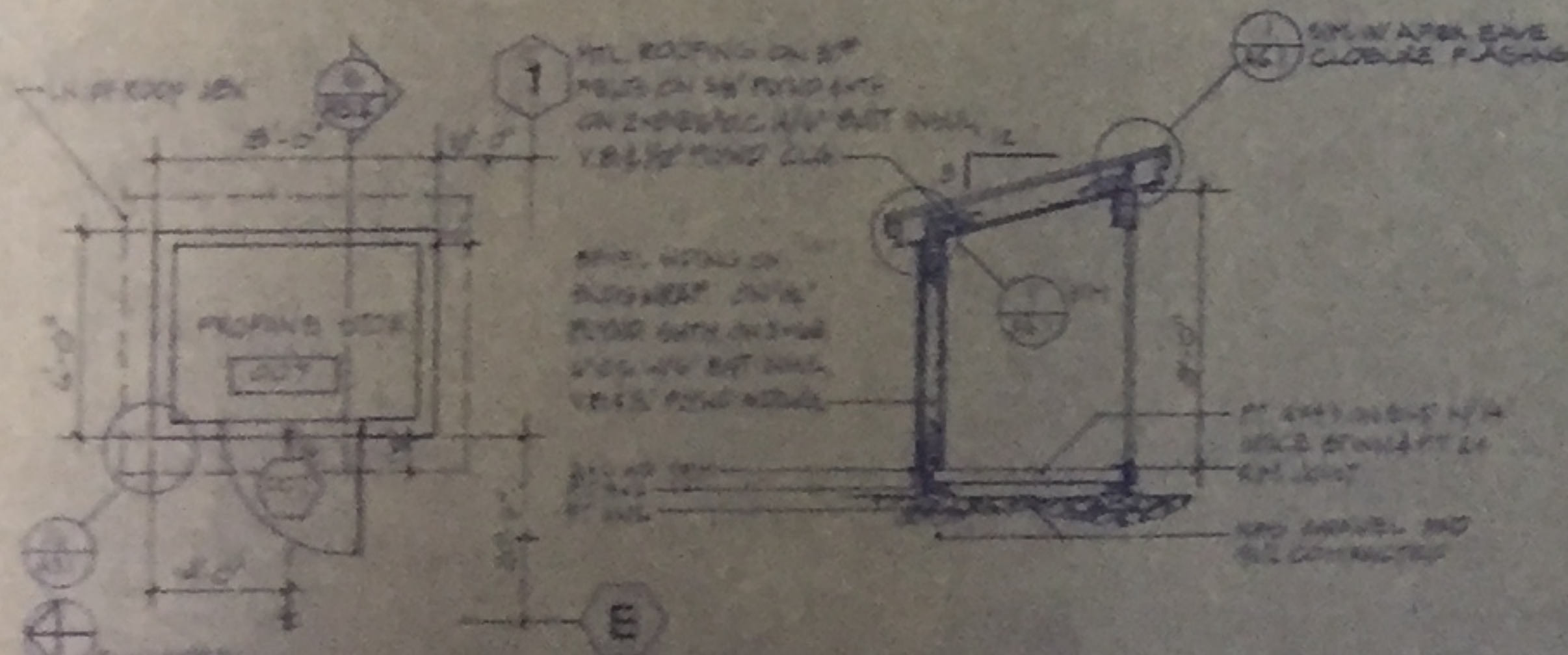
10 **EAST ELEVATION**
1/8" = 1'-0" A.C. 1



19 **ADD ALT. #2 - PARTIAL WEST ELEVATION**
1/8" = 1'-0" A.C. 2



11 **WEST ELEVATION**
1/8" = 1'-0" A.C. 1



20 **PROPANE STORAGE PLAN**
1/8" = 1'-0"

16 **BUILDING SECTION**
1/8" = 1'-0"

drawn: MC JB
checked:
date: 7-25-80
revisions:

job no.: 84-20
desig. title:
EXTERIOR ELEVATIONS & DETAILS
sheet no.: