

August 29, 2022

Pinewood Students and Families,

We are happy to welcome you to the 2022-2023 school year! We are looking forward to a productive partnership with you to ensure our children can achieve their highest potential. We recognize that in order to be successful in school, our children need support from both the home and school. We know a strong partnership with you will make a great difference in your child's education.

We have been preparing our school and classrooms as we anticipate the arrival of our wonderful students and families! We are getting ready for a great beginning to our new school year. As your new principal and assistant principal, we can't wait to see you! Below you will find some information to help you prepare.

Tuesday, August 30th-Pinewood Open House: 5:00 and 6:30pm. We'll be in the gym! Check in to receive your teacher's name, visit your new classroom and teacher and meet your other wonderful teachers and staff as well as Principal Velasco and Assistant Principal Jackson.

Thursday, September 1: First student day for 1st-5th grades

Wednesday, September 7: First day of Kindergarten

Daily Schedule:

9:10: car rider & bus unloading begins and cafeteria opens for breakfast

Monday-Thursday 9:25: student day begins 3:45: dismissal

Friday- 2:15 early dismissal

Car Riders and Walkers Drop off and Pick Up Procedure:

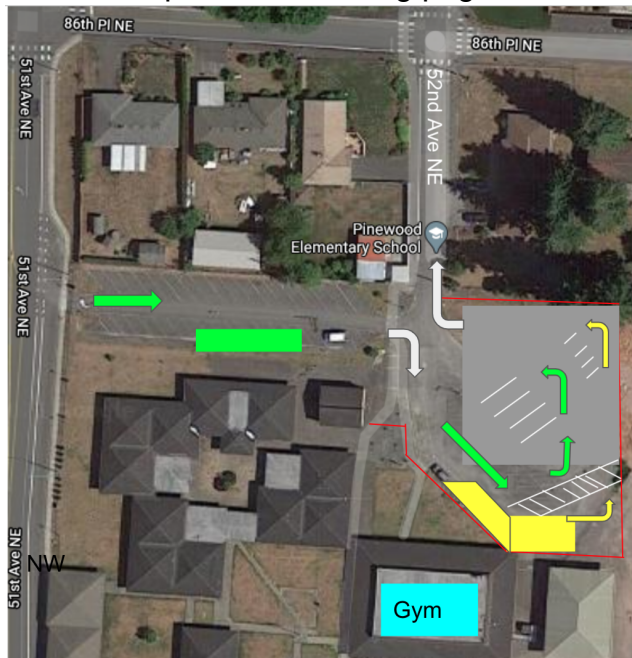
Dear Families,

We care about our families and students and keeping everyone safe. Please use the below map to follow the flow of traffic safely when dropping off or picking up your student(s). In the morning you can drop off at the northeast corner of the gym where one of our staff will greet you and your student. All students will exit from the passenger side onto the sidewalk. In the afternoon you will pull forward to the under-covered area where your student(s) will be safely behind the fence waiting for you. Our paraeducators will be watching and calling your student(s) up prior to your arrival. Kindergartners and

their siblings will be picked up in the north side parking lot. To expedite your pickup. It is important that you also...

- Respect the speed limit, 5 mph
- Put cell phones down
- Model patience, respect and flexibility
- *Stay in your vehicle*

See the map on the following page of the drop off zones.



Drop off zone for all students arriving in cars. Walkers enter with bus riders on south side and via the office ramp on north side.

Pick up for Kinders and siblings here

Pick up for grades 1-5

Everyone:

1. Be consistent in your procedures for student pick up:
 - a. Bus
 - b. Walking with pick up at the south gate
 - c. Walking/Escorting to vehicle in the north parking lot
 - d. Pick up in north parking lot via vehicle
2. Ask your students to meet you at a designated spot and to meet their siblings there as well. They cannot go to their sibling's classroom.

Bussers:

- No change has occurred. Your student(s) will continue to be escorted to the loading zone and monitored by a paraeducator.

South Parking Lot:

- If you walk to Pinewood and are meeting your student(s) on the south side near the bus loop, we ask that you simply wait outside the gate and not enter campus. A teacher will walk your student(s) out to you.
- Do NOT pick up students via your vehicle on the south side of the building near the bus loop. Having students walk out to your car on the south side is highly discouraged as it is not safe for your student to be crossing 84th Street unsupervised.

North Parking Lot Families Walking or Exiting Vehicle:

- Wait in front of the office, outside the fenced area, and not going past the “wait here signs” so that our teachers can walk their students out safely.
- Do NOT enter campus even after the bell rings. The bottleneck that is occurring on the walkway between the K-Building and the multi-purpose building is confusing our youngest students and blocking visual access for our teachers. Please let your student come to you.

North Parking Lot Families Driving In:

- If you are driving into the north lot to pick your student(s) up, do not block the residential driveways. Some neighbors have medical needs and may need to exit quickly.
- Have your student(s) get into the car from the passenger side. This is not only faster, but safer.
- Drive all the way up to the under-covered area. Students will not be allowed to enter waiting cars further down the line or in the side parking lot. Left turns from the side parking lot will no longer be allowed. This is to increase traffic flow and, again, to maintain security (i.e., we can see what car students enter and because students are waiting behind the fence under the covered area there is no opportunity for a car-pedestrian accident.)
- Talk to your student(s) about going directly to the pick-up area after school and watching for you so they are ready when you drive up. If your student is not at the parent pick up location, the under-covered area, or does not respond when the para calls for them, then you will be asked to loop around, no exceptions.

Also, for the safety of our students, and even though we love dogs, they are not allowed on campus at arrival, during school hours, or during pick up. If you are on school grounds before or after student hours, know that there is a dog-leash ordinance that Marysville Police Department strongly enforces. We do not wish unnecessary fines on anyone.

We thank you for your partnership in making sure each student is learning until the last moment and in helping us keep each student safe. If you have any questions, please call the front office at 360. 965.1300. The office staff, including administration, is always available to you. We are “Better Together”!

Sincerely,
Erika Velasco
Pinewood Principal

Cassandra Jackson
Pinewood Assistant Principal