

HILLS-BEAVER CREEK ELEMENTARY

Parent Connection October 18, 2018



Fall Conferences

Parents signed up for conference times for one of two conference dates. The first night of conferences will be on **November 15** and the second will be on **December 13**. Reminders of times and dates will be sent home over the next week. Classroom teachers will be assigning times to those that did not sign up.

K-2 Concert Date Change

The K-2 winter music concert was originally scheduled for Friday, December 14. The concert date **has been changed to Monday, December 3**. It will be held at the elementary gym at 7:00.

Fall Festival

We are in the planning stages of our Fall Festival. Students will participate in the festival on October 26. **Parents can help to support the festival by volunteering or making a donation.** Please contact the elementary office if you are willing to help.

Community Education Update

Sign up for 5th and 6th grade basketball ended last week. We will meet with coaches and plan practices this week. More information concerning K-4 basketball will be sent home next week.

Walk, Bike, Fun!

Walk! Bike! Fun is a program that students participated in during PE class over the past week. Bicycles and helmets were provided by the program. More information on the program is included in this newsletter. Thanks to Mr. DeBoer for organizing the program

Unity Day

Students are encouraged to wear **ORANGE** next Wednesday, October 24 in recognition of Unity Day. Unity Day is a culmination of events that students have participated in during October. October is Anti-Bullying month. Thanks to our school social worker Mrs. Breuer for organizing events for the month.

Art Student of the Week

Carielynn Merson is our Art Student of the Week! Carie used a very colorful mixed media drawing of a ukulele. She included the tuning pegs, strings, and frets. Then she colored the ukulele with oil pastel and did a rainbow of color. The background was painted using even brushstrokes of pink. Good Job Carie!



News and Notes

- Unity Day will be on **October 24**
- Fall Festival is planned for **October 26**
- **November 2** will be the end of the quarter and will be an early dismissal
- Pastries with Parents is scheduled for **November 16**
- Grandparents Day is scheduled for **November 16**
- For more information please check the school website at hbcpatriots.com

Mr. Phelps-Elementary Principal



UNITY DAY

OCT 24, 2018

**WEAR AND SHARE
ORANGE
IN SUPPORT OF
BULLYING PREVENTION**

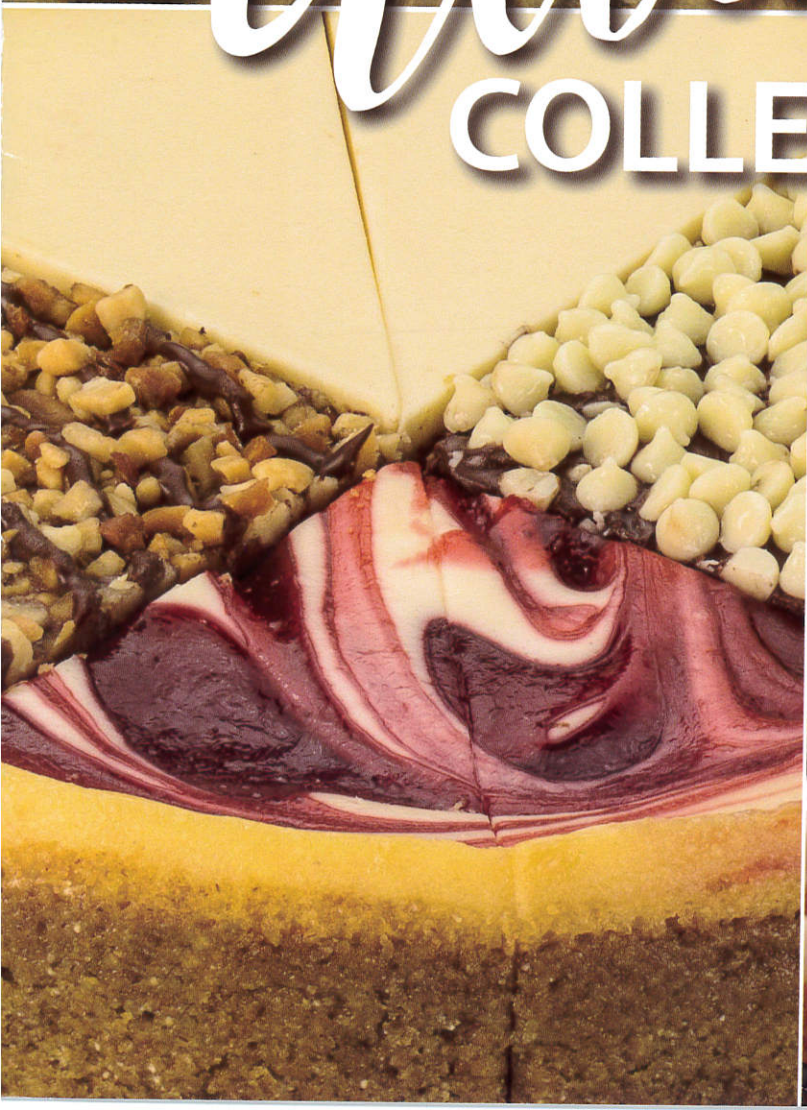
**TOGETHER
WE ARE UNITED FOR
KINDNESS
ACCEPTANCE
INCLUSION**

**#UNITYDAY2018
PACER.ORG/BULLYING**

Sponsored by PACER's National Bullying Prevention Center since 2011



THE
Ultimate
COLLECTION



HILLS BEAVER CREEK ELEMENTARY FUNDRAISER



THE SCOOP

Your sales brochure and collection envelope are included.

We are raising money for Hills Beaver Creek Elementary .

Thank you for your participation!

ONLINE ORDERING

There are over 500 items available at the online store.

(Free shipping for online orders over \$80)

Register yourself for online sales at greatplainsfundraising.com,

use code **9522**



DATES TO REMEMBER

Order Forms & Money Due:

Friday, 10/26/2018

**Product Delivery* & Order
Pick-up:**

**Thursday, 11/15/2018
3:00-7:00PM**

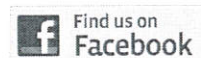
**Some products require refrigeration.
We recommend products be delivered
or frozen right away.*

*Follow the steps below to ensure
our sale is a success.*

1. Put your **full name** and **phone #** on order form and prize envelope.
2. Parents please accompany your children to sell to family, friends, and co-workers. NO DOOR-TO-DOOR SELLING! NEVER SELL TO STRANGERS.
3. This is a pre-paid sale. All money is to be collected **right away** with orders.

**PLEASE MAKE CHECKS
PAYABLE TO:
Hills Beaver Creek PTO**

Great Plains Fundraising is your local, community fundraising partner.



www.facebook.com/greatplainsfundraising



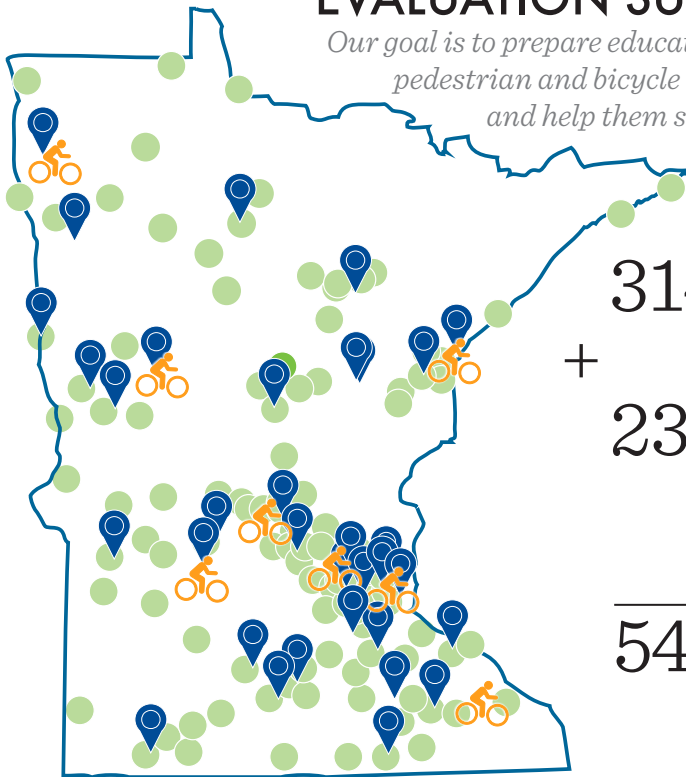
October 2018 Lunch Menu

Sunday	Monday	Tuesday	Wednesday	Thursday	Friday	Saturday
	1 Chicken Fried Steak Baked Beans Pears Bread	2 Tomato Soup Grilled Cheese Sandwich Broccoli Applesauce Cup	3 Chicken Gravy over Mashed Potatos Peas Peaches Dinner Roll	4 Taco Haystacks Carrots Pineapple Bread	5 French Bread Pizza Green Beans Apple Slices	6
7	8 Grilled Chicken Sandwich California Blend Peaches	9 Lasagna Hotdish Green Beans Mandarin Oranges Dinner Roll	10 Salisbury Steak Mashed Potato w/gravy Peas Tropical Fruit Bread	11 Sub Sandwich Chips w/Salsa Baked Beans Mixed Fruit	12 Chicken Fajita Bowl Peas Pears	13
14	15 Max Sticks w/sauce Broccoli Pineapple	16 Walking Tacos Carrots Applesauce	17 Tater Tot Hotdish Peas Peaches Dinner Roll	18 Chicken Strips Baked Beans Mandarin Oranges Bread	19 No School	20
21	22 Hamburger on a bun Baked Beans Pears	23 Scalloped Potato w/ham Peas Mixed Fruit Bread	24 Chicken Patty on a bun Green Beans Peaches	25 Spaghetti Carrots Pineapple Garlic Breadstick	26 Pizza Lettuce Tropical Fruit	27
28	29 Meatball Sub Pizza Green Beans Mandarin Oranges	30 Corn Dog Chips w/salsa Baked Beans Applesauce	31 Chicken Nuggets Mashed Potato w/Gravy Corn Peaches Dinner Roll	This Institution is an equal opportunity provider.	Milk is served with all meals. All breads are whole grain rich. Menu is subject to change without notice.	

WALK! BIKE! FUN!

EVALUATION SUMMARY FROM BIKEMN

Our goal is to prepare educators to teach children the skills needed for pedestrian and bicycle safety, as well as to build confidence and help them stay safe, active, and healthy.



- WBF School Districts Represented
- 📍 WBF Training Location
- 🚲 MnDOT Awarded Bike Fleet

61 Trainings have been requested.

40 Trainings have been held.

314 Teachers

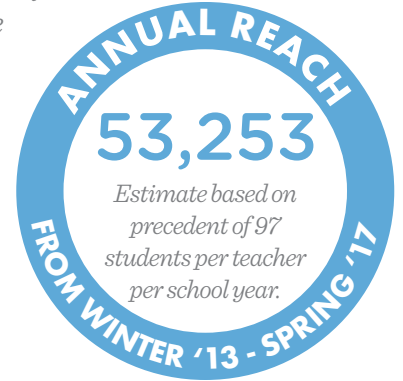
Physical Ed., Health, DAPE, Science, Classroom Teachers

+

235 Educators

Public Health, Law Enforcement, Community Education, Park and Recreation Departments

549 Participants



Overall Rating

4.5 of 5

Participants rated the training a 4.5 on a scale of 1-5, "5" being excellent.

Participant feedback....

85% Strongly agreed or agreed that trainers were helpful and presented well.

83% Strongly agreed or agreed that the resources provided were useful.

“ Most helpful features of the training:

Going through the lesson plans and physically doing it outside. Biking through town was amazing. Great learning opportunity.

It was helpful to have both the classroom training before, and then the hands-on experience afterwards.

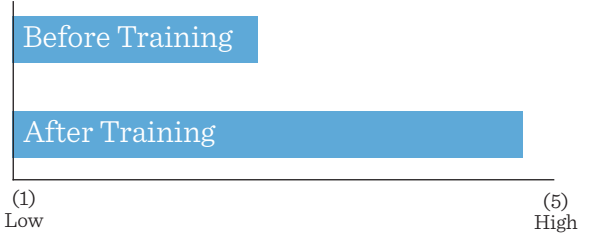


Curriculum Placement

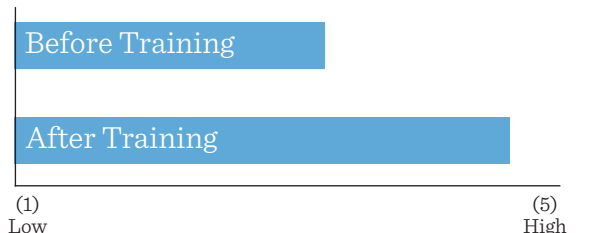
82% Of participants plan to place *Walk Fun!* in 1st and 2nd grade.

80% Of participants plan to place *Bike Fun!* in 4th and 5th grade.

Confidence to teach the Walk! Bike! Fun! curriculum



Knowledge of biking and walking safety skills



Participants were asked to rank how important the following are in teaching pedestrian and bicycle safety education at their schools or organizations:

School Support

77%

ranked this as very important.

Peer Teachers

77%

ranked this as very important.

Parent Engagement

62%

ranked this as very important.

Schools Supported by:

160 Substitute teacher pay reimbursements.

314 Teachers receiving 7 CEUs.

Two Years of Technical Assistance Requests

Bike Fleet

68%

Bike Rodeo

26%

Access Resources

23%

Present

13%

Other

27%

Technical Assistance Notes:

- Bike Rodeo demand created the development of "Walk! Bike! Fun! Ambassadors."
- Student educational materials distributed to classrooms and at community transportation safety events total 42,675.
- The online curriculum has been downloaded 280 times.



People Talking About Walk! Bike! Fun!

37 BikeMN newsletter articles and blog posts.

11 Newspaper articles.

39 BikeMN Facebook Posts, reaching 13,482 people.

4 TV news stories.

103 Members of the Walk! Bike! Fun! Educators Private Facebook Group.

39%

of Educators Foresee Barriers

Participants anticipate the following barriers to implementing the program at their school or organization, citing:

- Lack of adaptive equipment and resources for first time riders.
- Not having enough adult volunteers for a community bike ride with students.
- Finding safe infrastructure for walks and bike rides.
- Tight squeeze for time.
- Bike fleet needed.

