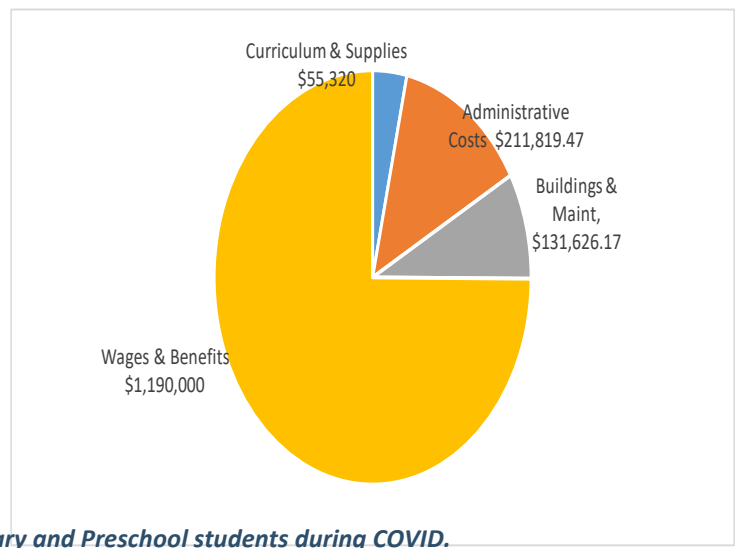
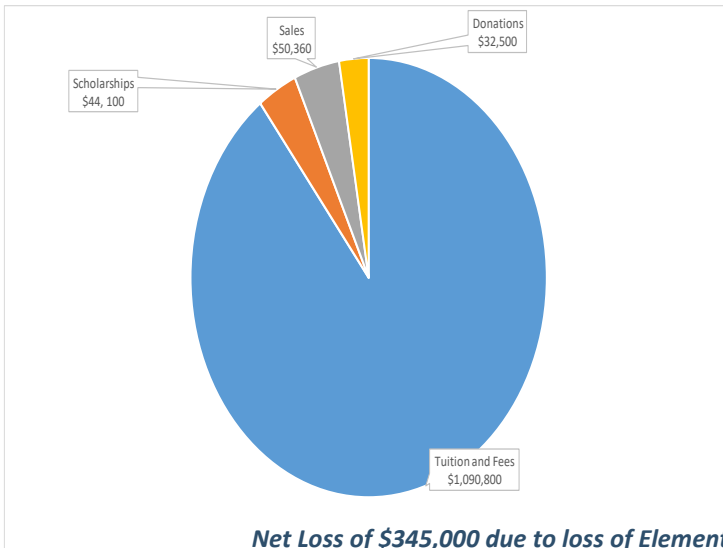


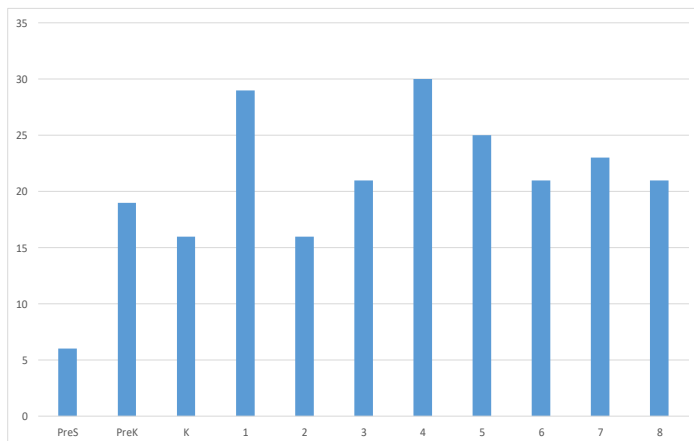
Our Finances



Net Loss of \$345,000 due to loss of Elementary and Preschool students during COVID.

Income and expenses do not include PTG fundraisers, PTG Dues, PTG Expenses or Classroom funds or expenses that are not used as a part of the operation of the school.

Class Size by Grade Level



Staffing

- One full time Principal
- One full time Preschool Director
- One full time Office Administrator
- One full time receptionist
- Nine full time elementary teachers
- Four part time Preschool Teachers
- One part time PE teacher (shared with St. Bernard's)
- One teacher assistant
- One full time cafeteria supervisor
- One part time cafeteria assistant
- One part time extended care supervisor

Giving to St. Anthony's Catholic School

Every year, donations from parents and friends of St. Anthony's Catholic School help students take advantage of all that St. Anthony's has to offer.

Contributions from alumni, parents of alumni, grandparents, parents, staff, and friends of St. Anthony's help defray the costs of a Catholic education that tuition revenue alone does not cover. Our goal for the Annual Scholarship Fund is \$100,000. These funds directly support Catholic students with tuition assistance here at St. Anthony's Catholic School.

Please join us and help us reach 100% participation from the entire school community! Every gift counts.

To donate, you may click on the school website www.sasmanteca.org/scholarships--giving.html or drop a check in the Mass offertory basket indicating St. Anthony's Catholic School.



St. Anthony's Catholic School

2020 Annual Report



We kick off Catholic Schools Week with our 2020 Annual Report. St. Anthony's Catholic Schools incredible students are thriving amid this pandemic. This report represents an overview of the results from the July 1, 2019 - June 30, 2020 fiscal year, as well as a peek into 2021.

Preschool through 8th grades



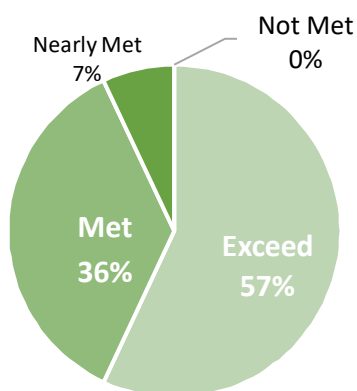
**227 total
students**



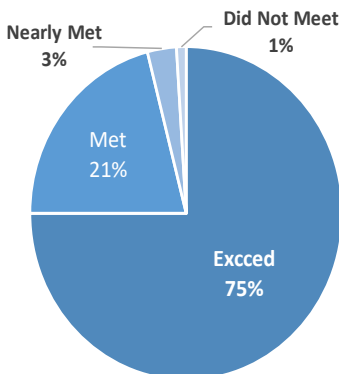
**18% receive tuition
assistance**
+3% from 2018-2019

Learning and Excelling Every Day

**Meeting English
Language Arts Standards**



**Meeting Math
Standards**



Assessment scores are based upon Renaissance STAR scores from March of the 2019-2020 school year. Due to COVID, the final assessments were not able to be given at the end of the school year. Percentages above are how students would comparatively do on the Smarter Balanced Tests given by California Public Schools.

Curriculum & Technology



2020 brought with it the Corona virus which changed the way we taught.

- Teachers continue to teach in their classrooms to a hybrid of students both in person and at home.
- We purchased additional devices for students to log on and learn at home.
- We purchased stand alone cameras to aid teachers in teaching to kids both in the classroom and at home.

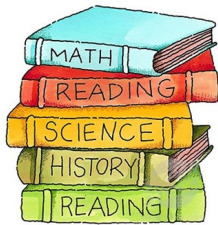
Registration is now open for the 2021-2022 school year. Please call to set up a tour of the school, have your child shadow a student for a day, or just inquire on how we can help meet your child's educational needs.

www.sasmanteca.org

Curriculum & Technology



1:1 Devices at all
grade levels



Core curriculum for all
subjects purchased within
the past four years, at all
grade levels.

Curriculum & Technology



2020 brought with it the corona
virus which changed the way
we taught.

- Teachers continue to teach in their classrooms to a hybrid of students both in person and at home.
- We purchased additional devices for students to log on and learn at home.
- We purchased stand alone cameras to aid teachers in teaching to kids both in the classroom and at home.
- We invested in online curriculum to supplement teaching strategies.