



# HURON VALLEY SCHOOLS 2020 Bond Program

Bid Pack #5 - Construction Progress Update

6/13/22

## Apollo Early Childhood Center



East Elevation of Secured Entry Addition - Brick, Spray Foam and Z-Girts for Metal Panel are being installed



South Elevation of Secured Entry Addition - Brick, Spray Foam and Z-Girts for Metal Panel are being installed



# HURON VALLEY SCHOOLS 2020 Bond Program

## Bid Pack #5 - Construction Progress Update

6/13/22

### Apollo Early Childhood Center



Drywall Finishing is progressing in the Secured Entry Addition Reception Room



Demolition is progressing in the Old Multi-Purpose Room - Zone A





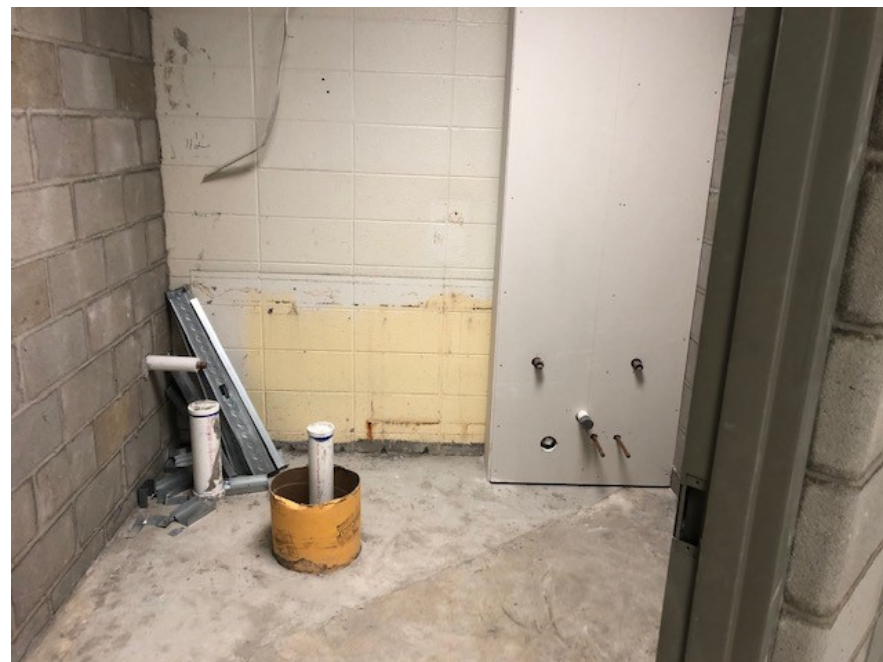
# HURON VALLEY SCHOOLS 2020 Bond Program

Bid Pack #5 - Construction Progress Update

6/13/22



Storage Trailers have been Mobilized for Move-out of Furniture & Furnishings



One of the 13 New Toilet Rooms are being prepared for Hard Tile Installation



# HURON VALLEY SCHOOLS 2020 Bond Program

Bid Pack #5 - Construction Progress Update

6/13/22

## Country Oaks Elementary School



Temporary Enclosure is in Place for Secured Entry Addition to allow interior finish trade work to continue



Metal Stud Partitions are built in the Secured Entry Addition





# HURON VALLEY SCHOOLS 2020 Bond Program

Bid Pack #5 - Construction Progress Update

6/13/22

## Country Oaks Elementary School



Hollow Metal Door Frames with Sidelights for Secured Entry Addition have been delivered



Z-Girts for Metal Panels are being installed. Temporary Enclosure of Storefront Window Openings has been installed to allow interior finish work to continue.



**HURON VALLEY SCHOOLS 2020 Bond Program**  
Bid Pack #5 - Construction Progress Update  
6/13/22

**Heritage Elementary School**



West Elevation of Secured Entry Addition - Brick, Spray Foam, Z-Girts for Metal Panel and Temporary Enclosure are in place



West Elevation of Secured Entry Addition - Canopy Wood Blocking & Temporary Enclosure are in place





# HURON VALLEY SCHOOLS 2020 Bond Program

## Bid Pack #5 - Construction Progress Update

6/13/22

### Heritage Elementary School



Overhead Piping, Ductwork and Metal Stud Walls are being installed in the Secured Entry Addition



Metal Stud Walls are being built at Tie-in with the Secured Entry Addition



**HURON VALLEY SCHOOLS 2020 Bond Program**  
Bid Pack #5 - Construction Progress Update  
6/13/22

**Kurtz Elementary School**



Hollow Metal Door Frames with Sidelights have been set for Offices in the Secured Entrance Addition



Hollow Metal Door Frames with Sidelights have been set for Offices in the Secured Entrance Addition





**HURON VALLEY SCHOOLS 2020 Bond Program**  
Bid Pack #5 - Construction Progress Update  
6/13/22

**Kurtz Elementary School**



Overhead plumbing, sheet metal duck work and in-wall electrical rough-in are underway in the Secured Entry Addition



Face brick at the new main entrance is being installed



**HURON VALLEY SCHOOLS 2020 Bond Program**  
**Bid Pack #5 - Construction Progress Update**  
**6/13/22**

**Kurtz Elementary School**



Cold Formed Metal Framing for Canopy Eyebrow is being installed



Temporary enclosure of the storefront window openings has been installed to allow finish trade work to continue in the Secured Entry Addition





**HURON VALLEY SCHOOLS 2020 Bond Program**  
Bid Pack #5 - Construction Progress Update  
6/13/22

**Spring Mills Elementary School**



North & West Elevations of Gymnasium with Damproofing, Brick and Through-Wall Flashing being installed



North Elevation of Gymnasium with Damproofing, Brick and Through-Wall Flashing at Ramp being installed



# HURON VALLEY SCHOOLS 2020 Bond Program

## Bid Pack #5 - Construction Progress Update

6/13/22

### Spring Mills Elementary School



North Elevation of Gymnasium with Damproofing, Brick and Through-Wall Flashing at Ramp being installed



East Elevation of Classrooms - Damproofing, Brick and Wood Blocking at the Parapet Cap is being installed





# HURON VALLEY SCHOOLS 2020 Bond Program

Bid Pack #5 - Construction Progress Update

6/13/22

## Spring Mills Elementary School



South Elevation of Classrooms - Damproofing, Brick and Wood Blocking at the Parapet Cap is being installed



Interior Overhead Storm Piping, Electrical & Water Piping in Corridor Outside the New Classrooms is being installed