



ARKANSAS
ARTS ACADEMY
Aspire. Achieve. Advance.

May 10, 2016
High School Cafeteria
(Middle School Orchestra Concert in PAC)

1. Call to order
2. Establish quorum / Roll Call
3. Pledge of Allegiance
4. Comments from the Public
5. Consent Agenda

- Approve minutes from April, Regular School Board Meeting
- Approve April Financial Report
- Enrollment Report – Lottery Data

6. New Business

Principal Board Report - Barb Padgett (HS)
Budget Report – Nathalie (new positions)
Remainder Facility Funding
High School Update
K-8 Canopy Update
Portal – Erate – Conner Dohse
Graduation – Saturday, May 14, 2:00 -3:00
Survey
Vision Committee – June 7 5:30 – Before Board Meeting- Mary Ley
Bonus Distribution

7. Discussion of items since publication of the agenda
8. Personnel: Hiring/Renewal/Promotion/Demotion/Transfer/Non-Renewal/Termination

Executive Session
9. Adjournment

10. Upcoming Events

- 11th – 6:30pm – High School Orchestra
- 13th – 5:30pm – Annual K8 Art Show
- 14th – Graduation
- 18th – Link-Up performance in PAC
- 20th – 6:30pm – K-2nd Grade Musical
- 23rd – 8th Grade Graduation
- 25th – Last Day of School

Memorandum

To: Board of Education and Mary Ley

From: Nathalie Brunell, CPA

Date: May 5, 2016

RE: Financial Report for the Period Ending April 30, 2016

Overall

The financial statements reflect 83% of the year completed.

The Academy's cash balance at April 30, 2016 is \$1,571,599.

Operating Summary

- Year-to-date operation expenses and revenues show operational revenues exceeded expenditures by \$522,637.
- Operation revenue is currently less than last year by \$571,730, which is due to grant proceeds received in the prior year for technology purchases.
- Operating expenses are less than last year by \$667,484, which is due to the technology purchases from the above grant and facilities expenditures, which are not funded by State Facility funds.

Operating Expense Report

Operating expenses are in line with the prior year, with the exception of Technology and Supplies. This is due to the grant received last year to purchase computers, I-pads and software.

Grant Information

Grant 2014-1330

Technology grant in the amount of \$452,956. Proceeds was spent to purchase Computers, I-pads and software. This grant is now complete.

Grant 2014-1156

Grant in the amount of \$483,813 to forge a relationship with Crystal Bridges of American Art to use art integration to deliver curriculum content. Proceeds were to be used for salaries, benefits, professional development, consultant fees and supplies/equipment. We currently have approximately \$63,372 remaining to be expended.



ARKANSAS
ARTS ACADEMY
Aspire. Achieve. Advance.

Regular School Board Meeting – 6:30 P.M. April 12, 2016

Arkansas Arts Academy High School Library

1. Call to order at 6:30 P.M.
2. Establish quorum/Roll Call: Tony Beardsley, Joe DeRouen, Alicia Knotts, Mary Ley, Anthony Porchia, and Dave Russell were present. Absent: Howard Alsdorf

Guests in Attendance: Sarah Grace Gretzmier

3. Pledge of Allegiance
4. Comments from the Public: None
5. Consent Agenda

- Approve minutes from March 8th, Regular School Board and Special Board Meeting on Wednesday, March 16, 2016
- Approve March Financial Report
- Motion to approve Consent Agenda by Steve Cox, 2nd by Dave Russell and Motion carried with a 6 – 0 vote.

6. New Business

Principal Board Report –

Matt Young (K8) Mr. Young was attending the Naturals Fundraiser tonight and ask Mrs. Ley to share that 4 students were chosen to attend the America Ballet Summer and one of our students placed 3rd in the state for her writing.

Barb Padgett(HS) Aaron Jones spoke for Ms. Padgett on the Pea Ridge Military Park spring break Archeological dig. Our students were given the opportunity to work with the park director, historians and archeologists in surveying a battle field that has remained untouched since the action dated March 7th, 1862. Hundreds of artifacts were located and several removed for identification.

Our students have also been participating in the Bentonville Film Festival – Women and Diverse Voices. They have filmed and edited interviews with local artists that will be shown during the festival.

Discussion of E-Rates Form 470 – Conner Dohse spoke on how we are utilizing E Rates Form 470 Grants to improve our Network switches and computer lab wiring. We may need to call a Special Board Meeting on April 28th to approve bids. Conner will keep the Board updated on a day and time of meeting.

Special Education Application Approval – Nathalie Brunell presented the applications for the Special Education Title 6B Grants. Dave Russell made a motion to approve the applications for funding, Joe DeRouen 2nd the Motion, The Motion was passed by a 6 -0 Vote.

Vision Committee – June 7, at 5:30 – Before Board Meeting- Mary Ley suggested the final meeting for the year of the Vision Committee be held one hour prior to the next Board Meeting and the Board agreed that work best.

Bonus Discussion – Nathalie Brunell brought before the Board that there were funds available to pay bonuses to all employees. \$1,000 for Full Time employees and \$500 for Part Time. They discussed

how the bonuses would affect our current budget. A motion was made by Alicia Knotts to approve the bonuses, a 2nd by Anthony Porchia and the Motion was passed by a 6 – 0 vote.

Old Bus – Mary Ley was able to negotiate trading in our old school bus and \$2,500 for a much needed Ford F150 pickup truck to move Commodities, computer components and supplies needed by staff.

New Design School of Animation Curriculum Contract Approval- Mary Ley brought before the Board an exciting opportunity to work with The New Design School in offering animation and sound classes to our 10th – 12th grade students. The Board discussed costs involved in providing these courses in addition to the recruiting opportunity of being the only high school in the area to provide these classes. A motion was made by Dave Russell to sign the contract, a 2nd by Joe DeRouen and the motion was passed by a 6 -0 vote.

Credit Hours – Tony Beardsley discussed the requirement of credit hour training for Board Members to be completed by 12-31-16. Mary provided several training opportunities available through year's end.

High School Remodel and Addition Layout – Mary Ley shared updates plans for the high school remodel. The plans and estimated costs will be completed by April 28th when the funder will be in town.

7. Discussion of items since publication of the agenda - None
8. Personnel: Hiring/Renewal/Promotion/Demotion/Transfer/Non-Renewal/Termination
None
9. Adjournment: A motion was made by Dave Russell and 2nd by Alicia Knotts to Adjourn our meeting at 7:20 P.M. and the motion was carried by a 6 – 0 vote.
10. Upcoming Events – Attached

Approved

Tony Beardsley

President

Arkansas Arts Academy

Budget to Actual - Summary of All Funds

Ten Months Ended April 30, 2016

	Annual Budget	Actual Thru April 30, 2016	% of Budget	Actual Thru April 30, 2015
Revenues				
State Foundation	\$ 4,988,236	\$ 4,156,863	83.3%	\$ 4,239,735
AR Recognition Grant	-	-		20,820
Student Growth	74,300	118,435	159.4%	-
Categorical	172,682	145,934	84.5%	142,096
Grants	204,550	204,550	100.0%	793,758
Other state revenues	6,956	21,892	314.7%	4,050
Other Local Sources				
Operating	-	16,338	#DIV/0!	35,283
Activity	-	41,645	#DIV/0!	38,038
Food service	140,000	121,840	87.0%	117,822
Facilities Funding	419,495	322,857	77.0%	-
Federal and state assistance				
Federal Grants	271,426	214,479	79.0%	146,319
Food service	140,000	101,016	72.2%	97,485
Total revenues	<u>6,417,645</u>	<u>5,465,849</u>		<u>5,635,406</u>
Expenditures				
Current				
Instruction	3,802,254	2,696,683	70.9%	3,072,050
Support services	1,896,926	1,664,356	87.7%	1,751,938
Other	714,495	440,237	61.6%	430,850
Total expenditures	<u>6,413,675</u>	<u>4,801,276</u>		<u>5,254,838</u>
Changes in fund balances	<u>\$ 3,970</u>	<u>664,573</u>		<u>380,568</u>
Fund balances, July 1, 2015		<u>907,026</u>		<u>707,416</u>
Fund balances, April 30, 2016		<u>\$ 1,571,599</u>		<u>\$ 1,087,984</u>

Eighty - three Percent of the Year Reported

NOTE/ Above summary represents all funds of the Academy

**Arkansas Arts Academy
Budget to Actual - Operating Funds 1, 2, and 4
Ten Months Ended April 30, 2016**

	Annual Budget	Actual Thru April 30, 2016	% of Budget	Notes	Actual Thru April 30, 2015
Revenues					
State Foundation	\$ 4,988,236	\$ 4,156,863	83.3%		\$ 4,239,735
AR Recognition Grant	-	-	#DIV/0!		20,820
Student Growth	74,300	118,435	159.4%		-
Categorical	172,682	145,934	84.5%		142,096
Grants	204,550	204,550	100.0%	A	793,758
Other state revenues	6,956	21,892	314.7%		4,050
Other Local Sources	-	16,338	#DIV/0!		35,283
Total Revenue	5,446,724	4,664,012			5,235,742
Expenses - Function					
Instruction	3,705,528	2,562,055	69.1%	A	2,984,800
Student Services - Students	140,273	54,901	39.1%		50,098
Student Services - Instruction	97,143	68,284	70.3%		104,708
General Administration	47,807	161,235	337.3%		189,828
School Administration	153,093	191,598	125.4%		249,815
Central Services	139,581	118,909	85.2%		126,746
Maintenance & Operations	1,136,079	955,697	84.1%		927,798
Transportation	23,250	19,724	84.8%		39,604
Facilities	-	8,572	#DIV/0!	B	135,462
Other uses	-	-			-
Total Expenditures	5,442,754	4,141,375			4,808,859
Net Revenues over Expenditures	\$ 3,970	522,637			426,883
Fund balances, July 1, 2015		872,685			701,972
Fund balances, April 30, 2016		\$ 1,395,322			\$ 1,128,855

The operating *fund* accounts for the operations of the District, including debt service requirements

Eighty - three Percent of the Year Reported

A) In 2014-15, the Academy received additional grants to assist with technology funding

B) In the current year, the Academy is receiving facilities funding, therefore, expenditures related to upgrading the facilities are now recorded in fund 3 (building) versus the operating accounts.

Arkansas Arts Academy

Budget to Actual - **Building** Fund 3
Ten Months Ended April 30, 2016

	Annual Budget	Actual Thru April 30, 2016	% of Budget	Notes	Actual Thru April 30, 2015
Revenues					
Facilities Funding	\$ 419,495	\$ 322,857	77.0%		\$ -
Total revenues	<u>419,495</u>	<u>322,857</u>			<u>-</u>
Expenditures					
Current					
Instruction	-	-			-
Support services	-	-			-
Other	<u>419,495</u>	<u>150,257</u>	35.8%	B	<u>-</u>
Total expenditures	<u>419,495</u>	<u>150,257</u>			<u>-</u>
Changes in fund balances	-	172,600			-
Fund balances, July 1, 2015	<u>-</u>	<u>-</u>			<u>-</u>
Fund balances, April 30, 2016	<u>\$ -</u>	<u>\$ 172,600</u>			<u>\$ -</u>

NOTES/

The *building fund* accounts for the acquisition of fixed assets or construction of major capital projects.

The Arkansas Arts Academy currently receives facilities funding from the State of Arkansas

Arkansas Arts Academy

Budget to Actual - **Federal Fund 6**

Ten Months Ended April 30, 2016

	Annual Budget	Actual Thru April 30, 2016	% of Budget	Notes	Actual Thru April 30, 2015
Revenues					
Federal and state assistance	\$ 271,426	\$ 214,479	79.0%	A	\$ 146,319
Total revenues	<u>271,426</u>	<u>214,479</u>			<u>146,319</u>
Expenditures					
Current					
Instruction	96,726	134,628	139.2%	B	87,250
Support services	159,700	93,608	58.6%	B	63,341
Other	<u>15,000</u>	<u>13,812</u>	92.1%		<u>13,709</u>
Total expenditures	<u>271,426</u>	<u>242,048</u>			<u>164,300</u>
Changes in fund balances	-	(27,569)			(17,981)
Fund balances, July 1, 2015	<u>-</u>	<u>2,345</u>			<u>3</u>
Fund balances, April 30, 2016	<u>\$ -</u>	<u>\$ (25,224)</u>			<u>\$ (17,978)</u>

NOTES/

The *federal fund* accounts for the revenue and expenses related to federal programs such as Title I; Title VI-B; Medicaid, etc.

Eighty - three Percent of the Year Reported

A\ Amount represents revenue received from various federal agencies. Revenue is received on a reimbursement basis (with the exception of Medicaid). For example, May expenses are not reimbursed until June

B\ Expenses incurred for federal programs. Expenses range from salaries and benefits to supplies and technology to be used in the classroom

Arkansas Arts Academy

Budget to Actual - Activity Fund 7

Ten Months Ended April 30, 2016

	Annual Budget	Actual Thru April 30, 2016	% of Budget	Notes	Actual Thru April 30, 2015
Revenues					
Other local revenues	\$ -	\$ 41,645	#DIV/0!	A	\$ 38,038
Total revenues	<u>-</u>	<u>41,645</u>			<u>38,038</u>
Expenditures					
Current					
Instruction	-	-			-
Support services	-	-			-
Other	-	20,652	#DIV/0!	A	5,870
Total expenditures	<u>-</u>	<u>20,652</u>			<u>5,870</u>
Changes in fund balances	-	20,993			32,168
Fund balances, July 1, 2015	-	31,996			5,441
Fund balances, April 30, 2016	<u>\$ -</u>	<u>\$ 52,989</u>			<u>\$ 37,609</u>

NOTES/

The *activity fund* accounts for revenues generated from fundraising activities; student fees, athletic gates and donations. Expenses are used for various student activities; scholarships, etc.

Eighty - three Percent of the Year Reported

A\ Amounts can vary from year to year based on the schools fundraising activities

Arkansas Arts Academy
Budget to Actual - Food Service Fund 8
Ten Months Ended April 30, 2016

	Annual Budget	Actual Thru April 30, 2016	% of Budget	Notes	Actual Thru April 30, 2015
Revenues					
Other local revenues	\$ 140,000	\$ 121,840	87%	A	\$ 117,822
Federal and state assistance	140,000	101,016	72%	B	97,485
Total revenues	<u>280,000</u>	<u>222,856</u>			<u>215,307</u>
Expenditures					
Current					
Instruction	-	-			-
Support services	-	-			-
Other	280,000	246,944	88%	C	275,809
Total expenditures	<u>280,000</u>	<u>246,944</u>			<u>275,809</u>
Changes in fund balances	-	(24,088)			(60,502)
Fund balances, July 1, 2015	-	-			-
Fund balances, April 30, 2016	<u>\$ -</u>	<u>\$ (24,088)</u>			<u>\$ (60,502)</u>

NOTES/

The food service fund accounts for transactions related to the food service program of the District.

Eighty - three Percent of the Year Reported

A\ Other local revenue consists of fees charged to students and staff for food

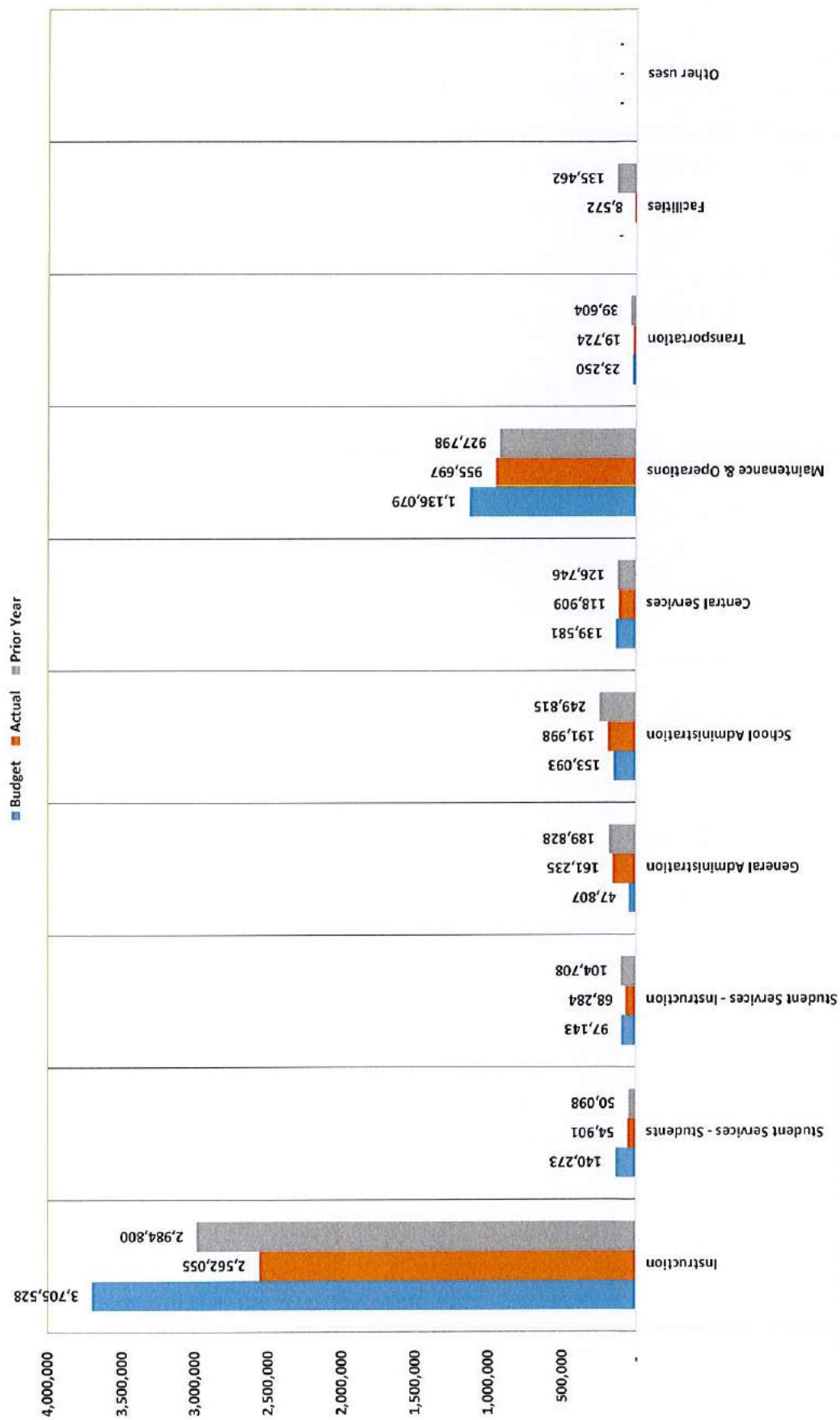
B\ Amount represents federal reimbursements for free/reduced students

C\ Amount represents expenses paid for salaries, food costs and cafeteria supplies

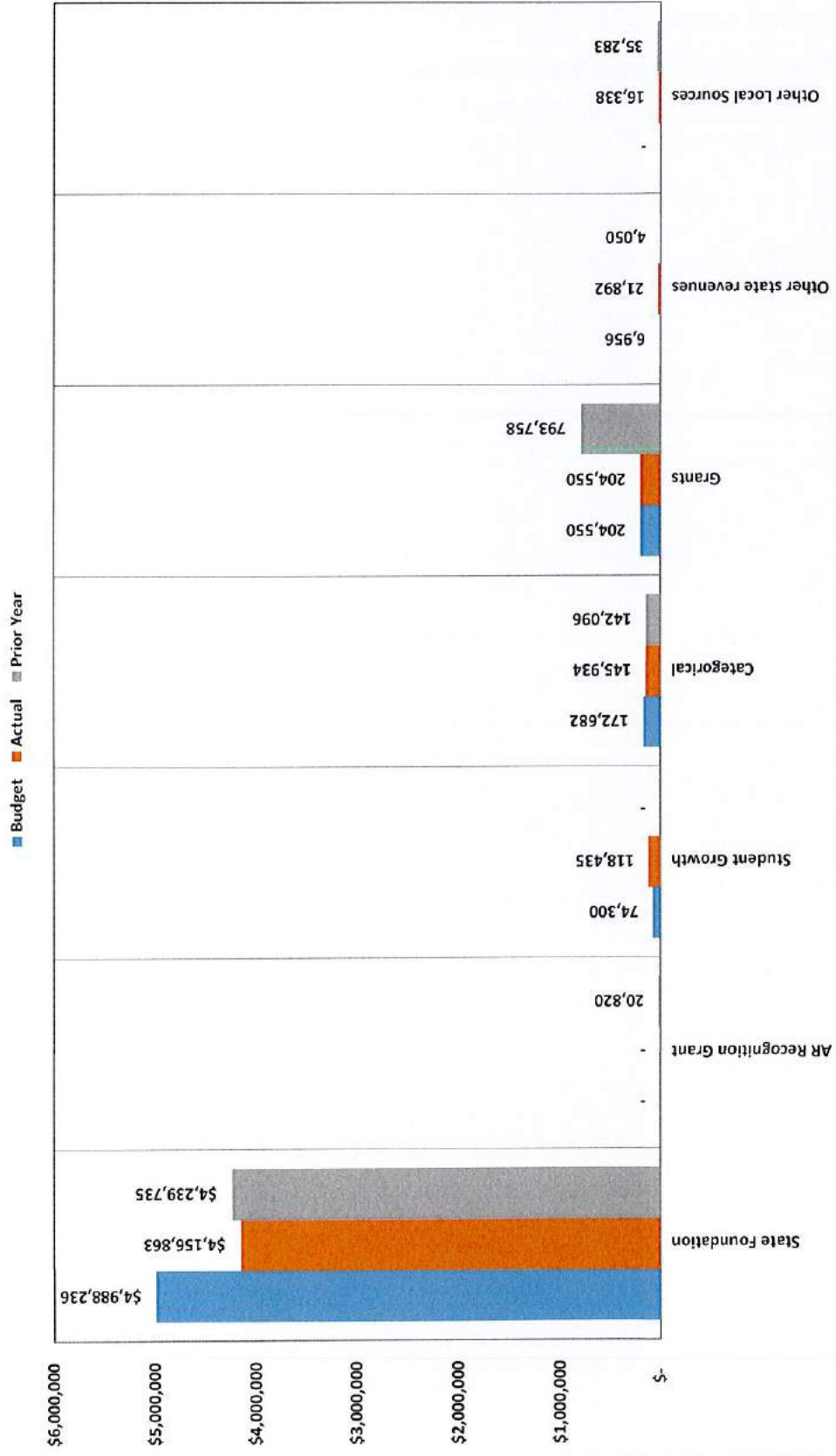
Arkansas Arts Academy
Operating Expenses (Does not Include Building/Federal or Food Service)
Ten Months Ended April 30, 2016

	Annual Budget	Year To Date April 30, 2016	Percentage Of Actual to Budget	Notes	Year To Date April 30, 2015
61110 Certified Salaries	\$ 2,395,807	\$ 1,935,986	80.81%		\$ 1,958,326
61120 Classified Salaries	\$ 351,077	\$ 228,163	64.99%		\$ 295,371
61500 Bonus	\$ -	\$ 83,000	#DIV/0!		\$ 14,661
61700 Substitutes	\$ 41,920	\$ 60	0.14%		\$ 1,224
62XX0 Crt & Cls Benefits	\$ 1,105,663	\$ 603,057	54.54%		\$ 557,600
63200 Instructional Services/Substitutes	\$ 153,934	\$ 68,458	44.47%		\$ 86,825
63310 Professional Development	\$ 14,000	\$ -	0.00%		\$ 7,340
63430 Accounting	\$ 20,000	\$ 22,591	112.96%		\$ 18,568
63440 Legal	\$ 4,000	\$ 485	12.13%		\$ 2,039
63490 Other Professional Services	\$ 6,956	\$ 9,619	138.28%		\$ 44,858
63900 Other Purchase Service	\$ 4,750	\$ 3,997	84.15%		\$ 3,630
64100 Water & Sewer	\$ 7,000	\$ 10,190	145.57%		\$ 5,164
64210 Sanitation	\$ 14,300	\$ 6,389	44.68%		\$ 10,920
64230 Cleaning Services	\$ 200,000	\$ 177,238	88.62%		\$ 83,160
64240 Lawn Care	\$ 10,500	\$ 8,161	77.72%		\$ 8,719
64300 Repairs & Maintenance	\$ 8,700	\$ 70,712	812.78%		\$ -
64400 Rental	\$ 550,701	\$ 457,916	83.15%		\$ 466,478
65210 Property & Liability Insurance	\$ 69,000	\$ 57,837	83.82%		\$ 65,110
65310 Telephone	\$ 50,600	\$ 52,484	103.72%		\$ 44,810
65320 Postage	\$ 3,000	\$ 3,775	125.83%		\$ 1,686
65400 Advertising	\$ 3,000	\$ 3,694	123.13%		\$ 1,942
65500 Printing & Binding	\$ 37,200	\$ 19,945	53.62%		\$ 25,942
65800 Travel/Meals/Lodging	\$ 28,882	\$ 28,322	98.06%		\$ 40,664
66100 General Supplies & Materials	\$ 165,512	\$ 115,798	69.96%		\$ 284,446
66210 Natural Gas	\$ 37,000	\$ 18,364	49.63%		\$ 31,596
66220 Electricity	\$ 84,000	\$ 59,686	71.05%		\$ 62,472
66410 Textbooks	\$ 35,000	\$ 22,894	65.41%		\$ 44,592
66420 Library Books & Periodicals	\$ 11,000	\$ 7,729	70.26%		\$ 12,388
66500 Technology Supplies	\$ -	\$ -	#DIV/0!		\$ 9,455
66510 Software	\$ -	\$ 31,135	#DIV/0!		\$ 87,687
66900 Other Supplies-Tech	\$ -	\$ -	#DIV/0!		\$ -
67000 Bldg & Land Improvement	\$ -	\$ 8,115	#DIV/0!		\$ 135,464
67320 Vehicles	\$ 8,250	\$ 6,541	79.28%		\$ 36,759
67330 Furniture	\$ 10,000	\$ -	0.00%		\$ -
673XX Technology Hardware/Software	\$ 5,000	\$ 3,111	62.22%		\$ 354,471
68100 Dues & Fees	\$ 6,000	\$ 15,660	261.00%		\$ 4,492
68900 Misc Expenditures	\$ -	\$ 263	#DIV/0!		\$ -
69000 Other Uses of Funds	\$ -	\$ -	#DIV/0!		\$ -
	<u>\$ 5,442,752</u>	<u>\$ 4,141,375</u>	76.1%		<u>\$ 4,808,859</u>

Budget to Actual - Operating Funds 1, 2 and 4 Expenditures Thru April 30, 2016



Budget to Actual - Operating Funds 1, 2 and 4 Revenues thru April 30, 2016



Enrollment Numbers

May 6, 2016

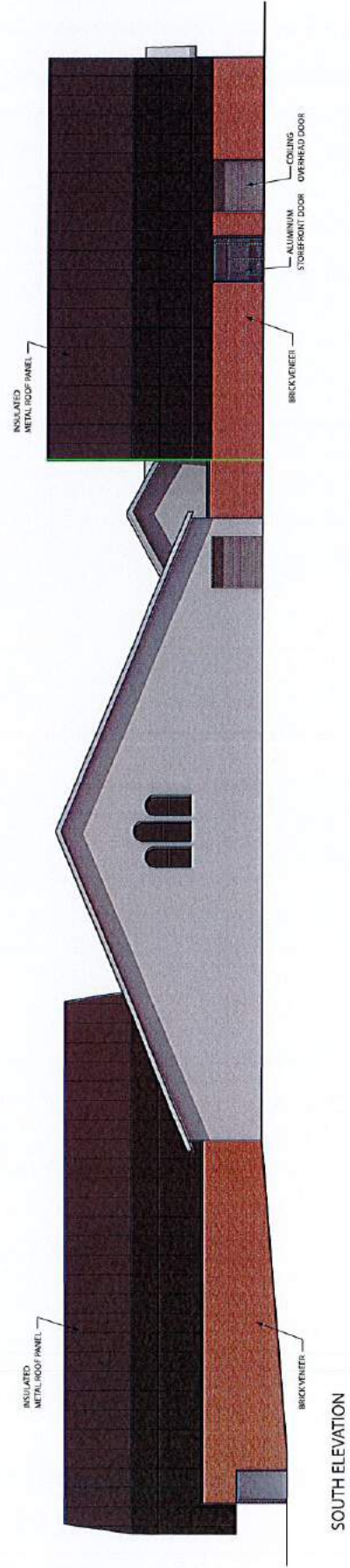
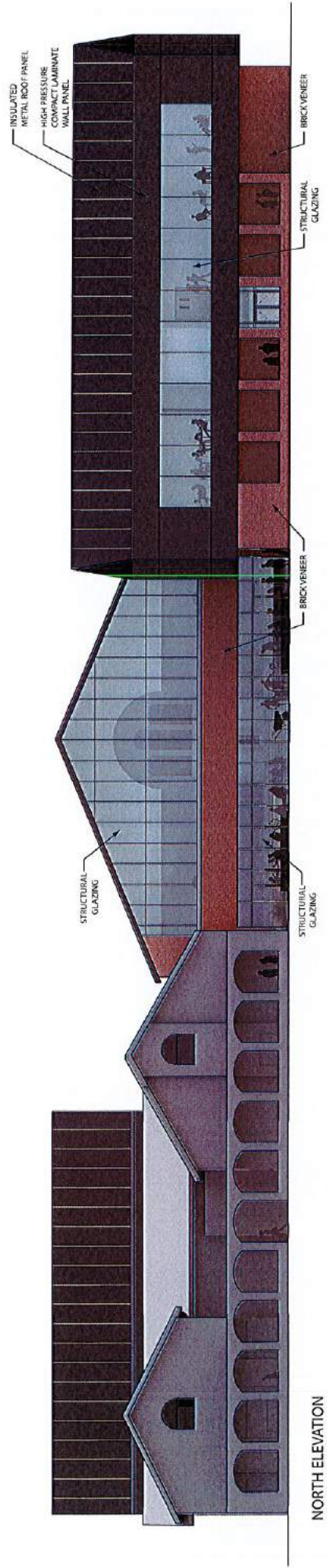
	A	B	C	D
	School	Current Enrollment	Wait List	Projected Fall Enrollment
1				
2	EMS	541	154	571
3				
4	High School	219		241
5				
6	Total	760		812
7				
8	Current Staff	84		
9				
10				
11				
12				
13				
14				
15				
16				
17				
18				
19				
20				
21				
22				
23				
24				
25				
26				
27				5/6/2016



EXTERIOR RENDERING- NORTHWEST CORNER



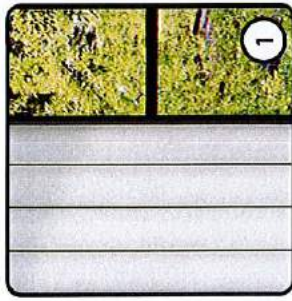
INTERIOR RENDERING- COMMONS/ DINING



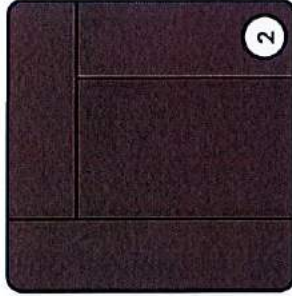


BIRDSEYE VIEW- NORTHEAST TO SOUTHWEST

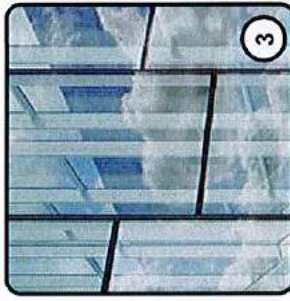
EXTERIOR MATERIALS



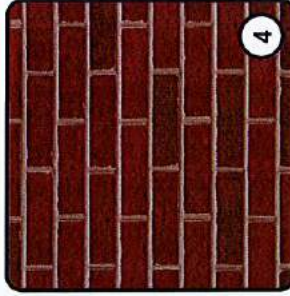
1



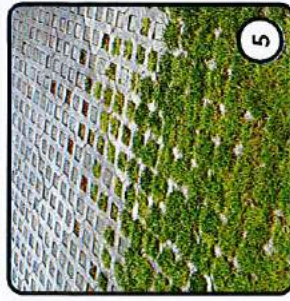
2



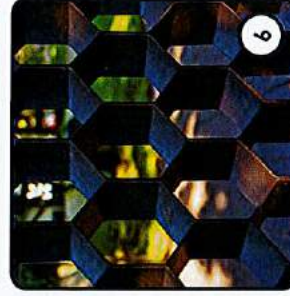
3



4

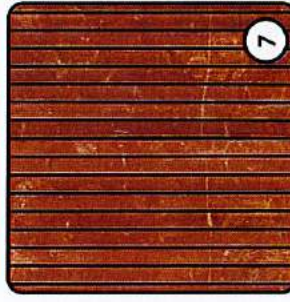


5

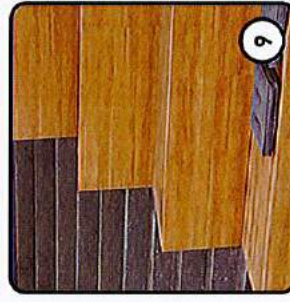


6

INTERIOR MATERIALS



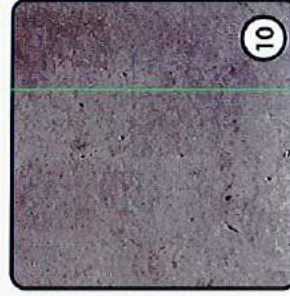
7



9



8



10

1 **KALWALL**

TRANSLUCENT WALL SYSTEM

2 **TRESPA WALL PANEL**

HIGH PRESSURE COMPACT LAMINATE

INSULATED METAL ROOF PANEL

GABLE ROOF COLOR TO MATCH WALL PANEL

3 **CURTAIN WALL**

STRUCTURAL GLAZING ASSEMBLY

4 **BRICK VENEER**

BRICK VENEER CAVITY WALL WITH METAL STUD FRAMING

5 **PERVIOUS PAVERS**

NORTH COURTYARD

6 **PERFORATED METAL SCREEN**

NORTH COURTYARD GATE

7 **WOOD SLATS**

WALLS AND CEILING TREATMENT IN THE DINING HALL, COMMONS

8 **PERFORATED METAL SCREEN**

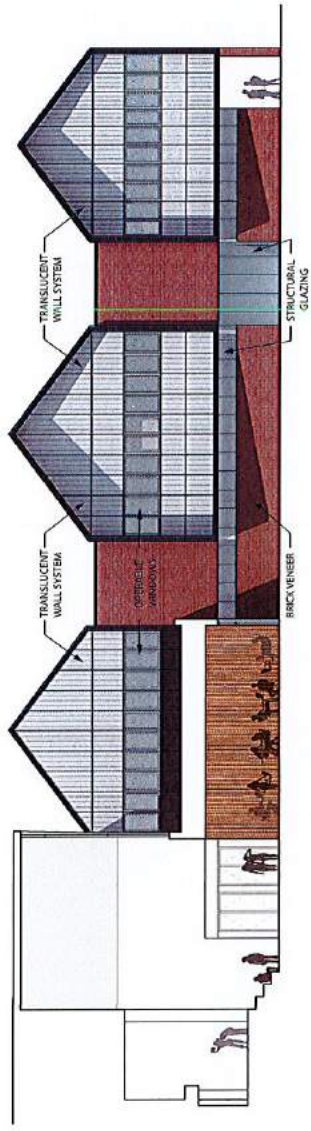
CIRCULATION STAIR RAILINGS AND RISERS

9 **WOOD FLOORING**

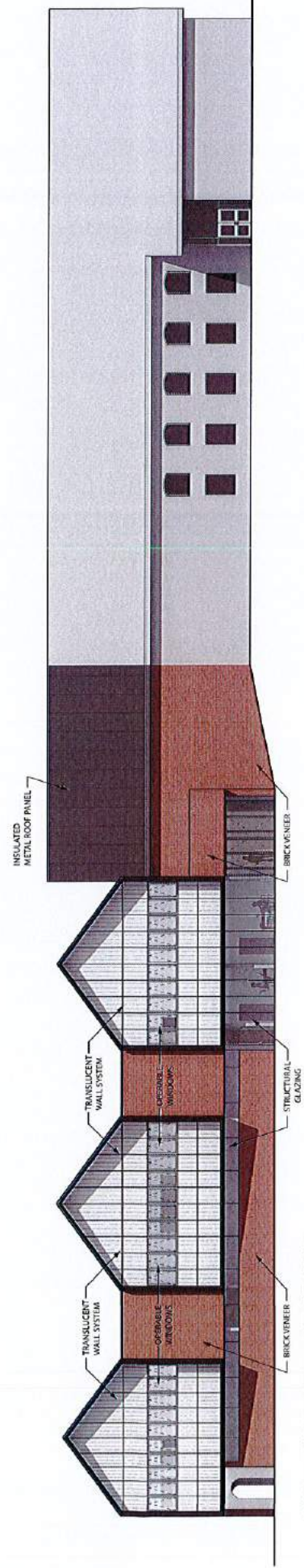
TERRACED SEATING

10 **POLISHED CONCRETE**

FLOORS



NORTHWEST BUILDING- EAST ELEVATION



NORTHWEST BUILDING- WEST ELEVATION



SOUTHEAST COURTYARD- OUTDOOR KILN

ARKANSAS ARTS ACADEMY | CONCEPTUAL DESIGN | MAY 5, 2016

ARKANSAS ARTS ACADEMY
PARENT SURVEY
2015-16

Section 1: About You

Directions: Please circle or provide the answer that best identifies your relationship with AAA.

1. Who will complete this survey?

Mother/female guardian

Father/male guardian

Other

2. How many of your children attend AAA? _____

3. How many years have your children attended AAA? _____

Section 2: About Your Experiences with the School Environment

Directions: Thinking about your experiences with AAA, how much do you agree or disagree with the following statements? (Please check or X only one box in each row.)

		Strongly Agree	Agree	Disagree	Strongly Disagree
1.	My child's teachers show an interest in student learning.				
2.	My child's teachers encourage him/her to think independently and provide him/her with the opportunity to express opinions in the classroom.				
3.	My child expresses confidence in his/her abilities to solve problems and complete tasks assigned by the school.				
4.	In my child's school, teachers treat students fairly.				
5.	In my child's school, there are clear expectations for student behavior.				
6.	Students in my child's school are respectful and students have learned ways to resolve disagreements in a mature and kind manner.				
7.	In my child's school, student behavior is disruptive and hinders learning in the classroom.				
8.	My child's school encourages parental involvement.				
9.	Teachers in my child's school express enthusiasm in teaching and take pride in the school.				
10.	My child's teachers are reliable and a source of support when I have questions or concerns.				

Please complete reverse side.

Section 3: About Your Experiences with Arts-Integration Curriculum

Directions: Thinking about your experiences with AAA, how much do you agree or disagree with the following statements? (Please check or X only one box in each row.)

		Strongly Agree	Agree	Disagree	Strongly Disagree
1.	My child's school has clear standards of achievement.				
2.	I am satisfied with the content and instructional methods used in my child's classroom.				
3.	In my child's school, students are exposed to various mediums of art, drama, and music.				
4.	In my child's school, students are encouraged to use artistic expression in the classroom.				
5.	My child's school and teachers provide regular and useful information that communicates what projects, assignments, lessons, etc. are used to integrate arts into the curriculum.				
6.	My child's teachers assign projects and assignments that promote an arts-enhanced curriculum.				
7.	My child's school adheres to its philosophy of providing students with a rigorous academic program with a purposed integration of the arts.				
8.	The teachers in my child's school present efforts to effectively integrate the arts into their classrooms.				
9.	My child's teachers provide lessons that promote arts integration on a weekly basis.				
10.	In my child's school, the use of an arts integrated curriculum enhances learning and engages students.				

Thank you for your cooperation in completing this survey. We value your opinion of our school!



ARKANSAS
ARTS ACADEMY

Mary Ley <mley@artsk12.org>

Canopy

Stephen Kesel <stephen@marlonblackwell.com>
To: Mary Ley <mley@artsk12.org>

Thu, May 5, 2016 at 4:48 PM

Mary,

I've talked with Marlon and he's relayed to the contractors that this isn't acceptable. Writing a registered letter to the president/CEO, Leo Anhalt, is perfectly understandable and justified in this situation. You can find SSI's addresses [here](#).

That being said, Ryan Bennet is the co-owner and in charge of the Northwest Arkansas region, and he is familiar with Marlon Blackwell Architects, as well as the project. Marlon has reached out to him about your frustrations, and he seems to be pretty receptive of all the complaints. I'm unsure about if he has reached out to you personally, but I know that he has been to the site to survey the progress. I think that he would be a great person to talk to, as he is the person in charge for this project. He is also responsible for the contractors on site, whom I've heard some negative feedback about.

In the meantime, you should be receiving a schedule that will have all the remaining dates until completion. Please let me know if you haven't received this, as this was promised by Ryan Bennet when talking to Marlon.

I hope this helps, let us know if there is anything else we can do.

Stephen Kesel

Marlon Blackwell Architects

From: Mary Ley [mailto:mley@artsk12.org]
Sent: Tuesday, May 3, 2016 3:55 PM
To: Stephen Kesel <stephen@marlonblackwell.com>

Go Into The Light

Laughter lifts APT drama out of dark places

BECCA MARTIN-BROWN

NWA Democrat-Gazette

"We all say we love someone... Words are the bridge we build across the void that separates us... desperate to cling to something, 'I love you' is the best we've come up with for pretending it isn't here."

— "Mothers and Sons"

Brenda Nemec and Ed McClure might seem to be talking about two different plays.

McClure, the director, sees the humor in "Mothers and Sons," just as he sees the humor in pretty much every situation.

"It's hilarious," he says of the Terrence McNally script, which opened on Broadway in 2014 and was nominated for a Tony Award for Best Play. "You're going to laugh all the way through."

Nemec, who plays Katharine Gerard, the pivotal character, says rehearsals have been so intense that she and her castmate — and longtime friend — Joey Farmer are no longer buddies. They've agreed to resume their friendship when the show is over.

"This role has been difficult," she admits. "I don't understand Katharine. How she can be so uninformed, so in the dark, so unloving and so unforgiving? How can she still be that cold? I don't know people like that!"

"I will be honest, this is probably a script more like TheatreSquared would do than what a community theater would do," McClure says of the Arkansas Public Theatre production opening tonight. "It deals with issues that are uncomfortable for some people, I suppose. But it's exceedingly timely, given some of our presidential candidates care more about bathrooms than real issues in the world."

"Mothers and Sons" revolves around Katharine and her relationship with her son, Andre, who died of AIDS in the 1990s.

"She never accepted him as a gay



PHOTO COURTESY LORI COLLIER

Bitter, cold and angry Katharine Gerard (played by Brenda Nemec) finds herself softening when she meets Bud (Gregory Mack), the child of her son's ex-partner (Joseph K. Farmer, standing) and his new spouse (Nicholas Jordan) in the Arkansas Public Theatre production of "Mothers and Sons."

man," Nemec takes up the story. "She shows up on the doorstep of his lover, played by Joey, still angry, still bitter, still cold and unaccepting, only to find out that he's remarried and they've adopted a child. The little boy is the glue that brings everybody together."

"I grew up believing in equal rights," says Gregory Mack, an eighth-grader at the Arkansas Arts Academy who plays Bud, Will and Cal's child. "The family in the play is just like any other with their own problems but a very tight bond. It does a very good

job in showing that there is nothing wrong with being gay, and people should be treated equally. Times have changed, and our generation is more accepting."

"The great thing about getting a 13-year-old is he has a breadth of knowledge to the point where you don't have to explain to him," McClure says. "An 8-year-old would probably not understand. And this kid is talented!"

"This is my first time performing outside of school, yet the experience was not overwhelming because the

FAQ

'Mothers and Sons'

WHEN — 8 p.m. today & Saturday, 2 p.m. Sunday; again May 12-15

WHERE — Arkansas Public Theatre in Rogers

COST — \$10-\$30

INFO — 631-8988

production was planned well and ran smoothly," Gregory says. "The whole group made me feel as a part of a team and supported me all the way through. My director and cast even came to see me perform in a show at my school. I learned a lot about professional theater and hope to do something like this again in the near future."

Nemec says Bud is the linchpin of the whole story. In him, Katharine sees something of her son, even though the two had never even met.

"She does redeem herself in the end because the little boy loves her."

"To me the great story is if you don't find a happy place to love and to accept, you're going to grow old and be mean and bitter. You've got to find that place in your life," Nemec says.

"The critics seemed to love the fact that the Broadway production allowed the humor to come through and did not demonize this woman Brenda is playing," McClure adds. "The production treated her with the same tolerance she was not showing. I always think it's funny when well-meaning liberals are intolerant of intolerance. So in this script, we have some well-meaning liberals who are tolerant of her intolerance."

"Any time you're remembering somebody who is gone, you have good memories and sad memories, but how we deal with that loss and soldier on is what I think is very redeeming about the script."

WHAT'S UP!

FRIDAY, MAY 6, 2016

Valley View High School

LOGAN CARLILE JOHNSON

Crowley's Ridge Academy

JAMES MARK LEWIS

Ridgefield Christian School

GRACE TEDDER

Jonesboro High School

ZACHARY DALE WHITE

Valley View High School

LEAD HILL

BAILEY RIGGS

Bergman High School

LITTLE ROCK

WILLIAM CHARLSON BAKER

Episcopal Collegiate School

BRIDGET BETTS

Mount St. Mary Academy

BREEANN KAYLEE BOWMAN

Joe T. Robinson High School

ERICA A. BRASWELL

Hall High School

TJ HAMMONDS

Joe T. Robinson High School

ERICA PATRICE KELLY

Parkview Arts and Science Magnet High School

KELVIN JACKSON

J.A. Fair High School

COOPER LAIR

Little Rock Christian Academy

MONROE MCKAY

Little Rock Catholic High School for Boys

AKHIL MADDUKURI

Pulaski Academy

ADRIANNE OWINGS

Episcopal Collegiate School

ELIZABETH GRACE SCOTT

Pulaski Academy

DEJAH TAYLOR

J.A. Fair High School

ASHLYN UNDERWOOD

Little Rock Christian Academy

ANGELA WANG

Little Rock Central High

DAVID XIANG

Little Rock Central High

WILLIAM YANG

Arkansas School for Mathematics, Sciences and the Arts

KEVIN YUEN

Parkview Arts and Science Magnet High School

LOWELL

JOSHUA JORDAN VAN SICKLER

Rogers New Technology High School

MABELVALE

JORDAN JACKSON

eStem Public Charter High School

MANILA

JESSICA WEISS

Gosnell High School

MAUMELLE

LYNLEY CHILDRESS

Central Arkansas Christian

CHRISTOPHER DAVIS

Maumelle High School

SLATON WOOD

Maumelle Charter High School

MT. PLEASANT

MARY ELIZABETH JOHNSON

Melbourne High School

NORTH LITTLE ROCK

DANIEL ADAMS

North Little Rock High School

DA'VIONA SIMS

North Little Rock High School

PARAGOULD

CLAIRE ALYCE BROWN

Paragould High School

ALLIE MARTIN

Brookland High School

JOHN THOMAS WOLZ

Paragould High School

PRAIRIE GROVE

DARIEN CHEATHAM

Lincoln High School

ROY MCKENZIE

Prairie Grove High School

BLAYKE ALLISON ROGERS

Farmington High School

JORDAN STITES

Lincoln High School

RAVENDEN SPRINGS

SHAWNA ROSS

Maynard High School

RISON

MAKAYA D. BANKS

Rison High School

SETH AARON CROUSE

Rison High School

CALIE MADISON MORRISON

Woodlawn High School

AUSTIN SLATER

Woodlawn High School

ROGERS

ANGELES AGUILERA

Rogers New Technology High School

BENJAMIN OLIVIER

AITOUMEZIANE

Rogers Heritage High School

KATHRYN ANNE POWELL

Rogers Heritage High School

ALYSSA TURNER

Arkansas Arts Academy

RUSSELLVILLE

JAMISON E. HALE

Pottsville High School

JOSIAH PROCK

Pottsville High School

SEARCY

ALLY DAVIS

Harding Academy

JACK FREELAND

Searcy High School

LEXIE HARALSON

Searcy High School

SHERIDAN

SARAH HANDLOSER

Sheridan High School

SHERRILL

ZACHARY MONTGOMERY

England High School

SHERWOOD

ASHLIE LEONARD

Sylvan Hills High School

NATALIE SONTAG

eStem Public Charter High School

TEMUULEN ZOLBAYAR

Sylvan Hills High School

SILOAM SPRINGS

SAVANNAH JOHNNANN CARTER

Siloam Springs High School