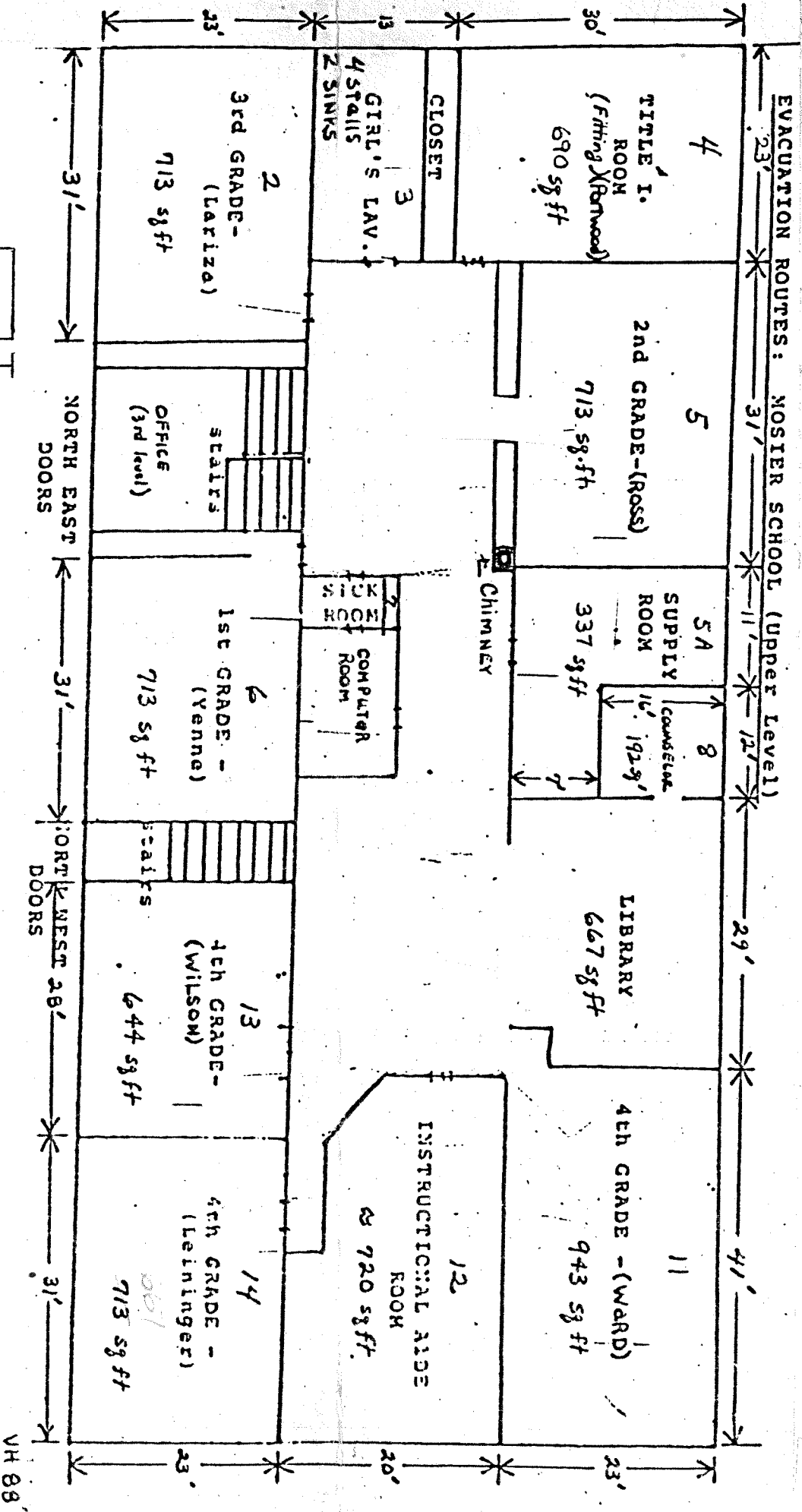
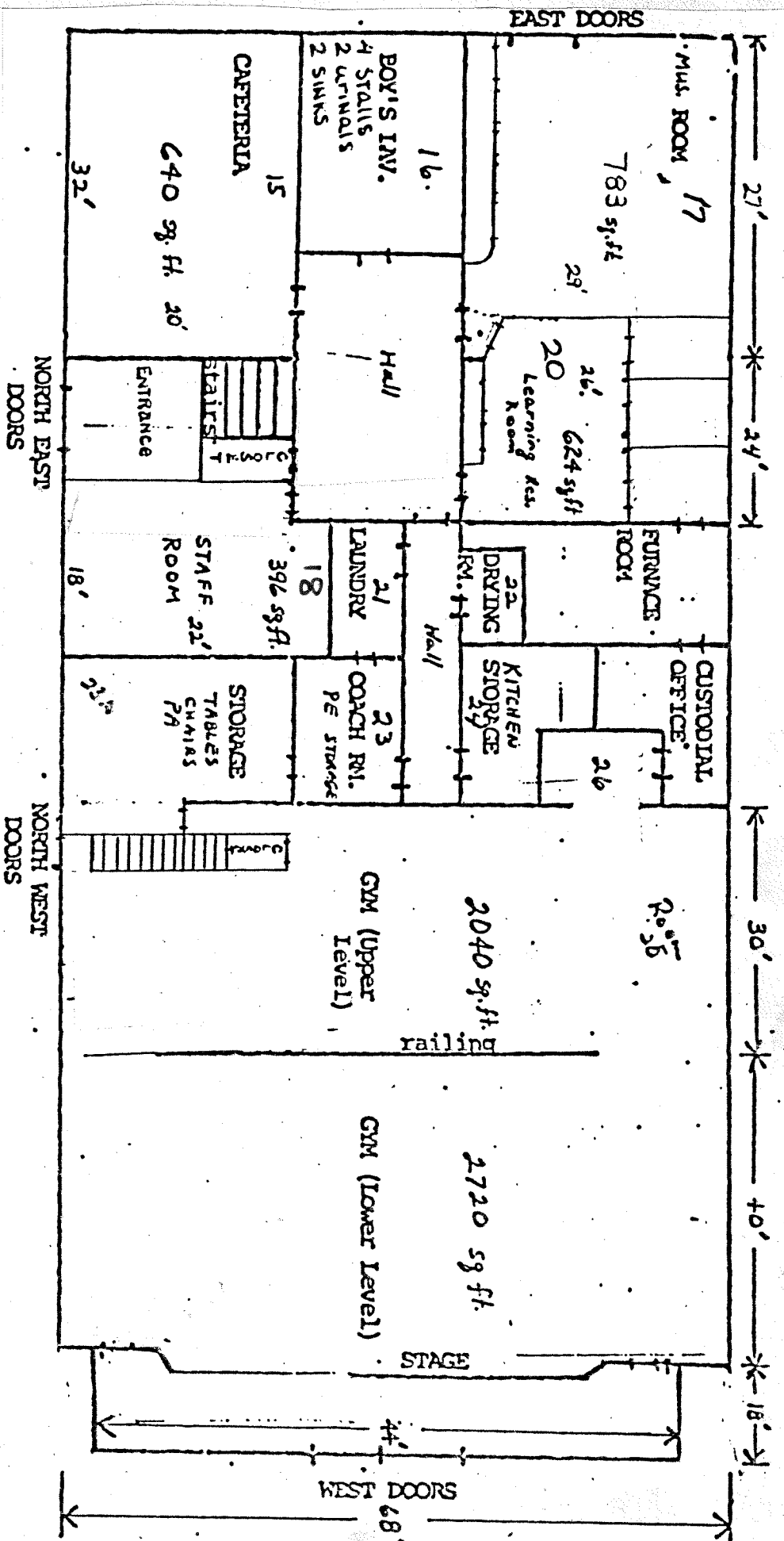


EVACUATION ROUTES: MOSIER SCHOOL (Lower Level)



RM#	Description	Area (sq. ft.)	Notes
1	Office	272	
2	Class Rm	713	
4	Class Rm	690	
5	Class Rm	713	
6	Class Rm	713	
8	Counselor	192	
11	Class Rm	943	
12	Class Rm	~720	
13	Class Rm	644	
14	Class Rm	713	
15	Cafeteria	640	Main Bldg. 148 x 68 x 2 = 20128
17	Class Rm	783	Stage 19 x 48 = 912
20	Class Rm	624	Kindergarten 50 x 31 = 1550
27	Class Rm	890	Bus Garage 24 x 40 = 960
Total		23550	

Mosier Elem. School
11/3/88 Hendricks

VH 88