



**July 19, 2023**

Project Timeline Recap

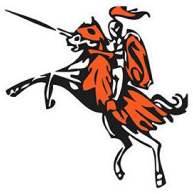
Should we consolidate our Elementary Schools?

What is the Preferred Design Option?

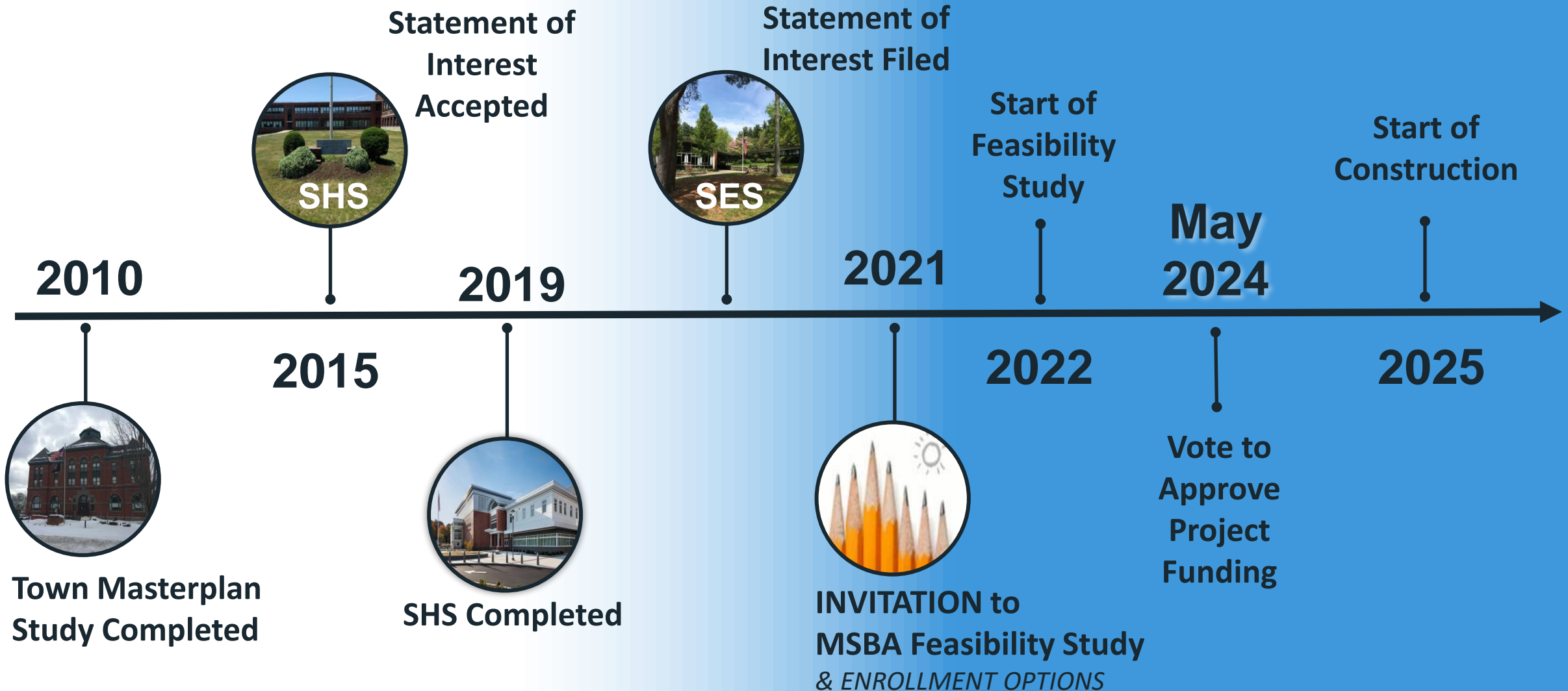
Looking Ahead...

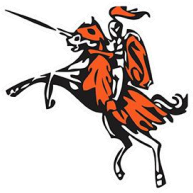
Communication & Outreach

The New Elementary School | [stoughton.ma](https://stoughton.ma)  
**Community Forum**



# Project Timeline





# The New Elementary School Project

## timeline



### School Building Committee

*SBC Goal: select preferred design option*

### School Committee

*SC Goal: Determine 5 or 4 schools with redistricting*

★ 5/23/2023

- Educational impacts – consolidation
- Social / emotional impacts – consolidation
- Operational Impacts - consolidation

★ 6/13/2023

- Updated Ed Plan
- Preliminary cost information
- Preliminary Plan for Wilkins
- Considerations in redistricting
- Preliminary Evaluation of options

★ 6/27/2023

★ July 26

- SC to VOTE Preferred Option

★ *Meetings held at District Office*

**Submit To MSBA 8/31/23**



<https://www.stoughtonschools.org>



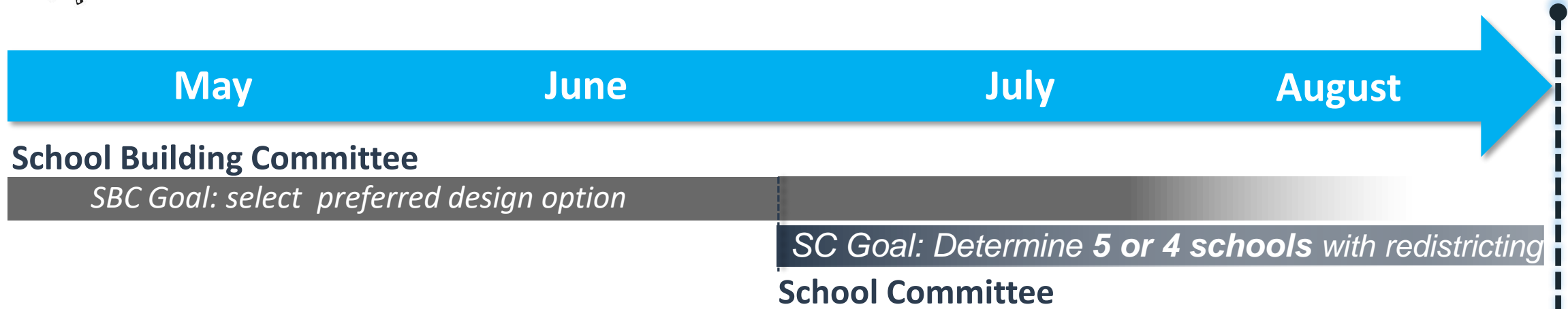
Massachusetts School Building Authority  
*Funding Affordable, Sustainable, and Efficient Schools in Partnership with Local Communities*



DRA



# The New Elementary School Project



## design team timeline

- Community Forums and Present Options
- Ongoing Survey
- Coordinate Options Requirements – PDP Estimates
- Prepare PDP Report

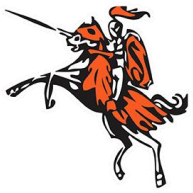
- Submitted PDP to MSBA
- Updated Options to match Revised Educational Plan
- Ongoing Survey Work
- Ongoing Traffic Study

- Preliminary cost information
- Preliminary Plan for Wilkins
- Considerations in redistricting
- Preliminary Evaluation of options
- **Meetings with Town Departments**
- **PSR Cost Estimation Period Starts**
- **Community Forum**

- **Geotech Exploration**
- **Refine Cost Estimates**
- **Meetings with Town Departments**
- **Prepare submission**

**Submit To MSBA 8/31/23**





# The New Elementary School Project



**Should Stoughton pursue a  
225 or 515 Enrollment  
Elementary School Project?**

*School Committee to Decide*



**Suggestions?**

Check out the website!

Email us at  
[NewElementarySchool@stoughtonschools.org](mailto:NewElementarySchool@stoughtonschools.org)

**Sugestões?**

Confira o site!

Envie-nos um e-mail para  
[NewElementarySchool@stoughtonschools.org](mailto:NewElementarySchool@stoughtonschools.org)

<https://www.stoughtonschools.org>

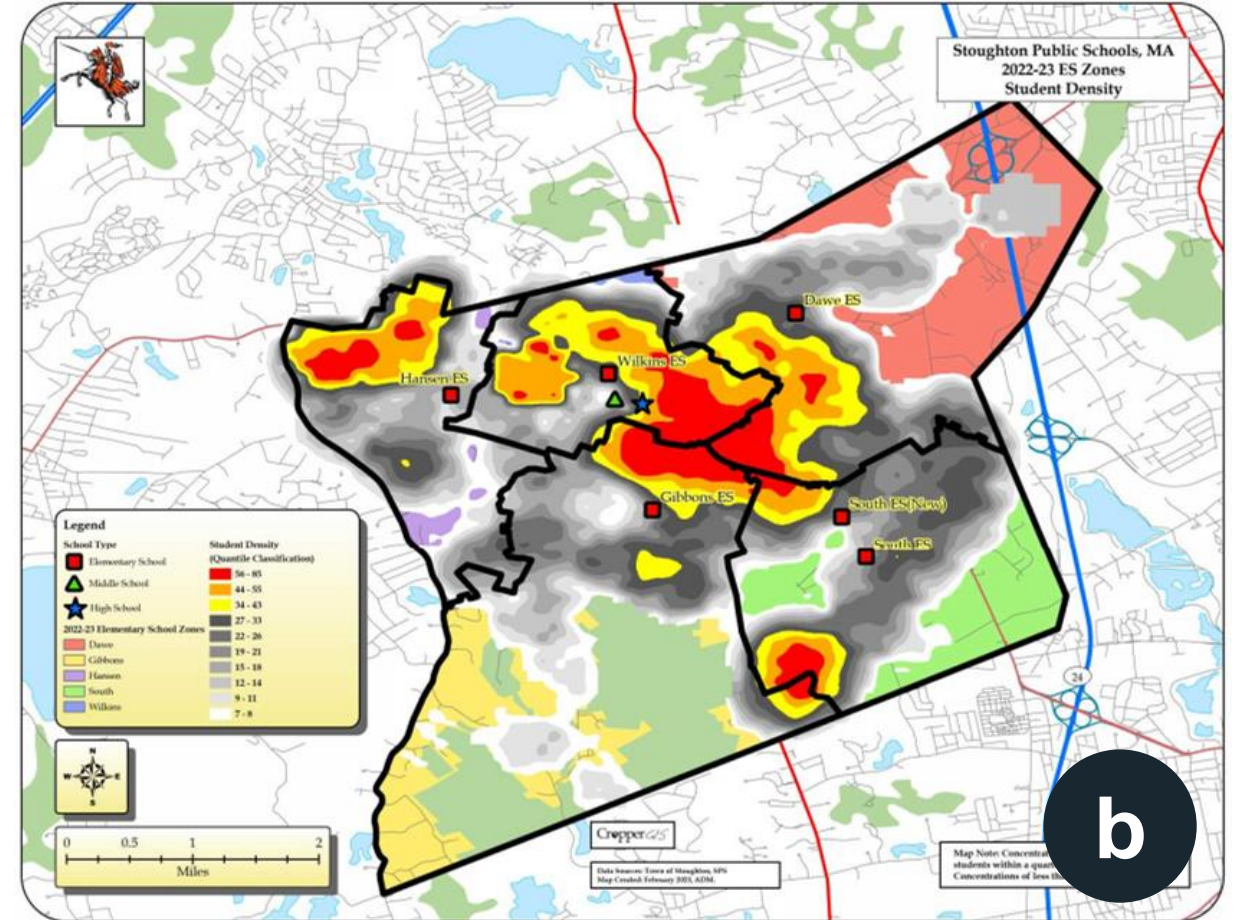
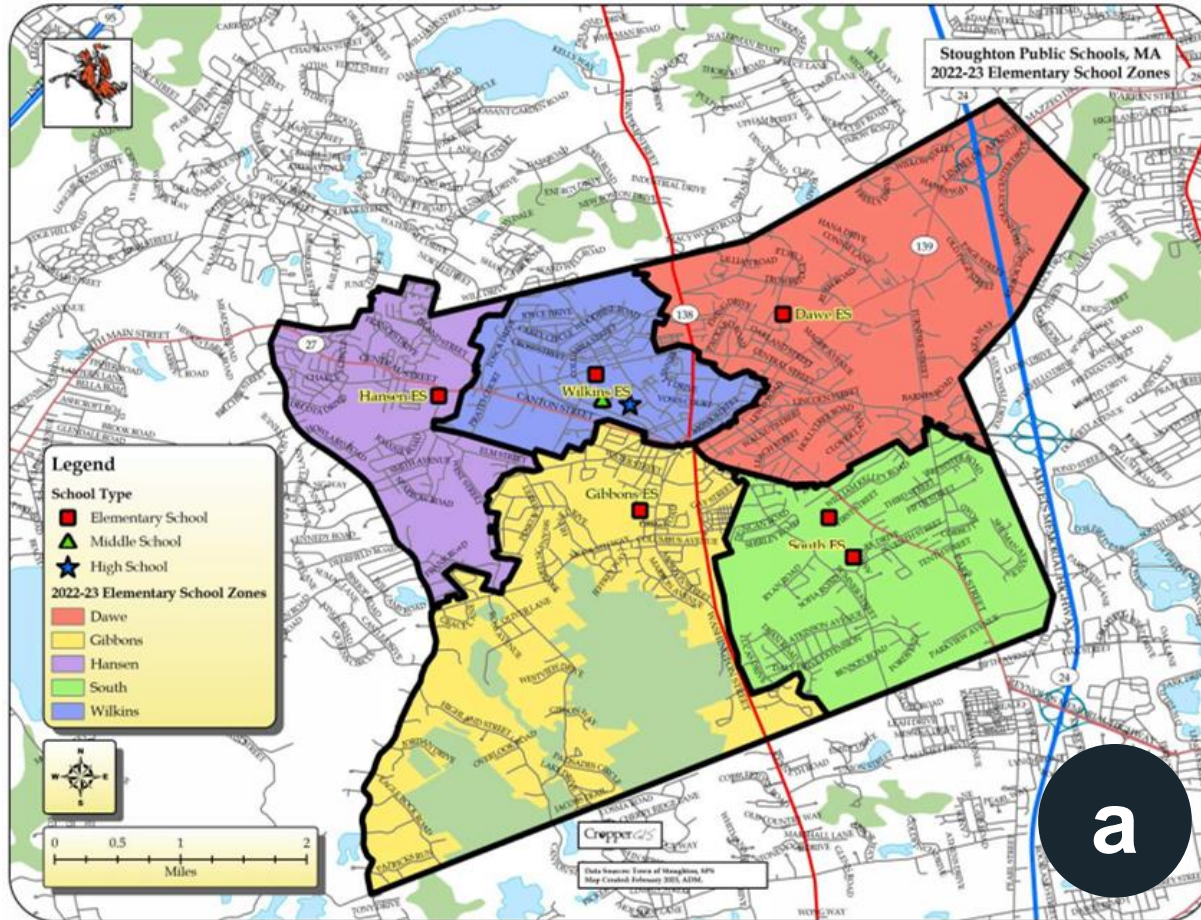
**VERTEX**<sup>®</sup>

DRA



# The New Elementary School Project

## Should Stoughton Consolidate & Re-District their Elementary Schools?





# 225 Student Enrollment PROS & CONS

## PROS

- ✓ Lower initial construction cost
- ✓ Minimize Impact to Redistricting
- ✓ Retain existing Neighborhood School size

## CONS

- Higher long-term cost to the Town
- Higher Construction Cost per Student
- Does not improve resource management across the District



# 515 Student Enrollment PROS & CONS

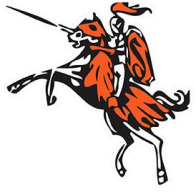
## PROS

- ✓ Maximize state reimbursement for Stoughton residents
- ✓ A larger school is more energy efficient & flexible
- ✓ More elementary students benefit from the new larger school
- ✓ Rebalance students to reduce pockets of overcrowding
- ✓ Ongoing Improvements at Dawe, Gibbons, & Hansen
- ✓ Reduce overall District costs in the long run
- ✓ New School can provide Community-wide amenities & program spaces

## CONS

- Higher Initial Cost to the Town
- A greater number of students will transition during their elementary school career
- Does not retain existing Neighborhood School





# If 515 Enrollment is determined by SC...

NEW  
ELEMENTARY  
SCHOOL

SOUTH  
ELEMENTARY  
SCHOOL

WILKINS  
ELEMENTARY  
SCHOOL

JONES EARLY  
CHILDHOOD  
CENTER

Occupied  
Summer-  
Fall 2027

Available  
Summer-  
Fall 2027

Future School  
Committee to Study  
Available Summer 2027  
for  
Preschool Program

Future School  
Committee Vote  
Required  
Available Summer 2027  
for rental space

# OPTIONS | overview

Base Repair

AR  
1

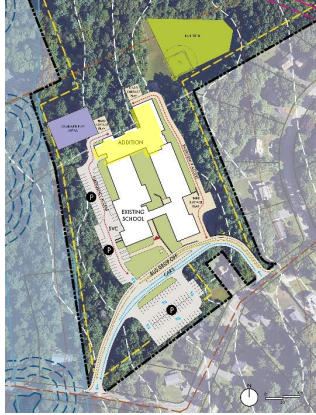
AR  
2

NC  
1 – 1A

NC  
2 – 2A

NC  
3 – 3A

NC  
4 – 4A



Base Repair  
Site Area:  
7 acres

**REPLACEMENT**  
Project Area:  
12 acres

CONSOLIDATION  
Project Area:  
12 acres

REPLACEMENT & CONSOLIDATION  
Project Area: 27 acres

CONSOLIDATION  
Project Area:  
12 acres

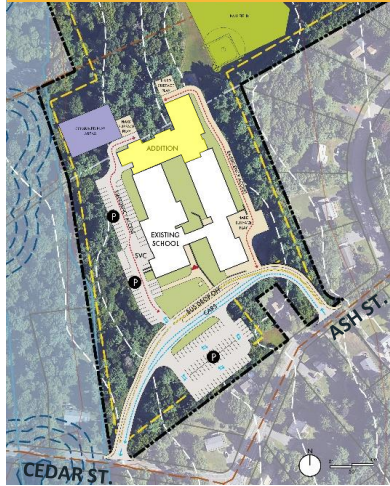
add/  
reno

new  
construction

# OPTIONS | refinement

site plans

**REPLACEMENT**  
Project Area:  
12 acres



**REPLACEMENT & CONSOLIDATION** (both enrollments)  
Project Area: 27 acres

NC 1 – 1A



'the pinwheel'

NC 2 – 2A



'the arc'

NC 3 – 3A



'the tee'

Addition - Renovation

New Construction: Line Lumber Site

225 enrollment  
\$55-60 M

225 enrollment  
\$65-70 M  
515 enrollment  
\$85-90 M

225 enrollment  
\$65-70 M  
515 enrollment  
\$85-90 M

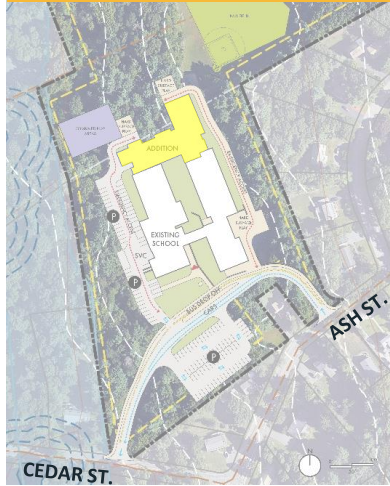
225 enrollment  
\$65-70 M  
515 enrollment  
\$85-90 M

construction cost

# OPTIONS | refinement

site plans

**REPLACEMENT**  
Project Area:  
12 acres



**REPLACEMENT & CONSOLIDATION** (both enrollments)  
Project Area: 27 acres

NC 1 – 1A

NC 2 – 2A

NC 3 – 3A



'the pinwheel'

'the arc'

'the tee'

Addition - Renovation

New Construction: Line Lumber Site

construction  
cost

225 enrollment

\$65-70 M

515 enrollment

\$85-90 M

# PREFERRED OPTION | pinwheel



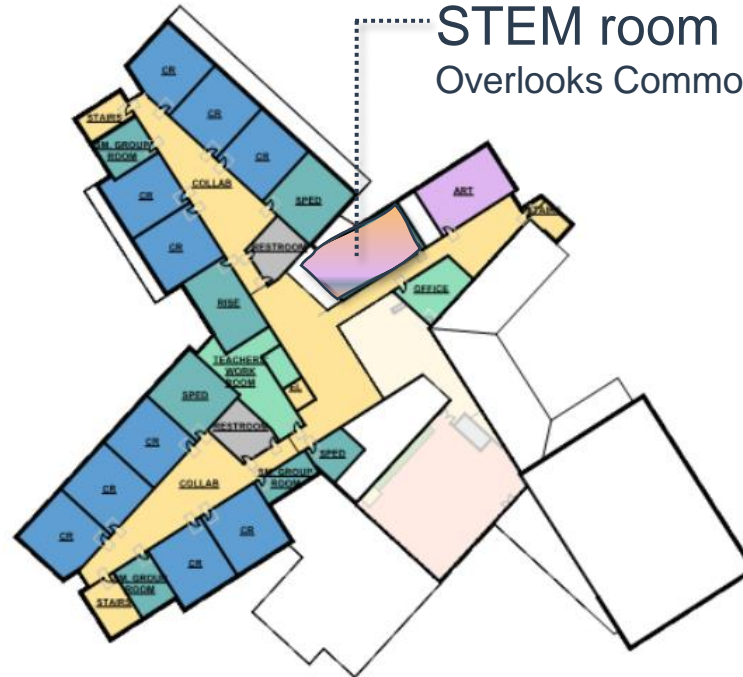
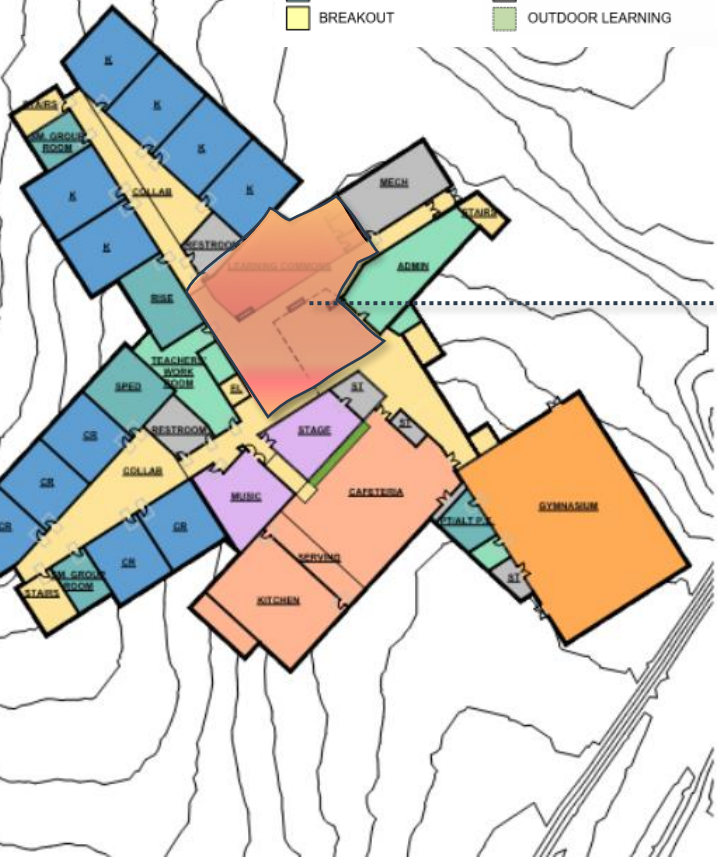
NC  
1 - 1A

LINE LUMBER SITE

- LIBRARY / MEDIA
- GYMNASIUM
- CLASSROOMS
- SPECIAL EDUCATION
- BREAKOUT
- SPECIALS (Art/Music/STEM)
- ADMIN/TEACHER SUPPORT
- CAFETERIA & KITCHEN
- CUST / IT / MAINT
- OUTDOOR LEARNING

learning commons  
Heart of the School

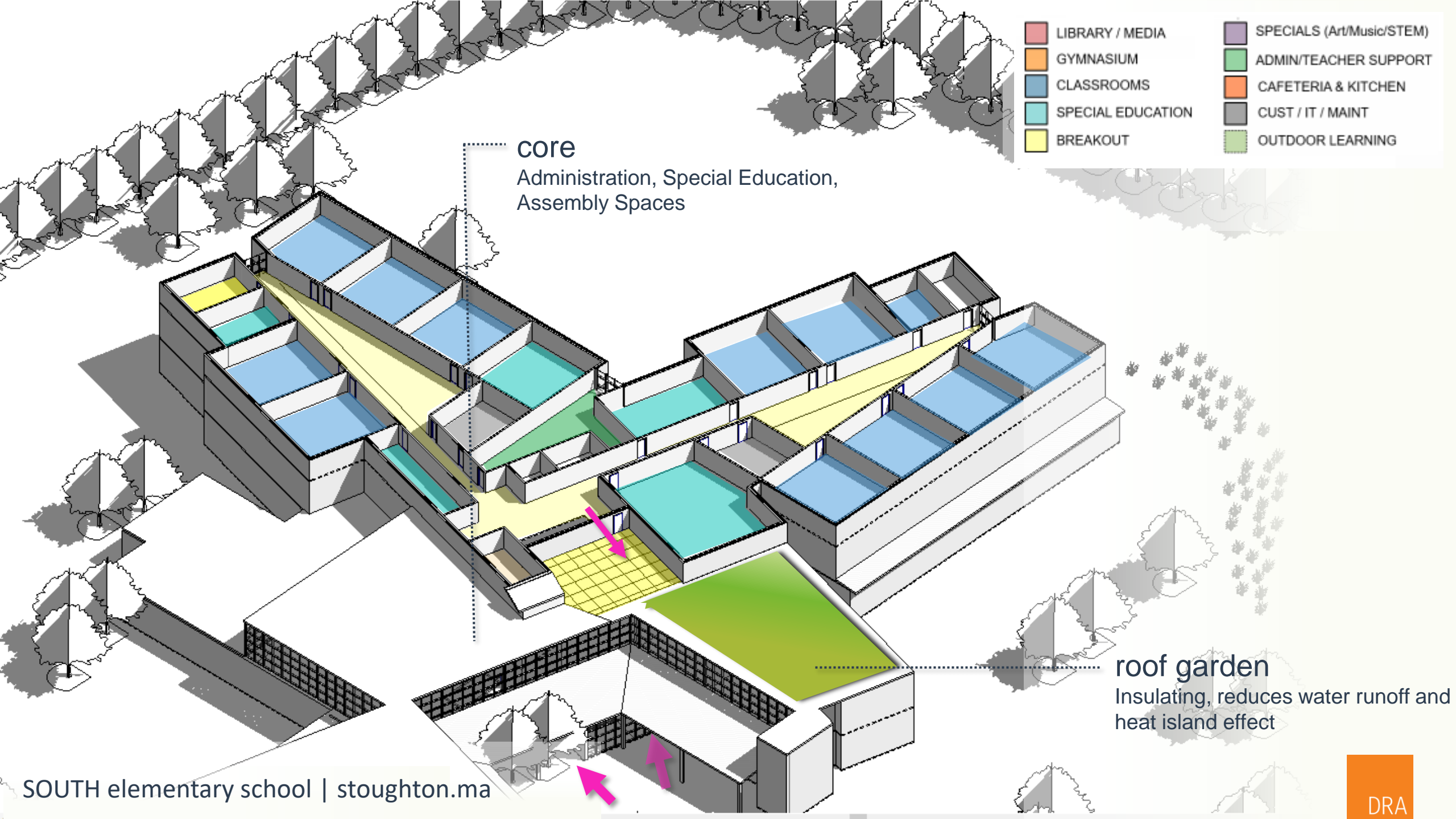
STEM room  
Overlooks Commons



1 first floor plan

2 second floor plan

3 third floor plan



- LIBRARY / MEDIA
- GYMNASIUM
- CLASSROOMS
- SPECIAL EDUCATION
- BREAKOUT
- SPECIALS (Art/Music/STEM)
- ADMIN/TEACHER SUPPORT
- CAFETERIA & KITCHEN
- CUST / IT / MAINT
- OUTDOOR LEARNING

**core**  
Administration, Special Education,  
Assembly Spaces

**roof garden**  
Insulating, reduces water runoff and  
heat island effect

# design patterns | new school

learning commons : heart of the school





# design patterns

small group and breakout spaces

anne t. dunphy elementary school | williamsburg.ct



penn brook | georgetown.ma





# design patterns

history and storytelling

signage  
wall color  
floor patterns  
window transparency & mullion patterns  
ceiling treatment

*2<sup>nd</sup> grader approved*

# design patterns

history and storytelling



future  
development

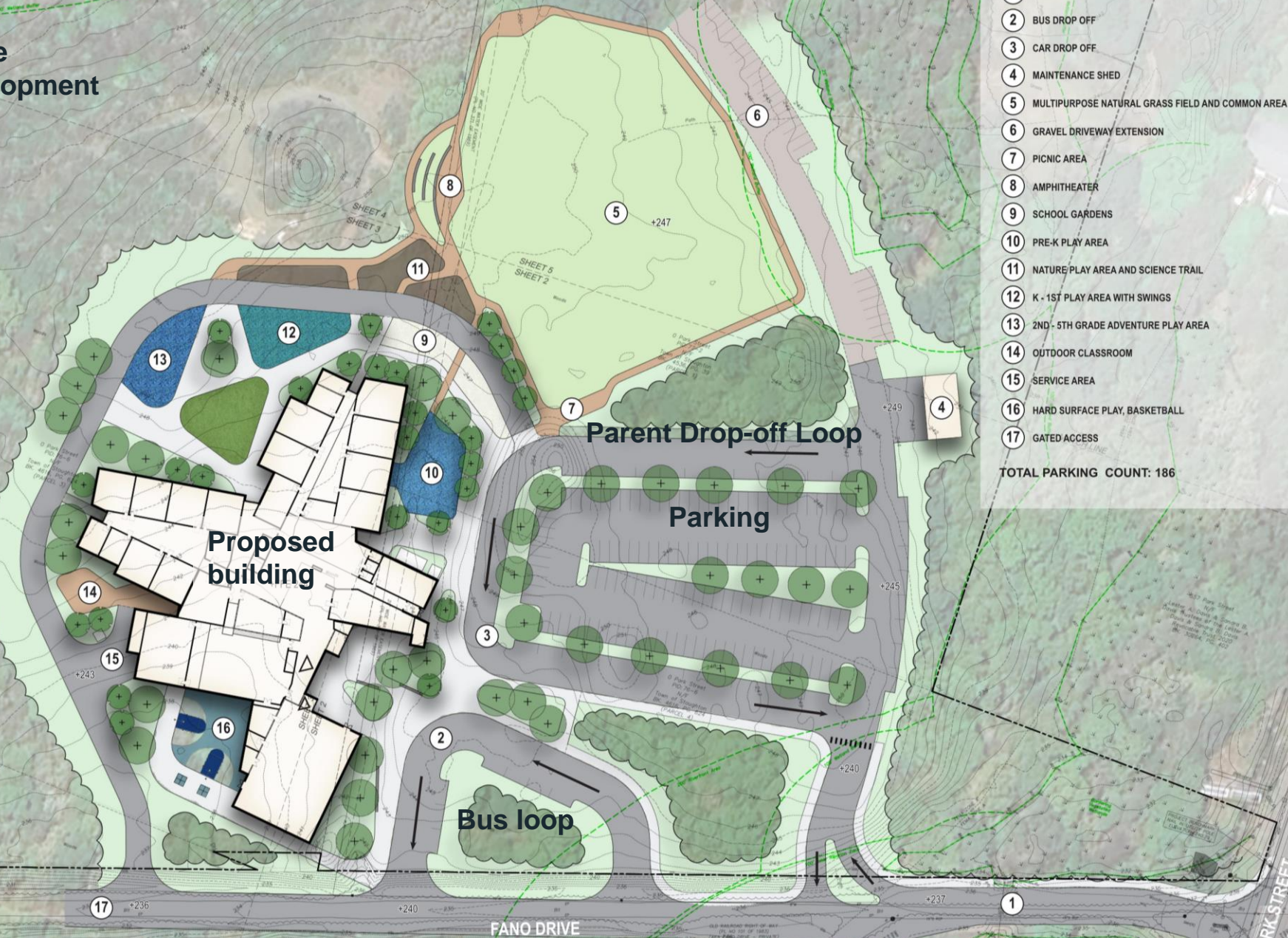
NC

1 - 1A

LINE LUMBER SITE

the pinwheel

- LEGEND**
- 1 FANO DRIVE IMPROVEMENTS
  - 2 BUS DROP OFF
  - 3 CAR DROP OFF
  - 4 MAINTENANCE SHED
  - 5 MULTIPURPOSE NATURAL GRASS FIELD AND COMMON AREA
  - 6 GRAVEL DRIVEWAY EXTENSION
  - 7 PICNIC AREA
  - 8 AMPHITHEATER
  - 9 SCHOOL GARDENS
  - 10 PRE-K PLAY AREA
  - 11 NATURE PLAY AREA AND SCIENCE TRAIL
  - 12 K - 1ST PLAY AREA WITH SWINGS
  - 13 2ND - 5TH GRADE ADVENTURE PLAY AREA
  - 14 OUTDOOR CLASSROOM
  - 15 SERVICE AREA
  - 16 HARD SURFACE PLAY, BASKETBALL
  - 17 GATED ACCESS
- TOTAL PARKING COUNT: 186



Parent Drop-off Loop

Parking

Proposed  
building

Bus loop

FANO DRIVE

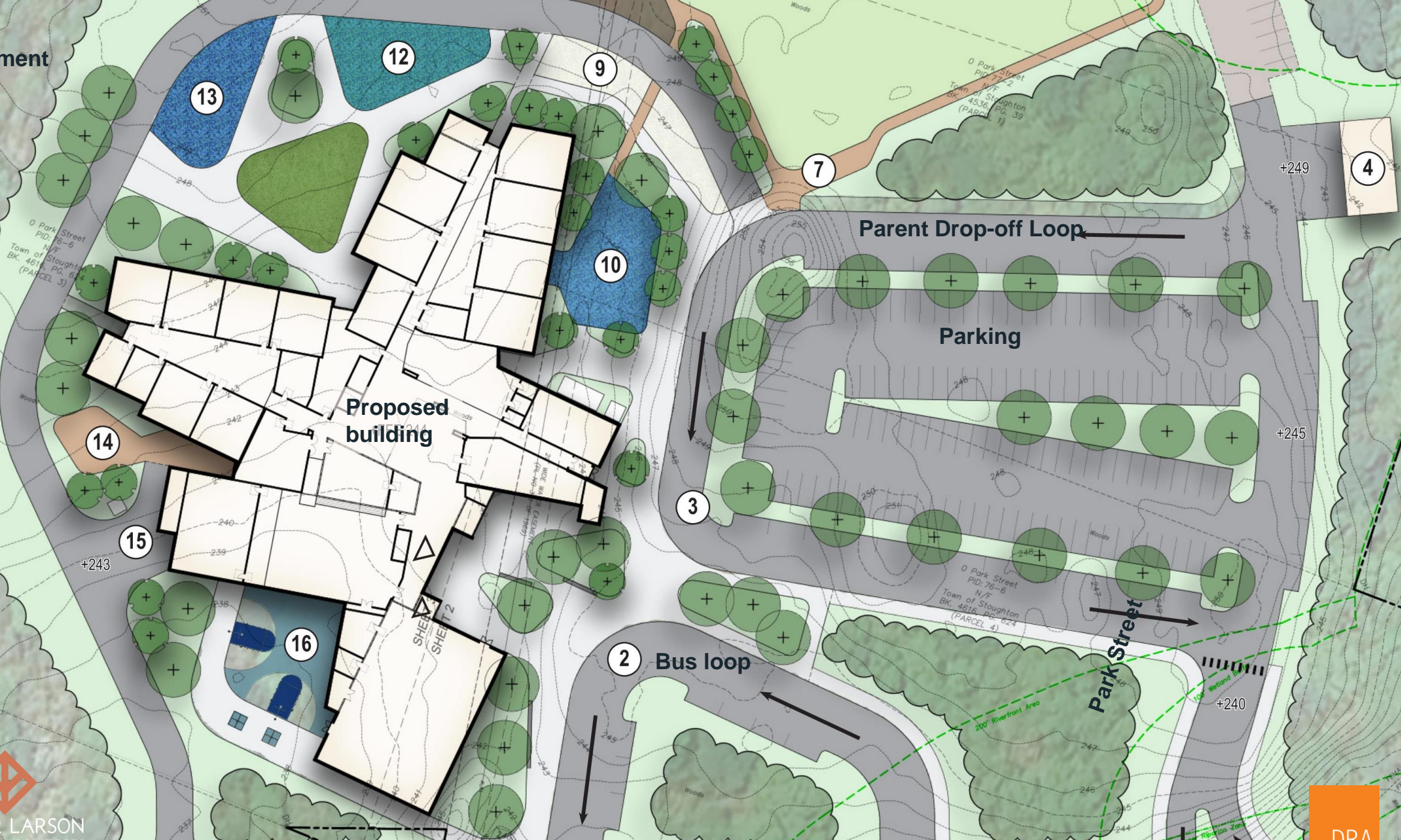
Park Street



WARNER LARSON  
LANDSCAPE ARCHITECTS



future development



NC

1 – 1A

LINE LUMBER SITE

the pinwheel

future  
development

Fano Drive



Proposed  
building

Play Fields

Parking

future  
development

Park Street

# design patterns

inclusive design



# new school



# design patterns | new school

outdoor learning + play



# design patterns | new school

outdoor learning | community focus



Stoughton high school | [stoughton.ma](http://stoughton.ma)

  
WARNER LARSON  
ARCHITECTS

DRA



# design patterns | new school

outdoor learning + play



# PREFERRED OPTION| sustainable solutions



looking ahead....

focus on **wellness**



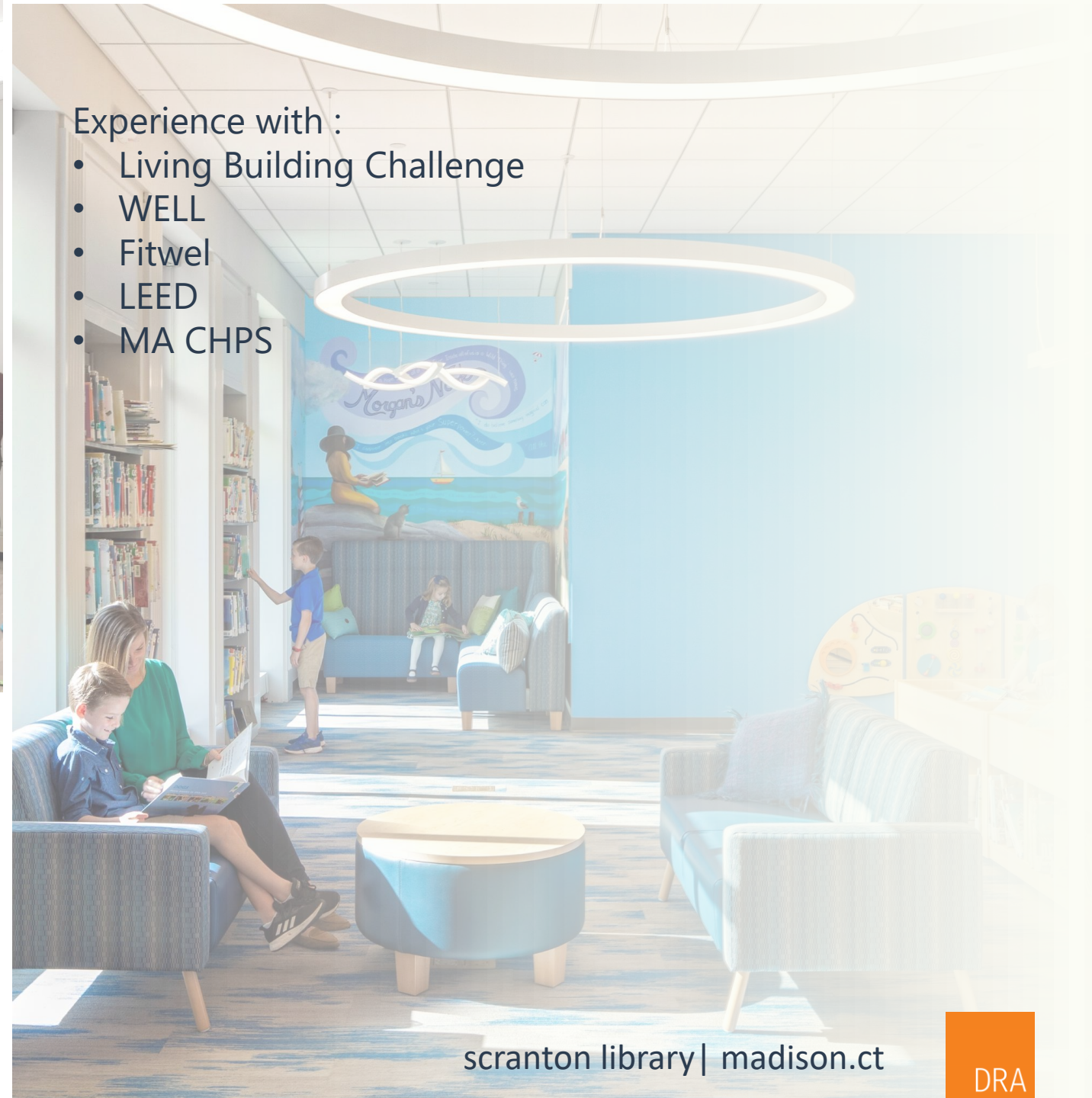
being mindful about  
**material selection**

- indoor air quality
- low emitting – no VOC materials
- cradle to cradle materials
- low carbon offsets
- red list free materials when possible

The New Stoughton Elementary School

Experience with :

- Living Building Challenge
- WELL
- Fitwel
- LEED
- MA CHPS



scranton library | madison.ct

DRA

# the new stoughton elementary school | k-5

## photovoltaics

system reduces overall building demand on local utility company

## student gardens

a cistern collects rainwater from the roof for watering the gardens

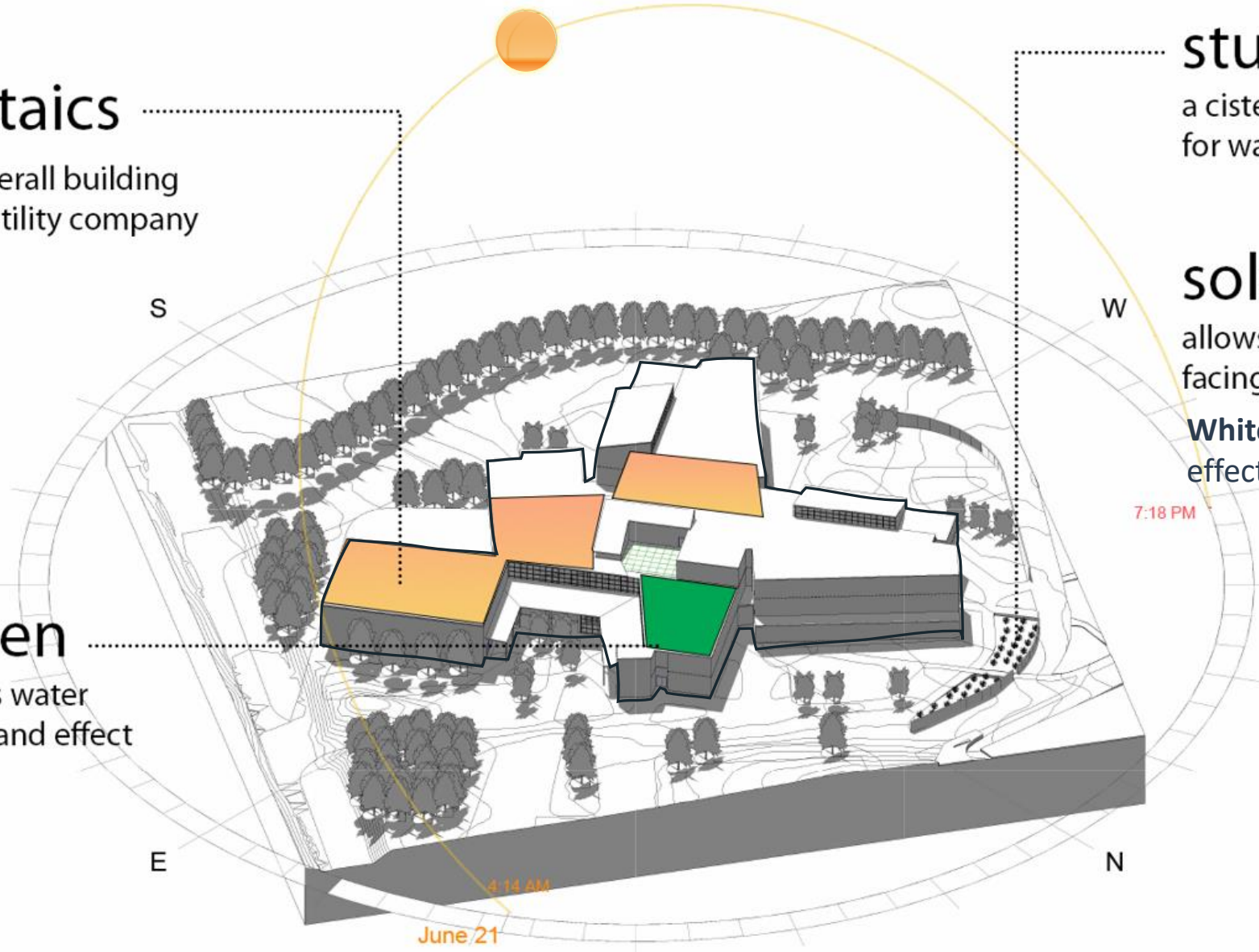
## solar orientation

allows exposure for classroom & pv facing south on the cafeteria roof

**White roof** minimizes heat island effect – minimizing utility bills

## roof garden

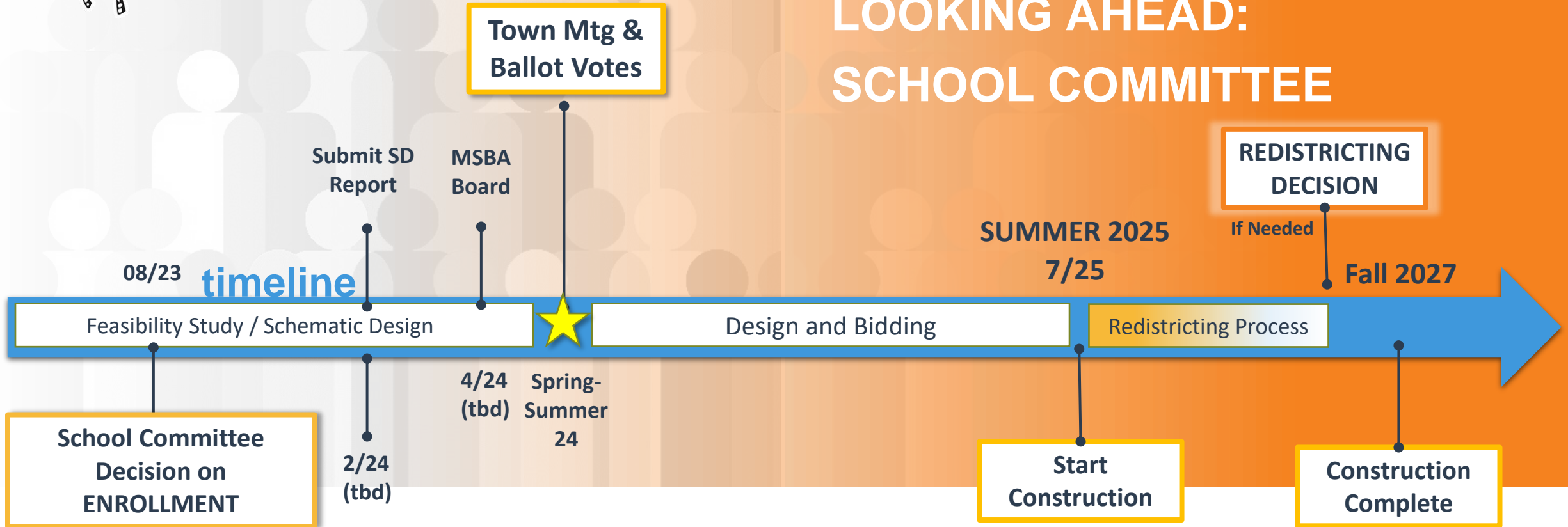
insulating, reduces water runoff and heat island effect





# The New Elementary School Project

## LOOKING AHEAD: SCHOOL COMMITTEE





**THANK YOU!**  
**OBRIGADO!**  
**MèSI!**  
**¡GRACIAS!**

*Questions?* QUESTÕES? KESYON? ¿PREGUNTAS?

The New Elementary School | [stoughton.ma](http://stoughton.ma)  
**Community Forum**

**VERTEX**<sup>®</sup>

DRA