



July 12, 2023

Project Timeline Recap
Review Updates & Options
Preferred Schematic - VOTE
Line Lumber Site Logistics
School Committee Meetings & Update
Communication & Outreach

The New Elementary School | stoughton.ma
Building Committee Meeting



The New Elementary School Project

timeline



School Building Committee

SBC Goal: select preferred design option

School Committee

SC Goal: Determine 5 or 4 schools with redistricting

★ 5/23/2023

★ 6/13/2023

★ 6/27/2023

★ July / August (tbd)

- Educational impacts – consolidation
- Social / emotional impacts – consolidation
- Operational Impacts - consolidation

- Preliminary cost information
- Preliminary Plan for Wilkins
- Considerations in redistricting
- Preliminary Evaluation of options

- **SC to VOTE Preferred Option**

Submit To MSBA 8/31/23

★ *Meetings held at District Office*



<https://www.stoughtonschools.org>



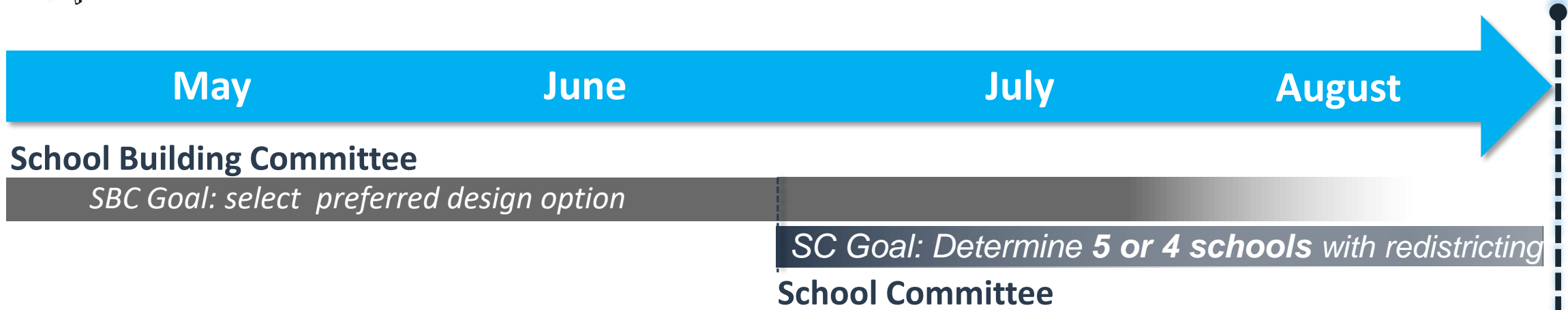
Massachusetts School Building Authority
Funding Affordable, Sustainable, and Efficient Schools in Partnership with Local Communities

VEIRTEX[®]

DRA



The New Elementary School Project



design team timeline

- Community Forums and Present Options
- Ongoing Survey
- Coordinate Options Requirements – PDP Estimates
- Prepare PDP Report

- Submitted PDP to MSBA
- Updated Options to match Revised Educational Plan
- Ongoing Survey Work
- Ongoing Traffic Study

- Preliminary cost information
- Preliminary Plan for Wilkins
- Considerations in redistricting
- Preliminary Evaluation of options
- Meetings with Town Departments
- PSR Cost Estimation Period Starts
- Community Forum

- Geotech Exploration
- Refine Cost Estimates
- Meetings with Town Departments
- Prepare submission

Submit To MSBA 8/31/23



OPTIONS | overview

Base Repair

AR
1

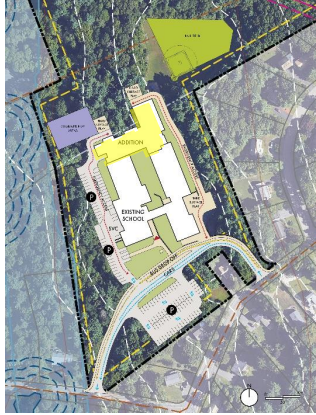
AR
2

NC
1 – 1A

NC
2 – 2A

NC
3 – 3A

NC
4 – 4A



Base Repair
Site Area:
7 acres

REPLACEMENT
Project Area:
12 acres

CONSOLIDATION
Project Area:
12 acres

REPLACEMENT & CONSOLIDATION
Project Area: 27 acres

CONSOLIDATION
Project Area:
12 acres

add/
reno

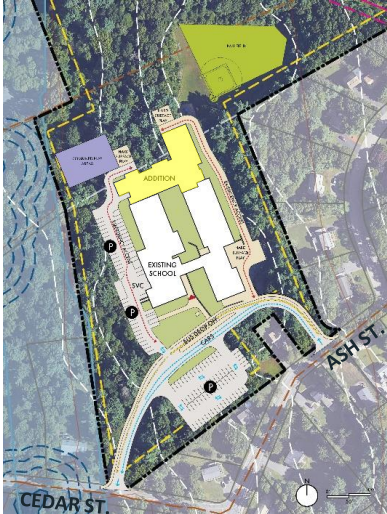
new
construction



The New Elementary School Project

site plans

**REPLACEMENT
Project Area:
12 acres**



**REPLACEMENT & CONSOLIDATION (both enrollments)
Project Area: 27 acres**

NC 1 – 1A



'the pinwheel'

NC 2 – 2A



'the arc'

NC 3 – 3A



'the tee'

construction cost

Addition - Renovation

**225 enrollment
\$55-60 M**

New Construction: Line Lumber Site

**225 enrollment
\$65-70 M
515 enrollment
\$85-90 M**

**225 enrollment
\$65-70 M
515 enrollment
\$85-90 M**

**225 enrollment
\$65-70 M
515 enrollment
\$85-90 M**



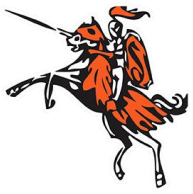
The New Elementary School Project

ED PROGRAM Updates

- RISE Program & Support Space
- PT Adaptive Physical Education Spaces
- Added Curriculum Descriptions

SITE Updates

- Primary Site Access & Emergency Access
- Area for Future Development
- Play Field Revisions
- Future Maintenance Building
- Play area

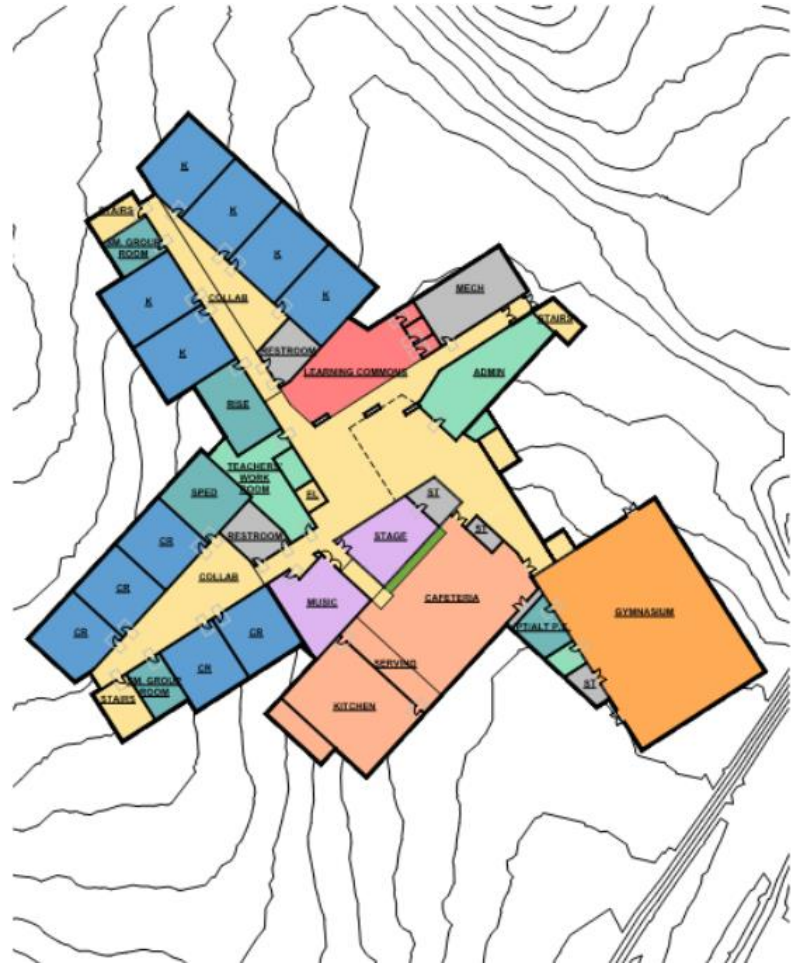


Pinwheel Plan – Revised Layout

NC

1 – 1A

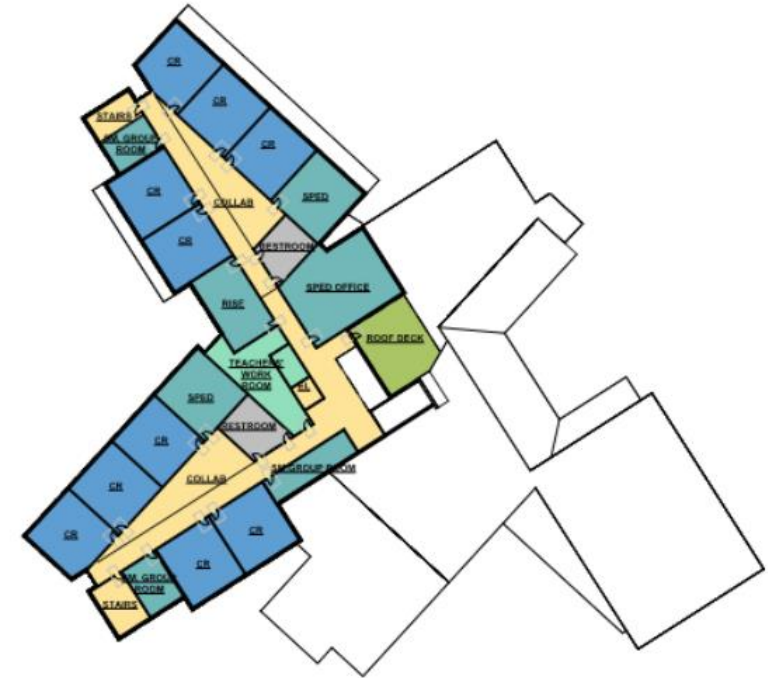
LINE LUMBER SITE



1 first floor plan



2 second floor plan

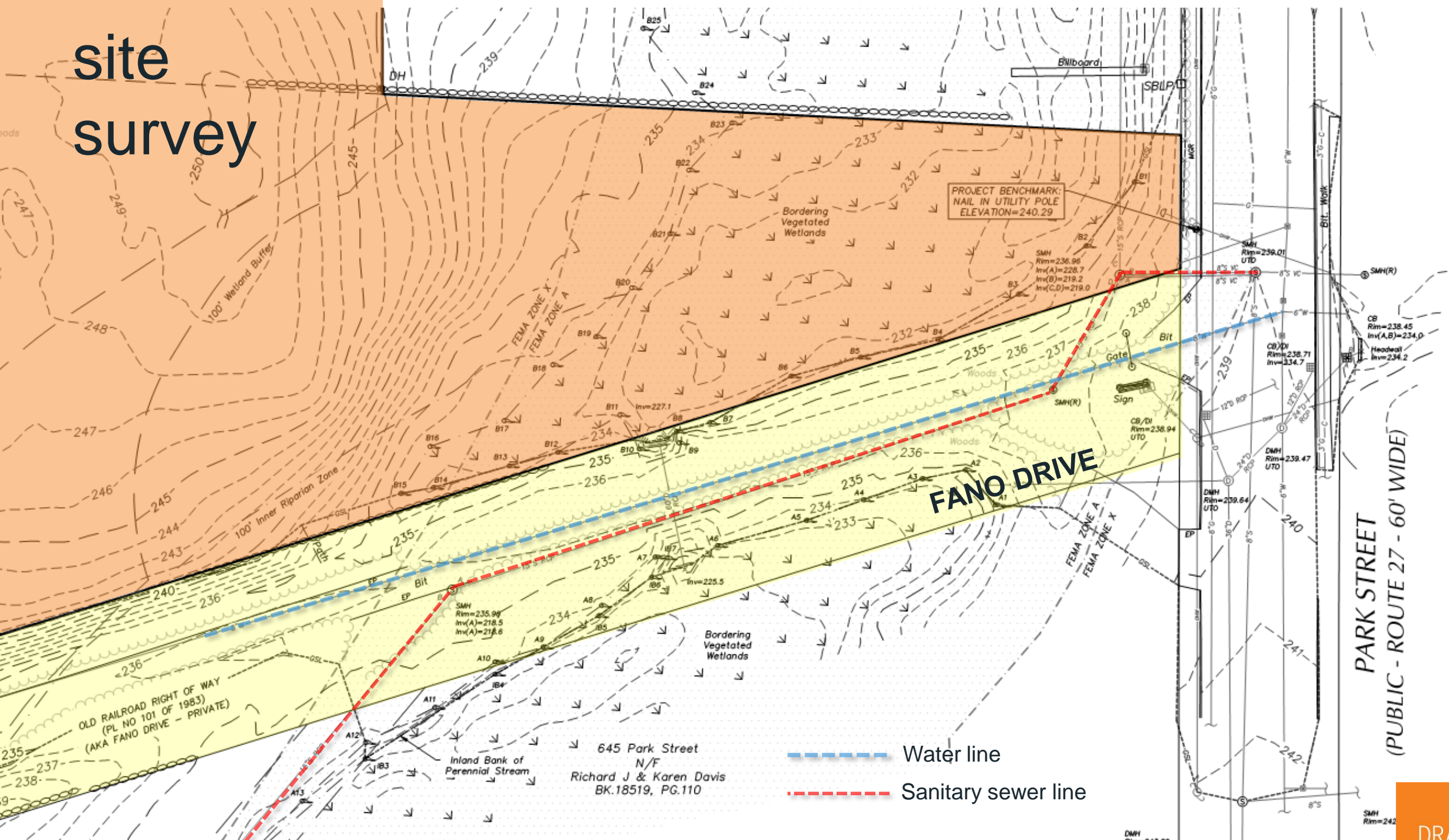


3 third floor plan

site survey



site survey



- Water line
- Sanitary sewer line

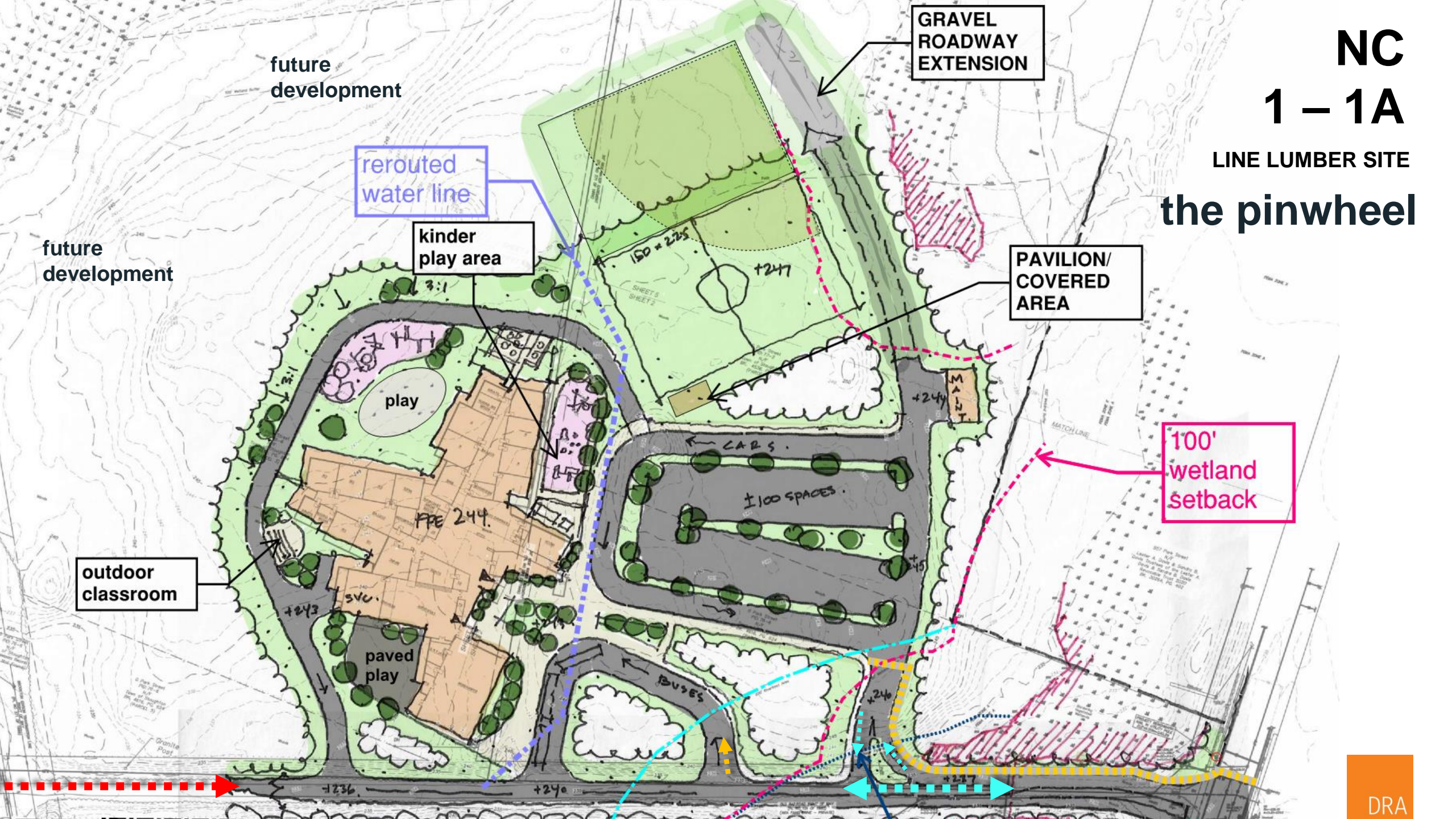
645 Park Street
N/F
Richard J & Karen Davis
BK.18519, PG.110

NC

1 - 1A

LINE LUMBER SITE

the pinwheel



future development

rerouted water line

kinder play area

GRAVEL ROADWAY EXTENSION

PAVILION/COVERED AREA

future development

100' wetland setback

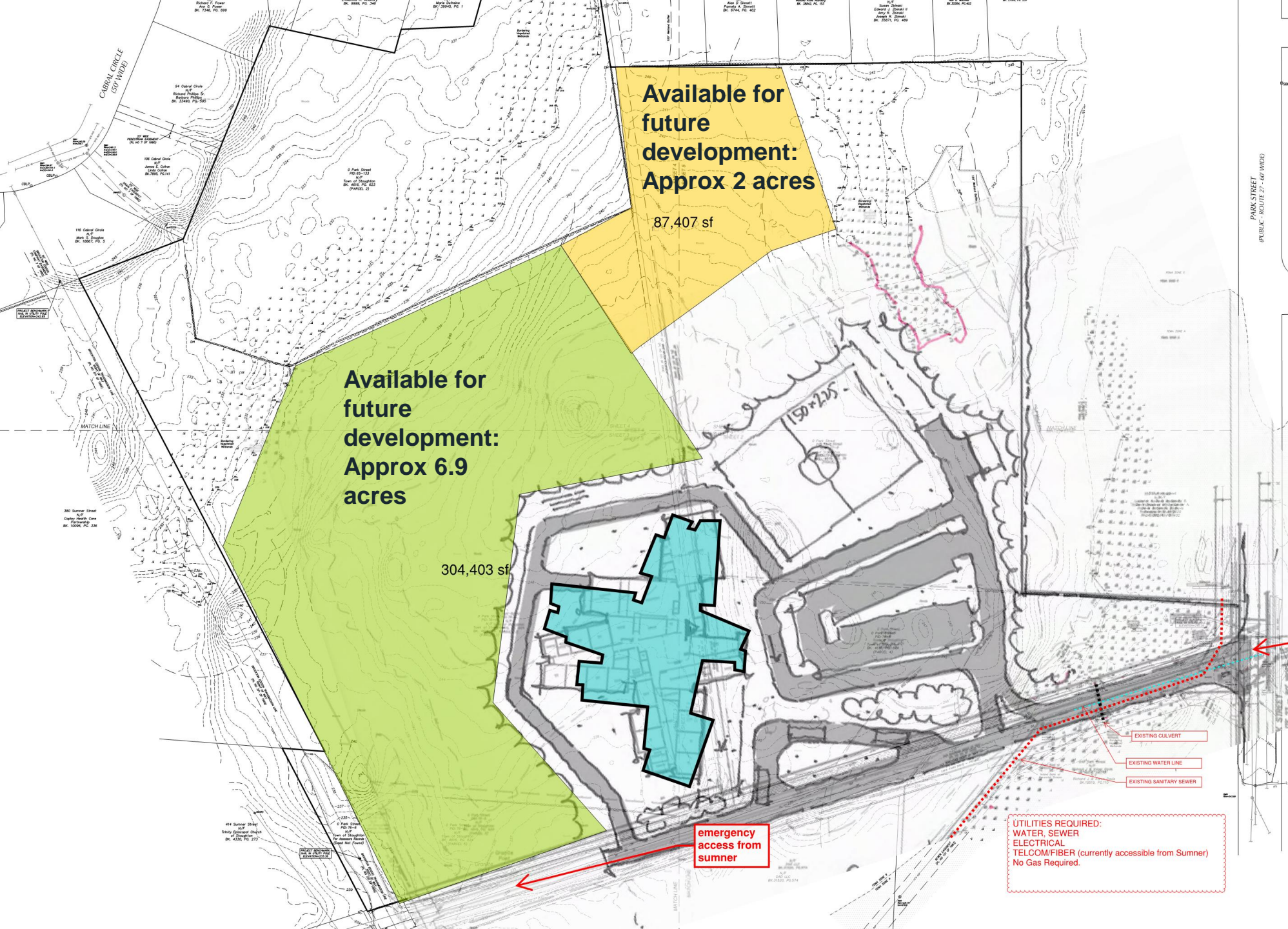
outdoor classroom

NC

1 - 1A

LINE LUMBER SITE

the pinwheel



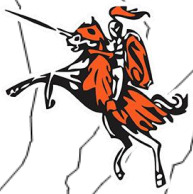
Available for future development:
Approx 2 acres
87,407 sf

Available for future development:
Approx 6.9 acres
304,403 sf

emergency access from summer

UTILITIES REQUIRED:
WATER, SEWER
ELECTRICAL
TELCOM/FIBER (currently accessible from Summer)
No Gas Required.

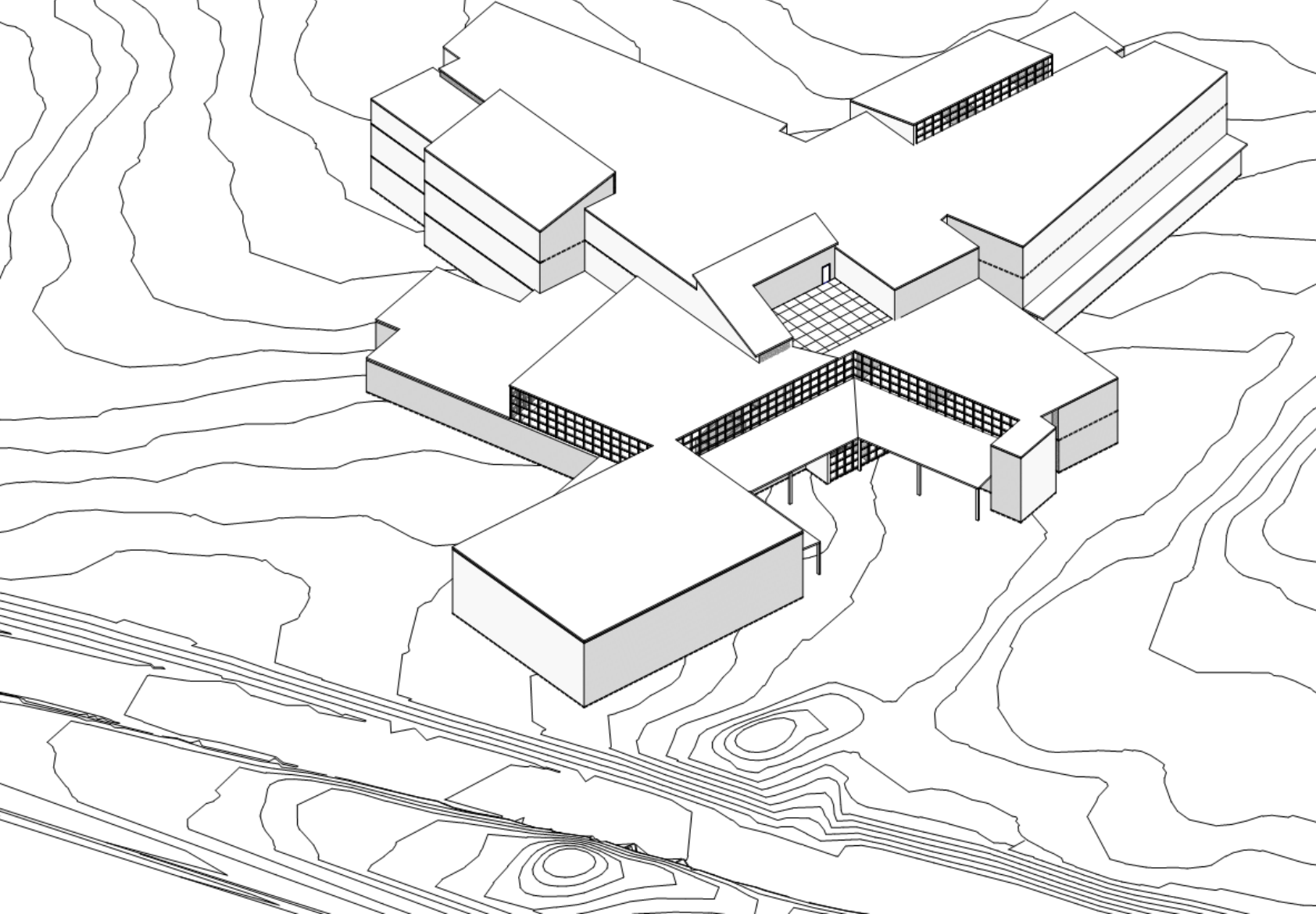
EXISTING CULVERT
EXISTING WATER LINE
EXISTING SANITARY SEWER



Pinwheel Plan – Preliminary Massing

NC
1 – 1A

LINE LUMBER SITE

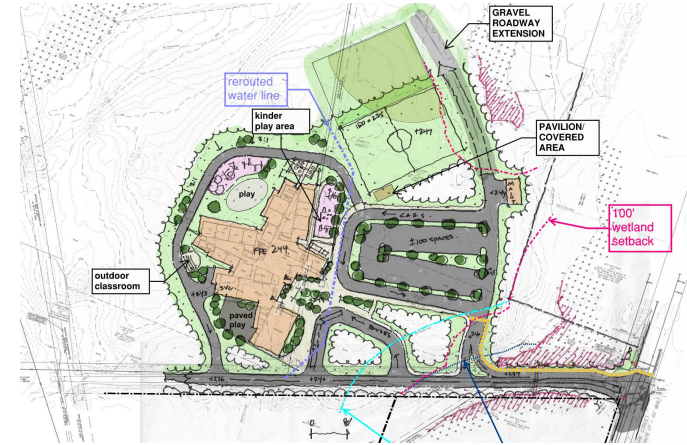
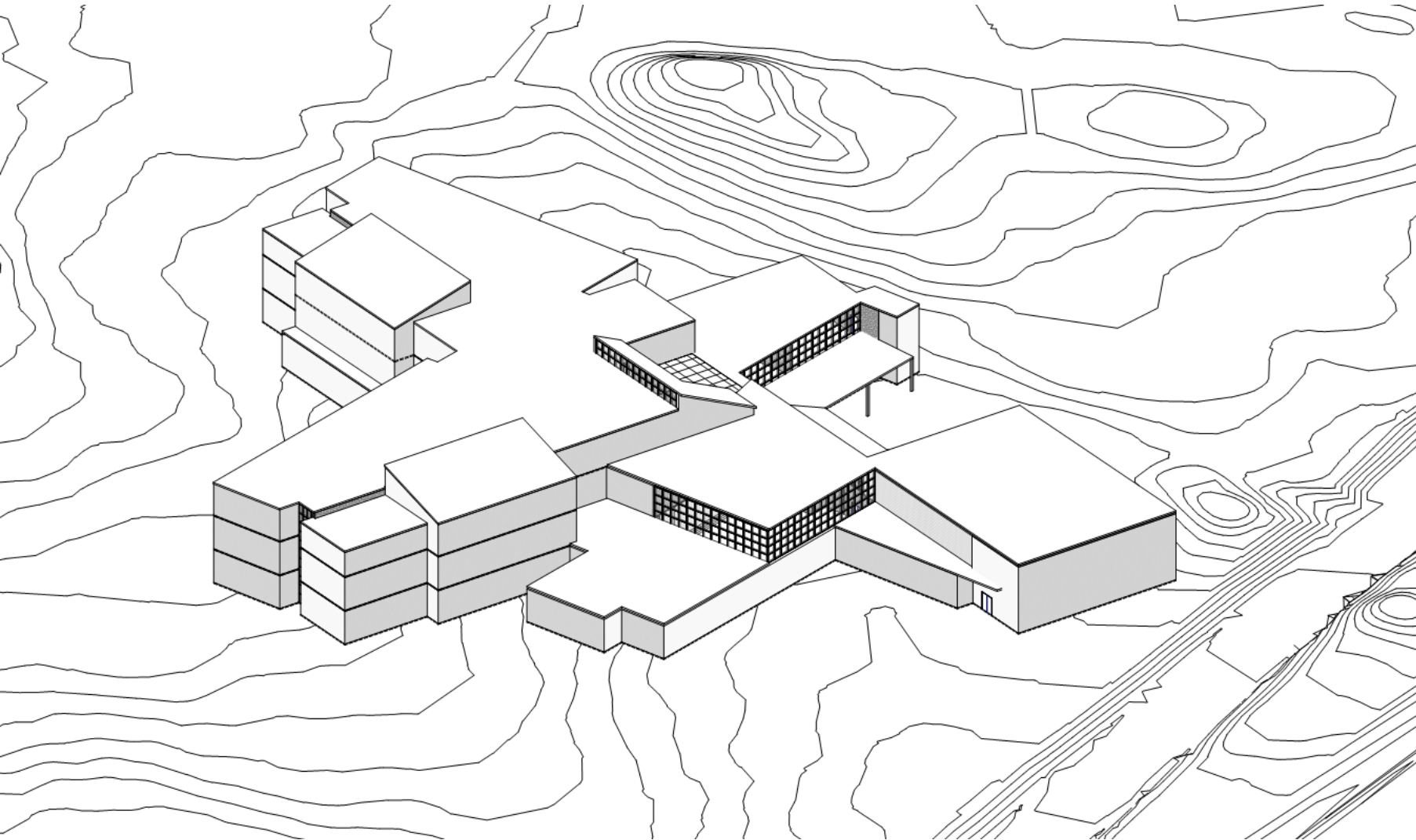




Pinwheel Plan – Preliminary Massing

NC
1 – 1A

LINE LUMBER SITE



The New Elementary School Project



COMMUNITY FORUM

6pm Weds July 19th @ the High School

*In-person and Remote Participants Welcome! **Childcare Available***



For more info: <https://www.stoughtonschools.org>

**Topics: Should we consolidate our Elementary Schools?
What is the Preferred Design Option?**