



June 1, 2023

Project Timeline

Why & How we got here: Problem

Where We Are

Project Goals

Looking Ahead

Consolidation Impacts

Project Options

The New Elementary School | stoughton.ma
Community Forum

6pm @ Gibbons Elementary School

VERTEX[®]

DRA



How We Got Here | [masterplan overview](#)

1 2010 Master Plan Update & School needs were ranked

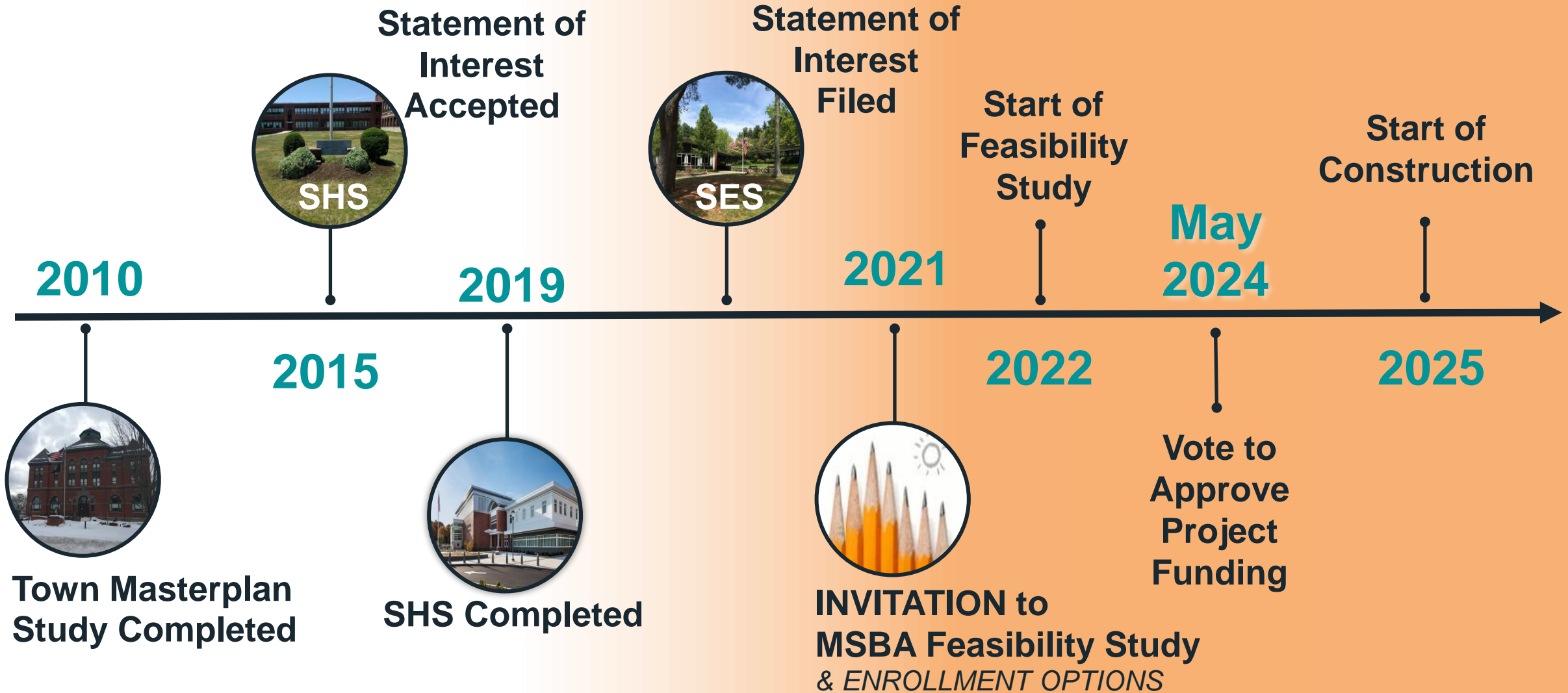
Some capital repairs were deferred due to SOI submissions

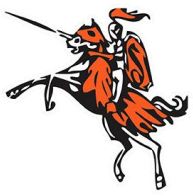
2 Statement of Interest Submitted to MSBA for High School

3 Statement of Interest Submitted to MSBA for South Elementary School – *Greatest Need*



Project Timeline





How We Got Here

1



**South
Elementary
School:
1958/1965**

2



**Wilkins
Elementary
School:
1954/1962**

3



**Hansen
Elementary
School:
1962/1966**

4



**Dawe
Elementary
School:
1969**

5



**Gibbons
Elementary
School:
1971**



Where we've been | existing conditions assessment

Architectural

Structural Engineers

MEPFP Engineers

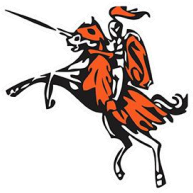
ADA - Access

Civil Engineers

Site Assessment



- **Code Assessment – ADA Issues**
- **Deterioration of Building Systems/Infrastructure**
- **Energy Inefficient Envelope**
- **Poor Site Circulation**



The New Elementary School Project



**Should Stoughton pursue a
225 or 515 Enrollment
Elementary School Project?**

School Committee to Decide Summer 2023



Suggestions?

Check out the website!

Email us at
NewElementarySchool@stoughtonschools.org

Sugestões?

Confira o site!

Envie-nos um e-mail para
NewElementarySchool@stoughtonschools.org

<https://www.stoughtonschools.org>

VERTEX[®]

DRA



The New Elementary School Project

SCHOOL COMMITTEE **timeline**



School Building Committee

SBC Goal: select preferred design option

School Committee

SC Goal: Determine 5 or 4 schools with redistricting

★ 5/23/2023

- Educational impacts – consolidation
- Social / emotional impacts - consolidation

★ 6/13/2023

- Preliminary cost information/ tax impacts
- Operational impacts – consolidation
- Community Considerations - consolidation
- Preliminary Evaluation – both options

★ 6/27/2023

★ July / August (tbd)

- Plan for Wilkins
- Plan for South
- **SC to VOTE Preferred Option**

Submit To MSBA 8/31/23



<https://www.stoughtonschools.org>



Meetings held at District Office



Massachusetts School Building Authority
Funding Affordable, Sustainable, and Efficient Schools in Partnership with Local Communities

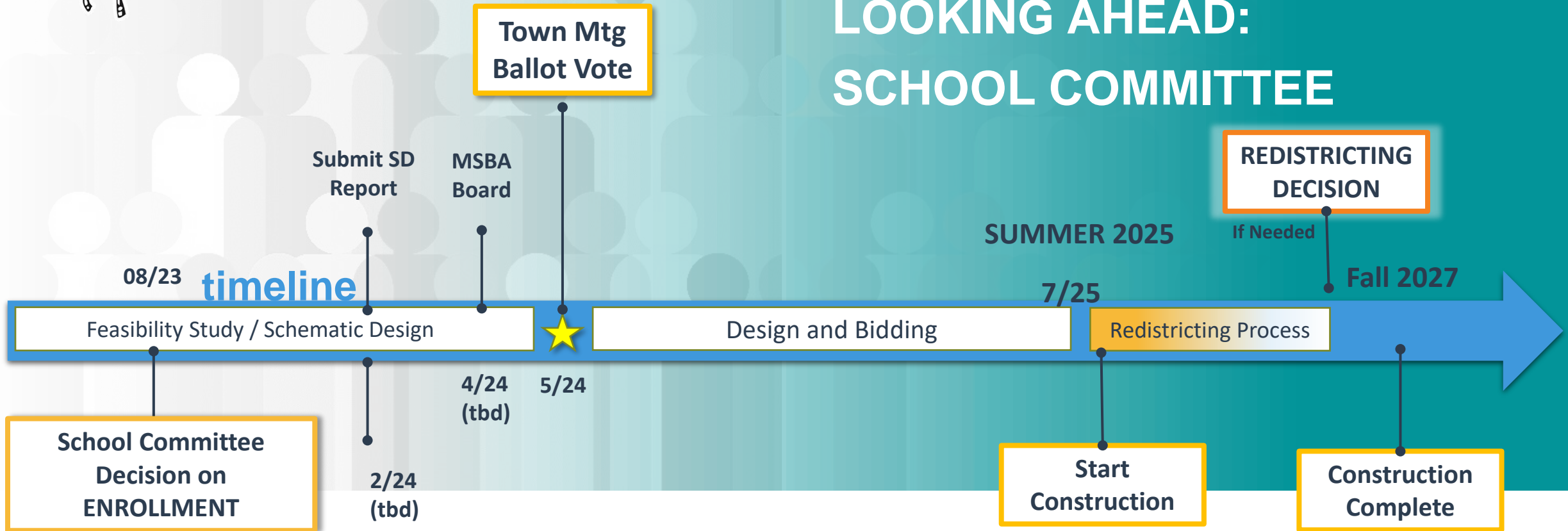


DRA



The New Elementary School Project

LOOKING AHEAD: SCHOOL COMMITTEE





225 Student Enrollment PROS & CONS

PROS

- ✓ Lower initial construction cost
- ✓ Minimize Impact to Redistricting
- ✓ Retain existing Neighborhood School size

CONS

- Higher long-term cost to the Town
- Higher Construction Cost per Student
- Does not improve resource management across the District



515 Student Enrollment PROS & CONS

PROS

- ✓ Maximize state reimbursement for Stoughton residents
- ✓ A larger school is more energy efficient & flexible
- ✓ More elementary students benefit from the new larger school
- ✓ Rebalance students to reduce pockets of overcrowding
- ✓ Ongoing Improvements at Dawe, Gibbons, & Hansen
- ✓ Reduce overall District costs in the long run
- ✓ New School can provide Community-wide amenities & program spaces

CONS

- Higher Initial Cost to the Town
- A greater number of students will transition during their elementary school career
- Does not retain existing Neighborhood School



Consolidation & Rebalancing the District

The Consultant Team Reviews District-Wide:

- Utilization
- Demographics
- LEP Status
- Students Impacted

Likely to Impact 35-40% of elementary students in the District

**based on preliminary models by independent redistricting consultant team*

Cropper GIS

VERTEX[®]

DRA



The New Elementary School Project

How does Consolidation Maximize Reimbursement?

- Stoughton's Reimbursement Rate from MSBA is 35-40% of eligible expenses
- More Grant \$\$ for Elementary School Construction
- Larger School = Larger Grant Value
- Reduced Construction Cost per Student





The New Elementary School Project

Is a larger school more energy efficient and flexible than two smaller schools?

- **Energy Efficiency**
 - Overall Energy Usage is less
 - 1 Kitchen vs. 2 Kitchens
 - 1 Gym vs. 2 Gyms
- **Educational Flexibility**
 - Student population bubbles can be better managed in a larger school
- **Less Disruption**
 - 1 Construction Project in lieu of multiple





The New Elementary School Project

More Elementary School Students Benefit From a new, larger school

- **Current Enrollment: 1568 students**
- **Approximately 38% of the Districts elementary students could attend the larger school (*based on current enrollment*)**
- **Only 14% would attend with a smaller school**





The New Elementary School Project

Elementary School Ongoing Improvements

Dawe Elementary School: 1969



- **Vestibule – Lobby Improvements**
- **Ventilation Improvements**
- **Security Improvements**

Gibbons Elementary School: 1971



- **Vestibule – Lobby Improvements**
- **Ventilation Improvements**
- **Security Improvements**

Hansen Elementary School: 1962-66



- **New Playground**
- **Security Improvements**



The New Elementary School Project

Reduce District Costs in the Long Run

- **Maintenance/Operating Costs**
- **Travel between schools**
- **Shared Resources**
- **Reduced cost of multiple Resources**
- **Following District Masterplan**



MA | recent elementary school sizes

- Data gathered from MSBA since 2019
- Minimum school size: 315 students
- Average School Size: 630 students
- Maximum school size: 1000 students

SOURCE: MSBA website; Board meetings, 2019 -2022. All Elementary school projects with approved Project Scope & Budget Agreements.



Proposed New Stoughton Elementary School
Consolidation Option:
515 student design enrollment
600+/- student capacity

District	School	Enrollment	Note
Brookline	Pierce	725	
Winchester	Lynch	520	
Amherst	Ft River	575	consolidation
Maynard	Green	395	
Hingham	Foster	605	
Lawrence	Leahy	1000	
Medfield	Dale	575	
Peabody	Welch	390	A/R
Randolph	Lyons	315	
Westfield	Franklin	395	
Wellesley	Hardy	365	consolidation
Fitchburg	Crocker	845	consolidation
Swampscott	Hadley	900	consolidation
Andover	West	925	
Westwood	Hanlon	560	consolidation
Groton	Roche	645	
Ashland	Mindess	635	
Gloucester	East	440	consolidation
Springfield	Deberry	800	consolidation
Acton-Box	Douglas	990	consolidation
Easton	Center	760	consolidation
Rockland	Jefferson	760	consolidation
Amesbury	Amesbury	425	
B-R	Mitchell	740	
Gardner	Waterford	925	consolidation
Millbury	Shaw	550	
W. Springfield	Coburn	585	
Marblehead	Gerry	450	consolidation
Tewksbury	Trahan	790	consolidation
Westboro	Fales	400	
Average		630	students
Median		595	students

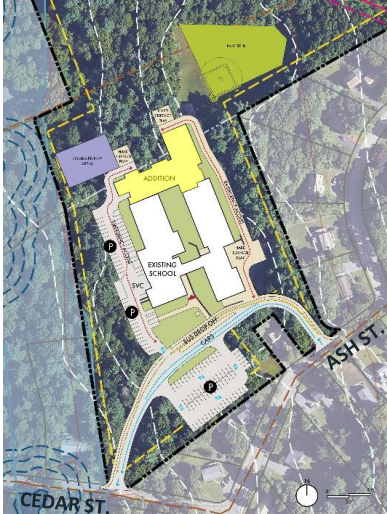




The New Elementary School Project

site plans

REPLACEMENT
Project Area:
12 acres



REPLACEMENT & CONSOLIDATION (both enrollments)
Project Area: 27 acres

NC 1 – 1A



'the pinwheel'

NC 2 – 2A



'the arc'

NC 3 – 3A



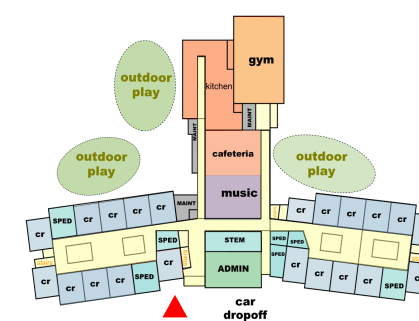
'the tee'

floor plans

Addition - Renovation



New Construction: Line Lumber Site



program key

- LIBRARY / MEDIA
- GYMNASIUM
- CLASSROOMS
- SPECIAL EDUCATION
- BREAKOUT
- SPECIALS (Art/Music/STEM)
- ADMIN/TEACHER SUPPORT
- CAFETERIA & KITCHEN
- CUST / IT / MAINT
- OUTDOOR LEARNING



OPTIONS | addition-renovation

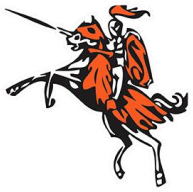


- | | |
|---|---|
| ■ LIBRARY / MEDIA | ■ SPECIALS (Art/Music/STEM) |
| ■ GYMNASIUM | ■ ADMIN/TEACHER SUPPORT |
| ■ CLASSROOMS | ■ CAFETERIA & KITCHEN |
| ■ SPECIAL EDUCATION | ■ CUST / IT / MAINT |
| ■ BREAKOUT | ■ OUTDOOR LEARNING |



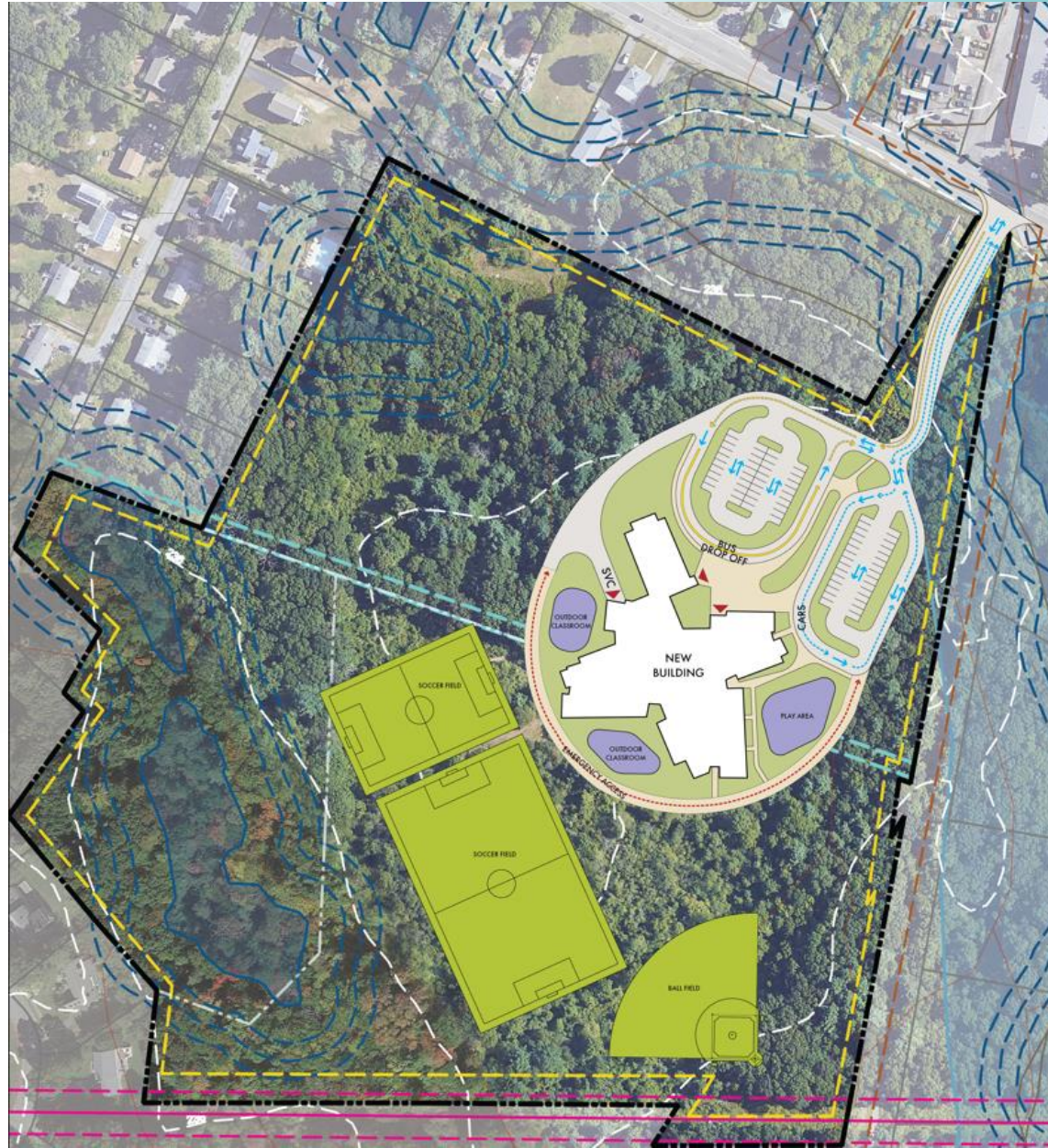
EXISTING COMBINED SITES
replacement

AR-1



OPTIONS |

new construction



NC
1 - 1A

LINE LUMBER SITE
the pinwheel



OPTIONS |

new construction



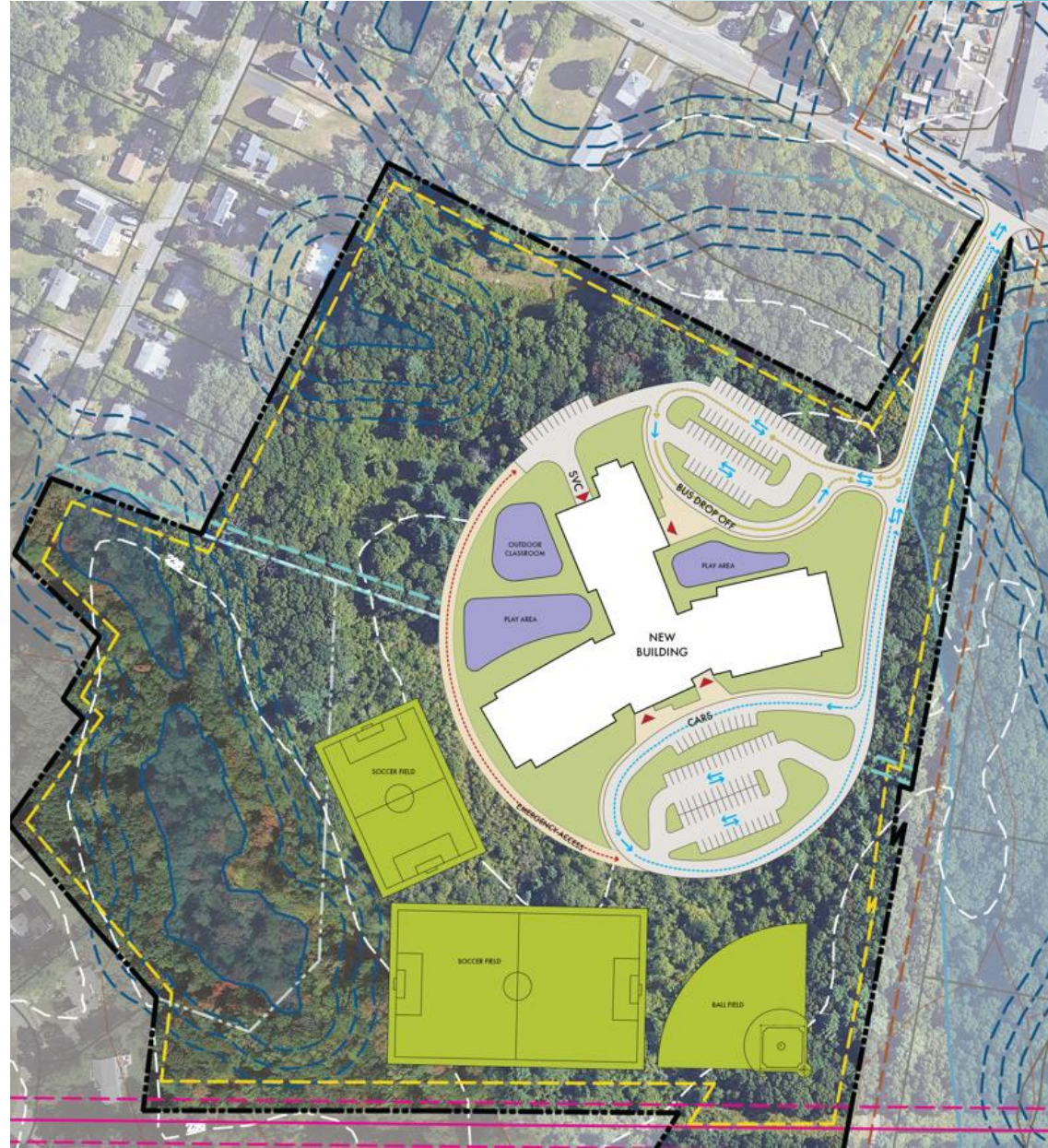
NC
2 – 2A

LINE LUMBER SITE
the arc



OPTIONS |

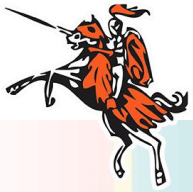
new construction



NC
3 – 3A

the tee

LINE LUMBER SITE



The New Elementary School Project

Questions?

**School Committee:
June 13
Cropper GIS Available for
Questions**

Save the Date!



Suggestions?

Check out the website!

Email us at

NewElementarySchool@stoughtonschools.org

Sugestões?

Confira o site!

Envie-nos um e-mail para

NewElementarySchool@stoughtonschools.org

<https://www.stoughtonschools.org>

VERTEX[®]

DRA



The New Elementary School Project

THANK YOU!



Suggestions?

Check out the website!

Email us at

NewElementarySchool@stoughtonschools.org

Sugestões?

Confira o site!

Envie-nos um e-mail para

NewElementarySchool@stoughtonschools.org

<https://www.stoughtonschools.org>

VERTEX[®]

DRA