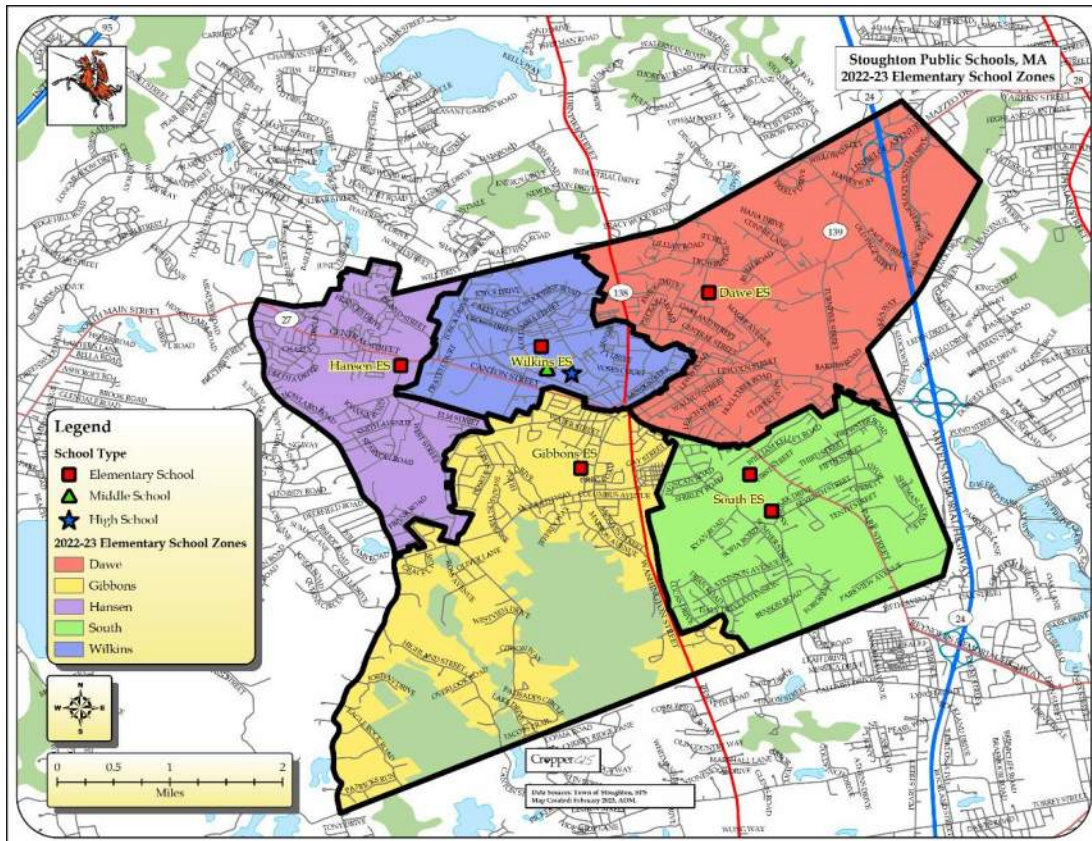


# Stoughton Public Schools, MA

## Options 1-4 Statistical Analysis April 2023



Cropper GIS



**Statistical Analysis**

The following handout contains draft preliminary options to demonstrate how boundaries could be potentially configured to align with facility planning changes. Included for every option are estimates for enrollment and utilization, demographics, impact data, and maps. The current student enrollment numbers were derived from the district's 2022-23 Student Database October 2022.

Current statistics are also reported in addition to the options. The data indicates that all options that have been drafted, provide a balance of utilization and demographics among schools. All options impact a relatively similar number of students. These serve as a proof of concept to align with long range facility, plans, and a more comprehensive review of boundaries. There are other alternatives that could be considered along with potential changes based off public input and other local stakeholder input. These should be considered preliminary and final boundaries should be evaluated in a more comprehensive process once the facility planning effort is complete.

**Enrollment and Utilization Tables**

The following tables show current utilization by percentage based on current enrollment and 2022-23 building capacity. In comparison Options 1 - 4 estimate enrollment based on student live-in (students are assumed to attend the school to which they are zoned). Cells are color coded based on deviation from the standard percentage in each field. Percentages are rounded.

Within 10%
Between 10-15%
Over/Under 15%

2022-23 Enrollment and Utilization											
School Name	Capacity	KF	1	2	3	4	5	Total Enrollment	Utilization	Trend	
Dawe ES	404	72	79	54	61	55	60	381	94.3%	▲	
Gibbons ES	348	54	59	57	60	67	52	349	100.3%	▬	
Hansen ES	272	40	54	38	50	38	44	264	97.1%	▬	
South ES	288	47	48	49	52	42	43	281	97.6%	▲	
Wilkins ES	348	68	66	42	42	34	41	293	84.2%	▲	
<b>Total</b>	<b>1660</b>	<b>281</b>	<b>306</b>	<b>240</b>	<b>265</b>	<b>236</b>	<b>240</b>	<b>1568</b>	<b>94.46%</b>	<b>▲</b>	

Option 1 Estimated Enrollment											
School Name	Option Capacity	KF	1	2	3	4	5	Total Enrollment	Utilization	Trend	
Dawe ES	404	79	77	54	65	55	54	384	95.0%	▲	
Gibbons ES	348	62	70	62	48	50	42	334	96.0%	▲	
Hansen ES	272	43	55	32	51	33	41	255	93.8%	▲	
New ES	596	97	104	92	101	98	103	595	99.8%	▬	
Wilkins ES											
<b>Total</b>	<b>1620</b>	<b>281</b>	<b>306</b>	<b>240</b>	<b>265</b>	<b>236</b>	<b>240</b>	<b>1568</b>	<b>96.79%</b>	<b>▲</b>	

Option 2 Estimated Enrollment											
School Name	Option Capacity	KF	1	2	3	4	5	Total Enrollment	Utilization	Trend	
Dawe ES	404	84	77	59	49	51	50	370	91.6%	▲	
Gibbons ES	348	57	70	53	51	63	56	350	100.6%	▬	
Hansen ES	272	45	50	34	62	36	46	273	100.4%	▬	
New ES	596	95	109	94	103	86	88	575	96.5%	▲	
Wilkins ES											
<b>Total</b>	<b>1620</b>	<b>281</b>	<b>306</b>	<b>240</b>	<b>265</b>	<b>236</b>	<b>240</b>	<b>1568</b>	<b>96.79%</b>	<b>▲</b>	



		Option 3 Estimated Enrollment								
School Name	Option Capacity	KF	1	2	3	4	5	Total Enrollment	Utilization	Trend
Dawe ES	404	77	74	52	64	54	52	409	101.2%	▲
Gibbons ES	348	64	73	64	49	51	44	309	88.8%	▲
Hansen ES	272	43	55	32	51	33	41	255	93.8%	▲
New ES	596	97	104	92	101	98	103	595	99.8%	▬
Wilkins ES										
<b>Total</b>	<b>1620</b>	<b>281</b>	<b>306</b>	<b>240</b>	<b>265</b>	<b>236</b>	<b>240</b>	<b>1568</b>	<b>96.79%</b>	<b>▲</b>

		Option 4 Estimated Enrollment								
School Name	Option Capacity	KF	1	2	3	4	5	Total Enrollment	Utilization	Trend
Dawe ES	404	94	89	69	61	56	51	420	104.0%	▲
Gibbons ES	348	57	70	53	51	63	56	350	100.6%	▬
Hansen ES	272	45	50	34	62	36	46	273	100.4%	▬
New ES	596	85	97	84	91	81	87	525	88.1%	▲
Wilkins ES										
<b>Total</b>	<b>1620</b>	<b>281</b>	<b>306</b>	<b>240</b>	<b>265</b>	<b>236</b>	<b>240</b>	<b>1568</b>	<b>96.79%</b>	<b>▲</b>



**Demographic Statistics**

The following tables compare current race/ethnic, free/reduced lunch, limited English proficiency(LEP) demographic statistics to Options 1 - 4 statistics. Statistics are shown as a percentage of students by school compared to the district average percentage.

2022-23 Enrolled Race/Ethnicity				
School Name	Black/African American	White	Hispanic	Other
Dawe ES	23%	51%	18%	9%
Gibbons ES	21%	52%	17%	10%
Hansen ES	19%	51%	16%	15%
South ES	18%	50%	12%	20%
Wilkins ES	19%	47%	24%	11%
<b>Total</b>	20%	50%	17%	13%

School Name	Race/Ethnicity Option 1				Race/Ethnicity Option 2			
	Black/African American	White	Hispanic	Other	Black/African American	White	Hispanic	Other
Dawe ES	23%	48%	18%	11%	19%	48%	20%	12%
Gibbons ES	17%	49%	22%	11%	16%	58%	16%	10%
Hansen ES	20%	48%	18%	14%	25%	42%	17%	15%
New ES	19%	53%	14%	14%	20%	50%	16%	13%
Wilkins ES								
<b>Total</b>	20%	50%	17%	13%	20%	50%	17%	13%

School Name	Race/Ethnicity Option 3				Race/Ethnicity Option 4			
	Black/African American	White	Hispanic	Other	Black/African American	White	Hispanic	Other
Dawe ES	23%	48%	18%	11%	19%	48%	21%	12%
Gibbons ES	17%	50%	23%	11%	16%	58%	16%	10%
Hansen ES	20%	48%	18%	14%	25%	42%	17%	15%
New ES	19%	53%	14%	14%	21%	50%	15%	14%
Wilkins ES								
<b>Total</b>	20%	50%	17%	13%	20%	50%	17%	13%



School Name	2022-23 Enrolled Free and Reduced Meals		
	Free	Reduced	Paid
Dawe ES	38%	2%	60%
Gibbons ES	38%	4%	58%
Hansen ES	40%	2%	58%
South ES	29%	3%	68%
Wilkins ES	59%	1%	40%
<b>Total</b>	41%	2%	57%

School Name	Free and Reduced Meals Option 1			Free and Reduced Meals Option 2		
	Free	Reduced	Paid	Free	Reduced	Paid
Dawe ES	43%	1%	56%	44%	1%	55%
Gibbons ES	52%	3%	45%	34%	3%	62%
Hansen ES	45%	1%	53%	49%	1%	49%
New ES	31%	3%	66%	39%	3%	58%
Wilkins ES						
<b>Total</b>	41%	2%	57%	41%	2%	57%

School Name	Free and Reduced Meals Option 3			Free and Reduced Meals Option 4		
	Free	Reduced	Paid	Free	Reduced	Paid
Dawe ES	43%	1%	56%	45%	1%	54%
Gibbons ES	52%	3%	45%	34%	3%	62%
Hansen ES	45%	1%	53%	49%	1%	49%
New ES	31%	3%	66%	37%	3%	60%
Wilkins ES						
<b>Total</b>	41%	2%	57%	41%	2%	57%

School Name	2022-23 Enrolled LEP Status		
	0	1	4
Dawe ES	88%	12%	1%
Gibbons ES	90%	10%	1%
Hansen ES	93%	6%	0%
South ES	92%	8%	0%
Wilkins ES	73%	27%	0%
<b>Total</b>	87%	13%	0%

School Name	LEP Status Option 1			LEP Status Option 2		
	0	1	4	0	1	4
Dawe ES	88%	12%	0%	84%	16%	0%
Gibbons ES	78%	21%	1%	89%	10%	1%
Hansen ES	90%	9%	0%	89%	10%	0%
New ES	90%	9%	0%	87%	13%	0%
Wilkins ES						
<b>Total</b>	87%	13%	0%	87%	13%	0%

School Name	LEP Status Option 3			LEP Status Option 4		
	0	1	4	0	1	4
Dawe ES	88%	12%	0%	84%	16%	0%
Gibbons ES	79%	21%	1%	89%	10%	1%
Hansen ES	90%	9%	0%	89%	10%	0%
New ES	90%	9%	0%	87%	13%	0%
Wilkins ES						
<b>Total</b>	87%	13%	0%	87%	13%	0%

LEP = Limited English Proficiency  
 0 = Can perform ordinary school work in English  
 1 = Can NOT perform ordinary school work in English  
 4 = Can NOT perform ordinary school work in English but opted out of the program.



**Impact Tables**

The following tables show how many students are impacted in Options 1 - 4. Rows highlighted in green show areas that are not impacted, and rows highlighted in tan show impacted areas.

**Total Students Impacted**

Student Impact Estimates		
Option	Total K-5th Live-In Students Impacted	Percent K-5th Live-In Students Impacted
Option 1	638	41.1%
Option 2	581	37.4%
Option 3	638	41.1%
Option 4	556	35.8%

**Detailed Option Impacts**

ES Zone 2022-23	ES Option 1	Total 2022-23 K-5th Live-In Students
Dawe	Dawe	231
Dawe	South	122
Gibbons	Gibbons	162
Gibbons	South	184
Hansen	Gibbons	32
Hansen	Hansen	233
South	New ES	289
Wilkins	Dawe	143
Wilkins	Gibbons	137
Wilkins	Hansen	20

ES Zone 2022-23	ES Option 3	Total 2022-23 K-5th Live-In Students
Dawe	Dawe	231
Dawe	South	122
Gibbons	Gibbons	162
Gibbons	South	184
Hansen	Gibbons	32
Hansen	Hansen	233
South	New ES	289
Wilkins	Dawe	132
Wilkins	Gibbons	148
Wilkins	Hansen	20

ES Zone 2022-23	ES Option 2	Total 2022-23 K-5th Live-In Students
Dawe	Dawe	167
Dawe	South	186
Gibbons	Gibbons	283
Gibbons	South	63
Hansen	Gibbons	32
Hansen	Hansen	233
South	New ES	289
Wilkins	Dawe	193
Wilkins	Gibbons	32
Wilkins	Hansen	38
Wilkins	South	37

ES Zone 2022-23	ES Option 4	Total 2022-23 K-5th Live-In Students
Dawe	Dawe	192
Dawe	South	161
Gibbons	Gibbons	283
Gibbons	South	63
Hansen	Gibbons	32
Hansen	Hansen	233
South	New ES	289
Wilkins	Dawe	218
Wilkins	Gibbons	32
Wilkins	Hansen	38
Wilkins	South	12

# Stoughton Public Schools, MA 2022-23 Elementary School Zones



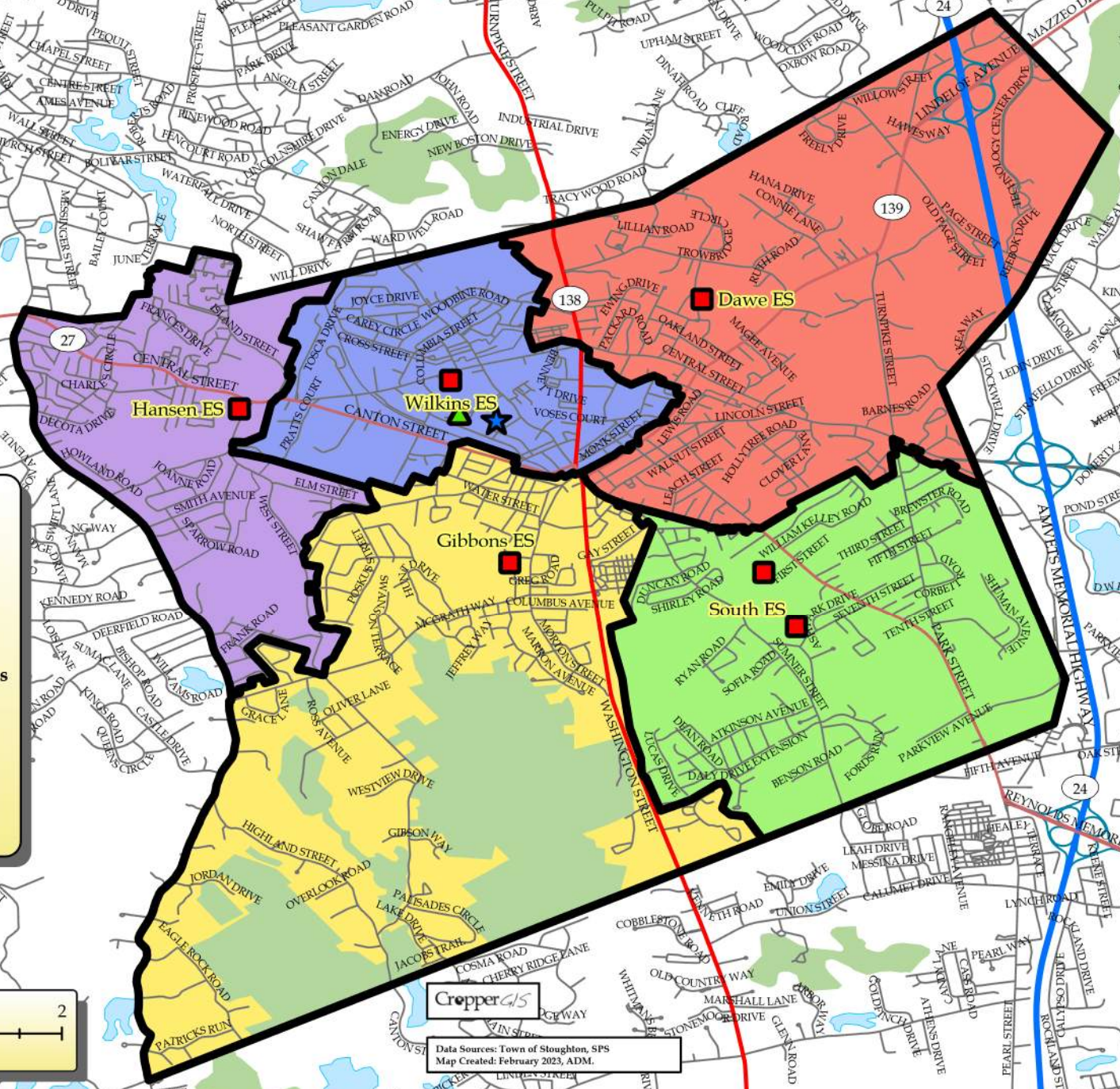
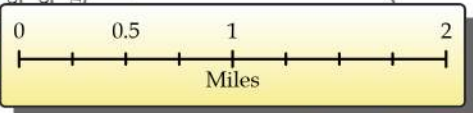
**Legend**

**School Type**

- Elementary School
- ▲ Middle School
- ★ High School

**2022-23 Elementary School Zones**

- Dawe
- Gibbons
- Hansen
- South
- Wilkins



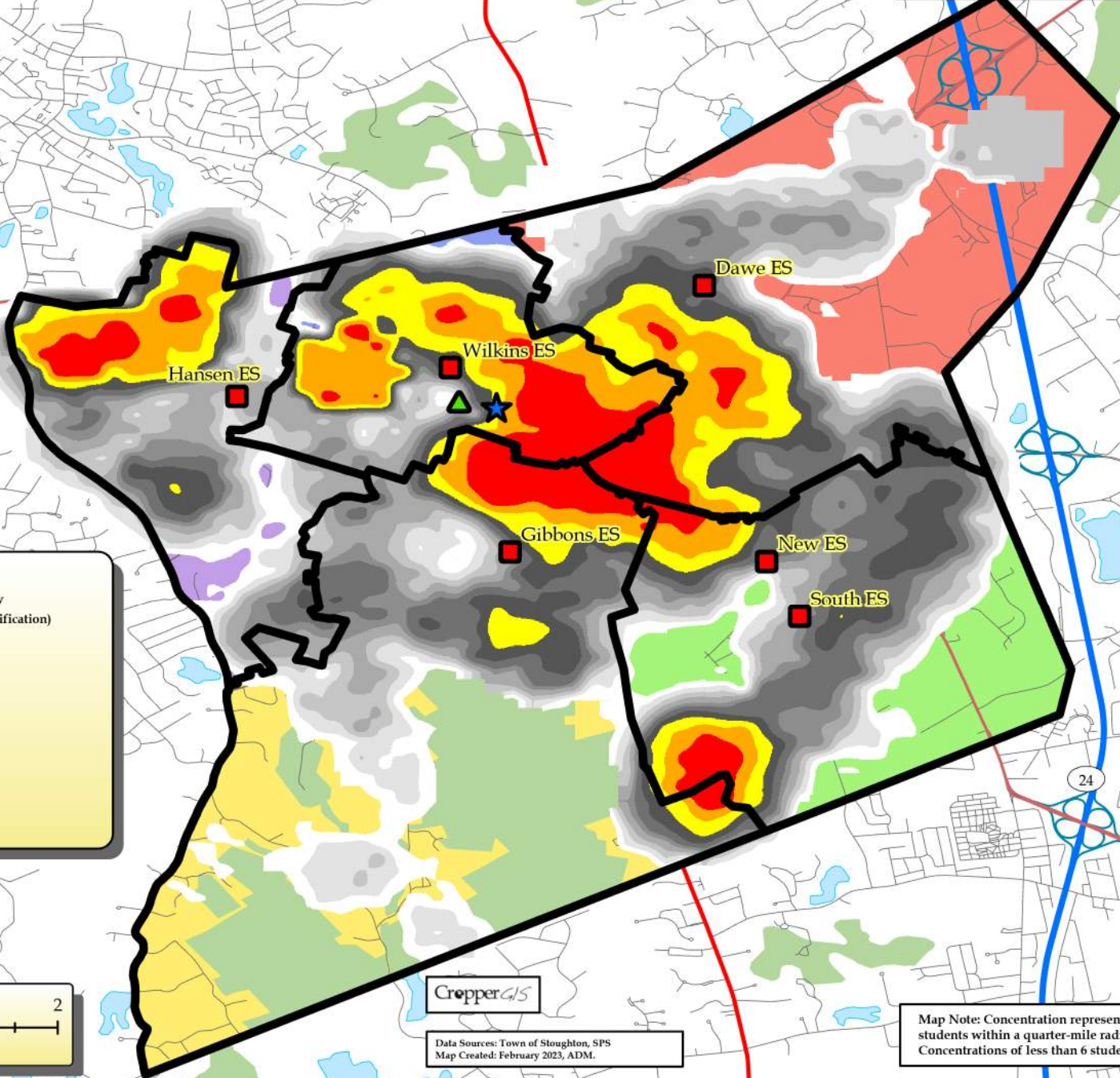
**CropperGIS**  
Data Sources: Town of Stoughton, SPS  
Map Created: February 2023, ADM.

Stoughton Public Schools, MA  
2022-23 ES Zones  
Student Density



**Legend**

<b>School Type</b>	<b>Student Density (Quantile Classification)</b>
Elementary School	56 - 85
Middle School	44 - 55
High School	34 - 43
<b>2022-23 Elementary School Zones</b>	27 - 33
Dawe	22 - 26
Gibbons	19 - 21
Hansen	15 - 18
South	12 - 14
Wilkins	9 - 11
	7 - 8



CrøpperGIS

Data Sources: Town of Stoughton, SPS  
Map Created: February 2023, ADM.

Map Note: Concentration represents counts of students within a quarter-mile radius. Concentrations of less than 6 students are excluded.



**Stoughton Public Schools, MA  
Elementary School Zones  
DRAFT Preliminary Option 1**



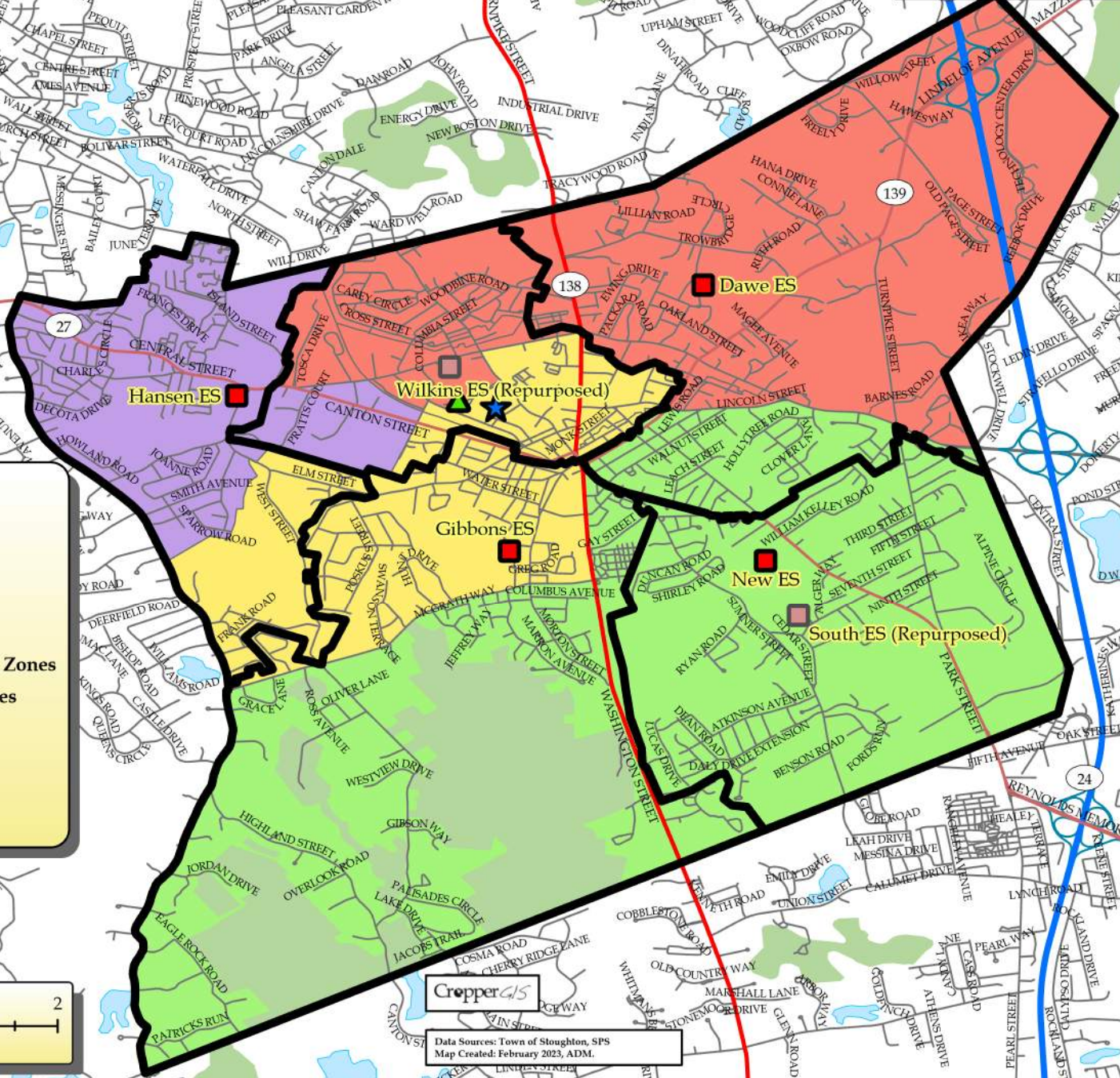
**Legend**

**School Type**

- Elementary School
- ▲ Middle School
- ★ High School
- 2022-23 Elementary School Zones

**Option 1 Elementary School Zones**

- Dawe
- Gibbons
- Hansen
- New ES



**CropperGIS**  
Data Sources: Town of Stoughton, SPS  
Map Created: February 2023, ADM.

Stoughton Public Schools, MA  
 ES DRAFT Preliminary Option 1  
 Student Density



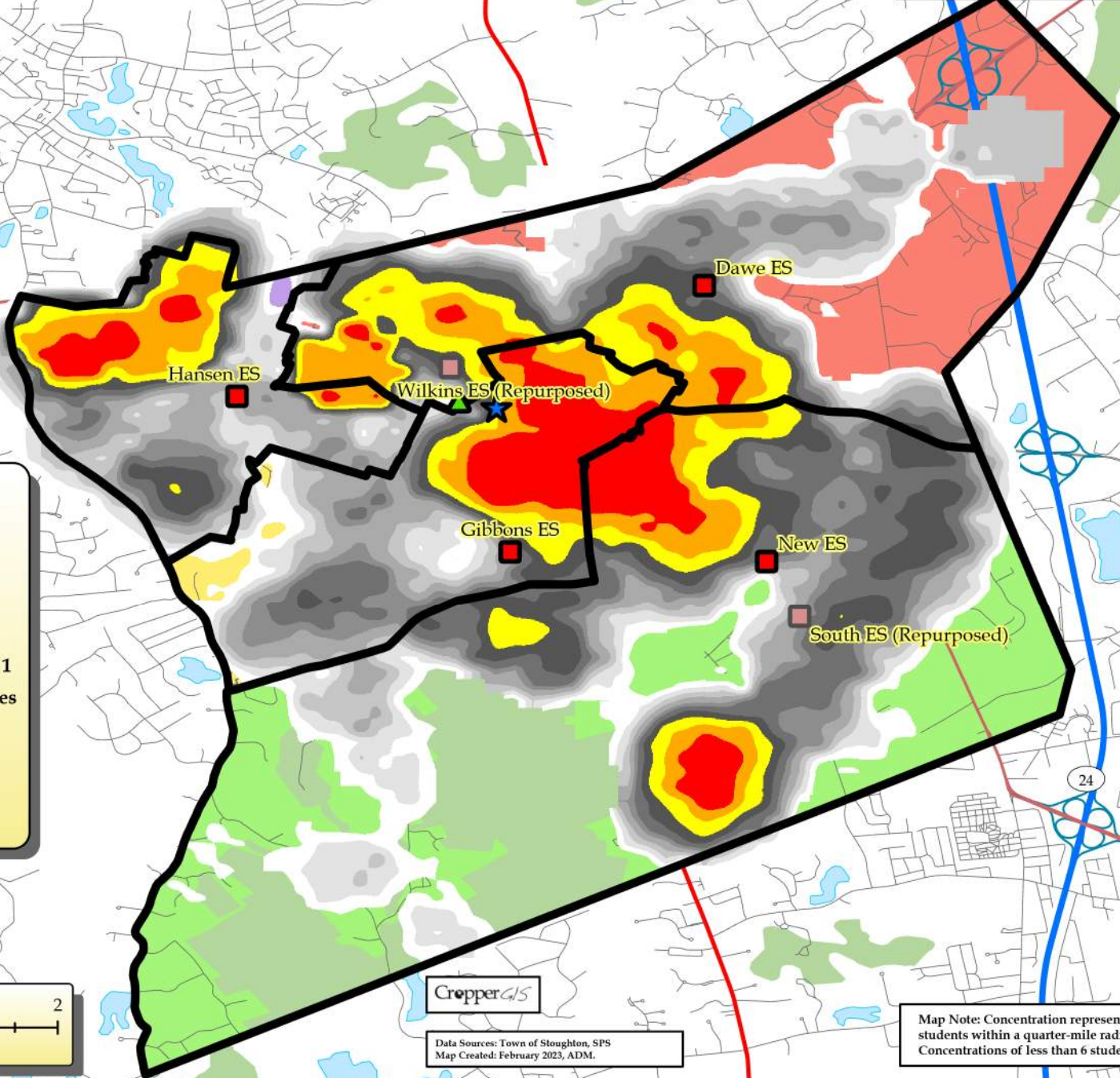
**Legend**

**School Type**

- Elementary School
- ▲ Middle School
- ★ High School
- Elementary School Option 1

**Option 1 Elementary School Zones**

- Dawe
- Gibbons
- Hansen
- New ES



CropperGIS

Data Sources: Town of Stoughton, SPS  
 Map Created: February 2023, ADM.

Map Note: Concentration represents counts of students within a quarter-mile radius. Concentrations of less than 6 students are excluded.

**Stoughton Public Schools, MA  
Elementary School Zones  
DRAFT Preliminary Option 2**



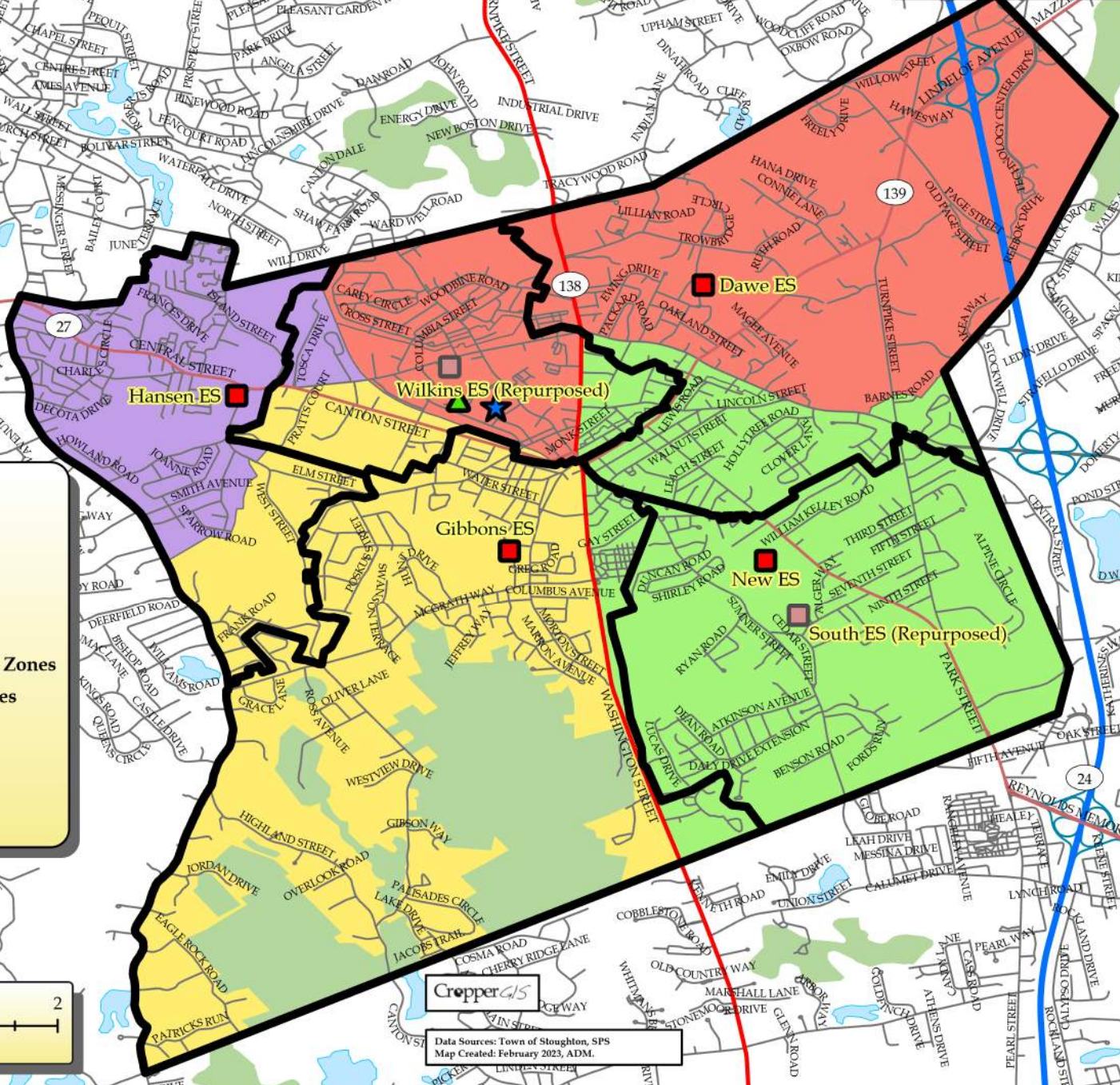
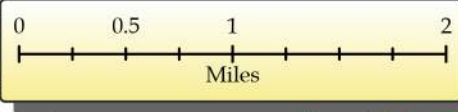
**Legend**

**School Type**

- Elementary School
- ▲ Middle School
- ★ High School
- 2022-23 Elementary School Zones

**Option 2 Elementary School Zones**

- Dawe
- Gibbons
- Hansen
- South



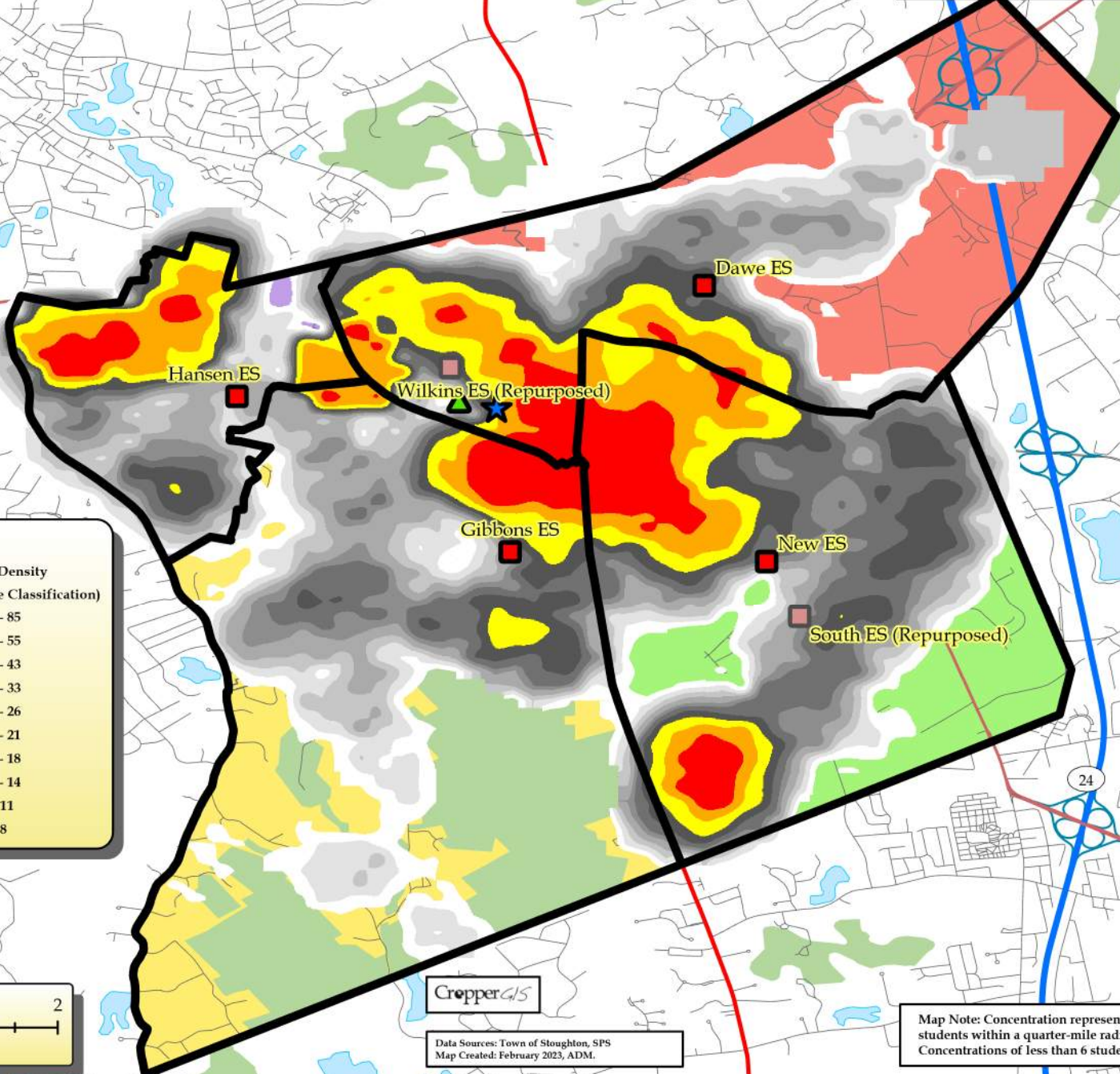
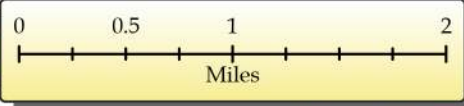
**CropperGIS**  
Data Sources: Town of Stoughton, SPS  
Map Created: February 2023, ADM.

Stoughton Public Schools, MA  
 ES DRAFT Preliminary Option 2  
 Student Density



**Legend**

<b>School Type</b>	<b>Student Density (Quantile Classification)</b>
Elementary School	56 - 85
Middle School	44 - 55
High School	34 - 43
Elementary School Option 2	27 - 33
<b>Option 2 Elementary School Zones</b>	22 - 26
Dawe	19 - 21
Gibbons	15 - 18
Hansen	12 - 14
South	9 - 11
	7 - 8



CrøpperGIS

Data Sources: Town of Stoughton, SPS  
 Map Created: February 2023, ADM.

Map Note: Concentration represents counts of students within a quarter-mile radius. Concentrations of less than 6 students are excluded.

**Stoughton Public Schools, MA  
Elementary School Zones  
DRAFT Preliminary Option 3**



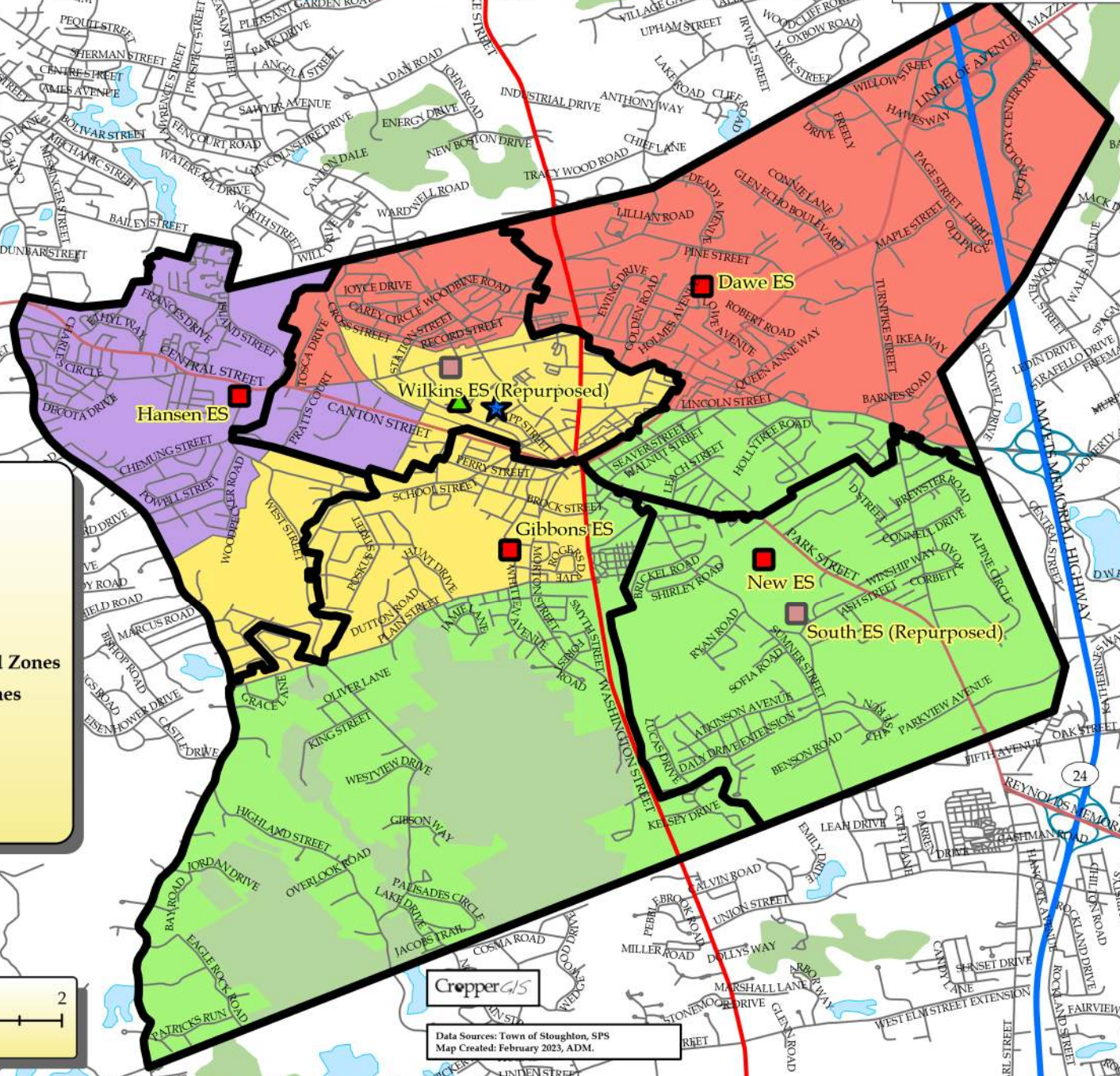
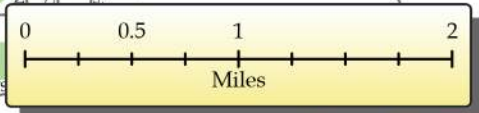
**Legend**

**School Type**

- Elementary School
- ▲ Middle School
- ★ High School
- 2022-23 Elementary School Zones

**Option 3 Elementary School Zones**

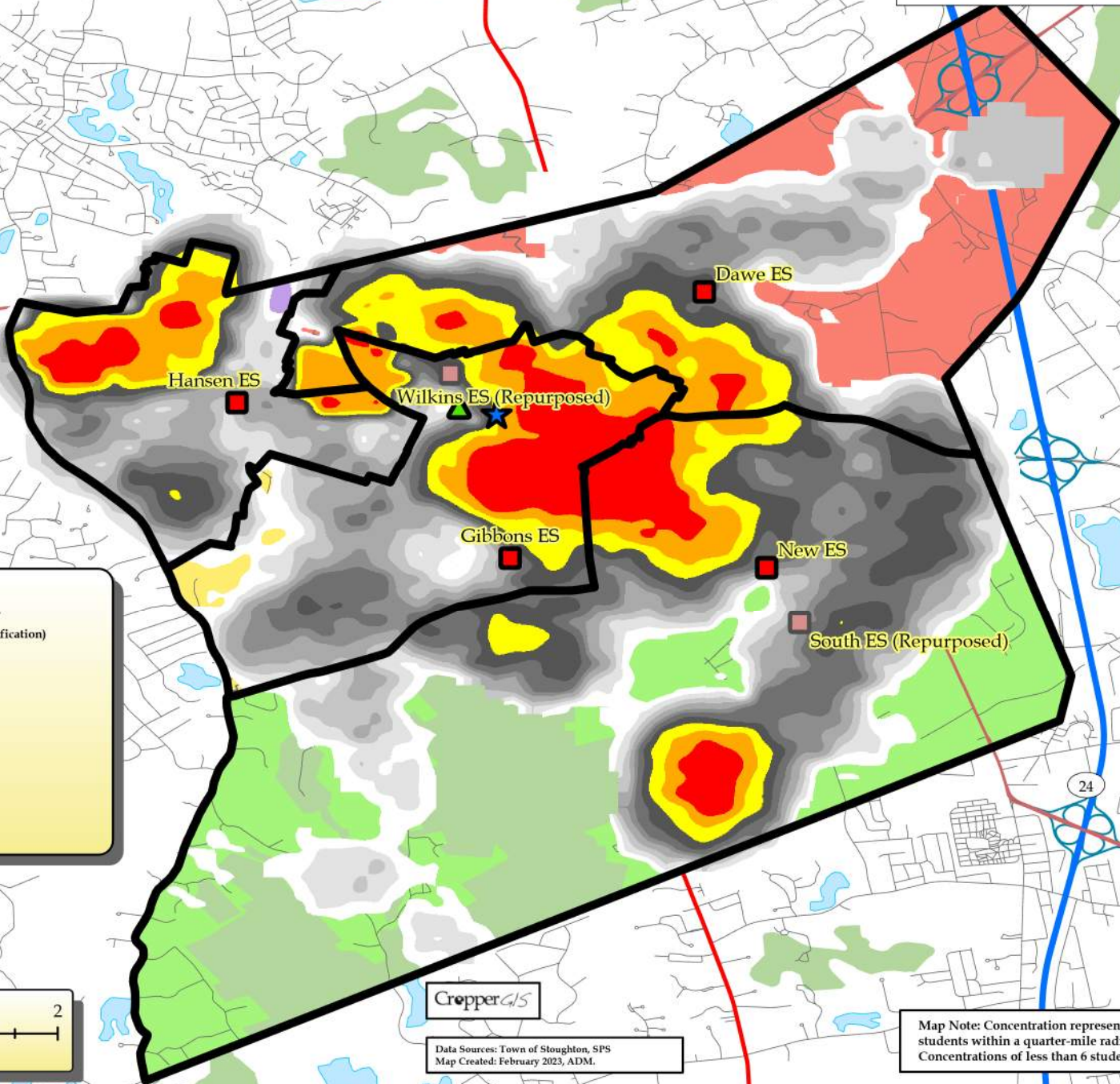
- Dawe
- Gibbons
- Hansen
- South



CropperGIS

Data Sources: Town of Stoughton, SPS  
Map Created: February 2023, ADM.

Stoughton Public Schools, MA  
 ES DRAFT Preliminary Option 3  
 Student Density



**Legend**

<b>School Type</b>	<b>Student Density (Quantile Classification)</b>
Elementary School	56 - 85
Middle School	44 - 55
High School	34 - 43
Elementary School Option 3	27 - 33
<b>Option 3 Elementary School Zones</b>	22 - 26
Dawe	19 - 21
Gibbons	15 - 18
Hansen	12 - 14
South	9 - 11
	7 - 8



CropperGIS

Data Sources: Town of Stoughton, SPS  
 Map Created: February 2023, ADM.

Map Note: Concentration represents counts of students within a quarter-mile radius. Concentrations of less than 6 students are excluded.

**Stoughton Public Schools, MA  
Elementary School Zones  
DRAFT Preliminary Option 4**



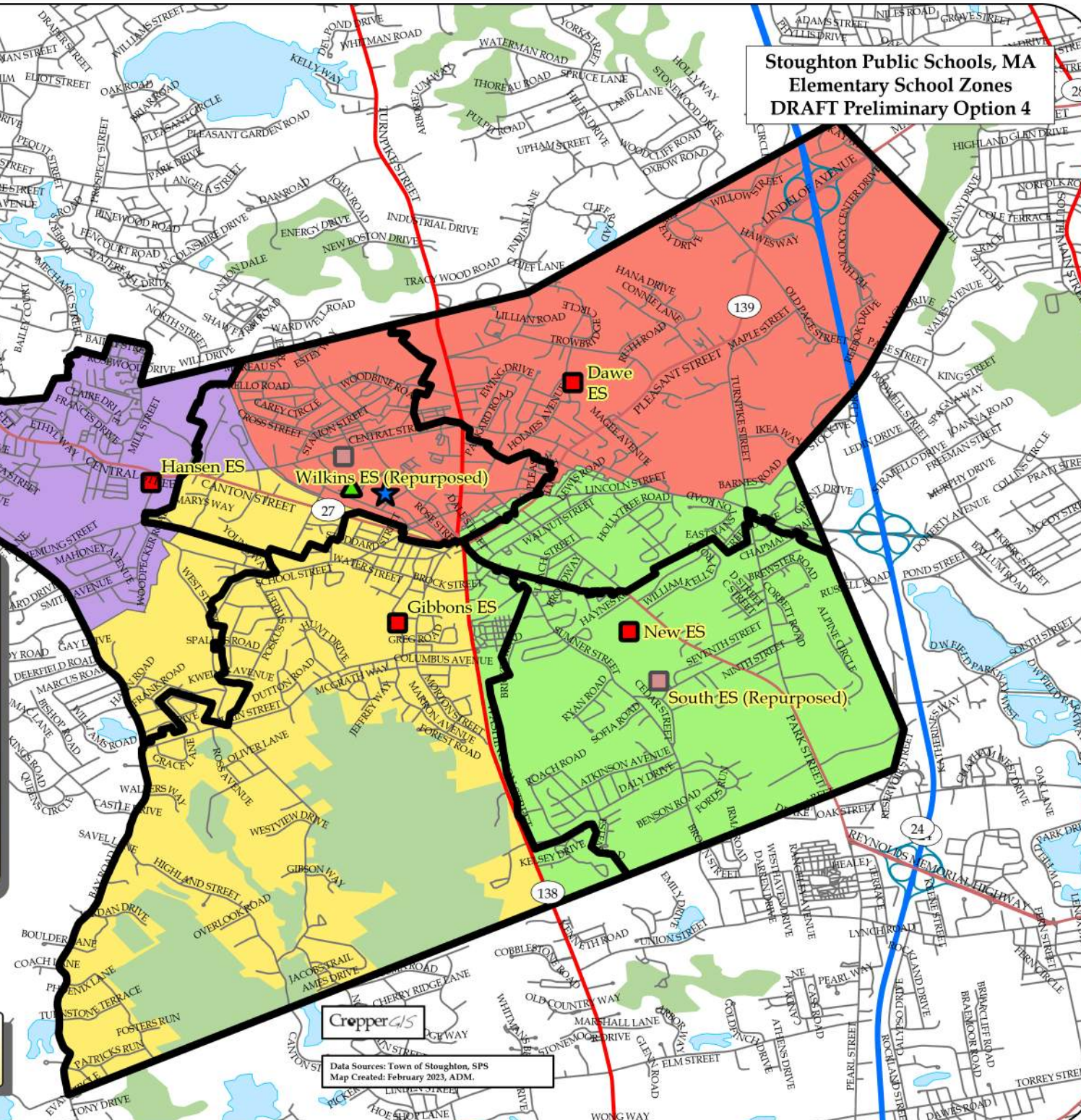
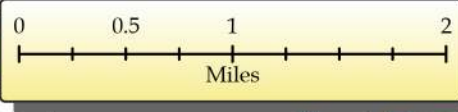
**Legend**

**School Type**

- Elementary School
- ▲ Middle School
- ★ High School
- 2022-23 Elementary School Zones

**Option 4 Elementary School Zones**

- Dawe
- Gibbons
- Hansen
- South



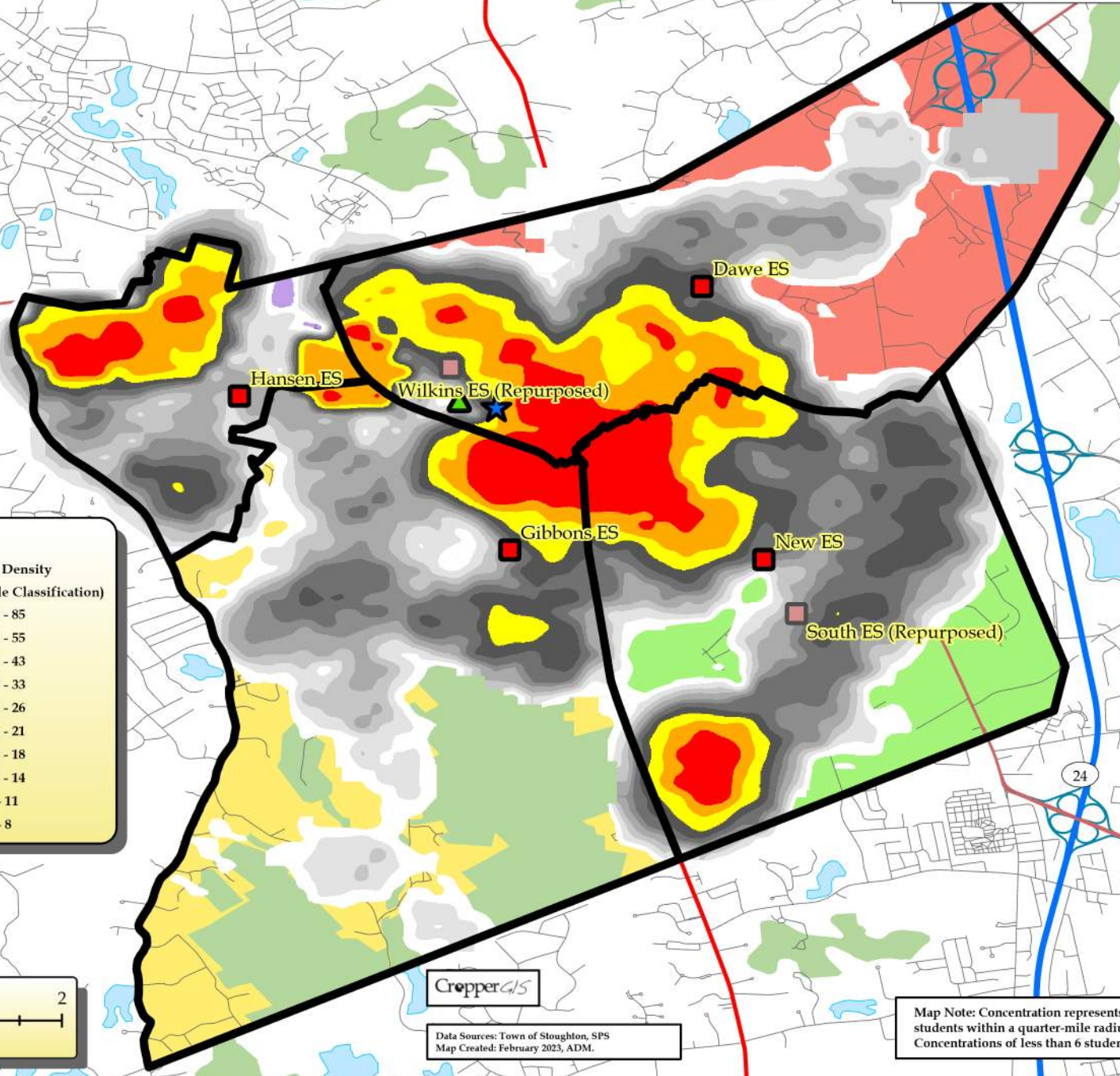
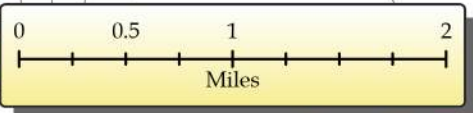
**CropperGIS**  
Data Sources: Town of Stoughton, SPS  
Map Created: February 2023, ADM.

Stoughton Public Schools, MA  
 ES DRAFT Preliminary Option 4  
 Student Density



**Legend**

<b>School Type</b>	<b>Student Density (Quantile Classification)</b>
Elementary School	56 - 85
Middle School	44 - 55
High School	34 - 43
Elementary School Option 4	27 - 33
<b>Option 4 Elementary School Zones</b>	22 - 26
Dawe	19 - 21
Gibbons	15 - 18
Hansen	12 - 14
South	9 - 11
	7 - 8



CropperGIS

Data Sources: Town of Stoughton, SPS  
 Map Created: February 2023, ADM.

Map Note: Concentration represents counts of students within a quarter-mile radius. Concentrations of less than 6 students are excluded.



# Stoughton Public Schools, MA Non-Transportation Zones



### Legend

**School Type**

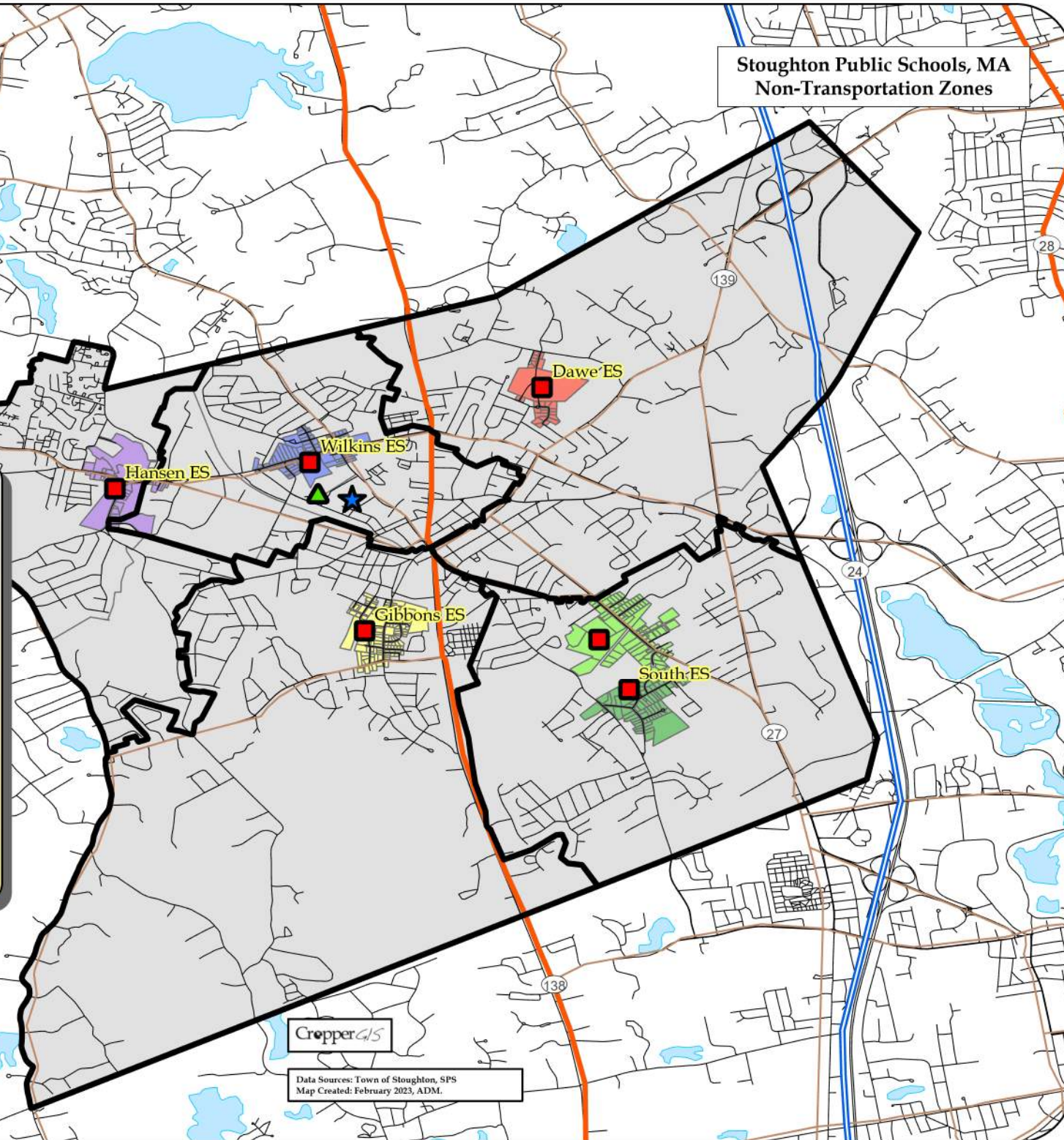
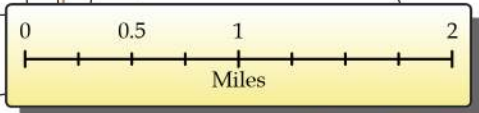
- Elementary School (Red square)
- Middle School (Green triangle)
- High School (Blue star)

**Elementary School Boundaries**

- Thick black outline

**WalkZone**

- Dawe ES (Red)
- Gibbons ES (Yellow)
- Hansen ES (Purple)
- South ES (Green)
- South ES (New) (Light Green)
- Wilkins ES (Blue)
- Remainder of Stoughton Public Schools (Grey)



CropperGIS

Data Sources: Town of Stoughton, SPS  
Map Created: February 2023, ADM.