



The New Elementary School | stoughton.ma

SCHOOL COMMITTEE MEETING *February 28, 2023*

VERTEX[®]

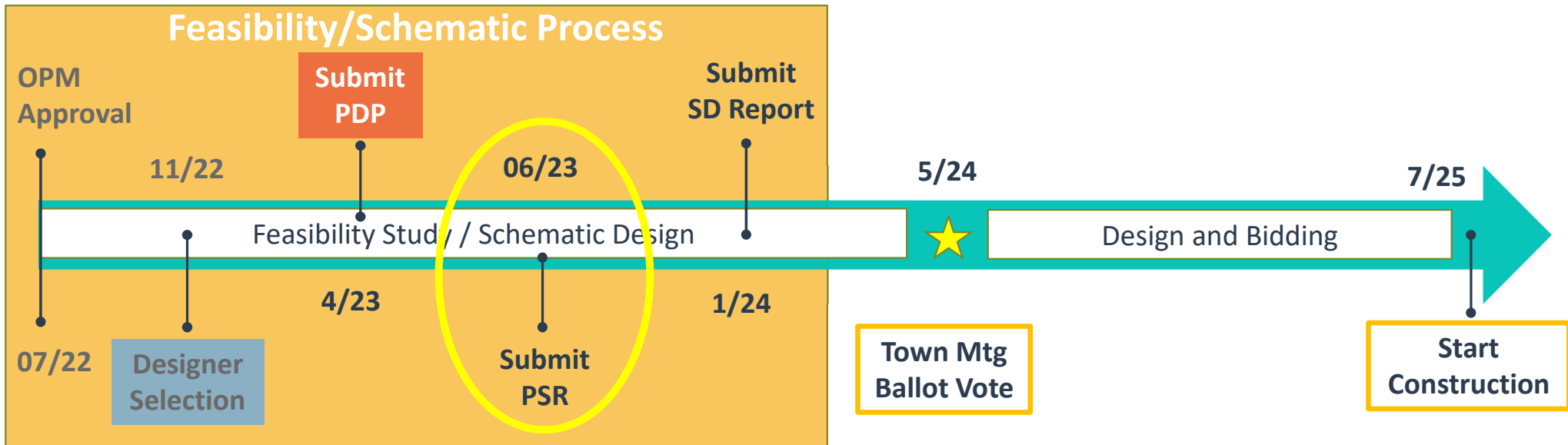
DRA

February 28, 2023

- PDP Update – Process & Key Dates
- Expectations of School Committee in the Future
- Visioning – Education Plan Update
- Preliminary Concepts and Ideas
- Redistricting

PROJECT timeline

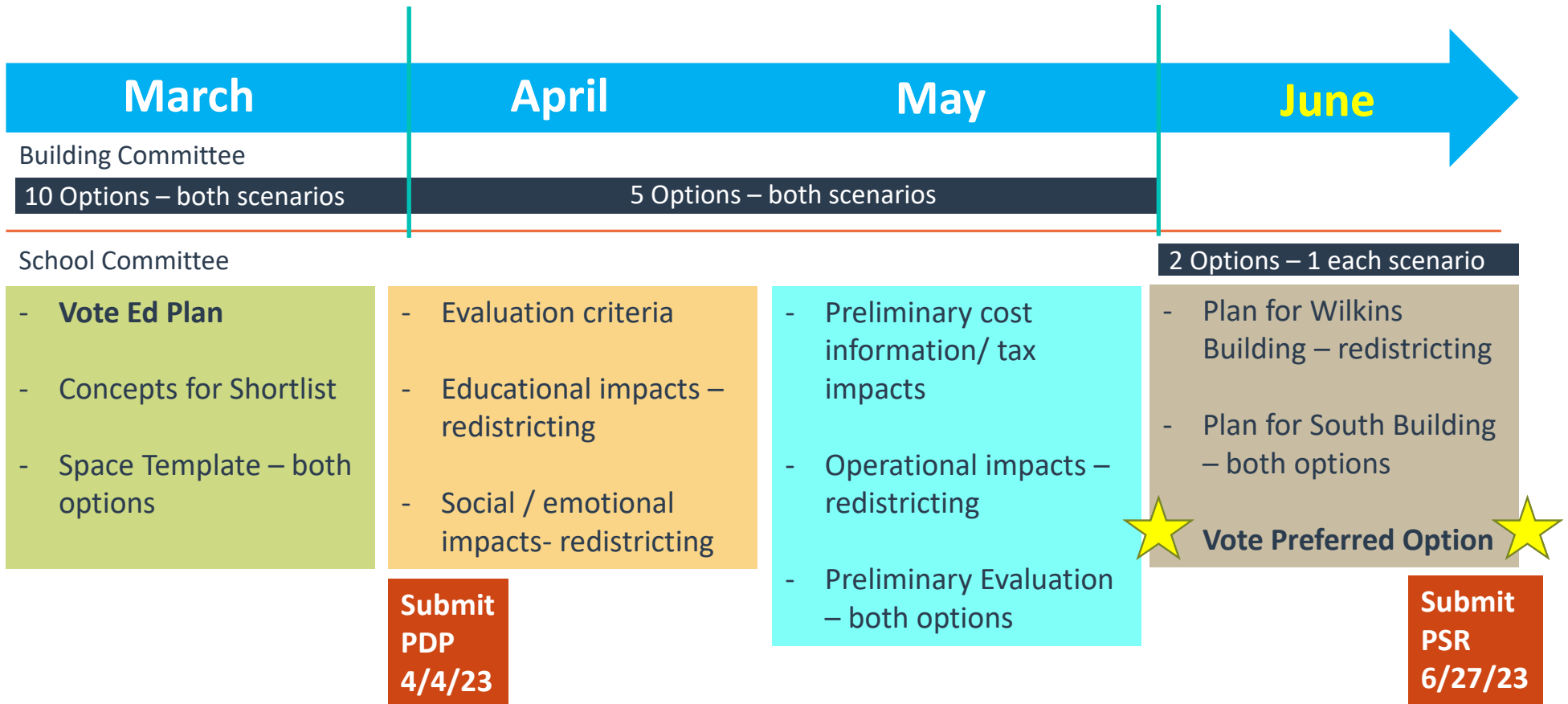
Design Timeline – Aligned with MSBA



PDP: Preliminary Design Plan | **PSR:** Preferred Schematic Report | **SD:** Schematic Design Report

- Aligned with MSBA Board Meetings and Town Ballot

School Committee Mtgs – New Elementary School





PDP progress

- Existing Conditions Assessment
- Visioning & Educational Planning
- Preliminary Options Assessment

ongoing tasks

- Working Group Meetings
- School Building Committee Meetings
- Community Forums
- Evaluating Site Options



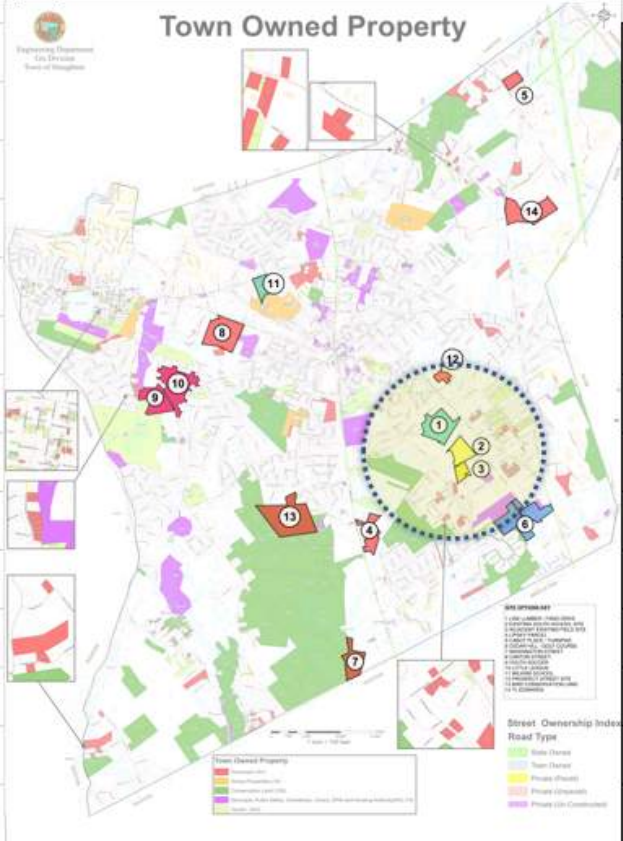
VERTEX[®]

DRA

site options matrix

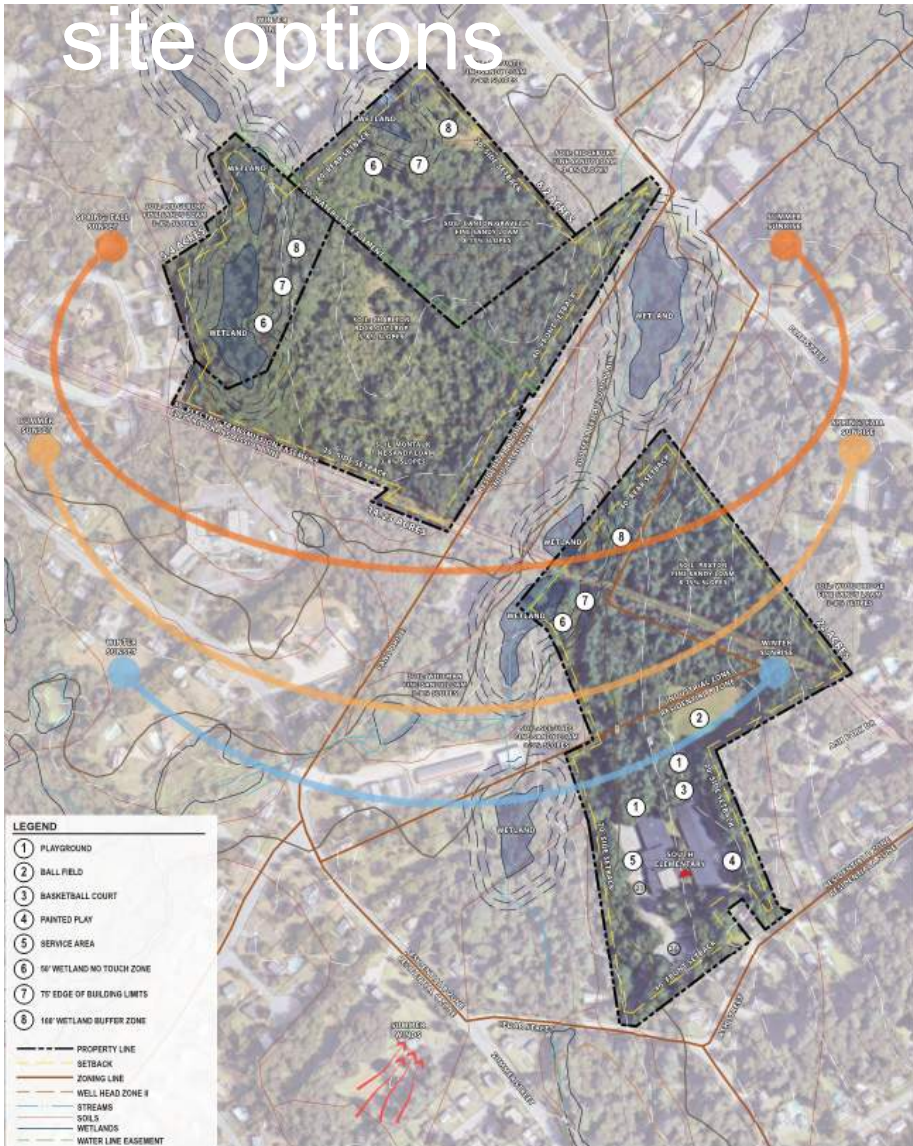


SITE SELECTION MATRIX
Spring 2023



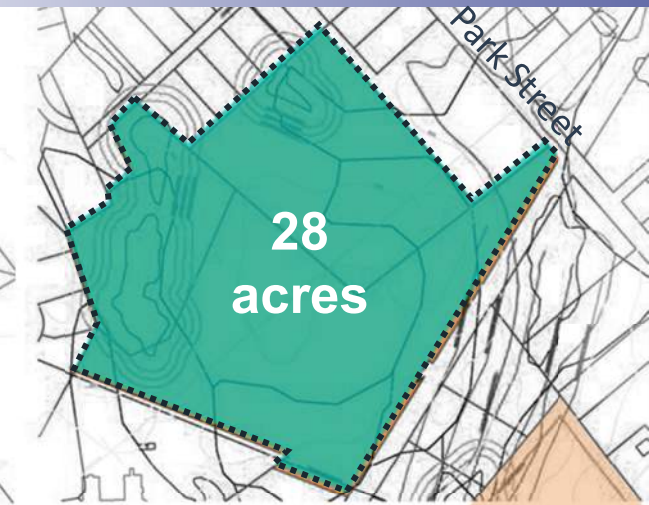
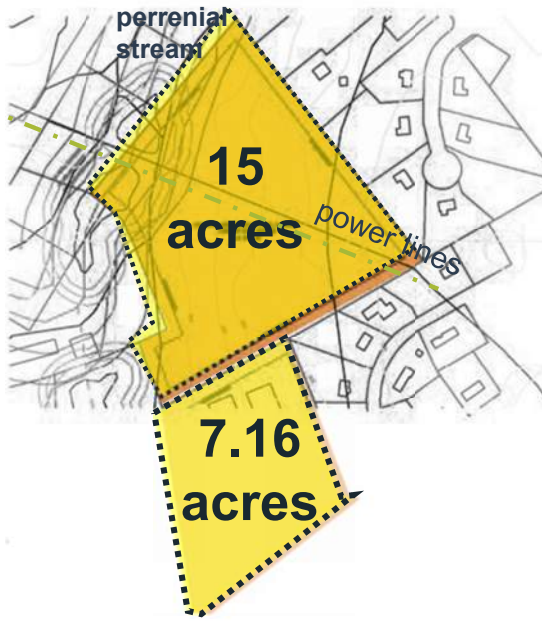
	SITE	SIZE	OWNER	LOCATION	ACCESS	BUILDABLE AREA	OTHER COMMENTS
1	LINE LUMBER / FANO DRIVE	27 ACRES				26.33 ACRES	MULTIPLE ACCESS POINTS
2	ADJACENT EXISTING FIELD SITE	7 ACRES					LEDGE, CHALLENGING TOPOGRAPHY; NO ROOM FOR SITE CIRCULATION-EXPANSION; PHASED PROJECT AND CHALLENGING ACCESS (ASSUMES COMBINED SITES 2 & 3)
3	EXISTING SOUTH SCHOOL SITE	15 ACRES					CHALLENGING TOPOGRAPHY & BISECTED BY POWER LINES; PHASED PROJECT AND CHALLENGING ACCESS (ASSUMES COMBINED SITES 2 & 3)
3A	COMBINED EXISTING SITES (2+3)	22					CHALLENGING TOPOGRAPHY & BISECTED BY POWER LINES; PHASED PROJECT AND CHALLENGING ACCESS (ASSUMES COMBINED SITES 2 & 3)
4	LIPSKY PARCEL	23.7 ACRES				2.86 ACRES	SMALL DEVELOPABLE AREA
5	CABOT PLACE / TURNPIKE	14.53 ACRES				10.5 ACRES	EDGE OF TOWN; DENSE RESIDENTIAL
6	CEDAR HILL / GOLF COURSE	42.49 ACRES				38.7 ACRES	LAND IS DIVIDED, ALTERNATE LOCATION FOR GOLF COURSE WOULD BE REQUIRED
7	WASHINGTON STREET	19.3 ACRES				8.8 ACRES	EDGE OF TOWN; SOUTH RAIL CORRIDOR (DOUBLE TRACK)
8	CANTON STREET	25.03 ACRES				19.14 ACRES	DEVELOPABLE AREA DIVIDED IN HALF; CHEMICAL PLOOM
9	YOUTH SOCCER	24.5 ACRES				18.2 ACRES	FORMER LANDFILL; FIELDS ARE NEEDED FOR COMMUNITY USE
10	LITTLE LEAGUE	26.55 ACRES				26.55 ACRES	FIELDS ARE NEEDED FOR COMMUNITY USE
11	WILKINS SCHOOL	11.6 ACRES					LANDLOCKED - NO ROOM TO EXPAND FOR SITE AMENITIES, ADDITION
12	PROSPECT STREET SITE	4.79 ACRES					TOO SMALL; MAJORITY OF AREA IS WETLANDS AND BUFFER ZONES
13	BIRD CONSERVATION LAND	52.5 ACRES				33.5 ACRES	CONSERVATION RESTRICTION; DIVIDED DEVELOPABLE LAND
14	TL EDWARDS	31.83 ACRES				28.2 ACRES	ADJACENT TO ASPHALT PLANT; LEDGE

site options



challenging

best



VERTEX

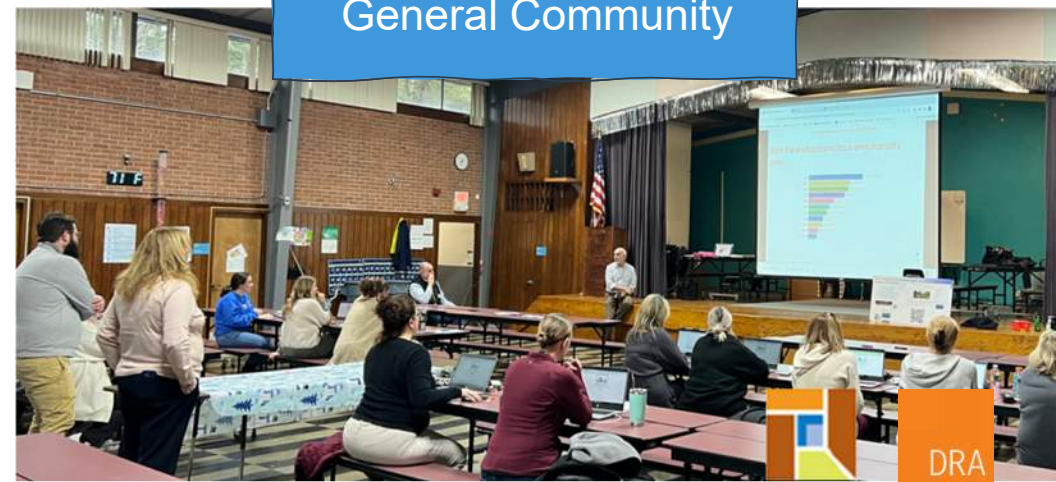
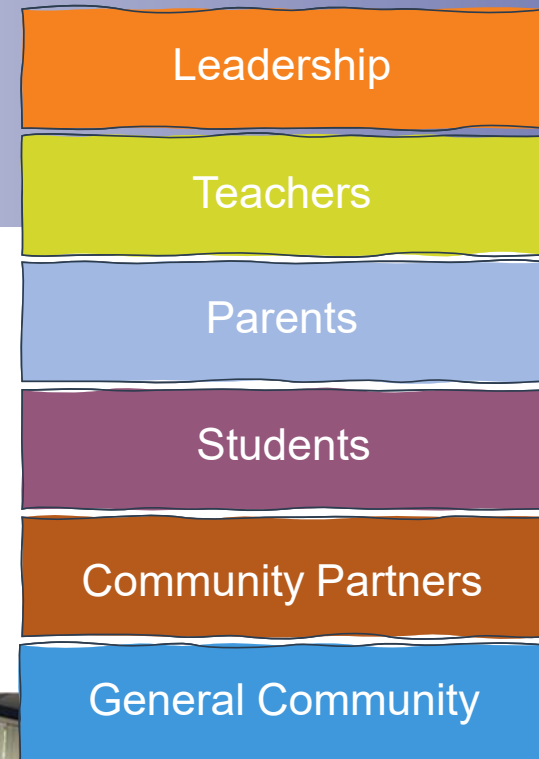
DRA

visioning

focus areas and stakeholders

1. Educational Practices and Priorities
2. Architectural Possibilities and Priorities
3. Guiding Principles and Drivers
4. Design Patterns
5. Blue-Sky Ideas
6. Key Adjacencies
7. Community Talking Points - *Redistricting*

- Kick-Off Educational Leadership Workshop
- Educational Visioning Workshop One
- Educational Visioning Workshop Two
- Educational Visioning Workshop Three
- Faculty Meeting

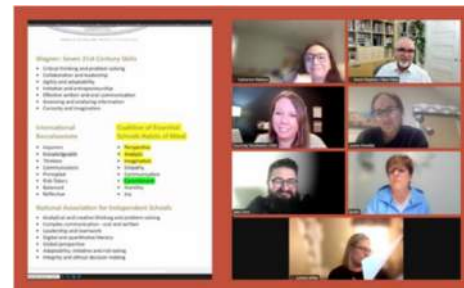
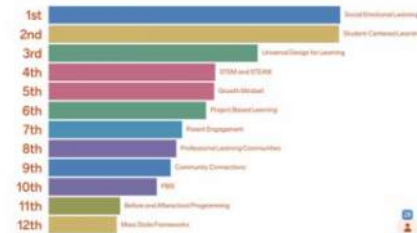


educational plan highlights

- The **Educational Plan** encompasses vision for future education in Stoughton and is applicable for any of the 3 options
- The Vision came from feedback garnered from multiple sessions including **community members**, **staff** and **families**



Rank these educational focus areas in priority order.



educational plan

design pattern highlights

Upper and lower school with distinct grade level neighborhoods

Use of **outdoor spaces** & utilization of **building as teacher**

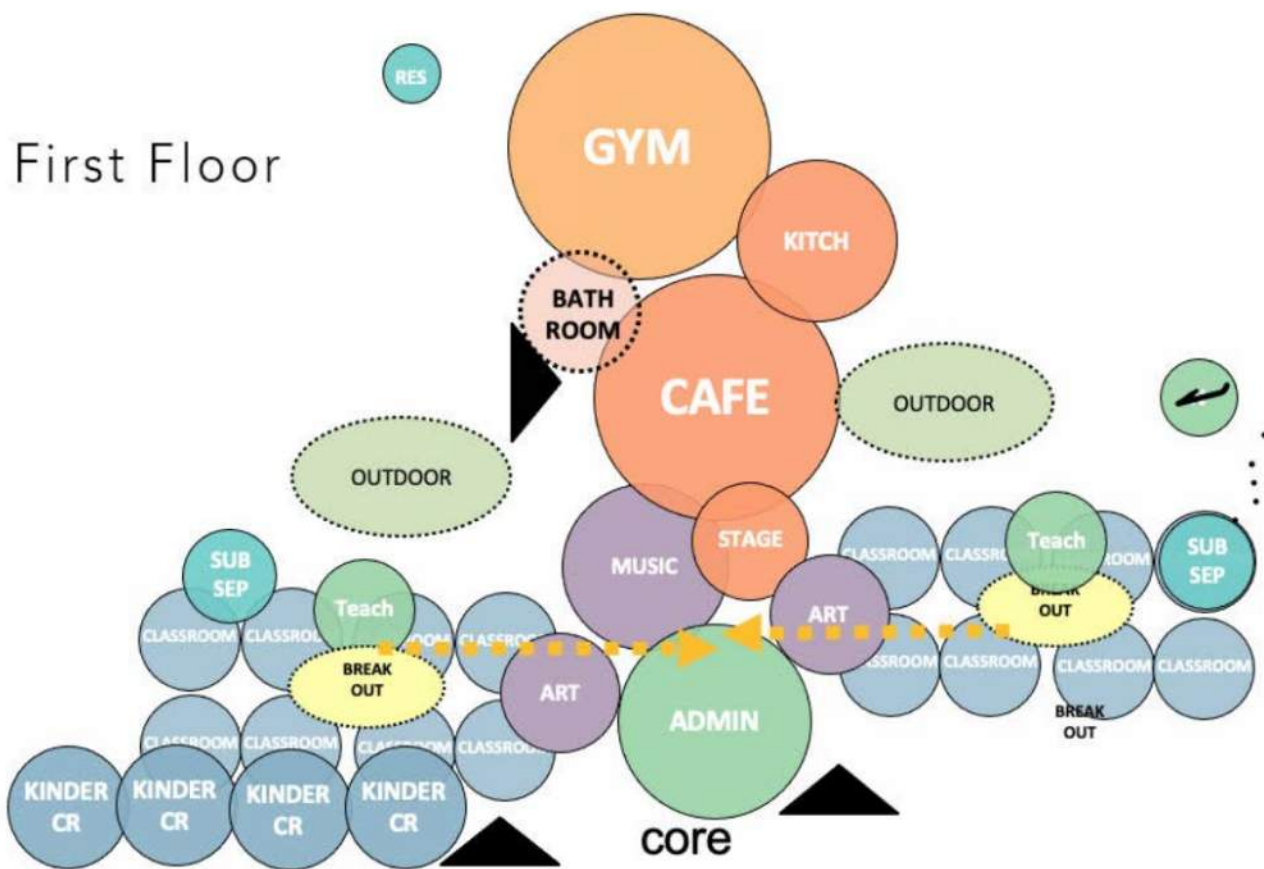
Focus on building **community areas** secured separately from classroom areas
(assembly spaces such as cafe, gym, etc.)

Abundance of **authentic collaboration** and **meeting spaces**

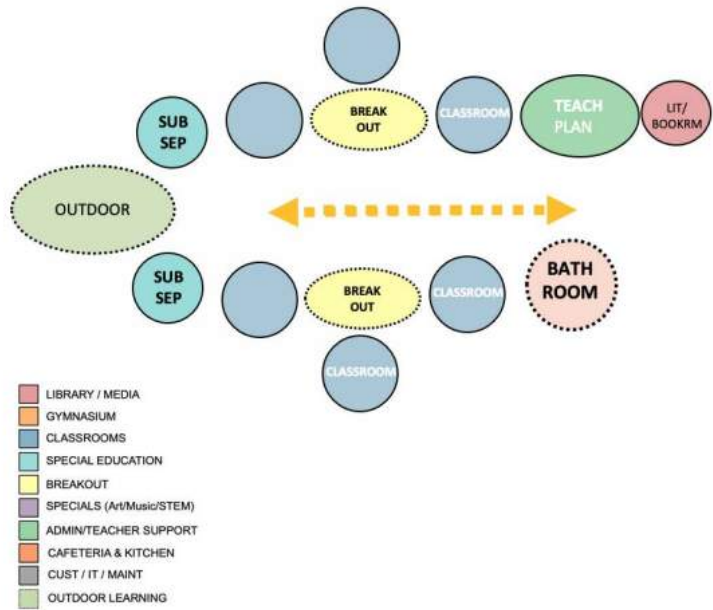
Focus on **centralized learning commons** with **STEM** spaces above



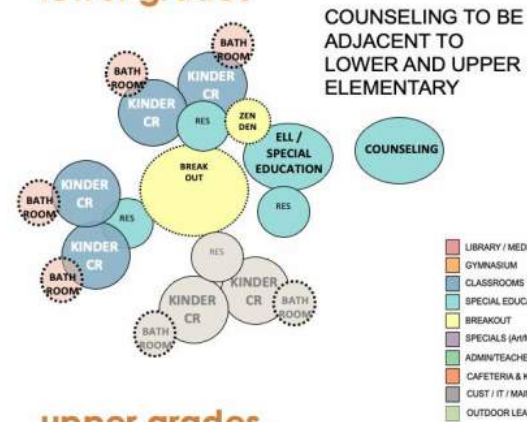
whole school diagram



neighborhood diagrams

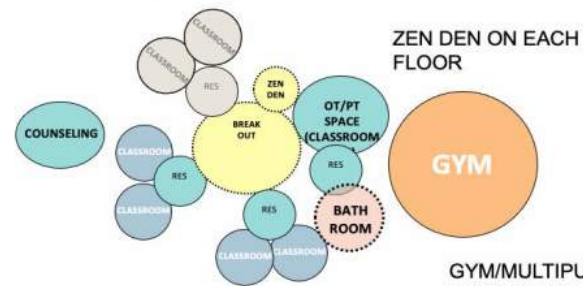


lower grades



COUNSELING TO BE ADJACENT TO LOWER AND UPPER ELEMENTARY

upper grades



ZEN DEN ON EACH FLOOR

- 4 classrooms ideal, 6 classrooms if needed based on enrollment
- Bathrooms each neighborhood (for students and staff)
- Ideal for counseling to be in lower and upper elementary
- Zen den each floor
- Indoor play area

GYM/MULTIPURPOSE PROXIMITY TO OT/PT A PLUS FOR UTILIZING LARGER AREA



MSBA Space Summary : 225 enrollment

Based on the SPS Educational Plan



Proposed Space Summary- Elementary Schools

225

Date: Enter Date

MSBA G
(refer to MSBA Educational Progr

South Elementary	Existing Conditions			PROPOSED									MSBA G (refer to MSBA Educational Progr			
	ROOM TYPE	ROOM NFA ¹	# OF RMS	area totals	Existing to Remain/Renovated			New			Total			ROOM NFA ¹	# OF RMS	area totals
					ROOM NFA ¹	# OF RMS	area totals	ROOM NFA ¹	# OF RMS	area totals	ROOM NFA ¹	# OF RMS	area totals			
CORE ACADEMIC SPACES				17,000			0			16,800		18	16,800		10	10,000
<i>(List classrooms of different sizes separately)</i>																
Pre-Kindergarten w/ toilet														1,200		
Kindergarten w/ toilet								1,100	3	3,300		3	3,300	1,200	2	2,400
General Classrooms - Grade 1-5	850	20		17,000				900	15	13,500		15	13,500	950	8	7,600
SPECIAL EDUCATION				1,190			0		5,400			5,400			3,020	
<i>(List rooms of different sizes separately)</i>																
Self-Contained SPED Language-based	850	1		850				900	3	2,700		3	2,700	950	2	1,900
Self-Contained SPED - toilet	0			0				60	3	180		3	180	60	2	120
English Language Learners	0			0				900	0	0		0	0			
Resource Room- Learning Center	0			0				450	1	450		1	450	500	1	500
Pullout space	0			0				100	3	300		3	300			
Small Group Room / Reading	170	1		170				450	1	450		1	450	500	1	500
Speech & Language Room	170	1		170				150	1	150		1	150			
Calming/Descalation Rooms								120	1	120		1	120			
OT/PT suite- Therapy space & office								400	1	400		1	400			
SpEd Office w/conference								250	1	250		1	250			
Adjustment Counselor Office								150	1	150		1	150			
SpEd Conference								250	1	250		1	250			
ART & MUSIC				0			0		2,500			2,500			2,500	
Art Classroom - 25 seats	0							1,000	1	1,000		1	1,000	1,000	1	1,000
Art Workroom w/ Storage & kiln	0							150	1	150		1	150	150	1	150
Music Classroom (Large Group) 25-50 seats	0							1,200	1	1,200		1	1,200	1,200	1	1,200

DRA

MSBA Space Summary : 515 enrollment

Based on the SPS Educational Plan



Proposed Space Summary- Elementary Schools

515

Date: Enter Date En

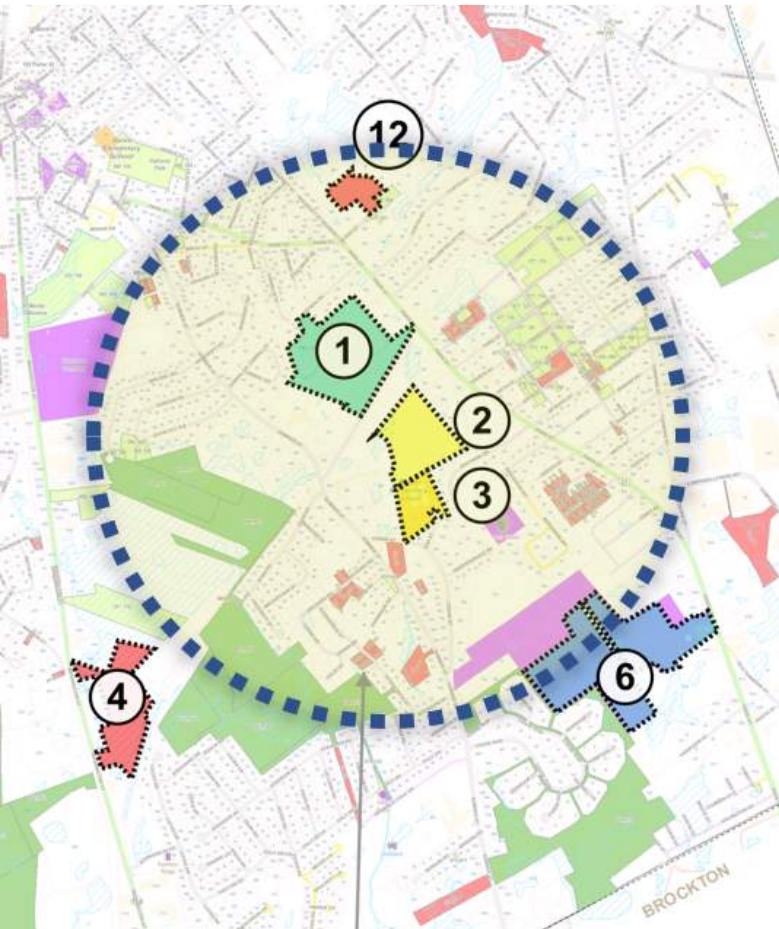
MSBA Guid
(refer to MSBA Educational Program

South Elementary	Existing Conditions			PROPOSED						MSBA Guid					
	ROOM NFA ¹	# OF RMS	area totals	Existing to Remain/Renovated			New			Total			(refer to MSBA Educational Program		
ROOM TYPE	ROOM NFA ¹	# OF RMS	area totals	ROOM NFA ¹	# OF RMS	area totals	ROOM NFA ¹	# OF RMS	area totals	ROOM NFA ¹	# OF RMS	area totals	ROOM NFA ¹	# OF RMS	area totals
CORE ACADEMIC SPACES			0			0			29,100			29,100		22	21,900
<i>(List classrooms of different sizes separately)</i>															
Pre-Kindergarten w/ toilet													1,200		-
Kindergarten w/ toilet							1,100	6	6,600				1,200	4	4,800
General Classrooms - Grade 1-5							900	25	22,500				950	18	17,100
SPECIAL EDUCATION			0			0			9,720			9,720			6,040
<i>(List rooms of different sizes separately)</i>															
Self-Contained SPED Language-based							900	3	2,700				950	4	3,800
Self-Contained SPED - toilet							60	3	180				60	4	240
English Language Learners							900	3	2,700						
Resource Room- Learning Center							450	3	1,350				500	3	1,500
Pullout space							100	6	600						
Small Group Room / Reading							450	1	450				500	1	500
Speech & Language Room							150	2	300						
Calming/Descalation Rooms							120	2	240						
OT/PT suite- Therapy space & office							200	2	400						
SpEd Office w/conference							250	1	250						
Adjustment Counselor Office							150	2	300						
SpEd Conference							250	1	250						
ART & MUSIC			0			0			2,575			2,575			2,575
Art Classroom - 25 seats							1,000	1	1,000				1,000	1	1,000
Art Workroom w/ Storage & kiln							150	1	150				150	1	150
Music Classroom (Large Group - 25-50 seats)							1,200	1	1,200				1,200	1	1,200

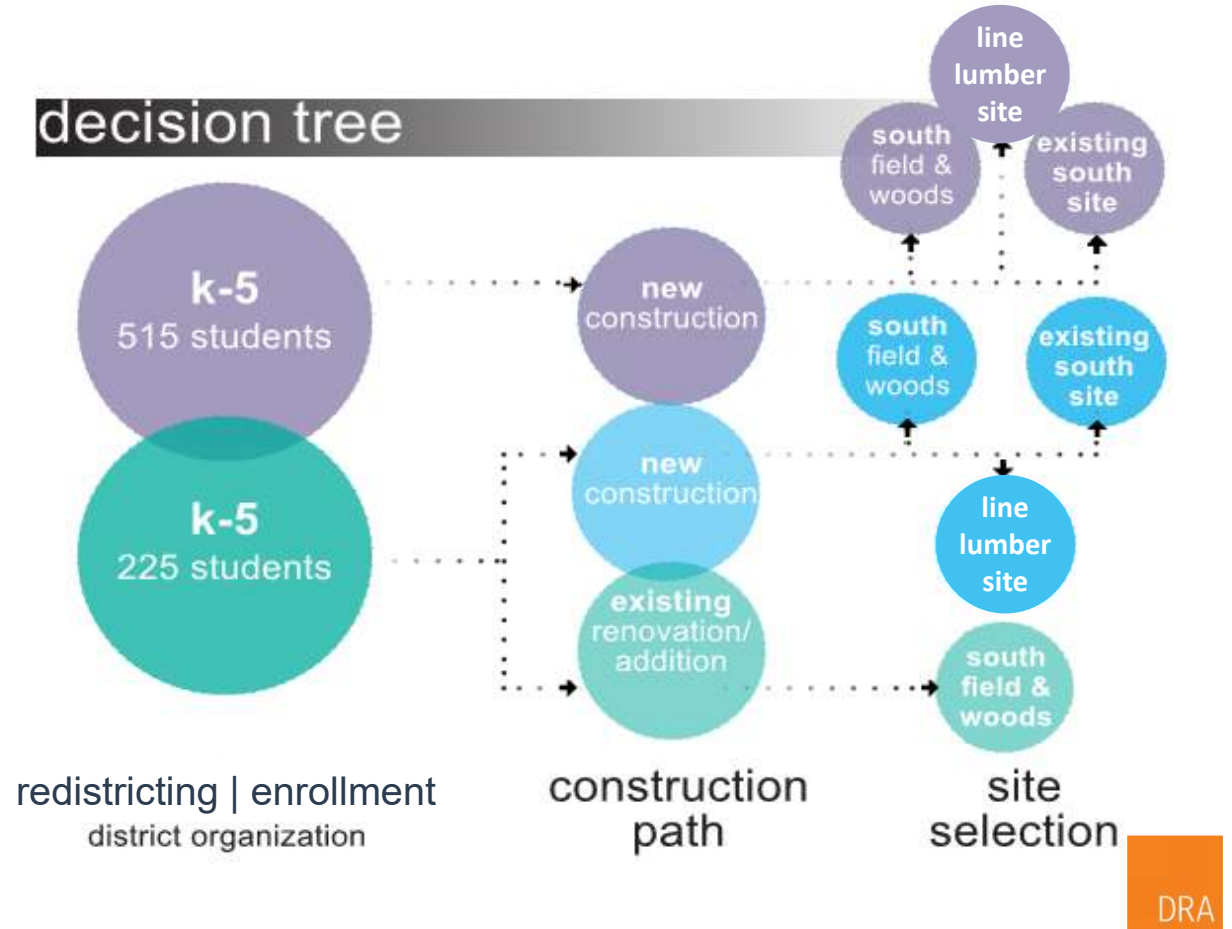
Paade 1

DR A

options & enrollment



decision tree

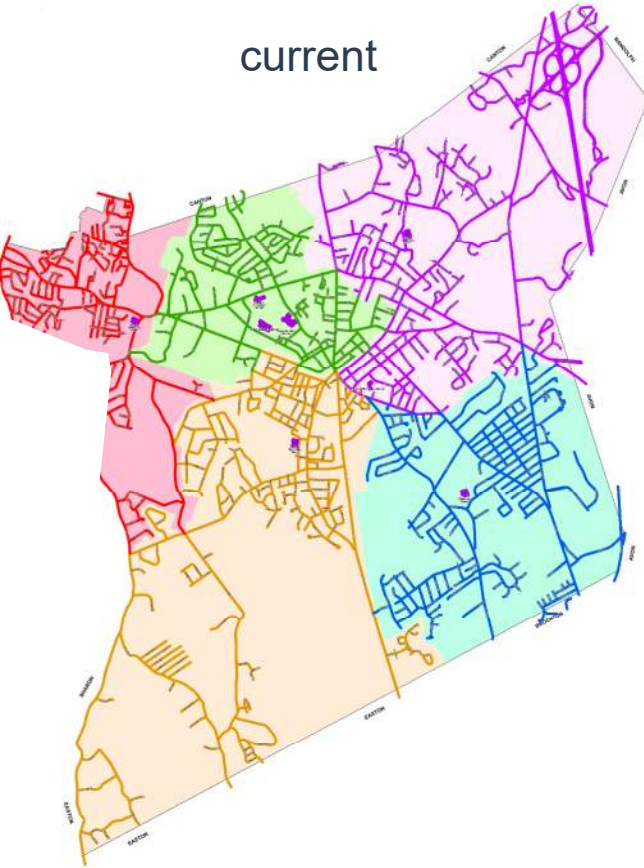


redistricting | enrollment

key considerations

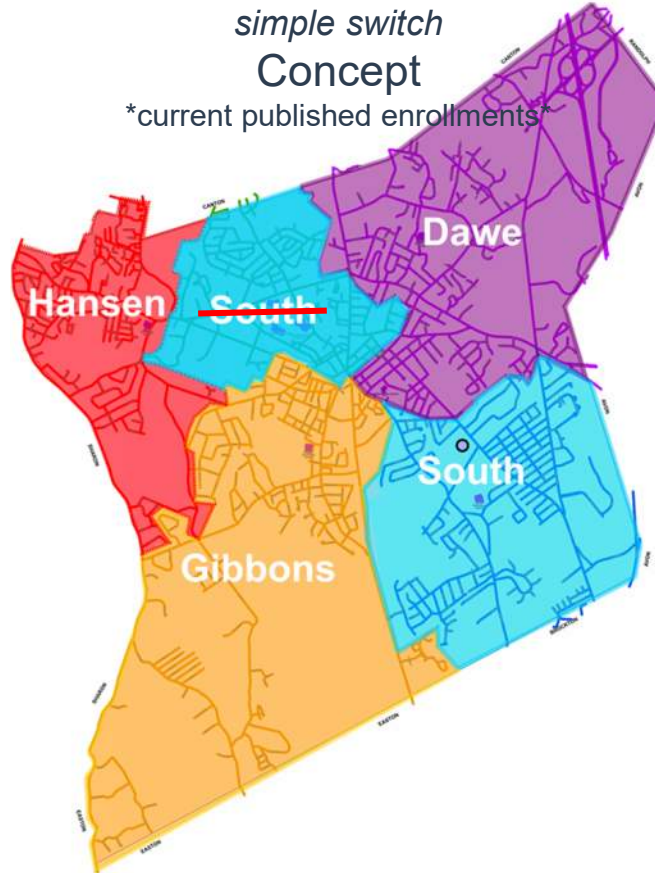


current

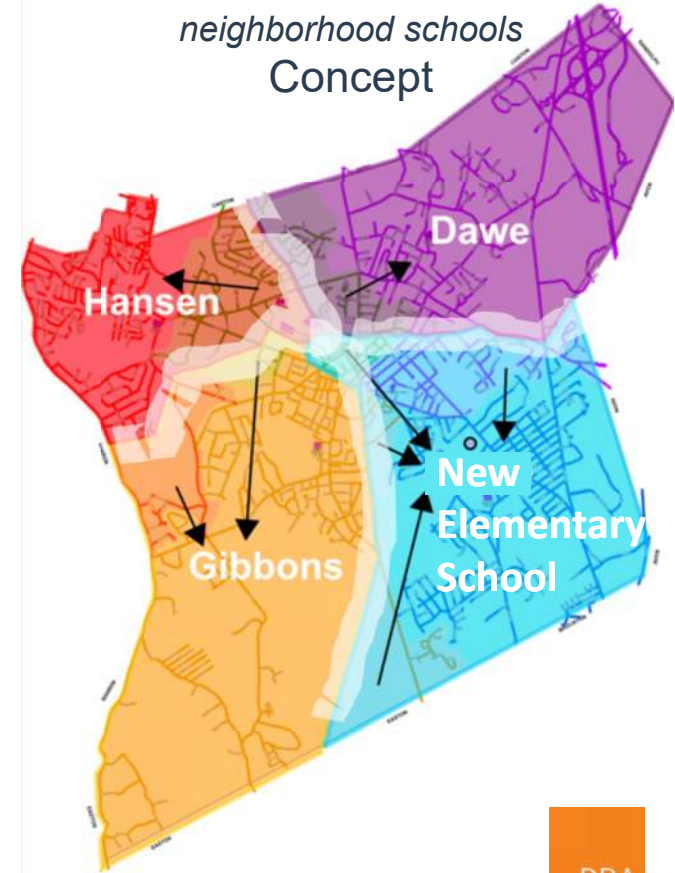


simple switch
Concept

current published enrollments



neighborhood schools
Concept



DRA

Thank You!



Thank You!