



SOUTH elementary school | stoughton.ma

SCHOOL BUILDING COMMITTEE MEETING December 6, 2022

Agenda

December 6, 2022

- Public Participation
- Approve Minutes
- Approve Designer Contract
- SPS Goals for Elementary School Program and Facilities
- Educational Planning and Visioning Process
- Schedule / Work Plan
- Public Outreach
- New Business

DRA Contract

- MSBA Standard Contract
 - Feasibility Phase – Submission of Preferred Schematic (PSR) to MSBA (June 2023) - \$210,000
 - Schematic Design – Submission to MSBA and Town for Approval (December 2023) - \$265,000
- **Feasibility Appropriation - \$750,000**

Item	Amount	Comments
OPM	\$250,000	Includes estimating
Designer	\$475,000	Includes limited site/environmental
Other/Contingency	\$ 25,000	

DRA Contract

- Additional Scope Possibly Needed after PSR (June 2023)
 - Redistricting Consultant – Current scope only includes data gathering and limited consultation. If consolidation option is chosen, more work would be needed to develop possible district configurations.
 - Traffic – Current scope includes a Traffic Assessment Report based on existing information. Depending on final option, more traffic engineering would likely be required.
 - Geotechnical – Current scope includes one (1) day of borings and report – sufficient to locate building. Additional work needed to better quantify risk and cost.
 - Survey – Current scope includes use of existing GIS information; more detailed survey will be needed once final option is determined.
 - HazMat – Current scope will incorporate school AHERA report. Depending on final disposition of existing South St. school, additional survey work may be needed.

Additional scope needed may range from \$155,000 to \$220,000 depending on selected option.



DRA

Jim Barrett, AIA
Principal in Charge
LEED AP^{BD+C}



DRA

Courtney Southwick
Project Manager-Associate
LEED AP^{BD+C} | WELL AP



DRA

Angel Khazadian, AIA
Project Architect – Associate
LEED Green Associate



DRA

Ann Marie Procopio
Interior Designer IIDA



Matthew Cropper
President, Planning Analyst



David Stephen, AIA
Educational Planner, M Ed



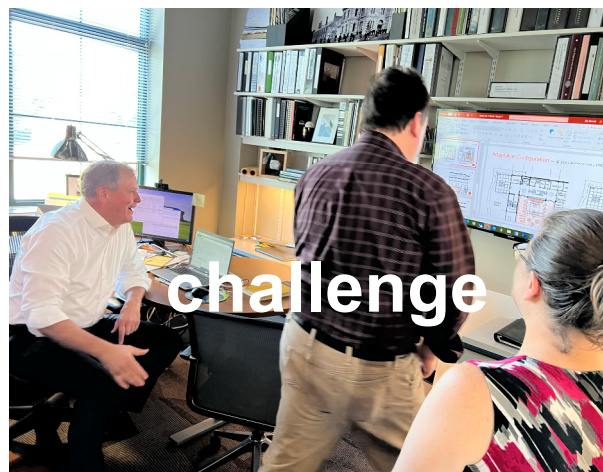
Dr. Agnes Vorbrodt, RA
Architect, LEED AP, WELL AP



David Warner, PLA
Warner Larson
Landscape Architects



Wayne Mattson, PE
President – Mechanical
Engineer



Town Leadership



Historic Lucius Clapp



STOUGHTON | PRIDE



COMMUNITY OUTREACH |



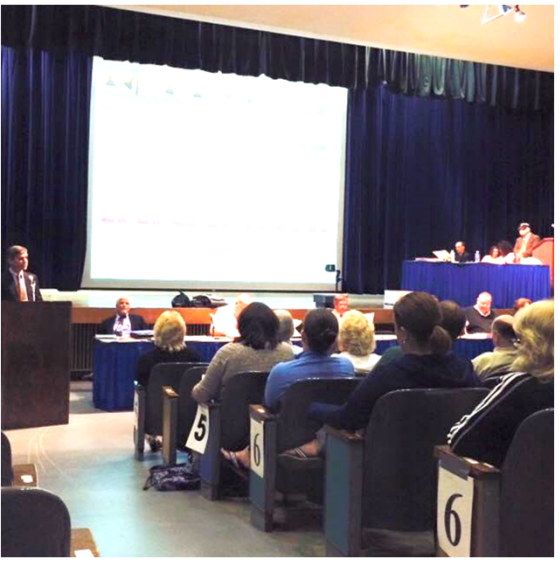
hybrid sessions

Stoughton Elementary Schools Walk Together



Enrichment Together





Visioning

Things to consider...

1 How many workshops do we want to have?

2 Community Meetings

3 Scheduling Initial Meeting with Leadership

4 Hybrid versus In-Person Meetings
Use of Polling Software

5 Stakeholder Groups



Visioning

Meetings to consider...



- Kick-Off Educational Leadership Workshop
- Educational Visioning Workshop One
- Educational Visioning Workshop Two
- Educational Visioning Workshop Three

- Community/Whole Faculty Meetings
- Educational Plan Editing and Assistance



community | participation

checklist

1 assemble the right building committee ✓

2 start early with community participation

3 be transparent

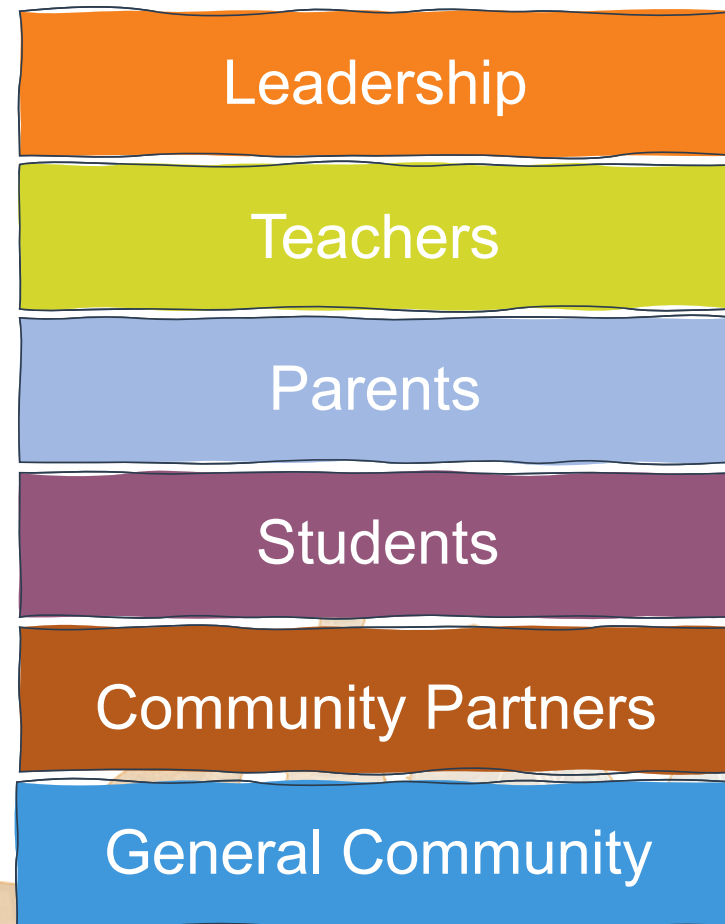
4 communicate the need

5 seek meaningful input

visioning

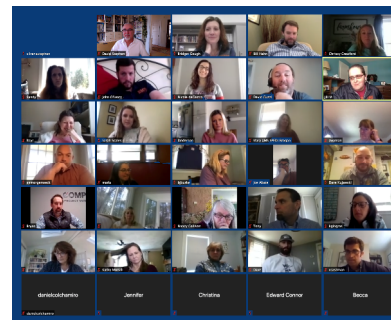
focus areas and stakeholders

1. Educational Practices and Priorities
2. Architectural Possibilities and Priorities
3. Guiding Principles and Drivers
4. Design Patterns
5. Blue-Sky Ideas
6. Key Adjacencies
7. Community Talking Points - *Redistricting*



virtual and/or in-person VISIONING

- Shorter Workshops
- Highly Interactive
- Facilitated Breakout Group Discussions
- Google Docs Info Collection
- Interactive Software to Enable Real-Time Feedback
- Hands-On Activities



Go to www.menti.com and use the code 58 74 04

What strikes you? Is anything missing?

Collaboration, communication, and creativity are very important.	Social emotional learning is well described. Inquiry-based learning should be a focus.	We don't mention the cultivation of reading skills.
Shows value of whole student	I liked how high up SEL is. I wonder how a building's design supports that.	It is a great list! Would "inclusivity" be under one of these?
I like that there is a balance of emphasis on global awareness and responsibility as developing the individual person.	It's a comprehensive list.	Great start. I wonder if there should be More focus on math and science. Especially with potential of new labs and spaces.
	Good overview of what we value.	

Press ENTER to pose a vote

Go to www.menti.com and use the code 26 91 47

What modes of teaching and learning do you use most frequently?

Mode	Frequency
Direct Instruction - Teacher-Centered	147
Self-Directed Learning	144
Blended Learning	138
Project-Based Learning	135
Flipped Classroom	132
Hybrid Learning	129
Collaborative Learning	126
Student Presentations	123
Learning Stations	120
Self-Directed Learning with Teacher	117
Project-Based Learning	114
Peer Learning	111
Classroom Management	108
Personalized Learning	105
Blended Learning	102
Self-Directed Learning	99
Blended Learning	96
Self-Directed Learning	93
Blended Learning	90
Self-Directed Learning	87
Blended Learning	84
Self-Directed Learning	81
Blended Learning	78
Self-Directed Learning	75
Blended Learning	72
Self-Directed Learning	69
Blended Learning	66
Self-Directed Learning	63
Blended Learning	60
Self-Directed Learning	57
Blended Learning	54
Self-Directed Learning	51
Blended Learning	48
Self-Directed Learning	45
Blended Learning	42
Self-Directed Learning	39
Blended Learning	36
Self-Directed Learning	33
Blended Learning	30
Self-Directed Learning	27
Blended Learning	24
Self-Directed Learning	21
Blended Learning	18
Self-Directed Learning	15
Blended Learning	12
Self-Directed Learning	9
Blended Learning	6
Self-Directed Learning	3
Blended Learning	0





SOUTH | elementary school

stoughton.ma

Preliminary Design Program (PDP)

- **Educational Program**
- Initial Space Summary
- Evaluation of Existing Conditions
- Site Development Requirements
- **Preliminary Evaluation of Alternatives**

Preferred Schematic Report

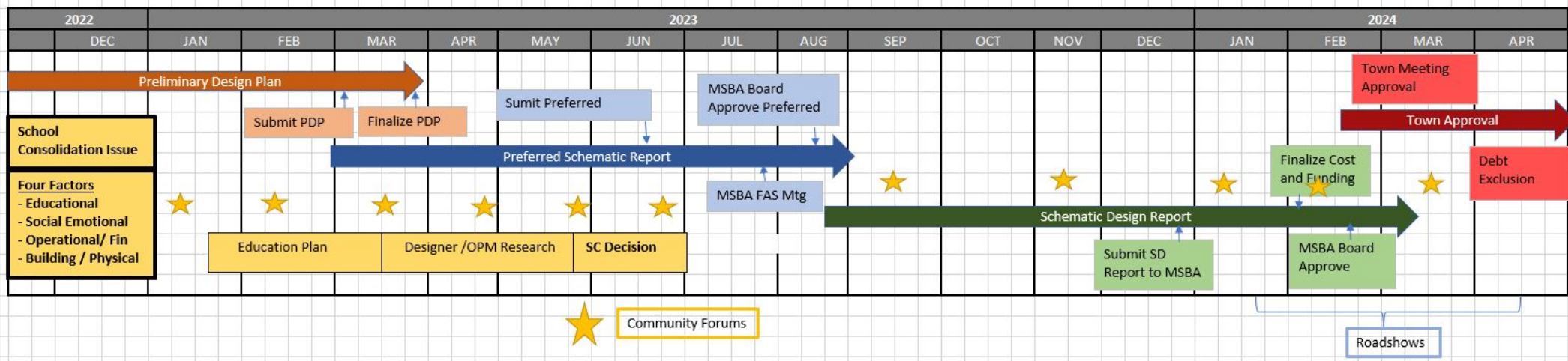
- Evaluation of Existing Conditions
- Final Evaluation of Alternatives
- **Preferred Solution**
- **Consolidation Decision**

Schematic Design Report

- **Schematic Design (30%)**
- Final Design Program
- Traffic Analysis
- Environmental Assessment
- Geotechnical
- Code Analysis
- Sustainability
- ADA / MAAB Analysis
- Room Data Sheets
- Project Delivery System
- Construction Estimates
- **Total Project Budget**
- **Maximum Reimbursement**
- **Project Schedule**

Work Plan

Town of Stoughton
South Elementary School



SES Working Group: Vertex, DRA, SPS Reps, SBC Rep – Every other week
SES SBC: - Monthly – Date?

SBC Responsibility

Deliverable	Review/ Comment	SBC Vote	Comment
MSBA Submissions		X	SC & BOS vote (for PSR & SD)
Design Alternatives	X		
Education Plan / Space Summary/ Shortlist of Options = PDP Report	X		SC Vote
Evaluation Criteria		X	
Sustainability Approach	X		
Instructional Technology	X		
Design Elements	X		
Community Outreach	X		
School Consolidation	X		SC Vote
Final Preferred Option = PSR Report		X	SC & BOS vote
Project Budget / Schedule/ Scope = SD Report		X	SC & BOS vote

COMMUNICATION PLAN

Communication Type	Type	Venue		Frequency	Lead Responsibility		Time Frame
		Presented At	Repository/Archive		Develop	Post	
Building Committee Mtgs VIDEO	Minutes	SBC	Project Website Cable TV	Monthly	Compass	SPS	Length of Project
Community Forums VIDEO	Presentations, Audience Participation	Multiple Venues	Project Website Cable TV	As needed, target every other month	Designer	SPS	Length of Project
Other Town Boards	Presentations, Audience Participation	Multiple Venues	Project Website	As needed, target every other month	Designer	SPS	Design Phase
Design Presentations	Presentation	SBC	Project Website	As developed	Designer	CPM/ SPS	Design Phase
FAQ's	Citizen Generated		Project Website	As developed	Compass/ SBC Chair	CPM/ SPS	Design Phase
Budget Updates	Report	SBC	Project Website	Monthly	Compass	CPM/ SPS	Length of Project
Schedules / Timeline	Report	SBC	Project Website	Monthly	Compass	CPM/ SPS	Length of Project
Roadshows	Presentation	Multiple Venues	Project Website	As needed	Designer	CPM/ SPS	End of SD, Town Approval Phase
Sustainability Updates	Presentation	SBC	Project Website	As needed	Designer	CPM/ SPS	Design Phase
Monthly PM Report/ Dashboard	Report	SBC	Project Website	Monthly	Designer	CPM/ SPS	Length of Project
Phasing Plans/ Construction Impacts	Presentation	SBC	Project Website	As developed	Designer / CPM	CPM/ SPS	Design Phase
Press Release	Press Release	Media Outlets	Project Website	As needed	CPM / SBC Chair	CPM/ SPS	Length of Project

First Community Forum

- Date? – (ASAP)
- Location?
- Televised?
- Topics?

Agenda RECAP

December 6, 2022

- Public Participation
- Approve Minutes
- Approve Designer Contract
- SPS Goals for Elementary School Program and Facilities
- Educational Planning and Visioning Process
- Schedule / Work Plan
- Public Outreach
- New Business