



SUPERINTENDENT MESSAGE

We are off to a great start at Winterset CSD, and we are looking forward to a great year. I wanted to take time this month to provide you with information about the special election that will take place on Tuesday, September 13th to extend the voter approved Physical Plant and Equipment Levy (PPEL). The current PPEL was put in place in 2014 when it passed during the last special election. The voted PPEL was put in place by the Iowa Legislature in the early 1990s as a locally generated funding stream that is used to support school district facilities and equipment. The school board can ask the voters to approve a maximum levy of \$1.34 per \$1,000 of assessed property valuation. The state law is quite specific as to what the funds can be used for. PPEL funds can be used for things such as roofing replacement and repair, masonry repairs, energy conservation improvements, concrete and asphalt repairs, school buses, technology, and other facility improvements. PPEL funds can NOT be used for salaries, benefits, textbooks, or

educational programs.



Hopefully, by now all of you have been able to visit the new and remodeled areas of our district that were completed in 2020 with the support of the latest bond issue. The buildings are in great shape and provide a welcoming safe environment for our students to learn each and every day. In order to keep the buildings looking and working effectively there are ongoing maintenance needs that the PPEL allows the district to address on an annual basis. The PPEL generates approximately \$850,000 annually to support the ongoing maintenance of our facilities, buses, equipment, and district technology needs. Once approved the board is able to allocate funds to support these projects on an annual basis based on the short and long term needs that arise.

SCHOOL PICTURE DATES

Elementary

Thursday, September 8th

Retakes: Oct. 27

Middle School

Retakes: October 14th

Junior High & High School

Wednesday, September 7th

Retakes: Oct. 5

The PPEL is not a new tax as it has been in place since 2014. Since the current levy was put in place in 2014 the district's overall tax rate has decreased from \$18.49 to \$16.47 per \$1,000 of assessed value; a decrease of \$1.52. The use of PPEL funds to support ongoing maintenance within a district is something that most districts in the state take advantage of and is supported by their local communities. All of the Raccoon River Conference schools have a voted PPEL in place as well as the surrounding districts of Earlham, I-35, Creston, Martensdale St. Mary, and Van Meter.

We are extremely grateful for the support our community has and continues to provide to our district as we

strive to ensure that our facilities continue to meet the needs of our students and community. Maintenance and facility improvements are an ongoing need for our district. We encourage you to vote to extend the PPEL for another 10 years on September 13, 2022. Polls are open from 7:00 AM - 8:00 PM. Please check the Madison County Auditor's page for your polling locations. If you have any questions about the voted PPEL please feel free to contact the Winterset Community School District's Administration Office at (515) 462-2718.

Yours in Service,

Justin M. Gross

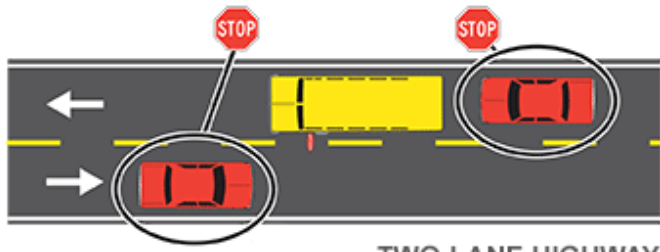
Superintendent

IOWA SCHOOL BUS SAFETY REQUIRED STOPPING FOR SCHOOL BUSES

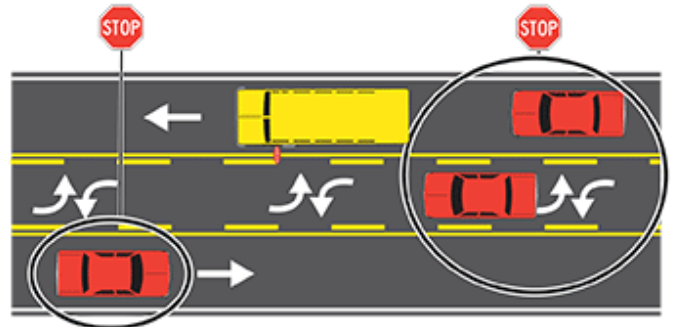
SCENARIO 1: YOU ARE TRAVELING ON A TWO- OR THREE-LANE ROAD

Approaching the bus from the rear: When you see flashing red or amber warning lights, you are not permitted to pass the school bus and should be prepared to stop. Stop behind the school bus when the school bus stops and the stop arm is extended. Stop no closer than 15 feet from the rear of the bus, and remain stopped until the stop arm is retracted and school bus starts moving again. Proceed with caution.

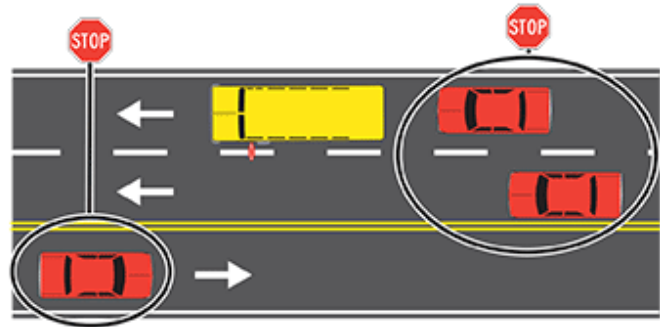
Meeting the bus from the front: When you see amber warning lights flashing you must slow your vehicle to no more than 20 mph and be prepared to stop. Stop in front of the school bus when the school bus stops and its stop arm is extended. Remain stopped until the stop arm is retracted. Proceed with caution.



TWO-LANE HIGHWAY



TWO-LANE HIGHWAY WITH CENTER TURN LANE

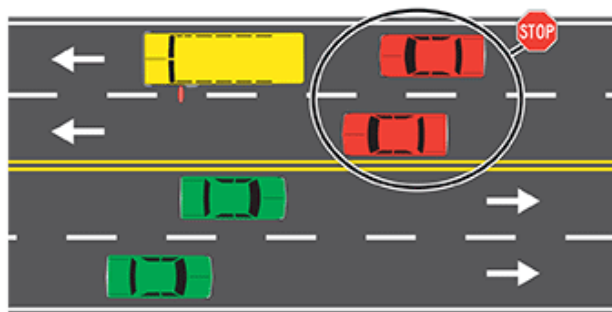


THREE-LANE HIGHWAY

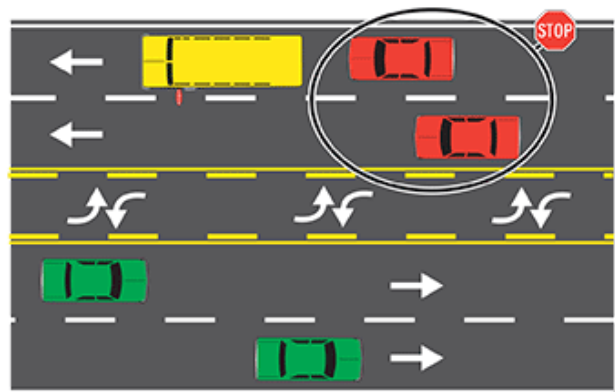
SCENARIO 2: YOU ARE TRAVELING ON A ROAD WITH TWO OR MORE LANES IN EACH DIRECTION

Approaching the bus from the rear: When approaching from the rear, the rules are the same as for a two- or three- lane road. When you see flashing red or amber warning lights, you are not permitted to pass the school bus and should be prepared to stop. Stop behind the school bus when the school bus stops and its stop arm is extended. Stop no closer than 15 feet from the rear of the bus, and remain stopped until the stop arm is retracted and school bus starts moving again. Proceed with caution.

Meeting the bus from the front: When meeting the bus in one of the opposite two lanes (or more), you do not need to stop, even if the bus has stopped with lights flashing and stop arm out. The bus is not permitted to load or unload children who must cross this type of roadway, unless there are official traffic control devices or law enforcement present. This is the only time you may pass a school bus that is stopped and has its stop arm extended.



FOUR-LANE HIGHWAY



FOUR-LANE HIGHWAY WITH CENTER TURN LANE

2022-23 School Hours

Type of Day	Elem	Middle	Jr. High	HS
Teacher Regular Day	7:30-3:30	7:30-3:30	7:30-3:30	7:30-3:30
Student Regular Day	8:00-3:15	8:00-3:05	8:00-3:05	8:00-3:05
Building Opens for Drop-Off	7:35	7:45	7:45	7:45
Teacher Day on Wednesday	7:30-3:30	7:30-3:30	7:30-3:30	7:30-3:30
Student Day on Wednesday	9:00-3:15	9:00-3:05	9:00-3:05	9:00-3:05
Building Opens on Wednesday	8:35	8:45	8:45	8:45

BUILDING SAFETY MEASURES

In an effort to maintain a safe environment in our schools, all staff in Winterset will be wearing their staff identification badges while on any Winterset School Campus. Additionally, ALL visitors are expected to check into the office of any school building during regular business hours (7:30 a.m. – 3:30 p.m.) each time they visit the school. Visitors will need their driver’s license or state issued identification card

to check in. Our system, LobbyGuard, checks state and national databases for individuals who are on the sex offender list. Once a visitor has been cleared, they will be issued a Visitor Badge. This must be worn at all times while in the building. Our staff will be asking people who do not have a badge to return to the office immediately. While this may be a slight inconvenience, this measure will provide better protection for our students.

NOTIFY SCHOOL OF CHANGES

To make any changes to your personal information, please go to the Infinite Campus Parent Portal. Select Demographics, Household Information, Family Member and click Update for any information you wish to update.

Once you make your changes, you will need to click “Sent Update”. This information will be reviewed by the administration office and will be automatically updated in Infinite Campus once approved.

You can update: address, home phone, cell phone, work phone and emergency contact.

It is very important that this information is up to date and accurate in case of an emergency with your child.

If you currently don’t have access to the Parent Portal, forms are available online or at your child’s school. If you don’t have computer access, please contact the District Office at (515) 462-2718.

School Fees

Food Service Program:*	
Breakfast	\$2.00 per meal
PK-3 Lunch	\$2.75 per meal
4-12 Lunch	\$3.00 per meal
Second Lunch	\$4.25 per meal
Student Guest (all grades)	\$4.25 per meal
Adult Lunch	\$4.25 per meal
Milk 1/2 pint	50¢ each

NOTICE: Students with no available account balance will not be allowed to charge any further meals until a deposit is received.

*Application forms for Free & Reduced waiver of school fees are available online through the Parent Portal.

Textbook & Computer Fees:	
Kindergarten - 6th Grade.....	\$40.00
7th - 12th Grade	\$75.00
Computer-Damage	\$10.00*
Computer-Lost/Stolen.....	\$1,000.00*
*Subject to additional charges	
3 year old preschool.....	\$150/mon

PAST DUE FEES MUST BE PAID

All past due student fees/lunch accounts must be paid before school starts. Past due fees are posted on **Parent Portal**.

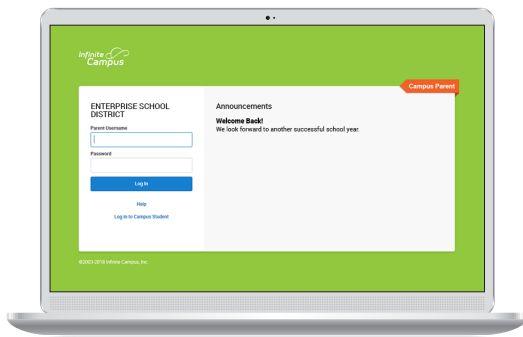
All fees and lunch account deposits can be paid through the Parent Portal, or at the Administration Building or the school buildings. Current fees are due October 15th.

STUDENT/PARENT HANDBOOKS

The Winterset Student/Parent Handbooks are posted **on the district website under the Parent tab**. We have produced a district-wide handbook that aligns to board policies and current state law. The handbook includes addendums for each school, covering building specific expectations. Paper copies are available in each school’s office. All students are expected to follow the policies, procedures and expectations. Please take the time to review the handbooks with your child.



Parents & Students, information is at your fingertips.

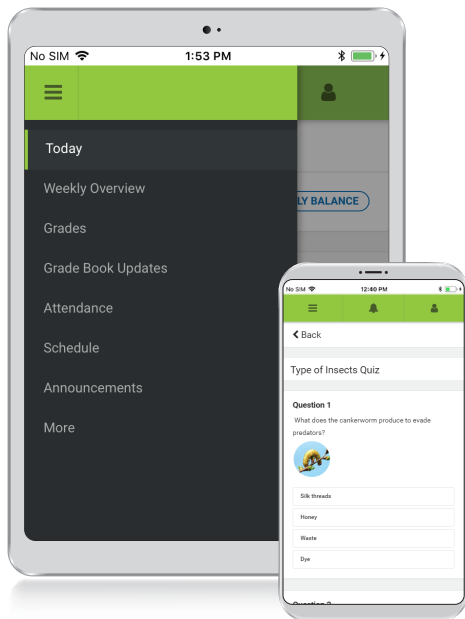


Access on the Web Campus Student and Campus Parent

Campus Student and Campus Parent are designed to provide real-time access to student information. The easy-to-use design displays what is currently happening in the classroom so you can understand, monitor, and participate in the educational process.

- » Announcements
- » Assignments
- » Attendance
- » Grades
- » Schedules

AND



Download the Mobile App Campus Student and Campus Parent

Announcements

Quickly see district announcements as they are posted.

Assignments

Browse assignments by specific class or due date.

Attendance

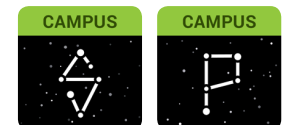
Review attendance events in summary and detail form.

Grades

Immediate access to grades as they are posted.

Schedule

Review schedule from anywhere, at any time.



Infinite Campus Mobile Apps can be downloaded through the Apple App Store or Google Play Store



Learn more at
infinitecampus.com/parents-students

Dear Winterset JH & HS Families,

It is with great enthusiasm that I write this letter of introduction as the new 7-12 Assistant Principal of Winterset Junior High and High School. I am incredibly grateful and excited to join the Husky Family! I look forward to working in partnership with Mr. Cam Smith (HS Principal) and Mr. Joshua Heyer (JH Principal) along with our amazing teachers and staff - to continue the work of advocating for and providing all students and families with an educational experience where values and successes are celebrated. Prior to joining Winterset, I was a HS Technology Instructor and Technology Coach at Hinton Community School (NW Iowa) for 14 years. Before becoming an educator, I was a restaurant manager, software consultant, and U.S. Army soldier with a tour of duty in Iraq, 2005. I enjoy the challenges of education, working with teachers, parents, and students - and I cannot wait to get to know our great students!

On a personal note, my wife, Jana and I enjoy spending time with our two children, Caden and Cambree, and all of their activities. Caden is a sophomore at Grand View University and is a thrower on the Track & Field team. Cambree is a sophomore at Winterset and is on the varsity Volleyball team, on Student Council, and will be on the Track & Field team.

I am committed to working alongside Mr. Smith and Mr. Heyer as we continue to provide leadership and build a structure of collaborative relationships in the school and community so that ALL students have a variety of opportunities to succeed! I look forward to meeting our students and families this coming school year!

"Coming together is a beginning. Keeping together is progress. Working together is success." ~ Henry Ford



Chad Sussex, Asst. JH/ HS Principal



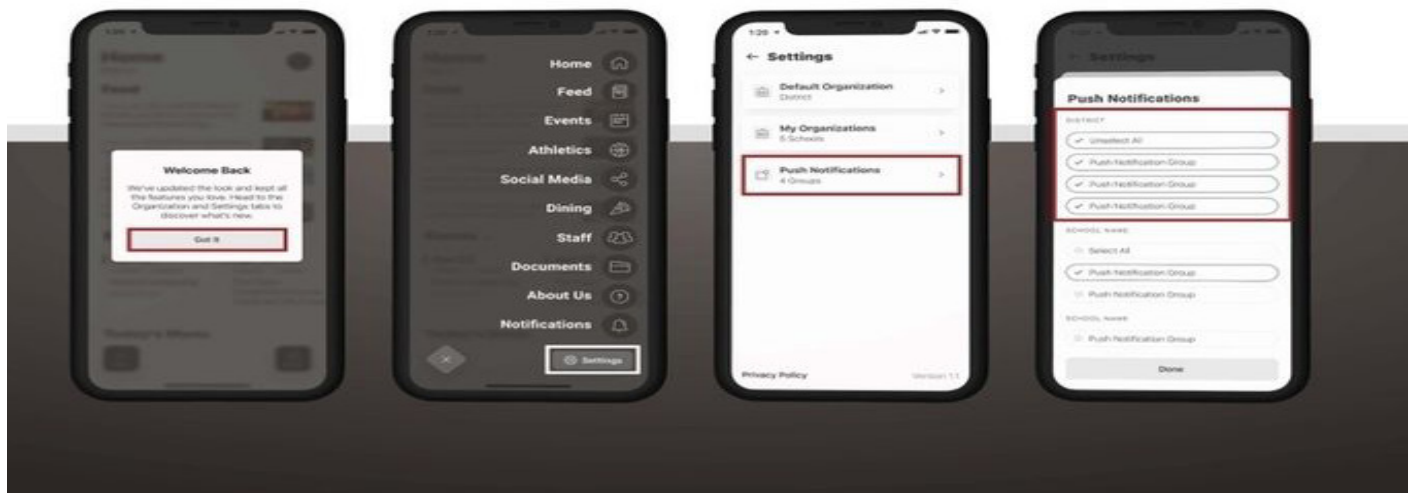
The poster features the City of Winterset Parks & Recreation logo at the top left. The main title "LIL' HUSKY BASKETBALL" is written in large, bold, white letters on a black background. Below the title is a basketball hoop with a ball in mid-air. To the right of the hoop, the text "NEW DATES" is in large yellow letters, followed by "SATURDAYS" and "NOV 5 - DEC 17" in white. Below that, "\$30/PARTICIPANT" and "INCLUDES BASKETBALL" are in yellow. Further down, "PROGRAM LED BY HIGH SCHOOL PLAYERS AND COACHES" is in white. At the bottom left, "REGISTRATION DEADLINE: OCT 22" is in white. Below that, "PRE-K (KINDERGARTEN NEXT YEAR) & KINDERGARTEN" is in white. A husky head logo is in the bottom right corner.

Pre-K: <https://tinyurl.com/4m5mv3tn>

Kindergarten: <https://tinyurl.com/3rn86aye>

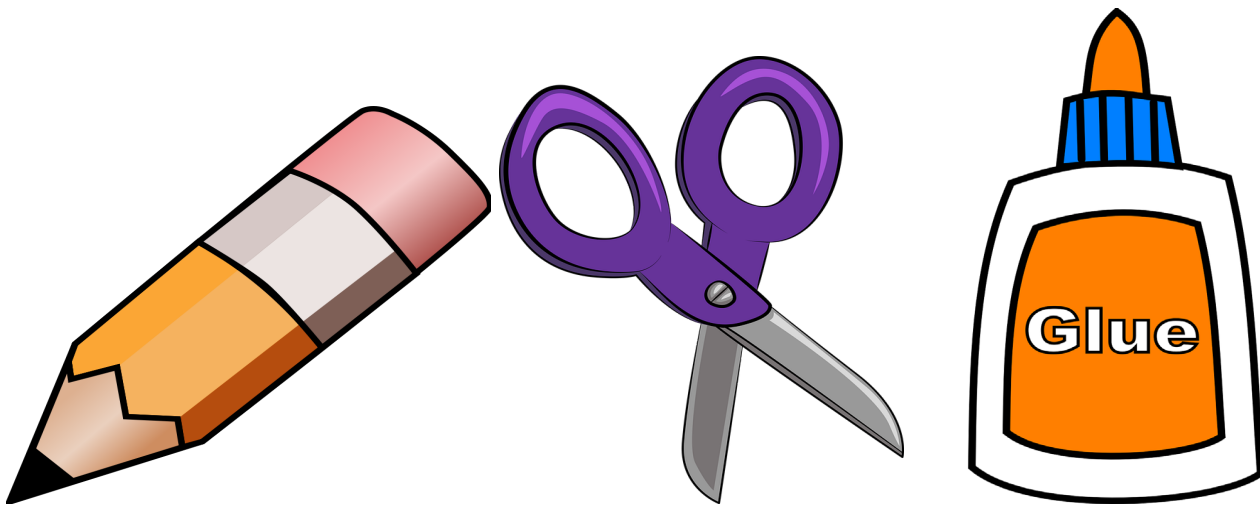
Don't miss any updates from Winterset!

1. Search **'Winterset School District'** in your phone's app store and download the app
2. Select **'ALLOW'** when prompted on initial download to ensure you receive notifications
3. Open the app, and navigate to the bottom menu then tap **'SETTINGS'**
4. Ensure your settings are turned on and your organization is selected



School Supplies

If you are having trouble covering the cost of school supplies for your child(ren), please contact Community Resources in Service to People (CRISP) at 515-462-9400 or email us at crisp@familyresourcelink.org. We can supply a backpack with grade level appropriate school supplies for your student.



Birthday in a Bag



Don't forget CRISP's Birthday in a Bag program, sponsored by our local Rotary Club. CRISP clients can receive a gift bag that includes a cake mix and frosting, cake pan, party supplies and birthday card, along with an age appropriate book for their child's birthday. Please call CRISP at 515-462-9400 to reserve your Birthday in a Bag.



WHS Guidance Department



Hello All! We would like to introduce ourselves to you so you are able to get to know us better.

Kathy Erickson (Right): Hello! I am the new counselor for last names A-J. I have worked in several districts and spent the past 12 years as a school counselor in Saydel. I live in Des Moines with my husband and son, who is a senior in high school. I am thrilled to be in Winterset, where everyone has been so welcoming and kind! The best way to reach me is via email:

kerickson@winterset.k12.ia.us

Sydney Slagter (Left): Hello! I am the new counselor for last names K through Z. This is my first school counseling job and I am beyond excited to be here at Winterset. I currently live in Waukee with my dog, Chance. I am a die-hard Iowa State fan, love watching or playing sports, reading and hanging out with my friends and family. I am very excited to be part of an amazing community and meet all of you. The best way to reach me with any questions is sslagter@winterset.k12.ia.us

Announcements:

- **Attention Seniors!**
 - FAFSA sign up is coming soon! Students planning to attend college during the 2023-2024 school year are encouraged to complete the application beginning October 1st, 2022. The application requires tax information from the previous year. The deadline to apply for FAFSA is July 1, 2023.
 - Some of you are in the process of applying for colleges. Official transcripts can be sent at any time but they need to be sent from someone in the school building. Let Mrs. Wetzel (twetzel@winterset.k12.ia.us) know when you have applied and she will send your transcripts to the selected colleges.
- **Testing! Testing! Testing!**
 - Several tests are being given during the Fall this year. The ACT's are given here in October, December, February and April to juniors and seniors planning to attend a

four-year college. These are four, 35-60 minute tests in academic areas of English, mathematics, reading, and science reasoning. Though these tests are not required for college admission, it still is important to take to help you get into your desired program. You must register online for the ACT at www.actstudent.org.

- October 22- registration deadline: 09/16/22 (09/30/22 with late fee)
- December 10- registration deadline: 11/04/22 (11/11/22 with late fee)
- February 11- registration deadline: 01/06/23 (01/20/23 with late fee)
- April 15- registration deadline: 03/10/23 (03/24/23 with late fee)
- June 10- registration deadline: 05/05/23 (05/19/23 with late fee)
- The PSAT/NMSQT test will be given on October 12th to high school sophomores and juniors nationwide. We encourage sophomores to take them for practice. The PSAT is a useful indicator of scholastic aptitude as well as the basis of some merit scholarships. PSAT is also the source of some college mailings that you will receive. Please contact your school counselor for more information.
- The Armed Services Vocational Aptitude Battery (ASVAB) Career Exploration Program is a two-part mission: to provide a career exploration service to American youth and provide qualified leads to military recruiters. Participants have no obligation to talk to a military recruiter or enter military service, but students in 11th grade and beyond can use their scores to explore enlistment if they choose. Please contact your school counselor for more information. November 10th will be the test date.
- College Planning and College Visits
 - On-campus visits are encouraged for seniors. Students wishing to make an on-campus visit must notify Mrs. Wetzel in the office and pick up the proper form two days in advance of the visit. This form requires students to check in with each of the teachers along with their teacher's signature and what work they will make up for the visit. This form also needs to be signed by a college representative during the visit and returned to the office the next day. If these procedures are not followed, the absence will be considered truancy with consequences following it. Please contact your school counselor if you need help arranging a college visit.
 - Iowa College Access Network (ICAN) is a great resource for any high school student and their guardian to begin discussions about life after high school. Explore the site to learn about college and career options, as well as financial aid information and more! [Iowa College Access Network \(ICAN\)](http://www.icansucceed.org)
- Golden Circle College and Career Fair
 - Students of all ages are encouraged to participate in the annual Golden Circle College and Career Fair. Whether you're a freshman or sophomore just starting to explore career options, or a junior or senior narrowing your list of college choices, Golden Circle College & Career Fair is the perfect opportunity for you to gather knowledge, make connections, and begin to make informed decisions about your future. It is on September 25, 2022 from 12:20 - 3:00 pm at Prairie Meadows. For more information go to: <https://www.icansucceed.org/golden-circle-college-and-career-fair>
- Scholarships

- Please visit our website to see what scholarships are available (<https://www.winterset.k12.ia.us/o/whs/page/whs-guidance>)

Mental Health Tip of the Month:

Our lives are ever-changing and at times can be very stressful. In those stressful moments, it is important to remember to focus on our breathing so we may get to a more relaxed state of mind to make decisions. Finger-breathing is an easy tool to help remember.

1. Put your index finger out on one hand
2. Starting from the wrist, you inhale as you come up the opposite hand's thumb and exhale as you come down the thumb.
3. Continue inhaling and exhaling while moving your index finger up and down until you reach your wrist again.
4. Repeat 3 to 5 times.



September tips for students from ICAN

- Freshmen
 - Ask your parents and other adults what they like and dislike about their careers. Find out what type of training or education is required for each job.
 - Extracurricular activities are a great way to meet new people and scholarship organizations consider a student's involvement in school and community activities. Keep track of your participation with an activities resume, a great resource for scholarship and admission applications. Download a template at [ICANSucceed.org/materials](https://www.icansucceed.org/materials).
- Sophomores
 - Attend the Golden Circle College & Career Fair, Iowa's largest. Talk with Iowa employers, colleges & universities from across the country, and attend breakout sessions. For event details visit [ICANSucceed.org/goldencircle](https://www.icansucceed.org/goldencircle).
 - Talk to your counselor about taking the PSAT/NMSQT (preliminary SAT/ National Merit Scholarship Qualifying Test) as practice for the actual college entrance exams.
- Juniors
 - Attend the Golden Circle College & Career Fair, Iowa's largest. Talk with Iowa employers, colleges & universities from across the country, and attend breakout sessions. For event details visit [ICANSucceed.org/goldencircle](https://www.icansucceed.org/goldencircle).
 - Check with your school counselor to register for the PSAT/NMSQT, a two-part exam similar to the SAT. Scores are used to determine National Merit Scholars.
- Seniors
 - Register now to take the SAT and/or ACT. Free ACT study guides are available at <https://cloud.e.act.org/free-practice-act-test>.
 - Begin writing essays for admission applications.
 - Ask adults to write letters of recommendation.



MYPLATE GUIDE TO SCHOOL BREAKFAST

for Families

FRUITS
A full cup of fruit is available every day, providing nutrients that are important for kids' health, such as potassium, dietary fiber, vitamin C, and folate (folic acid).

MILK
Kids and teens need the calcium, protein, and vitamin D found in milk for strong bones, teeth, and muscles.

VEGETABLES
Every breakfast does not include vegetables, but schools may offer them in place of fruits.

PROTEIN FOODS
Some breakfast menus may offer items such as eggs, nuts, or meats to pair with whole-grain options.

GRAINS
Starting every day the whole grains way gives kids and teens B vitamins, minerals, and fiber to feel fuller longer so they stay alert to concentrate at school.

Visit teamnutrition.usda.gov for additional tips and activities.



MYPLATE GUIDE TO SCHOOL LUNCH

for Families

VEGETABLES
A variety of vegetables helps kids get the nutrients and fiber they need for good health.

MILK
Low-fat (1%) or Fat-free milk. Children and teens need the calcium, protein, and vitamin D found in milk for strong bones, teeth and muscles.

GRAINS
Whole grains give kids B vitamins, minerals, and fiber to help them feel fuller longer so they stay alert to concentrate at school.

PROTEIN FOODS
Meat, poultry, fish, dry beans, peas, eggs, nuts, and seeds provide many nutrients including protein and iron. Portion sizes are based upon the nutrition needs of children in various grade groups. School meals also allow cheese, tofu, and yogurt to count as the meat/meat alternate in the school lunch.

FRUITS
Every school lunch includes fruits as well as vegetables. Only 1/2 of the fruits offered may be 100% juice, since whole and cut-up fruits have more fiber.

Visit teamnutrition.usda.gov for additional tips and activities.



Reminder: In order to qualify as a whole “meal” students must take all of the required elements. If they do not, then they will be charged ala carte for each item. This also means if you are free/ reduced, you will be charged at the higher rate, instead of receiving the free/ reduced rate. If you have questions about the USDA requirement, please contact the food service director @ Damien. Jaster@compass-usa.com

FFA NEWS & STATE FAIR UPDATE

By Landry Kaysen

The new school year means new opportunities, and joining FFA is one of them! This year we have many new ideas to bring to the chapter such as a barn dance and a school garden, in addition to our annual chapter events and fundraisers. Through FFA you will have many new opportunities in different fields you might not have access to elsewhere. A few of these include prepared and extemporaneous speeches, job interview practice, showing livestock, and more. You DO NOT need to live on a farm or have animals to be in FFA, in fact, there are several people in our chapter that live in town! You also don't have to wait until high school to join, Junior High members are more than welcome to be a part of our chapter. For more information make sure to come to our annual Back to School Picnic on September eleventh and while you are there enjoy free food and games! Congratulations to all of the chapter members who exhibited at the county and state fair, we are immensely proud of your success!



PLEASE CHECK THE DISTRICT WEBSITE FOR UPDATES AS THE FOLLOWING MAY CHANGE



SEPTEMBER

ATHLETIC CALENDAR

Check for updates at raccoonriverconference.org or call the high school at 462-3320.

HIGH SCHOOL 9TH & VARSITY FOOTBALL

DATE	TIME	LEVEL	OPPONENT	SITE
Sep 2	4:15/7:00	9/V	Creston	Winterset
Sep 9	4:30/7:00	9/V	Van Meter	Van Meter
Sep 16	4:15/7:00	9/V	ADM	ADM
Sep 23	4:15/7:00	9/V	DCG-Homecoming	Winterset
Sep 30	4:15/7:00	9/V	Glenwood	Glenwood

HIGH SCHOOL JV FOOTBALL

DATE	TIME	LEVEL	OPPONENT	SITE
Sep 5	6:00 pm	JV	Creston	Creston
Sep 12	5:00 pm	JV	Clarinda	Winterset
Sep 19	6:00 pm	JV	ADM	Winterset
Sep 26	6:30 pm	JV	DCG	DCG

JUNIOR HIGH FOOTBALL

DATE	TIME	LEVEL	OPPONENT	SITE
Sep 8	4:15 PM	7th A/B	ADM	Winterset
		8th A/B	ADM	ADM
Sep 13	4:15 PM	7th A/B	North Polk	Winterset
		8th A/B	North Polk	North Polk
Sep 20	4:15 PM	7th A/B	B-F	Bondurant
		8th A/B	B-F	Winterset
Sep 27	4:15 PM	7th A/B	Gilbert	Gilbert
		8th A/B	Gilbert	Winterset

HIGH SCHOOL VOLLEYBALL

DATE	TIME	LEVEL	OPPONENT	SITE
Sep 6	5:30 pm	JV Black/Gold/V	Boone	Winterset
Sep 10	8:30 am	Varsity	SC Calhoun	Rockwell City
Sep 13	5:30 pm	JV Black/Gold/V	Carlisle	Carlisle
Sep 15	5:30 pm	JV Black/Gold	Carroll	Carroll
Sep 17	9:00 am	JV Gold/Black	Tourn	Winterset
Sep 20	5:30 pm	JV Black/Gold/V	Gilbert	Winterset
Sep 22	5:30 pm	JV Black/Gold/V	North Polk	North Polk
Sep 24	8:30 am	JV Black	Johnston Tourn	Johnston
Sep 29	5:00 pm	JV Black	Tourn	Winterset

JUNIOR HIGH VOLLEYBALL

DATE	TIME	LEVEL	OPPONENT	SITE
Sep 8	4:15 pm	7th	ADM	Winterset-MS
		8th	ADM	ADM
Sep 12	4:15 pm	7th	North Polk	Winterset-MS
		8th	North Polk	North Polk
Sep 19 MS	4:15 pm	7th	Boone	Winterset-
		8th	Boone	Boone
Sep 22 MS	4:15 pm	7th	Ballard	Huxley
		8th	Ballard	Winterset-
Sep 29	4:15 pm	7th	Gilbert	Winterset-MS
		8th	Gilbert	Gilbert

HIGH SCHOOL CROSS COUNTRY

DATE	TIME	LEVEL	OPPONENT	SITE
Sep 6	4:15 pm	JV/V	Winterset Invitational	Winterset
Sep 12	4:30 pm	JV/V	Ballard Invite	Huxley
Sep 15	5:00 pm	JV/V	Corning Invite	Lake Icaria
Sep 17	11:20 am	V	Heartland Classic	Pella
Sep 22	4:30 pm	JV/V	Indianola	Pickard
Sep 27	4:15 pm	JV/V	Knoxville Invite	Pine Knolls CC
Sep 29	5:00 pm	JV/V	Perry Invite	Perry Golf CC

JUNIOR HIGH CROSS COUNTRY

DATE	TIME	LEVEL	OPPONENT	SITE
Sep 6	4:15 pm	7/8	Winterset Invite	Winterset
Sep 12	4:30 pm	7/8	Ballard-Huxley	Huxley
Sep 15	4:30 pm	JV/V	Southwest Valley	Lake Icaria
Sep 20	4:00 pm	7/8	Creston Invitational	Creston
Sep 29	4:15 pm	JV/V	Perry Invite	Perry Golf CC

GAME TICKETS

A new school year is upon us and with it comes a new year of athletic competition. We are looking forward to outstanding seasons in all areas.

Activity Passes for the 2021-2022 school year will need to be purchased through Ticket Spicket.

The passes that are available are:

1. Student Pass (\$55)
2. Adult Pass (\$100)

SENIOR CITIZEN'S PASS

Any person age sixty-five (65) or older, is eligible to obtain a Senior Citizen Pass. This pass is good for admission to all of the school's activities except state-sponsored tournaments. To obtain this pass, stop by the High School Office, 720 Husky Drive, or call (515) 462-3320.

WHS Student Council has been busy planning for the upcoming school year throughout the summer. They solicited donations to purchase freshman/ transfer student t-shirts for all incoming students. Officers planned a fun back to school social the week before school at the City Park. There were over 50 members there. The last 2 major accomplishments are picking a homecoming theme-“Light up the Night: Neon” and laying out the plans for September 18-24. Student Council runs all of the homecoming week festivities, and it takes a lot of work to get everything ready.

Also WHS student Council has been recognized as an Honor Council for the state of Iowa because of all their work over the last year. They have compiled an online scrapbook with all of last years’ activities. We are also helping form a brand new Superintendent’s Cabinet to voice student concerns. Student Council Officers for the 2022-23 school year are as follows:

- President: Molly Shahan
- VP: Bailey Acton & Halle Hoefing
- Secretary: Lily Applegate & Serena Phillips
- Treasurer: Luke Porter
- Historian: Autumn Riegel & Sami Craven
- Press/ Marketing: Avary Darling & Franklin Pastorino
- School Board Rep: Sami Craven

Thanks to our new sponsors:
Homefront Realty
Jones Creek
Children’s Jungle
Love Bird Events
Nick & Lexi
Wightman



Homecoming is
Sept. 23, 2022
The theme is Neon Lights: Light up the Night
at WCSD!



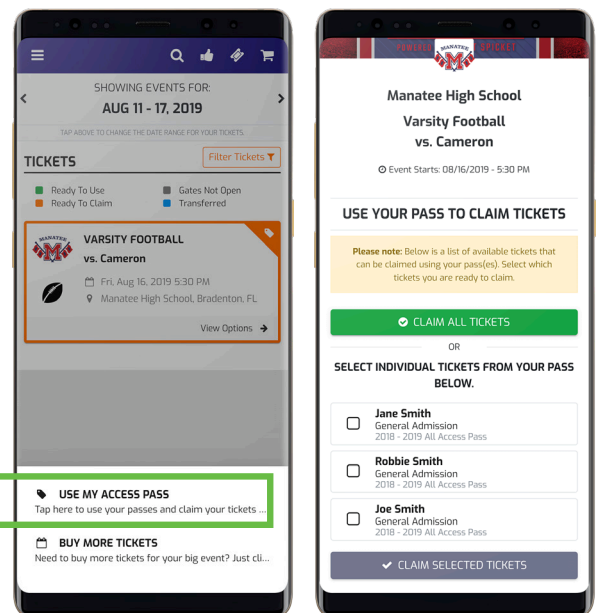
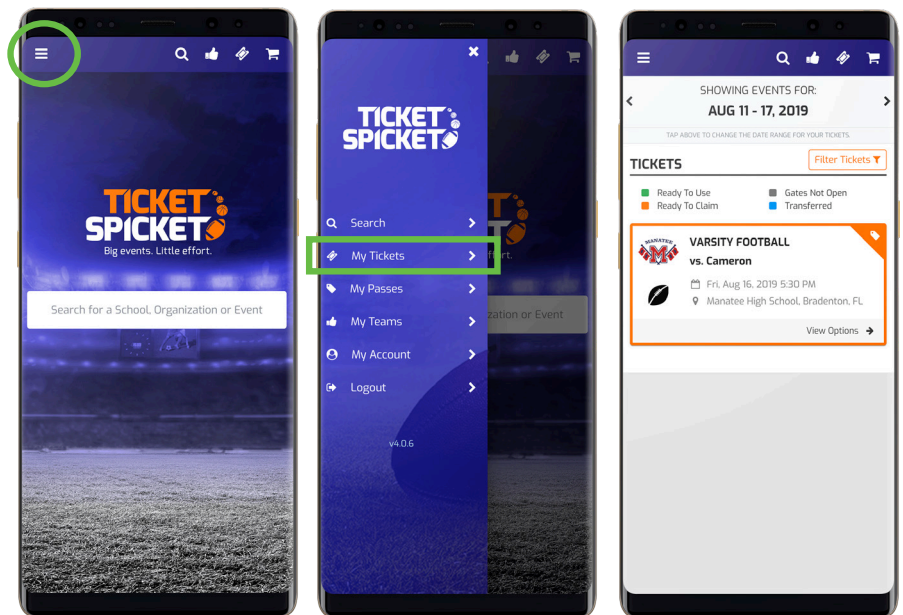
THE QUICK START GUIDE

READY? SET... GO!

Welcome to Ticket Spicket! We look forward to helping you easily buy tickets and passes online to support your favorite student athletes and local teams. Below you will find more information on how to quickly get started with using a mobile season pass and digital ticket on your device, and how you can conveniently transfer an already purchased item to another Ticket Spicket customer.

1. USE AN ACCESS PASS

- While using the Ticket Spicket mobile app or website, navigate to the main menu icon located at the top left.
- Click on the 2nd link in the menu labeled “My Tickets.”
- When you arrive at the Tickets page, you will conveniently find any of the events your pass is eligible for listed out in order. To use your pass, tap on the event that you'd like to attend.
- Choose “Use My Access Pass” or “Use My Punch Pass” from the menu. (If you have an Access Pass, a list of Pass Holders that are included on your pass will also be displayed.)
- Select which Pass Holders you want to redeem tickets for at this event and click “Claim Selected Tickets.”
- You will now have ready-to-use tickets to this event, which have been claimed from your pass. If the gates to the event are currently open then your tickets will conveniently pop up and allow you to check in.





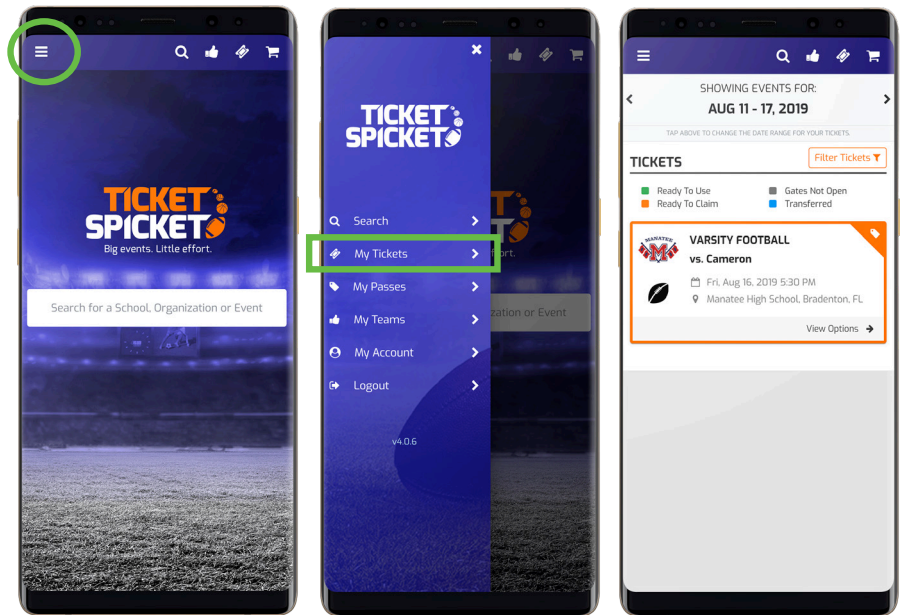
THE QUICK START GUIDE

READY? SET... GO!

(CONTINUED)

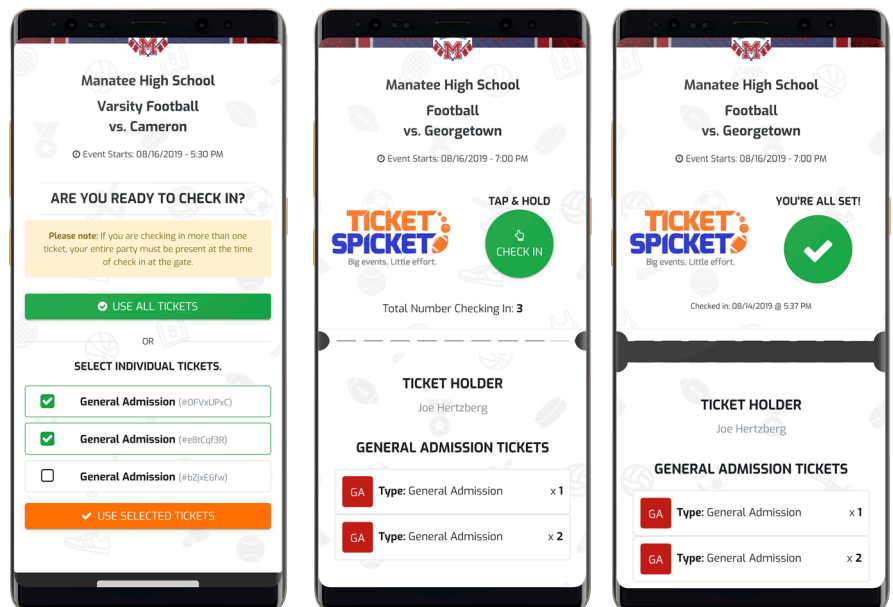
2. USE A DIGITAL TICKET

- While using the Ticket Spicket mobile app or website, navigate to the main menu icon located at the top left.
- Click on the 2nd link in the menu labeled “My Tickets.” Events that you have purchased tickets for will be listed here.
- To use your tickets, tap the event and select “View Tickets” from the menu options..



- Next, if you have more than one ticket, you’ll select each ticket you’d like to use. (Select All Tickets to redeem all at once.)
- The last step is the event check-in process. You should only do this in front of the gate attendant.
- At a Digital Only event, your ticket will have a green button that you will press & hold for 2 seconds. That will validate and “tear” the ticket which will verify and allow you entry to the event.

(Please note: If you have a QR code on the ticket, show your phone to the gate attendee to have it scanned.)



HAVE QUESTIONS? WE'RE HERE TO HELP!

support@ticketspicket.com
1.855.96.TICKET

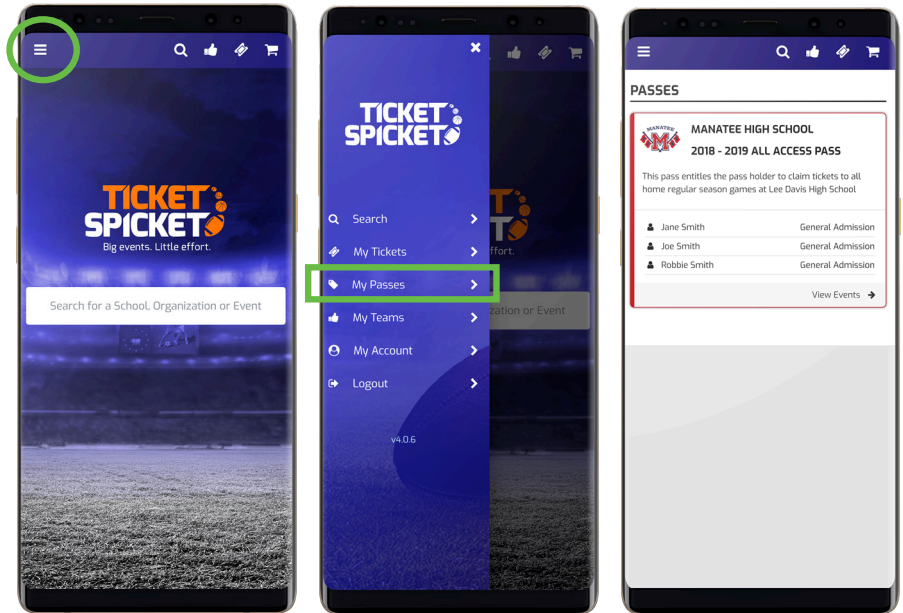
THE QUICK START GUIDE

READY? SET... GO!

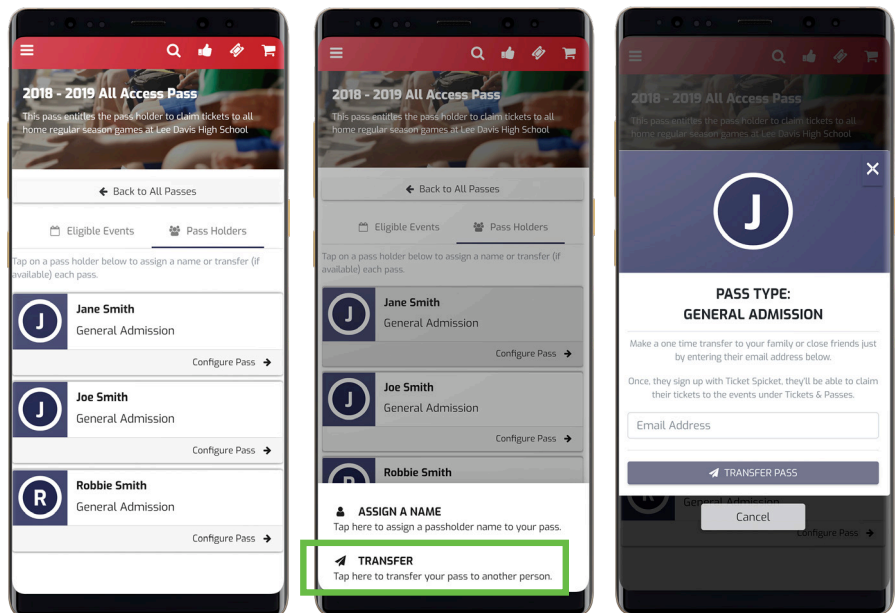
(CONTINUED)

3. TRANSFER AN ACCESS PASS

- While using the Ticket Spicket mobile app or website, navigate to the main menu icon located at the top left.
- Click on the 3rd link in the menu labeled “My Passes.” Any passes you have purchased previously will be listed here and available for quick access.
- Select the pass you would like to transfer to another account.



- You will see a list of any other pass holders associated with your account. Simply tap the pass / pass holder that you would like to share, & select the “Transfer Pass” option at the bottom.
- Enter the person's email address & the person will receive an email indicating that you've sent them a Ticket Spicket access pass.
- If they haven't already done so - the recipient will need to register their email address to create a Ticket Spicket account & accept the transfer.
- Once they accept, the pass will then be associated with their Ticket Spicket account & no longer visible to you.



HAVE QUESTIONS? WE'RE HERE TO HELP!

support@ticketspicket.com
1.855.96.TICKET



HUSKY BOOSTER CLUB

2022-23 Membership Form

Name (as you would like it to appear in the program at athletic events):

Address: _____

Phone: _____ Email: _____

CONTRIBUTION LEVEL (SELECT ONE):

_____**VIP MEMBERSHIP - \$1000**

Includes 4 Annual Passes*, \$100 voucher for Husky gear, listing on program and recognized at halftime of game with framed letter (plus future years).

_____**DIAMOND MEMBERSHIP - \$750**

Includes 4 Annual Passes*, \$70 voucher for Husky gear, listing on program and recognized at halftime of game with framed letter (plus future years).

_____**PLATINUM MEMBERSHIP - \$500**

Includes 2 Annual Passes*, \$50 voucher for Husky gear, and listing on program.

_____**GOLD MEMBERSHIP - \$300**

Includes 1 Annual Pass*, \$25 voucher for Husky gear, and listing on program.

_____**SILVER MEMBERSHIP - \$200**

Includes 1 Annual Pass*, \$10 voucher for Husky gear, and listing on program.

_____**BLACK MEMBERSHIP - \$150**

\$50 voucher for Husky gear and listing on program.

_____**BRONZE MEMBERSHIP - \$100**

\$30 voucher for Husky gear and listing on program.

_____**HUSKY MEMBERSHIP - \$50**

\$10 voucher for Husky gear and listing on program.

*Annual Passes are good for the 2021-22 school year for all athletic events (includes district and regional games)

Please mail this form and check payable to:
Husky Booster Club, 720 Husky Drive, Winterset, IA, 50273

Online Payment option at Huskyboosterclub.org

THANK YOU FOR YOUR SUPPORT!

THANK YOU FOR YOUR SUPPORT

Your membership in the Husky Booster Club is a great way to show your support to our student athletes and fine arts participants.

Money raised by the Husky Booster Club directly benefits all High School and Junior High athletic and fine arts programs. Thanks to your support, the Husky Booster Club has provided over \$40,000 in uniforms, equipment, and other items to these programs in the past three years, some of which include:

- Baseball Pitching Machine
- Dance Team Entry Fees
- Boys Basketball Ball Rack
- Athletic Training
- Sport Socks for Football
- Sports Posters for Teams
- Shoot-A-Way machine for Boys and Girls Basketball
- Bars, Tees, Practice Balls for Softball and Baseball
- Grill Rules Tags
- Piano for Choir and Band
- Softball Pitching Machine
- Team Uniforms & Warm-ups for: Boys Basketball, Girls Track, Baseball, Boys Track, Cheerleading, Boys Soccer, Girls Basketball, Wrestling

BOARD MEMBERS

Peter Corkrean -President

Jeff Thompson- VP

Terry McNamara

Marilyn McNamara

Jill Buckalew

John McDonald

Tami Ryerson

Bob Benshoof

Candi Dole

Ben Messer

Marty Hirsch

Jason Kleemeier

Lew and Candace Jordan

Tom Acton

Jason Hall



5th Grade Band Information Letter



Welcome back to a new and exciting school year! My name is Colton Whetstone and I am the new 5th/6th grade band director at WMS! I am really looking forward to meeting your students, and I can't WAIT to get started making music! :-)

I receive many questions at the beginning of every school year surrounding band, I hope to address some of the more common questions in this letter. If you have any questions or concerns not addressed in this letter, PLEASE contact me via email or phone.

Mr. Colton Whetstone - 5th/6th Grade Band Director
Winterset Middle School
Email: cwhetstone@winterset.k12.ia.us
Phone: (515) 462-3010 ext. 5139

5th Grade Band Timeline/Schedule

August 26th-September 9th-- Instrument "testing" to try out instruments - during General Music class

September 13th-- Rieman Music Rental Night from 6pm-8pm WMS Commons

Week of September 19th-- 5th Grade Lessons Begin

Week of October 3rd-- Full Band Rehearsals Begin

Please use the google form to **Sign-Up** for 5th Grade Band, students will also receive a paper copy of our sign up sheet during instrument testing in Music Class. You may complete either the Google Form or the paper form:

<https://forms.gle/gus7NWUMNpNfcjo47>

Frequently Asked Questions/Things to Consider

Why should my kid be in Band? Why is music important?

Beginning band will enrich your child's basic education and help develop greater self-confidence, responsibility, dexterity and self-expression. Participation in band encourages teamwork, self-discipline, cooperation and goal achievement. Plus, playing in the band is fun! It's a lifelong skill that is valuable to communities, colleges and people everywhere.

What instrument should my son/ daughter play?

All students will have the chance to try out all instruments in the first few weeks of school in their General Music class. I always recommend that students play an instrument that they think is "cool" with a sound they enjoy that they are excited about. If they start on an instrument they did not pick or are not excited about, it can be very difficult to keep your student motivated throughout the year or in the years ahead. Certain students are more likely to be successful on specific instruments due to physical features, similar to finding the perfect fitting shoe!

What instruments are in a Concert Band?

Flute, Clarinet, Alto Saxophone, Trumpet, French Horn, Trombone, Baritone, Tuba, and Percussion

When will my child have band? Do they miss any class?

5th grade band occurs on days 1, 3, 5 from 2:30-3:10. Every student will also receive one 20-minute lesson every 6-day cycle. These band lessons will not occur during core classes; students will be taken from other specials and general music for their band lesson. Students will need to be reminded frequently of the days in which they will need to bring their instruments to school.

Do I have to practice to be in band?

Yes, you have to practice to keep up with the class and to improve. Some students can get by for a while on talent alone. But, most of those students are quickly passed by their hard working friends who are practicing. Band is more fun if you are improving and successful, and practice is the only way to accomplish that. If you work at it, practicing can be fun. You just need to have patience and be creative.

Can we use a 'family instrument'?

Yes, that's great! As long as it is in good playing condition. If you have questions about the condition of your instrument, please take it to one of us or a local music store BEFORE the start of band to have it checked out.

We simply cannot afford it.

If your son/daughter wishes to be in band but you feel that he or she cannot participate due to financial constraints, PLEASE contact me. The school does have a limited number of school instruments available for such circumstances and we will not exclude a student from participating in Band because of money.

I found a cheap band instrument at Wal-Mart/ Costco/ eBay/ Amazon/ pawn shop.

Please beware of the band instruments that have started appearing in retail stores (Walmart, Costco, Amazon, etc.), their prices are certainly appealing, but remember the saying, "You get what you pay for." These instruments are built with non-standard parts that are almost impossible to repair. Most music stores have stated they will not offer repairs on these instruments. In short, these are toys, not instruments and are not a wise investment.

Pawnshops and Ebay are also very risky. The best way to assure the purchase of a quality instrument is to work with a reputable instrument dealer and/or instrument repair shop (ex. Rieman Music) – on-site repair facilities are an indication of expertise and commitment to customer service. If you would like additional guidance, feel free to contact your band teacher.

You will be amazed at the accomplishments the beginning band students will make in just one year's time. It IS hard work, but it is rewarding work and it produces skills that can last a lifetime! Looking forward to a GREAT year!

WCSD: Voted Physical Plant & Equipment Levy (PPEL)



Don't forget to vote on September 13, 2022

What is a Voted PPEL?

The Physical Plant and Equipment Levy (PPEL) was created by the Iowa Legislature in the early 1990s as a locally generated funding stream that is used **to support school district facilities and equipment**. Voters can approve a maximum levy of \$1.34 per \$1,000 of property tax.

What is the history of the Voted PPEL in WCSD?

The current Voted PPEL was approved in Winterset by voters on February 4, 2014. Since that time the funds have been used to replace roofs on buildings, purchase new buses and small vehicles, upgrade security systems, and enhance or improve several facilities across the district.

What can Voted PPEL funds be used for?

State law is very specific regarding how PPEL funds can be used. The funds can be used for things such as roofing replacement and repair, masonry repairs, energy conservation improvements, concrete and asphalt repairs, school buses, technology, and other facility improvements. PPEL funds can not be used for salaries, benefits, textbooks, or educational programs.

How are the PPEL funds being used?

Annual PPEL Funded Projects:

- Non-instructional software
- Copier lease
- Administration office lease
- Tuckpointing maintenance on all buildings
- Vehicle replacements

Additional One-Time Projects:

- MS playground equipment
- Weight room equipment
- Resurfacing of the track
- MS parking replacement
- LobbyGuard - security software
- Resurface of N. HS parking lot
- HS kitchen equipment
- Additional home & visitor football bleachers

Projected Future Use of PPEL funds:

- Connectivity and internet network upgrades
- Student computer replacements
- Bus and small vehicle replacement
- Security system maintenance & upgrades
- Lease/purchase/build administration building
- Ongoing building & facility maintenance & upgrades

PPEL Vote

- ✓ First passed in 2014 at WCSD
- ✓ Voting for a 10-year extension
- ✓ Will NOT increase your taxes

When & Where

- ✓ Tuesday, September 13, 2022
- ✓ Polling opens @ Jackson Building from 7:00 AM-8:00 PM
- ✓ Absentee ballots available on August 15th; must be returned to the Auditor by September 13 by 8:00 PM

Funds Generated

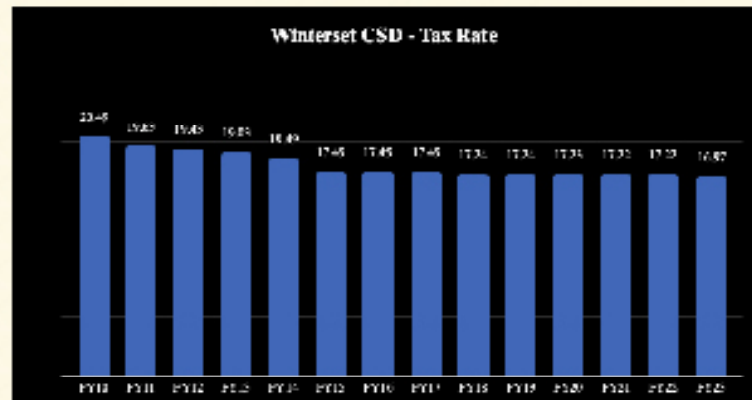
- ✓ Approximately \$850,000 annually
- ✓ Allows the district to address its locally identified needs
- ✓ Can NOT be used for salaries and benefits

As a caring and committed learning community, we will empower all within our learning organization towards continuous learning, personal excellence, and lifelong success.

Important Information & Comparisons

What has the impact of the Voted PPEL been on the district tax rate?

The chart to the right shows that over the past 14 years the district has maintained or lowered the tax rate over the previous year. You can see since the passage of the Voted PPEL in 2014 the overall district tax rate has decreased from \$18.49 to \$16.97 per \$1,000 of assessed value; a difference of \$1.52.



Do other districts across the state and in our conference also have a Voted PPEL to support their district's needs?

RRC School District	Voted PPEL	Amount Levied
ADM	Yes	\$1.34
Ballard	Yes	\$0.93
Bondurant	Yes	\$1.34
Boone	Yes	\$1.34
Carlisle	Yes	\$1.34
Carroll	Yes	\$0.67
Gilbert	Yes	\$1.34
North Polk	Yes	\$1.34
Winterset	Yes	\$1.34
Surrounding Districts	Voted PPEL	Amount Levied
Earlham	Yes	\$1.34
I-35	Yes	\$1.34
Creston	Yes	\$0.35
Martensdale St. Mary	Yes	\$0.67
Van Meter	Yes	\$1.34

As you can see from the chart to the left, all of the Raccoon River Conference schools have a Voted PPEL in place in addition to all of the surrounding districts. Of the 327 districts in Iowa 275 of them have a Voted PPEL levy in place to support their districts' needs.

What happens if the PPEL doesn't pass?

The district will continue to have ongoing maintenance and replacement needs with regards to our facilities and equipment. If we are no longer able to use funds generated by the Voted PPEL we would be forced to use other funding sources such as our General Fund, which is used to pay our teachers salaries and benefits. Taking the revenues from the General Fund would negatively impact the number of programs we are able to provide our students.

Where can I obtain additional factual information about the Voted PPEL at Winterset CSD?

To obtain facts about the upcoming vote to extend the voted PPEL levy for an additional 10 years, contact the Winterset Community School District's Administration Office at 515-462-2718.

As a caring and committed learning community, we will empower all within our learning organization towards continuous learning, personal excellence, and lifelong success.



WHAT TO DO AFTER YOU LOSE IT WITH YOUR KIDS?

Let's be honest, you're going to "lose it" with your kids sometimes.

AND THAT'S OK!

HERE'S WHY IT'S OK!

Losing it occasionally teaches kids that...

- ✿ All Humans lose their temper sometimes
- ✿ Tension or conflict are a normal part of relationships
- ✿ It is **NOT** automatically problematic
- ✿ We **CAN** make the relationship stronger even after a conflict!

So, The Most Important Part of Losing It?

The repair!

(And definitely **NOT** guilt!)



In her masterclass, **Managing Our Triggers**, Dr. Carla Naumburg shares how we can recover when we've "lost it" with our kids.

STEP 1

FIRST, CALM YOURSELF DOWN

- ✿ Take deep breaths
- ✿ Count to ten
- ✿ Recite a prayer or mantra
- ✿ Physically get out your energy (walk, run, dance, exercise etc.)
- ✿ Or, anything else that works for **you**

STEP 2

APOLOGIZE FOR YOUR BEHAVIOR (NOT YOUR FEELINGS!)

For example:

Say,

I'm sorry for screaming when I was angry.

Instead of,

I'm sorry, I was angry.

STEP 3

REPAIR YOUR RELATIONSHIP

For example:

I'm in a much better place now. Do you want to continue playing our game?

I'm realizing I'm exhausted. How about you have a little screen time while I sit?

How about we snuggle together for a bit?

STEP 4

HAVE SELF-COMPASSION!



REMEMBER!

There are no bad parents, only parents who don't have the tools and support to parent the way they want!



Preventing Youth Suicide: Tips for Parents and Educators

If you or someone you know is suicidal, get help immediately via 911, the National Suicide Prevention Lifeline at 1-800-273-TALK or the Crisis Text Line (text "HOME" to 741741).

Suicide is preventable. Youth who are contemplating suicide frequently give warning signs. Do not be afraid to ask about suicidal thoughts. Never take warning signs lightly or promise to keep them secret.

Risk Factors



- Hopelessness
- Non-suicidal self injury (e.g., cutting)
- Mental illness, especially severe depression, but also post traumatic stress, ADHD, and substance abuse
- History of suicidal thinking and behavior
- Prior suicide among peers or family members
- Interpersonal conflict, family stress/dysfunction
- Presence of a firearm in the home

Warning Signs



- Suicidal threats in the form of direct (e.g., "I want to die") and indirect (e.g. "I wish I could go to sleep and not wake up") statements
- Suicide notes, plans, online postings
- Making final arrangements
- Preoccupation with death
- Giving away prized possessions
- Talking about death
- Sudden unexplained happiness
- Increased risk taking
- Heavy drug/alcohol use

What to Do



- Remain calm, nonjudgmental and listen.
- Ask directly about suicide (e.g., "Are you thinking about suicide").
- Focus on your concern for their well-being
- Avoid being accusatory (e.g., don't say, "You aren't going to do anything stupid are you?").
- Reassure them that there is help; they will not feel like this forever.
- Provide constant supervision. Do not leave the youth alone.
- Remove means for self-harm, especially firearms.
- **Get help!** Never agree to keep suicidal thoughts a secret. Tell an appropriate caregiving adult. Parents should seek help from school or community mental health resources as soon as possible. School staff should take the student to a school-employed mental health professional.

Reminders for Parents



After a school notifies a parent of their child's risk for suicide and provides referral information, parents must:

- **Continue to take threats seriously.** Follow through is important even after the child calms down or informs the parent "they didn't mean it."
- **Access school supports.** If parents are uncomfortable with following through on referrals, they can give the school psychologist permission to contact the referral agency, provide referral information, and follow up on the visit.
- **Maintain communication with school.** After an intervention, the school will also provide follow-up supports. Your communication will be crucial to ensuring that the school is the safest, most comfortable place possible for your child.

2022-2023 Winterset Community School – Preschool Calendar Board Approved ()

CALENDAR LEGEND
 Start/End 
 No School 

M	T	W	Th	F	Days
September					
			1	2	
5	6	7	8	9	
12	13	14	15	16	
19	20	21	22	23	
26	27	28	29	30	
October					
3	4	5	6	7	
10	11	12	13	14	
17	18	19	20	21	
24	25	26	27	28	
31					
November					
	1	2	3	4	
7	8	9	10	11	
14	15	16	17	18	
21	22	23	24	25	
28	29	30			
December					
			1	2	
5	6	7	8	9	
12	13	14	15	16	
19	20	21	22	23	
26	27	28	29	30	
January					
2	3	4	5	6	
9	10	11	12	13	
16	17	18	19	20	
23	24	25	26	27	
30	31				
February					
		1	2	3	
6	7	8	9	10	
13	14	15	16	17	
20	21	22	23	24	
27	28				
March					
		1	2	3	
6	7	8	9	10	
13	14	15	16	17	
20	21	22	23	24	
27	28	29	30	31	
April					
3	4	5	6	7	
10	11	12	13	14	
17	18	19	20	21	
24	25	26	27	28	
May					
1	2	3	4	5	
8	9	10	11	12	
15	16	17	18	19	

Date	Events
	No Preschool on Wednesday plus the additional days noted
Sept 1	First Day of Preschool
Sept 5	Labor Day (No Preschool)
Oct 21	No Preschool (PD Day)
Oct 24	No Preschool (Innovation Day)
Nov 3 & 6	No Preschool (Conferences)
Nov 21-25	No Preschool
Dec 7	Preschool Family Fun Night
Dec 23-Jan 2	No Preschool (Holiday Break)
Jan 3	Classes Resume
Jan 13	No Preschool (PD Day)
Feb 9 & 14	No Preschool (Conferences)
Feb 13	No Preschool (PD Day)
March 13-17	No Preschool (Spring Break)
March 24	No Preschool (PD Day)
April 10	No Preschool
May 19	Last Day for Preschool

ROSEANNA'S RUN 2022



Roseanna Otto with her 3 daughters.

About the run:

Roseanna Otto was a loving mother to 3 beautiful girls. She was an amazing sister, daughter, and friend. She was a lover, giver, and caretaker. Roseanna was murdered by her abusive ex-boyfriend May 27, 2019, in Winterset, Iowa. This annual run is in memory of Roseanna to create awareness to domestic violence. A portion of the proceeds will be donated to Crisis Intervention & Advocacy Center in Adel, Iowa. The rest will be directed to Roseanna's daughters' college savings fund.

- Family friendly event
- Running or walking is acceptable
- Virtual option available

OCTOBER 1, 2022 9:30 AM

WINTERSET HIGH SCHOOL 624 HUSKY DR. WINTERSET, IA US 50273

Facebook Event: Roseanna's Run 2022

Registration Website: <https://runsignup.com/Race/IA/Winterset/RoseannasRun>



CRISIS INTERVENTION & ADVOCACY CENTER

P.O. Box 40 Adel, Iowa 50003

515-993-4095 | www.supportingsurvivors.org

District Notices

Each year, various state and federal laws, as well as School Board policies, require the district to provide a variety of annual notifications to parents. Many of these notifications can also be found in student/parent handbooks, or on the school district website.

Annual Notice of Nondiscrimination

The Winterset Community School District offers career and technical programs in the following service areas:

- Agricultural Education
- Business Education
- Health Occupation Education
- Family and Consumer Sciences Education
- Industrial Education
- Marketing Education

Admission Criteria for Career and Technical Education (CTE) Courses:

In order to enroll in a career and technical education course, students must successfully complete prerequisite course(s) (if applicable). In order to enroll in a career and technical course offered for concurrent credit through Des Moines Area Community College, students must have passed prerequisite course(s) (if applicable) or be identified as talented and gifted. Lack of English language skill will not be barrier to admission and participation in Winterset Community Schools' CTE programs.

It is the policy of the Winterset Community School District not to discriminate on the basis of race, creed, color, sex, religion, marital status (for program), ethnic background, national origin, disability, sexual orientation, gender identity, age (for employment), or socio-economic background (for program) in its educational programs and its employment practices. There is a grievance procedure for processing complaints of discrimination. If you have questions or a grievance related to this policy, please contact the District office at 303 Wambold Dr., Winterset, IA or call 515.462.2718. The District's Equity Coordinator is Corey St. John Director of Teaching & Learning (cstjohn@winterset.k12.ia.us)

Asbestos Notification – September 2020

The Asbestos Management Plan for Winterset Community Schools is on file and available for review at the office of Ray Dawson at 923 East Lane Street in Winterset. The periodic surveillance required by the plan was performed on June 10, 2021, and the required three-year re-inspection was completed July 28, 2022.

Asbestos locations in the District as identified in the Asbestos Management Plan re-inspection July 28, 2022 are as follows:

- High School
- Elementary School

Specific locations are indicated in the Management Plan and are available for review. Asbestos locations are not accessible to students or the public and are assessed low risk.

Questions should be directed to Physical Operations Director, Ray Dawson at (515) 462-2550.

Corporal Punishment, Restraint, and Physical Confinement and Detention

State law forbids district employees from using corporal punishment against any student. Board Policy series 500. Certain actions by district employees are not considered corporal punishment. Additionally, district employees may use "reasonable and necessary force, not designed or intended to cause pain" to do certain things such as prevent harm to persons or property. Employees are provided annual training on this law.

State law also places limits on district employees' abilities to restrain or confine and detain any student. The law limits why, how, where, and for how long a school employee may restrain or confine and detain a child. If a child is restrained or confined and detained, the school must maintain documentation and must provide certain types of notice to the child's parent.

If you have any questions about this state law, please contact your school. The complete text of the law and additional information is available on the Iowa Department of Education's website: www.educateiowa.gov.

Equal-Educational Opportunity

Winterset Community School District does not discriminate based on race, color, creed, religion, national origin, sex, gender, identity, age, disability, marital status, sexual orientation, physical attributes, physical or mental ability or disability, ancestry, political party preference, military affiliation, socioeconomic status or familial status in its educational programs, activities, or employment policies as required by Title IV and Title XIII of the 1964 Civil Rights Act, Title IX of the 1972 Education Amendment, Federal Rehabilitation Act of 1973, and the Iowa Code #216.9.

Students are educated in programs which foster knowledge of, and respect and appreciation for, the historical and contemporary contributions of diverse cultural groups, as well as men and women, to society. Students who feel they have been discriminated against may direct inquiries and grievances to Superintendent of Schools, 303 Wainbold Dr., PO Box 30, Winterset, IA 50273, (515) 462-2718, or the Director of Iowa Civil Rights Commission, 500 West Madison Street, Suite 2800, Chicago, IL 60661. Staff and others may contact the district Affirmative Action Coordinator. The Affirmative Action Coordinator can be reached at (515) 462-2718. Inquiries may also be directed in writing to the Director of the Region VII Office of Civil Rights, U.S. Department of Education, 8930 Ward Parkway, Suite 2037, Kansas City, MO 64114, (816) 268-0550, or the Iowa Department of Education, Grimes State Office Building, Des Moines, IA 50319-0146, (515) 281-5294.

Fees

The district charges fees for certain items, such as textbook rental. Students whose families meet the income guidelines for free and reduced price lunch, the Family Investment Program (FIP), transportation assistance under open enrollment, or students who are in foster care are eligible to have their student fees waived or partially waived. Students whose families are experiencing a temporary financial difficulty may be eligible for a temporary waiver of student fees. Parents or students who believe they may qualify for temporary financial assistance should contact their school secretary for a waiver form. This waiver does not carry over from year to year and must be completed annually. A schedule of school district fees can be found in the handbook.

Free and Reduced Meals Program

If your total household income is within the limits set by the federal government, you may be eligible for either free or reduced-price school meals. If you qualify for free or reduced-price meals, you may also be eligible for food assistance benefits from the State of Iowa, Department of Human Services (DHS).

If you need an application or information about free and reduced food guidelines, please contact the Administration Office at (515) 462-2718.

For information about state food assistance benefits, contact 1-877-937-3663 (1-877-YES-FOOD), or apply online at www.yesfood.iowa.gov.

Grievance Procedure

It is the policy of the Winterset Community School District not to discriminate on the basis of race, color, national origin, sex, disability, religion, creed, age (for employment), marital status (for programs), sexual orientation, gender identity and socioeconomic status (for programs) in its educational programs and its employment practices. There is a grievance procedure for processing complaints of discrimination. If you have questions or a grievance related to this policy please contact Equity Coordinator, 303 Wambold Dr., Winterset, IA [\(515\) 462-2718](tel:5154622718).

Students, parents of students, employees, and applicants for employment in the school district have the right to file a formal complaint alleging discrimination. The district has policies and procedures in place to identify and investigate complaints alleging discrimination. If appropriate, the district will take steps to prevent the recurrence of discrimination and to correct its discriminatory effects on the Complainant and others.

A Complainant may attempt to resolve the problem informally by discussing the matter with a building principal or a direct supervisor. However, the Complainant has the right to end the informal process at any time and pursue the formal grievance procedures outlined below. Use of the informal or formal grievance procedure is not a prerequisite to the pursuit of other remedies. Please note that informal processes and procedures are not to be used in certain circumstances (e.g., sexual harassment and sexual assault).

Filing a Complaint

A Complainant who wishes to avail himself/herself of this grievance procedure may do so by filing a complaint with the equity coordinator. An alternate will be designated in the event it is claimed that the equity coordinator or superintendent committed the alleged discrimination or some other conflict of interest exists. Complaints shall be filed within 5 working days of the event giving rise to the complaint or from the date the Complainant could reasonably become aware of such occurrence. The Complainant will state the nature of the complaint and the remedy requested. The equity coordinator shall assist the Complainant as needed.

Investigation

Within 15 working days, the equity coordinator will begin the investigation of the complaint or appoint a qualified person to undertake the investigation (hereinafter "equity coordinator"). If the Complainant is under 18 years of age, the equity coordinator shall notify his or her parent(s)/guardian(s) that they may attend investigatory meetings in which the Complainant is involved. The complaint and identity of the Complainant, Respondent, or witnesses will only be disclosed as reasonably necessary in connection with the investigation or as required by law or policy. The investigation may include, but is not limited to the following:

- A request for the Complainant to provide a written statement regarding the nature of the complaint;
- A request for the individual named in the complaint to provide a written statement;
- A request for witnesses identified during the course of the investigation to provide a written statement;
- Interviews of the Complainant, Respondent, or witnesses;
- An opportunity to present witnesses or other relevant information; and
- Review and collection of documentation or information deemed relevant to the investigation.

Within 60 working days, the equity coordinator shall complete the investigation and issue a report with respect to the findings. The equity coordinator shall notify the Complainant and Respondent of the decision within 5 working days of completing the written report. Notification shall be by U.S. mail, first class.

Decision and Appeal

The complaint is closed after the equity coordinator has issued the report, unless within 5 working days after receiving the decision, either party appeals the decision to the superintendent by making a written request detailing why he/she believes the decision should be reconsidered. The equity coordinator shall promptly forward all materials relative to the complaint and appeal to the superintendent. Within 30 working days, the superintendent shall affirm,

reverse, amend the decision, or direct the equity coordinator to gather additional information. The superintendent shall notify the Complainant, Respondent, and the equity coordinator of the decision within 5 working days of the decision. Notification shall be by U.S. mail, first class. The decision of the superintendent shall be final.

Handbooks and Board Policies

Each year, students/parents may receive a copy of the student/parent handbook. Handbooks and school board policies are posted on the district website at www.winterset.k12.ia.us. Parents are strongly encouraged to review the handbook and policies of the Board of Education with their student so that both understand the regulations and expectations of the district for students. Handbooks include many important annual notices and information about policies students and their parents are responsible for knowing and understanding. Ignorance of the contents of the handbooks and the policies of the Board of Education excuses no one from complying with these regulations.

Highly Qualified Teachers/Title 1 Parent Notification

The Winterset Community School District ensures that parents will be notified in writing if their child has been assigned, or has been taught by a teacher for four or more consecutive weeks by a teacher who is not considered highly qualified.

Homeless Students

In accordance with 281 IAC Chapter 33, Iowa Administrative Code, the Winterset Community School District is required to give written notice to homeless children and families if the district is going to deny access to their educational programs. Homeless children and families may obtain free legal services by contacting:

Legal Aid Society of Polk County
1111 9th Street – 3rd Floor
Des Moines, IA 50314
1-515-243-1193

Chapter 33 of the Iowa Administrative Code defines "homeless child or youth" as a child or youth from the age of three years through 21 years who lacks a fixed, regular, and adequate nighttime residence and includes the following:

- A child or youth who is sharing the housing for other persons due to loss of housing, economic hardship, or a similar reason; is living in a motel, hotel, trailer park, or camping grounds due to the lack of alternative adequate accommodations; is living in an emergency or transitional shelter; is abandoned in a hospital; or is awaiting foster care placement
- A child or youth who has a primary nighttime residence that is a public or private place not designed for or ordinarily used as a regular sleeping accommodation for human beings
- A child or youth who is living in a car, park, public space, abandoned building, substandard housing, bus or train station or similar setting, or
- A migratory child or youth who qualifies as homeless because the child or youth is living in circumstances described in paragraphs "1" through "3" above

Human Growth and Development

The district provides students with instruction in human growth and development. Parents may review this curriculum prior to its use and have their child excused from human growth and development instruction. Parents should contact the classroom teacher, if they wish to review the curriculum or to excuse their child from human growth and development instruction.

Internet Use and Opt-Out

The Winterset Community School District offers a variety of online tools for students and teachers on the district website. Depending upon the class, students may have opportunities to download class materials, complete assignments online, participate in classroom moderated blogs, and use the internet for research and more. Because

of these expanded capabilities, we offer the opportunity for parents to opt children out of Web use in this manner. We ask that you read the notice below, and only return the form to your school office if you do not agree to the terms within. The form is available at registration or in any school office.

Internet Use Statement – As a parent or legal guardian of a student enrolled in Winterset Community School District, I recognize that in accordance with School Board Policy, my student has access to district-owned and operated computer systems, networks, and the Internet. Some of these systems are interactive in nature, and allow my student to participate in online activities designed to enhance and extend classroom learning opportunities. I understand that this access is delivered under the direct supervision of a teacher or other trained adult employee.

Furthermore, I understand that while the Winterset Community School District strives to provide protection from all objectionable material found on the Internet, some objectionable material is impossible to filter and may inadvertently be accessed. I, as parent or legal guardian, accept responsibility for guidance of appropriate Internet use as it pertains to the exploration and selection of media and information.

Form Instructions:

- If you agree with the terms above: No further action is necessary.
- If you do not agree with the terms above: Please fill out and return the internet opt-out form to your student's school. If you have more than one student you wish to opt-out of Web use, please print additional copies and fill one out for each student. If you have questions about the form, please call (515) 462-2718.

Iowa Concussion Legislation

Effective July 1, 2011, Iowa law requires that students in grades 7 – 12 who participate in extracurricular interscholastic activities, cheerleading and dance; and their parents/guardians; must sign a copy of the acknowledgement form and return it to their school.

Students cannot practice or compete in those activities until this form is completed.

In addition, please note this important information from Iowa Code Section 280.13C, Brain Injury Policies:

A child must be immediately removed from participation (practice or competition) if his/her coach or a contest official observes signs, symptoms, or behaviors consistent with a concussion or brain injury in an extracurricular interscholastic activity.

A child may not participate again until a licensed health care provider trained in the evaluation and management of concussions and other brain injuries has evaluated him/her and the student has received written clearance from that person to return to participation.

Key definitions:

"Licensed health care provider" means a physician, physician assistant, chiropractor, advanced registered nurse practitioner, nurse, physical therapist, or athletic trainer licensed by a board.

"Extracurricular interscholastic activity" means any extracurricular interscholastic activity, contest, or practice, including sports, dance, or cheerleading.

Level I Investigator: Abuse

The district does not tolerate employees physically or sexually abusing or harassing students. Students who are physically or sexually abused or harassed by an employee should notify their parents, teacher, principal or another employee. The Iowa Department of Education has established a two-step procedure for investigating allegations of physical or sexual abuse of students by employees. That procedure requires the district to designate an independent investigator to look into the allegations. The district has designated the school nurses: Nicole Anderson (PreK-3), Brittany Salton (4-6), and Mackenzie Osburn (7-12) at (515) 462-2718, as Level I investigators.

Physical abuse is a non-accidental physical injury that leaves a mark at least 24 hours after the incident. While employees cannot use physical force to discipline a student, there are times when the use of physical force is

appropriate. The times when physical force is appropriate include, but are not limited to, times when it is necessary to stop a disturbance, to obtain a weapon or other dangerous object, for purposes of self-defense or to protect the safety of others, to remove a disruptive student, to protect others from harm, for the protection of property or to protect a student from self-infliction or harm.

Sexual abuse includes, but is not limited to, sexual acts involving a student and intentional sexual behavior as well as sexual harassment. Sexual harassment is unwelcome sexual advances, requests for sexual favors or other verbal or physical contact of a sexual nature when submission to such conduct is made either implicitly or explicitly a term or condition of the student's education or benefits; submission to or rejection of the conduct is used as the basis for academic decisions affecting that student; or the conduct has the purpose or effect of substantially interfering with a student's academic performance by creating an intimidating, hostile or offensive educational environment.

Notice to Parents Regarding Teacher Qualifications

Parents/Guardians in the Winterset Community School District have the right to learn about the following qualifications of their child's teacher: state licensure requirements for the grade level and content areas taught, the current licensing status of your child's teacher, and baccalaureate/graduate certification/degree. You may also request the qualifications of an instructional paraprofessional who serves your student in a Title 1 program.

Parents/Guardians may request this information from the Office of the Superintendent by calling (515) 462-2718 or sending a letter of request to Office of the Superintendent, PO Box 30, 303 Warbold Dr., Winterset, IA 50273

Open Enrollment

Iowa's open enrollment law allows students residing in one school district to request transfer to another school district upon the parents' request. Students wishing to open enroll to another school district must apply for open enrollment. Open enrolled students from low-income families may qualify for transportation assistance. Winterset Community School District will accept students for open enrollment. You may reference Winterset Board of Education policies on open enrollment on the Winterset Community School District website. Please contact Business Manager for open enrollment questions at (515) 462-2718.

Parents' Roles During Emergencies

Providing a safe place for students to learn and grow is one of the most important responsibilities of any school system. Along with school officials, teachers and staff, families play a critical role in preventing and responding to emergencies. This information is intended to provide parents and guardians with the steps you can take before, during and after an emergency. It is the ABC's of the parent's role during emergencies.

A. Before

Preventive: The Role of Parents in Keeping Schools Safe – Parents and community members play an important role in keeping our schools safe. You can be our eyes and ears by reporting any issues, concerns or rumors related to safety to district or law enforcement officials. Two hotline numbers that are answered 24/7:

- Iowa Health Systems – (515) 244-1000
- Mercy Franklin Center – (515) 271-6111

You also can help by following and supporting all security measures when you visit one of our school buildings. This includes signing in and out at all school district offices and wearing a visitor's badge at all times while in the building.

Contact Information: Another of the most important steps parents can take prior to an emergency is to ensure contact information is updated regularly in the district's Infinite Campus system. Please regularly update emergency and contact telephone numbers, e-mail addresses and other information with your school to ensure you receive information and updates during emergency situations.

It is also important to review and update information regarding who can legally pick-up your child during an emergency. Once this information is on file, you should ensure that those people are aware they have been listed as

your "emergency contacts", and that they may receive messages via phone and/or e-mail during an emergency, weather early out, or other situation.

If your child is on medication, be sure the school has at least a two-day supply.

Create your own family emergency plan. Develop a family communication plan and have a supply kit to sustain you and your family for two to three days. For tips on how to prepare a plan go to www.bersadycwa.org.

B. During

In a school emergency, the first instinct of many parents is to pick up the telephone and call their child or school, and/or rush to the school to get their children. But the truth is, this only complicates matters from a safety and security standpoint. Parents too close to an incident often hinder rescue attempts of the police and fire officials on the scene. Calling your child's cell phone may prevent them from hearing important, even life-saving information. Too many parents calling the school also tie up needed phone lines and hinder efforts to communicate. Students will be able to use cell phones if they need immediate assistance and once they are safe.

The best action parents can take in an emergency is to monitor their phone, e-mail and district website for regular updates and instructions.

- Do not report to your child's school during emergency situations. Law enforcement officials will not allow entry to the school site during a lockdown or shelter-in-place.
- Avoid calling the school or the district during the emergency.

Notification and Communication: The district is committed to providing parents and guardians with the latest and most accurate information available. Parents will be asked to monitor official emergency updates at the district's website. In today's world, it is likely students will be texting and calling parents immediately. Be aware that information you receive from your child may not always be accurate; ensure the information you are using is official and comes directly from the Winterset Community School District.

School Emergency Response Protocols: A school crisis can take a number of forms including an environmental event, such as a chemical spill or gas leak; a weather emergency, such as a tornado warning; or an intruder in or near the school. The nature of a school crisis dictates whether district officials will put in place a lockdown, shelter-in-place, evacuation, or any combination of two of these protocols, as a means to ensure the safety and wellbeing of students and staff.

When and Why are Students and Staff Asked to Lockdown, Shelter-in-Place or Evacuate?

- **Lockdown** – A lockdown is normally in effect when there is a threat inside the building. Students and staff are removed from harm's way by having them safely located inside secure classrooms or other areas inside the building to reduce the risk of being exposed to the source of potential harm. During lockdowns access to the building is prohibited.
- **Shelter-in-Place** – Shelter-in-place is instituted when the threat is outside the building. Students and staff are secured inside a classroom or other areas inside the building reducing the risk for exposure to inclement weather or other potential harm such as a gas release.
- **Evacuation** – Evacuations are typically conducted to remove students and staff from harm's way by having them safely evacuate the school and reassemble in a more secure location.

If the school building is evacuated, how will I be able to locate my child?

- Parents will be directed to a specific location where they will be required to show proper identification. At the reunification site, school administrators, police and fire officials account for students and provide aide to those who need it immediately. Students are released only to authorized individuals. If you are a non-custodial parent, you must be listed with your child's emergency contact information as a guardian and show proper identification.

C. After

Monitor your child's behavior and let the school know if you think counseling or help is needed. Following a school crisis, specially trained school and district crisis team members and social workers are available to provide counseling and outside referrals to students, staff members and others who may need it.

Recovery Plan – Depending on the nature and amount of damage, school maybe moved to a different location. The district will inform parents of any changes.

Protection of Pupil Rights Amendment

PPRA affords parents certain rights regarding our conduct of surveys, collection and use of information for marketing purposes, and certain physical exams. These include the right to:

1. Consent before students are required to submit to a survey that concerns one or more of the following protected areas ("protected information survey") if the survey is funded in whole or in part by a program of the U.S. Department of Education:
 - a. Political affiliations or beliefs of the student or student's parent;
 - b. Mental or psychological problems of the student or student's family;
 - c. Sex behavior or attitudes;
 - d. Illegal, anti-social, self-incriminating, or demeaning behavior;
 - e. Critical appraisals of others with whom respondents have close family relationships;
 - f. Legally recognized privileged relationships, such as with lawyers, doctors, or ministers;
 - g. Religious practices, affiliations, or beliefs of the student or parents; or
 - h. Income, other than as required by law to determine program eligibility.
2. Receive notice and an opportunity to opt a student out of:
 - a. Any other protected information survey regardless of funding;
 - b. Any non-emergency, invasive physical exam or screening required as a condition of attendance, administered by the school or its agent, and not necessary to protect the immediate health and safety of a student, except for hearing, vision, or scoliosis screenings, or any physical exam or screening permitted or required under state law; and
 - c. Activities involving collection, disclosure, or use of personal information obtained from students for marketing or to sell or otherwise distribute the information to others.
3. Inspect, upon request and before administration or use –
 - a. Protected information surveys of students;
 - b. Instruments used to collect personal information from students for any of the above marketing, sales, or other distribution purposes; and
 - c. Instructional material used as part of the educational curriculum.

These rights transfer from the parents to a student who is 18 years old or an emancipated minor under state law. Winterset Community School District will develop and adopt policies, in consultation with parents, regarding these rights, as well as arrangements to protect student privacy in the administration of protected information surveys and the collection, disclosure, or use of personal information for marketing, sales or other distribution purposes. Winterset Community School District will directly notify parents of these policies at least annually at the start of each school year and after any substantive changes.

Winterset Community School District will also directly notify, such as through U.S. mail, or e-mail, parents of students who are scheduled to participate in the specific activities or surveys noted below and will provide an opportunity for the parent to opt his or her child out of participation of the specific activity or survey. The district will make this notification to parents at the beginning of the school year if the district has identified the specific or approximate dates of the activities or surveys at the time. For surveys and activities scheduled after the school year starts, parents will be provided reasonable notification of the planned activities and surveys listed below and are provided an opportunity to opt their child out of such activities and surveys. Parents will also be provided an opportunity to review any pertinent surveys. Following is a list of the specific activities and surveys covered under this requirement:

- Collection, disclosure, or use of personal information for marketing, sales or other distribution. Administration of any protected information survey not funded in whole or in part of the education department.
- Any non-emergency, invasive physical examination or screening as described above.

Parents who believe their rights have been violated may file a complaint with:

Family Policy Compliance Office
400 Maryland Avenue, SW
Washington, DC 20202-5901

Section 504 – Notice of Rights

Winterset Community School District does not discriminate in admission or access to, or treatment or employment in, its programs and activities. Section 504 of the 1973 Rehabilitation Act is a non-discrimination statute having discrimination on the basis of disability. It is the policy of the district not to discriminate on the basis of disability in its educational programs, activities, or employment policies as required by the Act. The 1973 Rehabilitation Act requires the district to locate, evaluate, and determine if the student is a qualified individual requiring accommodation necessary to provide access to educational programs.

Parents are entitled to the opportunity to review relevant educational records under the Family Education Rights and Privacy Act (FERPA). The requirements are described in the Board of Education Policy Manual that is available on the district's website (www.winterset.k12.ia.us). Parents/guardians disagreeing with the decisions reached by district personnel regarding necessary accommodations for access to the educational program may request a hearing before an impartial hearing officer by notifying the district's ADA/Section 504 Coordinator. The parent/guardian is entitled to participate in the hearing and to be represented by counsel.

Student Directory Information-Policy 506.2

Student directory information is designed to be used internally within the school district. Directory information is information contained in the education records of a student that would not generally be considered harmful or an invasion of privacy if disclosed. The district may disclose "directory information" to third parties without consent if it has given public notice of the types of information which it has designated as "directory information," the parent's or eligible student's right to restrict the disclosure of such information, and the period of time within which a parent or eligible student has to notify the school in writing that he or she does not want any or all of those types of information designated as "directory information." The district has designated the following as "directory information"

- Student's name
- Address
- Telephone listing
- Electronic mail address
- Photograph
- Date and place of birth
- Major field of study
- Date of attendance
- Grade level
- Participation in officially recognized activities and sports
- Weight and height of member of athletic teams
- Degrees, honors, and awards received
- The most recent educational agency or institution attended
- Student ID number, user ID, or other unique personal identities used to communicate in electronic system that cannot be used to access education records without a PIN, password, etc. (A student's SSN, in whole or in part, cannot be used for this purpose.)

Student is defined as an enrolled individual, PK-12 including children in school district sponsored child-care programs.

Prior to developing a student directory or to give general information to the public, parents (including parents of students open enrolled out of the school district and parents of children home schooled in the school district) will be given notice annually of the intent to develop a directory or to give out general information and have the opportunity to deny the inclusion of their child's information in the directory or in the general information about the students.

It is the responsibility of the superintendent to provide notice and determine the method of notice that will inform parents.

Student Media Interviews

During the course of the school year, students may be interviewed from time to time by newspaper, television, radio or other reporters in regard to projects, activities and other school events. This is considered a part of the district's directory information consent policy (Student Records, see below), along with photos, video and other media. If you object to your student being interviewed in this manner, you should read and fill out the district's directory information opt-out form. To obtain a copy of this form, please contact your school's main office.

Use of Recording Devices in School Buildings and on School Buses- Policy 802.08

District-Owned and Operated Recording Devices

The Winterset Board of Education supports the use of recording devices in District buildings, on school grounds and on District buses used for transportation to and from school as well as for field trips, curricular, or extracurricular events. Recording devices may be used as a means to monitor and maintain order and to help promote a safe environment for students and employees.

Recording devices may be used on school buses and other district vehicles and in public areas of the school buildings. Recording devices will not be placed or be used in bathrooms, shower facilities, locker rooms, or other similar spaces where privacy is reasonably presumed. Determination of how recording devices will be used and which areas of the school will be equipped with recording equipment will be made in consultation with the building principals and Director of Operations.

The contents of the recordings may be used as evidence in student or employee disciplinary proceedings, and also for regular driver training and improvement on an individual or group basis. The content of the recordings may be considered a confidential education record and/or a confidential personnel record. Such records will be handled in accordance with applicable law and Board policies regarding access to and disclosure of student and personnel records. Parents may request to view a recording which is an education record of their child to the extent permitted by law.

Notice

The school District will annually provide the following notice to students and parents:

The Winterset Community School District Board of Directors has authorized the use of recording devices in legally authorized locations in District buildings on school District buses. The recording devices will be used to help monitor and to maintain order in school buildings and on school buses to promote and maintain a safe environment for students and employees. Students and parents are hereby notified that the recording may be used in a student or employee disciplinary proceedings. The content of the recordings may be a confidential education record and handled in accordance with applicable law and Board policies regarding access to and disclosure of education records. Recording will be retained, if necessary, for use in a student or employee disciplinary proceeding or other matters as determined necessary by the administration. Parents may request to view recording which are an education record of their child to the extent permitted by law.

The following notice will also be placed on all school buses equipped with a recording device:

"This bus is equipped with a recording/audio monitoring system."

The following notice will also be placed at District buildings:

"These premises are monitored by a recording monitoring system as permitted by Iowa law."

Review of Recording Devices

Authorized personnel of the school District may review the recordings randomly or when necessary as a result of an incident. The recordings not otherwise saved will be routinely re-circulated for erasure.

Viewing of the recordings is limited to the school personnel having a legal right or legitimate educational purpose. A written log will be kept of those individuals viewing the recordings stating the time, name of individual viewing and the date the recordings was viewed.

Student Conduct

Students are prohibited from tampering with the recording devices on the school buses or District buildings. Students found in violation of this regulation will be disciplined in accordance with the school District discipline policy and will reimburse the school District for any repairs or replacement necessary as a result of the tampering.

Recording by Parents, Students or Visitors

Photography and recording audio or video is generally prohibited during the instructional day on District property, as it frequently materially interferes with the District's educational mission. Students, visitors, parents/guardians of students, and community members may take photographs, record audio or video or livestream public events held at school and may only do so during non-public events if authorized in advance to do so by a school staff member. A staff member may take photographs, record audio or video or livestream only if doing so assists in fulfilling the staff member's duties.

Recordings by Employees

No employee may make an unauthorized audio or visual recording of a conversation or meeting pertaining to District business unless the employee making the recording notifies all participants in the conversation or meeting of the recording. An employee making an authorized recording shall ensure that the recording device is located in plain view for the duration of the conversation or meeting. Secret recordings are prohibited and the use of these recordings may lead to disciplinary action, up to, and including termination.

These provisions are not intended to limit or restrict recordings involving authorized investigations conducted by District personnel or any meeting recorded in accordance with Board policy, including Board meetings, grievance hearings, and audio recordings of meetings or proceedings at which the substance of an employee grievance is discussed.

Monitoring Devices

A parent or student shall obtain approval from the principal before operating technology allowing for remote recording or listen-in capability at school or at school-sponsored events. Because of student privacy concerns, the District requires remote listen-in technology to be disabled while the device is on District property. The District prohibits unauthorized audio or visual recordings or transmission of audio or images of other students.

Water Testing

The Iowa Department of Public Health requires school districts to conduct testing of all water coolers and fountains for lead-containing sediment. The Writtersel Community School District has completed the required testing of all district water coolers and fountains. All water dispensers have been identified below 20 ppb (0.020 mg/liter) as required by law. Additional information regarding specific testing results may be obtained by contacting the Director of Support Services at (515) 462-2230.

Stay Connected with WCSD!

Online Registration is NOW OPEN!

Winterset Community School District
Excellence In Mind

MENU SCHOOLS ENG



Upgraded Website/ App:

- www.winterset.k12.ia.us
- District homepage updated weekly
- School homepages are updated frequently with information
- Daily calendar of events for schools as well as athletics/activities is located on district homepage

Electronic Backpacks:

- Located on both the district and school homepages - includes fliers, newsletters, important and timely information

Facebook:

- Winterset Community School District:
[@winterset.schools](https://www.facebook.com/winterset.schools)
- Winterset Huskies for Athletics and Activities updates:
[@WintersetHuskies](https://www.facebook.com/WintersetHuskies)
- All buildings now have their own Facebook and Twitter Accounts

Instagram:

[@Winterset.schools](https://www.instagram.com/winterset.schools)



Winterset Community School District

Published by Apptegy · 2h ·

Last week we practiced a lot of routines so we could get really good at them and build community! [#wintsethuskypride](https://twitter.com/wintsethuskypride)



WintersetSchools @WintersetSchool · Aug 23

We had such a great day today! Day 1 is in the books 🐾🐾
[#wintsethuskypride](https://twitter.com/wintsethuskypride) [#allin](https://twitter.com/allin)



Twitter:

- WintersetSchools: [@WintersetSchool](https://twitter.com/WintersetSchool)
- Winterset Huskies for Athletics and Activities updates: [@WintersetHusky](https://twitter.com/WintersetHusky)

Infinite Campus:

- Must have a **portal account** - contact your school's office or the Administration Building to request account

Madisonian:

- Article by Superintendent every other week