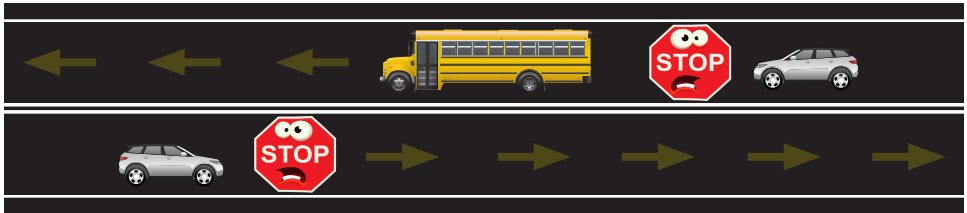


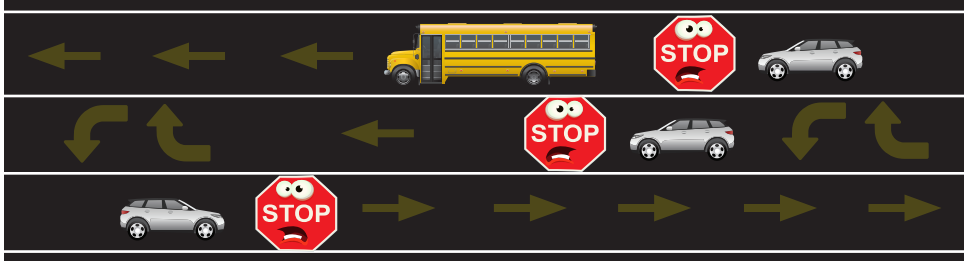


KENTUCKY SCHOOL BUS STOP LAW



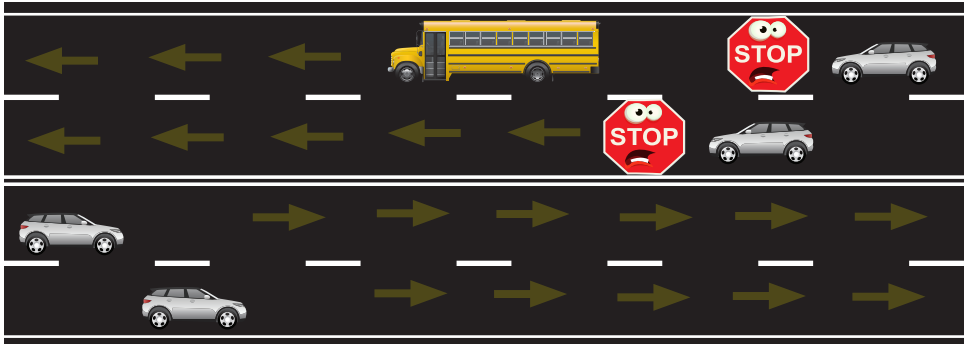
↑ 2 LANE ROADWAY

When school bus stops for passengers, all traffic from both directions must stop.



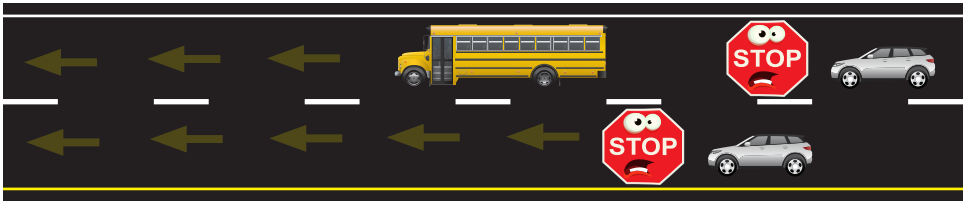
↑ 2 LANE ROADWAY + CENTER TURN

When school bus stops for passengers, all traffic from both directions must stop.

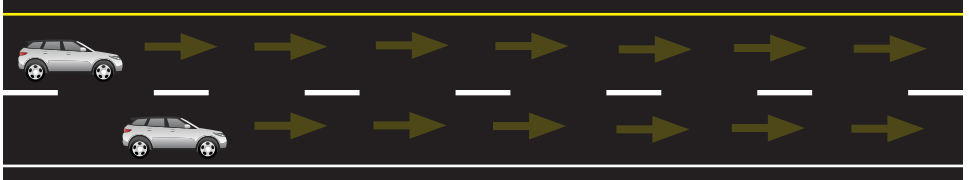


↑ 4 LANE ROADWAY NO MEDIAN SEPARATION

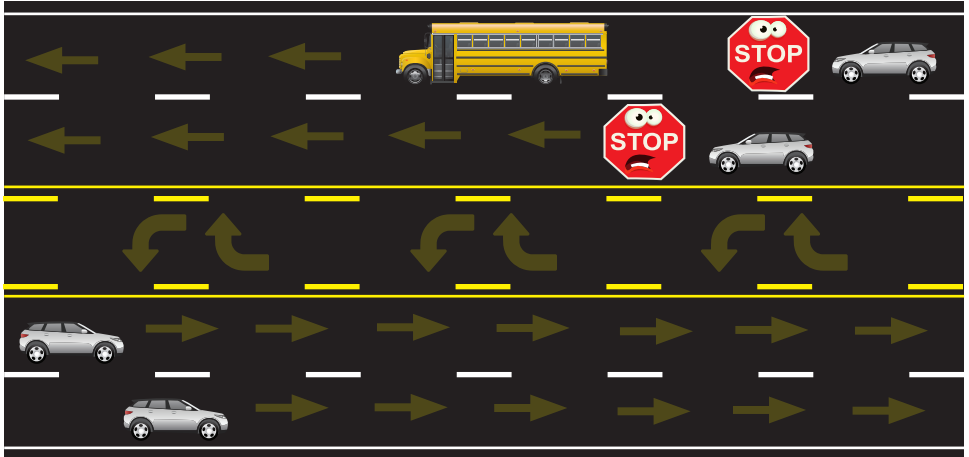
When school bus stops for passengers, only traffic following the bus must stop.



DIVIDED HIGHWAY



↑ 4 LANES + DIVIDED HIGHWAY + MEDIAN SEPARATION
 When school bus stops for passengers, only traffic following the bus must stop.



↑ 4 LANES + ROADWAY + CENTER TURN
 When school bus stops for passengers, only traffic following the bus must stop.

