

3rd Grade's Weekly Broadcast

Mrs. Glymph & Mrs. Rodgers

March 28-April 1

~~Coming up...~~

- iReady Testing- Monday, March 28th
- iReady Testing- Tuesday, March 29th
- Week 31 DLR Quiz- Friday, April 1st
- Studies Weekly Quiz- Friday, April 1st
- Mathbox Quiz- Friday, April 1st
- Multiplication Fluency Quiz- Friday, April 1st
- Ecosystem Test- Friday, April 1st
- TDA Field Testing- Thursday, April 7th
- Math Geometry Unit Assessment- Friday, April 8th



Things to Know

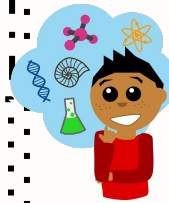
COMMUNICATION HOME: This folder will come home each Wednesday and have important papers from the school, as well as any graded papers for the week. Please initial or sign each graded assignment and return the next day.

Were you absent? Each teacher has a Schoology Course with daily assignments for students that miss school for any reason (quarantined, sick, personal, etc.) Assignments are due one week after it has been posted. If you would like to watch live lessons (if available) please let the teacher know.

Headphones: We use headphones DAILY. Please make sure that students are bringing their headphones.

Laptops: Please make sure students are charging their laptops each night. Students will clip down and walk if they have to charge their laptops.

Toys and fidgets are cute but please do not allow your child to bring them to school. Check bookbags!



WHAT WE ARE LEARNING

Math

- In math this week we are continuing to work on our geometry unit. We are working to classify shapes as quadrilaterals, and polygons, and will begin talking about angles, and giving them a name: obtuse, right, or acute.

Science

- This week we are continuing to present our ecosystems, and will finish up with our unit on ecosystems and take our test Friday.

Social Studies:

- We will be reviewing how to use hemispheres and lines of longitude and latitude to locate continents and oceans. We will be using Studies Weekly Newspaper Week 6. Students will be highlighting important information and study notes.

Reading/Writing

- We are continuing our Literary Essay Unit/ Text-Dependent Analysis unit. Students will be reading and writing about their reading by making claims. We are working with the students to put their thoughts and opinions about the text into their writing and use evidence from their book.
- This week's sight words are: **always, mother, give, friend, birthday, girl, twirling, party, started, chart**

New Reading log is in student's binder. Question codes are located on the back of the paper. Students should read (hopefully a fiction chapter book) for 15 minutes Monday-Thursday evening.



Contact INFORMATION

Mrs. Glymph: dglymph@newberry.k12.sc.us

Mrs. Rodgers: trodders@newberry.k12.sc.us

Your child needs their own pair of **headphones or earbuds**. We use these on a daily basis in all of our classes.

