

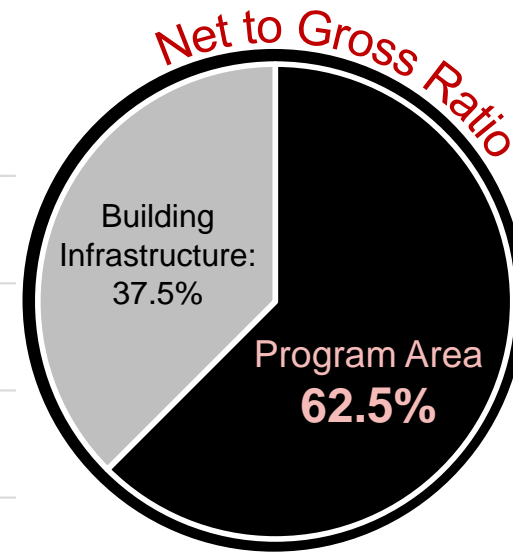
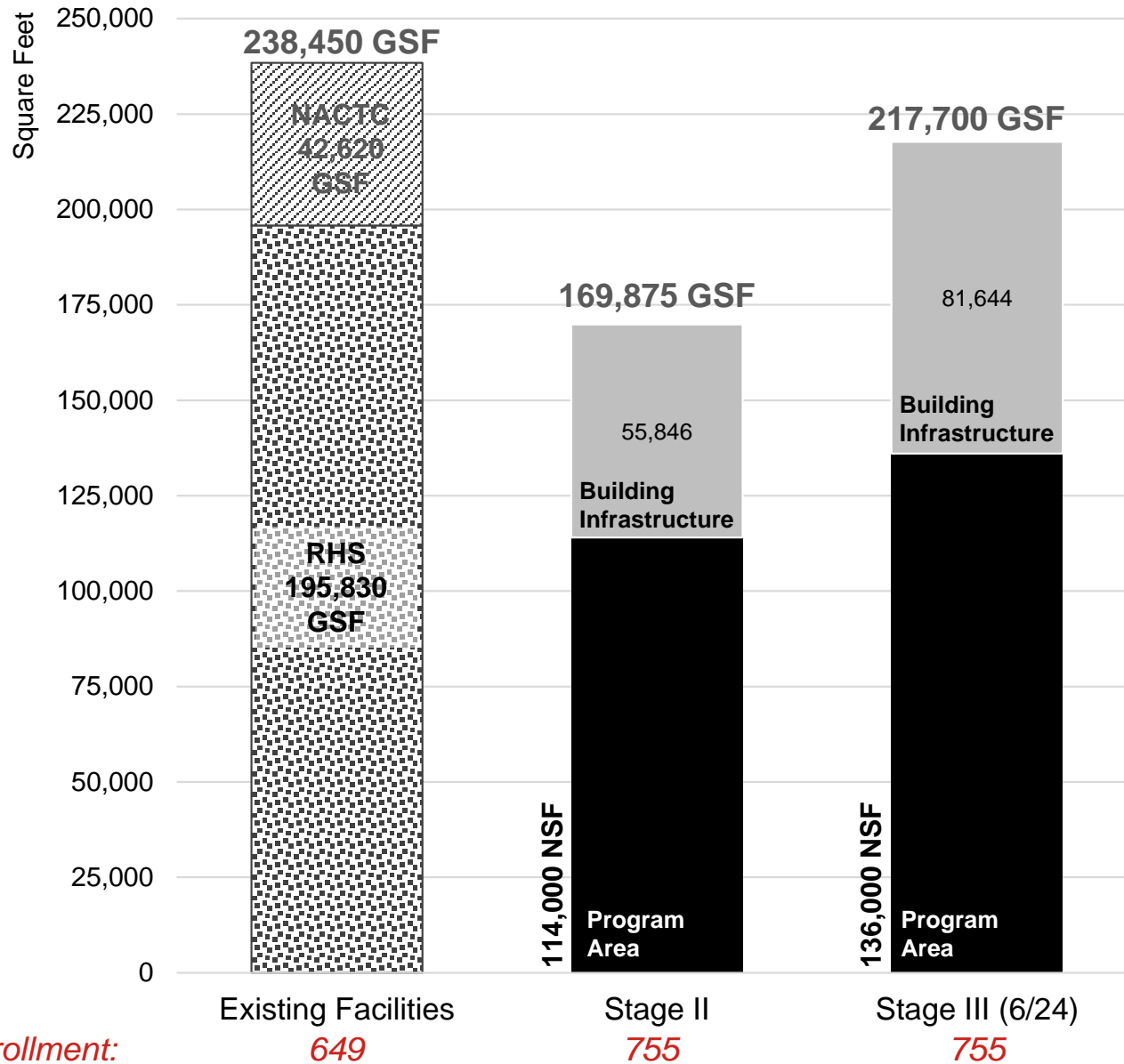
July 1, 2021

Stage III: Program Verification

- Project Goals
- Verification Process Update
- Preliminary Planning



Program Analysis



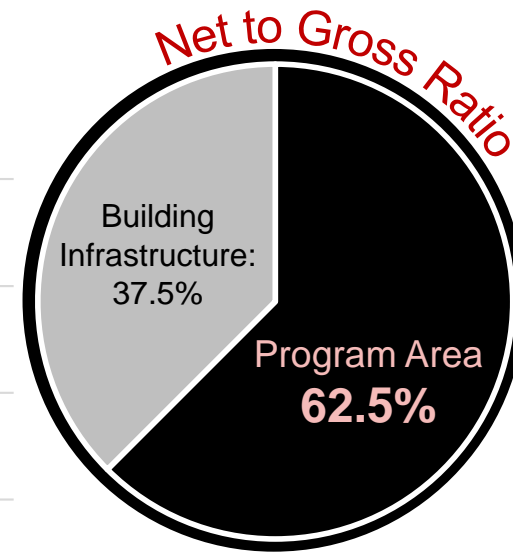
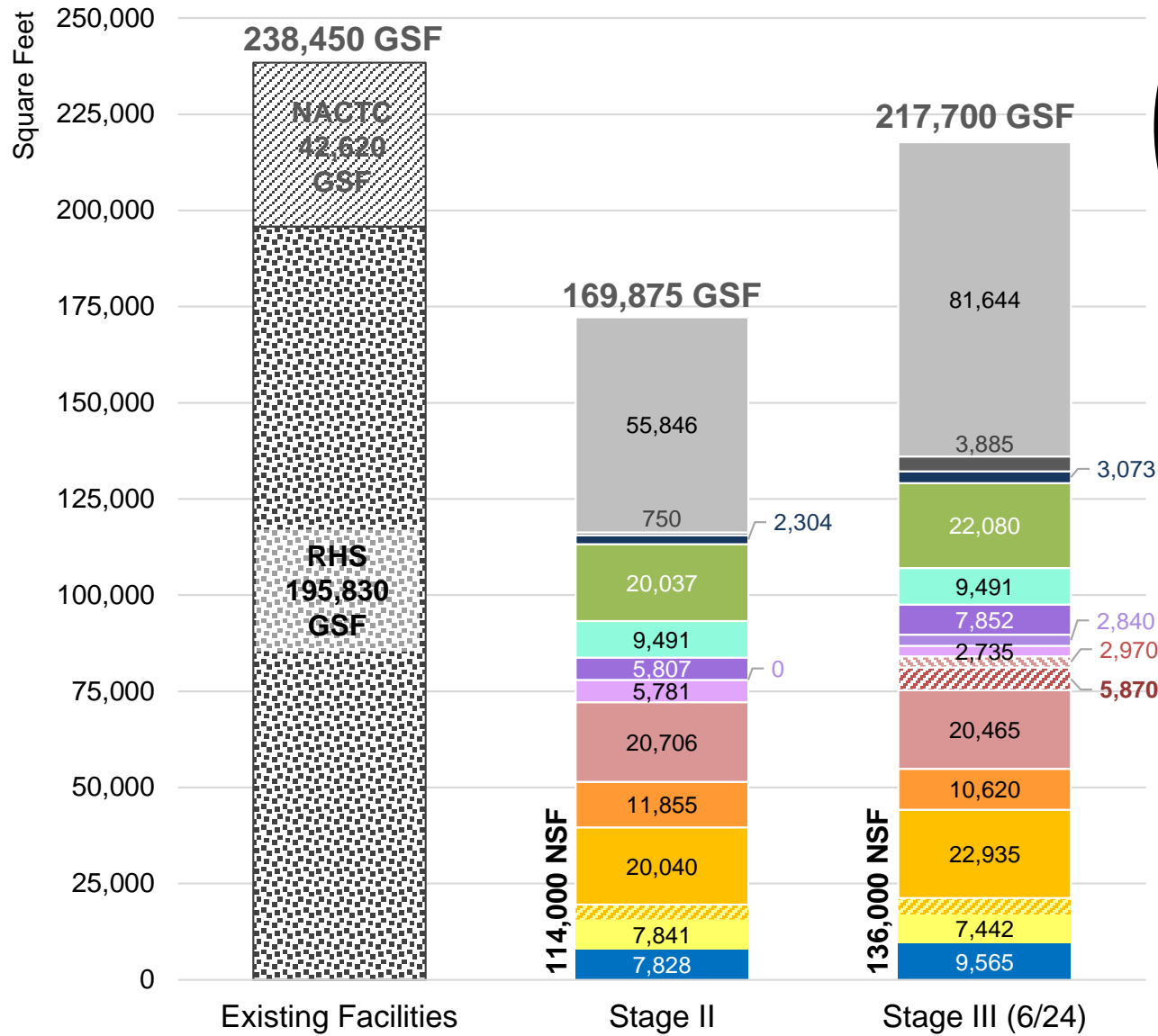
- Building Infrastructure:**
- Horizontal & Vertical Circulation
 - Restrooms
 - Wall Thickness
 - Structure
 - Main & distributed Electrical rooms
 - Main & distributed Data Rooms
 - Boiler / Mechanical Room
 - Fire Pump Room

Enrollment: 649

755

755

Program Analysis

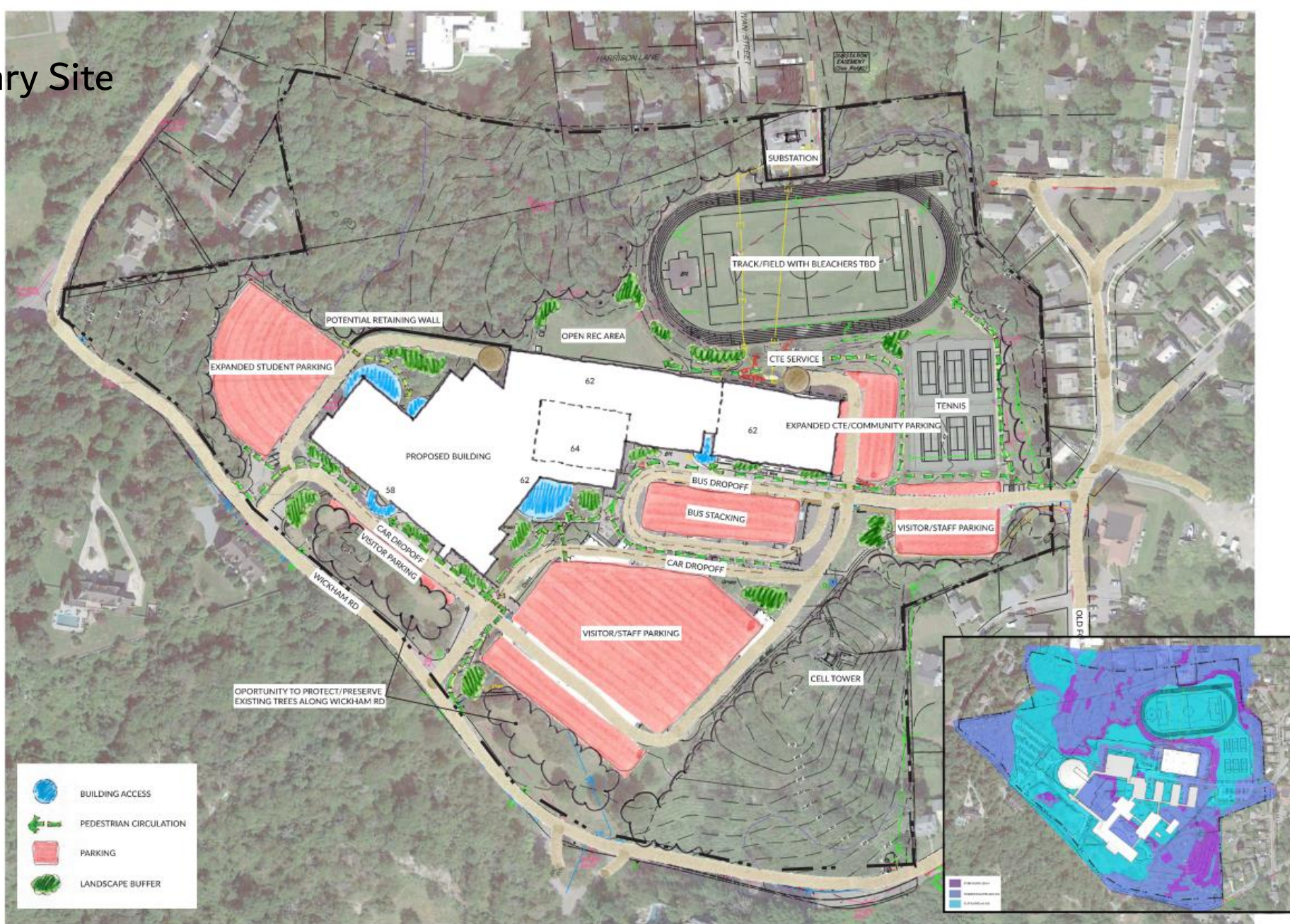


- Central Offices
- Building Infrastructure
- Building Support
- HS Phys Ed
- HS Food Service
- HS Performing Arts
- HS Visual Arts
- HS Learning Commons/ Media
- Cosmetology
- Automotive Tech
- HS CTE/Pathways
- HS Science
- HS Academics
- Alt. Learning Program
- HS Spec Ed
- HS Admin

Program Analysis

<i>Department</i>	<i>Stage II Area (NSF)</i>	<i>Stage III Area (NSF)</i>	<i>Delta (NSF)</i>	<i>Programming Modifications</i>
RHS Administration	7,828	9,565	1,737	Delineated specific staff (increased from 12 to 23 staff); identified & right-sized specific support spaces (conf rms, care closet, mailroom, security, etc.)
Special Ed	7,841	7,442	-399	Delineated specific staff (increased from 2 to 9 staff); identified & right-sized specific support spaces (dedicated toilet rms, equipment storage, etc)
Alt. Learning Program	3,893	4,250	357	Delineated specific staff (1- staff added); added (1) Science CR & Commons/ Break-Out space; Right-sized instructional space per seat;
Academics	20,040	22,935	2,895	Delineated 9th Grade Acad within CRs; delineated Break-out seats; Reduced by (1) CR; right-sized all CRs; Added (2) ELL CR, (1) Literacy CR, & (1) Computer Lab;
Science	11,855	10,620	-1,235	Reduced by (1) C-Lab; right-sized C-Labs and support spaces; (incl. 9th Grade Academy C-Lab)
CTE / Pathways	20,706	20,465	-241	Right-sized Shops & Labs based on instructional stations and equipment inventories; identified support spaces;
- Automotive Tech	0	5,870	5,870	Added Auto Tech Pathway to program;
- Cosmetology	0	2,970	2,970	Added Cosmetology Pathway to program;
Learning Commons / Media	5,781	2,735	-3,046	Identified specific Library / Learning Commons components and shared spaces; (use seating of Café for Library); Right-sized spaces based on estimated volume/ stacks count;
Visual Arts	0	2,840	2,840	Added Art Program; (2- Studios & support spaces)
Performing Arts	5,807	7,852	2,045	Right-sized instructional spaces; identified & right-sized specific components to Black Box Theater based on event attendance numbers;
Food Service	9,491	9,491	0	Food Service Consultant verified Stage II areas;
Phys Ed	20,037	22,080	2,043	Support spaces for Athletics added; PE Multi-Purpose Rm eliminated; Health CR added;
Building Support	750	3,885	3,135	Support spaces added (custodial spaces, vehicle storage, receiving, equipment/ supplies storage, student locker allocation, etc.)
Central Offices	1,843	3,073	1,230	Delineated specific staff; identified and right-sized support spaces (dedicated file storage, waiting, workroom, visiting office, conf rms, etc); added DGSF;
Totals (NSF)	114,000	136,000	22,044	

Preliminary Site



SKETCH LAYOUT A

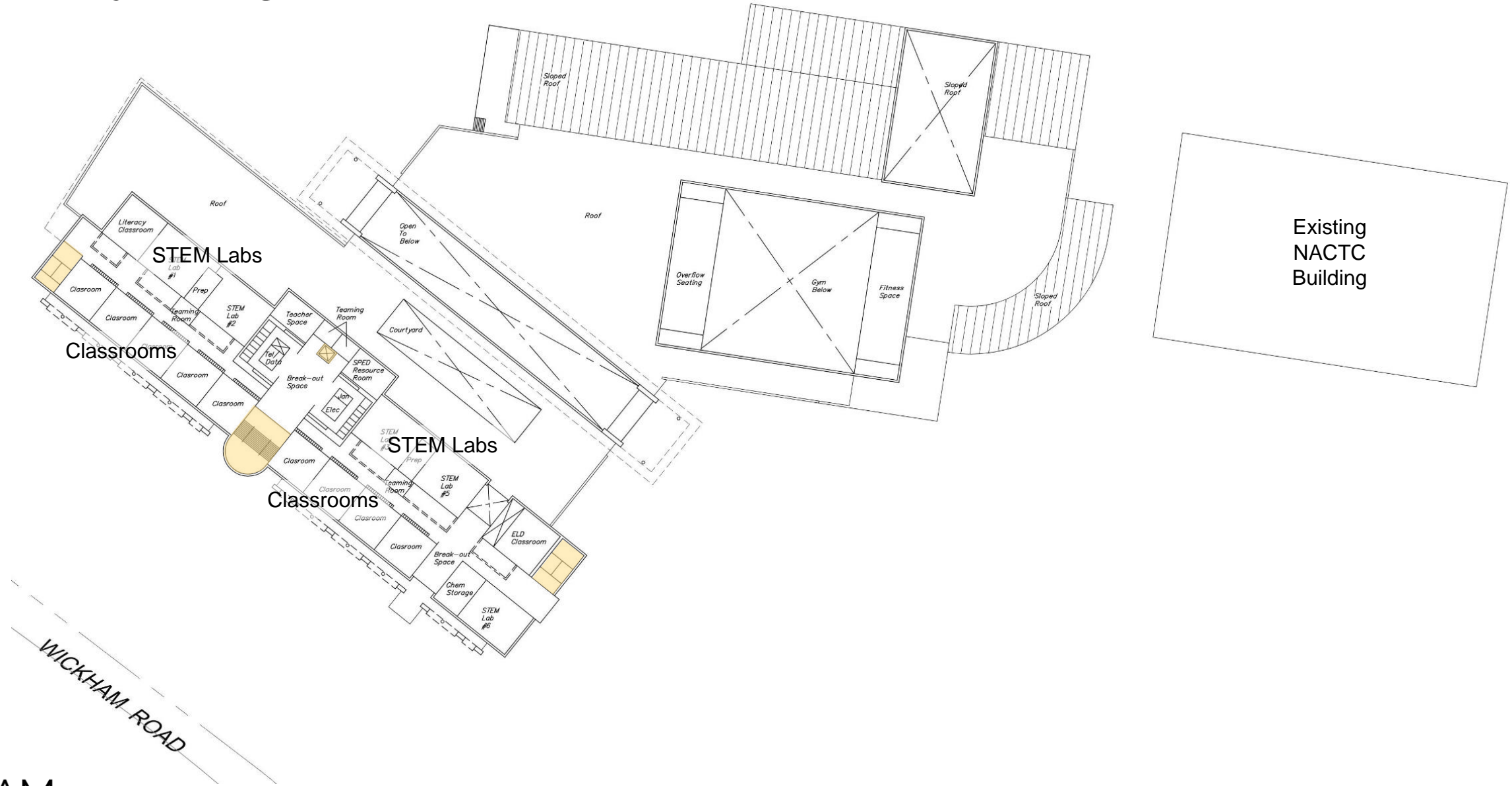


TRAVERSE

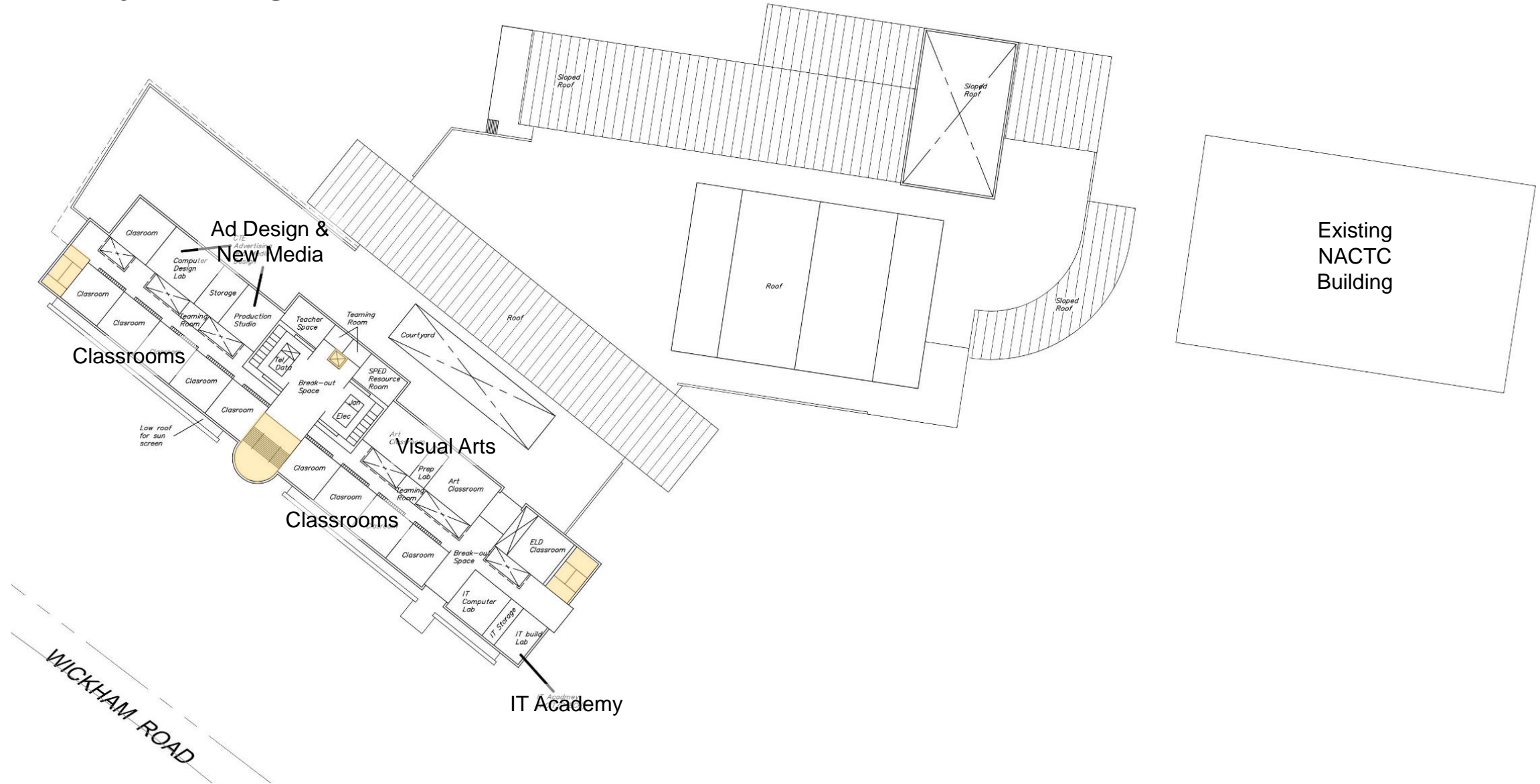
Preliminary Planning (7/1/21)



Preliminary Planning (7/1/21)



Preliminary Planning (7/1/21)



Preliminary Planning (7/1/21)

