



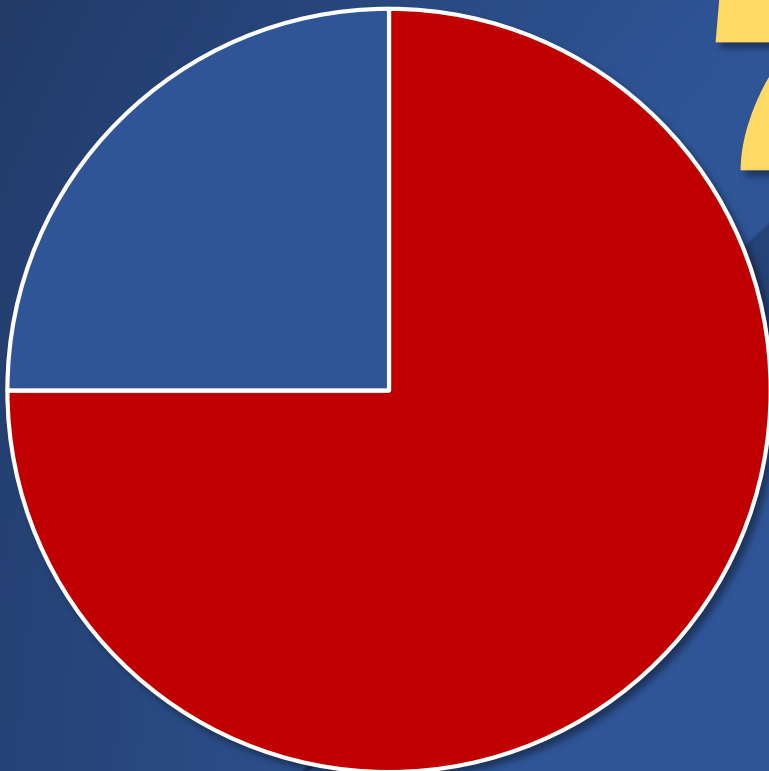
Enid Public Schools 2016 Bond **2017 Annual Report**

February 2018



Enid Public Schools 2016 Bond

In February 2017 we encumbered 8% of the bond funds designated for facilities in the 2016 Bond. As of February 2018 75% of bond funds have been encumbered.



75%

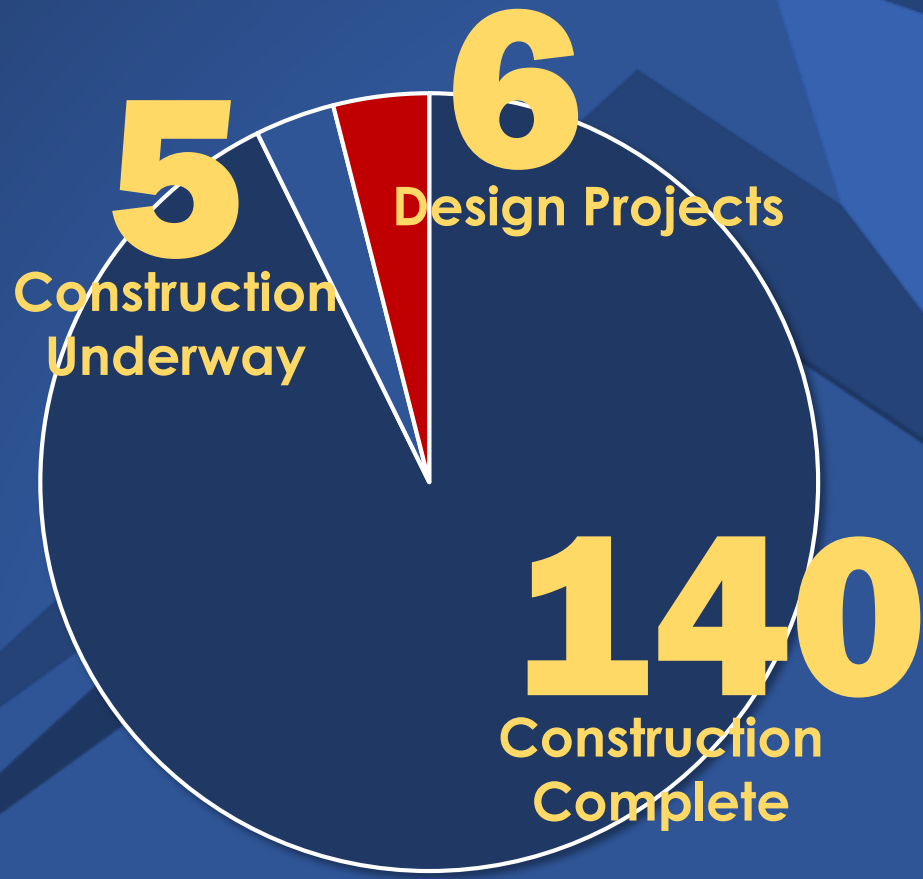
**Funds
Encumbered**

Enid Public Schools 2016 Bond

In 2017 we started 151 projects. That equates to about 3 new projects every week.

151

Total Projects



Design Projects

Design Projects Progress

17 Design Projects

About one third of the time it takes to build a building is used by the architects to design the building. We have had teams of architects working every day to make sure we have quality buildings. Many of our design projects are ahead of schedule.



A pie chart with a red slice representing 82% and a blue slice representing 18%. The red slice is significantly larger than the blue slice.

Category	Percentage
Complete	82%
In Progress	18%

82%
Complete

Architects Working on Designs

MA+ Architecture

Enid High School Gym & Performing Arts Center

The Stacy Group, Inc.

Longfellow Middle School Additions & Renovations

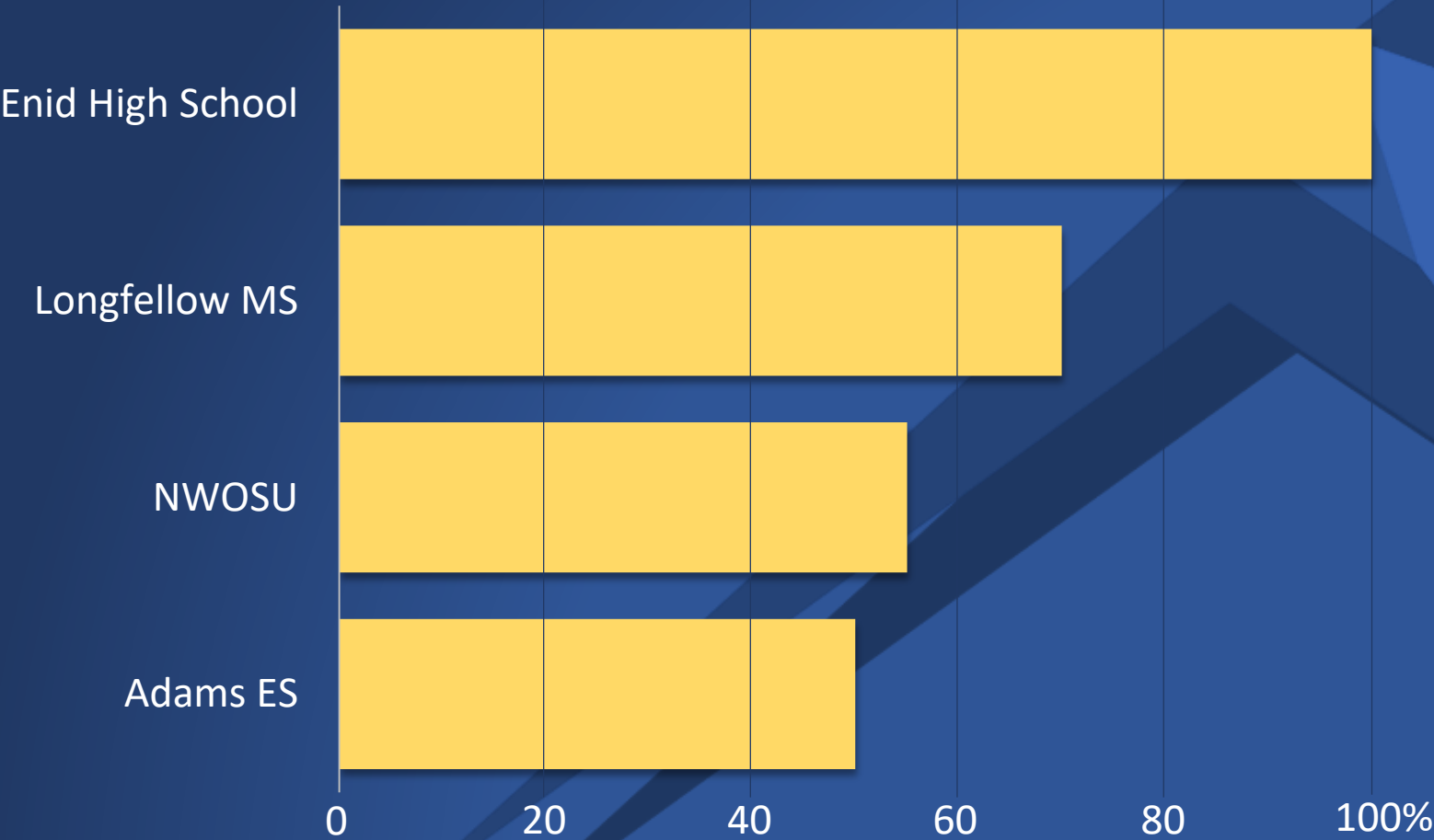
Easley Associates Architects

EPS/NWOSU Early Childhood Learning Center

Easley Associates Architects

Adams Elementary School Additions & Renovations

Design Projects Progress



Design Projects Updates

Adams Elementary School



Architect:

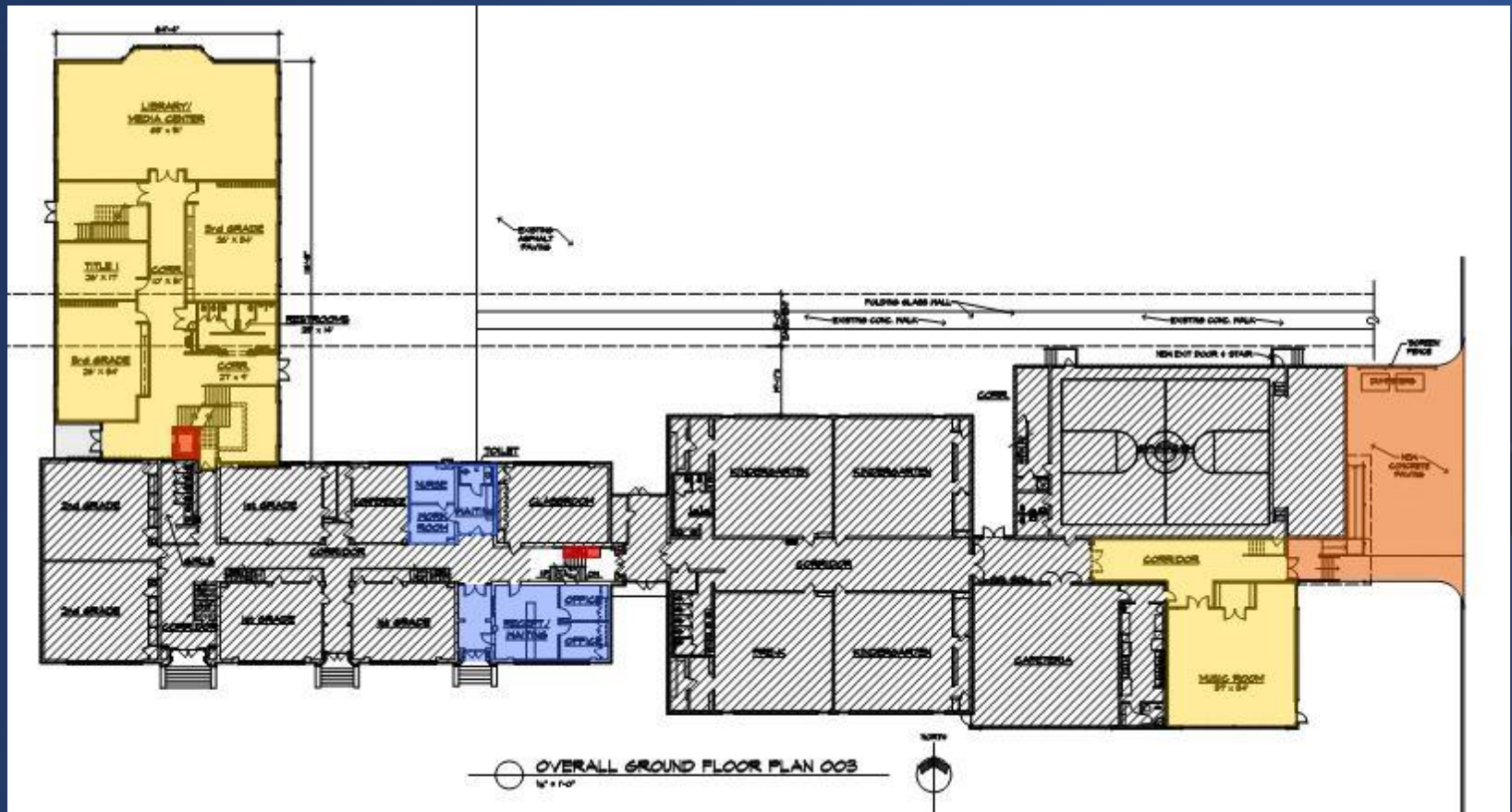
Easley Associates Architects

Update:

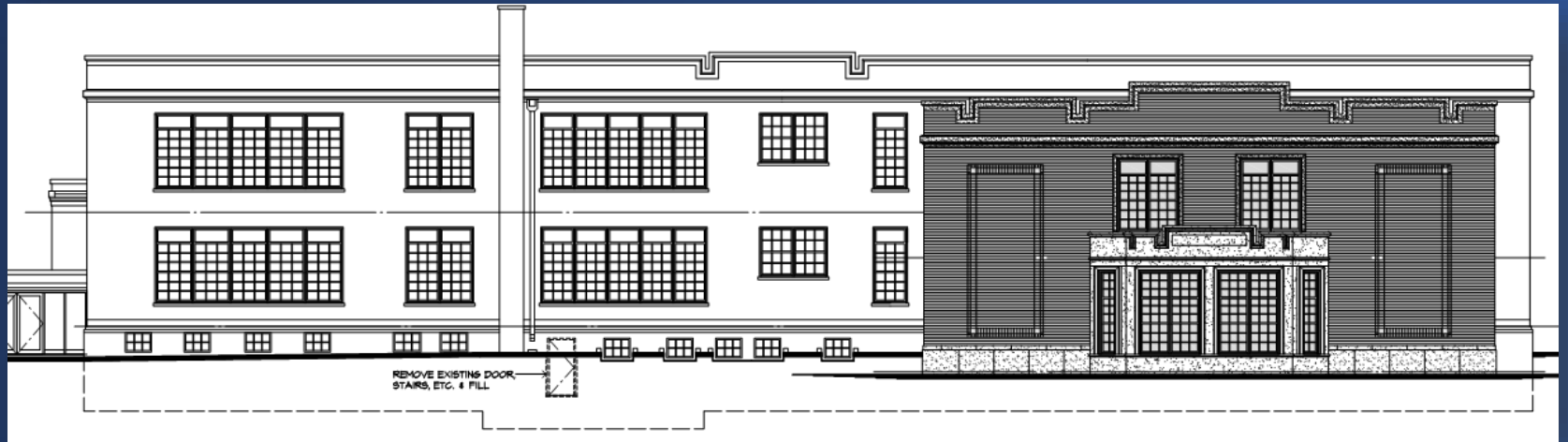
The architects are working on construction documents which include elevators and chair lifts to make the majority of the building accessible, a new east entry canopy to make a safe entry for the students, and a secured entry to the office. Engineers are surveying the existing building to finalize their design. We plan to start construction of the parking lot and modifying some utilities over the summer when the building is not in use.



Adams Elementary School



Adams Elementary School



Coolidge Elementary School



Architect:

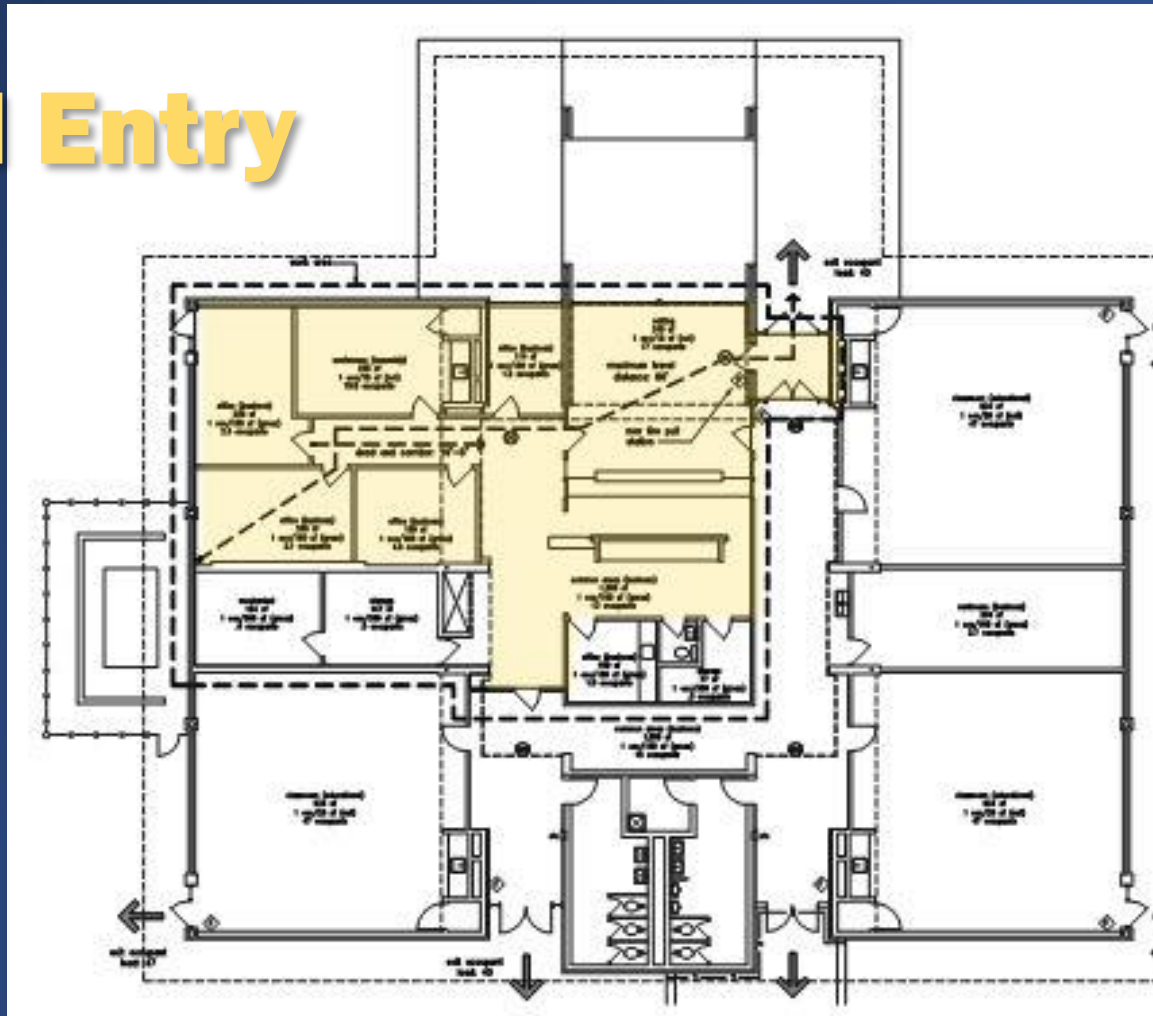
Corbin & Merz Architects

Update:

The design includes renovating an existing classroom into a new office suite. The current office space will be remodeled into a secured entry with large windows and reception desk for office use.

Coolidge Elementary School

Secured Entry



Longfellow Middle School



Architect:

The Stacy Group, Inc.

Update:

Longfellow Middle School is the second largest school in our District. It has been built on to 7 different times. The current design has found ways to simplify the existing layout and how to take advantage of spaces that have long been unused. The design will also make it easier to get around the building and give us a beautiful new entry. The design is nearing completion. The construction of the project will be phased to include relocation of the transformers, reconfiguration of the sewer line, and construction of a soccer field on the playground.



Longfellow Middle School



Secured Entry

Longfellow Middle School



Addition

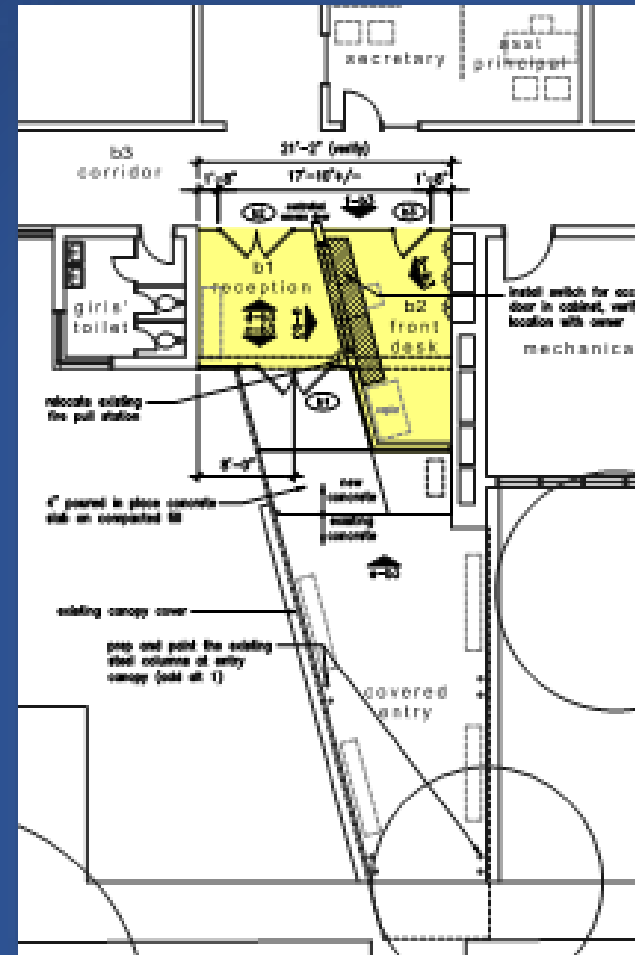
Monroe Elementary School

Architect:

Corbin & Merz Architects

Update:

The design includes construction of a secured entry to the school with a reception counter for office personnel. A track surrounding the new playground equipment will allow students to run laps in addition to utilizing the large field for soccer and football.

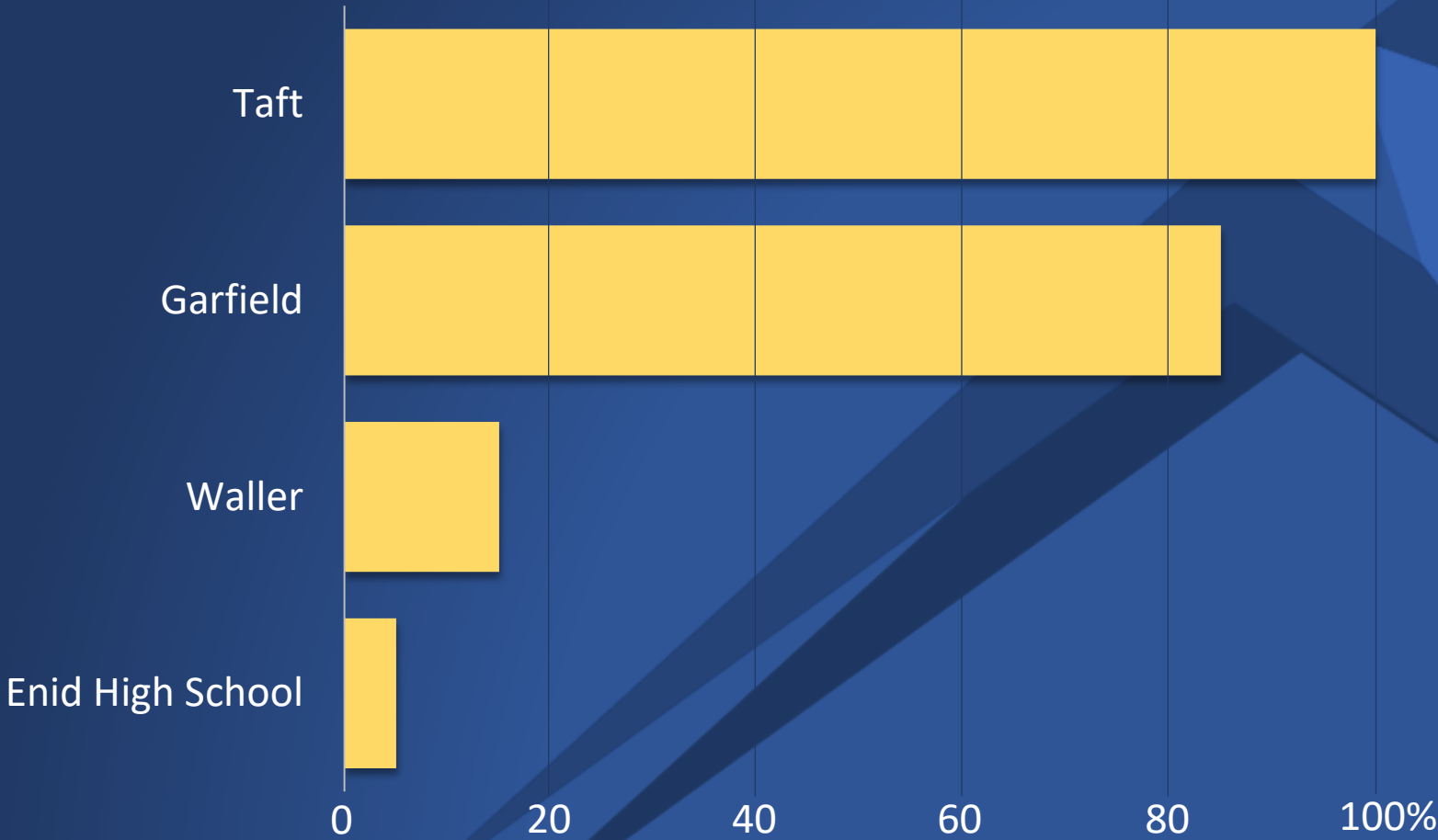


EPS/NWOSU Early Childhood Learning Center



Construction Progress

Construction Progress



Taft Elementary School Secured Entry & Digital Signage



Taft Elementary School 4 Classroom Addition



Taft Elementary School Gymnasium Remodel

BEFORE



AFTER



Taft Elementary School Playground Celebration



Garfield Elementary School



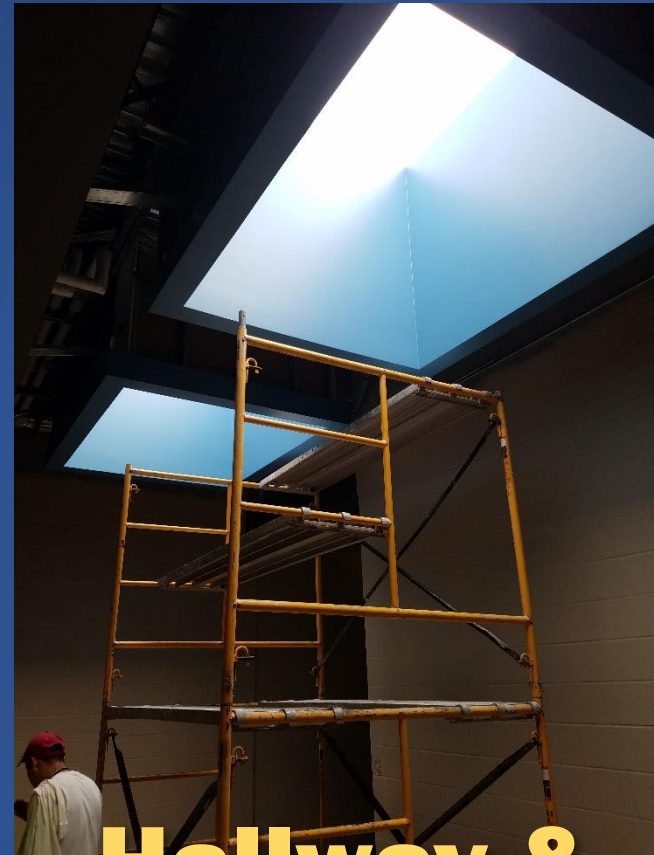
Exterior Finishes

Garfield Elementary School



**Walls &
Ceilings**

Garfield Elementary School



**Hallway &
Sky Lights**

Garfield Elementary School



Interior Finishes

Waller Middle School

Cafeteria Floor Slab



Waller Middle School



Band Room Steel Structure

Waller Middle School



Former Band Room Fill

Enid High School



EHS Gym & PAC



Demolition



EHS Gym & PAC



Courtyard



Utility Work



EHS Gym & PAC – Parking Lot



**Paving
Installation**

Construction Projects

Adams Elementary School

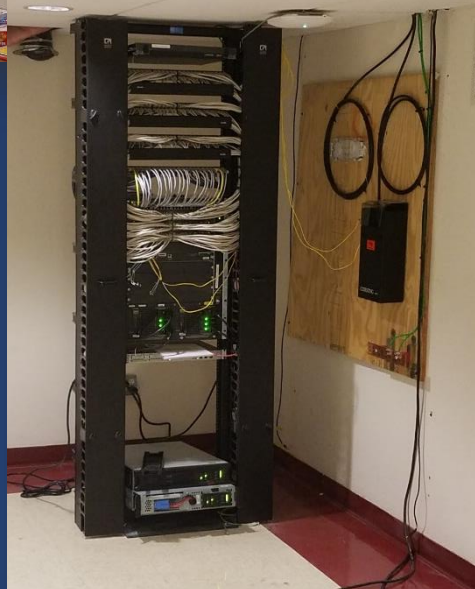
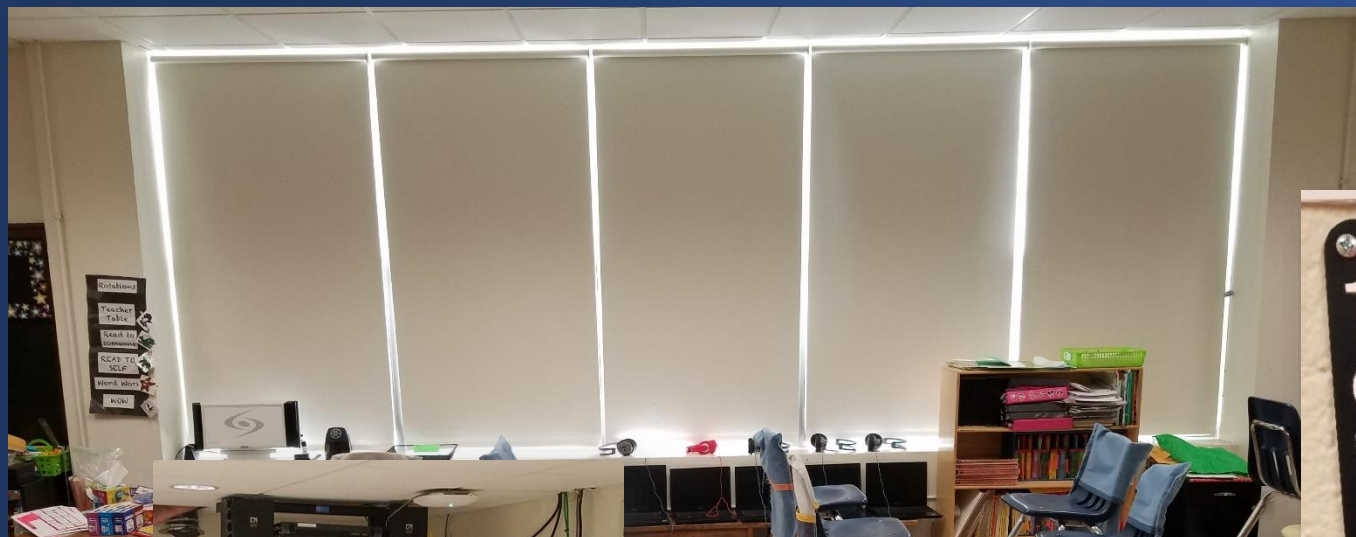
COMPLETE

- Classroom cubbies
- Fenced playground area
- Playground safety surface improvements
- Data network closet
- Window shades

ON-GOING

- Design Development completed
- Construction Documents

Adams Improvements



Coolidge Elementary School

COMPLETE

- Classroom cubbies
- Playground fencing
- Sidewalks
- Gym remodel

ON-GOING

- Secured entry design complete and construction starting soon

Coolidge Elementary School Gymnasium

BEFORE



AFTER



Coolidge Elementary School Gymnasium

BEFORE



AFTER



Emerson Middle School

COMPLETE

- Auditorium sound system
- Gym sound system
- Repaved parking lot

ON-GOING

- Reviewing science equipment needs
- Reviewing additional projects

Emerson Art Room Flooring



Glenwood Elementary School

COMPLETE

- Computer room
- Security cameras
- Window shades
- Playground
- Gym Flooring

ON-GOING

- Access control on doors

Glenwood Computer Room

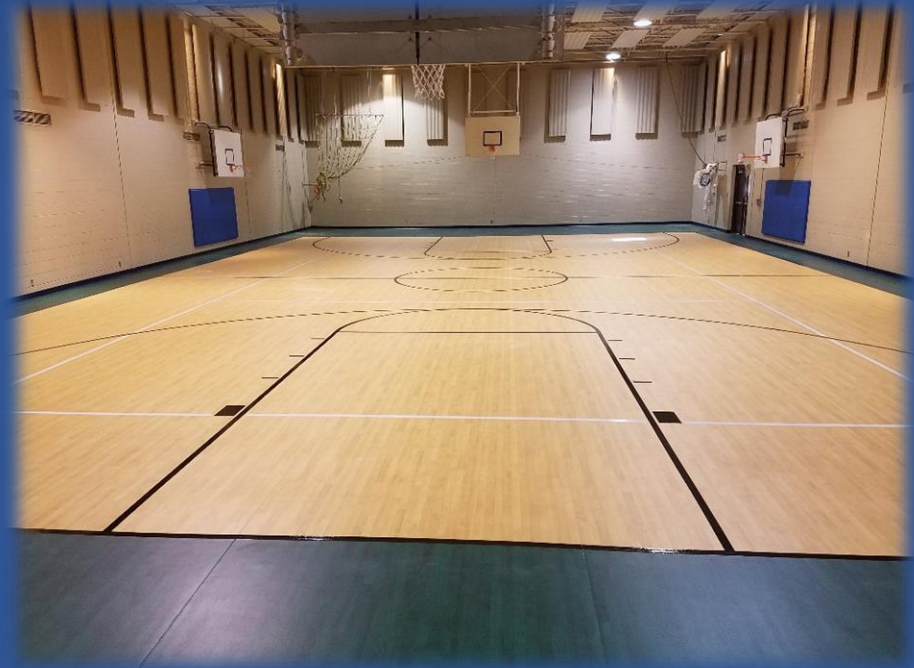


Glenwood Elementary School Gymnasium Flooring

BEFORE



AFTER



Hayes Elementary School

COMPLETE

- Classroom cubbies
- Security cameras
- Sealed & striped the parking lot
- Concrete play area

ON-GOING

- Awning construction

Hayes Elementary School



Awning

Hoover Elementary School

COMPLETE

- Hallway flooring
- Security cameras
- Playground
- Site drainage improvements

ON-GOING

- Reviewing additional projects

Hoover Hall Flooring



Hoover Playground Fencing



Monroe Elementary School

COMPLETE

- Playground installation
- Removed asphalt track
- Gym sound system
- New AC in server room

ON-GOING

- Secured entry and playground track design complete and construction begins soon

Monroe Stage Flooring



Monroe Playground



Prairie View Elementary School

COMPLETE

- Security cameras
- Playground
- Parking lot expansion
- Sidewalk expansion

ON-GOING

- Reviewing additional projects

Prairie View Elementary School Additional Parking & Sidewalk



Elementary School Cubbies



Window Shades & I.T. Closets



2016 Bond Issue Annual Report

