



# Enid Public Schools 2016 Bond **2016 Annual Report**

February 2017



# Enid Public Schools Strategic Action Plan

The initial goals of the **Enid Public Schools Strategic Action Plan** have been met, and we are well on our way to completing the Action Steps.

## **Goal:**

We will provide and maintain exemplary facilities that are clean, safe, and secure for all students. These facilities will enhance learning opportunities in every curricular and extracurricular activity.

## **End of Year Projections for 2016:**

Design firms selected, design phase begun

## **Evidence of Completion:**

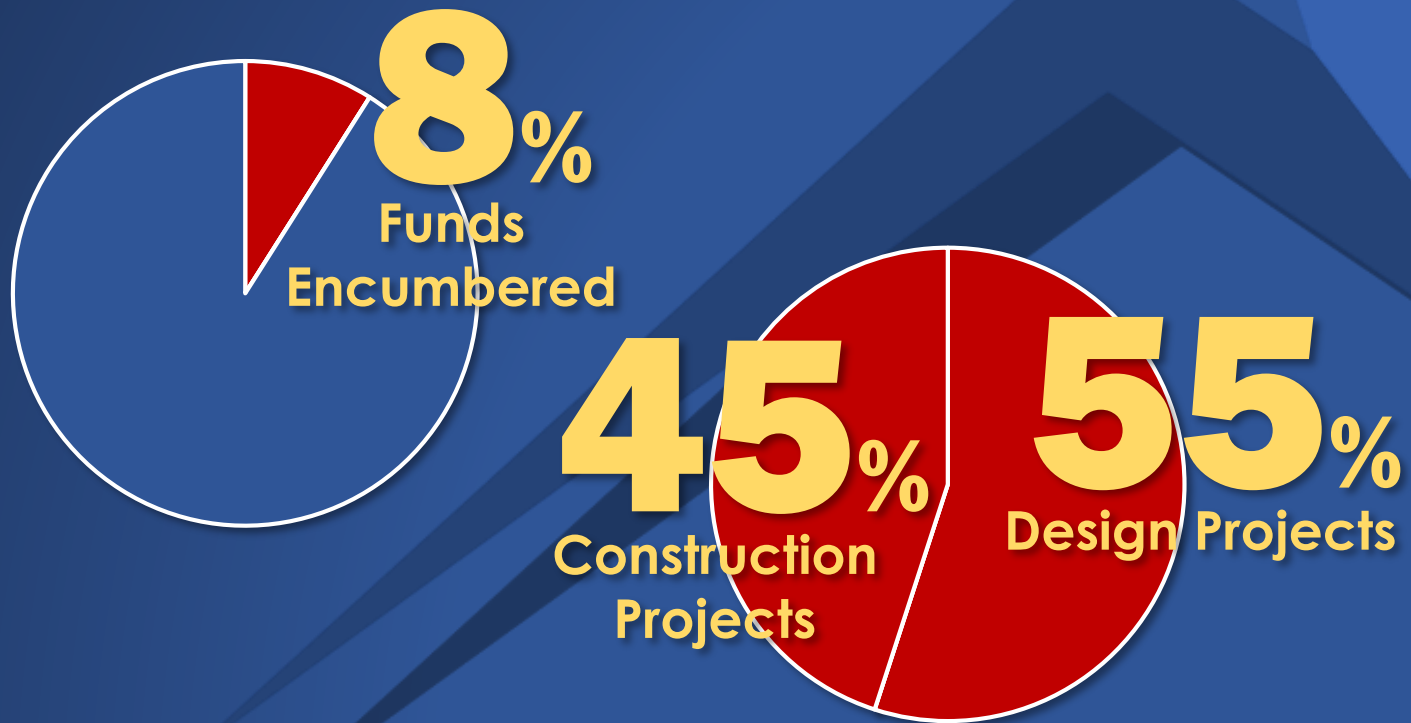
Bond election passed, design work begun

## **Action Steps:**

Construct new and renovate existing facilities

# Enid Public Schools 2016 Bond

In 2016 we encumbered 8% of the bond funds designated for facilities in the 2016 Bond. The funds are being used for “shovel ready” construction projects and for architects to design our major building projects.



# Enid Public Schools 2016 Bond

In 2016 we started 76 projects. That equates to about 1 new project every 5 days. The average cost of those projects was around \$55,000.

**76**

Total Projects

**15**

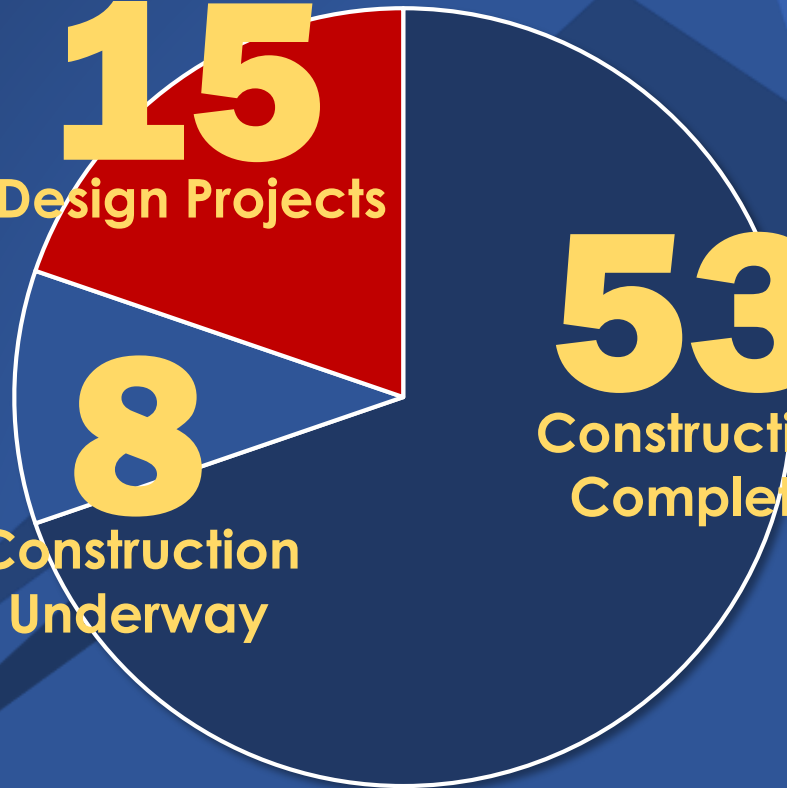
Design Projects

**8**

Construction Underway

**53**

Construction Complete



# Design Projects Progress

# Design Projects Progress

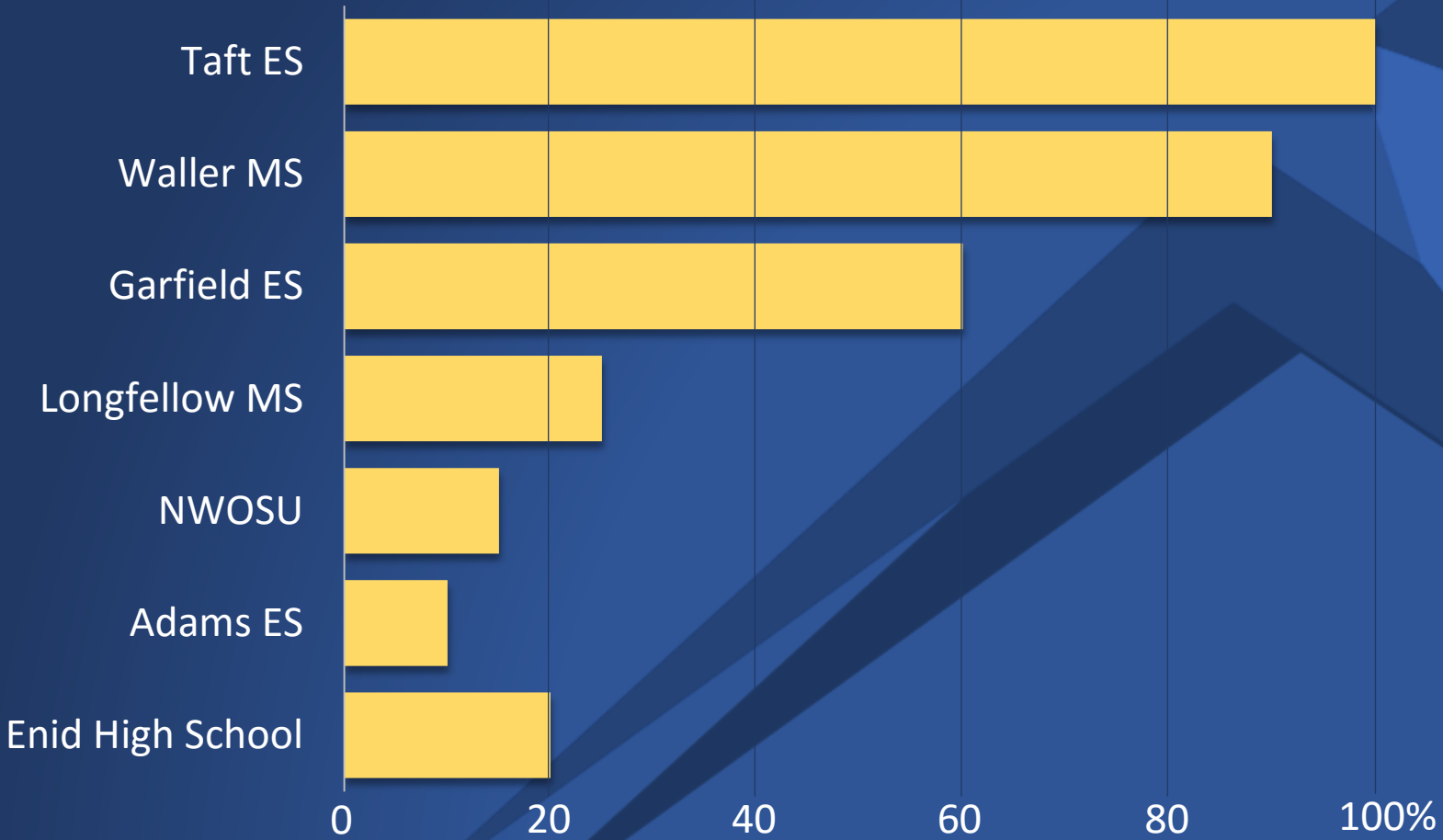
## 15 Design Projects

About one third of the time it takes to build a building is used by the architects to design the building. We have had teams of architects working every day to make sure we have quality buildings. Many of our design projects are ahead of schedule.



**46%**  
**Complete**

# Design Projects Progress



# Architects Selection Process



# Architects Selection Process

The architect selection process created by the Construction Management Department attracted architects from multiple states and internationally. We attracted architects of famous structures like Skydance Bridge and the Oklahoma City Bombing Memorial. We narrowed the list of architects down to five for interviews. The Selection Committee then visited projects that represented the firm's work. We visited projects in Stillwater, Sand Springs, Bartlesville, Tulsa, Tahlequah, Yukon, and Mustang. After the interviews the architects were selected for each project.



# Architects Selected

MA+ Architecture

**Enid High School Competition Gym & PAC**

Corbin and Merz Architects

**Waller Middle School Additions & Renovations**

Corbin and Merz Architects

**Taft Elementary School Additions**

The Stacy Group, Inc.

**Garfield Elementary School Additions**

The Stacy Group, Inc.

**Longfellow Middle School Additions & Renovations**

Easley Associates Architects

**The Cooperative Preschool at Northwestern**

Easley Associates Architects

**Adams Elementary School Additions & Renovations**

KKT Architects

**District On-Call Projects**

# Design Projects Updates

# Adams Elementary School



## Architect:

Easley Associates Architects

## Update:

We have completed preliminary floorplans and have decided to look at some issues with utility lines that bisected our property. The utilities lines make expanding to the north difficult. We have had very positive meetings with the City of Enid and several utility companies and now have solutions that will allow us to expand Adams in a very positive way. We have taken this time to look at how we currently use the spaces in our school and to find the best use for them. We have clarified what we need and are working on including those findings as we move forward with the design.



# Taft Elementary School



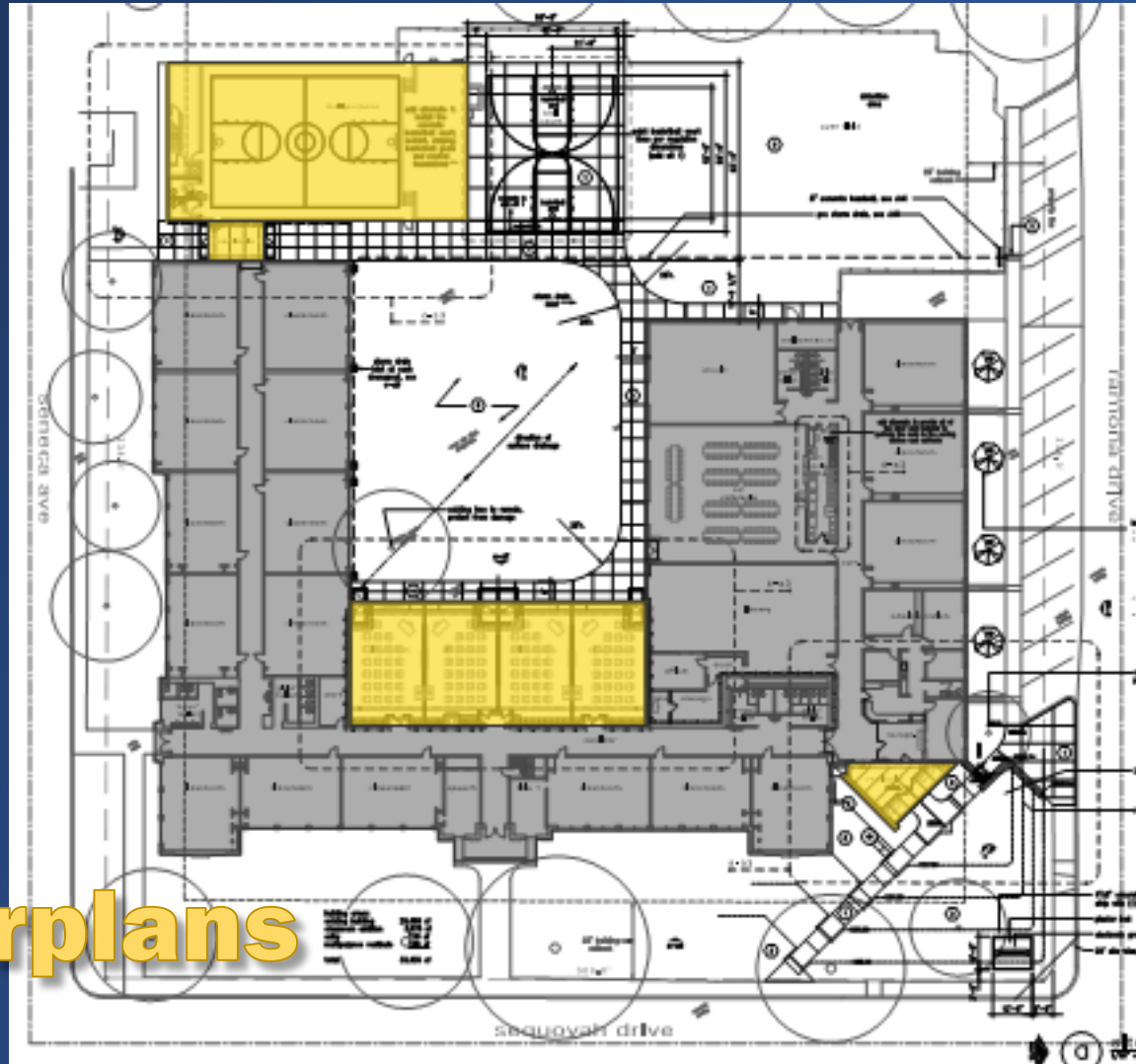
## **Architect:**

Corbin and Merz Architects

## **Update:**

The design work on Taft has been complete. The construction documents and specifications are currently available for contractors who are interested in bidding on the project. Construction should start in late March.

# Taft Elementary School



**Floorplans**



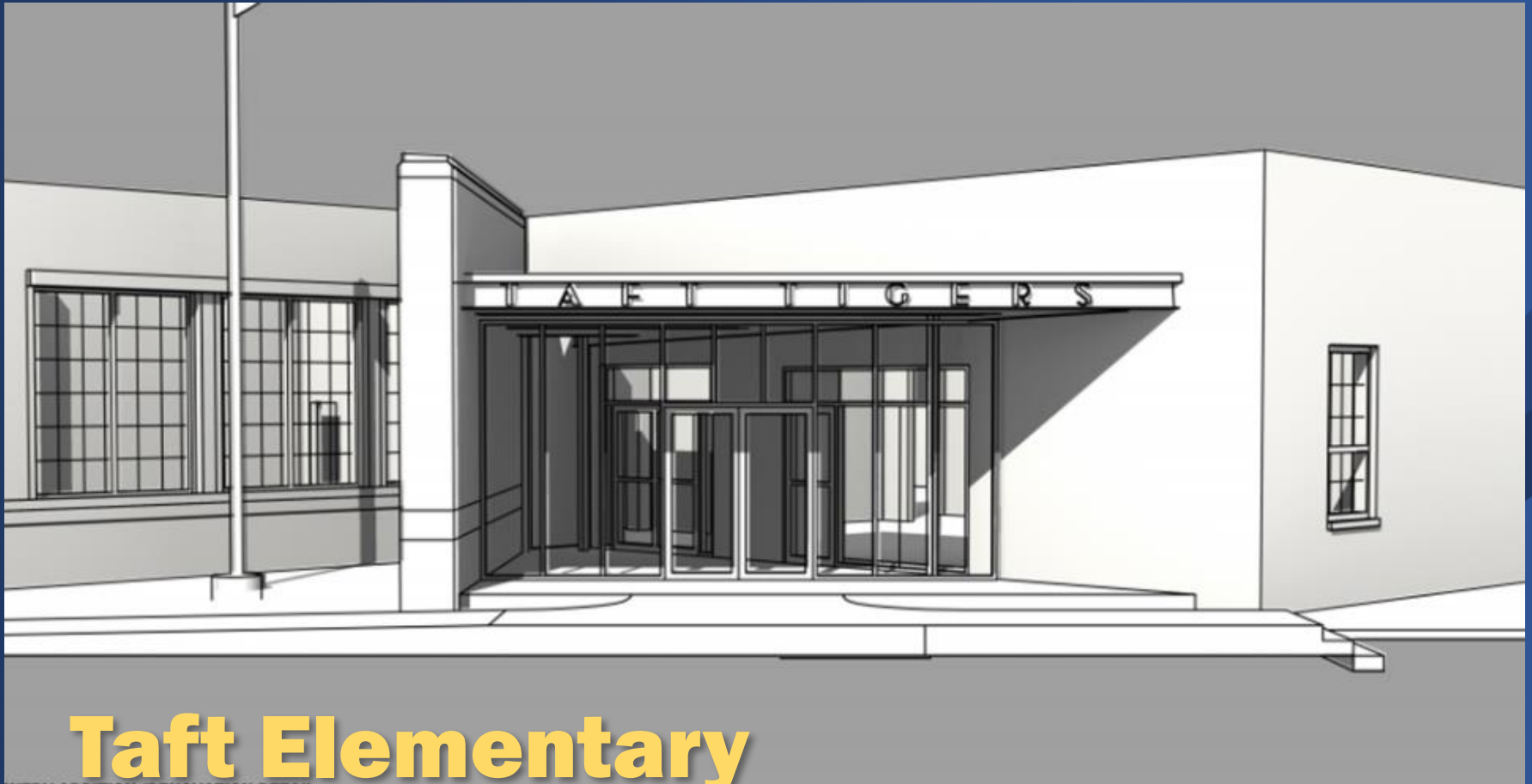
# Taft Elementary School



PROPOSED ENTRY RENOVATION

## Taft Elementary Aerial View

# Taft Elementary School



## Taft Elementary Security Vestibule



# Garfield Elementary School



## **Architect:**

The Stacy Group, Inc.

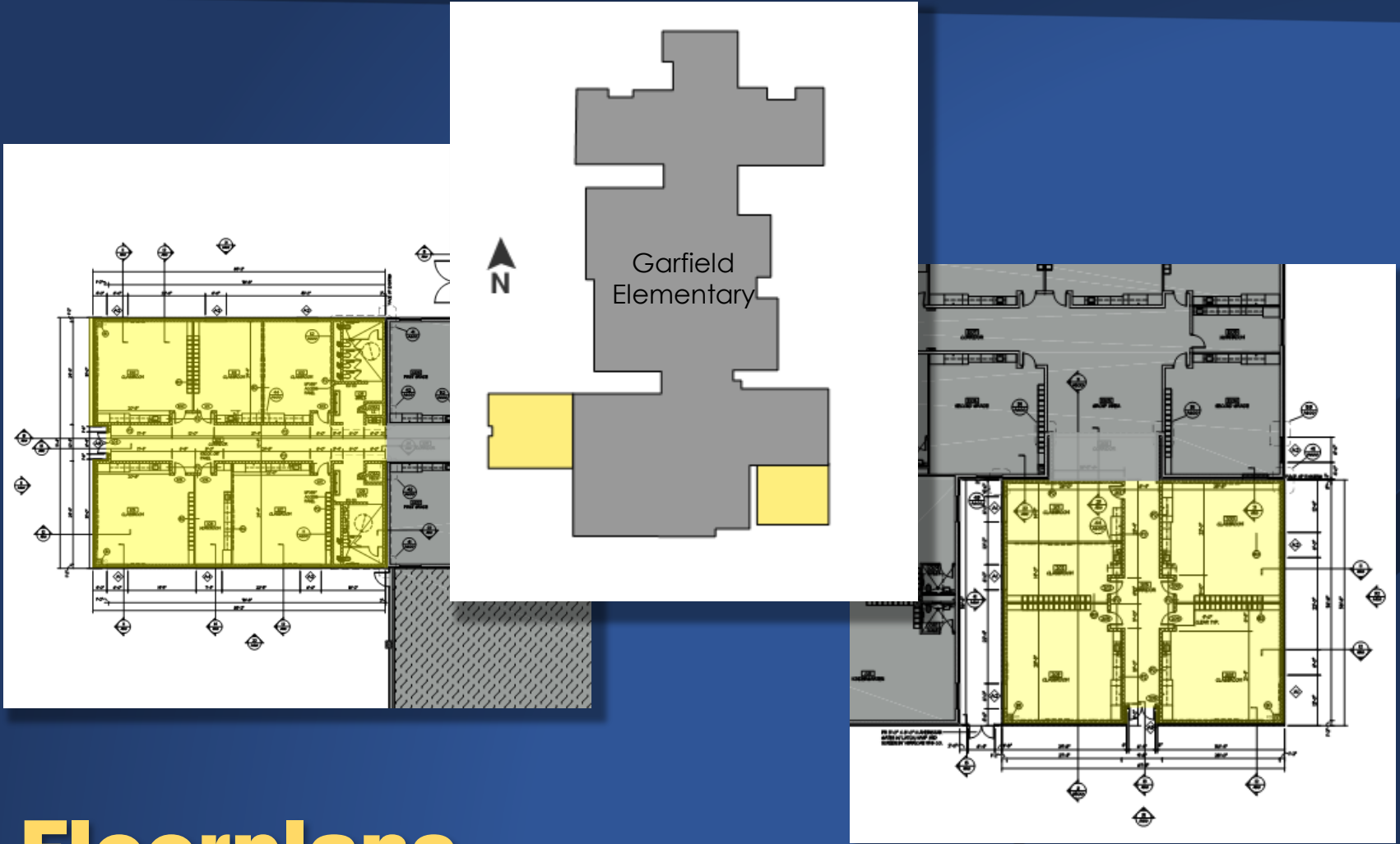
## **Update:**

The Stacy Group has created a very simple and efficient design that blends seamlessly with the original school. We have approved the design, and the Stacy Group has started the construction documents. We plan to be finished with the design work by the end of March.



## **Southeast Addition**

# Garfield Elementary School



## Floorplans

# Garfield Elementary School



**Southwest Addition**

# Longfellow Middle School



## **Architect:**

The Stacy Group, Inc.

## **Update:**

Longfellow Middle School is the second largest school in our District. It has been built on to 7 different times. The current design has found ways to simplify the existing layout and how to take advantage of spaces that have long been unused. The design will also make it easier to get around the building and give us a beautiful new entry. The design is about 25% complete. We expect to be approving the design soon and starting construction documents.





# Longfellow Middle School



**Preliminary  
Entry Design**

# Longfellow Middle School



**Preliminary Design  
Shaded Seating**



# Longfellow Middle School



**Preliminary Design**

# Waller Middle School



## **Architect:**

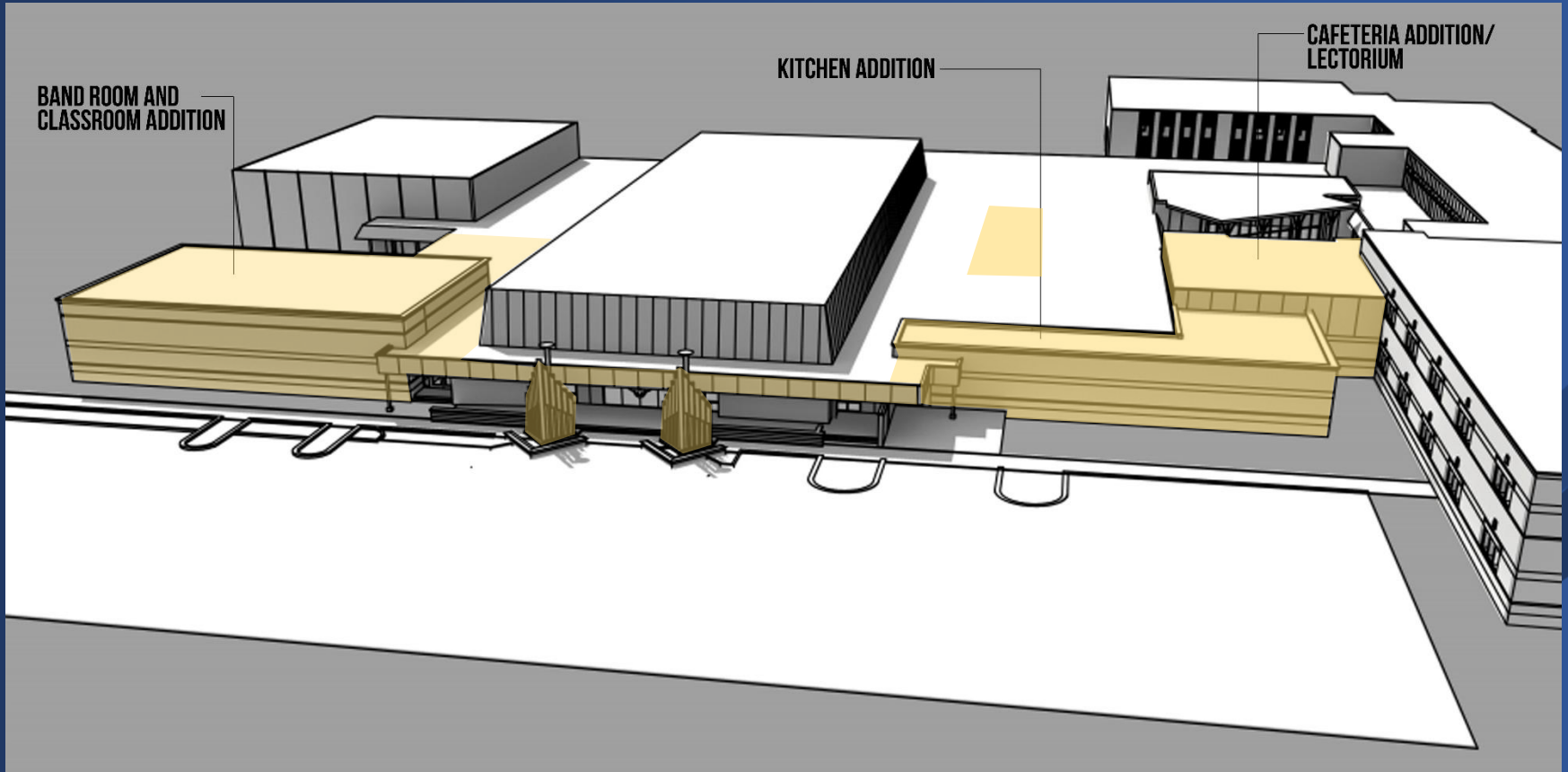
Corbin and Merz Architects

## **Update:**

Corbin and Merz Architects are complete with the design and 60% complete with the construction documents. We are coordinating the work in the cafeteria expansion with the kitchen consultants and our Child Nutrition Department. We plan to bid the project at the end of March.

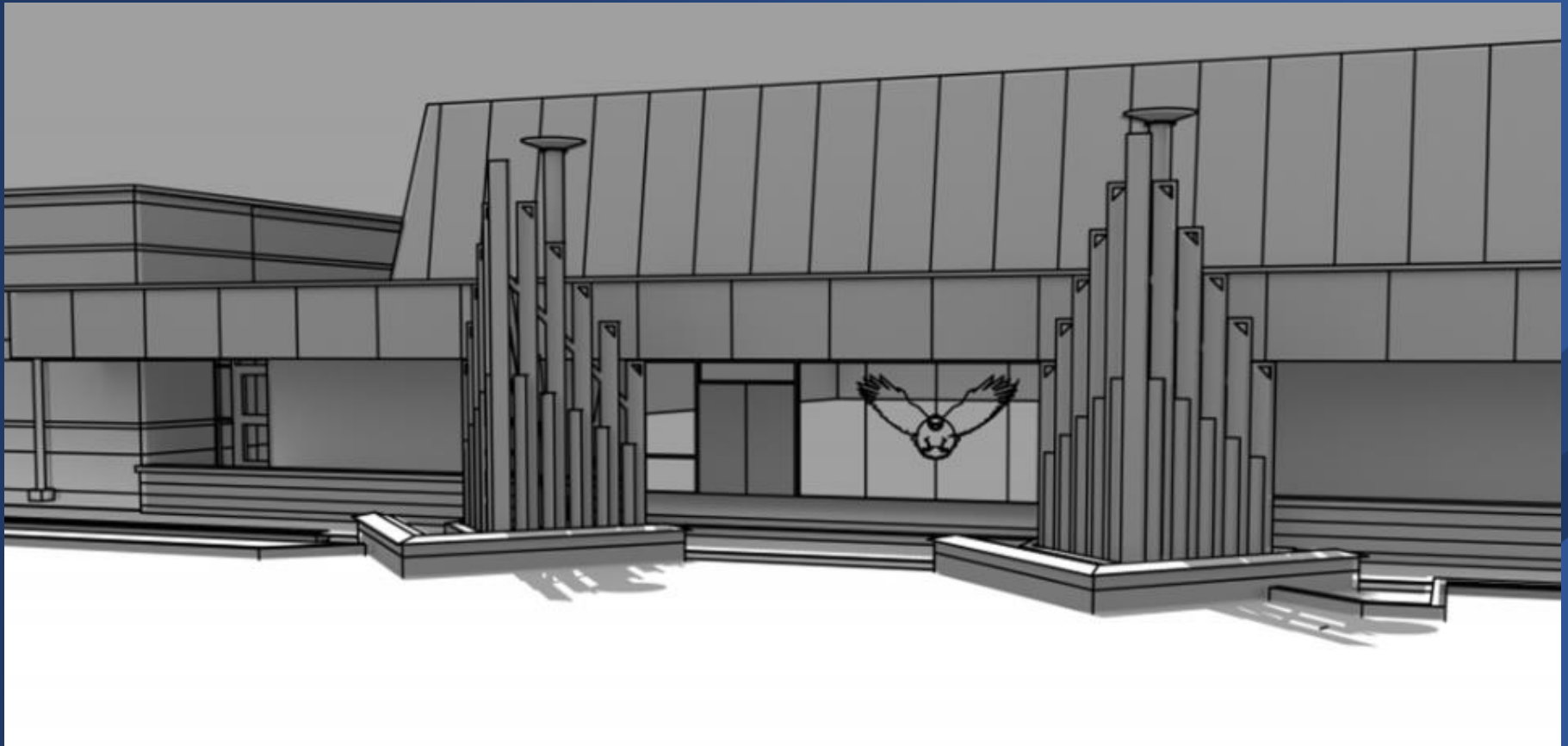


# Waller Middle School



## Preliminary Design West Elevation

# Waller Middle School



## Preliminary Design Auditorium Entry

# Enid High School



## Architect:

MA+ Architecture

## Update:

We have meet with the music and drama teachers, coaches and athletic directors, and the various other groups involved with the new Competition Gymnasium and Performing Arts Center. We have determine the types of spaces needed and have looked at several ways to arrange the building. MA+ architects has been working on preliminary designs and renderings.



# Enid High School



**Enid High Gym & PAC  
Preliminary Rendering**



# Enid High School



**Enid High Gym & PAC  
Preliminary Rendering**

# Enid High School



## Enid High Gym & PAC Preliminary Site Plan

# Enid High School



## Enid High Gym & PAC Preliminary Floor Plan

# Cooperative Preschool



## Architect:

Easley Associates Architects

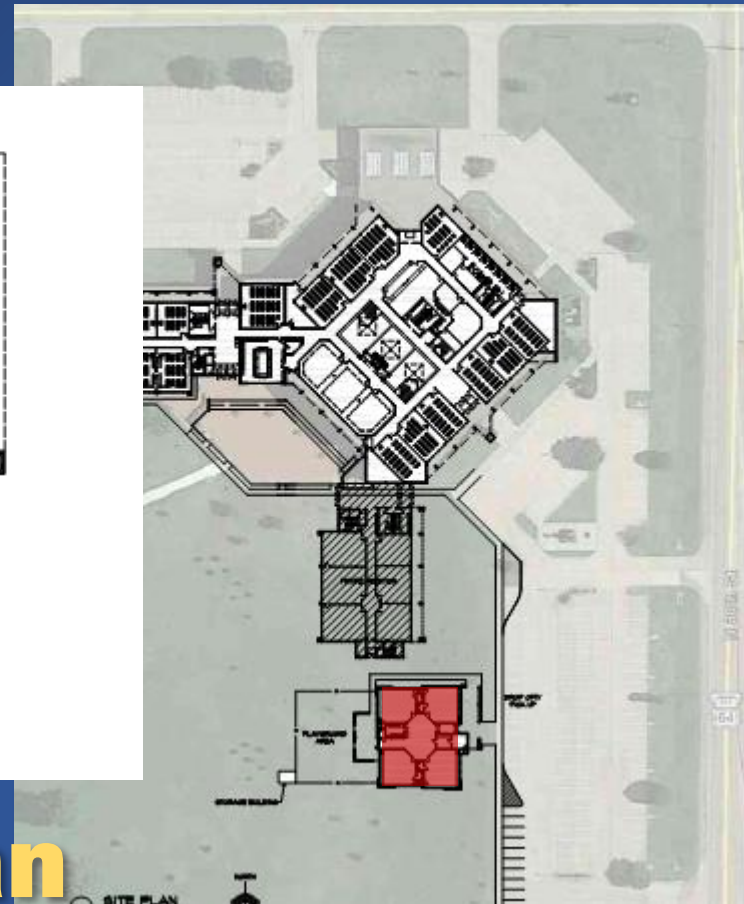
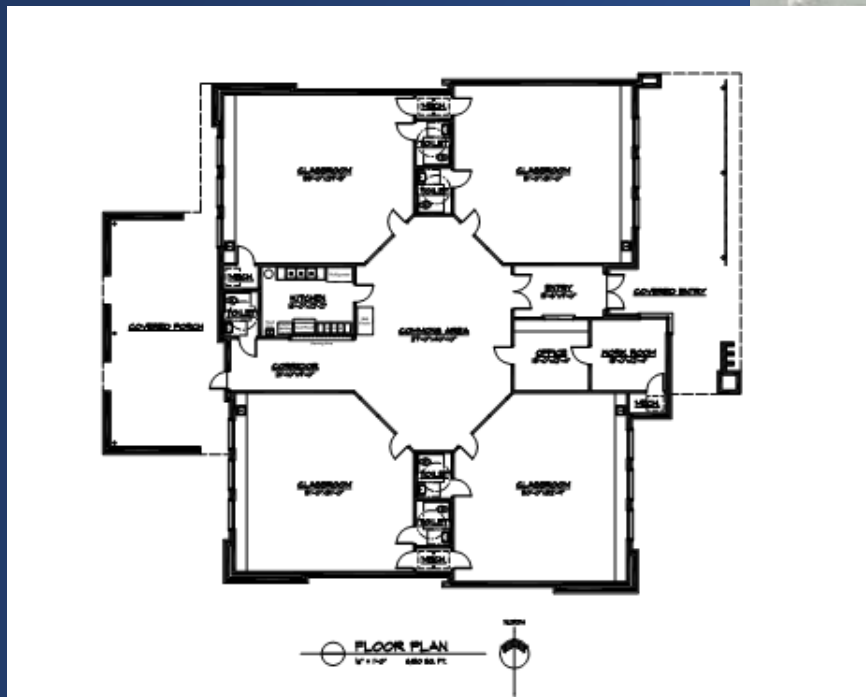
## Update:

We have looked at several options for the plan to make it work as both a high quality preschool and a teaching preschool for NWOSU. The design is about 25% complete. We are currently coordinating the design with our Child Nutrition Department.





# Cooperative Preschool



**Preliminary Plan  
and Site Plan**

# Cooperative Preschool



**Preliminary  
Entry Design**

# Hayes Elementary School



## Architect:

KKT Architects

## Update:

The awning at Hayes had been damaged and needs to be repaired. KKT's design for the new awning gives the school a beautiful new entry and provides a place for students to gather. KKT is working on the construction documents.



# Hayes Elementary School



**Preliminary  
Awning Design**

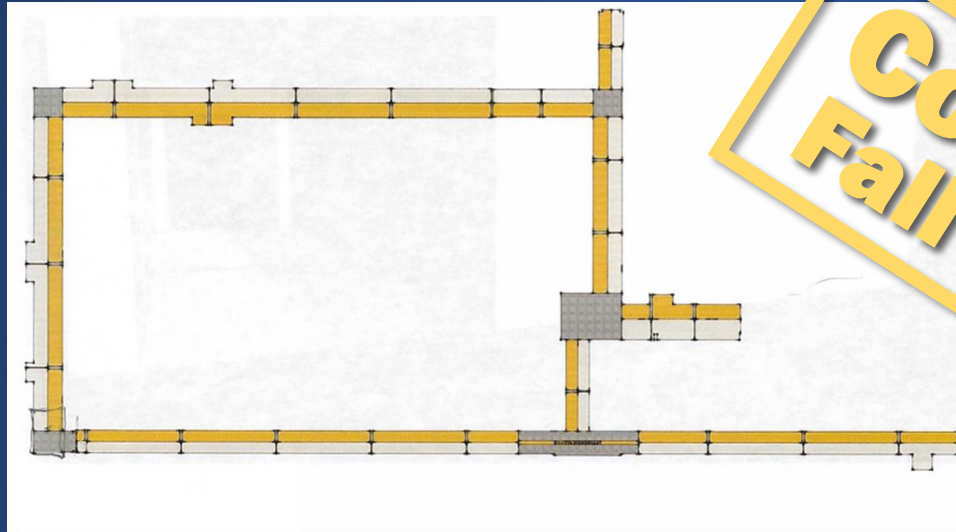


# Hoover Elementary School



**Architect:**  
KKT Architects

**Update:**  
KKT architects is working on finalizing the construction documents for the hall flooring and we are working finalizing the selection of materials.



**Coming  
Fall 2017**

## **New Flooring Plan**

# Hoover Elementary School



## Interesting Fact:

The floor pattern doesn't just look pretty. The architects designed the pattern to help teachers. Like on a road, the center line helps teacher line students up, and the lines across the hall align with doors where they want them stop.



# New Flooring

# Prairie View Elementary School



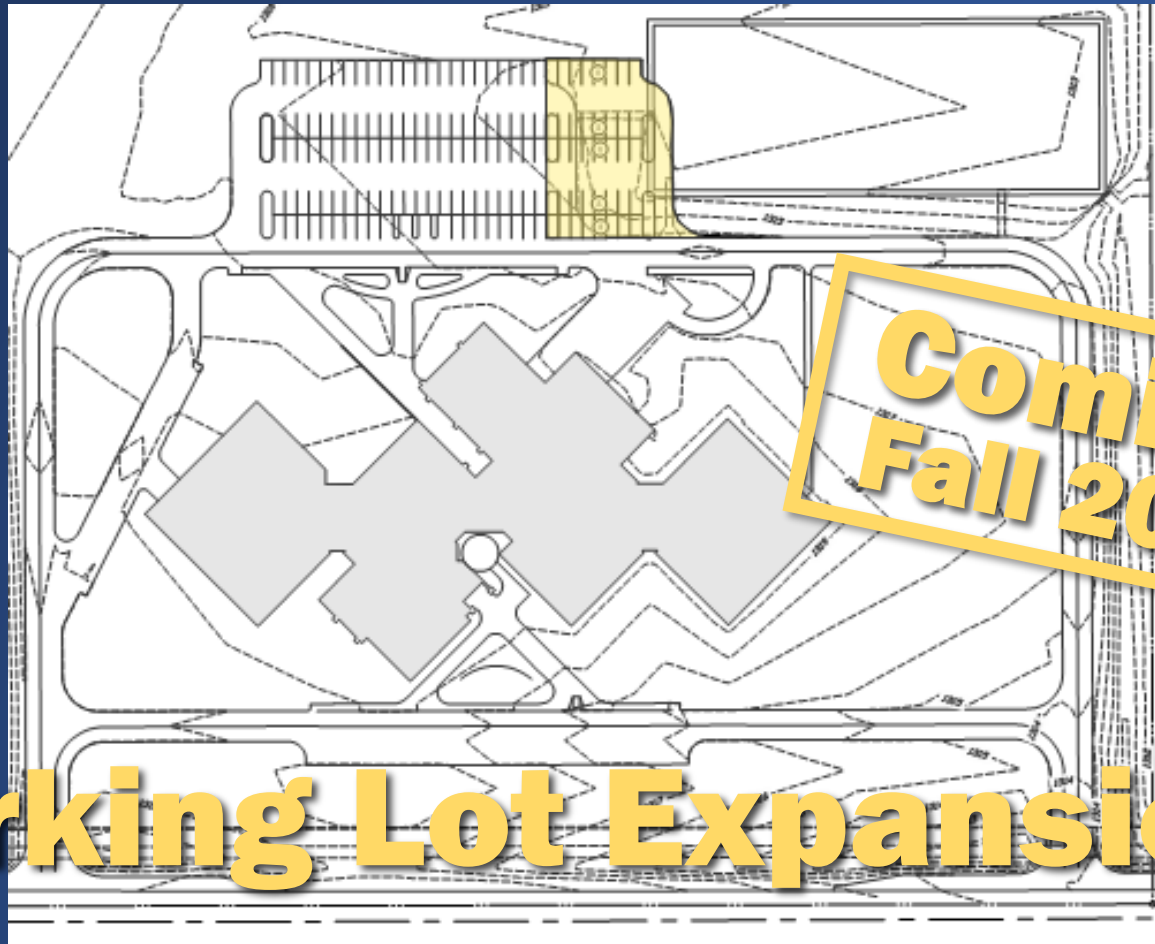
## **Architect:**

KKT Architects

## **Update:**

The construction documents are being completed for the parking lot expansion. We plan to bid the project soon and complete the construction over the summer.

# Prairie View Elementary School



**Coming  
Fall 2017**

# **Parking Lot Expansion**



# Construction Projects

# Playgrounds



# Playgrounds

Playground installation is complete at Eisenhower, Glenwood, Hoover, McKinley, and Prairie View Elementary Schools. The installation continues at Monroe Elementary.

Taft Elementary will have its playground installed after its major addition is completed.



# Playgrounds



## Interesting Fact:

The students **VOTED** for their favorite playgrounds as part of a civics lessons during the presidential election.

## Interesting Fact:

The play equipment selected was specifically designed to improve cognitive alertness and social inclusiveness.



# Security Cameras

We are expanding our existing Avigilon security camera system. Half of the schools have had security cameras installed. We will be installing the remaining cameras in conjunction with the construction of security vestibules.

**50%**  
**Complete**

## Interesting Fact:

District-wide security improvements to come include security vestibules and parking lot lighting.





# Sound Systems

Several schools throughout the district have had their auditorium and gymnasium sound systems upgraded. This has improved many morning assemblies, PE classes, and activities.



# Paving and Sidewalk Projects

Paving and sidewalk projects have been completed all over the District. Several of the projects are:

- EHS trackside parking
- Lincoln sidewalks
- Emerson parking
- Coolidge sidewalks
- McKinley sidewalks
- Hayes parking lot (resurfaced)
- And several others



# Construction Projects

# Adams Elementary School



## COMPLETE

- Secured classroom doors
- Fenced playground area
- Installed window shades

## ON-GOING

- Reviewing the needs of the school
- Designing cubbies for classrooms

# Coolidge Elementary School



## COMPLETE

- New cafeteria HVAC & various classrooms
- Installed window shades
- Replaced sidewalk on East side
- Gym sound system

## ON-GOING

- Designing cubbies for 4 classrooms
- Replacing old HVAC units as needed



# Eisenhower Elementary School



## COMPLETE

- Kitchen Floor Remodel
- Gym Remodel
- Security Vestibule
- Security Cameras
- Playground

## ON-GOING

- Access controls

### Interesting Fact:

Eisenhower was one of the first projects completed. Because access to Vance Air force Base might become more difficult in the future, we decided to complete Eisenhower's projects first.

# Eisenhower Elementary School



## Interesting Fact:

This is the first of the new security vestibules in the district. They will require visitors to check in through the office before entering the school.



# Security Vestibule

# Eisenhower Elementary School



# Playground Celebration



# Eisenhower Elementary School



**BEFORE**



**AFTER**



# Gymnasium Renovation

# Glenwood Elementary School



## COMPLETE

- Gym sound system
- Security cameras
- Window shades
- Playground

## ON-GOING

- Preliminary design of computer room



## Playground Celebration





# Glenwood Elementary School



# Glenwood Elementary School



## Interesting Fact:

The Glenwood playground was themed with little red schoolhouses to pay homage to Glenwood's original 1895 Little Red Schoolhouse.





# Hayes Elementary School



## COMPLETE

- Gym sound system
- Security cameras
- Sealed & striped the parking lot
- Concrete play area

## ON-GOING

- Preliminary design of awning & cubbies in 4 rooms



# Hoover Elementary School



## COMPLETE

- Gym sound system
- Security cameras
- Playground
- Restriped parking lot
- Handicap hardware

## ON-GOING

- Preliminary design of hall flooring



# McKinley Elementary School



## COMPLETE

- Gym sound system
- Gym flooring
- Improved drainage
- Playground

## ON-GOING

- Card access



# McKinley Elementary School



**Before:**  
**Damaged Floor Tile**



# Monroe Elementary School



## COMPLETE

- Secured playground fence
- Removed asphalt track
- Gym sound system
- New AC in server room

## ON-GOING

- Playground installation



# Monroe Elementary School



## Site Demolition and Security Gates

# Monroe Elementary School





# Prairie View Elementary School



## COMPLETE

- Security cameras
- Playground

## ON-GOING

- Preliminary design of parking spaces & sidewalk extension

# Prairie View Elementary School



**New Playground  
Equipment**

# Taft Elementary School



## COMPLETE

- Security cameras
- Gym sound system
- Floor plans & elevations

## ON-GOING

- Completing construction documents

# Emerson Middle School



## COMPLETE

- Auditorium sound system
- Gym sound system
- Repaved parking lot

## ON-GOING

- Reviewing science equipment needs

# Lincoln Academy



## COMPLETE

- Sidewalk repairs
- Drainage improvements

## ON-GOING

- Studying parking lighting



# Lincoln Academy



**New Walks  
and drainage**

# Enid Public Schools 2016 Bond



**Thank You ENID !!!!**

