

# **TYLER ISD**

## **2021 Redistricting**

# Initial Assessment

**BICKERSTAFF HEATH DELGADO ACOSTA LLP**

**3711 S. MoPac Expressway  
Building One, Suite 300  
Austin, Texas 78746  
(512) 472-8021**

[www.bickerstaff.com](http://www.bickerstaff.com)

# REDISTRICTING

## Applicable Law

### Three Principles, plus

**“One person – one vote”  
(equal population)**

**Voting Rights Act § 2  
(nondiscrimination)**

***Shaw v. Reno*  
(limits use of race)**

**Plus, as diagnostic tool:  
Voting Rights Act § 5  
(retrogression)**

# Redistricting

## One Person - One Vote

- U.S. Constitution – single-member districts must have *approximately equal populations*
- Rule of thumb: **total deviation < 10%**
  - Compare most populous and least populous districts to “ideal”-sized district
  - Add both departures from ideal together

# Example Deviation Calculation

<u>District</u>	<u>Ideal district</u>	<u>District total pop.</u>	<u>Difference</u>	<u>Deviation</u>
A	10,000	11,000	1000	+ 10.0 percent
B	10,000	10,750	750	+ 7.5 percent
C	10,000	10,250	250	+ 2.5 percent
D	10,000	8,000	- 2000	- 20.0 percent
<hr/>				
Totals:	40,000	40,000	net= 0	net= 0 percent

Total maximum deviation = difference between most populous and least populous districts = 10 percent + 20 percent = 30 percent.



# Available Census Data



## PL94-171 File

- “Census block” level
  - Total population
  - VAP  
(voting age population)
  - Race
  - Hispanic origin

# What Population Do You Use?

## Total Population

- To determine one person - one vote

## VAP

(Voting Age Population)

- To measure voting rights issues

# Section 2 of the Voting Rights Act

- No discrimination on basis of race or language minority status
- Generally, avoid *cracking or packing*
- Cracking or fracturing is dividing minority voters to fragment their voting power.
- Packing is concentrating minority voters when dividing them would permit the group to elect their candidates of choice in more than one district
- Other practices can also violate Section 2

# 14th Amendment (*Shaw v. Reno*)

Limits race-based decision making, including redistricting

Was race the predominant consideration in drawing a redistricting plan?

If so, is the plan a *narrowly tailored* means of addressing a *compelling governmental interest*?

# Section 5 of the Voting Rights Act

- Preclearance no longer required (*Shelby County v. Holder* (2013))
- Section 5 standard is “retrogression”
  - Are minorities worse off under the new system?
  - No discriminatory purpose or effect
- Still a useful diagnostic tool to identify potential Section 2 issues

# Benchmark

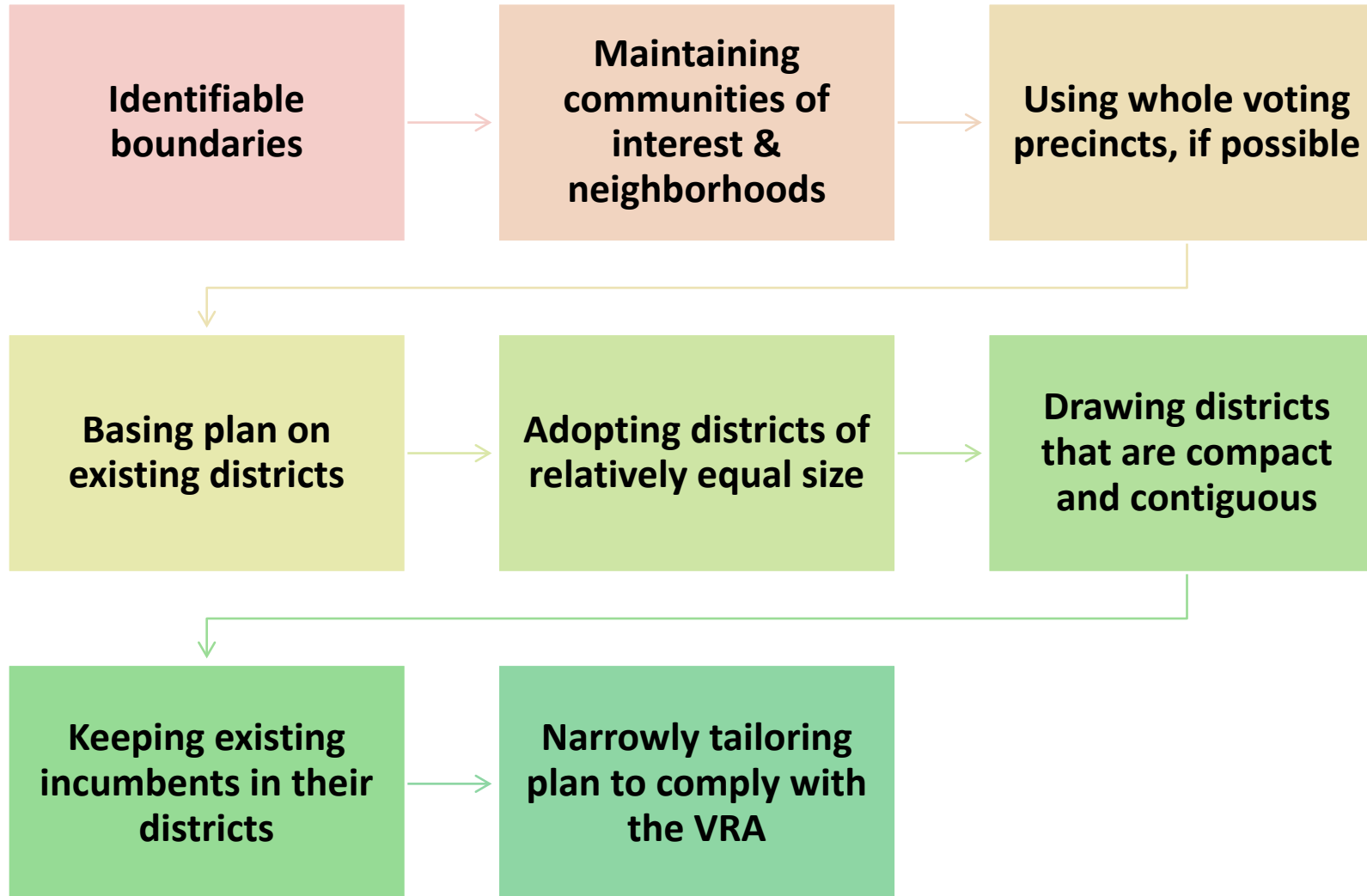


The benchmark is the standard against which retrogression is measured.



The benchmark is 2020 Census data superimposed on the last legally enforceable plan (typically, 2011 lines).

# Adopt Criteria



# Plan Development Elements



---

Initial Assessment

---

---

Adopt plan criteria, guidelines

---

---

Develop illustrative plan(s)

---

---

Public comment / hearing

---

---

Analyze comments

---

---

Adopt final plan

---

---

Implementation

---

---

Reconfigure election precincts

---



# Proposed Redistricting Timeline

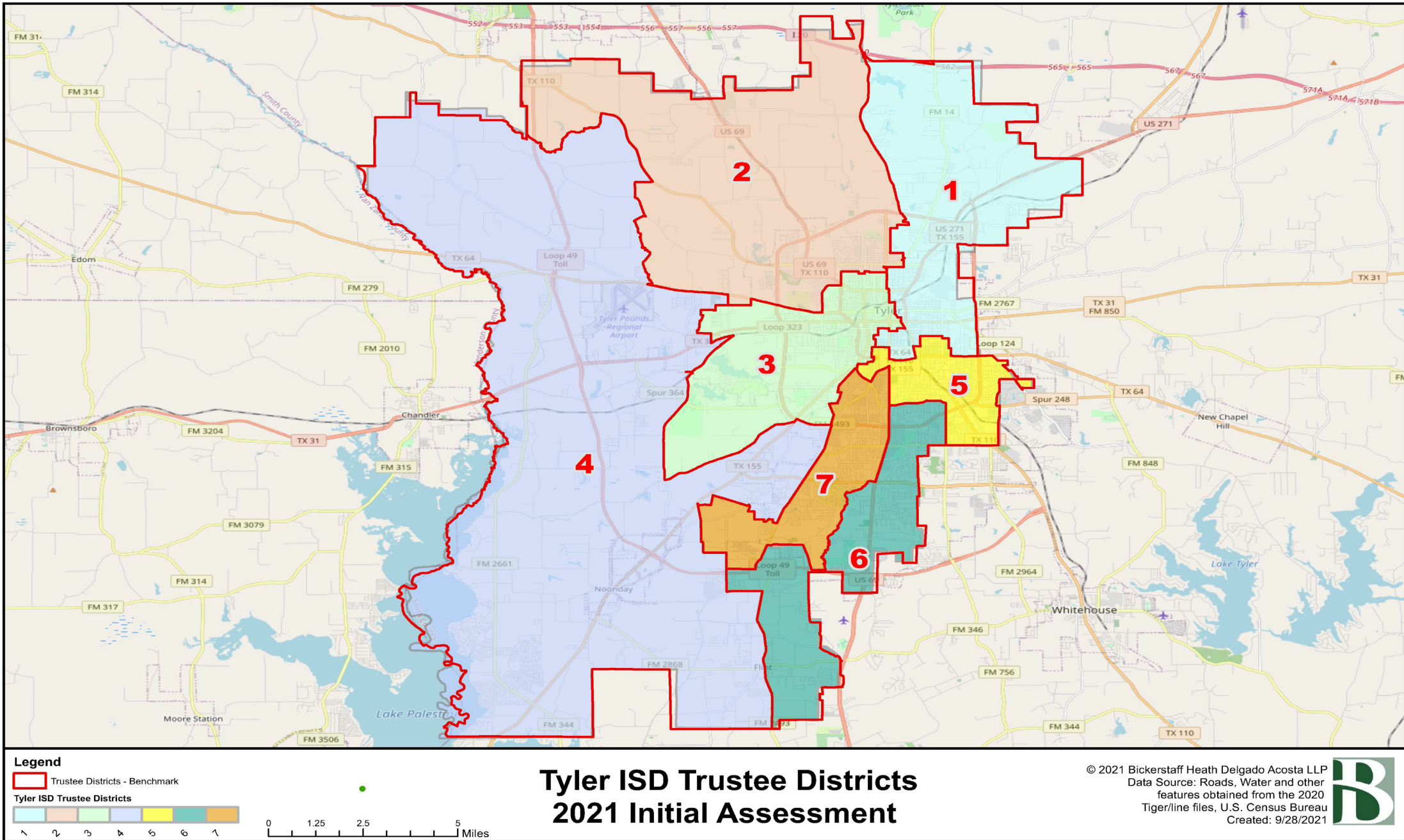
- 10/18/21 at 11 a.m. – Initial Assessment
- 11/4/21 at 11 a.m.– Drawing work session I
- 12/2/21 at 11 a.m. – Drawing work session II
- TBD – Final adoption



**Tyler ISD**

**2011 Districts  
with 2020 Census Data**

## Current Districts



**Tyler ISD**  
**Overall Deviation For Current Trustee Districts**  
**Using 2020 Census Data**



**Plan Name: Tyler ISD Trustee Districts - 2021 Initial Assessment**

**Demographics Report - Summary 2020 Census Total Population**

Plan Last Edited on: 9/29/2021 4:26:54 PM

District	Persons	Ideal Size	Deviation	Hispanic % of Total Population	Non-Hispanic White % of Total Population	Non-Hispanic Black % of Total Population	Non-Hispanic Asian % of Total Population	Non-Hispanic Other % of Total Population
1	17,360	18,407	-5.69%	54.53%	25.74%	16.38%	0.51%	2.83%
2	17,417	18,407	-5.38%	43.03%	14.02%	40.14%	0.33%	2.49%
3	18,738	18,407	1.80%	34.74%	20.53%	41.29%	0.88%	2.56%
4	20,153	18,407	9.48%	15.50%	63.20%	15.10%	1.46%	4.71%
5	17,511	18,407	-4.87%	16.69%	58.60%	17.40%	2.46%	4.83%
6	18,720	18,407	1.70%	9.78%	71.76%	10.23%	3.54%	4.70%
7	18,951	18,407	2.95%	10.44%	70.44%	11.38%	3.70%	4.04%

**Ideal Size: 18,407**

**Total Population: 128,850**

**Overall Deviation: 15.2%**

*Some percentages may be subject to rounding errors.*



**Tyler ISD**  
**Overall Deviation For Current Trustee Districts**  
**Using 2020 Census Data**

**Plan Name: Tyler ISD: Tyler ISD Trustee Districts - 2021 Initial Assessment**



**Demographics Report - Summary 2020 Census Voting Age Population**

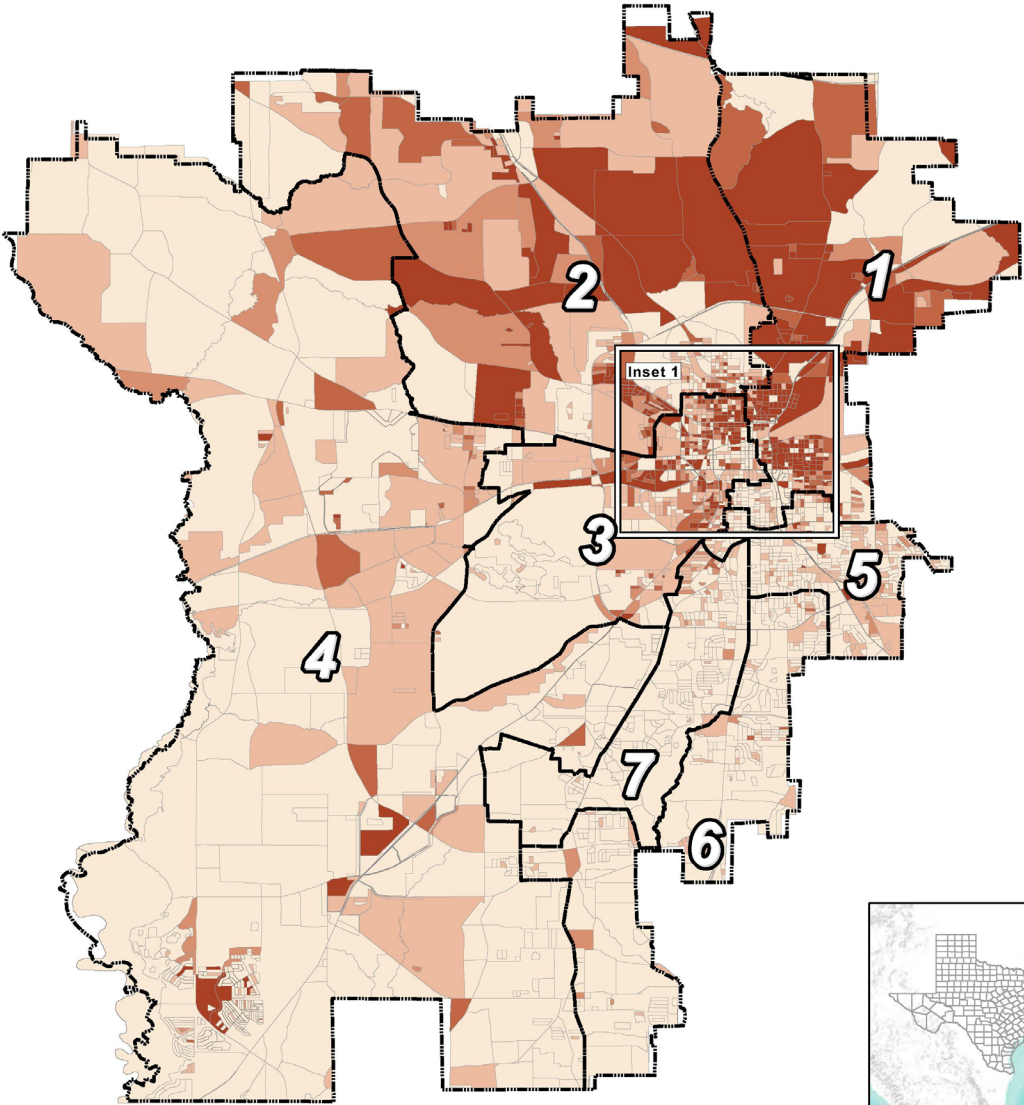
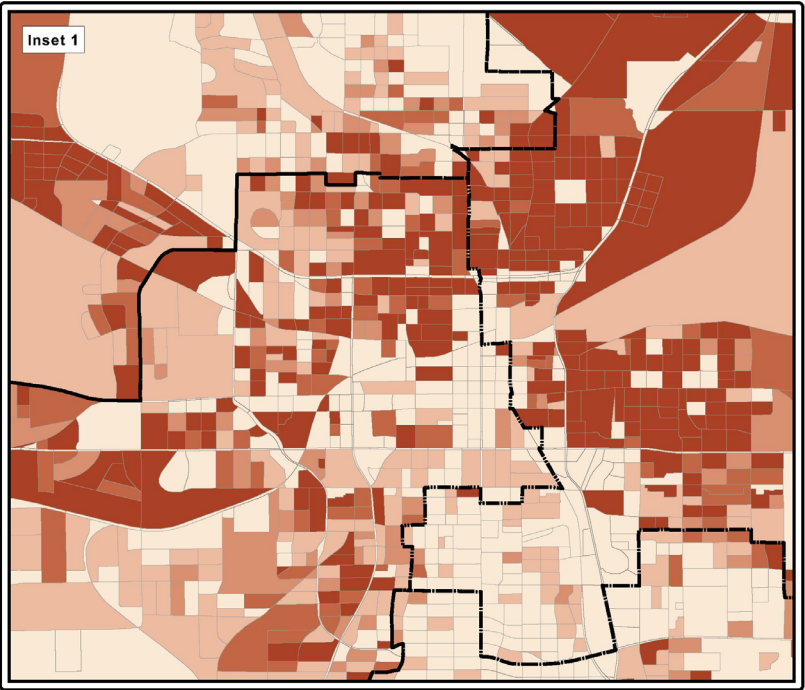
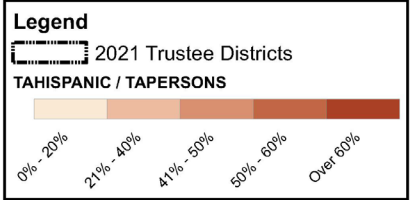
Plan Last Edited on: 9/29/2021 4:26:54 PM

District	Total VAP*		Hispanic % of Total VAP	Non-Hispanic Anglo % of Total VAP	Non-Hispanic Black % of Total VAP	Non-Hispanic Asian % of Total VAP	Non-Hispanic Other % of Total VAP
1	12,522		49.24%	30.51%	16.83%	0.53%	2.87%
2	12,388		37.00%	17.06%	42.97%	0.40%	2.58%
3	14,095		29.71%	24.46%	42.34%	1.01%	2.48%
4	15,408		12.61%	67.56%	14.46%	1.36%	4.01%
5	14,148		14.65%	62.31%	16.39%	2.45%	4.13%
6	14,457		8.40%	74.78%	9.46%	3.36%	4.03%
7	15,529		9.05%	73.46%	10.74%	3.41%	3.35%

\* VAP - Voting Age Population

*Some percentages may be subject to rounding errors.*

# Thematic Maps

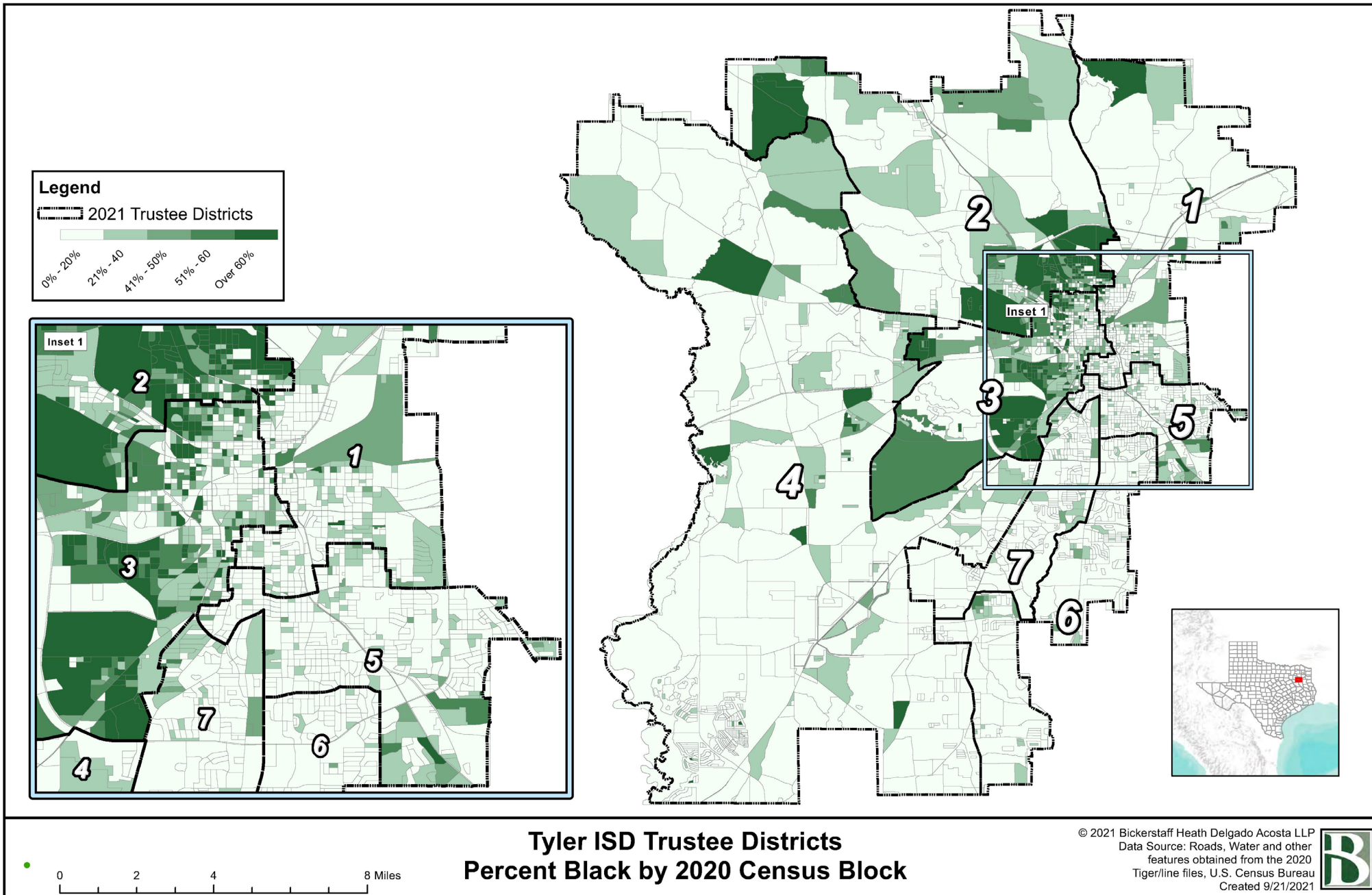


**Tyler ISD Trustee Districts**  
**Percent Hispanic by 2020 Census Block**

© 2021 Bickerstaff Heath Delgado Acosta LLP  
Data Source: Roads, Water and other  
features obtained from the 2020  
Tiger/line files, U.S. Census Bureau  
Created 9/21/2021



# Thematic Maps



# **TYLER ISD**

## **2021 Redistricting**

# Initial Assessment

**BICKERSTAFF HEATH DELGADO ACOSTA LLP**

**3711 S. MoPac Expressway  
Building One, Suite 300  
Austin, Texas 78746  
(512) 472-8021**

[www.bickerstaff.com](http://www.bickerstaff.com)