



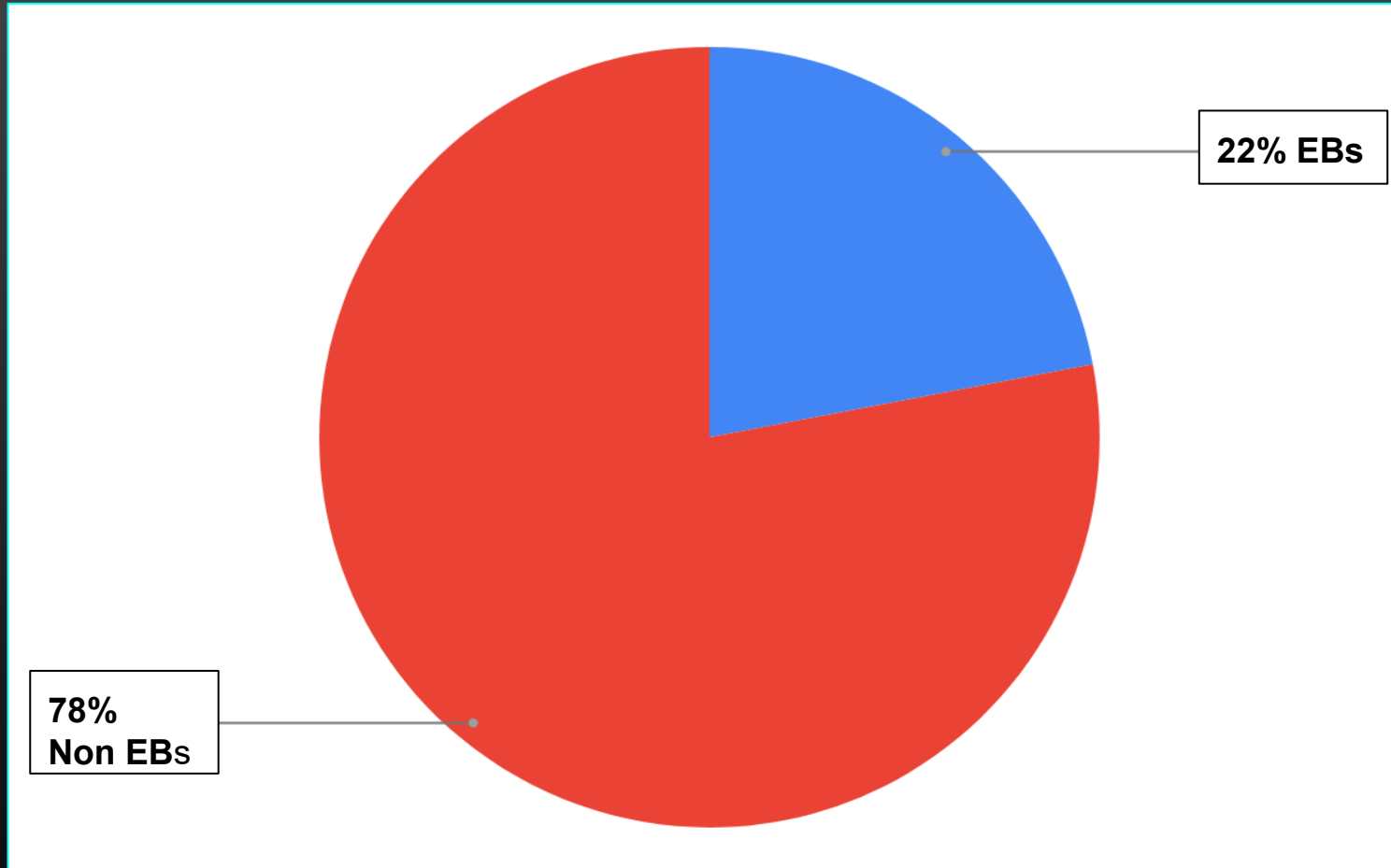
TYLER ISD

SUCCESSFUL STUDENT OUTCOMES

Bilingual/ESL Annual Program Effectiveness Report

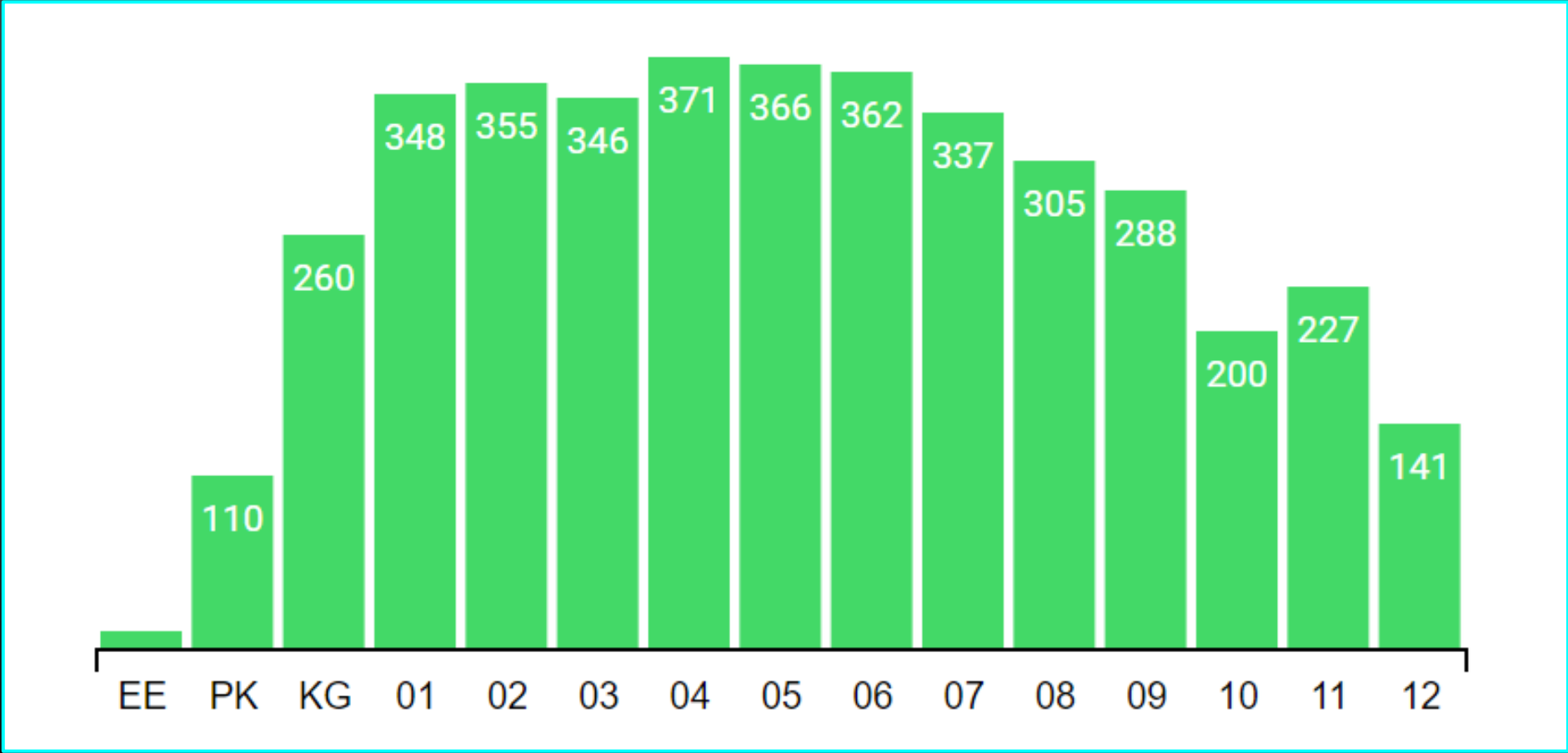
Ana Segulin
October 7, 2021

District Demographics



4,027 Emergent Bilinguals (EBs)
out of
18,118 students

Emergent Bilinguals by Grade Level



Bilingual Exceptions/ESL Waivers

Filed for Waiver-Exemption	2020-21	Obtained Certification	2021-22 Projected Waivers-Exemptions
Bilingual Teachers	0		4
ESL Teachers	49	16	31

Professional Development Plan for Non-ESL Certified Teachers

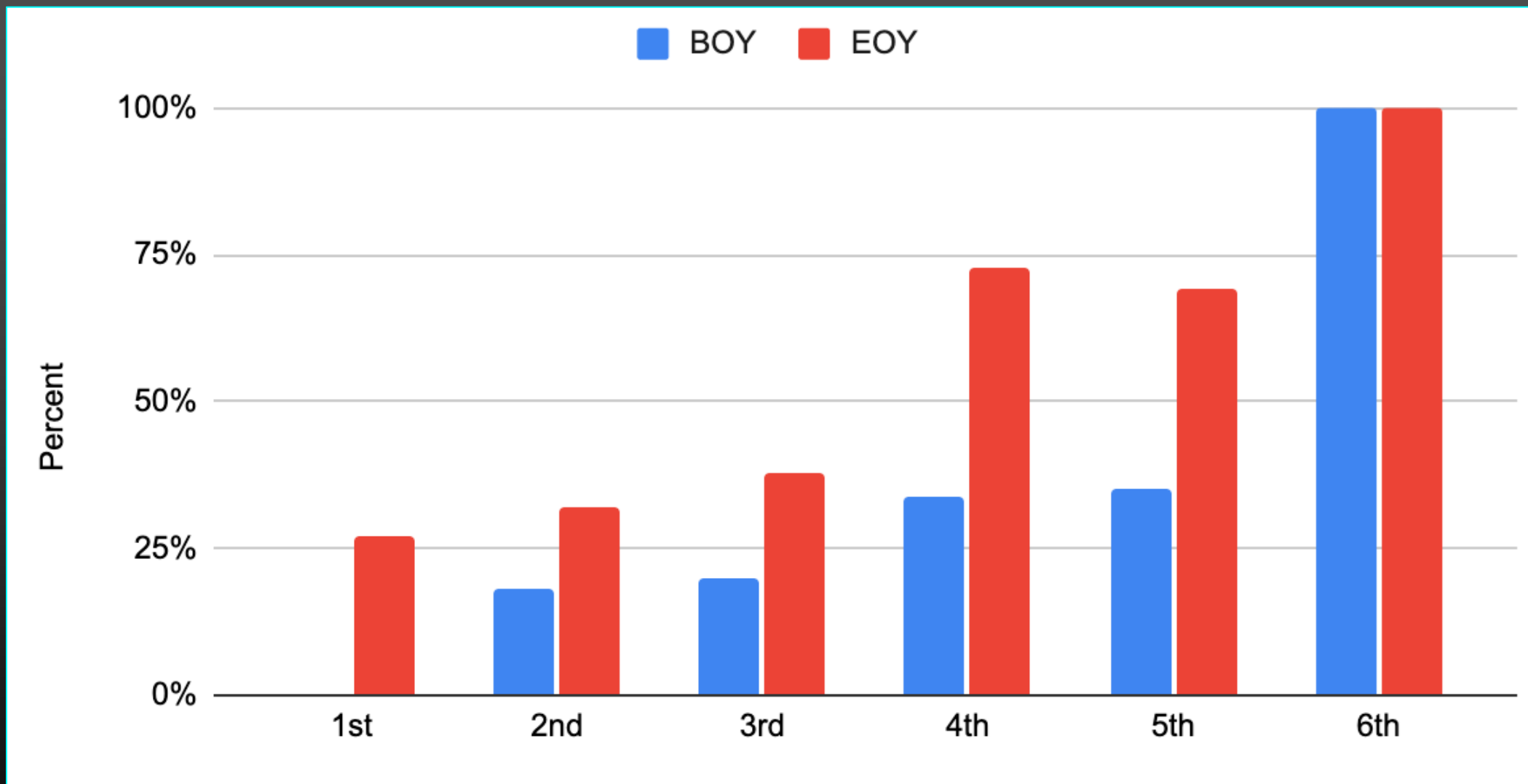
Professional Development

- SIOP Training
- ELPS
- Bilingual/ESL Certification Test Prep.

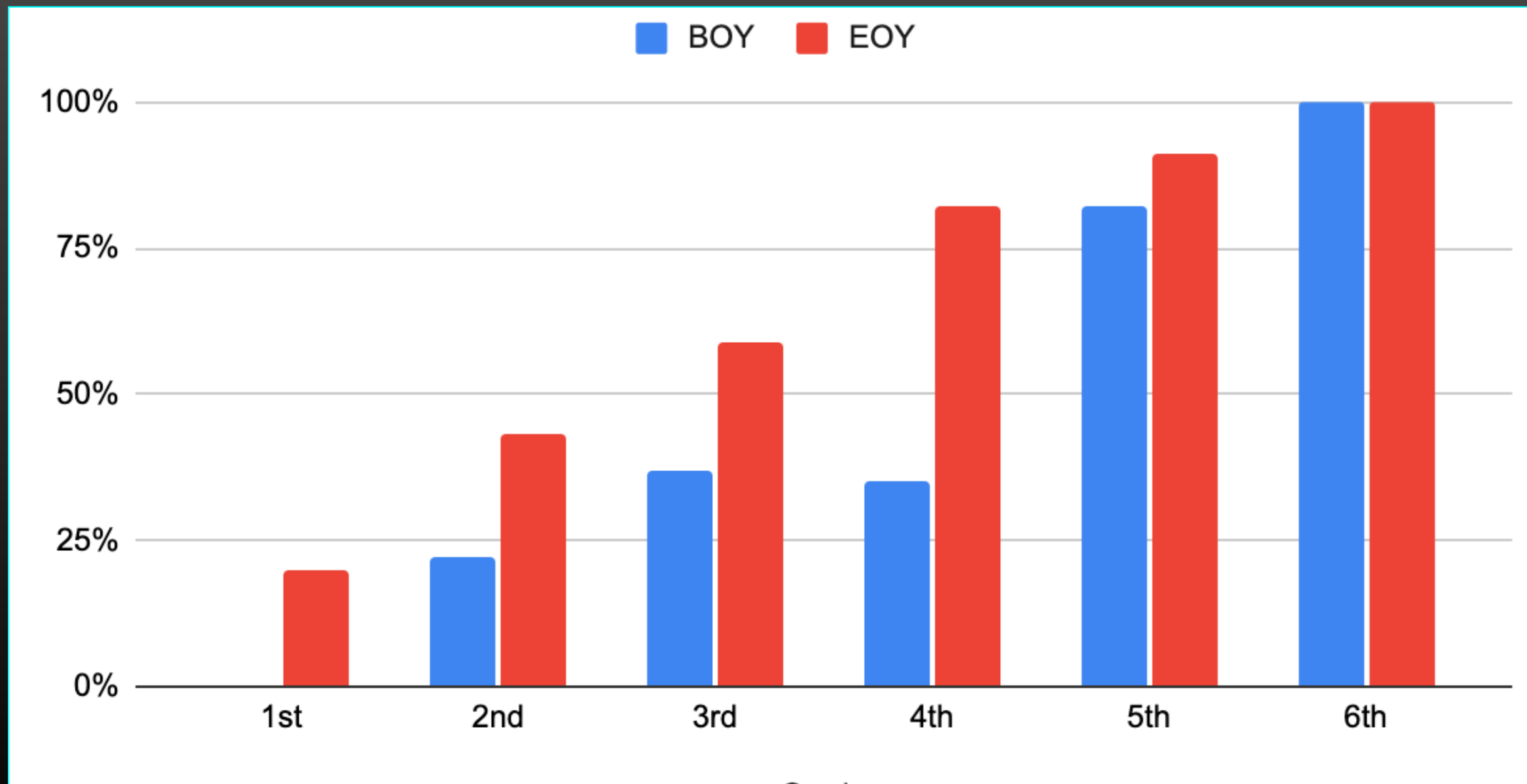
Ongoing on Campus

- PLC/Planning Support
- Individual Coaching Cycles

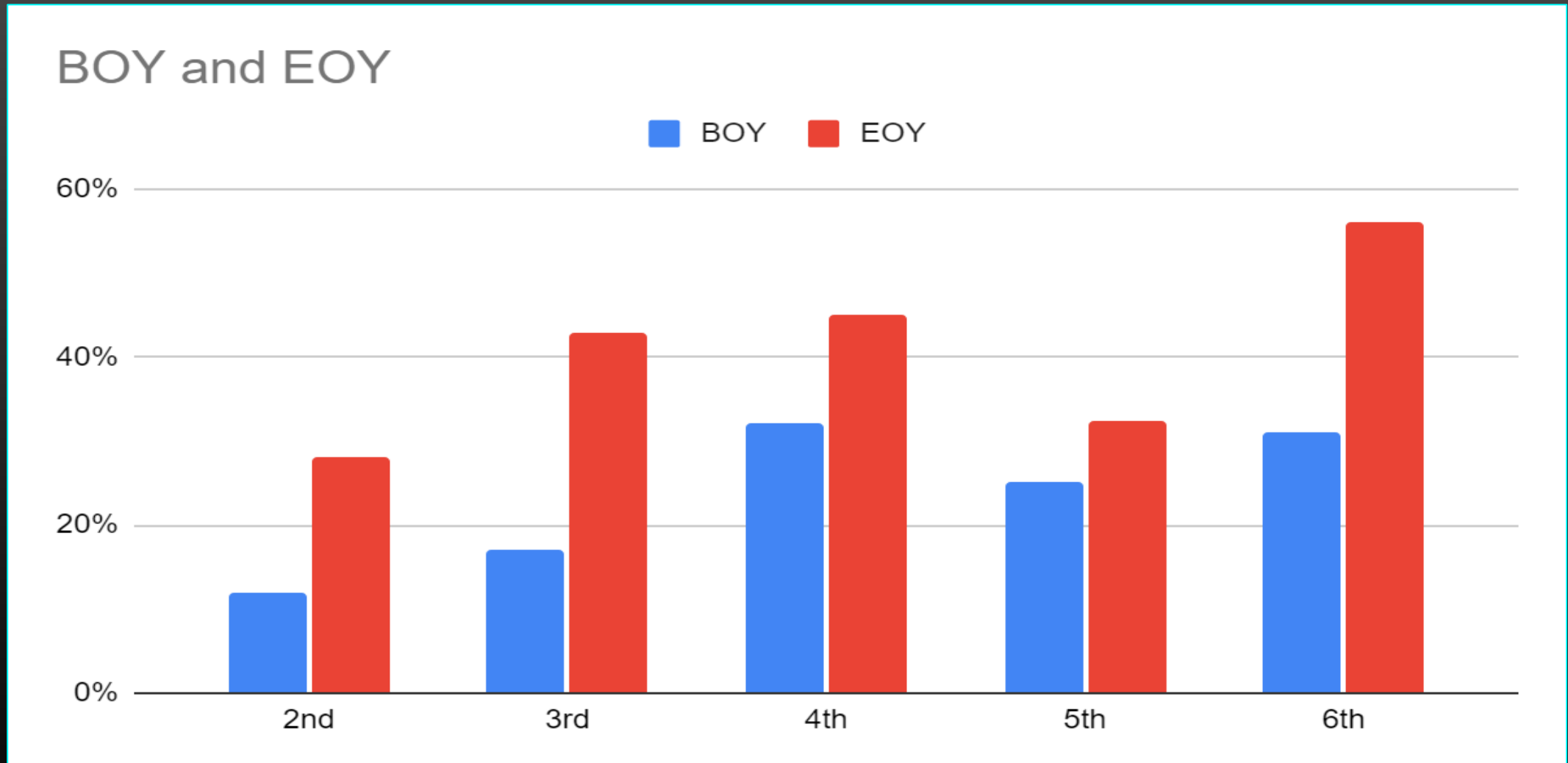
Dual Language - Spanish Language Proficiency (Speaking)



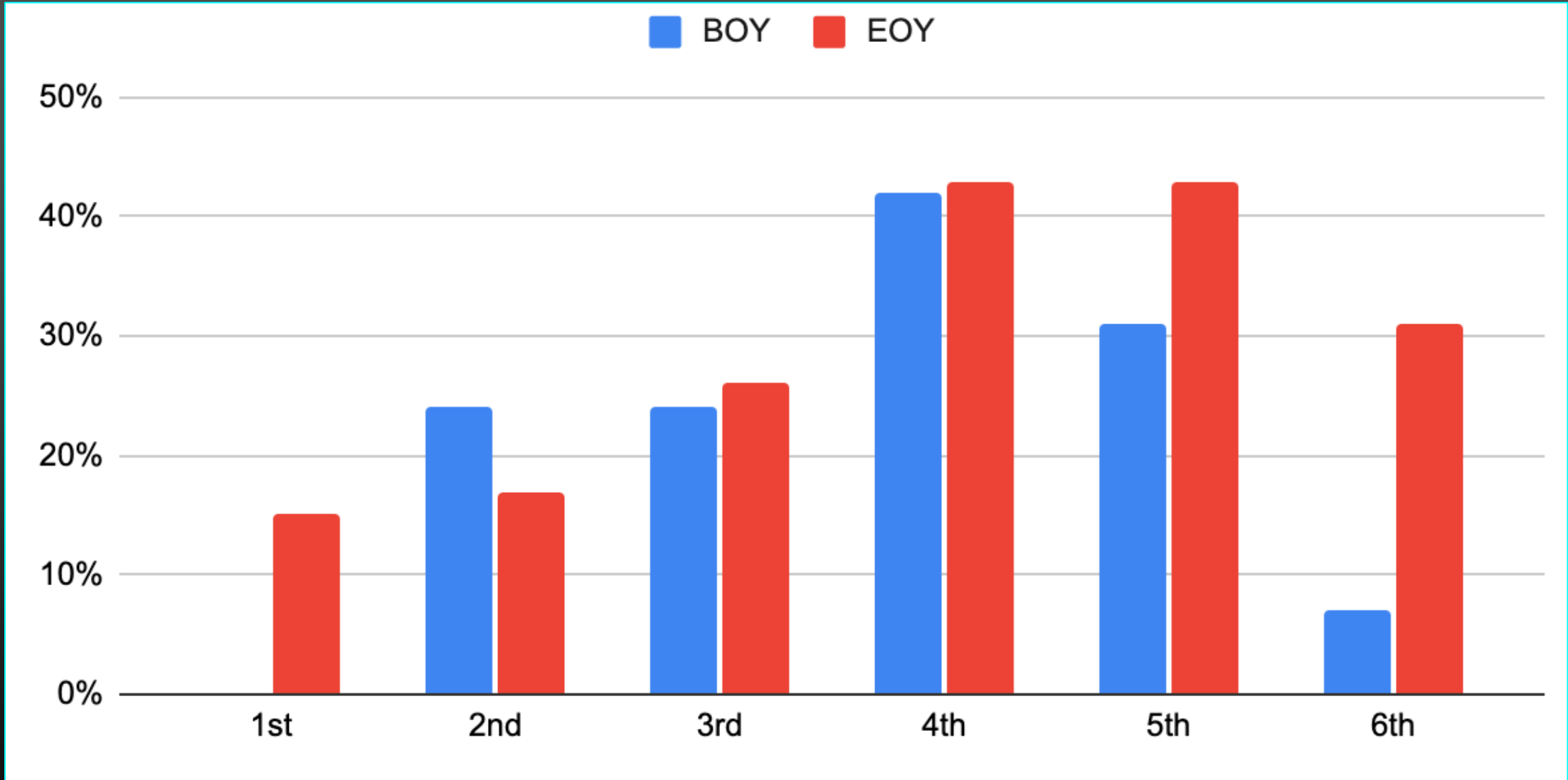
Dual Language - Spanish Language Proficiency (Listening)



Dual Language - Spanish Language Proficiency (Reading)



Dual Language - Spanish Language Proficiency (Writing)



English Language Proficiency

TELPAS Target	Tyler ISD
Pending State release	37%

Campuses met Progress: 15

TELPAS - Most Improved

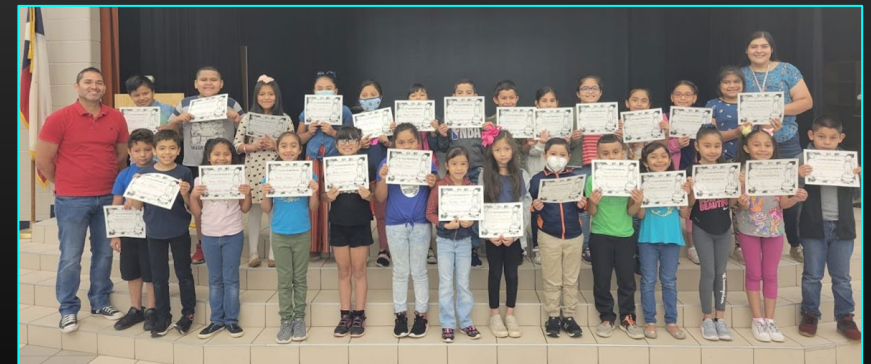
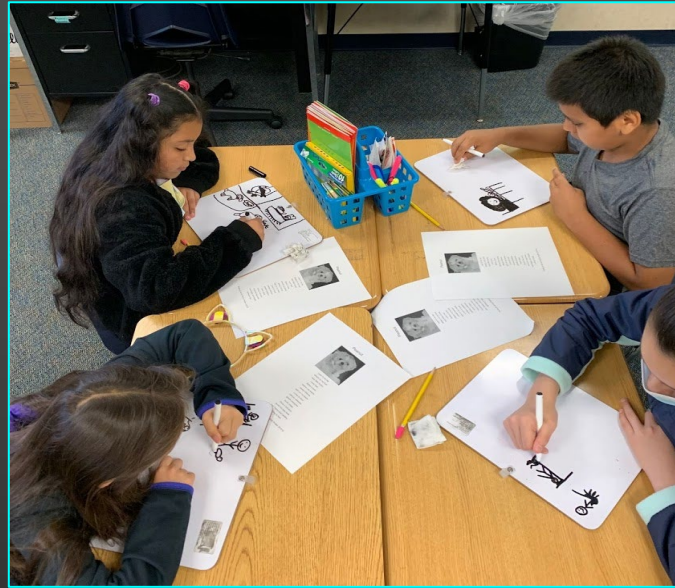
Douglas EL	28%
Peete EL	19%

Bilingual/ESL Summer School

PK-3

Griffin EL: 215

Bonner EL: 183



Students Exited from the Program

67

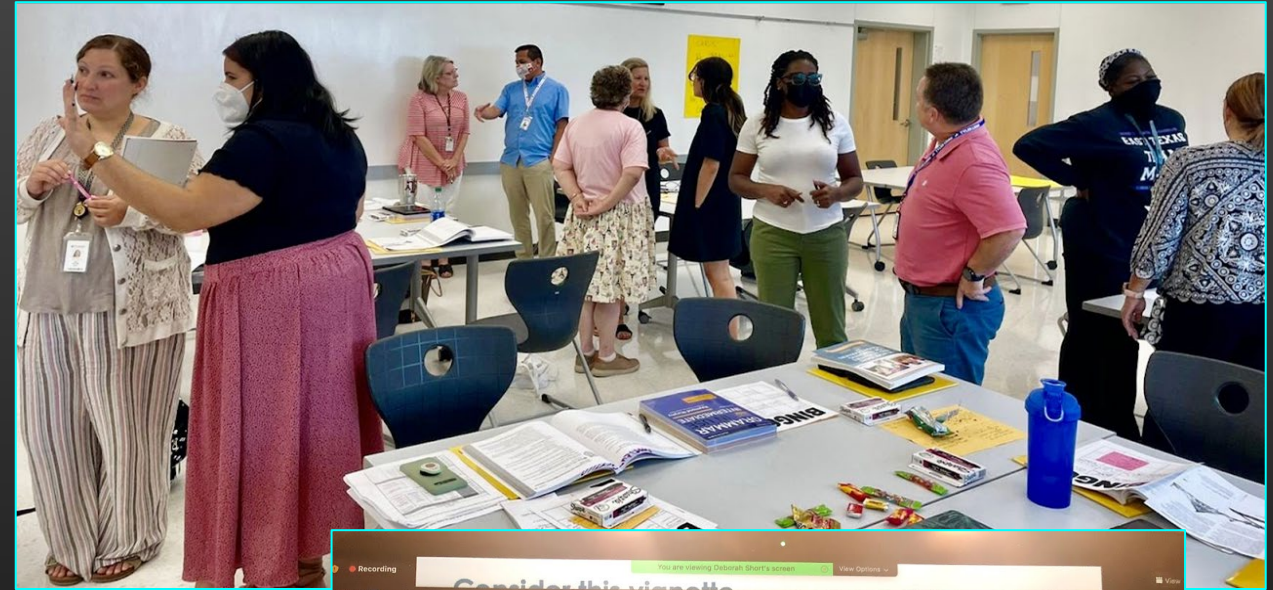
Bilingual
32

ESL
27

Parent Denial
8

Teachers Trained 2020-21: 727

Regional: 15
State: 13
National: 31



The Bilingual/ESL Department

Nadia de la Cruz : Bilingual/ESL Instructional Facilitator

Ana Jimenez: Bilingual/ESL Instructional Facilitator

Kelsins Santos: Bilingual/ESL Instructional Facilitator

Brenda Alejos: Technology Support

Selene Zavala: PEIMS Clerk

Jessica Allen: Testing Clerk

Ana Segulin: Director

Maria Zuniga: Administrative Assistant



“Embracing all language learners through quality instruction to achieve successful student outcomes”



TYLERISD.ORG
