

School Board & City Council Ad Hoc Committee re: New School Facility

February 14, 2022



School				Exist. Ed Space Capacity		Exist. Total SF (incl. educ. only)	Construction
Grades		Enrollment		Capacity Difference			
Condition							
Chamberlain Street School	B	K-5	335	238	97 Undersized	39,645 3 Portables	1961 w/ 2000 KD addition
East Rochester School	A	PK-5	221	366	-145	50,914	1968 w/ '00 preschool & '15 additions
Gonic School	C	K-5	184	198	-14 At Capacity	37,239	1897 w/ 1987 major additions
Maple Street Magnet School	B	K-5	113	72	41 Undersized	14,465	1928
McClelland Elementary School	C	K-5	345	376	-31 At Capacity	55,652	1957-59 w/ 1988 additions
Nancy Loud School	D	K-4	73	99	-26	15,870	1880
School Street School		K-4	67	90	-23	13,259	1911
William Allen School	C	K-5	286	257	29 Undersized	38,283 2 Portables	1964 w/ '73 & '00 additions



Data

Capacity

- Overall district enrollment is close to capacity (88%). 90% is maximum recommended.
- Enrollment exceeds capacity in three Schools
 - Chamberlain, Maple Street and William Allen Schools
- Enrollment is close to capacity in two Schools.
 - Gonic and McClelland Elementary Schools



Data

Conditions

- **Two School buildings are over 100 years old and are least adaptive to modern education curriculum (School Street and Nancy Loud).**
 - **Small Site/ Campus**
 - **Vintage Construction (less adaptable)**
 - **High Maintenance and Renovation Cost**
 - **3 Year Historical Cost for small older schools & modulares**



Goals

- **DISTRICT WIDE**

- Address Modular Classrooms (Portables)
 - Chamberlain Street School
 - William Allen School
- Enhance Educational Program offerings and spaces
- Reduce Operational and Maintenance Costs



Options

Middle School 5th Grade Addition

Advantages

- Relieves capacity pressure in all Elementary Schools
- Allows for selective building closures and/ or portable removal throughout the district.
- Brings all of fifth graders to one location



Disadvantages

- Not enough Core/ common space for all students at RMS
- Early and late lunches (9 am to 3 pm)
- Fifth Graders out of Elementary School environment
- Large School for Fifth Graders: ± 1150 students
- Congested site for drop off/ pick up now (before addition).
- Addition takes valuable open space from campus



Options

Chamberlain School Addition

Advantages

- Relieves capacity pressure this building.
- Removes portables at this school
- Secure entrance



Disadvantages

- Congested site for drop off/pick up now. Campus needs reduction in students.
- Not a district solution:
 - Does not relieve overcrowding/educational programming issues at other schools.
- Does not consolidate or reduce number of schools
- Surrounded by wetlands
- Costly Electrical upgrades without Education benefit (\$3M)



Options

New Elementary School

Advantages

- Improves educational environment for learning
- Portable removal throughout the district.
- Relieves capacity pressure in all Elementary Schools
- Allows for selective closures of expensive/ vintage buildings.
- Reduced operating costs
- Neighborhood schools located where needed.
- Keeps fifth grade in elementary environment

Disadvantages

- Cost of new construction/ campus



Recommendations

- **A new Kindergarten through 5th Grade Elementary School**
- **350± Student Capacity**
- **8 to 14 Acre Campus (flat upland)**



Rochester School Department
POSSIBLE Funding for New Elementary School
2022

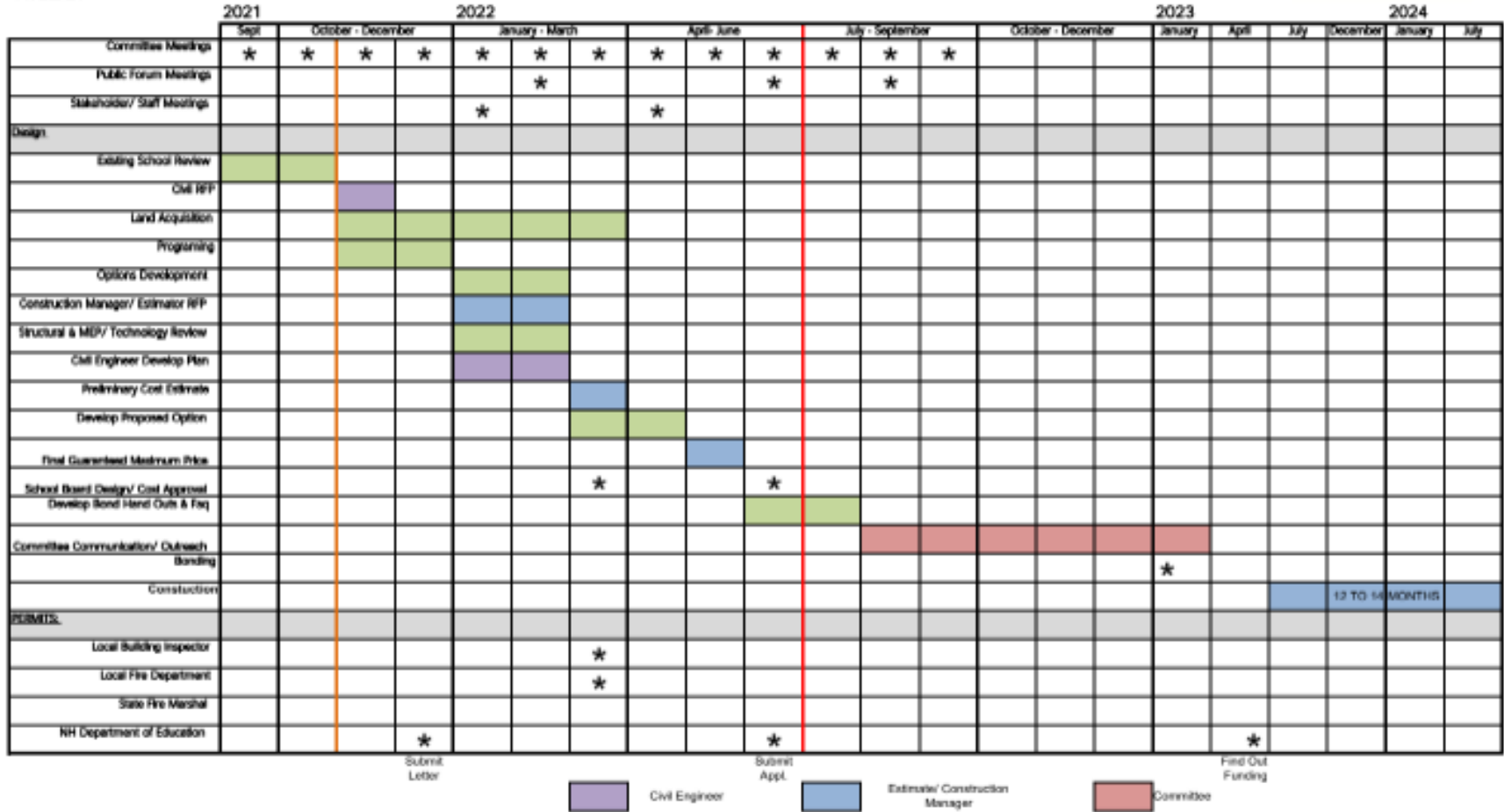
New School (estimate)		\$25,000,000
Less:		
Capital Reserve Fund	\$ (1,296,285)	
Potential Additional Capital Reserve from FY21 Surplus		??**
ESSER Grant Funds (grant ends 9/30/2024)		\$ (8,500,000)
Subtotal		\$ 15,203,715
School Building Aid (based on 60% of \$20M)		\$ (12,000,000)
Remaining		\$ 3,203,715

**Current Charter allows for up to 50%



Schedule Draft

Rochester School, District
Rochester, NH
PROJECT SCHEDULE DRAFT
11/22/21



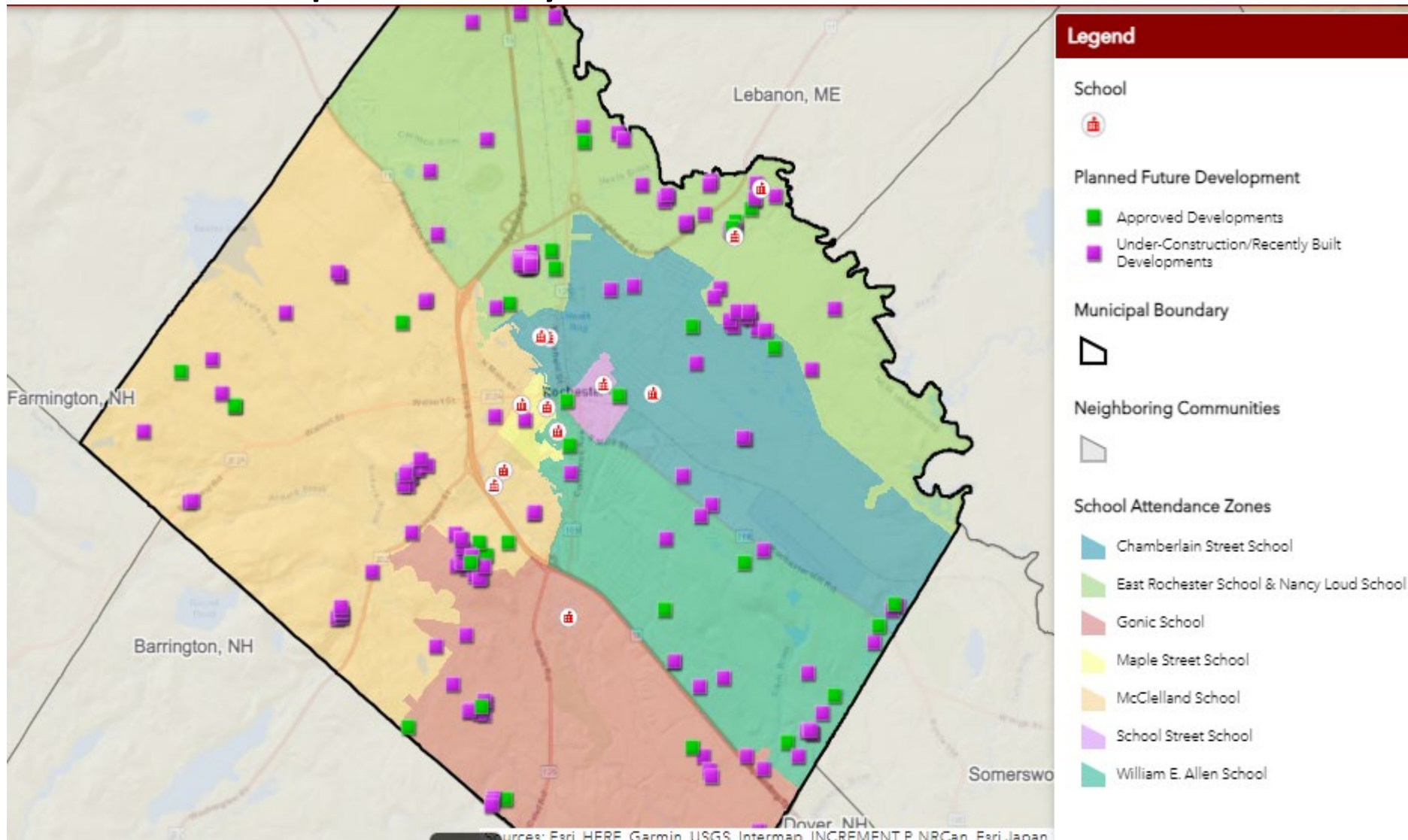
GIS info

AS OF APRIL 2021

Attendance Zone	Type	Count of Developments	Sum of Planned Units
Chamberlain Street School	Approved Developments	4	117
	Under-ConstructionRecen	12	128
Chamberlain Street School Total		16	245
East Rochester School & Nancy Loud School	Approved Developments	10	111
	Under-ConstructionRecen	72	103
East Rochester School & Nancy Loud School Total		82	214
Gonic School	Approved Developments	5	137
	Under-ConstructionRecen	20	104
Gonic School Total		25	241
Maple Street School	Under-ConstructionRecen	1	1
Maple Street School Total		1	1
McClelland School	Approved Developments	10	178
	Under-ConstructionRecen	56	175
McClelland School Total		66	353
School Street School	Approved Developments	1	21
School Street School Total		1	21
William E. Allen School	Approved Developments	7	122
	Under-ConstructionRecen	16	61
William E. Allen School Total		23	183
Grand Total		214	1258



GIS Developments by School Zone



Thank you!!

Questions?

