

Clark-Pleasant Community School Corporation

Weekly Breakfast Menu on Back!

*Menu Subject to Change

Sawmill Woods Preschool Menu

2018 - 2019

Monday	Tuesday	Wednesday	Thursday	Friday
Week 1 - Served the Weeks of: 7/23, 8/13, 9/3, 9/24, 10/29, 11/19, 12/10, 1/7, 1/28, 2/18, 3/11, 4/15, 5/6				
4x6 Cheese Pizza Sweet Potato Puffs Apple Slices 1% Milk Carton	Hot Dog Bush's Baked Beans Fresh Kiwi 1% Milk Carton	Teriyaki Beef Dippers Whole Grain Eggroll Fresh Side Salads Orange Slices 1% Milk Carton	Chicken Ranch Wrap Crinkle Cut Fries Banana 1% Milk Carton	Yogurt Cup String Cheese, Goldfish Green Beans Mandarin Oranges 1% Milk Carton
Week 2 - Served the Weeks of: 7/30, 8/20, 9/10, 10/1, 11/5, 11/26, 12/17, 1/14, 2/4, 2/25, 4/1, 4/22, 5/13				
Ham & Cheese Rippers Cheesy Broccoli Apple Slices 1% Milk Carton	Turkey & Cheese Rollups Tostito Scoops Fresh Cucumbers Fresh Kiwi 1% Milk Carton	Cheesy Bosco Sticks Marinara Dipping Sauce Fresh Baby Carrots Diced Pineapple 1% Milk Carton	Hamburger/ Cheeseburger Green Beans Orange Slices 1% Milk Carton	Chicken Smackers Mashed Potatoes Applesauce 1% Milk Carton
Week 3 - Served the Weeks of: 8/6, 8/27, 9/17, 10/22, 11/12, 12/3, 12/31, 1/21, 2/11, 3/4, 4/8, 4/29, 5/20				
Tyson Chicken Drumstick Tostito Rounds Celery Sticks Apple Slices 1% Milk Carton	Breakfast-for-Lunch Potato Smiles Diced Peaches 1% Milk Carton	Cheesy Bread Sticks Marinara Dipping Sauce Fresh Side Salads Orange Slices 1% Milk Carton	Mini Corn Dogs Fresh Baby Carrots Banana 1% Milk Carton	Fish Shapes Broccoli Florets Applesauce 1% Milk Carton



→ For more information, visit us online at www.cpcsc.k12.in.us → click "Food Service" tab!

Lunch \$2.45 | Reduced Price \$0.40 | Adult meals \$3.50

"This institution is an equal opportunity provider."



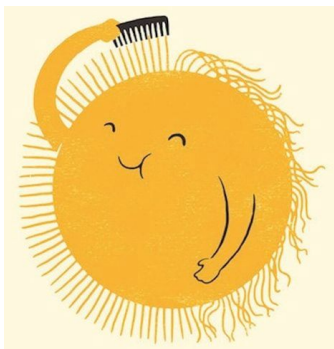
WEEKLY



BREAKFAST MENU

Monday	Tuesday	Wednesday	Thursday	Friday
Mini Cinnis Daily Fresh Fruit 1% Milk Carton	Egg & Cheese Breakfast Biscuit Diced Pineapple 1% Milk Carton	Cinnamon Roll Daily Fresh Fruit 1% Milk Carton	Maple Bites Mandarin Oranges 1% Milk Carton	Pancake Wrap Diced Peaches 1% Milk Carton

**menu subject to change*



Breakfast \$1.50 | Reduced Price \$0.30 | Adult meals \$2.50