

# WASD Community Resource Directory



Created By: Waupun Area School District  
Last Revised- January 2022

# Table of Contents

Before/After School Programs .....	11
Childcare.....	10 & 11
Clothing.....	10
Financial Assistance .....	4
Food Support .....	5 & 6
Housing .....	8 & 9
Internet Assistance .....	9
Mental Health Support .....	3
Transportation .....	6 & 7
Utilities .....	7
Youth Mentor Programs .....	11

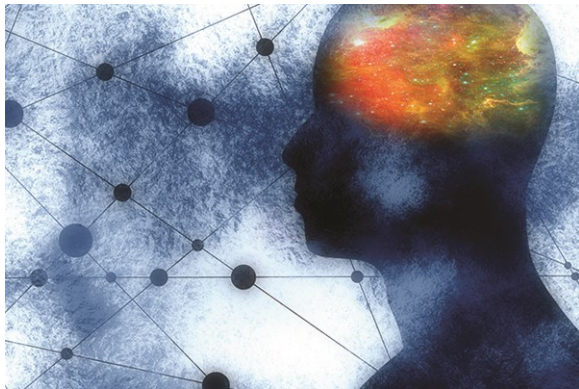
Please contact the Waupun Area School District **Family Advocate** if you have any questions regarding mental health, food, finances, transportation, medical, and any other concerns you have for yourself or your child.

920-324-9322 ext. 2236

S3

Support • Service • Success





## Mental Health Support

## Church Health Services

115 N. Center St., Beaver Dam WI 53916  
www.churchclinic.org

920-887-1766

Whether it's coping with grief, substance abuse, depression, anxiety, relationships, or any of life's many challenges, Church Health Services counselors are here to help. Counseling is available at our offices in Beaver Dam or within the Waupun Area School District. We are a state-certified mental health clinic that offers affordable counseling services to families and individuals of all ages in our area communities.

## Collaborative Wellness

303 Watson St. Suite D, Ripon, WI 54971  
www.collaborativewellnesswi.com

920-896-0189

Provides the community with quality mental health services, using the latest technologies and advances in mental health and substance abuse care. Individual and family counseling is available at our office in Ripon or within the Waupun Area School District.

## Open Door Counseling

199 County Road DF, Juneau, WI 53039  
[www.agnesian.com/services/behavioral-l](http://www.agnesian.com/services/behavioral-l)

920-386-4094

A licensed therapist services students at Rock River Intermediate School who reside in Dodge County. The county also provides ongoing services for adults and families at the Human Services building in Juneau. To inquire about services please call Dodge County Clinical Services at 920-386-4094 and ask to schedule an intake.

### Outpatient Behavioral Health Services:

# Waupun Memorial Hospital

620 W Brown St., Waupun, WI 53963  
[www.agnesian.com/services/behavioral](http://www.agnesian.com/services/behavioral)

920-926-4200

Our highly-trained team of professionals includes psychiatrists, addictionologist, psychologists, psychotherapists, nurses, family therapists, social workers, and certified alcohol and other drug abuse (AODA) counselors. Individual and family counseling is available at our office or within the Waupun Area School District.

## Notes:

[illegible]



## Financial Assistance

**ADVOCAP, Inc.**

www.advocap.org

920-922-7760

19 W. First St. P.O. Box 1108, Fond du Lac, WI

Possible assistance with affordable housing, business development, employment and training, food/nutrition, getting out of poverty, head start, home energy conservation, transportation, and volunteer opportunities.

## Salvation Army (FDL)

www.salvationarmy.org

920-923-8220

237 N Macy St., Fond du Lac, WI

Home to a food pantry, warming shelter, social services, crisis prevention, and self-sufficiency programs.

## St. Vincent de Paul (FDL County)

www.svdpdfdlc.org

store: 920-322-9505

330 N Peters Ave., Fond du Lac, WI

assistance: 920-922-3650

Donated clothing to be purchased at reduced cost. Furniture and other household items available. Emergency financial relief. Emergency financial support.

## St. Vincent de Paul (Dodge County)

[www.svdpdodgecounty.org](http://www.svdpdodgecounty.org)

920-885-6971

125 Dodge Dr. Suite 100, Beaver Dam, WI

Donated clothing to be purchased at reduced cost. Furniture and other household items available. Emergency financial relief. Emergency financial support.

## Waupun Food Pantry

waupunfoodpantry@gmail.com

920-324-4000

12 S Mill St., Waupun, WI

Provides assistance with clothing, food, and emergency financial support.

## Notes:

[illegible]







## Food Support Cont.

### **Living Hope Community Church Food Pantry**

[Livinghopefoxlake.com/ministry/food-pantry/](http://Livinghopefoxlake.com/ministry/food-pantry/)

920-520-0166

103 Spring St. Fox Lake, WI 53933

[livinghopefp@gmail.com](mailto:livinghopefp@gmail.com)

Serves people living in the Fox Lake, WI and surrounding communities who are experiencing hard times and need some extra assistance with food and other basic living essentials.

### **Second Harvest Mobile Food Pantry**

[secondharvestmadison.org](http://secondharvestmadison.org)

608-223-9121

Distribution location: Moraine Park Technical College

700 Gould St. Beaver Dam WI 53916

Occurs every 2nd Saturday of the month, beginning at 8am. Due to Covid, all food distribution will take place outside as a drive-up. Please stay in your vehicle. You will be directed on procedure once you arrive. No restrictions. Everyone in need is welcome and served. No ID necessary.

## Transportation

### **WASD Transport Services**

<https://www.waupun.k12.wi.us/o/WASD/page/bus-transportation--14>

Transportation Coordinator

920-324-9322 Ext. 2200

WASD offers transportation to all students outside a 2 miles radius of the school the student attends. There are also shuttle stops throughout town. Prior to riding the school bus all students will need to have completed a Bus Registration Form to be eligible for transportation. Please contact WASD Transportation Coordinator for more information.

### **Dodge County Transportation Program**

<https://www.co.dodge.wi.gov/home/showdocument?id=34644>

Office hours: M-F 8-4:30 or by appointment

920-386-3832

Provides reliable rides both within and outside Dodge Co. to eligible Dodge Co. residents. Please call or visit their website to determine your eligibility.

Donations encouraged. No one will be denied a ride if they cannot make a donation.











## Clothing

## Waupun Food Pantry

waupunfoodpantry@gmail.com

920-324-4000

12 S Mill St., Waupun, WI

Provides gently-used clothing for families in need. Please call the Wau-pun Food Pantry for more information or schedule a time to gather clothing items.

## Bargains Galore Thrift Store

810 W Main St., Waupun, WI 53963

920-324-8677

www.bargainsgalorethriftstore.com

Stocked with gently-used clothes and home goods at a discounted price.  
Open on Thursday 10 AM– 8PM, Fridays 10 AM– 2 PM, and Saturdays  
10 AM– 2 PM.

## Goodwill

904 S Main St., Fond du Lac, WI 54935

920-923-5246

130 Frances Ln., Beaver Dam, WI 53916

920-885-3109

www.amazinggoodwill.com

Goodwill not only offers top quality, gently used clothing, furniture and household items, but we also provide an assortment of new — never been used items. You will be amazed by the assortment of new product you will find scattered throughout the store! Both locations are open 9AM—7PM Mondays—Saturdays and 9AM—5PM on Sundays.

## Childcare

# Wisconsin Shares Child Care Subsidy Program

50 N Portland St., Fond du Lac, WI 54935

888-446-1239

199 County Rd DF, Juneau, WI 53039

888-794-5556

[www.dcf.wisconsin.gov/wishares](http://www.dcf.wisconsin.gov/wishares)

The Wisconsin Shares Child Care Subsidy Program supports low-income working families by subsidizing a portion of the cost of quality child care while the parents or caregivers are working or participating in another approved activity.



## Notes:

[illegible]

Are you concerned about your child because of depression, anxiety, relationship or family issues, behavior problems or anger signs?

Do you have questions regarding mental health, food, finances, transportation, or medical needs?

For these or any other concerns you have for yourself or your child, please contact the Waupun Area School District Family Advocate:

920-324-9322 ext. 2236



Waupun Area School District  
950 Wilcox Street  
Waupun, WI 53963  
920-324-9341  
[www.waupun.k12.wi.us](http://www.waupun.k12.wi.us)