



# Lincoln Primary

**Bulletin**

**May 19, 2022**

## Calendar of Events

**May 20<sup>th</sup>** - Community Clean Up Day – 9am – 10am

- 2<sup>nd</sup> - Dwyer and baseball fields
- 1<sup>st</sup> – District Office and lot behind – towards walking trail
- K – Around School
- Early K – Playground

**May 23<sup>rd</sup> – 27<sup>th</sup> – Benchmark Assessment Window for DIBELS 8<sup>th</sup> and NWEA**

**May 27<sup>th</sup>** – Early K Field Trip to Butte Carousel

**May 30<sup>th</sup> - No School – Memorial Day**

**May 31<sup>st</sup>** – Kinder Fieldtrip to Opportunity and Washoe Theatre

**June 1<sup>st</sup>** – 3 Year Old Classroom Field Trip – Washoe Park and Fish Hatchery

**June 1<sup>st</sup>** - 1<sup>st</sup> Grade Field Trip to Commons and Washoe

**June 1<sup>st</sup>** – Transition Day for 2<sup>nd</sup> to Fred Moodry

**June 2<sup>nd</sup>** – Early K transition to K

**June 2<sup>nd</sup>** - 2nd Grade Field Trip – Bowling and Walking Trails

**June 3<sup>rd</sup>** – K and 1<sup>st</sup> Transition Day

**June 3<sup>rd</sup>** – 6th Grade Promotion Ceremony – 1pm

**June 6<sup>th</sup>** – Field Day – Mitchell Stadium

**June 7<sup>th</sup>** – Promotion Ceremonies – Washoe Theatre

Early K: 9:30AM

2<sup>nd</sup> – 11:30AM

**June 7<sup>th</sup> – Last Day for Students – Early Dismissal**

## Nurse Corner

As you may know, Anaconda is experiencing a bump in local COVID cases (the latest Omicron Subvariant BA.2.12.1). The current strain is highly contagious. Symptoms are more cold-like in nature than previous strains. If you would like more home test kits, please notify the lead school nurse at 563-6242 x.1509. Free test kits are available to enrolled student households while supplies last.

Should you have a positive COVID home test result, scan the attached QR code with your smartphone, or go to this DPHHS link and follow the prompts:

[https://montanagovernment-aajle.formstack.com/forms/montana\\_covid\\_home\\_test\\_reporting](https://montanagovernment-aajle.formstack.com/forms/montana_covid_home_test_reporting)

The local health department should receive the positive report from DPHHS within 6 hours and provide you with follow up support.

If your student has a positive result, follow the process above and notify your student's school nurse (x.1317 for FMIS & Lincoln, or x.1509 for AJSHS & CFE). Once the result is reported to the health department, your student's absences will be excused and a return-to-school plan can be established.

If your student is symptomatic with cold-like symptoms, please encourage disposable mask use to prevent exposure of close contacts should your student later test positive for COVID. Free rapid testing is also available at school or as a drive-thru option at school by contacting the school nurse associated with your student's school.

Have a safe and healthy spring!



Community Cleanup Day  
is May 20<sup>th</sup>  
First and Second Grade  
Will Be Leaving at 9am

**OVER →**

# Volunteers Needed for Field Day

I still need volunteers to help with Field Day on June 6<sup>th</sup> at Mitchell Stadium. If you are interested in running a station or helping out please contact Norah Barney at [nbarney@anacondaschools.org](mailto:nbarney@anacondaschools.org) or 406-563-6141, 1302 or send me a SeeSaw message.



## Transition Day Information

### What/When is Transition Day?

June 1<sup>st</sup> – 2<sup>nd</sup> Grade Students

June 2<sup>nd</sup> – 3 Year Old Students and Early K Students

June 3<sup>rd</sup> – K and 1<sup>st</sup> Grade Students

Transition Day is when we have the students spend time with next year's teachers. Keep in mind that these placements are tentative due to personnel changes that will undoubtedly happen over the summer and coming weeks.

### When will I find out who my child's teacher is?

Class placement letters will be sent home with your child's report card and test scores the week of June 10<sup>th</sup>

### How do I know what supplies my child needs for next school year?

Supply lists will be sent home with your child's report card the week of June 13<sup>th</sup>

## No School Memorial Day May 30th

## Principal Corner

### Field Trips

All Field Trips are currently covered with chaperones. If something changes your child's teacher will let you know via SeeSaw.

### Teaching and Learning

The Lincoln teachers pride themselves on making sure we continue to teach until the very last minute of the school year. So, it's important that we don't have classroom interruptions especially during testing week (Week of May 23<sup>rd</sup>). **Please continue to schedule doctor's appointments after school** and inform your child's teacher if you plan on picking your child up early so we don't have to interrupt the learning of the other students to call a student to the office.

### Allergy Form(s)

Attached to the newsletter are some Food Allergy forms. A hard copy will be sent home on Monday. **ONLY FILL the forms out if your child has a FOOD allergy. Note your physician will need to sign if your child has a SEVERE allergy.**

### Next Year's Principal

The interview committee offered the Lincoln Primary Principal position to Ms. Holly Bjerke, pending board approval.

There will be a special board meeting next week where the board will consider the recommendation of the committee.

Ms. Bjerke is a current Kindergarten teacher at Lincoln Primary School.

# SUMMER SCHOLARSHIP

## ELEMENTARY AGE CHILDREN

Onetime scholarships are available to families to help pay for the cost of summer care.

- children entering kindergarten through 5th grade ●
- Parent/guardian must be employed ●
- No income guidelines ●

*exception: children receiving the best beginnings scholarship are not eligible*

Complete the application by scanning the code below or visiting [bit.ly/summers22](https://bit.ly/summers22). Be prepared with documentation of summer care (e.g. enrollment form, signed letter from nanny, etc.) Applications are accepted May 20th-June 3rd.

**UP TO \$2,500 PER CHILD**



SCAN TO APPLY



FOR MORE  
INFORMATION CONTACT BUTTE 4-C's AT  
(406) 723-4019 OR BUTTE4CS@GMAIL.COM

**BUTTE 4-C's**  
Illustrated with seven colorful hands (purple, red, yellow, blue, light blue, pink, green) below the text.

**MONTANA  
DPHHS**

*Healthy People. Healthy Communities.*  
Department of Public Health & Human Services

Name: \_\_\_\_\_ D.O.B.: \_\_\_\_\_

Allergy to: \_\_\_\_\_

 Weight: \_\_\_\_\_ lbs. Asthma: ☐ Yes (higher risk for a severe reaction) ☐ No

**PLACE  
PICTURE  
HERE**

**NOTE: Do not depend on antihistamines or inhalers (bronchodilators) to treat a severe reaction. USE EPINEPHRINE.**

**Extremely reactive to the following foods:** \_\_\_\_\_

THEREFORE:

☐ If checked, give epinephrine immediately for ANY symptoms if the allergen was likely eaten.

☐ If checked, give epinephrine immediately if the allergen was definitely eaten, even if no symptoms are noted.

FOR ANY OF THE FOLLOWING:  
**SEVERE SYMPTOMS**



**LUNG**

Short of breath,  
wheezing,  
repetitive cough



**HEART**

Pale, blue,  
faint, weak  
pulse, dizzy



**THROAT**

Tight, hoarse,  
trouble  
breathing/  
swallowing



**MOUTH**

Significant  
swelling of the  
tongue and/or lips



**SKIN**

Many hives over  
body, widespread  
redness



**GUT**

Repetitive  
vomiting, severe  
diarrhea



**OTHER**

Feeling  
something bad is  
about to happen,  
anxiety, confusion

**OR A  
COMBINATION**  
of symptoms  
from different  
body areas.



1. **INJECT EPINEPHRINE IMMEDIATELY.**
2. **Call 911.** Tell them the child is having anaphylaxis and may need epinephrine when they arrive.
  - Consider giving additional medications following epinephrine:
    - » Antihistamine
    - » Inhaler (bronchodilator) if wheezing
  - Lay the person flat, raise legs and keep warm. If breathing is difficult or they are vomiting, let them sit up or lie on their side.
  - If symptoms do not improve, or symptoms return, more doses of epinephrine can be given about 5 minutes or more after the last dose.
  - Alert emergency contacts.
  - Transport them to ER even if symptoms resolve. Person should remain in ER for at least 4 hours because symptoms may return.

## MILD SYMPTOMS



**NOSE**

Itchy/runny  
nose,  
sneezing



**MOUTH**

Itchy mouth



**SKIN**

A few hives,  
mild itch



**GUT**

Mild nausea/  
discomfort

FOR **MILD SYMPTOMS FROM MORE THAN ONE  
SYSTEM AREA**, GIVE EPINEPHRINE.

FOR **MILD SYMPTOMS FROM A SINGLE SYSTEM  
AREA**, FOLLOW THE DIRECTIONS BELOW:

1. Antihistamines may be given, if ordered by a healthcare provider.
2. Stay with the person; alert emergency contacts.
3. Watch closely for changes. If symptoms worsen, give epinephrine.

## MEDICATIONS/DOSES

Epinephrine Brand: \_\_\_\_\_

Epinephrine Dose: ☐ 0.15 mg IM ☐ 0.3 mg IM

Antihistamine Brand or Generic: \_\_\_\_\_

Antihistamine Dose: \_\_\_\_\_

Other (e.g., inhaler-bronchodilator if wheezing): \_\_\_\_\_

PARENT/GUARDIAN AUTHORIZATION SIGNATURE

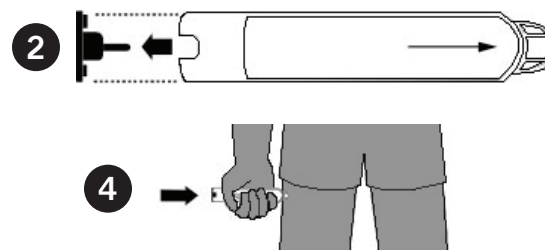
DATE

PHYSICIAN/HCP AUTHORIZATION SIGNATURE

DATE

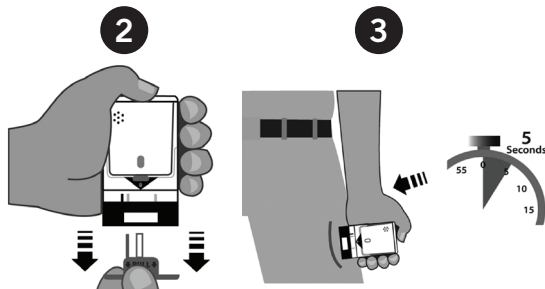
## EPIPEN® (EPINEPHRINE) AUTO-INJECTOR DIRECTIONS

1. Remove the EpiPen Auto-Injector from the plastic carrying case.
2. Pull off the blue safety release cap.
3. Swing and firmly push orange tip against mid-outer thigh.
4. Hold for approximately 10 seconds.
5. Remove and massage the area for 10 seconds.



## AUVI-Q™ (EPINEPHRINE INJECTION, USP) DIRECTIONS

1. Remove the outer case of Auvi-Q. This will automatically activate the voice instructions.
2. Pull off red safety guard.
3. Place black end against mid-outer thigh.
4. Press firmly and hold for 5 seconds.
5. Remove from thigh.



## ADRENALCLICK®/ADRENALCLICK® GENERIC DIRECTIONS

1. Remove the outer case.
2. Remove grey caps labeled "1" and "2".
3. Place red rounded tip against mid-outer thigh.
4. Press down hard until needle penetrates.
5. Hold for 10 seconds. Remove from thigh.



## OTHER DIRECTIONS/INFORMATION (may self-carry epinephrine, may self-administer epinephrine, etc.):

Treat the person before calling emergency contacts. The first signs of a reaction can be mild, but symptoms can get worse quickly.

### EMERGENCY CONTACTS — CALL 911

RESCUE SQUAD: \_\_\_\_\_

DOCTOR: \_\_\_\_\_ PHONE: \_\_\_\_\_

PARENT/GUARDIAN: \_\_\_\_\_ PHONE: \_\_\_\_\_

### OTHER EMERGENCY CONTACTS

NAME/RELATIONSHIP: \_\_\_\_\_

PHONE: \_\_\_\_\_

NAME/RELATIONSHIP: \_\_\_\_\_

PHONE: \_\_\_\_\_