



PERKINS MEASURES

2021

Special Populations

HELP

*Indicators 2S1, 2S2 and 2S3 are blank due to incomplete data. There was no state testing in 2020

Special Populations

Homeless

State

IL

Region EFE

All

District

All

School

Staunton High School

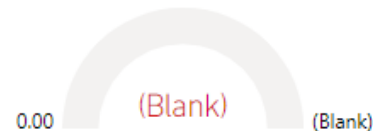
1S1: Four-Year Graduation Rate



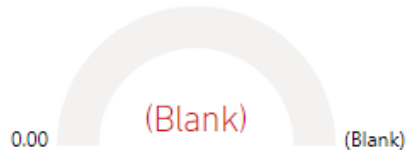
1S2: Extended Graduation Rate



2S1: Academic Proficiency in Reading*



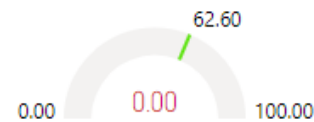
2S2: Academic Proficiency in Mathematics*



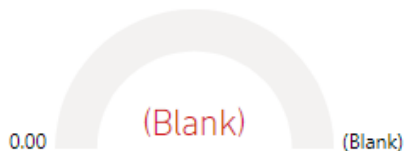
2S3: Academic Proficiency in Science*



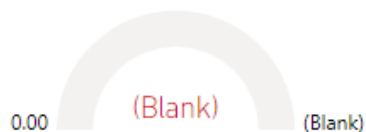
3S1: Post-Program Placement



4S1: Nontraditional Program



5S2: Program Quality Attained Postsecondary Credits



5S3: Program Quality – Work-Based Learning

