

Durham Unified School District  
Regular Meeting of the Board of Trustees  
Wednesday, June 22, 2016  
6:00 p.m.  
(RETURN TO OPEN SESSION AT 7:00 P.M.)  
District Boardroom

AGENDA

**A. CALL TO ORDER**

**B. MOVE TO CLOSED SESSION**

**C. CLOSED SESSION**

1. Conference with Labor Negotiators Agency designated representatives:  
Board President Ed McLaughlin, Unrepresented Employee(s): Superintendent  
(Government Code 54957.6)
2. Conference with Labor Negotiators Agency designated representatives: Superintendent Len Foreman  
Employee Organizations: Administrative, CTA, CSEA, and Classified Confidential  
(Government Code 54957.6)
3. Public Employee Discipline / Dismissal / Release / Complaint  
(Government Code 54957)
4. Public Employee Performance Evaluation: Superintendent  
(Government Code 54957)

**D. RETURN TO OPEN SESSION**

**E. PLEDGE OF ALLEGIANCE**

**F. REPORT OF ACTION TAKEN IN CLOSED SESSION**

**G. ORDER OF AGENDA**

**H. ITEMS FROM THE PUBLIC**

The law allows the public to address the governing board on any school district matter, whether or not it is on the agenda, but the law prohibits action or discussion by the Board on non-agenda items. *A person wishing to be heard by the Board shall first be recognized by the president and shall then proceed to comment as briefly as the subject permits. Individual speakers shall be allowed three minutes to address the Board on each agenda or non-agenda item. The Board shall limit the total time for public input on each item to 20 minutes. With Board consent, the president may increase or decrease the time allowed for public presentation, depending on the topic and the number of persons wishing to be heard. The president may take a poll of speakers for or against a particular issue and may ask that additional persons speak only if they have something new to add.* (BB 9323)

**I. ITEMS FROM THE BOARD**

**J. CONSENT AGENDA**

1. Employment

Classified  
Custodian I-PM (5A): Randall Payton

2. Certificated Retirement

Position	Name	Effective Date
Certificated Teacher	Bill Askea	June 6, 2016

**K. DISCUSSION/ACTION ITEMS:**

**Page #**

- |  |       |
|--|-------|
| 1. Approve (LCAP) Local Control Accountability Plan  | *     |
| 2. Adoption of 2016-2017 Original Budget   | *     |
| 3. Approve reserve level requirements per Ed Code 42127  |       |
| 4. Approve increase in Cafeteria prices for 2016-2017  | 1--3  |
| 5. Approve Consultant Agreement between DUSD and James Whitlock for Collective Bargaining Support Services | 4     |
| 6. Approve DRAFT Bell Schedule for Durham Intermediate School and Durham High School 2016-2017             | 5     |
| 7. Approve (SELPA) Special Education Local Plan Area Revision  | 6-11  |
| 8. Approve .50 FTE Durham Intermediate School Counselor  | 12    |
| 9. Approve Personal Electronic Device (PED) Policy for Durham Intermediate School                          | 13-14 |
| 10. Approve Video Surveillance For Schools Grant Application   | 15-23 |
| 11. Approve Agricultural Career Technical Education Incentive Grant 2016-17 Application and Waiver Request | 24-27 |

**L. RETURN TO CLOSED SESSION**

**M. CLOSED SESSION**

**N. RETURN TO OPEN SESSION**

**O. REPORT OF ACTION TAKEN IN CLOSED SESSION**

**P. NEXT BOARD MEETING DATE: August 17, 2016**

**Q. ADJOURNMENT**

Notes:

\*Agenda item documents are available for public inspection during regular business hours at the District Office.

\*\*Handout will be provided at the board meeting.

If you require special accommodations to participate in the meeting, please advise Becky Gordon, District Secretary, 48 hours in advance at 895-4675 x227.

# DURHAM UNIFIED SCHOOL DISTRICT

**Board Meeting Date: June 16, 2016**

**SUBJECT:** Increase Cafeteria Prices for 2016-2017

**PREPARER:** Ron Sherrod

**RECOMMENDATION**

Approve

Do Not Approve

Accept

Discuss

Information Only

**BACKGROUND:**

In order to meet the Federal and State requirements for nutrition reimbursements we are proposing an increase in the cafeteria meal prices. This will allow the District Cafeteria Program to remain its position slightly above the federally required Paid Lunch Equity minimum average of \$2.74.

The increases are as follows:

Durham Elementary School lunch increase from \$2.60 to \$2.65

Durham Intermediate School lunch increase from \$3.00 to \$3.05

Durham High School lunch increase from \$3.00 to \$3.05

[Go to instructions](#)

SFA NAME:	Durham Unified School District
-----------	--------------------------------

### SY2016-2017 Weighted Average Pricing Report

*This report assists in tracking the pricing requirements and amounts carried forward for SY 2016-2017. Information on this report is used to determine the SY 2016-2017 weighted average price requirements.*

*Please print and keep in records.*

*NOTE: If information is changed in the tool, the report contents will change.*

#### Section 1: SY2016-2017 Weighted Average Paid Price Requirements

A. SY 2016-17 Weighted Average Price Requirement*: <small>*This price will be entered into the SY 2017-2018 tool to determine the SY2017-2018 weighted average price requirements</small>	<b>\$2.78</b>
B. Optional Price ROUNDED DOWN to nearest 5 cents:	<b>\$2.75</b>

#### Section 2: Amounts Carried Forward to SY 2017-2018

Select the SY 2016-2017 method used to ensure sufficient funds are provided for PAID Lunches

#### Average Weighted Price Adjustments

A. Remaining increase carried forward to SY 2017-18:	<b>\$0.00</b>
B. Remaining credit carried forward to SY 2017-18:	<b>\$0.00</b>
Enter in the new average weighted price for SY 2016-17:	<b>\$2.79</b>

#### Non-Federal Source Contributions

C. Remaining Annual Non-Federal Source Contribution carried forward to SY 2017-18:	<b>N/A</b>
D. Remaining Credit carried forward to SY 2017-18:	<b>N/A</b>
Enter the amount of Non-Federal Source contributions for SY 2016-17:	<b>59977</b>

Enter Sources of Non-Federal Funds Contributed:

General Fund

#### Split Calculations

E. Remaining Annual Non-Federal Source Contribution carried forward to SY 2017-18:	<b>N/A</b>
F. Remaining Credit carried forward to SY 2017-18:	<b>N/A</b>
Enter the amount of Non-Federal Source contributions for SY 2016-17:	<b>59977</b>
Enter the new average weighted price for SY 2016-17:	<b>2.79</b>

SFA NAME:	
-----------	--

## SY 2016-17 Price Adjustment Calculator

[Go to Instructions](#)

SY 2016-17 Weighted Average Price Requirement	
Requirement price to the nearest cent	Optional price requirement <b>ROUNDED DOWN</b> to nearest 5 cent
\$ 2.78	\$ 2.75
<i>Note: Above prices are based on adjusting SY 2015-2016 price requirement by the 2% rate increase plus the Consumer Price Index (2.97%)</i>	

SY 2015-16 Weighted Average Price Calculator			
Enter the paid prices and number of paid lunches sold at each price for October 2015.			
Monthly # of Paid Lunches	Paid Lunch Price	Monthly Revenue	SY 2015-16 Weighted Average Price
1.	2,036	\$ 2.60	\$ 5,293.60
2.	850	\$ 3.00	\$ 2,550.00
3.	252	\$ 3.00	\$ 756.00
4.		\$ -	
5.		\$ -	
6.		\$ -	
7.		\$ -	
8.		\$ -	
9.		\$ -	
10.		\$ -	
<b>TOTAL</b>	<b>3,138</b>	<b>\$ 8,599.60</b>	<b>\$ 2.74</b>
<i>Note: SY 2015-16 Weighted Average Price equal to or above \$2.78 are compliant for SY 2016-17. \$2.78 is the difference between the Free and Paid reimbursement rates for SY 2015-16.</i>			

<b>Total Price Increase for SY 2016-17</b>
\$ 0.01

<b>Required price increase for SY 2016-17 (with 10 cent cap)</b>
\$ 2.75

<b>Remaining increase carried forward to SY 2017-18</b>
\$ -

<b>Remaining credit carried forward to SY 2017-18</b>
\$ -

[Go to SY2016-2017 Report](#)

## Step 3 (Optional)

Pricing Estimation Calculator				
Below is a tool allowing users to manipulate prices to achieve the required new weighted average price.				
	Monthly # of Paid Lunches	Paid Lunch Price	Monthly Revenue	Weighted Average Price
1.	2,036	\$ 2.65	\$ 5,395.40	
2.	850	\$ 3.05	\$ 2,592.50	
3.	252	\$ 3.05	\$ 768.60	
4.		\$ -		
5.		\$ -		
6.		\$ -		
7.		\$ -		
8.		\$ -		
9.		\$ -		
10.		\$ -		
<b>TOTAL</b>	<b>3,138</b>		<b>\$ 8,756.50</b>	<b>\$ 2.79</b>

Note: This tool is created to allow the user to only enter the number of paid lunches and the related prices. If any other parts of the tool are modified, the user runs the risk of calculating an incorrect new average price. Users should not modify the tool's current functionality. November 2015

4

**CONSULTANT AGREEMENT BETWEEN THE DURHAM UNIFIED SCHOOL DISTRICT AND JAMES C. WHITLOCK, dba  
COLLECTIVE BARGAINING SUPPORT SERVICES**

---

This Agreement is entered into effective June 16, 2016 by and between Durham Unified School District ("District") and James Whitlock dba Collective Bargaining Support Services ("Consultant").

For mutual consideration set forth below, the parties agree as follows:

1. Consultant shall render services related to emergency preparations, personnel and human resources to the District.
2. District agrees that Consultant possesses special expertise and is qualified to render the consultant services specified herein.
3. Consultant shall be compensated at the rate of one hundred fifty-five dollars (\$155) per hour for all consultant services rendered on behalf of District provided, however, Consultant shall charge not more than one (1) hour for travel time to the District and not more than one (1) hour travel from the District to the Consultant's residence.
4. Consultant shall be reimbursed for all actual and necessary expenses incurred in connection with Consultant's services to District. Such expenses shall include travel, mileage, lodging, meals and other out-of-pocket expenses reimbursable under District's policies and procedures.
5. Consultant shall submit to District monthly invoices for services rendered and expenses incurred. Consultant shall provide receipts for expenses incurred in the same manner as required by District policies and procedures.
6. It is understood and agreed that Consultant, while engaged in carrying out and complying with any of the terms of this agreement, is an independent contractor and is not an employee of District.
7. Consultant shall provide District with Consultant's tax identification number for purpose of issuing any tax reporting document required by law.
8. Either Consultant or District may, with or without cause, terminate this Agreement at any time upon written notice to the other party. It is provided, however, Consultant shall be entitled to payment for services and reimbursement for expenses incurred prior to any termination of this Agreement.
9. The parties agree that all disputes which arise between Consultant and District, whether financial or otherwise, shall be resolved by binding arbitration. The parties agree to waive their right to a jury trial and to an appeal.

IN WITNESS WHEREOF, Consultant and District execute this Agreement effective on the day and year specified above.

ON BEHALF OF CONSULTANT:

ON BEHALF OF DISTRICT:

*James C. Whitlock*

James C. Whitlock  
SS# 461 72 5225

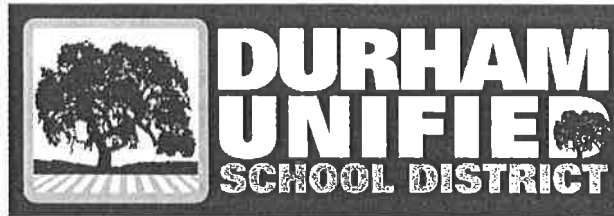
\_\_\_\_\_

# DHS / DIS

## BELL SCHEDULE

### 2016-2017

0	Period	7:45 – 8:37	(52)
1	Period	8:42 – 9:37	(55)
<b>DHS/DIS Break</b>		<b>9:37 – 9:47</b>	<b>(10)</b>
2	Period	9:52 – 10:44	(52)
3	Period	10:49 – 11:41	(52)
<b>DIS Lunch</b>		<b>11:41 – 12:21</b>	<b>(40)</b>
	DIS 4 Period	12:26 – 1:18	(52)
	DHS 4 Period	11:46 – 12:38	(52)
<b>DHS Lunch</b>		<b>12:38 – 1:18</b>	<b>(40)</b>
5	Period	1:23 – 2:15	(52)
6	Period	2:20 – 3:12	(52)



Len Foreman, Superintendent  
[lforeman@durhamunified.org](mailto:lforeman@durhamunified.org)

California Department of Education  
 Form SED-LP-5 (Revised 3/2016)

Special Education Division

**Special Education Local Plan Area  
 Local Educational Agency Assurances**

**1. Free appropriate public education (20 United States Code [U.S.C.] § 1412 [a][1])**

It shall be the policy of this local educational agency (LEA) that a free appropriate public education is available to all children with disabilities residing in the LEA between the ages of 3 and 21, inclusive, including children with disabilities who have been suspended or expelled from school.

**2. Full educational opportunity (20 U.S.C. § 1412 [a][2])**

It shall be the policy of this LEA that all children with disabilities have access to educational programs, non-academic programs, and services available to non-disabled children.

**3. Child find (20 U.S.C. § 1412 [a][3])**

It shall be the policy of this LEA that all children with disabilities residing in the State, including children with disabilities who are homeless or are wards of the State and children with disabilities attending private schools, regardless of the severity of their disabilities, and who are in need of special education and related services, are identified, located, and evaluated. A practical method has been developed and implemented to determine which children with disabilities are currently receiving needed special education and related services.

**4. Individualized education program (IEP) and individualized family service plan (IFSP) (20 U.S.C. § 1412 [a][4])**

It shall be the policy of this LEA that an IEP, or an IFSP that meets the requirements of 20 U.S.C. § 1436 (d), is developed, implemented, reviewed, and revised for each child with a disability who requires special education and related services in accordance with 20 U.S.C. § 1414 (d). It shall be the policy of this LEA that a review of an IEP will be conducted on at least an annual basis to review a student's progress and make appropriate revisions.



**5. Least restrictive environment (20 U.S.C. § 1412 [a][5])**

It shall be the policy of this LEA that to the maximum extent appropriate, children with disabilities, including children in public or private institutions or other care facilities, are educated with children who are not disabled. Special classes, separate schooling, or other removal of children with disabilities from the general educational environment, occurs only when the nature or severity of the disability of a child is such that education in regular classes with the use of supplementary aids and services cannot be achieved satisfactorily.

**6. Procedural safeguards (20 U.S.C. § 1412 [a][6])**

It shall be the policy of this LEA that children with disabilities and their parents shall be afforded all procedural safeguards according to state and federal laws and regulations.

**7. Evaluation (20 U.S.C. § 1412 [a][7])**

It shall be the policy of this LEA that a reassessment of a child with a disability shall be conducted at least once every three years or more frequently, if appropriate.

**8. Confidentiality (20 U.S.C. § 1412 [a][8])**

It shall be the policy of this LEA that the confidentiality of personally identifiable data, information, and records maintained by the LEA relating to children with disabilities and their parents and families shall be protected pursuant to the Family Educational Rights and Privacy Act.

**9. Part C to part B transition (20 U.S.C. § 1412 [a][9])**

It shall be the policy of this LEA that children participating in early intervention programs (Individuals with Disabilities Education Act [IDEA], Part C), and who will participate in preschool programs, experience a smooth and effective transition to those preschool programs in a manner consistent with 20 U.S.C. § 1437 (a)(9). The transition process shall begin prior to the child's third birthday.

**10. Private schools (20 U.S.C. § 1412 [a][10])**

It shall be the policy of this LEA to assure that children with disabilities voluntarily enrolled by their parents in private schools shall receive appropriate special education and related services pursuant to LEA coordinated procedures. The proportionate amount of federal funds will be allocated for the purpose of providing special education services to children with disabilities voluntarily enrolled in private school by their parents.

**11. Local compliance assurances (20 U.S.C. § 1412 [a][11])**

It shall be the policy of this LEA that the Local Plan shall be adopted by the appropriate local board(s) (district/county) and is the basis for the operation and administration of special education programs, and that the agency(ies) herein represented will meet all applicable

requirements of state and federal laws and regulations, including compliance with the IDEA; the Federal Rehabilitation Act of 1973, Section 504 of Public Law; and the provisions of the California Education Code, Part 30.

**12. Interagency (20 U.S.C. § 1412 [a][12])**

It shall be the policy of this LEA that interagency agreements or other mechanisms for interagency coordination are in effect to ensure services required for free appropriate public education are provided, including the continuation of services during an interagency dispute resolution process.

**13. Governance (20 U.S.C. § 1412 [a][13])**

It shall be the policy of this LEA to support and comply with the provisions of the governance bodies and any necessary administrative support to implement the Local Plan. A final determination that an LEA is not eligible for assistance under this part will not be made without first affording that LEA with reasonable notice and an opportunity for a hearing through the State Educational Agency.

**14. Personnel qualifications (20 U.S.C. § 1412 [a][14])**

It shall be the policy of this LEA to ensure that personnel providing special education related services meet the highly qualified requirements as defined under federal law, and that those personnel have the content knowledge and skills to serve children with disabilities. This policy shall not be construed to create a right of action on behalf of an individual student for the failure of a particular LEA staff person to be highly qualified or to prevent a parent from filing a State complaint with the California Department of Education (CDE) about staff qualifications.

**15. Performance goals and indicators (20 U.S.C. § 1412 [a][15])**

It shall be the policy of this LEA to comply with the requirements of the performance goals and indicators developed by the CDE and provide data as required by the CDE.

**16. Participation in assessments (20 U.S.C. § 1412 [a][16])**

It shall be the policy of this LEA that all students with disabilities shall participate in state and district-wide assessment programs. The IEP team determines how a student will access assessments with or without accommodations, or access alternate assessments, consistent with state standards governing such determinations.

**17. Supplementation of state, local, and federal funds (20 U.S.C. § 1412 [a][17])**

It shall be the policy of this LEA to provide assurances that funds received from Part B of the IDEA will be expended in accordance with the applicable provisions of the IDEA, and will be used to supplement and not to supplant state, local, and other federal funds.

**18. Maintenance of effort (20 U.S.C. § 1412 [a][18])**

It shall be the policy of this LEA that federal funds will not be used to reduce the level of local funds and/or combined level of local and state funds expended for the education of children with disabilities except as provided in federal laws and regulations.

**19. Public participation (20 U.S.C. § 1412 [a][19])**

It shall be the policy of this LEA that public hearings, adequate notice of the hearings, and an opportunity for comments are available to the general public, including individuals with disabilities and parents of children with disabilities, and are held prior to the adoption of any policies and/or regulations needed to comply with Part B of the IDEA.

**20. Rule of construction (20 U.S.C. § 1412 [a][20])**

(Federal requirement for state educational agency only)

**21. State advisory panel (20 U.S.C. § 1412 [a][21])**

(Federal requirement for state educational agency only)

**22. Suspension and expulsion (20 U.S.C. § 1412 [a][22])**

The LEA assures that data on suspension and expulsion rates will be provided in a manner prescribed by the CDE. When indicated by data analysis, the LEA further assures that policies, procedures, and practices related to the development and implementation of the IEPs will be revised.

**23. Access to instructional materials (20 U.S.C. § 1412 [a][23])**

It shall be the policy of this LEA to provide instructional materials to blind students or other students with print disabilities in a timely manner according to the state-adopted National Instructional Materials Accessibility Standard.

**24. Overidentification and disproportionality (20 U.S.C. § 1412 [a][24])**

It shall be the policy of this LEA to prevent the inappropriate overidentification or disproportionate representation by race and ethnicity of children as children with disabilities.

**25. Prohibition on mandatory medicine (20 U.S.C. § 1412 [a][25])**

It shall be the policy of this LEA to prohibit school personnel from requiring a student to obtain a prescription for a substance covered by the Controlled Substances Act as a condition of attending school or receiving a special education assessment and/or services.

**26. Distribution of funds (20 U.S.C. § 1411 [e] and [f][1–3])**

(Federal requirement for state educational agency only)

**27. Data (20 U.S.C. § 1418 [a–d])**

It shall be the policy of this LEA to provide data or information to the CDE that may be required by regulations.

**28. Charter schools (California Education Code 56207.5 [a–c])**

It shall be the policy of this LEA that a request by a charter school to participate as an LEA in a special education local plan area (SELPA) may not be treated differently from a similar request made by a school district.

In accordance with federal and state laws and regulations, the Durham Unified School District certifies that this plan has been adopted by the appropriate local board(s) (district/county) and is the basis for the operation and administration of special education programs, and that the agency herein represented will meet all applicable requirements of state and federal laws, regulations, and state policies and procedures, including compliance with the Individuals with Disabilities Education Act, 20 U.S.C. 1400 et seq., and implementing regulations under 34 Code of Federal Regulations, Parts 300 and 303, 29 U.S.C. 794, 705 (20), 794- 794b, the Federal Rehabilitation Act of 1973, as amended, and the provisions of the California Education Code, Part 30 and Chapter 3, Division 1 of Title V of the California Code of Regulations.

Be it further resolved, the LEA superintendent shall administer the local implementation of procedures, in accordance with state and federal laws, rules, and regulations, which will ensure full compliance.

Furthermore, the LEA superintendent ensures that policies and procedures covered by this assurance statement are on file at the LEA and the SELPA offices, and are available to any interested party.

Adopted this \_\_\_\_\_ day of \_\_\_\_\_, 20\_\_\_\_\_.

Yeas: \_\_\_\_\_ Nays: \_\_\_\_\_

Signed: \_\_\_\_\_, Superintendent

# DURHAM UNIFIED SCHOOL DISTRICT

**Board Meeting Date: June 22, 2016**

<b>SUBJECT:</b> Approve .50 FTE Durham Intermediate Counselor	
<b>PREPARER:</b> Jeff Kuhn	
<b>RECOMMENDATION</b>	<input checked="" type="checkbox"/> Approve <input type="checkbox"/> Do Not Approve <input type="checkbox"/> Accept <input type="checkbox"/> Discuss <input type="checkbox"/> Information Only
<b>BACKGROUND:</b>	
<p>Durham Intermediate School had a counselor during the school year 08/09 and again in 12/13. During the years we had counseling services available to students on a part time basis. Students were counseled in conflict resolution, problem solving, decision making and peer communications in both small group and individual sessions. They received training in peer relationships and effective social skills to help guide them to understand themselves and others.</p> <p>Our highly successful academic coaches program also started in 08/09. The counselor took a lead role to implement this strategy of student academic intervention. This program has a profound effect on the number of students that participate in our promotion ceremony.</p> <p>Since not having a counselor on campus there has been an increase in the number of students that are in need of counseling. The incidents of Social Media and Cyber Bullying are at an all time high and students are in need of more direct counseling. Sometimes the safest place for a child is school. I use the Project Wisdom program to share a positive message each morning. However, our students continue to demonstrate a need for greater support.</p> <p>Middle School students are at their most physical and mental transitional time of their lives. Their bodies are growing faster than ever. Their brains and hormones are in overdrive and they are learning at an astonishing rate. They are not only learning the academics we are teaching them, they are learning from their peers. Studies show that this age group moves more to their friends for advice than their parents. We have seen substantial need for support with our students.</p> <p>In district surveys taken for our LCAP counseling support was one recommendation that was repeated. Students, staff and parents made recommendations to provide this service. This information as well as a significant increase in student mental health referrals and hospitalizations caused us to write this service into our LCAP.</p> <p>I ask you to consider approval of hiring a 50% counselor for the students of Durham Intermediate School.</p>	

## Cell Phones and Personal Electronic Device, (PED) Policy

June 22, 2016

DIS encourages *responsible* use of PEDs. Students may use their PEDs at school subject to the following:

- A PED may be used for personal use before or after school hours, respectively, prior to 8:30am and after 3:30pm.
- Students may not text, video, record, or photograph at any time during school hours without specific permission from a teacher or administrator.
- Within the classroom, the teacher's PED policy will be established and posted.
- PED's must remain on silent, out of sight, unless teacher permission has been granted.
- PED's may be used on the school bus at the discretion of the driver or supervising adult.
- Students will use the district Wi-Fi while on DUSD campus.

### Consequences

Each teacher has classroom policies posted. If the policy rules have been broken, students PED may be confiscated and returned at the end of the day. 2<sup>nd</sup> offense will result in detention and a loss of privilege for one week. Further offenses will result in student loss of PED privileges at school for the quarter.

## DIS “Bring Your Own Device” Student Contract

June 22, 2016

*For the voluntary use of privately owned personal computing devices at Durham Intermediate School.*

The following terms and conditions govern a student’s privilege of using a personal electronic devices, PED’s, at Durham Intermediate School.

- Student will conduct their PED usage in compliance with the Acceptable Use Technology policy that is stated in the Student/Parent Handbook.
- The student assumes full responsibility for storage, charging, and maintenance of said PED. The DUSD is not responsible for theft or damage.
- Student agrees to cooperate fully with teachers and administration regarding appropriate use of PED both inside and outside of class.
- Students agree not to cyber-bully staff or students, including taking unlawful photos, video, or audio recording.
- Students may use a PED in class only for educational purposes and with a teacher’s approval.

I \_\_\_\_\_ (student name) have read, understand, and agree to the above terms and conditions.

We, \_\_\_\_\_ and \_\_\_\_\_, the parents, or guardians, of said student also have read and understand the PED policy and code of conduct. We understand that using a PED on campus is a privilege and not a right, and can be revoked at any time.




# DURHAM UNIFIED SCHOOL DISTRICT

**Board Meeting Date: June 22, 2016**

<b>SUBJECT :</b> Approve Video Surveillance for Schools Grant Application	
<b>PREPARER:</b> Terry Bennett	
<b>RECOMMENDATION:</b>	<input checked="" type="checkbox"/> Approve <input type="checkbox"/> Do Not Approve <input type="checkbox"/> Accept <input type="checkbox"/> Discuss <input type="checkbox"/> Information Only
<p><b>BACKGROUND:</b></p> <p>I am seeking approval to apply for and accept the grant to improve the video surveillance system for the district.</p> <p>The grant would cover new IP motion cameras, and one year of seven day cloud storage monitoring system. The district would have to pay the cost of installation.</p> <p>This spring Eagle Eye Networks, Inc. launched a \$1 million grant program for schools. I reached out to this group for more information and to learn about the grant. After one year the district would have the opportunity continue with the seven day cloud storage monitoring system at a per camera rate of either \$10 or \$15 per month. The district is under no obligation to purchase storage and monitoring system, nor would we be required to return the installed cameras.</p> <p>The system allows us to also use our existing cameras if we would like as well.</p> <p>I have included a two page article of the grant launch, as well as a six page "Video Surveillance for Schools" as references.</p>	



## Dean Drako is Launching \$1M in Grants for Emergency Video Monitoring in Schools

 Brent Wistrom  
3/31/16 @5:00am

 367

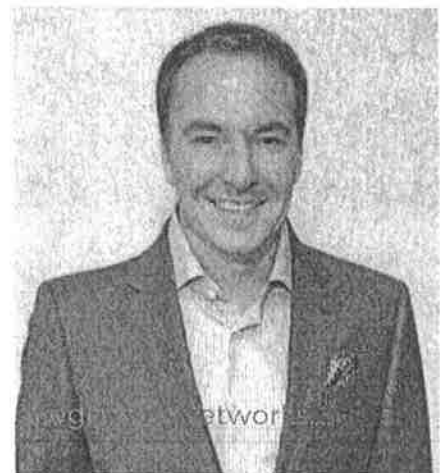
Dean Drako, founder and CEO of the cloud-based video surveillance company, Eagle Eye Networks, is launching a \$1 million grant program for schools to cover the cost of real-time video monitoring technologies.

The move coincides with Eagle Eye Networks' launch of a new product that incorporates the company's cloud-based video monitoring with an app that allows pre-designated emergency responders to monitor video feeds during emergency situations.

With the video feed, which lags only by a second or two, first responders could monitor the location of people trapped when there's a gunman in the building or during a fire or other event. A corresponding map in the app would give them insight to where things are in a building to help them plan an evacuation or other response.

The video feed is encrypted and cloud-based, limiting the potential for anyone to access the video without approval and eliminating the possibility of losing recorded footage because of equipment damage or malfunctions. And the system can connect with almost any kind of existing cameras that facilities already have.

Drako said it's a new take on video surveillance that makes things easier for building administrators and first responders. He said the existing surveillance industry largely operates in silos.



"We're kind of pretty primitive (as an industry)," he said. "There's no standards, there's no kind of openness in the industry. Each one of the vendors of those big DVR-ish systems is kind of a little bit closed up. If you're all working on the same system, you can hook things up. If not, there's no real interoperability."

Eagle Eye's video technologies are already being used by Fairfield Community School District, which has 133 cameras to cover four campuses and roughly 2,100 students, and Brentwood Christian School, which has about 800 students. And the equipment is used to monitor Capital Factory, as well.

*"WE'RE KIND OF PRETTY PRIMITIVE (AS AN INDUSTRY)."*

Under the new grants being provided by Drako, schools can apply to get networking equipment, apps, cloud management services and cameras. After a year, the schools would have the option to start paying for an Eagle Eye Cloud VMS subscription.

Grant applications opened Thursday and the deadline to apply is July 1.

Drako said it's the first system for first responder live video access that doesn't require a fiber connection to 911 centers or other first responder networks and, instead, uses the cloud to provide access to video via smartphone apps or web browsers.

"The first responder can get the live video feeds or historic video so they can get immediate situational awareness either from the officers or first responders on site but they can also be viewing back at headquarters or their response centers and radio or telling the people what they're seeing or what they need to do so that they're not going in blind," Drako said.



Drako, a serial entrepreneur, founded Eagle Eye in 2012 after co-founding Barracuda Networks Inc. and taking it public. Last year, Drako acquired cloud-based access control company Brivo for \$50 million and integrated its control platform with Eagle Eye's video systems. The company is funded primarily by Drako and Michael Dell. Dell provided a "multimillion dollar investment," but Drako declined to provide exact numbers on investments or revenue figures. The company has 40-50 employees now.

Eagle Eye's efforts to operate in schools was influenced by the many recent school shootings, and Drako said he's providing \$1 million in grants because he just feels it's the right thing to do. But he said it's also a proving ground for cloud-based technologies.

"We want to show the advantages of the cloud over traditional systems," he said. "We're still in an uphill battle to convince people that the cloud is obviously better, faster stronger and it should be a no-brainer decision. But people are reticent to do it. It's kind of like they're like 'we put all of our CRM data, we put all of our ERP data, we put all of our IRS data in the cloud, but, man, I don't think we should put our video up there.' So we have a little bit of a perception struggle in our industry that we're trying to overcome."

Eagle Eye commissioned a survey of 1,500 people nationwide to gauge support for the technology in schools. It found that 72 percent of people are in favor of video monitoring in schools. Drilling down, the survey found 64 percent of people favored using the video to identify suspects after crimes occur, and 78 percent favor real-time monitoring during emergency situations.

On camera placement, 76 percent supported cameras at school entrances, 62 percent like the idea of cameras in hallways and as the cameras get more intrusive going into individual classrooms, fewer people supported camera use (36 percent).

Drako said there are dozens of reasons people have for wanting video monitoring.

"A lot of schools have serious vandalism problems... and they want to reduce that," he said. "There are folks who are worried about people showing up at the school who shouldn't be showing up, and they want to be able to go back and see who it was and give photos to police."

+1-512-473-0500 | sales@EagleEyeNetworks.com

[Contact Us](#) [Request Demo](#) [Find a Reseller](#) [Login](#) [English](#)



[Products](#) [Channel Partners](#) [Solutions](#) [Support](#) [Company](#) [News](#)

## Video Surveillance for Schools

**APPLY: DRAKO CLOUD**

### SECURITY GRANT



## The Eagle Eye Security Camera Video Management System

1. Supports safer, more secure campus
2. Remote video viewing with encryption
3. First Responder Real-Time Video Access
4. Flexible Video Storage
5. Simple plug & play school video surveillance
6. High quality, reliable cameras
7. Executive track record



8. \$1,000,000 Drako Cloud Security Grant for Schools



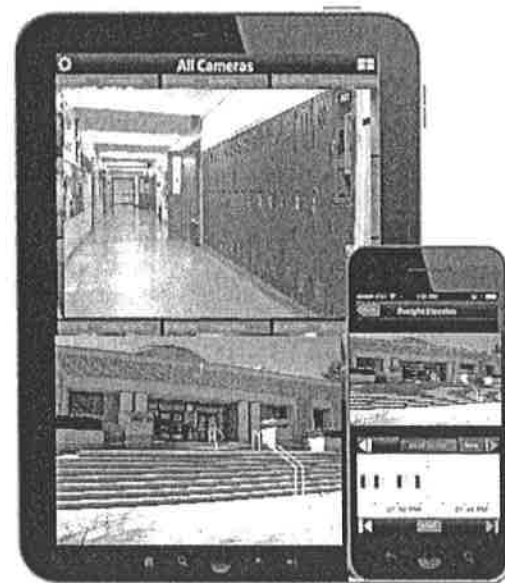
## 1. Support a safer, more secure campus

Eagle Eye Networks school video surveillance system supports your high priority: providing a campus environment that is safe for students, and which also protects school and student property from theft and vandalism.

## 2. Remote video viewing with encryption

Eagle Eye Networks offers 100% mobile and web browser viewing. The cloud-managed school video surveillance system allows your school officials to set permissions for who can view video.

Further, our video is encrypted at every step, ensuring privacy, and better protecting your internal network from breaches.





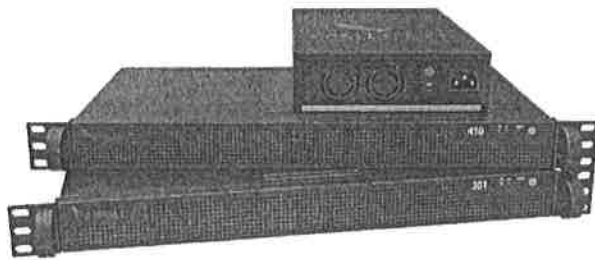
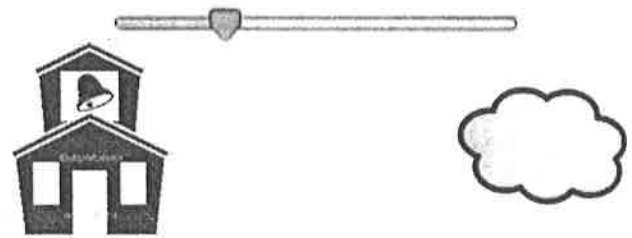
### 3. First Responder Real-Time Video Access

School VMS administrators have the option to pre-designate first responders who can receive immediate real-time security camera access during emergency situations; the cameras are shared only when an authorized user activates first responder access. Users also have the option to highlight specific cameras.

### 4. Flexible Video Storage

Eagle Eye Cloud-Premise Flex Storage™ gives you fully flexibility to click and change how long you keep your recordings, as well as much video is stored on-premise and what video is stored in the cloud. You can record to both locations for reliability and redundancy.

The interface stays the same regardless of where your video is stored.



### 5. Simple Plug & Play School Video Surveillance

The Eagle Eye Cloud Security Camera VMS provides 100% cloud management, and if you want – 100% cloud recording. Architected from the ground up to be all cloud all the time. You can click and add a

camera at any time. Its ready to go when you are. Pay only for what you need. It eliminates all the headaches of traditional systems. No software to buy and install, no license keys, and no OS to maintain.

## 6. High quality, reliable cameras

The Eagle Eye Security Camera VMS will work with a broad array of IP and analog cameras. Optionally, schools can use their existing security cameras, and convert their surveillance system to the Eagle Eye cloud-based VMS.



## 7. Executive Track Record

Our founder and CEO, Dean Drako, was also founder and previously long-term CEO of Barracuda Networks, worldwide network security leader. You can listen to Dean speak on the key elements that Eagle Eye Cloud Security Camera system offers to schools, as well as the findings of a recent survey on video surveillance in schools.

03:23



## 8. \$1,000,000 Drako Cloud Security Grant for Schools

Grant winners will receive a grant for one full year of funding for the cloud-based

Eagle Eye Security Camera Video Management System (VMS) and associated components. The solution includes cloud recording services, centralized management, gateways, cameras, and necessary networking equipment. Encrypted retention of up to 1 year for all the video is available for each camera.

**APPLY: DRAKO CLOUD**

**SECURITY GRANT**



## Case study: Fairfield Community School District

Using Cloud Video Surveillance to Create a Safer Environment on Four School Campuses

*"The cloud-based Eagle Eye Security Camera VMS well exceeded our requirements for access by law enforcement. It will allow us to designate groups of cameras, and then assign granular permissions for accessing the video from specific camera groups. For example, we can designate: "High school entrance and exits", "Junior High Hallways" according to those groups.*

*"Eagle Eye Networks 'First Responder Emergency Video' lets us pre-designate our first responders, such as county sheriff and local police, or even our local fire department, who then download the mobile app so they can to instantly view our schools' video during an emergency.*

*"I like that we have control where we have the option to only allow access if a situation arises, and to keep it private until we turn on the emergency activation."*

*– Andrew England, Technology Director, Fairfield Community School District*

*View detailed Case Study by Fairfield Community School District*

## Brentwood Christian School



*"We chose the Eagle Eye Security Camera VMS to help us provide the safest environment possible for our 800 students in grades Pre K-12 on our 50 acre campus, covering campus entry points as well as our hallways. Their cloud-based surveillance system lets us direct our technology budget towards the classroom, to enhance our students' educational experience, rather than towards building a large technical support infrastructure.*

*"One example of the robustness of Eagle Eye Networks' system is their First Responder Real-time Video Access feature. If we ever have an emergency situation, we can use the Eagle Eye Viewer mobile app or a web browser to give first responder immediate access to our cameras. The First Responders would not need any special equipment to see the video in such an emergency situation."*

*– Wayne Marks, CTO, Brentwood Christian School*

*View detailed Case Study by Brentwood Christian School*

Products  
Eagle Eye Cloud Security  
Camera VMS  
Eagle Eye Video API  
Bridges & CMVRs  
Cloud VMS Architecture  
Subscriptions

Case Study – Stonegate  
POA  
Case Study – Capital  
Factory  
Projects

Reseller Program  
Find a Reseller  
Become a Channel  
Partner  
Support  
Support FAQ  
Surveillance Cameras  
Downloads

Company  
News  
Careers  
Management Team  
Privacy Policy

---

Copyright 2016 Eagle Eye Networks, Inc

English

Support

**DURHAM UNIFIED SCHOOL DISTRICT**  
**Board Meeting Date: June 22, 2016**

SUBJECT : Approve Agricultural Career Technical Education Incentive Grant 2016-17 Application and Waiver Request

PREPARER: Terry Bennett, Ron Sherrod and Tom Boyes

<u>RECOMMENDATION</u> :	<input checked="" type="checkbox"/> Approve	<input type="checkbox"/> Do Not Approve
	<input type="checkbox"/> Accept	<input type="checkbox"/> Discuss
	<input type="checkbox"/> Information Only	

BACKGROUND:

The Agricultural Career Technical Education Incentive Grant has been an ongoing source of funding in support of DHS' Agriculture Program and the Future Farmers of America (FFA). We are requesting \$10,728 in funding which is supplemented by community fundraising activities and donations.

There is a matching requirement associated with this grant for non-salary items of expenditure; however, the match can be waived if meeting the grant's requirements creates a financial hardship for the district. Historically, the district has been granted such a waiver by the California Department of Education and we will apply for the waiver for the 2016-17 school year.

Funding determinations will be communicated around October 13, 2016.

The application and the waiver request is presented for your approval.

California Department of Education  
**AGRICULTURAL CAREER TECHNICAL EDUCATION INCENTIVE GRANT  
 2016-17 APPLICATION FOR FUNDING**

(Due Date: To be received in Regional Supervisor's Office by June 30, 2016)

**DATES OF PROJECT DURATION - JULY 1, 2016, TO JUNE 30, 2017**

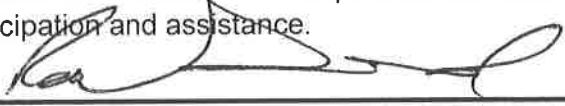
Durham High School

Durham Unified

(School Site)

(District)

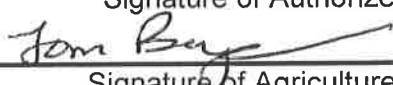
**Certification:** I hereby certify that all applicable state and federal rules and regulations will be observed; that to the best of my knowledge, the information contained in this application is correct and complete; and that the attached assurances are accepted as the basic conditions of the operations in this project/program for local participation and assistance.



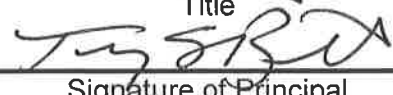
Signature of Authorized Agent

*Business Manager*

Title



Signature of Agriculture Teacher  
Responsible for the Program



Signature of Principal

Contact Phone Number: 530-895-4685 x224

Date of Approval of Local Agency Board:

Funds Requested - Part I

\$4,000.00

Part II

\$728.00

Part III

\$6,000.00

Part IV

\$0.00

Total

\$10,728.00

Number of Different Agriculture Teachers at Site:

1

**PART I - QUALITY CRITERIA 1-9 (REQUIRED) ALLOCATION**

Quality Criteria	Will Meet Criteria	Variance Requested
1. Curriculum and Instruction	x	
2. Leadership and Citizenship Development	x	
3. Practical Application of Occupational Skills	x	
4. Qualified and Competent Personnel	x	
5. Facilities, Equipment, and Materials	x	
6. Community, Business, and Industry Involvement	x	
7. Career Guidance	x	
8. Program Promotion	x	
9. Program Accountability and Planning	x	

**Formal Variance Request must be included if requesting a variance.** A variance is a proposed plan for bringing the program into compliance with required quality criteria. Variances should result in compliance prior to the following year's application. All variances must be approved with the application. Non-compliance with the terms of the approved variance will result in a loss of funds.

PART I - CONTINUED

Departmental Allocation: Meeting the criteria in PART I makes the program eligible for the following amounts based on the number of teachers in the program.

Total Number of Teachers	Amount Eligible	Amount Requested
One Teacher or Less	\$4,000	\$4,000.00
Two Teachers	\$4,500	
Three Teachers or More	\$5,000	

PART II - PROGRAM ENROLLMENT ALLOCATION

Total Number of Students	2015-16 R2 Number	Amount Requested
List Number from R2 Report (\$8/Member)	91	\$728.00

PART III - QUALITY CRITERIA 10-11 (OPTIONAL) ALLOCATION

Schools which qualify for a Departmental Allocation may apply for additional amounts for each specific Quality Criteria (10 and 11) met.

- \* Amounts requested in Quality Criterion 10 will be the indicated amount for that criterion, multiplied by the full-time equivalent (FTE). To count a preparation period, the teacher must be teaching Career Technical Education courses in Agriculture for 50 percent or more of their teaching periods.
- \* Amounts requested in Quality Criterion 11A will be the indicated amount for each teacher who was compensated a minimum of \$2,000 for year-round employment.
- \* Amounts requested in Quality Criterion 11B will be the indicated amount for each teacher who is provided a project supervision period. Project periods will be counted if the teacher has a preparation period as part of the regular teaching day.

Number of FTE Agriculture Teachers at Site: 1

List the Names of the Agriculture Teachers:

- |                     |          |
|---------------------|----------|
| 1. <u>Tom Boyes</u> | 4. _____ |
| 2. _____            | 5. _____ |
| 3. _____            | 6. _____ |

	Number Meeting Criteria	Amount Requested
Criterion 10 - Student/Teacher Ratio	1	\$2,000.00
Criterion 11A - Year-Round Employment	1	\$2,000.00
Criterion 11B - Project Supervision Period	1	\$2,000.00
<b>TOTAL FUNDS REQUESTED PART IV</b>		<b>\$6,000.00</b>

PART IV - QUALITY CRITERION 12 (OPTIONAL) ALLOCATION

Quality Criterion 12 Form is attached and all criteria has been met. If the answer is yes, list \$7,500 (funds requesting) in space to the right.

