
Nixyaawii Community School

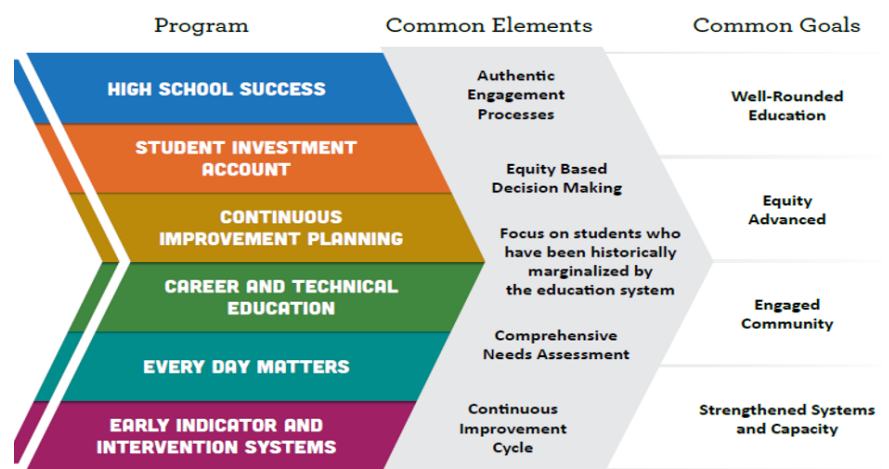
Integrated Plan

What?

This **Integrated Plan** is the product of an extensive, ongoing process that elevates community feedback and a comprehensive needs assessment to guide our implementation of state and federal initiatives and investments of these critical funds over the next four years.

Why?

ODE's **Application Process** was designed in response to requests from educational leaders and state legislators to *combine 6 separate program requirements and common goals into one plan* and create an accountability framework for measuring progress over time.



How?

Our planning team has spent months gathering feedback from our stakeholders (students, families, community and staff) and reviewing data to assess district strengths and challenges, with a focus on ensuring all voices are represented and that plan priorities address the opportunity or achievement gaps that persist in our system. The result of this work is summarized in our **Plan Snapshot**.

Once ODE has approved our plan, they will co-draft longitudinal performance growth targets for our student populations. We will provide quarterly financial and progress reports and an annual performance review. Additionally, we will sustain and grow our engagement efforts to strengthen the implementation of this plan through partnerships.



2023-2027 Integrated Plan Snapshot

Our intended outcomes are:

1. Improve 9th grade on-track percentages.
2. Improve attendance for all students.

These key strategies will help us achieve our intended outcomes:

- Implement an intervention system to address and track deficits related to attendance and achievement.
- Provide well-rounded educational opportunities that support student engagement.
- Prioritize research-based professional development.
- Engage community and agency partners to support student engagement and transportation.
- Explore and research barriers to regular attendance.

Key investments for the upcoming biennium include:

- Hire a Student Success Coordinator/Behavior Support staff member.
- Fund an after school or before school program to support students needing extra help (periods 0 & 8).
- Fund resources, programming, and/or staff to provide targeted interventions for students in credit recovery or who need additional academic support.
- Fund purchase of an intervention system to track attendance and academic achievement.
- Fund events that partner the school and community.
- Develop & fund clubs to engage students and motivate regular attendance.

Total Preliminary Funding = 137k

**Notes: These are pre-existing funds that have been combined into one application cycle. CTE Perkins funds are accessed through the regional CTE Consortium and not included in this total.*

Questions & Comments?

For more information the full plan can be found on our website.

To provide feedback on this plan and/or if you would like to be involved in future stakeholder engagement, please contact: Ryan Heinrich rheinrich@pendletonsd.org or 541-429-7903