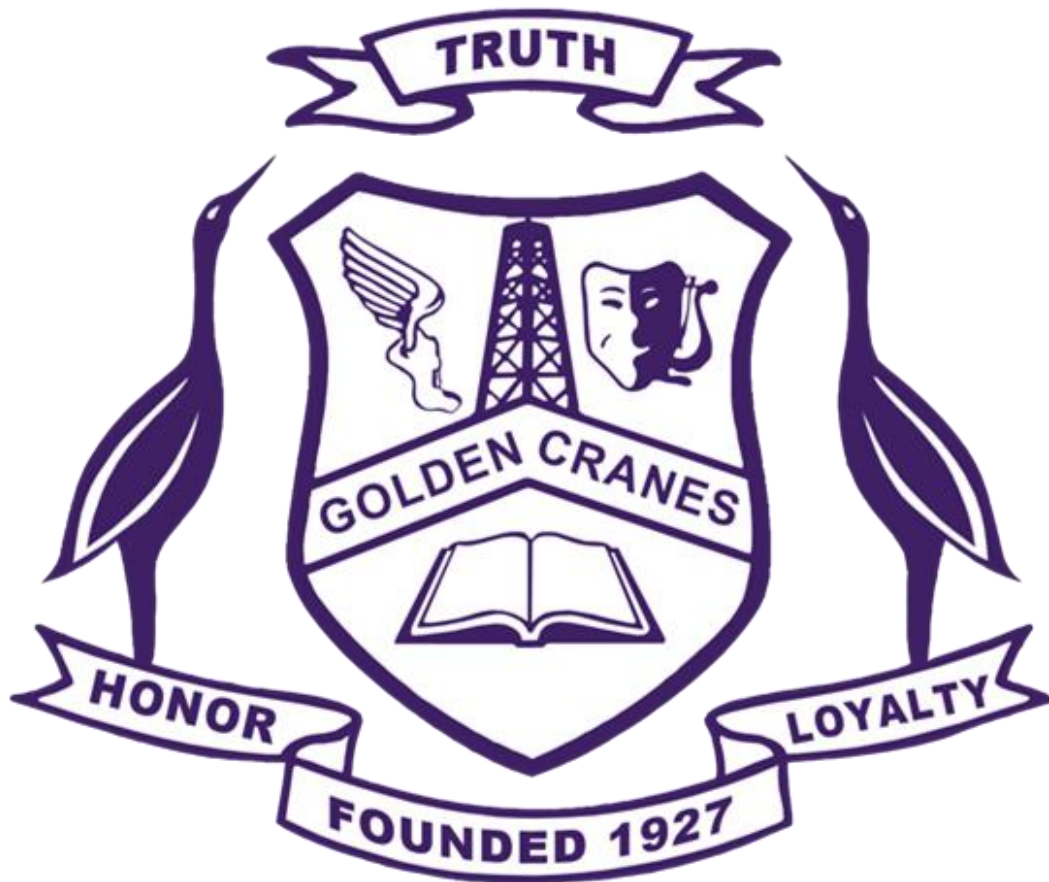


Crane Independent School District

2021-2022

Safe School Re-entry Plan Summary





Please note this is subject to change as we receive updated information and directives from the federal, state, and local governments. Visit our website and follow district social media accounts for the most current information.

*Introduction* - The American Rescue Plan (ARP) Act Statute requires that LEAs develop and make publicly available their plan for the safe return to in-person instruction and continuity of services. a summary of Crane ISD's plan is below.

*Effective Date of Plan* - This plan is effective as of August 19, 2021.

*Public Comment and Stakeholder Input* - This plan was developed in meaningful consultation with stakeholders after soliciting public comment via public board meeting.

*Ongoing Review & Publication of Plan* - The plan was drafted and posted to the website. Every six months, Crane ISD will review the plan in accordance with the latest guidance from the CDC, state and local governments. If revisions are needed to the plan, public input will be solicited and stake holders will be meaningfully consulted. The revised version of the plan will then be posted on the website.

#### Return to In-Person Instruction & Continuity of Services Plan Review

**2021 - 2022 - Year 1** Date of Initial Plan: August 19, 2021

Sixth Month Review Date: February 8, 2022 (with public input)

**2022 - 2023 - Year 2** Sixth Month Review Date: July 25, 2022 (with public input)

End of Grant Period Review Date: January 25, 2023 (with public input)

**2023 - 2024 - Carryover Year** Last required review is September 30, 2023



## **FORWARD ADDRESS TO PARENTS**

As Crane ISD plans for the start of the 2021-22 school year, we are committed to keeping our families, staff, students, and community members safe and informed. While we are in a much better situation than this time last year, we will continue to monitor our local health context with the goal of providing a high-quality educational experience in a safe environment.

Our district web page will be a resource for updates related to the opening of our schools. We will update our page if plans have to be revised. When there are changes we will communicate that out to employees, students, and parents.

After thoroughly reviewing guidance from the Texas Department of State Health Services (DSHS) and the United States Centers for Disease Control and Prevention (CDC), Crane ISD plans to reopen and welcome students back into our classrooms on Thursday, August 19, 2021. We will do so with cleaning and disinfecting protocols in place.

We want to remind our students, staff, and families to be mindful of key preventative measures. The CDC offers some tips on its website that can help avoid the spread of COVID-19 and other illnesses. Please remember that if your child is sick, they should not be at school.

The past year and a half have been a challenging time for the entire Crane ISD community. I want to thank you for your patience and understanding as we have dealt with this unprecedented situation. We look forward to seeing our students again soon.

Sincerely,

Dr. Stephanie Howard

Superintendent, Crane ISD

**KEY CONTACTS:**

Administration Office: (432) 558-1300

Crane Elementary School: (432) 558-1050

Crane Middle School: (432) 558-1040

Crane High School: (432) 558-1030

Cafeteria: (432) 558-1062

Maintenance & Transportation: (432) 558-1064

Special Services: (432) 558-1032

Technology Office: (432) 558-1074



## Staff and Student Safety Protocols

Because COVID-19 can be contracted by people of all ages, it is crucial that Crane ISD take appropriate action to keep its employees and students safe. The following protocols shall be followed by each staff member and student at Crane ISD during the 2021-22 school year.

### Screening

- All staff members will self-screen for the COVID-19 symptoms listed below prior to reporting to campus each day.
- Staff members who experience COVID-19 symptoms or receive a positive, lab-confirmed diagnosis of COVID-19 must report such symptoms or diagnosis to their immediate supervisor and must remain off campus until completing the Isolation Procedures below.
- Additionally, staff members are required to notify the district if they come in “close contact” with an individual who receives a positive, lab-confirmed diagnosis of COVID-19, as defined herein, and if so, must remain off campus until quarantine option has been met.
- Students who have been in close contact and are not required to quarantine based on the guidance in this document and from the CDC and Texas Education Agency, shall report to the nurse’s office each morning and at lunch for a temperature check. (effective 9/7/2021)
- Employees who have been in close contact and are not required to quarantine based on the guidance in this document and from the CDC and Texas Education Agency, shall report to the nurse’s office every other morning and at lunch for a temperature check (the temperature check will be conducted on the day then every other day testing is not conducted). (effective 9/7/2021)
- The following is the recognized list of symptoms that District officials will screen for during daily screenings:

Fever (100° or higher) or chills	Headache
Cough	New loss of taste or smell
Shortness of breath	Sore throat
Difficulty breathing	Congestion or runny nose
Fatigue	Nausea or vomiting
Muscle or body aches	Diarrhea



- Parents must not send a student to District campuses if the student is exhibiting any of the above COVID-19 symptoms or test positive for the virus, as defined herein. Throughout the school day, teachers will monitor students and notify the campus nurse if a student begins exhibiting COVID19 symptoms.
- Any student who exhibits symptoms while at school will be immediately separated from other students until they can be picked up by a parent or guardian.
- If a student or staff member begins showing COVID-19 symptoms while at school, appropriate personnel will promptly clean all areas used or occupied by that individual.
- If a student reports feeling feverish during the school day, they shall immediately receive a temperature check to determine if they are symptomatic for COVID-19.
- Prior to entering a District campus, visitors will be screened to determine if they exhibit COVID-19 symptoms, tested positive for COVID-19, or came within “ [close contact](#)” with an individual who tested positive for COVID-19, as defined herein.

## Isolation Procedures

- The following procedures must be followed by staff members and students before they may return to campus following exposure to the virus.
- For the purposes of this Plan, all individuals who exhibit symptoms of COVID-19 but do not undergo virus testing or medical evaluation are assumed to have COVID-19 and also must observe these procedures.
- If a student or staff member **tests positive** for COVID-19 or exhibits symptoms of COVID-19, that individual may not return to school until the following criteria are satisfied:
  - At least 24 hours have passed since recovery (resolution of fever without the use of fever-reducing medications); AND
  - The individual has improvement in COVID-19 symptoms as listed above; AND
  - **At least 5 days have passed since symptoms first appeared.**
  - **If you have no symptoms or your symptoms are resolving after 5 days, you can leave your house.**
  - **Continue to wear your mask around others for 5 additional days.**
  - ***If you have a fever, continue to stay home until after your fever resolves.***
- Alternatively, if a student or staff member exhibits symptoms of COVID-19 without obtaining a positive, lab-confirmed result, that individual may return back to campus upon satisfaction of the following criteria:
  - The individual obtains a medical professional’s note clearing that individual for return based on an alternative diagnosis.
- Each campus will close off areas that are heavily used by any individual who tests positive for COVID-19 until surfaces in those areas can be disinfected.
- **If You Were Exposed to Someone with COVID-19 (Quarantine)**
  - \* If you have been Boosted OR Completed the primary series of Pfizer or Moderna vaccine within the last 6 months **OR** Completed the primary series of J&J vaccine within the last 2 months:
    - Wear a mask around others for 10 days
    - Test on day 5, if possible
    - ***If you develop symptoms, get tested and stay home.***



- In accordance with **Quarantine** guidelines recommended by the CDC, unvaccinated **staff** members found to be in “close contact” to a person testing positive will be required to quarantine. That individual may not return to school until the following criteria are satisfied:

\*If you are unvaccinated **OR** have Completed the primary series of Pfizer or Moderna vaccine over 6 months ago and are not boosted **OR** Completed the primary series of J&J over 2 months ago and are not boosted.

- Stay home for 5 days. After that continue to wear a mask around others for 5 additional days.
- Test on day 5 if possible.
- *If you develop symptoms, get tested and stay home.*

\* In accordance with quarantine guidelines recommended by the CDC, unvaccinated **students** found to be in “close contact” to a person testing positive may quarantine. The District may require household-based close contact students to stay at home during the stay-at-home period depending on the family’s ability to isolate the individual who has tested positive and other circumstances that would limit contact with the individual who has tested positive. If the District does not require students in this situation to quarantine, they may impose other requirements during the 10-day period such as daily temperature checks and/or daily testing. (Effective 01/03/2022)

- Exceptions to the close contact criteria is the following and DO NOT need to, quarantine :
  - Fully vaccinated **staff** and **students**, who show no symptoms of COVID-19.
  - Individuals who have been previously diagnosed with COVID-19 and recovered within the previous 3 months and remain without symptoms.
  - Staff members who meet the above definition will be required to take a rapid test every other day for 10 days. Updated 8.19.21

## Reporting

- In the event that a student or staff member tests positive for COVID-19, the District shall notify its local health department, in observance of applicable federal, state, and local laws.
- If a staff member is lab-confirmed positive for COVID-19, that individual must report to the immediate supervisor and complete the **Employee Health Reporting Form** within 2h hours.
- If a student is lab-confirmed positive for COVID-19, that individual must report to campus nurse.
- Campuses will notify all teachers, staff, and families of all students in a classroom or extracurricular or after-school program cohort if a test-confirmed COVID-19 case is identified among students, teachers, or staff who participated in those classrooms or cohorts. Updated 8.19.21

## Health and Hygiene Protocols

- Masks may be worn and are recommended for those with compromised immune systems and/or unvaccinated.
- Extracurricular activities will follow UIL guidelines.



- On the first day of school instruction, the District will provide instruction to all students on appropriate hygiene practices and other illness mitigation practices.

## **Safe Instruction**

- Hand sanitizer will be made available at each campus entrance and each classroom.
- Staff members, students, and visitors will be encouraged to sanitize and/or wash hands frequently throughout the day.
- Elementary students will engage in supervised handwashing for at least 20 seconds at least two times per day, in addition to regular hand washing before eating and after using the restroom. The Middle School and High School will encourage students to follow protocol.
- Staff members and students will be encouraged to practice good hygiene relating to virus transmission, including coughing and sneezing into tissues or elbows as well as immediate hand washing or sanitizing.
- District custodial staff will regularly sanitize all areas occupied by students and staff members.
- When feasible and practical, campus windows will be opened in an effort to improve air flow by allowing outside air to circulate in the building.
- Desks will be separated by an appropriate distance when it does not interfere with instruction.
- Seating Charts will be posted for each classroom.

## **Academic Needs of Students**

The District will provide opportunities for acceleration and remote conferencing to meet our students' academic needs.

## **Social and Emotional Needs of Students and Staff**

Recognizing the impact, the past 18 months have had on students and staff, the District will provide counseling to support the students and staff needs.





## **Safe Transportation**

- Students and staff members will be required to use hand sanitizer upon boarding the bus or other district vehicles.
- When feasible and appropriate, bus windows will be opened to allow outside air to circulate in the bus.
- Buses will be thoroughly sanitized after each bus trip, with special focus on “high-touch” areas.
- Seating charts will be maintained and followed on trips.

## **Safe Visits**

Parents and other adults may visit District campuses. Visitors must adhere to the District’s virus transmission prevention and mitigation requirements set forth in this Plan.

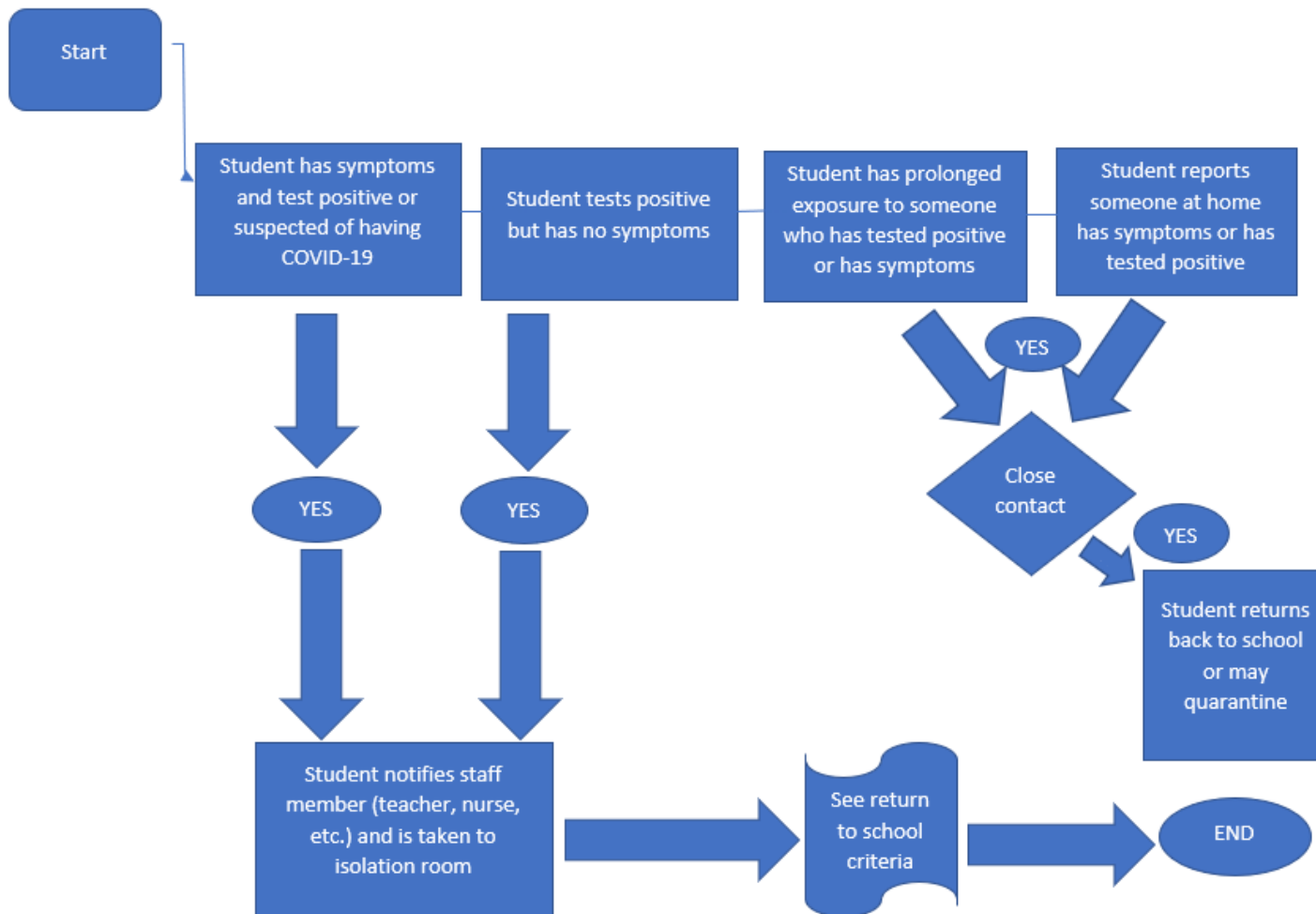
## **Extracurricular Activities**

- Athletic practices, performances, and contests will be conducted according to safety protocols provided by UIL.
- Hand sanitizer and/or handwashing stations will be made available in extracurricular facilities and all equipment will be sanitized on a regular basis.



## CRANE ISD FLOWCHART FOR COVID-19

To be considered exposed to COVID-19, you need to have prolonged close contact with a person who has the virus. Close contact includes living in the same household, caring for a sick person with the virus, being within 6 feet of a sick person with the virus for a cumulative total of 15 minutes or more over a 24-hour period without the use of a face covering, or being in direct contact with secretions from the sick person.





## RETURN TO SCHOOL CRITERIA

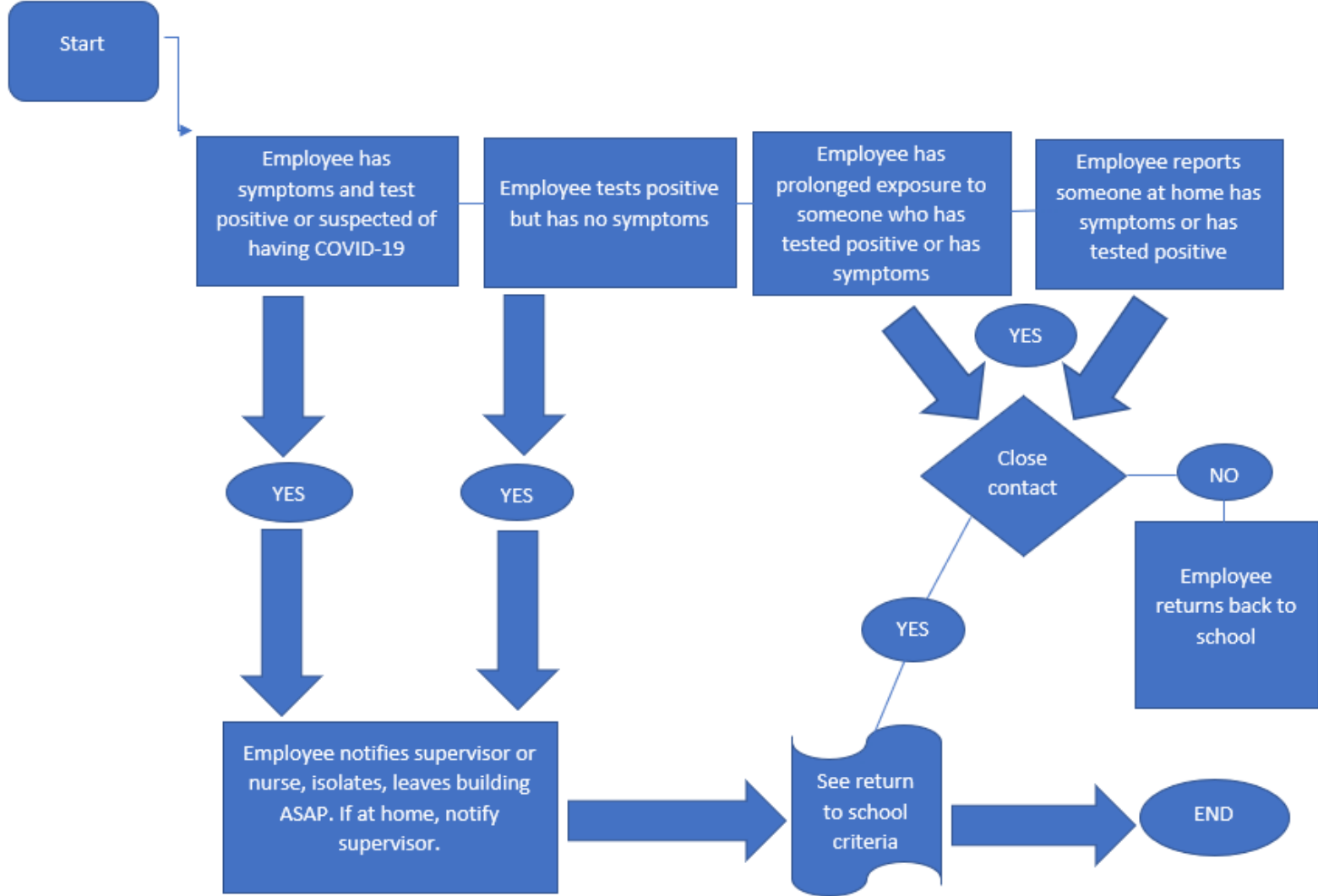
- At least 24 hours have passed since recovery (no fever without the use of fever- reducing medications)
- You have improved respiratory symptoms (cough, shortness of breath, etc.)
- At least **5** days have passed since symptoms first occurred
- "Close contact" includes being directly exposed to infectious secretions (e.g., being coughed on while not wearing a mask) or being within 6 ft. for a cumulative duration of 15 minutes while not wearing a mask

## IMPORTANT INFORMATION

- Determine last date student was physically present at school, the time the employee was within six feet or less of another individual
- Close off areas used by employee
- Disinfecting protocols
- Determine additional closure response and communication if positive

## SYMPTOMS OF COVID-19

- |  |  |
|--|--|
| <ul style="list-style-type: none"><li>• Fever/Chills/Headache</li><li>• Cough</li><li>• Shortness of breath/difficulty breathing</li><li>• Fatigue</li><li>• Muscle/body aches</li></ul> | <ul style="list-style-type: none"><li>• New loss of taste or smell</li><li>• Sore throat</li><li>• Congestion/ runny nose</li><li>• Nausea/vomiting</li><li>• Diarrhea</li></ul> |
|--|--|





## RETURN TO WORK CRITERIA

- At least 24 hours have passed since recovery (no fever without the use of fever- reducing medications)
- You have improved respiratory symptoms (cough, shortness of breath, etc.)
- At least 5 days have passed since symptoms first occurred
- "Close contact" includes being directly exposed to infectious secretions (e.g., being coughed on while not wearing a mask) or being within 6 ft. for a cumulative duration of 15 minutes while not wearing a mask

## IMPORTANT INFORMATION

- Determine last date employee was physically present at school, the time the employee was within six feet or less of another individual
- Close off areas used by employee
- Disinfecting protocols
- Determine additional closure response and communication if positive

## SYMPTOMS OF COVID-19

- |  |  |
|--|--|
| <ul style="list-style-type: none"><li>• Fever/Chills/Headache</li><li>• Cough</li><li>• Shortness of breath/difficulty breathing</li><li>• Fatigue</li><li>• Muscle/body aches</li></ul> | <ul style="list-style-type: none"><li>• New loss of taste or smell</li><li>• Sore throat</li><li>• Congestion/ runny nose</li><li>• Nausea/vomiting</li><li>• Diarrhea</li></ul> |
|--|--|



## **Remote Conferencing**

Crane ISD will provide instruction through remote conferencing for students who are unable to attend school because of a temporary medical condition up to, but does not exceed 20 instructional days over the entirety of the school year.

In addition, one of the following must be met:

- The student's temporary medical condition is documented by a physician licensed to practice in the United States. The documentation must include a statement from the physician that the student is to remain confined to their home or to a hospital.
- The student is being excluded from on campus attendance because of a test result, formal diagnosis, or suspicion of having a communicable condition, as outlined in 25 TAC 97.7, and the conditions for readmission outlined therein have not yet been met.
- The student has been identified as a close contact from COVID-19 either by public health, by the school, or by the parent.

Crane ISD will provide remote conferencing students with a dedicated individual delivering instruction. The instruction will not be delivered by the teacher of record. The instruction may be delivered by a substitute or a paraprofessional.

To participate in remote conferencing:

- the teacher must see the student's face on camera
- be willing to learn in a group setting virtually
- elementary students must be online for 2 hours (State of Texas requirement)
- secondary students must be online for 4 hours (State of Texas requirement)

After a student meets the criteria for remote conferencing, the school will contact the student/parent with a schedule and instructions on how to access synchronous learning.

## **Employee Quarantine/Isolation and Work from Home Protocols**

In the event an employee has to quarantine due to close contact or has tested positive for COVID, employees where their job allows them to work from home will be allowed to work from home with approval from their supervisor. The supervisor will be responsible for ensuring the employee has worked the regular work day. In the event, the employee only works partial days, the employee would submit an Absence from Duty for the parts of days that he/she did not work.

## **Stakeholder/Public Comment**

The District will review and revise this plan on an ongoing basis, at least every six months, from input and comments from stakeholders, the public, and our local agencies. The District welcomes public input by notifying the Superintendent of any concerns regarding this plan.