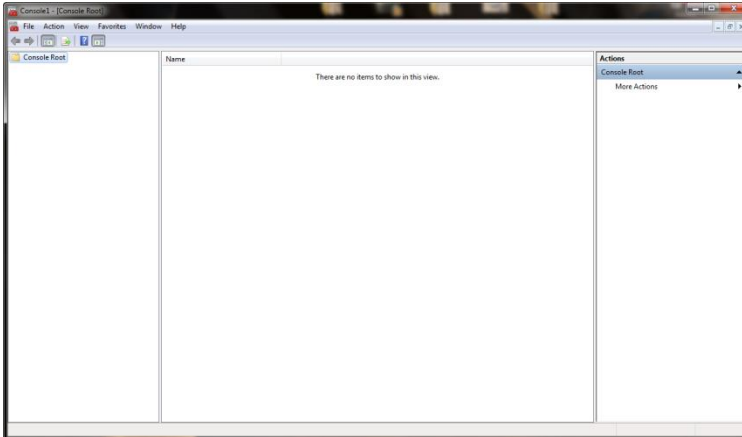


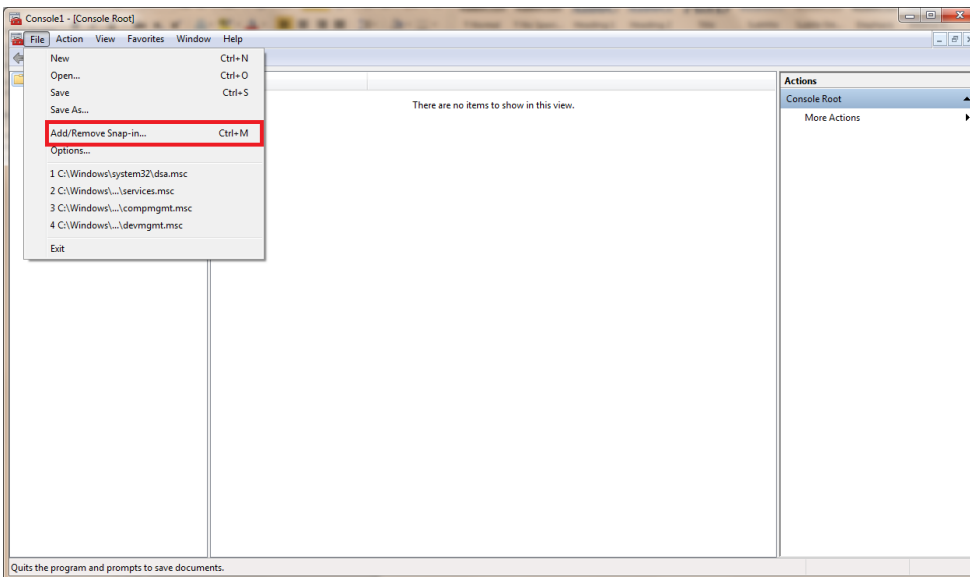
# Installing 6122 Printer on Windows 7 Machine

Step:

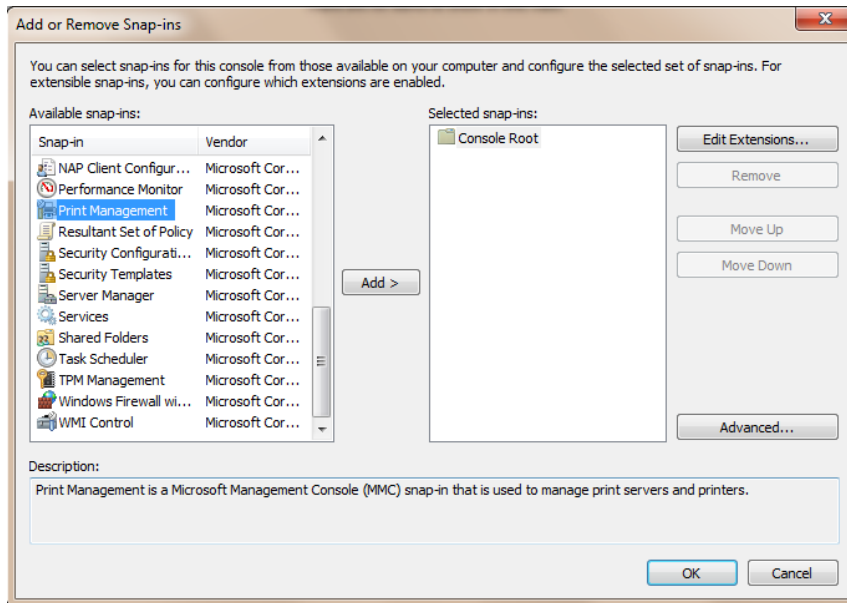
1. Click on the start menu and type mmc in the search area
2. It will open this



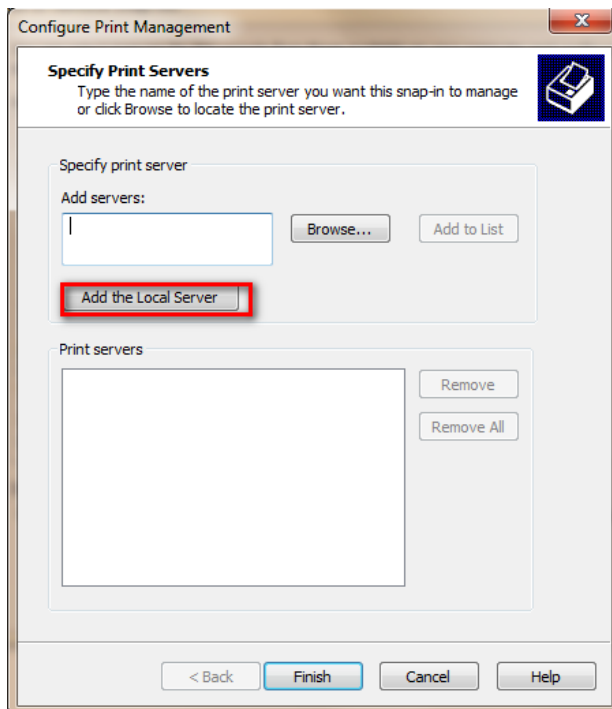
3. Click file and then add remove snap in.



4. Choose print management and then click add.

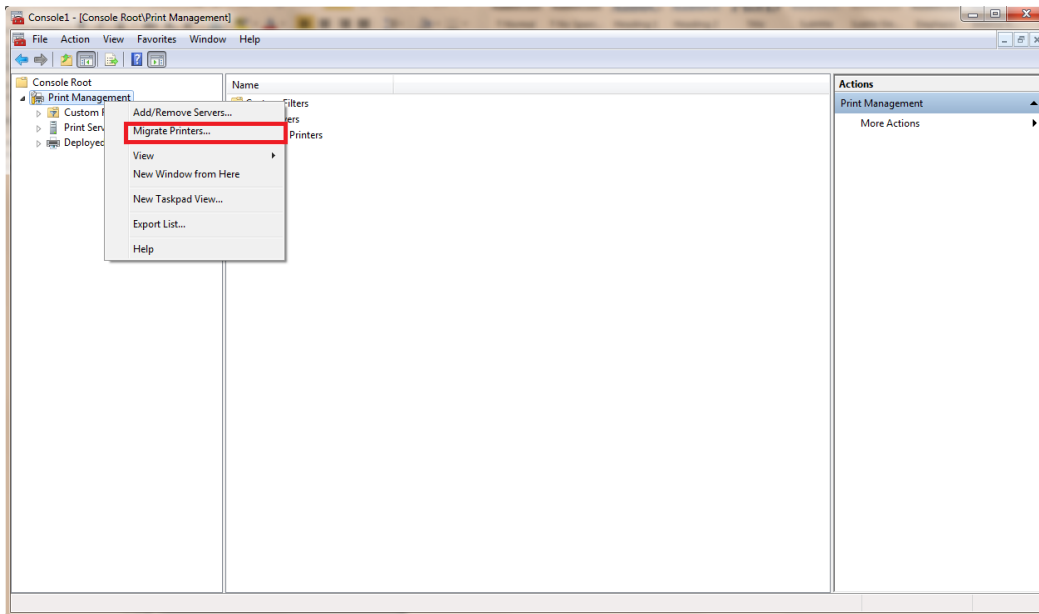


5. Click add the local server and then finish

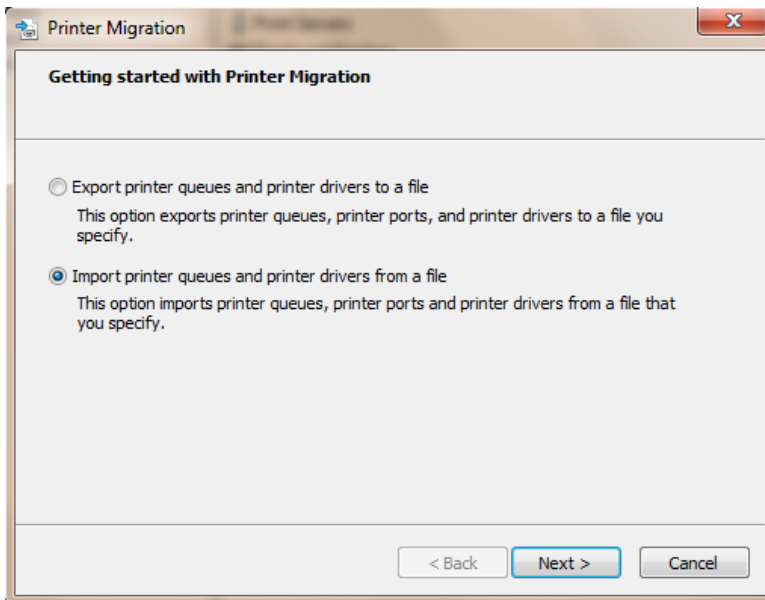


6. Hit ok and this will add the print server

## 7. Right click on the print management and then Migrate printers

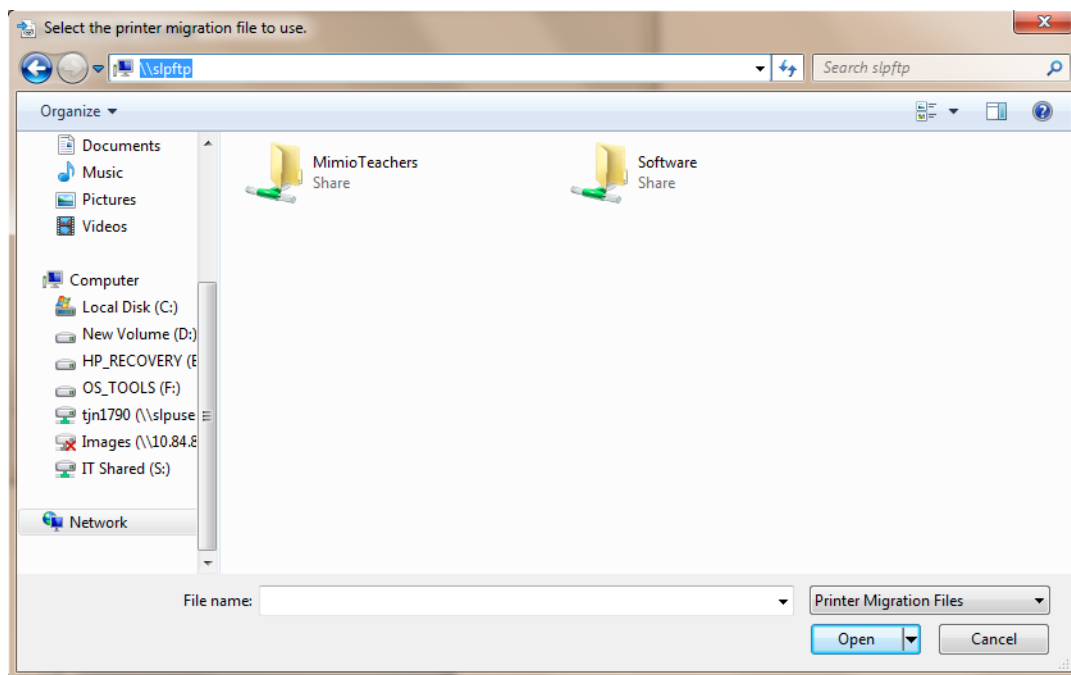


## 8. Choose import printers

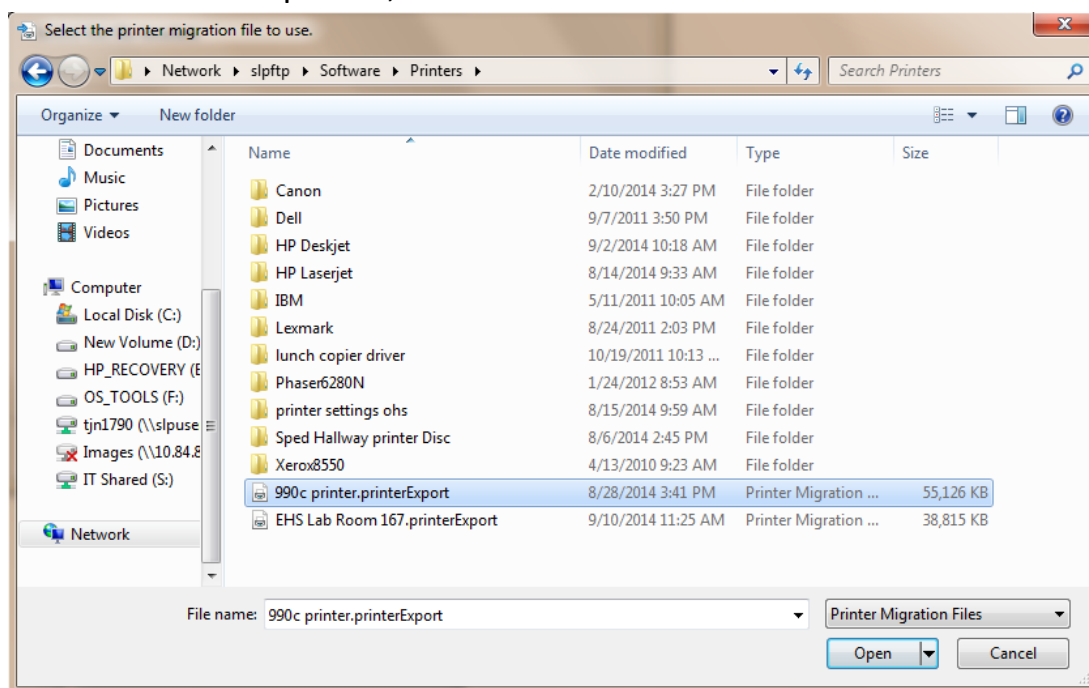


## 9. Click browse

10. At the top of the window change the location to [\\slpftp](#) to get the printer install file.



11. Go to software, printers then choose the 990c File for the 6122 Printer. This will load the 990c printer, but the drivers also work for the 6122



12. Click next for 3 or four windows.

13. Your done.

- If the printer will not work go right click on the printer in the printers folder for windows.
- Choose printer properties
- Choose ports at the top.
- Make sure its on a usb port any usb will do.