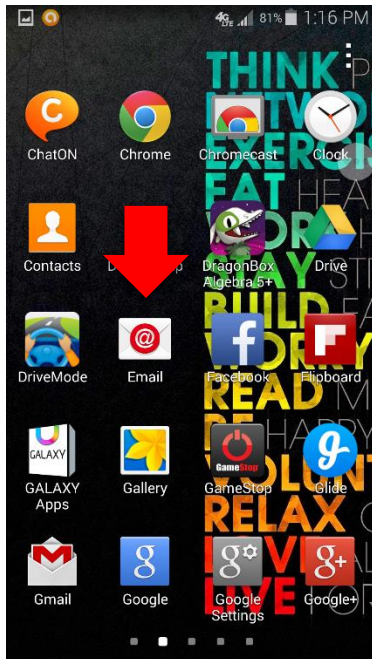


HOW TO SET UP MOBILE EMAIL ON ANDROID

1. CLICK ON MAIL LINK



2. TYPE IN YOUR EMAIL AND PASSWORD YOUR PASSWORD MAY HAVE BEEN CHANGED TO **SLPSB** SO IF YOUR PASSWORD DOESN'T WORK TRY THIS. **IF YOU DON'T SEE THIS SEE NEXT PAGE**

< Email accounts

Configure Email for most accounts in a few steps.

Email address

Password

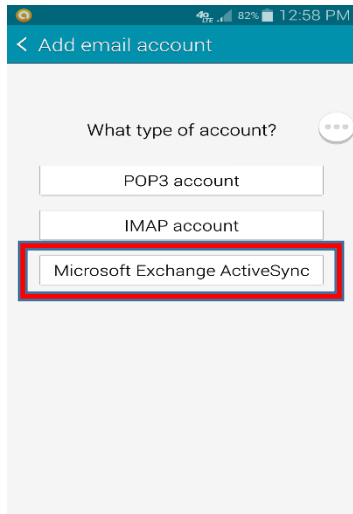
☐ Show password

☐ Set this account as the default for sending emails.

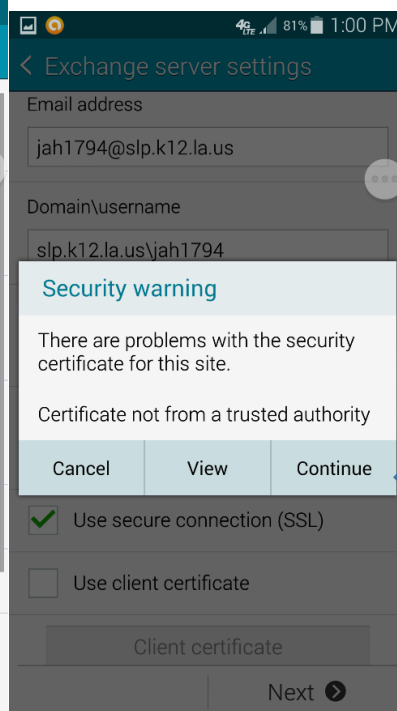
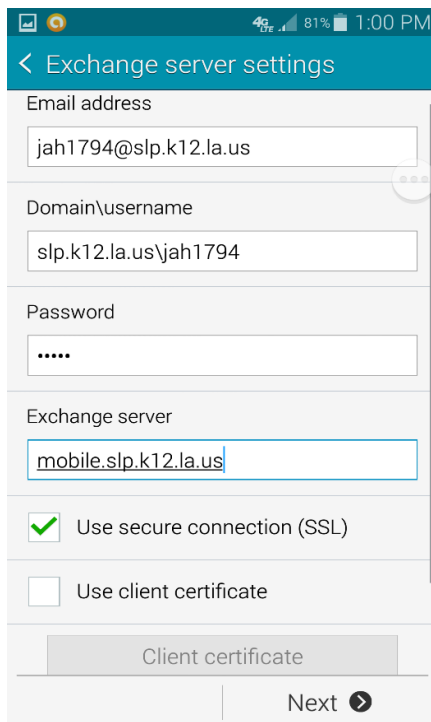
Manual setup | Next >

---IF YOU HAVE AND EMAIL ALREADY SET UP GO TO
MANAGE ACCOUNTS UNDER THE DROP DOWN IN THE
TOP LEFT CORNER. AND HIT THE PLUS SIGN TO ADD A
NEW ACCOUNT.

3. SELECT MICROSOFT EXCHANGE ACTIVE SYNC.



4. YOUR SETTINGS SHOULD LOOK LIKE THIS PICTURE EXCEPT
TAKE OUT MY EMAIL **JAH1794** AND SHOULD BE **REPLACED BY
YOUR EMAIL**. ONCE YOU CLICK NEXT YOU SHOULD CLICK
ACCEPT AND CONTINUE ON BOTH POP UPS.



5. AFTER THAT IT WILL ASK YOU HOW OFTEN YOU WOULD LIKE TO UPDATE FEEL FREE TO CHANGE THIS OR JUST CLICK NEXT.

AT&T 4G LTE 81% 1:01 PM

< Account options

Period to sync Email

3 days

Sync schedule

Push

Peak schedule

Push

Emails retrieval size

50 KB

Period to sync Calendar

2 weeks

☒ Notify me when email arrives

Next ➔