

El Dorado County Internet Connectivity For Students

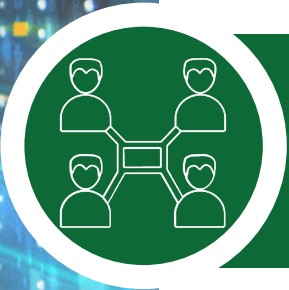


EDCOE
EL DORADO COUNTY
OFFICE OF EDUCATION

The challenges surrounding the COVID-19 pandemic reshaped how teachers deliver instruction to students. Teachers connect with students and deliver lessons electronically, which can be challenging for households that do not have consistent access to the internet. This document provides you with a variety of options to facilitate connectivity.



**El Dorado County Student
WiFi Network**



Connectivity Options



**EDCOE WOW! Vans
(Wireless On Wheels)**



El Dorado County Student WiFi Network

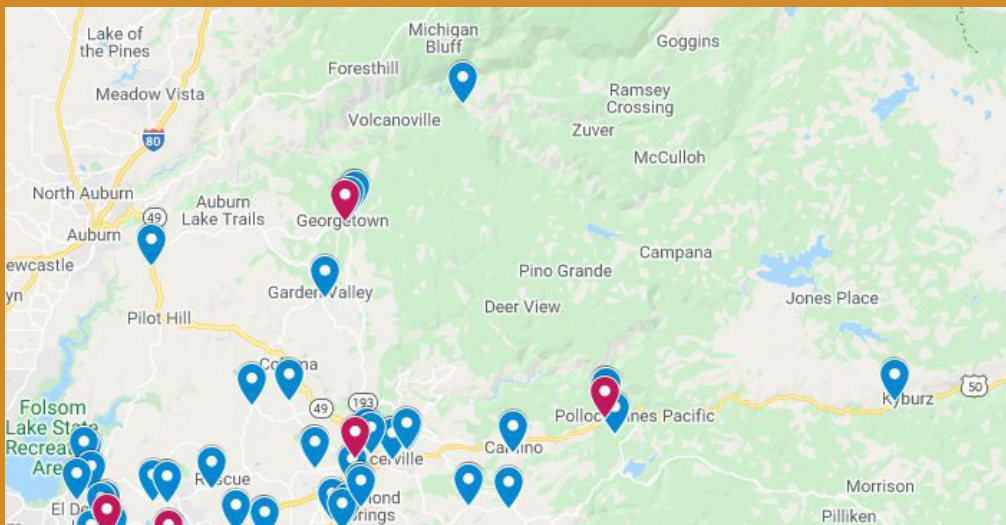
WiFi Network: EDC-STUDENT

- Contact your local school district for the WiFi password
- Available from 8am to 9pm*
- Broadcasting at over 70 locations in the county

This WiFi network is currently being broadcasted at schools and libraries throughout El Dorado County. Our goal is to provide students with internet access to assist with distance learning during school closures by providing a standard wireless network that can be easily accessed. Click on the link below or scan the QR code to find specific areas where this WiFi network is broadcasted: [EDC WiFi Network Map](#)

PLEASE NOTE: School and Library buildings may be CLOSED and access to public restrooms may be limited. Please continue to practice social distancing. At most locations, connectivity can be obtained from the parking lot and options are being reviewed to extend wireless signal in areas that do not have parking lot coverage. This WiFi network is provided “as is” and technical support is not included.

*Access hours at each location may vary. Mountain Creek School is available until 4:00pm.



SCAN ME



Connectivity Options

Internet Connectivity Options for Students and Families

- [Internet for All Now Educators' Toolkit](http://internetforallnow.org) (internetforallnow.org)
- [Find Low-Cost Internet Service and Computers in Your Area](#) (CETF EveryoneOn)
- [CDE: Getting Internet Access: Available Plans](#)
- [Comcast Internet Essentials](#) : for \$9.99 / mo. - Internet Essentials will increase speeds from 15/2 Mbps to 25/3 for all customers in response to emergency measures associated with Coronavirus (COVID-19). This speed increase will happen automatically - no action is required by customers. Customers also receive 2 months for free.
- [Xfinity WiFi Free For Everyone](#) : Xfinity WiFi hotspots across the country will be available to anyone who needs them for free – including non-Xfinity Internet subscribers. Once at a hotspot, consumers should select the “xfinitywifi” network name in the list of available hotspots and then launch a browser. For a map of Xfinity WiFi hotspots, visit www.xfinity.com/wifi
- [Unlimited Data with AT&T Home Internet](#): All AT&T consumer home internet wireline customers, as well as Fixed Wireless Internet, can use unlimited internet data.
- [Access from AT&T program](#): AT&T will continue to offer internet access for qualifying limited income households at \$10 per month through our Access from AT&T program. We've expanded eligibility to “Access from AT&T” to households participating in the National School Lunch Program and Head Start. Additionally, we're offering new Access from AT&T customers two months of free service.
- [Cal.Net Wireless ISP](#): Cal.Net provides wireless internet to homes in our county in areas that have line of sight to any of their towers. If needed, they will work with you to install antennas on trees or poles to improve connectivity. Half-off installation fees for the month of April. Giving a reduced rate for education use on the monthly service fees for basic needs.
- [Ruralnet Wireless ISP](#): RuralNet is based out of Pilot Hill and provides Internet access to areas around Garden Valley, Greenwood, Coloma, Rescue, Cool, Pilot Hill, Lotus, and some areas in Georgetown.
- [Remotely Located Wireless ISP](#): Provides Internet access in areas of Omo Ranch, Somerset, and Grizzly flat.
- [Rocky Ridge Wireless](#): Based out of Diamond Springs. Provides Internet access in areas of South Placerville, Diamond Springs & El Dorado, Oak Hill to South Pleasant Valley, Somerset & Fairplay, Mount Aukum & Omo Ranch, Cedar Creek & Bridgeport.
- [Hughesnet - Satellite Internet](#) : Satellite Internet is an option if you don't have access to any other ISPs at your home. However, due to the technology, it's not recommended for voice internet calls or video conferencing.



EDCOE WOW! Vans (Wireless On Wheels)

-))) *Several EDCOE vans are outfitted with Cradlepoint devices connected to Verizon powered by mobile solar panels and batteries.*
-))) *Vans are driven to certain communities that lack internet access to provide WiFi internet connectivity to students within 300ft of the van.*
-))) *Vans are not available in every school district. If available, school districts will send information regarding locations and schedules.*

